

Relevant Information for Council

FILE: X030693.001 **DATE:** 18 March 2022

TO: Lord Mayor and Councillors

FROM: Amit Chanan, Director City Projects and Property

THROUGH: Monica Barone, Chief Executive Officer

SUBJECT: Information Relevant To Item 6.3 – Post Exhibition – Crown Land Plans of Management

Alternative Recommendation

It is resolved that:

- (A) Council note the outcomes of the public exhibition period as shown at Attachment S to the subject report;
- (B) Council note the change in title of the Observatory Hill Plan of Management to Observatory Park Plan of Management;
- (C) Council note that the Hyde Park Plan of Management is subject to a future Council report;
- (D) ***authority be delegated to the Chief Executive Officer to amend the Crown Land Plans of Management to:***
 - (i) ***include an Executive Summary that reflects how these documents respond to the City of Sydney's commitment to sustainability, climate action, equity, access and caring for Country; and***
 - (ii) ***revise the Appendices to reference all influencing policies, strategies and standards for clarity; and***
- (E) ***Council adopt the final Crown Lands Plan of Management as shown at Attachments B to Q to the subject report, subject to the completion of the amendments identified in (D) above.***

Additions shown in ***bold italics***.

Background

At the meeting of the Corporate, Finance, Properties and Tenders Committee on 14 March 2022, further information was sought on the following:

Paddington Reservoir Gardens Plan of Management

Within the City of Sydney, several site specific and generic plans of management have been adopted for community land and include sites such as Sydney Park and the Paddington Reservoir Gardens.

These plans are reviewed periodically and where proposed for amendment, will encompass mandatory community engagement to inform the revision and finalisation of the plans prior to Council adoption.

A review and update of the Paddington Reservoir Gardens Plan of Management is planned to commence mid-late 2023 and will involve community engagement.

Broader Policy Context around Crown Land Plans of Management

The City of Sydney has adopted several strategies and policies underpinned by the outcomes of Sustainable Sydney 2030 that seek to ensure that Sydney is resilient, inclusive and regenerative. These outcomes inform all operational activities undertaken by the City.

Specific to achieving the climate action and sustainability outcomes, the following strategies and policies including targets and dates contained within them, apply to Crown Lands Plans of Management:

(a) Adapting for Climate Change 2015-2070

This strategy sets out the impacts the changing climate will have on our city, the risks these pose and the adaptive actions the City, businesses and communities must undertake now and in the future. Key operational measures include maintaining and developing new policies and programs that impact on the City's adaptive capacity, plan and implement actions to future-proof high-risk spaces, and design and assess the performance of new and existing buildings, facilities, infrastructure, streets and open space to ensure they are capable of coping with a changed climate.

(b) Environmental Strategy 2021-2025

This strategy outlines measures to help make Sydney a sustainable and resilient city. Key operational measures include phasing out natural gas from our operations, using alternative water sources to keep our parks green and continuing to work on initiatives that mitigate the urban heat island effect, improve air quality and contribute to a water-sensitive city that protects biodiversity, green spaces and waterways.

(c) Greening Sydney Strategy

This strategy outlines measures to help create a greener Sydney that enables the community equitable access to quality green spaces. Key operational measures include developing policies, programs and projects that distribute quality greening equally, create cool and calm spaces to improve our community's health and wellbeing, reduce urban heat impacts, and bring nature into the city.

(d) Environmental Sustainability Policy

In the City's objective to transition to a zero-carbon and regenerative economy, this policy sets out the framework to ensure that actions undertaken integrate climate emergency assessment into decision making to build resilience into its functions, activities and asset management.

Specific to achieving equity and access outcomes the following strategies and policies have been established:

(a) Inclusion (Disability) Action Plan 2021-2025

This plan aligns the City's long-term vision of an inclusive City of Sydney and meets the legislative requirements from the Disability Inclusion Act 2014. This plan includes a series of actions designed to actively address barriers faced by people with disability.

(b) Inclusive and Accessible Public Domain Policy

This policy provides a framework on how the City will consistently approach accessibility and inclusion in the design and management of public domain spaces and its infrastructure to allow for equitable use for all users, including how to identify and respond to applicable standard and best practice approaches.

A culmination of the objectives set within these policies and strategies have been woven together to establish high-level management targets within Section 9 of the Crown Land Plans of Management and are also referenced within the Appendices.

Areas of specific focus are 2.0 Access, Connections and Accessibility, 3.0 Community Use and Activation, and 5.0 Environment and Sustainability. All operational activities that arise from the management and care of the associated land adhere and align to these policies and strategies.

To ensure that the Crown Land Plans of Management adequately reflect adopted strategic outcomes, the following Executive Summary will be incorporated into each plan to reflect how they respond to the City of Sydney's commitment to sustainability, climate action, equity, access and caring for Country.

The City of Sydney recognises the importance of public open space and the need to ensure that it is managed in a way that is inclusive, regenerative and resilient.

The City will ensure that these spaces are appropriately managed for future generations.

The Crown Land Plans of Management have been prepared in accordance with the City's objectives identified within the Strategic Community Plan. This includes the City's commitment to sustainability, climate action, equity, access and caring for Country.

The City will do this by implementing management targets and strategies that seek to care for Country and reflect its importance to Aboriginal and Torres Strait Islander peoples, and to create sustainable spaces that are accessible for all.

Status of Aboriginal Land Claims within the City of Sydney

Attachment A identifies the ten undetermined Aboriginal Land Claims lodged within the City of Sydney Local Government Area. These Claims are clustered in the following locations:

- (a) Johnstons Creek Parklands - managed by the City
- (b) Beare Park - managed by the City
- (c) Rushcutters Bay Park - shared in management with Woollahra Municipal Council
- (d) Moore Park - managed directly by the Moore Park Trust

The process to determine Aboriginal Land Claims is administered by Crown Lands directly. To assist in their determination, Crown Lands may request supporting evidence from Crown land managers. To date, the City of Sydney has complied with all requests received from Crown Lands in relation to these undetermined Claims.

Crown Lands has identified that the prompt, equitable and efficient resolution of Aboriginal Land Claims on Crown land will be a key outcome of the State Strategic Plan for Crown Land.

Memo from Amit Chanan, Director City Projects and Property

Prepared by: Cailin Martin, Crown Lands Manager

Attachments

Attachment A. Aboriginal Land Claims - Sydney Local Government Area

Approved



MONICA BARONE

Chief Executive Officer

Attachment A

**Aboriginal Land Claims –
Sydney Local Government Area**

Aboriginal Land Claims Lodged in City of Sydney LGA

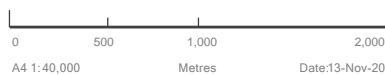
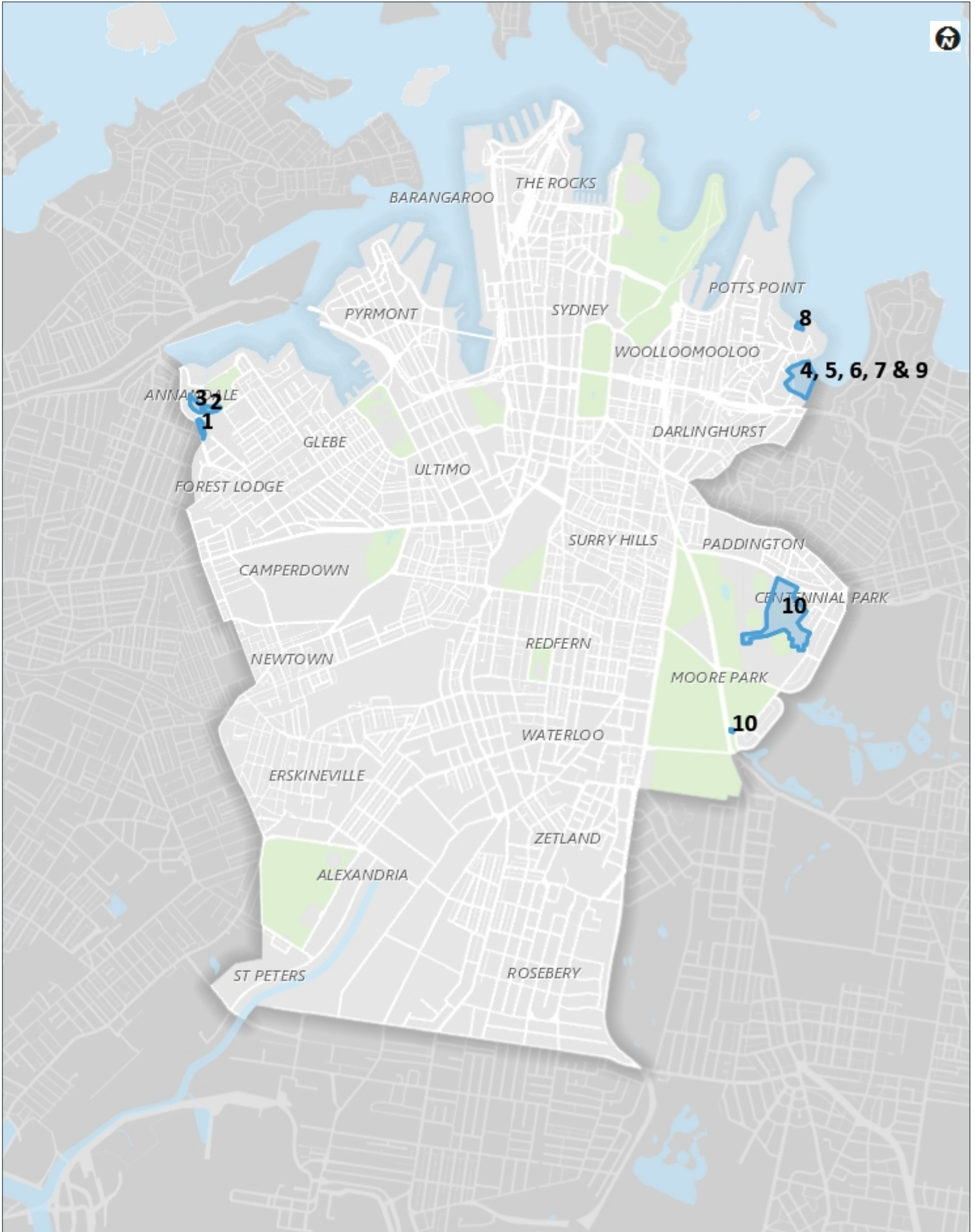
Incomplete = Has not been investigated

Claim No	Land Council	Land Claimed	Address	Lodged	Latest Action	Suburb	Map Code (Unresolved Claims)	City of Sydney Status (Current)
22410	Metropolitan	Lot 716 DP 47216	Federal Park 2 - 363 Nelson St, Annandale	18/11/2009	INCOMPLETE	ANNANDALE	1	Crown Land Manager
23103	Metropolitan	Lot 387 DP 752049	Jubilee Park - 12 Maxwell Rd, Glebe	3/12/2009	INCOMPLETE	GLEBE	2	Crown Land Manager
23336	Metropolitan	Lot 671 DP 729294	Federal Park 1 - 8 Chapman Rd, Annandale	3/12/2009	INCOMPLETE	ANNANDALE	3	Crown Land Manager
29773	La Perouse	Lot 7321 DP 1165813	Rushcutters Bay Park - 6-14 Waratah St, Rushcutters Bay	3/09/2010	INCOMPLETE	DARLING POINT	4	Crown Land Manager
29774	La Perouse	Lot 7321 DP 1165813	Rushcutters Bay Park - 6-14 Waratah St, Rushcutters Bay	3/09/2010	INCOMPLETE	DARLING POINT	5	Crown Land Manager
29785	La Perouse	Lot 7321 DP 1165813	Rushcutters Bay Park - 6-14 Waratah St, Rushcutters Bay	3/09/2010	INCOMPLETE	DARLING POINT	6	Crown Land Manager
29786	La Perouse	Lot 7321 DP 1165813	Rushcutters Bay Park - 6-14 Waratah St, Rushcutters Bay	3/09/2010	INCOMPLETE	DARLING POINT	7	Crown Land Manager
42494	La Perouse	Lot 1 DP 136079	Beare Park - 13 Esplanade, Elizabeth Bay	19/12/2016	INCOMPLETE	ELIZABETH BAY	8	Crown Land Manager
42494	La Perouse	Lot 7321 DP 1165813	Rushcutters Bay Park - 6-14 Waratah St, Rushcutters Bay	19/12/2016	INCOMPLETE	DARLING POINT	9	Crown Land Manager
42494	La Perouse	Lot 1773 DP 821362, Lot 51 DP 1041134	Driver Avenue, Moore Park	19/12/2016	INCOMPLETE	MOORE PARK	10	Not Applicable

*The City of Sydney and City of Woollahra share responsibility in the management of Rushcutters Bay Park

Undetermined Aboriginal Land Claims

Sydney Local Government Area



© City of Sydney Council 2020. All Rights Reserved. This map has been compiled from various sources and the publisher and/or contributors accept no responsibility for any injury, loss or damage arising from the use, error, or omissions therein. While all care is taken to ensure a high degree of accuracy, users are invited to notify Council's Spatial Services of any map discrepancies. No part of this map may be reproduced without written permission.