

Attachment B

Project Scope – Town Hall Square

Town Hall Square

15

Project Scope - February 2026

Project Vision

16



A civic space (Sydney's civic heart)

Provide a significant public space for Sydney - the civic + public centre of the City

1. Wilhelmina Square, Netherlands
2. Sydney Town Hall, George Street.
3. St Marks Square, Venice.
4. Granary Square, Kings Cross

Project Vision

17



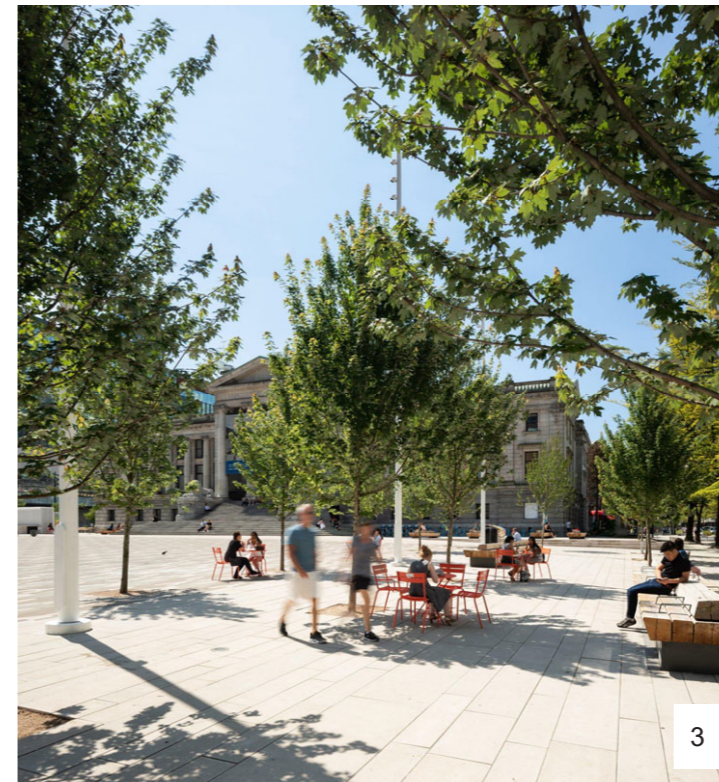
A space for everyday life and events

Comfortable spaces with lighting, seating, active edges and essential infrastructure to support everyday life, events, public gathering, protests + celebrations

1. Sydney Square – Chairs in squares
2. Vancouver Art Gallery
3. Granary Square, Kings Cross
4. Brighton New Road, Gehl Architects

Project Vision

18



Increasing City greening

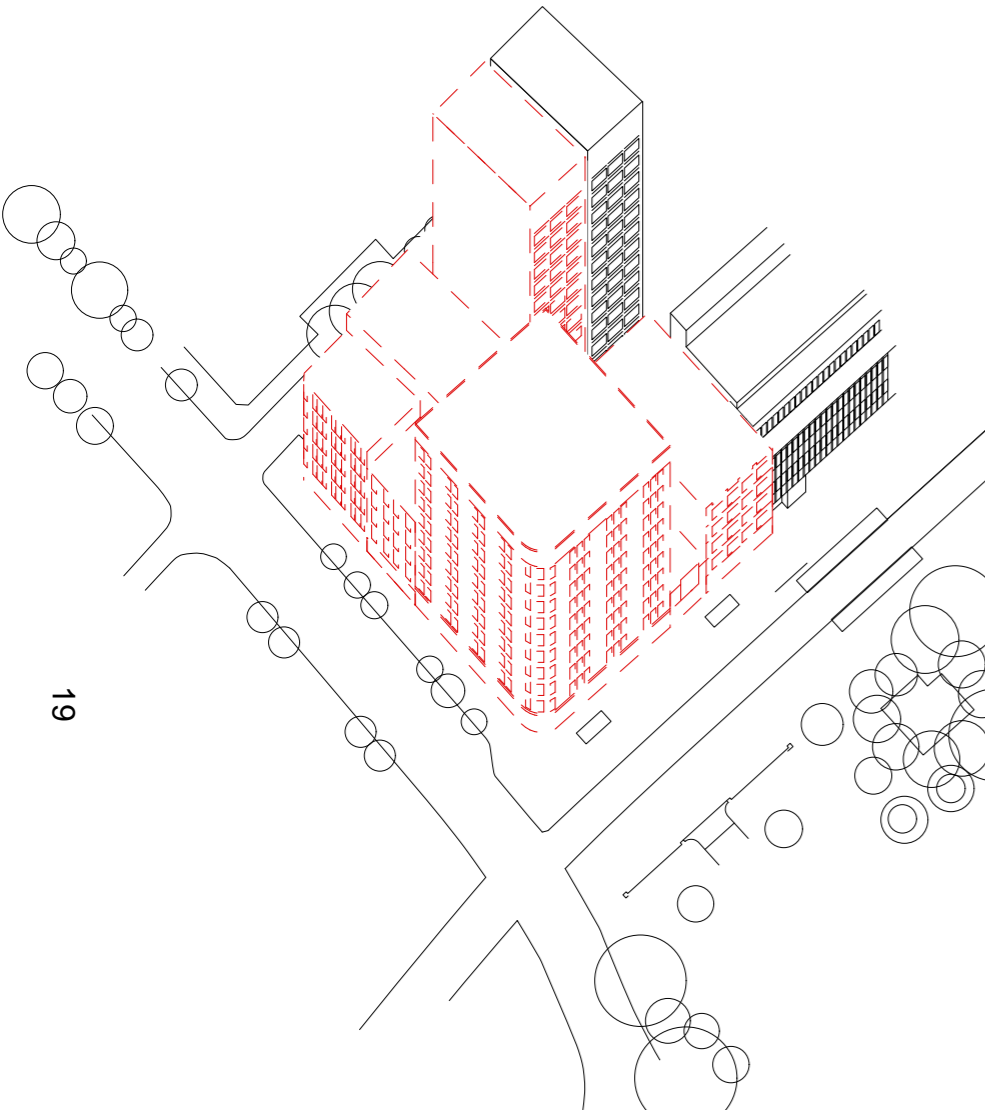
New significant trees (deep soil) to mitigate exposed sun conditions + contribute to canopy / greening targets

1. Sydney Town Hall
2. David H Koch Plaza, New York.
3. Vancouver Art Gallery Vancouver.
4. As above.

Project Scope

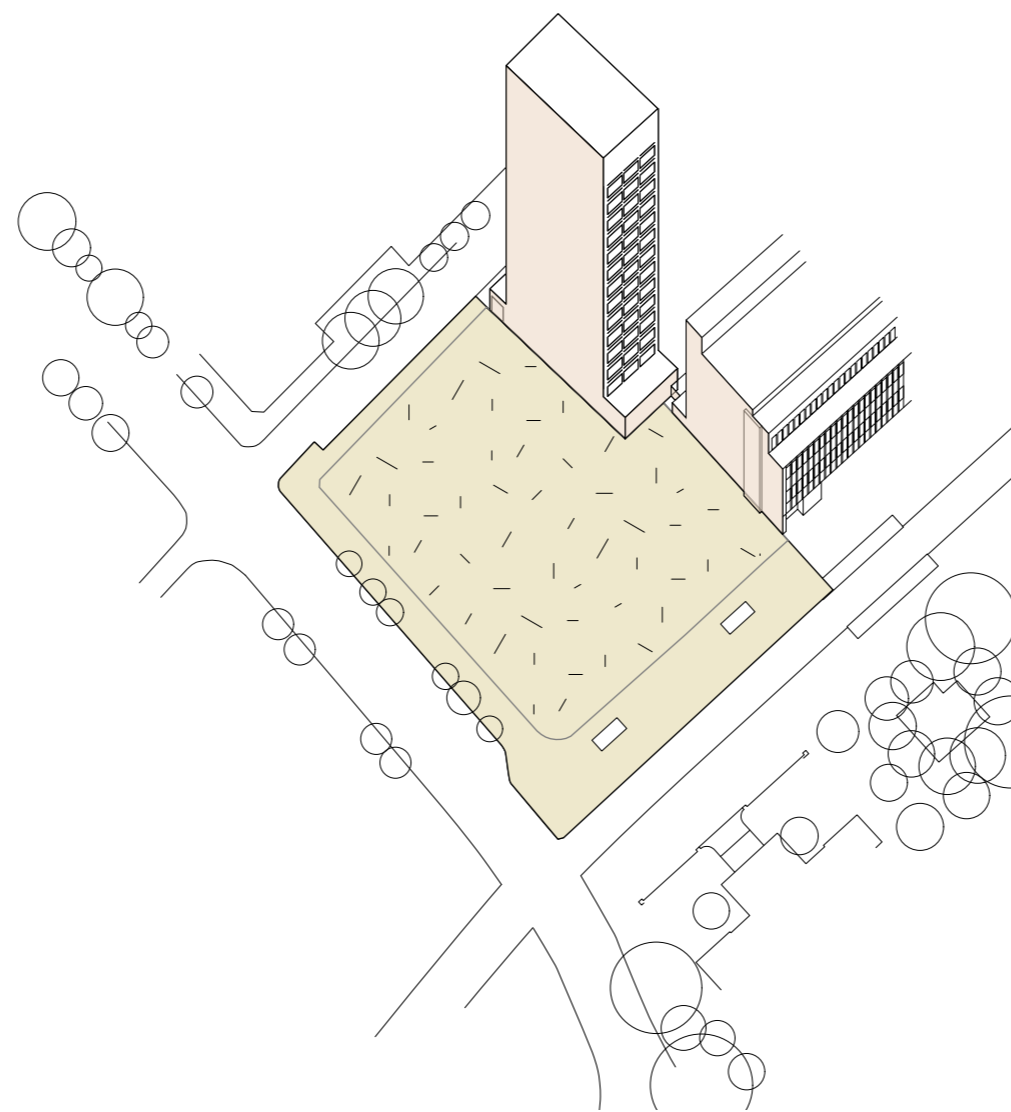
Outline of the scope of works for the project.

19



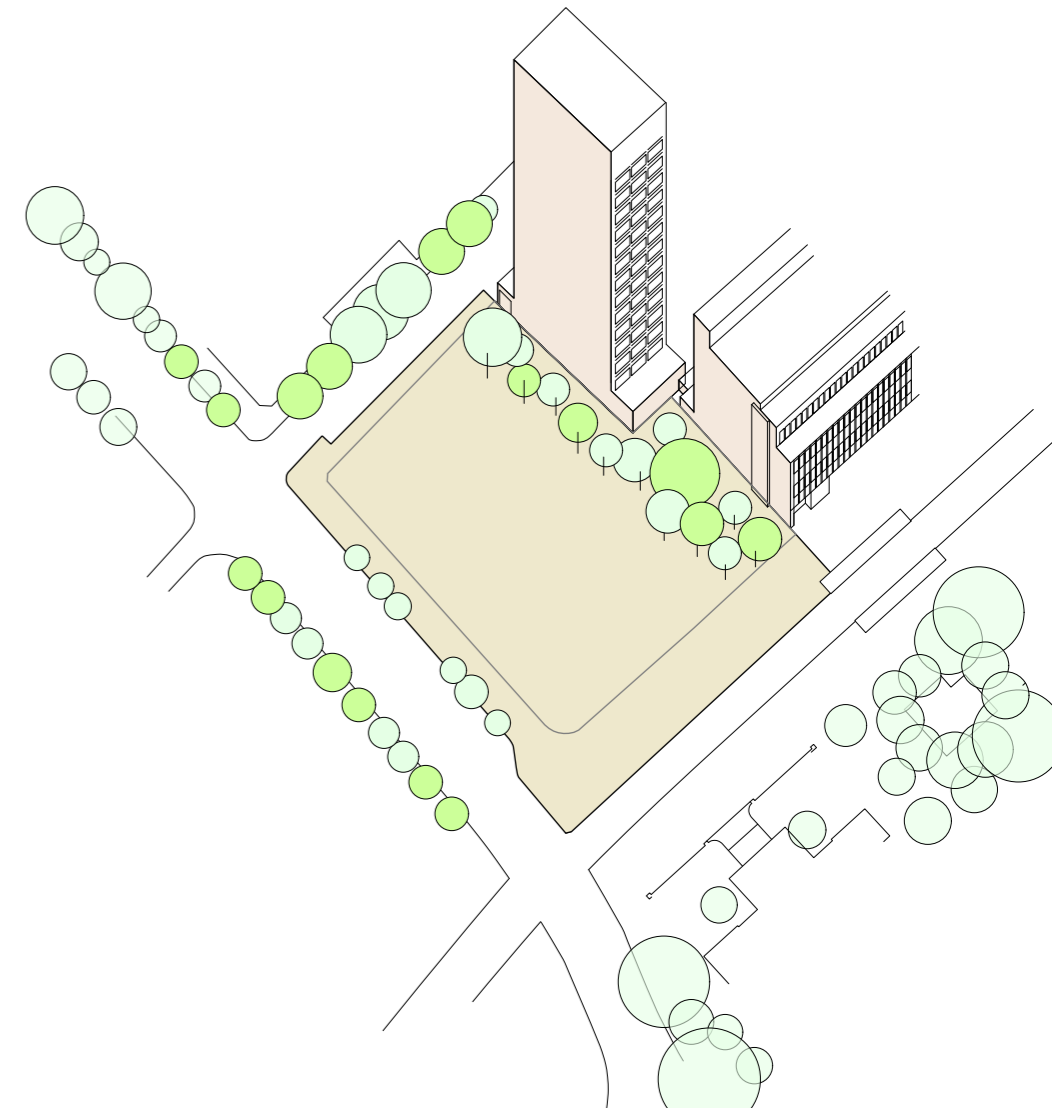
Demolition of the existing

- Demolition of all 7 buildings within the Site including the removal and/or remediation of their basements to return to at-grade
- Interface works to the Site's boundaries including utilities and adjacent properties



New public square

- New public square (Approx. 4,200m² GFA) with high quality paving
- Public domain furniture, lighting and associated infrastructure to accommodate everyday activities and large public gatherings / events
- Improvement works to the southern edge of the Site to ensure adequate activation and amenity for everyday use



City greening

- Retention of existing street trees (where possible)
- New trees in deep planting zones with sufficient soil volumes

Exclusions: Construction of any buildings, basements or public toilets. Underground pedestrian connection to the Sydney Metro, Town Hall Station and/or QVB.

Design Considerations

Outline of the design considerations for the project.

1. Celebrate Civic Scale and Heritage

Enhance and showcase the site's civic character and heritage buildings to reinforce identity and a strong sense of place.

2. Provide Flexible and Adaptable Public Space

Design public space that can support a wide range of uses and evolve over time in response to community needs.

3. Strengthen Tree Canopy for Shade and Amenity

Increase and maintain tree coverage to improve thermal comfort, environmental performance, and overall public amenity.

3. Use Enduring Materials, Surfaces, and Detailing

Select high-quality, robust, and timeless materials that ensure longevity and reduce whole-of-life maintenance costs.

5. Develop a Design Response to the Southern Edge

Address the physical conditions of the southern edge to ensure design quality, activation, and visual cohesion.

6. Integrate Seating and Public Furniture

Provide diverse, comfortable, and well-located seating and furniture that support daily use and social interaction.

7. Support Events and Programming

Enable informal and formal events through thoughtful spatial planning, integrated infrastructure, and flexible open areas.

9. Consider the Long-term Vision for Pitt St and Park St

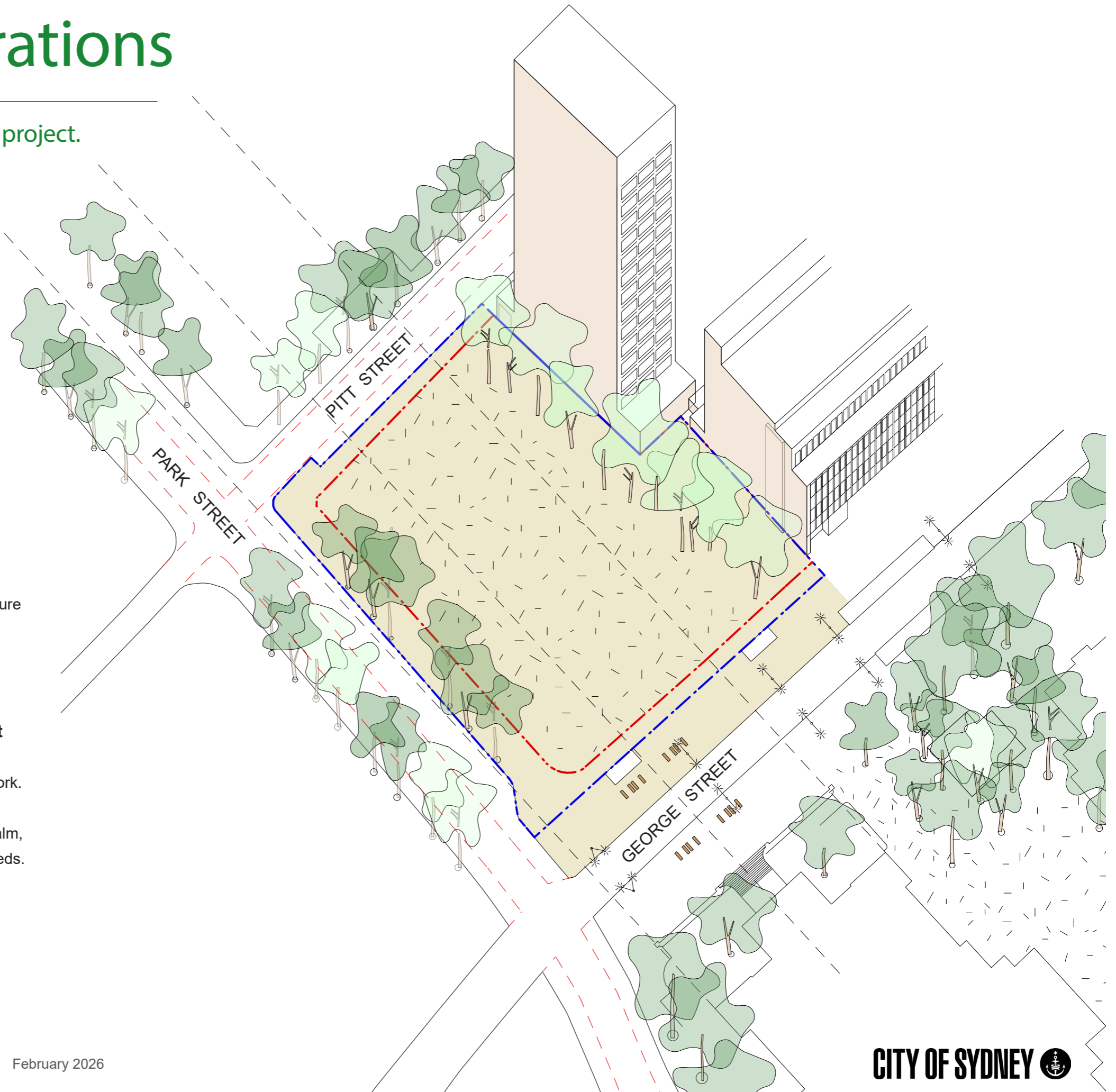
Align design decisions with future movement patterns, urban strategies, and the strategic role of Pitt and Park in the city network.

9. Consider the Long-term Vision for Station Entries

Consider how station entrances are integrated into the public realm, accommodating future capacity, accessibility, and wayfinding needs.

10. Resolve Interfaces with Adjoining Properties

Provide coherent, attractive, and functional edge conditions that manage transitions and shared boundaries.



• - - • SITE BOUNDARY

• - - • EXTENT OF THE WORKS