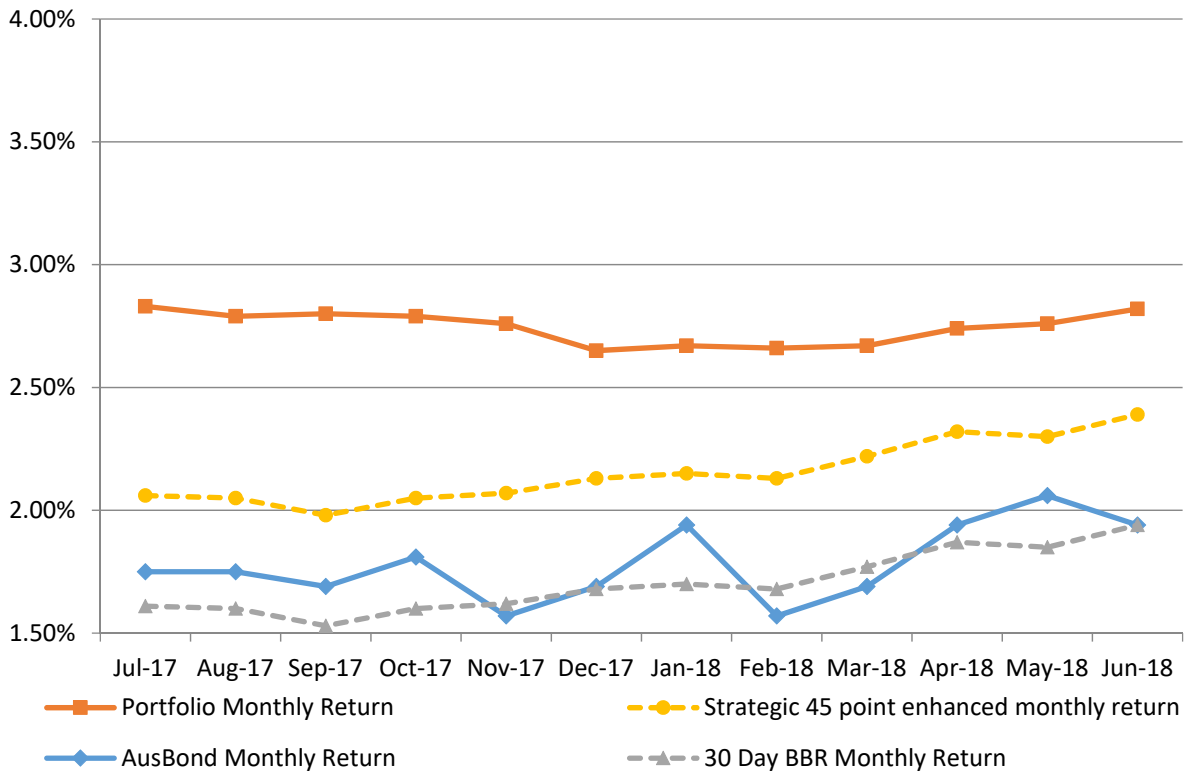


Attachment B

**Investment Performance
as at 30 June 2018**

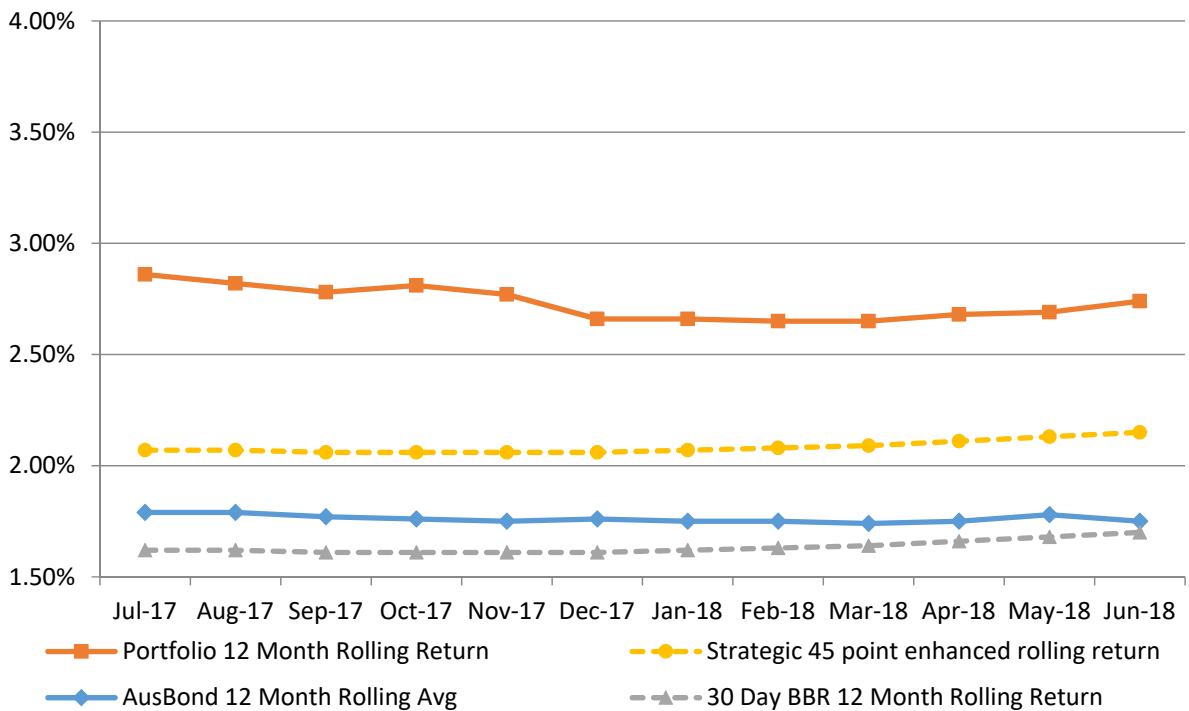
Monthly Results

**Actual Portfolio vs Strategic Enhanced Benchmark vs AusBond Benchmark vs 30 Day BBR Benchmark
June 2018**

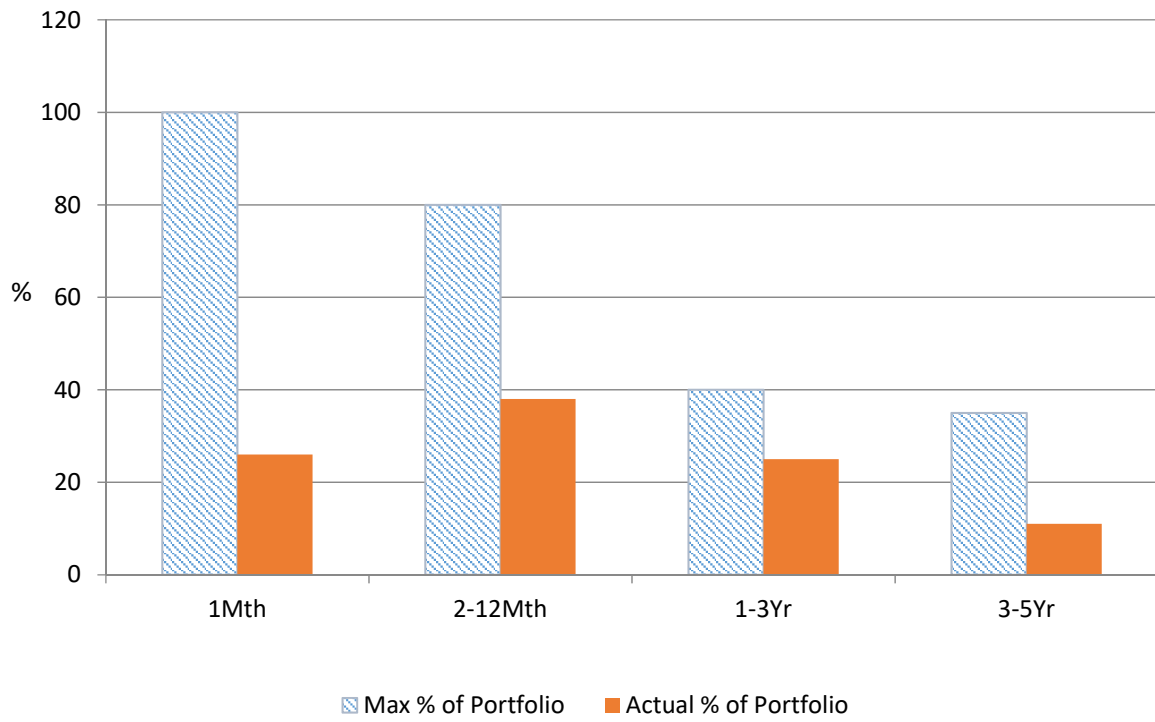


12 Month Rolling Averages

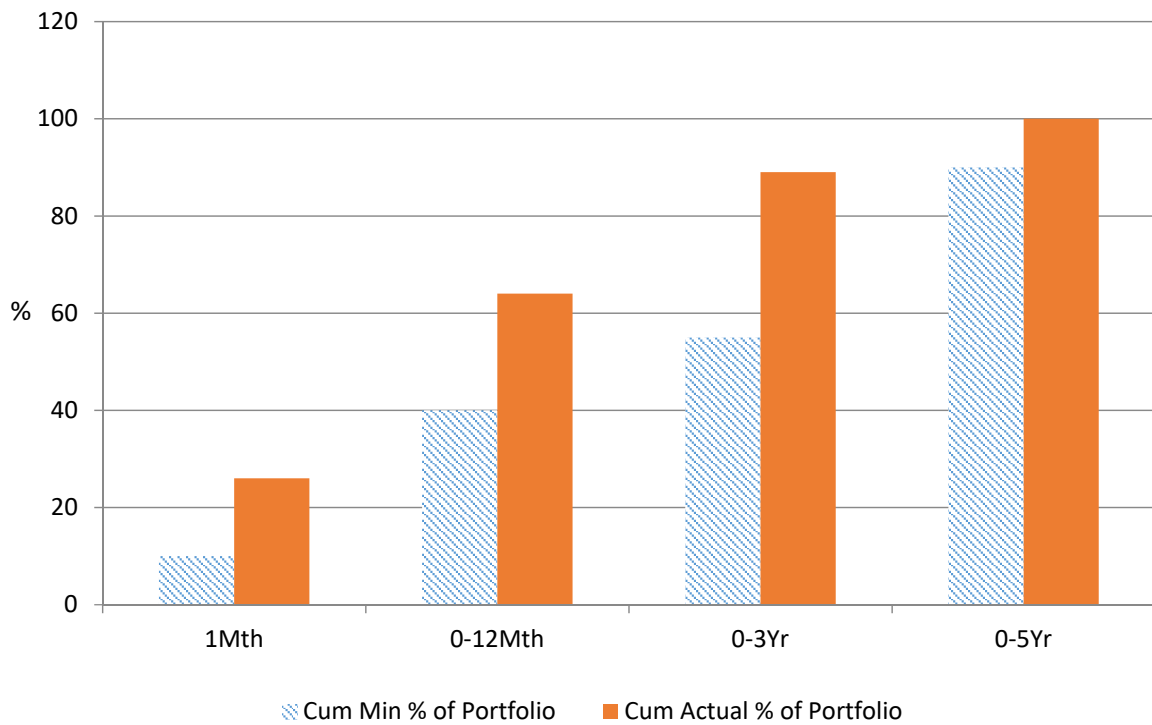
**Actual Portfolio vs Strategic Enhanced Benchmark vs AusBond Benchmark vs 30 Day BBR Benchmark
June 2018**



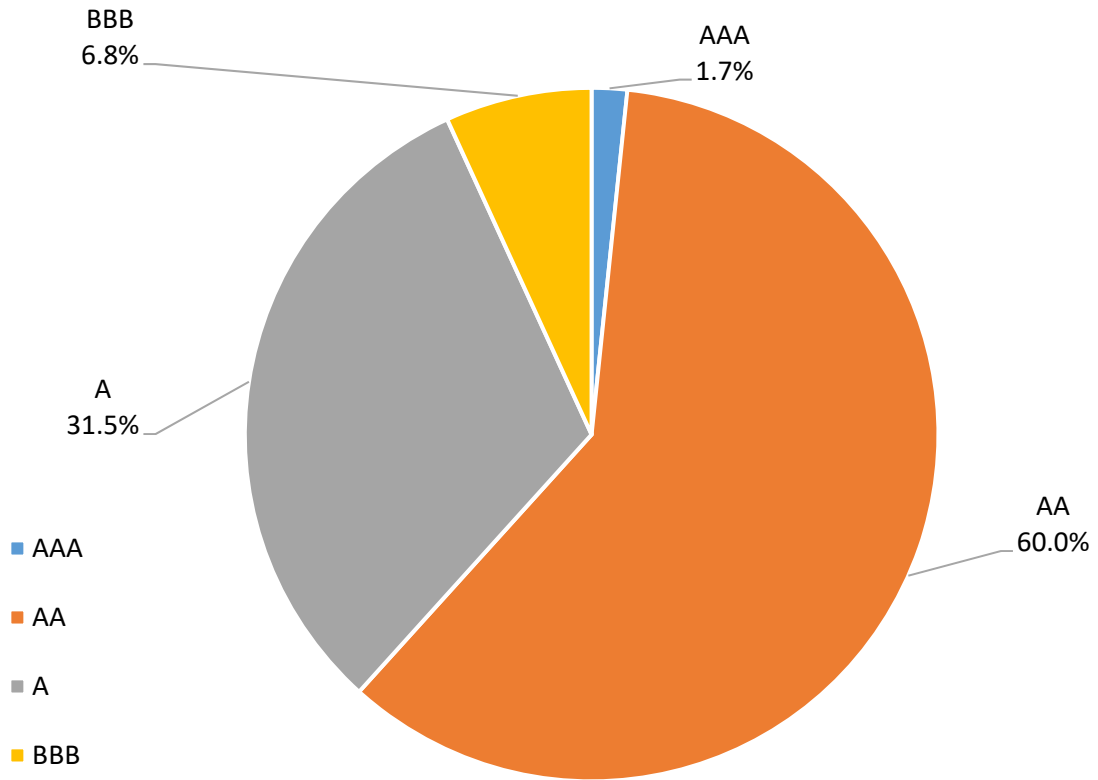
% Liquidity - Maximum Allowances as at 30 June 2018



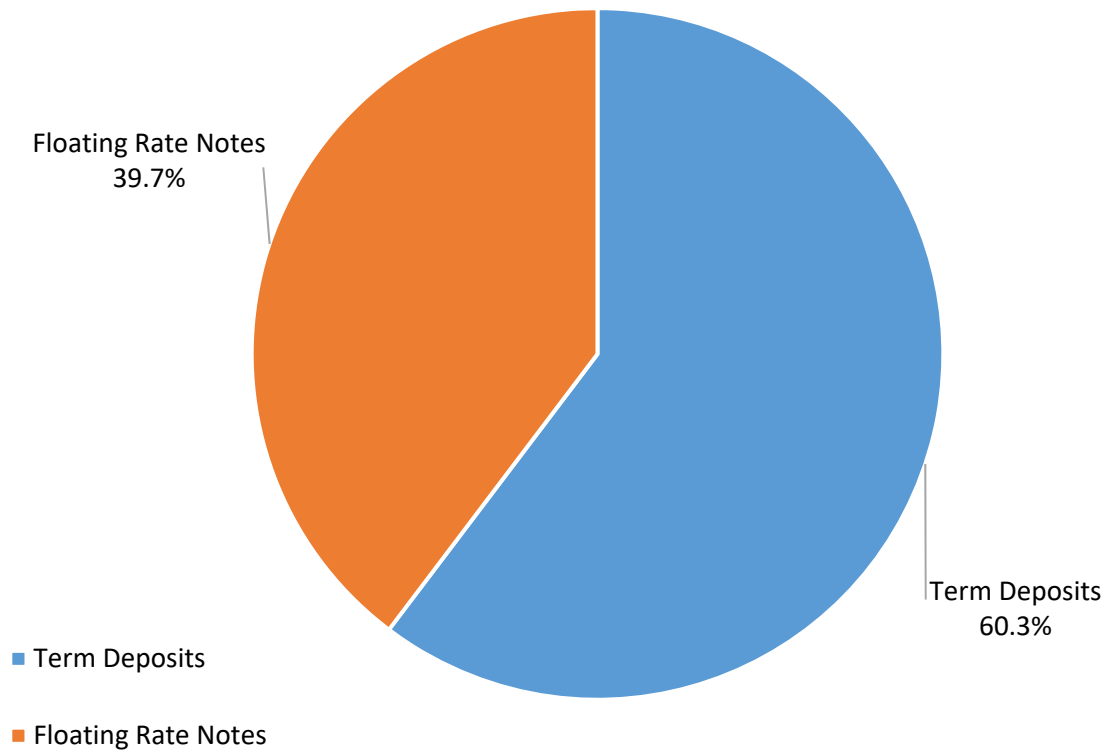
% Liquidity - Minimum Allocations as at 30 June 2018



Risk Profile as at 30 June 2018



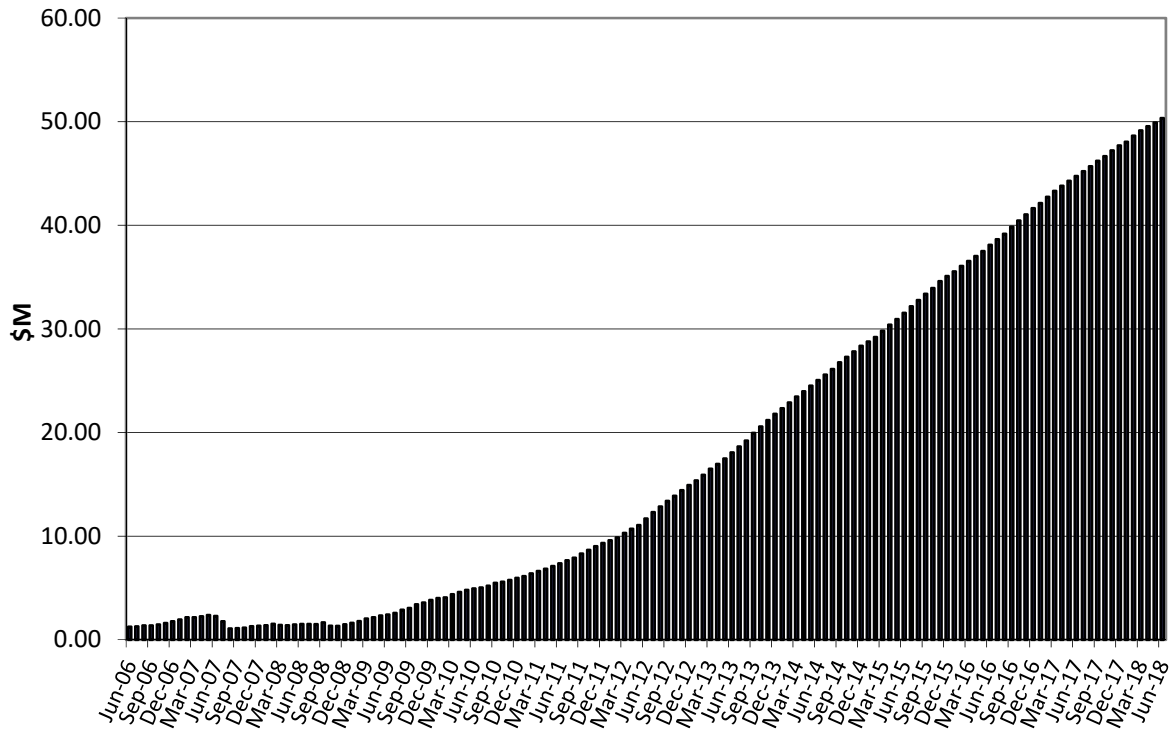
Investment Product Profile as at 30 June 2018



**Investment and cash distribution by financial institution as at
30 June 2018**

| Institution Category | Financial Institution | Amount \$M | Financial Inst. % | Institution Cat. % |
|---|---|---------------|-------------------------|--------------------------|
| Australian Big 4 Bank (and related institutions) | ANZ Bank | 35.0 | 6.0 | |
| | Commonwealth Bank-related: | 123.6 | 21.1 | |
| | <i>Bankwest</i> | <i>55.0</i> | <i>9.4</i> | |
| | <i>Commonwealth Bank</i> | <i>68.6</i> | <i>11.7</i> | |
| | National Australia Bank | 70.0 | 12.0 | |
| | Westpac Banking Corporation | 134.9 | 23.0 | |
| Big 4 Total | | 363.5 | | 62.1 |
| Other Australian ADIs and Australian subsidiaries of foreign institutions | AMP Bank Ltd | 5.0 | 0.9 | |
| | Bank Of Queensland | 44.0 | 7.5 | |
| | Bendigo and Adelaide Bank | 21.0 | 3.6 | |
| | CUA Limited | 40.0 | 6.8 | |
| | Greater Bank | 5.0 | 0.9 | |
| | Heritage Bank | 3.5 | 0.6 | |
| | IMB | 15.0 | 2.6 | |
| | Members Equity Bank | 44.8 | 7.6 | |
| | Newcastle Permanent Building Society | 17.0 | 2.9 | |
| | Royal Bank of Canada - Sydney | 9.5 | 1.6 | |
| | Suncorp Bank | 17.5 | 3.0 | |
| Other ADI Total | | 222.3 | | 37.9 |
| Grand Total | | 585.8 | 100.0 | 100.0 |

**Cumulative Outperformance over AusBond Benchmark
2006-2018**



**Cumulative Outperformance over 30 Day BBR Benchmark
2006-2018**

