

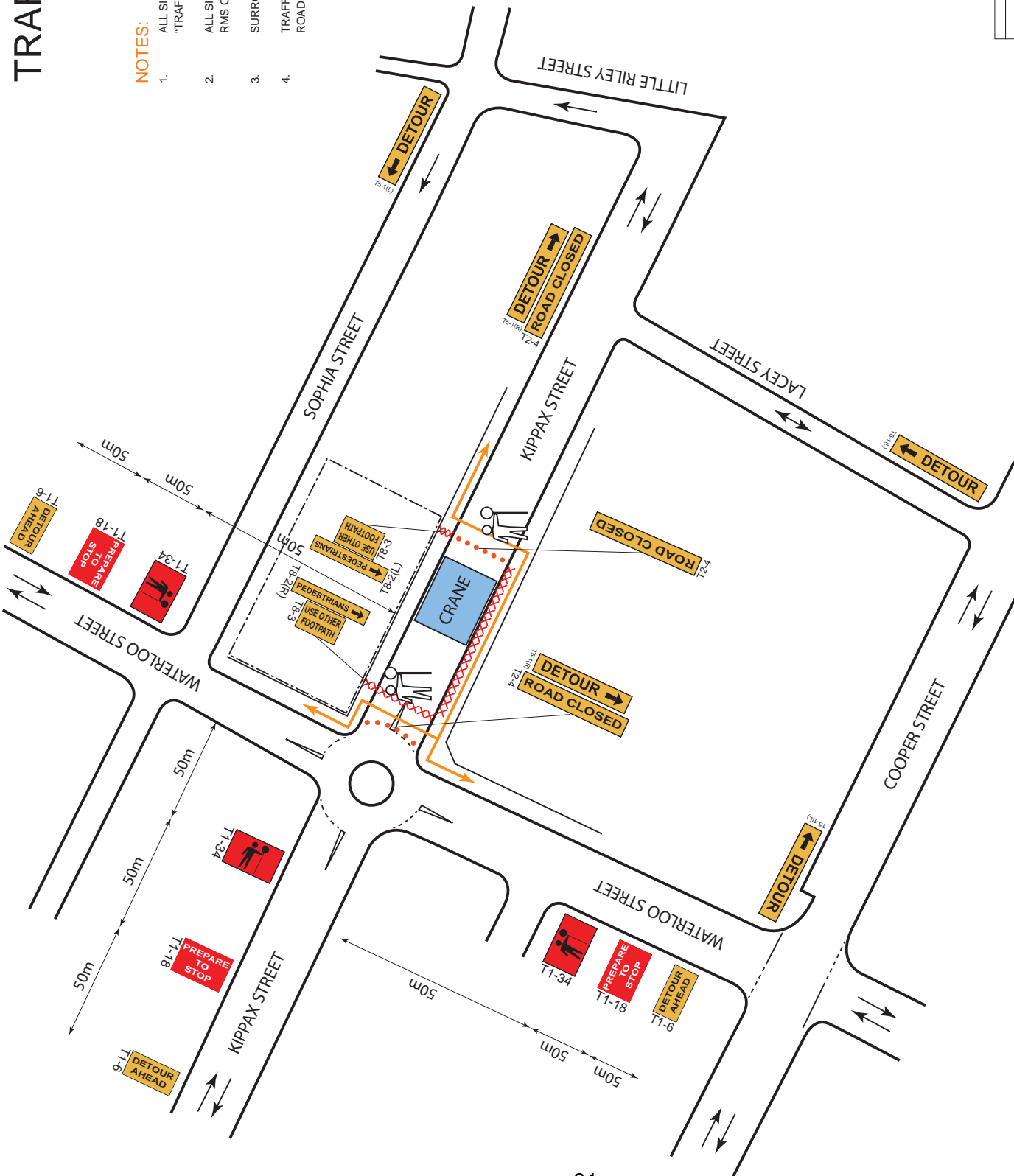
TRAFFIC CONTROL PLAN ROAD CLOSURE

NOTES:

1. ALL SIGNAGE TO BE INSTALLED IN ACCORDANCE WITH RMS "TRAFFIC CONTROL AT WORKSITES" MANUAL AND AS1742.3.
2. ALL SIGNAGE AND DELINEATION MUST BE INSTALLED BY RMS CERTIFIED TRAFFIC CONTROLLER(S) ONLY.
3. SURROUNDING PROPERTY ACCESS TO BE MAINTAINED AT ALL TIMES.
4. TRAFFIC CONTROLLERS TO MANAGE PEDESTRIAN ACCESS AROUND THE ROAD CLOSURE.

LEGEND:

- - - - - SITE BOUNDARY
- [Blue Box] CRANE STANDING AREA
- [Red Dots] DELINEATION (i.e. TRAFFIC CONES)
- [Red X's] PEDESTRIAN BARRIER
- [Orange Line] PEDESTRIAN ROUTE
- [Stick Figure] TRAFFIC CONTROLLER



RECOMMENDED MAXIMUM SPACINGS OF CONES AND BOLLARDS	Approach		Max Spacing (m)
	Speed (km/h)	Spacing (m)	
All purposes on residential or commercial streets	<=50	4	4
Center line on approach to Traffic Controller position	All Cases	18 / 24	15
Outer edge of traffic lane - i.e. working on shoulder	51-70 / >70	18 / 24	< 45
Separating opposing traffic on a 2 lane 2 way road	51-70 / >70	12 / 18	15
Separating opposing traffic on a multilane undivided road	51-70 / >70	12 / 18	30
adjacent to a closed lane on a multilane road	51-70 / >70	12 / 18	60
Merge tapers	51-70 / >70	18 / 24	70
Lateral shift tapers	51-70 / >70	9 / 12	130
Projecting freshly painted lines	51-70 / >70	12 / 18	86-95
Projecting freshly painted lines	51-70 / >70	24 / 60	96-105
PROJECTED PEDESTRIAN ROUTES (MANUAL CASES) 1 & 2: REFER TO MANUAL FOR CENTER LINES	51-70 / >70	24 / 60	N/A
	> 105		N/A

DATE	DESCRIPTION
E	
D	
C	
B	
A	INITIAL SUBMISSION

PREPARED BY: MATTHEW YOUNG
RMS PREPARE A WORKZONE
TRAFFIC MANAGEMENT PLAN
CERTIFICATE No. 0051718898

SIGNED:

Project/Event:	COMMERCIAL REFURBISHMENT
Location:	110-112 KIPPAX STREET, SURRY HILLS NSW
Client:	INFINITY CONSTRUCTIONS PTY LTD
Plan No.	SBMG01708-10
Date:	25TH JULY 2018
SCALE:	NOT TO SCALE

s | b | m | g
 Simg Pty Ltd
 ABN: 34 167 186 580
 mail@simgbrnng.com.au
 m: 02 8834 0762
 f: 02 8834 0762

Traffic Management Plans