


- NOTES:**
- Traffic Control works shall be installed and maintained in accordance with Australian Standards 1742.3 (Traffic Control Devices for Work on Roads) &/or TCAWS (Traffic Control at Work Sites Manual Version 4 June 2010)
  - Local constraints may not allow signs and devices to be placed exactly in accordance with the TCP judgement, therefore it may be necessary to place signs and/or devices as close as possible to the spacing indicated
  - All conflicting signage is to be covered.
  - Pedestrians and Cyclist to be managed through site under Traffic Control.
  - Delineation in tapers to be at a maximum of 12m centres.
  - Delineation adjacent to live traffic must be at a maximum of 12m centres.
  - All signage must be set up so it is clear of obstructions and visible from a minimum of 150m.
  - All speed signs must be a minimum of 600mm from the bottom edge of the sign to the ground.
  - Signs are to be Class 1 retro-reflective, positioned adjacent to footpath or where vehicle parking occurs place signs in the parking lane or elevated on posts. They must be positioned so that they are in clear view of passing motorists
  - All signage must be in accordance with RMS - Sign Design
  - All portable traffic signals must be manned by qualified traffic controllers

**NSW AND ACT TABLES**

RECOMMENDED TAPER LENGTHS AND SIGN DISTANCES AS OUTLINED AS "D" ON TCPS (NSW) AND TTMF (ACT)

	TCAWS 45 OR LESS	TCAWS 46 - 55	TCAWS 56 - 65	TCAWS 66 - 75	TCAWS 76 - 85	TCAWS 86 - 95	TCAWS 96 - 105	TCAWS >105	
<b>POSTED SPEED LIMIT KM/HR</b>	AS1742.3	AS1742.3	AS1742.3	AS1742.3	AS1742.3	AS1742.3	AS1742.3	AS1742.3	
<b>TRAFFIC CONTROL AT BEGINNING OF TAPER</b>	15m	15m	30m	N/A	N/A	N/A	N/A	N/A	
<b>LATERAL SHIFT TAPER</b>	0m	15m	30m	70m	80m	90m	100m	110m	
<b>MERGE TAPER</b>	15m	30m	60m	115m	130m	145m	160m	180m	
<b>SIGN DISTANCES</b>	TCAWS 40km=40m AS1742.3 40km=50m 50km=50m 60km=50m 80km=50m 90km=50m 100km=50m 110km=50m	TCAWS 40km=40m AS1742.3 40km=50m 50km=50m 60km=50m 80km=50m 90km=50m 100km=50m 110km=50m	TCAWS 60km=60m AS1742.3 60km=60m 70km=60m 80km=60m 90km=60m 100km=60m 110km=60m	TCAWS 70km=70m AS1742.3 70km=70m 80km=70m 90km=70m 100km=70m 110km=70m	TCAWS 80km=80m AS1742.3 80km=80m 90km=80m 100km=80m 110km=80m	TCAWS 90km=90m AS1742.3 90km=90m 100km=90m 110km=90m	TCAWS 100km=100m AS1742.3 100km=100m 110km=100m	TCAWS 110km=110m AS1742.3 110km=110m	TCAWS >110km=110m AS1742.3 >110km=110m

**NOT TO SCALE**



Client: D Houghton Plumbing  
 Location: Marsden St., Camperdown  
 Description: Road Closure with Detour  
 Plan Number: 2018-0941  
 Date Drawn: 13/7/2018

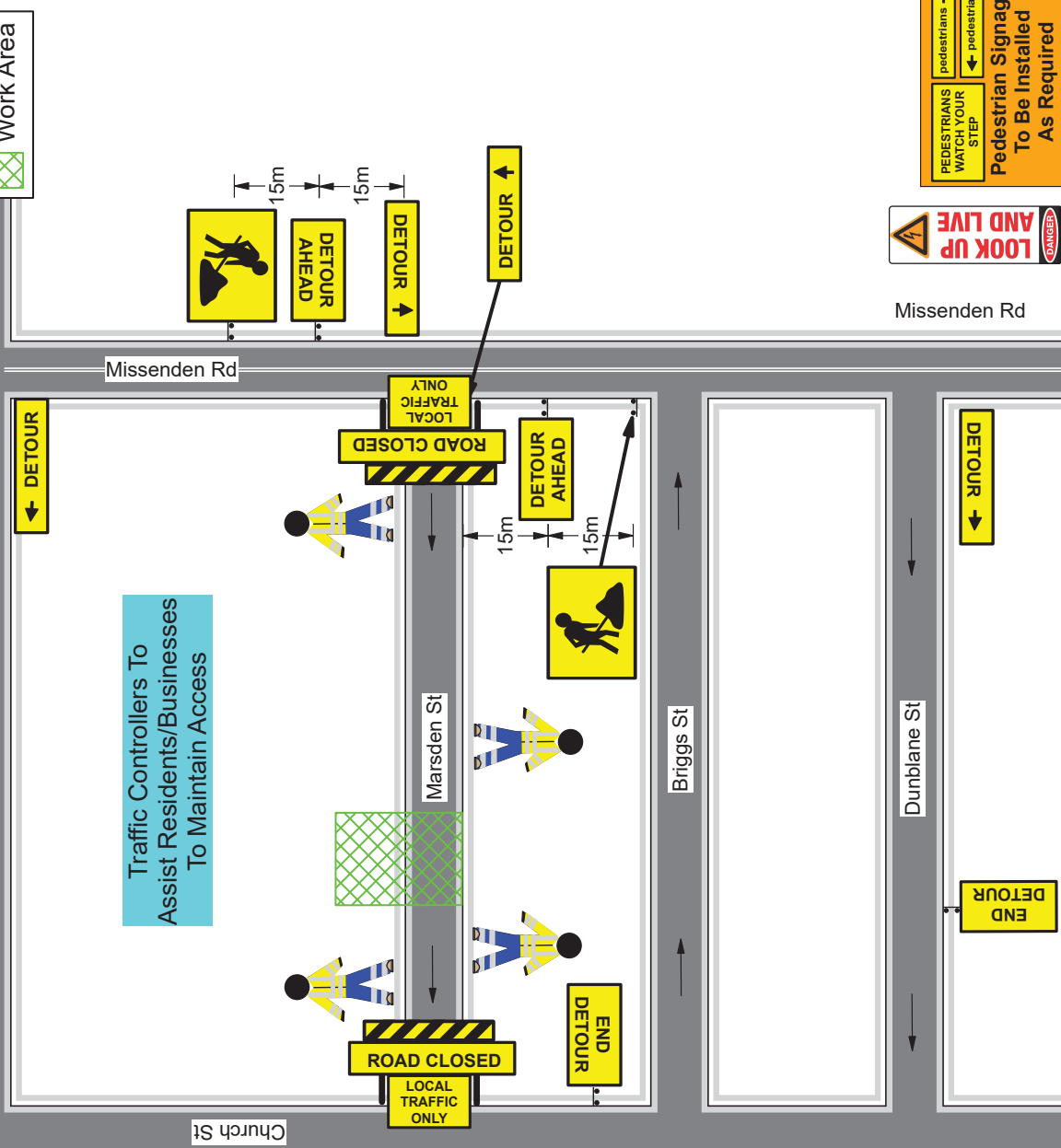
Plan Drafted By: *Elissa McDonald*  
 Prepare Work Zone TMP: 0051168527

TCPS BEST VIEWED WHEN PRINTED IN A3

Lack Group t/a K & D Traffic Management  
 2/13 Stanton Rd,  
 Seven Hills NSW 2147  
 P: 1300-205-579  
 email: lgp@lackgroup.com.au

**Legend**

 Work Area



Traffic Controllers To Assist Residents/Businesses To Maintain Access

**LOOK UP AND LIVE**

PEDESTRIANS WATCH YOUR STEP

PEDESTRIANS →

← PEDESTRIANS

**Pedestrian Signage To Be Installed As Required**

Description of Revision:

Rev	Date	Revised by	Description
Rev 1:	EM 26.07.18	EM	Amended TCP Design add in work area add traffic controllers
Rev 2:	EM 02.08.18	EM	Local Traffic Only Signs Added
Rev 3:			
Rev 4:			

TCAWS TCP Reference Number: TCP# 54  
 Checked By: Peter Turner  
 Prepare Work Zone TMP 0036129415

