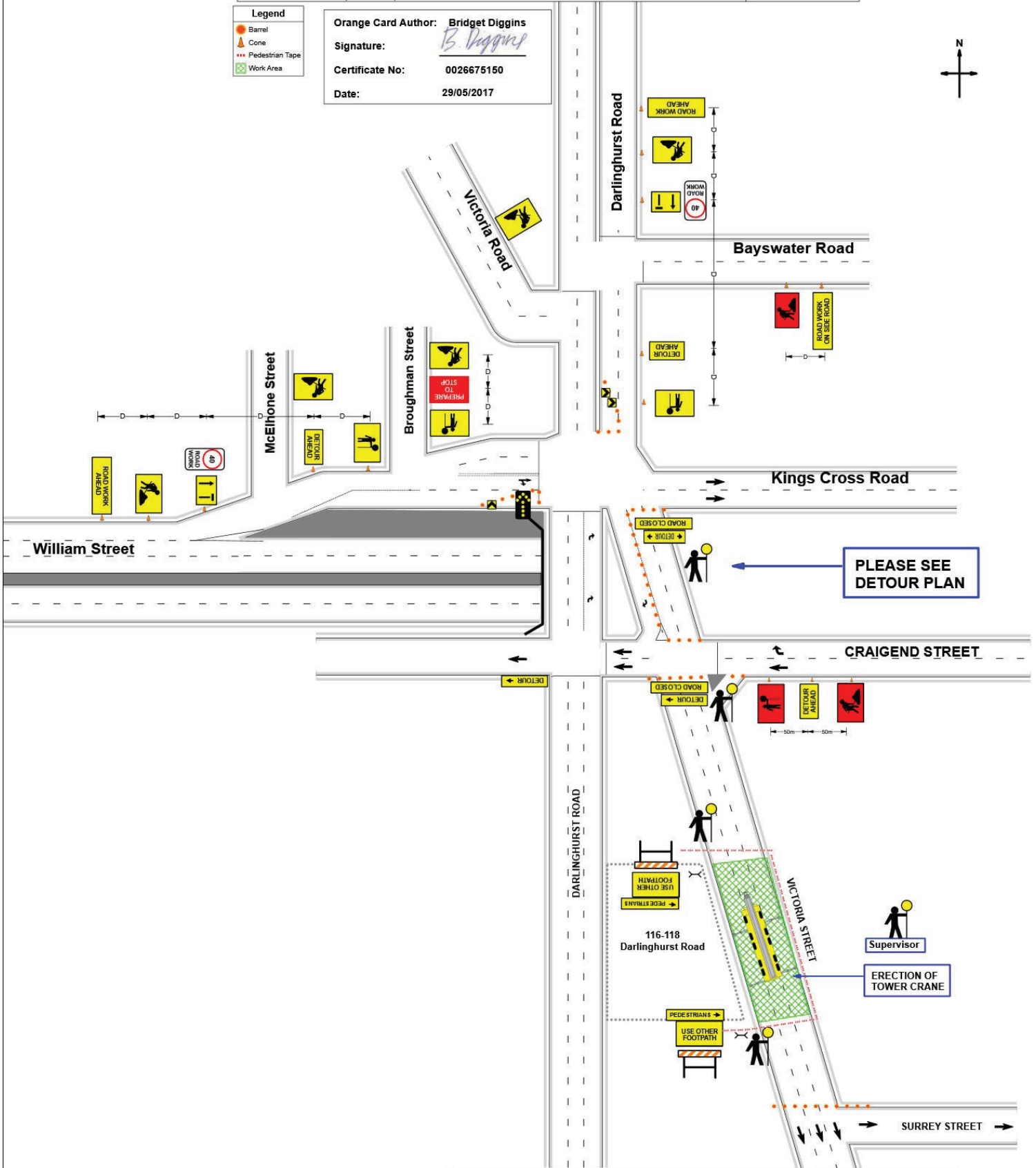


	DATE: 29/05/2018	TRAFFIC CONTROL PLAN	
	LOCATION CUSTOMER: 116-118 Darlinghurst Road, Darlinghurst	NAME: Bridget Diggins	0026675150
	TCP No. DETOUR STH	Licence No: 0026675150	

This traffic control plan is drawn to AS1742.3 and the S.T.A. workable manual for traffic control at work zones. It is to be implemented on site but must be signed off by an S.T.A. accredited person.
 Approved: Approved for use by S.T.A. Accredited Person. Approved: Approved for use by S.T.A. Accredited Person. Approved: Approved for use by S.T.A. Accredited Person. Approved: Approved for use by S.T.A. Accredited Person. Approved: Approved for use by S.T.A. Accredited Person.

- Legend**
- Barrel
 - Cone
 - Pedestrian Tape
 - Work Area

Orange Card Author: **Bridget Diggins**
 Signature: *B. Diggins*
 Certificate No: **0026675150**
 Date: **29/05/2017**



Red Card Holder

Name: _____

Signature: _____

Cert No: _____

Amendments Required ? Y/N _____

* All sign spacing & taper lengths are in accordance with Australia Standards AS 1742.03 & RMS TCWS manual 4.0. Distances between signs may vary due to onsite constraints i.e. parked vehicles/vegetation etc. (plan not to scale)

* Traffic Controller to conduct Stop/Slow procedures to assist with work vehicle movements as required

* Traffic Controller are to assist Pedestrian around work area as required

* Pedestrian signs to be installed as required

Dm [Speed Limit]	Merge Taper Length	Lateral Taper Length	Buffer Length
45 or Less	15		30
46 to 55	30	15	30
56 to 65	60	30	30
66 to 75	115	70	30
76 to 85	130	80	40
86 to 95	145	90	40
96 to 105	160	100	50
Greater Than 105	180	110	60

Based on As 1742.3 - 2009

