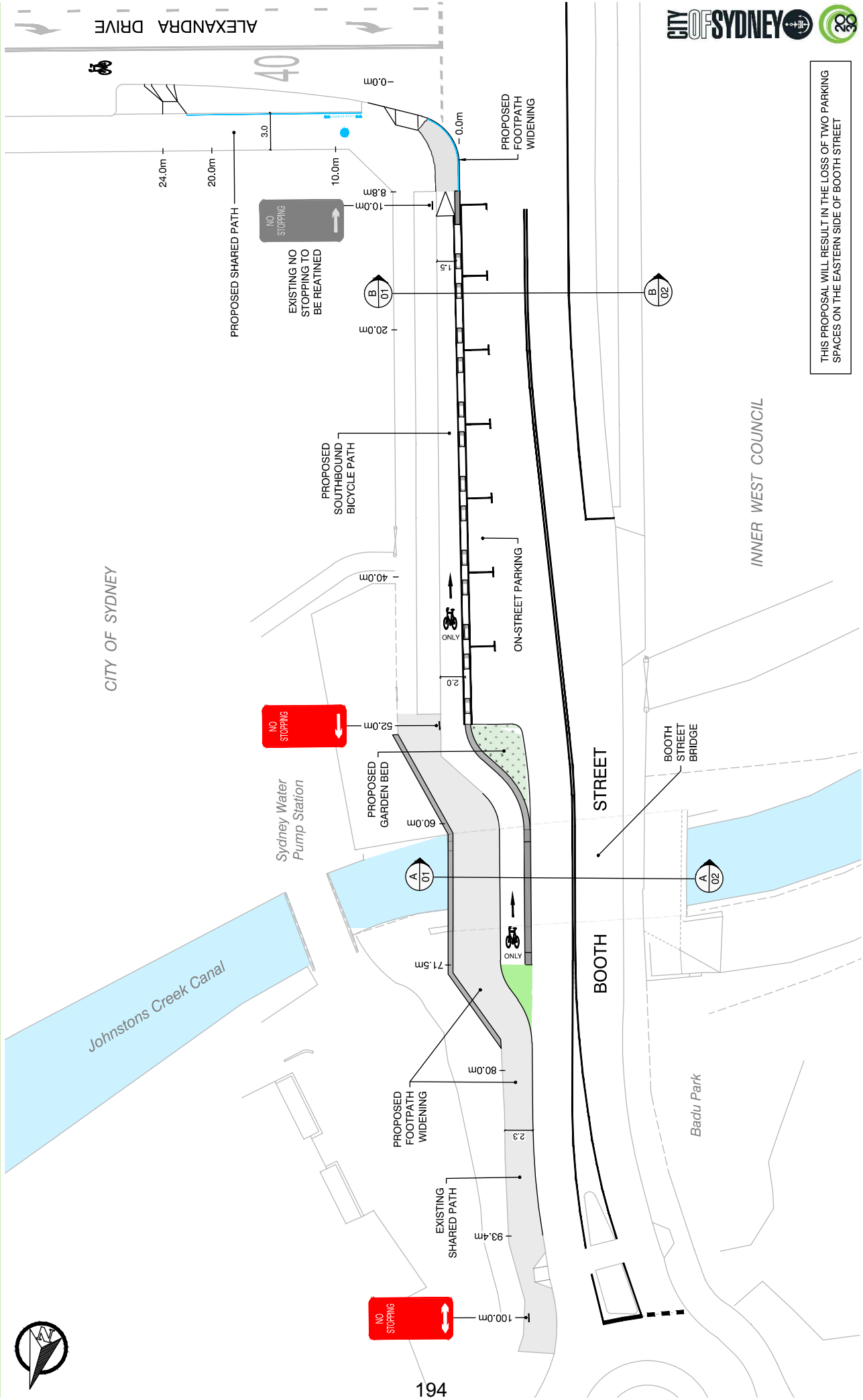


Booth Street and Alexandra Drive, Annandale and Camperdown

Walking and cycling improvements

01



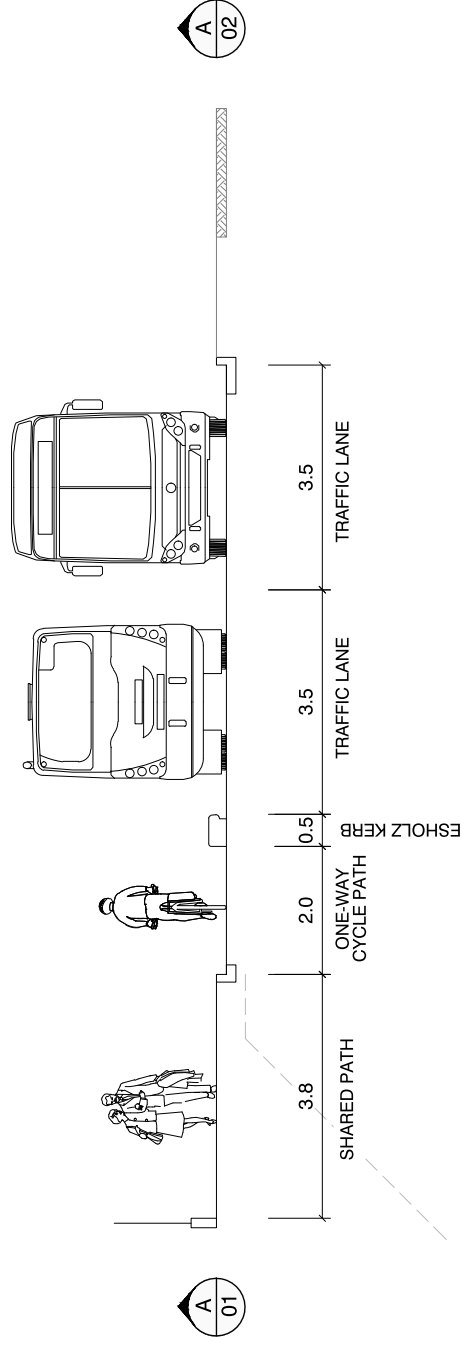
THIS PROPOSAL WILL RESULT IN THE LOSS OF TWO PARKING SPACES ON THE EASTERN SIDE OF BOOTH STREET

Booth Street and Alexandra Drive, Annandale and Camperdown

Walking and cycling improvements

02

SECTION A-A



SECTION B-B

