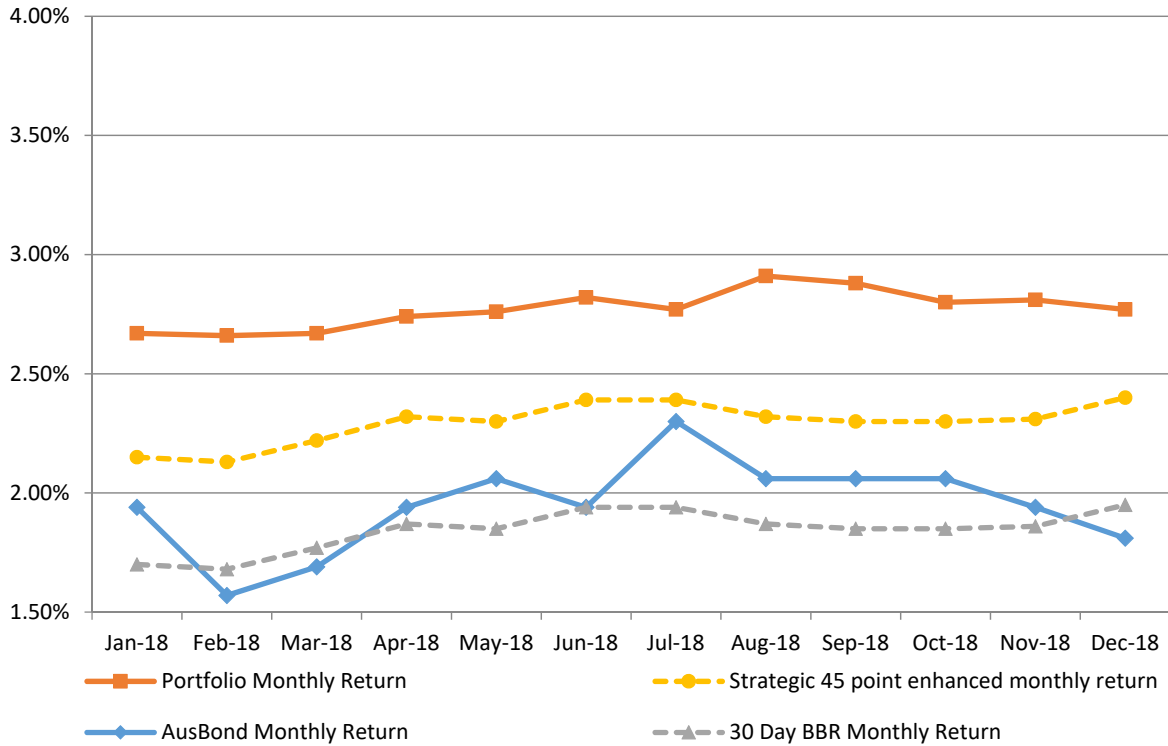


Attachment B

**Investment Performance
as at 31 December 2018**

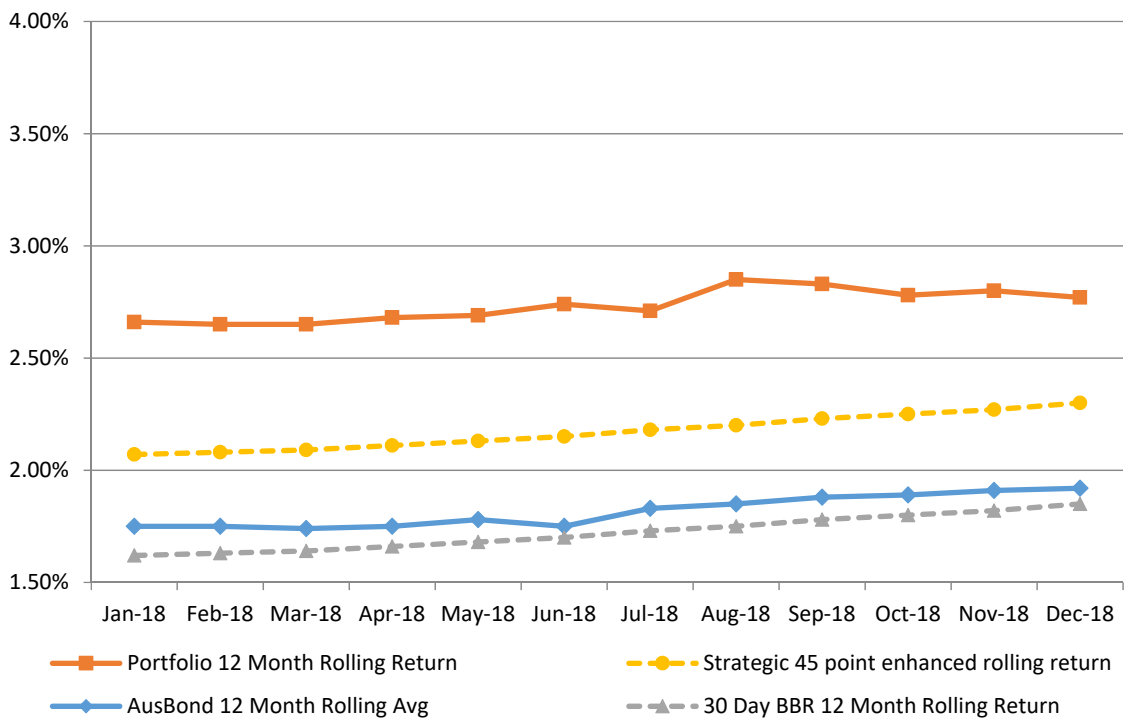
Monthly Results

**Actual Portfolio vs Strategic Enhanced Benchmark vs AusBond Benchmark vs 30 Day BBR Benchmark
December 2018**

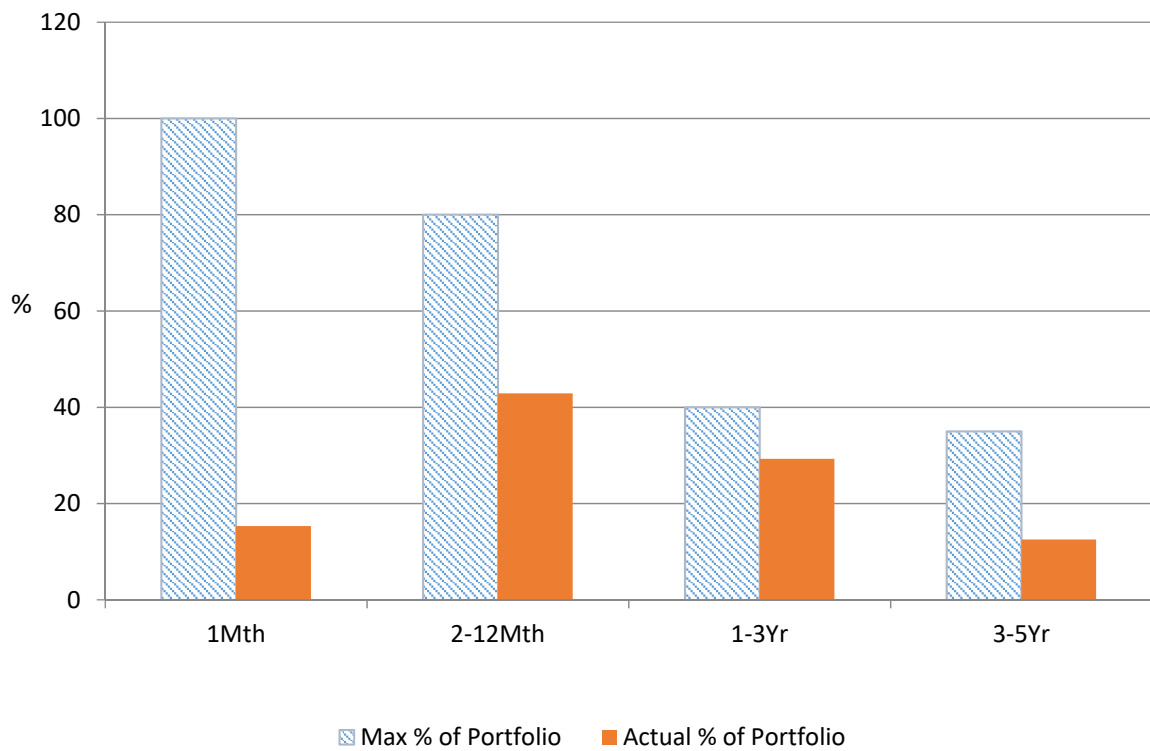


12 Month Rolling Averages

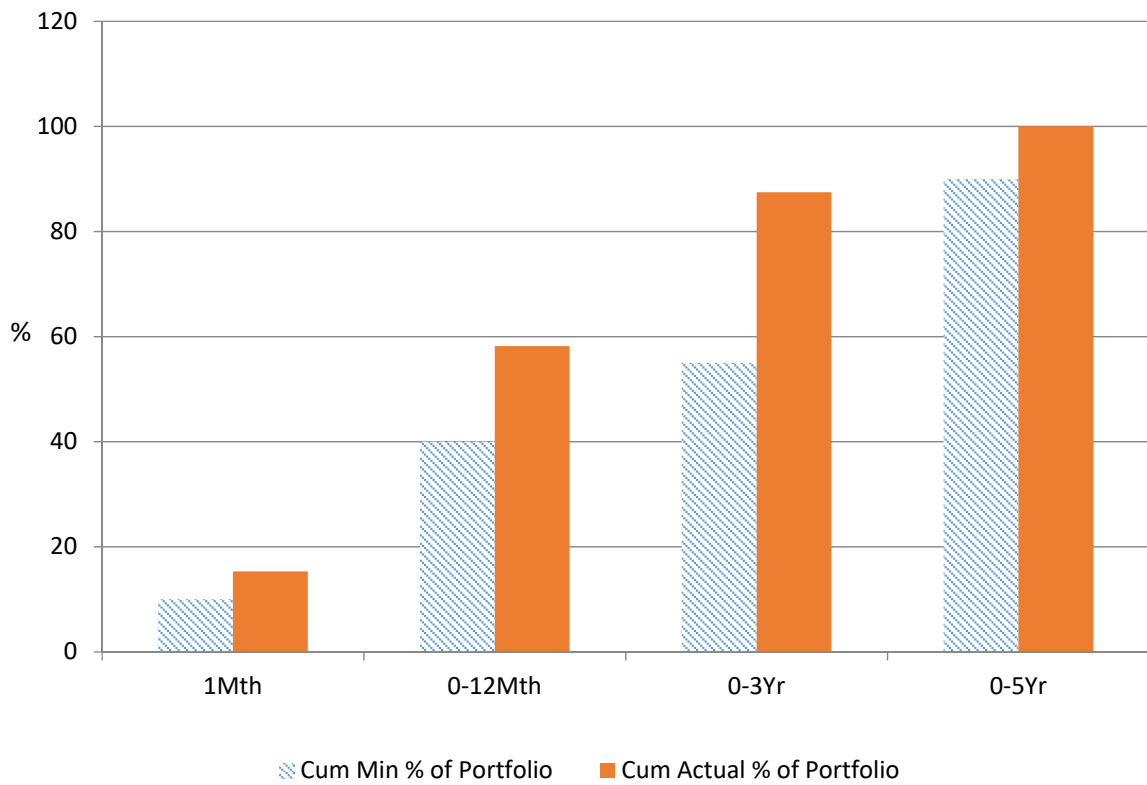
**Actual Portfolio vs Strategic Enhanced Benchmark vs AusBond Benchmark vs 30 Day BBR Benchmark
December 2018**



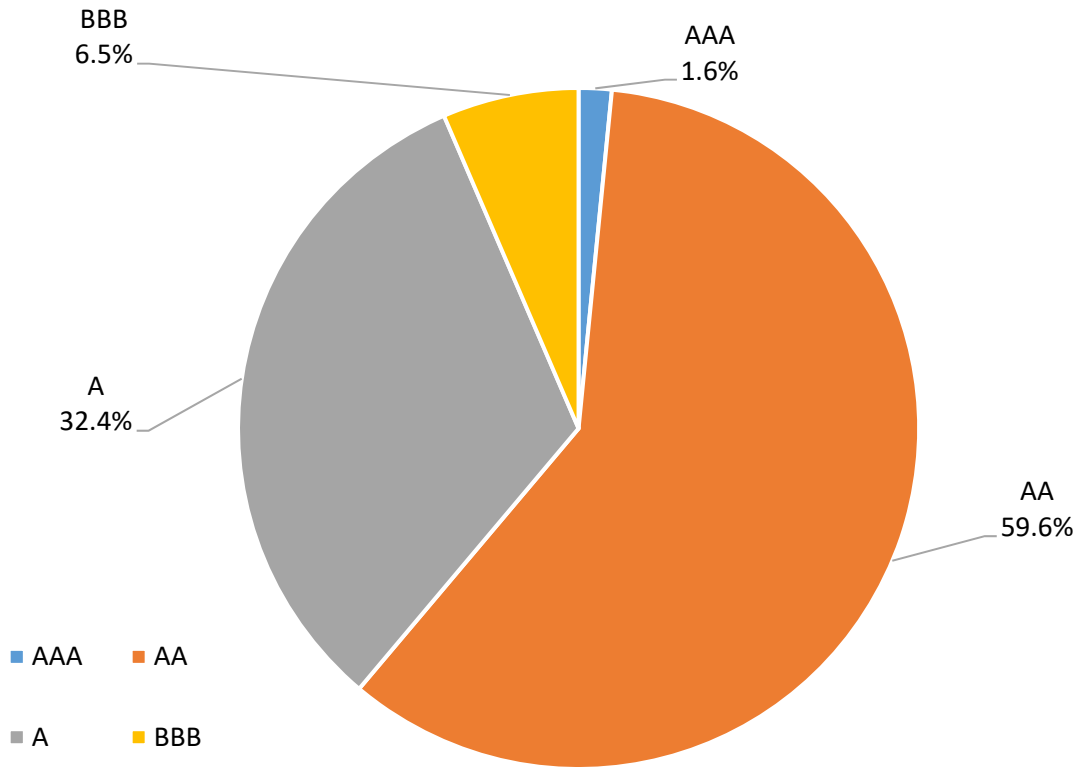
% Liquidity - Maximum Allowances as at 31 December 2018



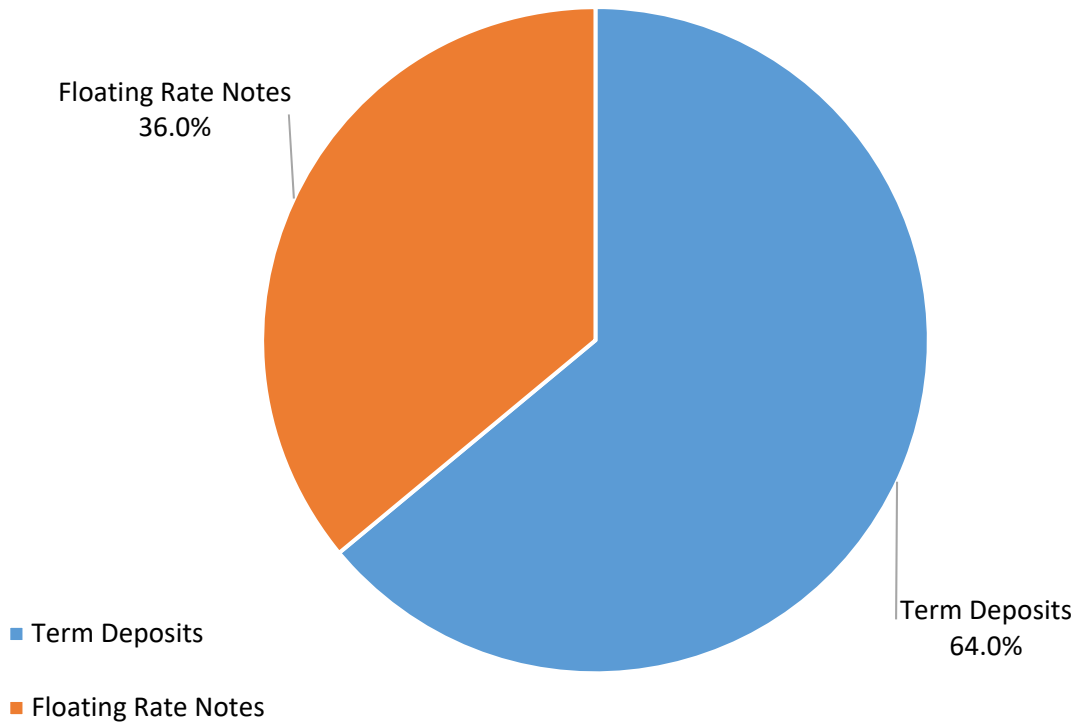
% Liquidity - Minimum Allocations as at 31 December 2018



Risk Profile as at 31 December 2018



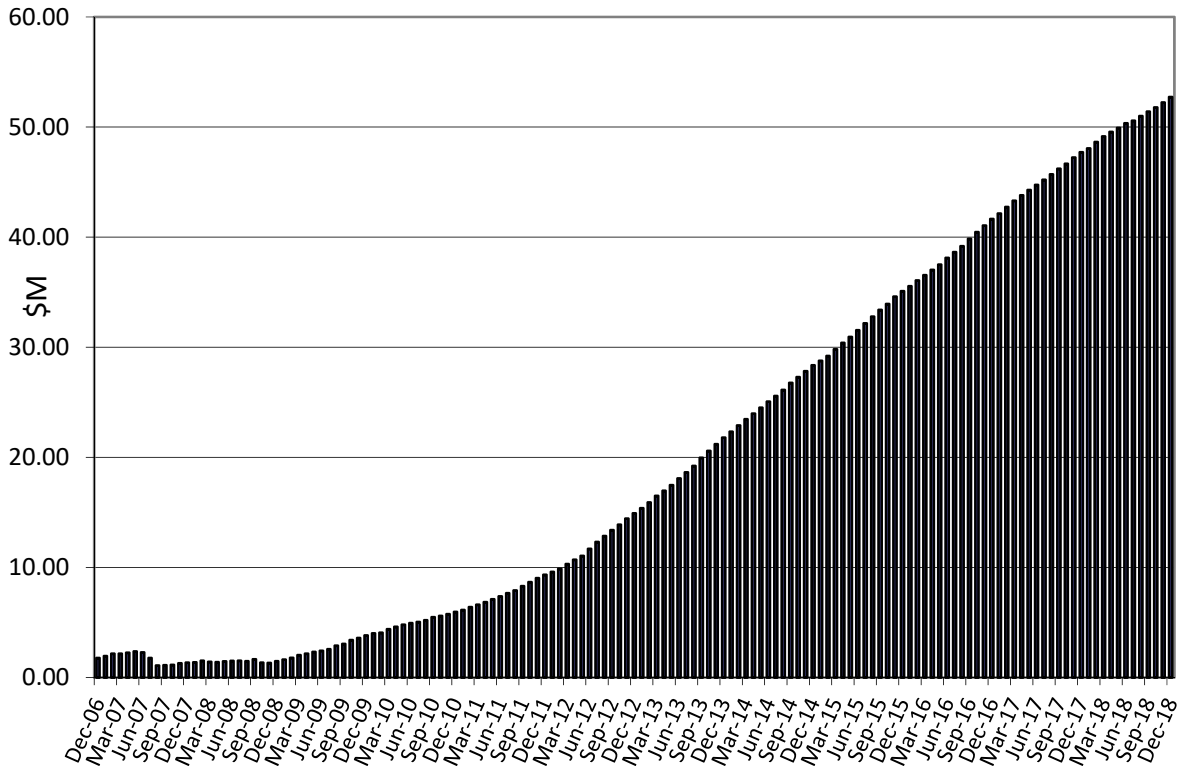
Investment Product Profile as at 31 December 2018



**Investment and cash distribution by financial institution as at
31 December 2018**

Institution Category	Financial Institution	Amount \$M	Financial Inst. %	Institution Cat. %
Australian Big 4 Bank (and related institutions)	ANZ Bank	40.0	6.5	
	Commonwealth Bank-related:	78.1	12.7	
	<i>Bankwest</i>	<i>45.0</i>	<i>7.3</i>	
	<i>Commonwealth Bank</i>	<i>33.1</i>	<i>5.4</i>	
	National Australia Bank	73.5	11.9	
	Westpac Banking Corporation	180.3	29.3	
Big 4 Total		371.9		60.4
Other Australian ADIs and Australian subsidiaries of foreign institutions	AMP Bank Ltd	10.0	1.6	
	Bank of China – Sydney	4.5	0.7	
	Bank Of Queensland	34.0	5.5	
	Bendigo and Adelaide Bank	35.0	5.7	
	CUA Limited	45.0	7.3	
	Greater Bank	5.0	0.8	
	Heritage Bank	3.5	0.6	
	IMB	5.0	0.8	
	Members Equity Bank	29.7	4.8	
	Newcastle Permanent Building Society	17.0	2.8	
	Royal Bank of Canada - Sydney	5.0	0.8	
	Suncorp Bank	50.0	8.1	
Other ADI Total		243.7		39.6
Grand Total		615.6	100.0	100.0

Cumulative Outperformance over AusBond Benchmark - 2006-2018



Cumulative Outperformance over 30 Day BBR Benchmark - 2006-2018

