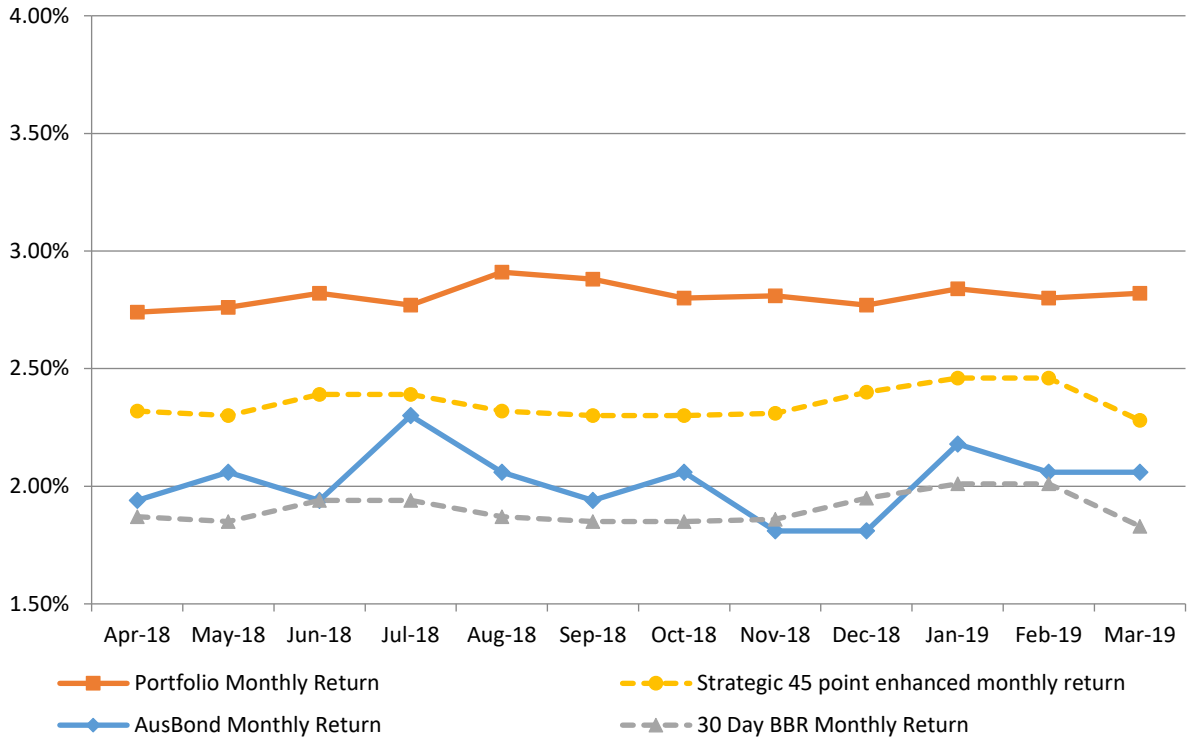


# **Attachment B**

**Investment Performance  
as at 31 March 2019**

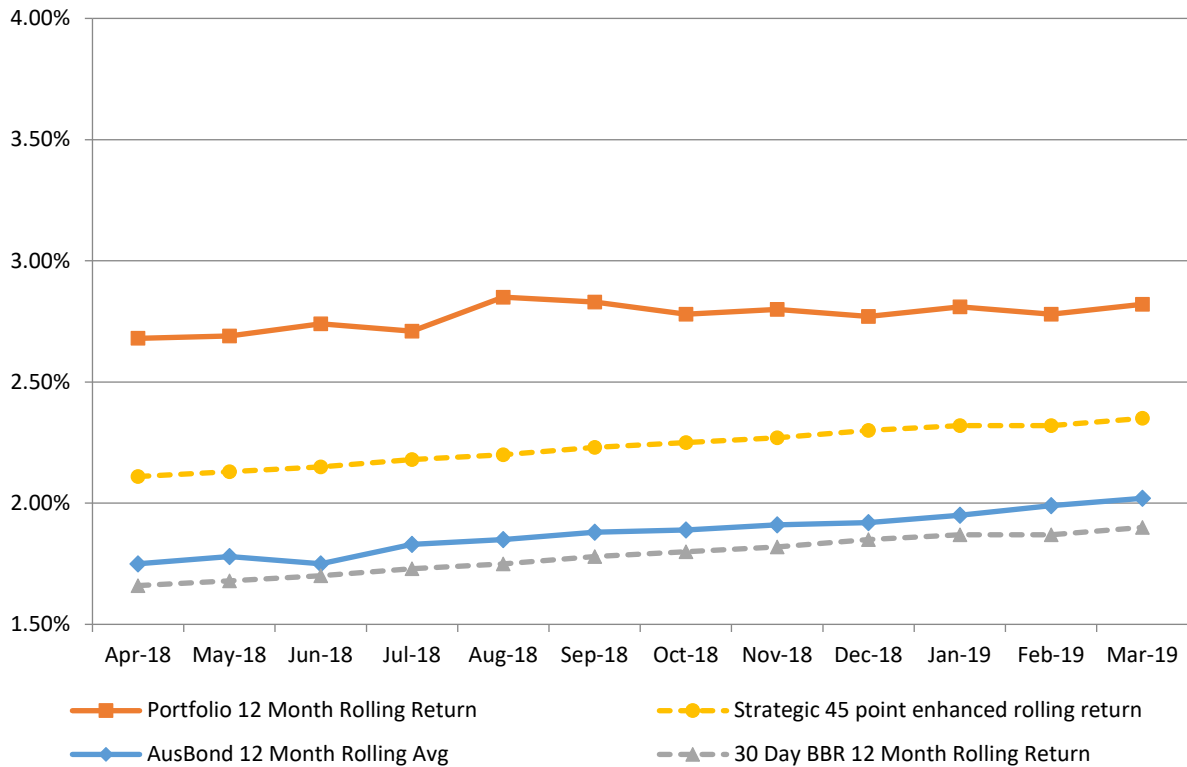
## Monthly Results

**Actual Portfolio vs Strategic Enhanced Benchmark vs AusBond Benchmark vs 30 Day BBR Benchmark  
March 2019**

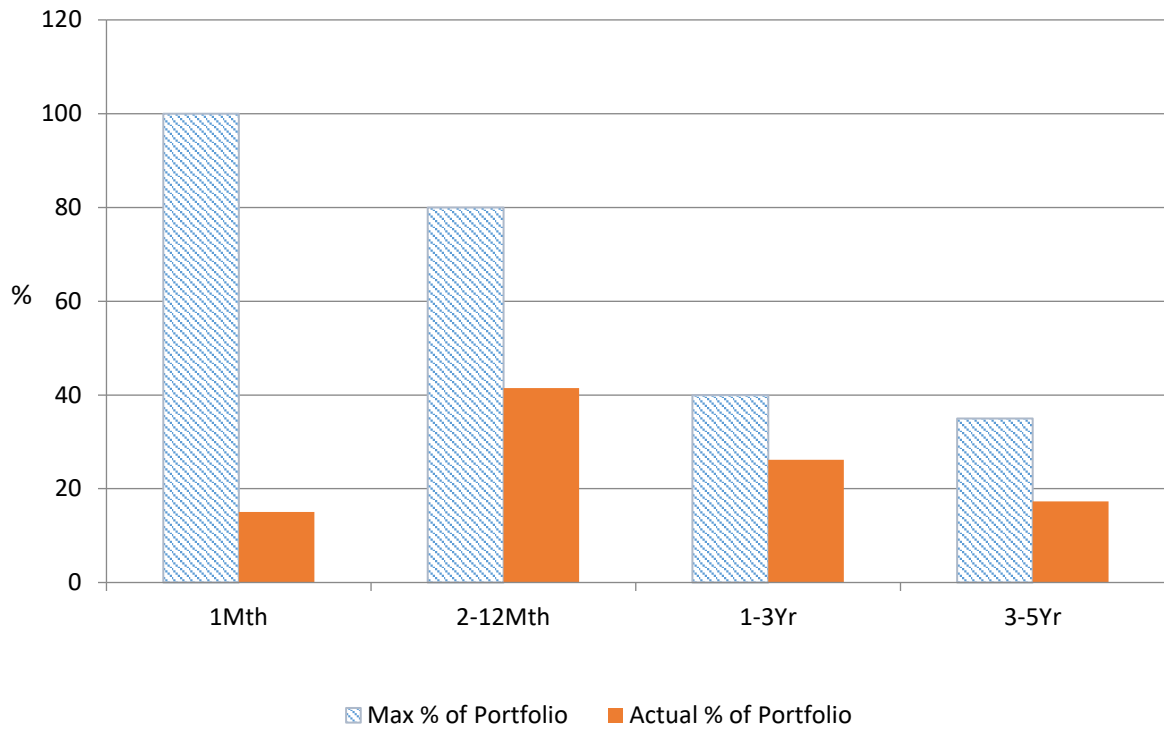


## 12 Month Rolling Averages

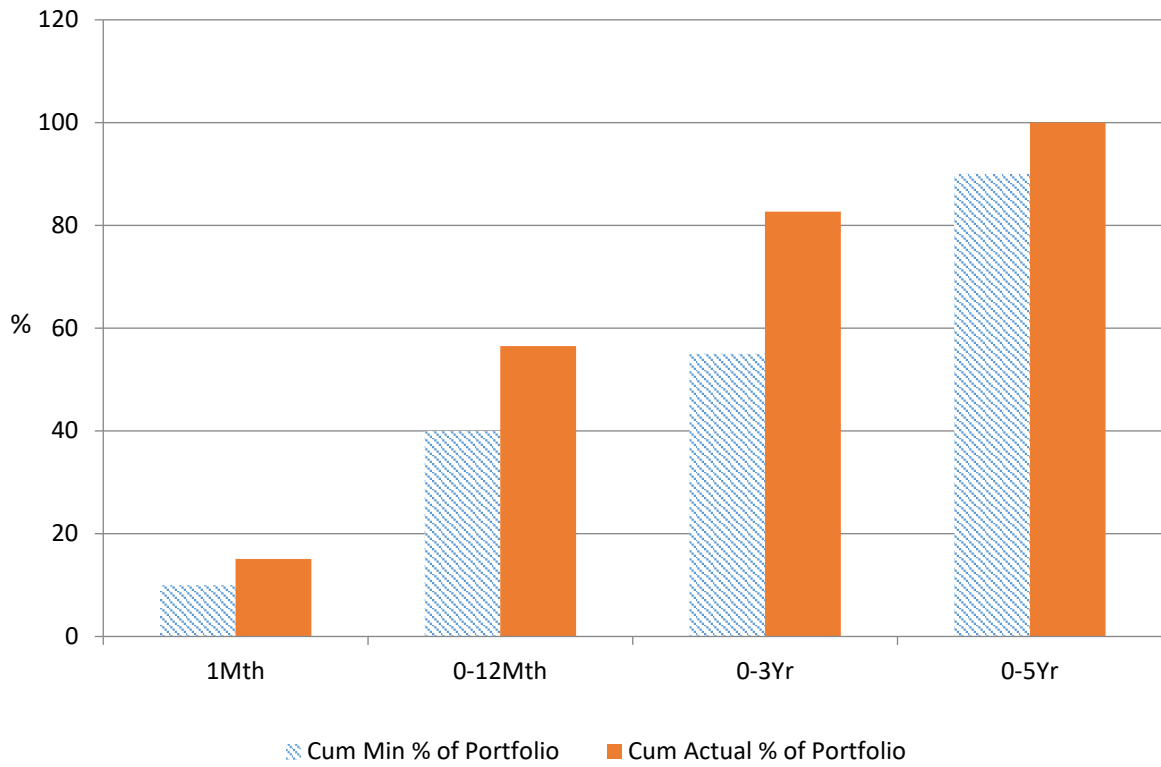
**Actual Portfolio vs Strategic Enhanced Benchmark vs AusBond Benchmark vs 30 Day BBR Benchmark  
March 2019**



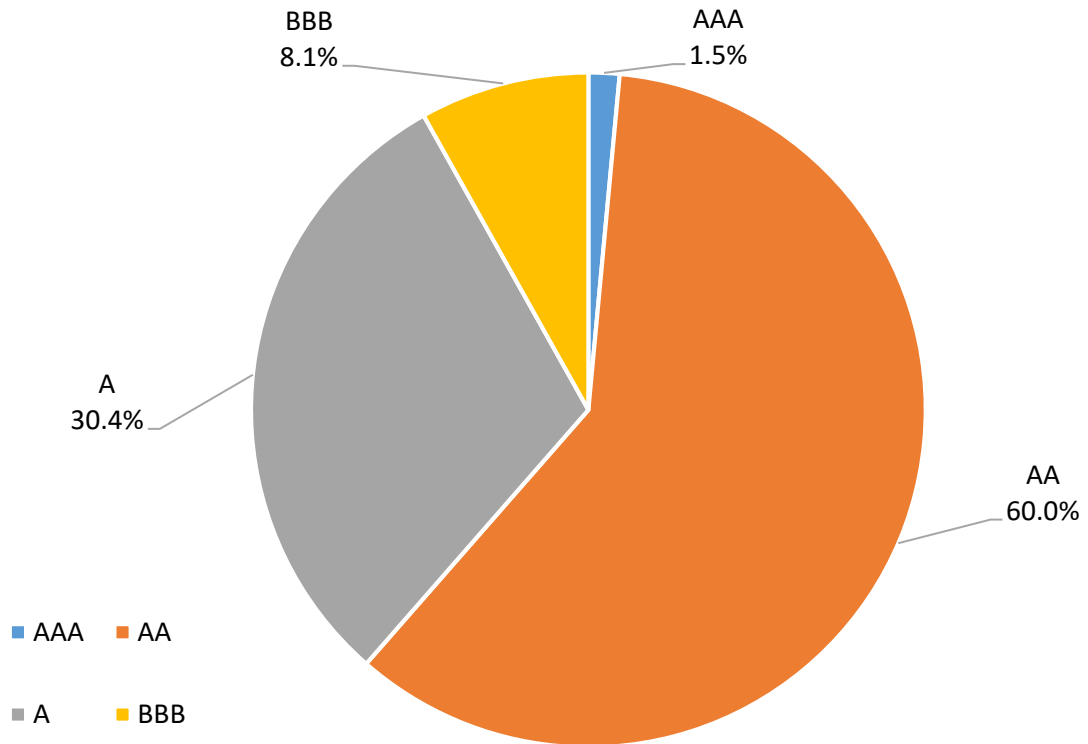
**% Liquidity - Maximum Allowances as at 31 March 2019**



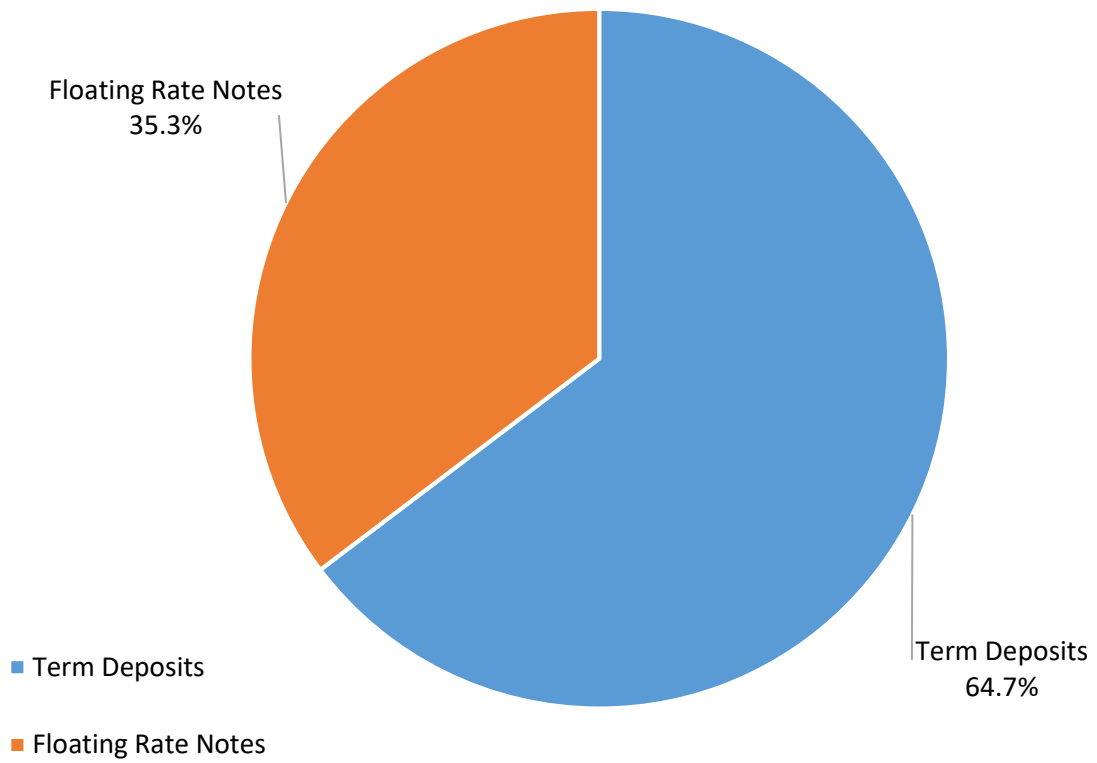
**% Liquidity - Minimum Allocations as at 31 March 2019**



### Risk Profile as at 31 March 2019



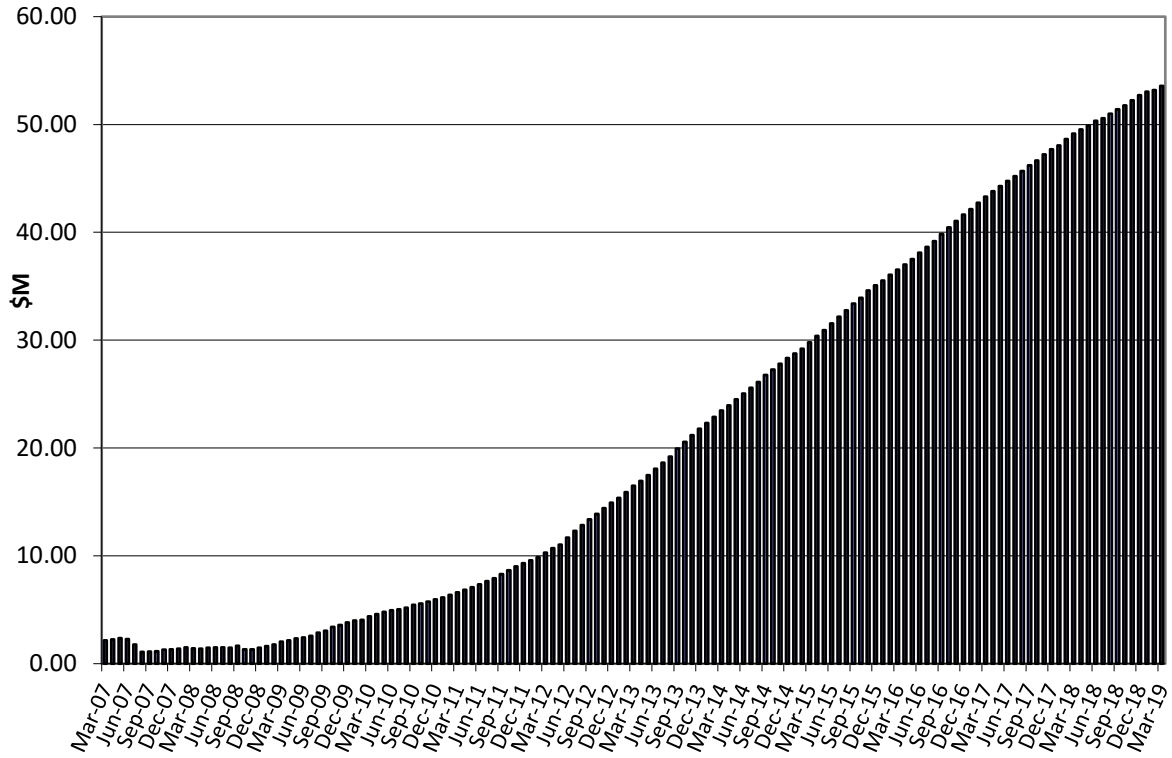
### Investment Product Profile as at 31 March 2019



**Investment and cash distribution by financial institution as at  
31 March 2019**

Institution Category	Financial Institution	Amount \$M	Financial Inst. %	Institution Cat. %
Australian Big 4 Bank (and related institutions)	ANZ Bank	44.0	7.2	
	Commonwealth Bank-related:	103.1	16.8	
	<i>Bankwest</i>	<i>50.0</i>	<i>8.1</i>	
	<i>Commonwealth Bank</i>	<i>53.1</i>	<i>8.6</i>	
	National Australia Bank	67.5	11.0	
	Westpac Banking Corporation	154.8	25.2	
<b>Big 4 Total</b>		<b>369.4</b>		<b>60.0</b>
Other Australian ADIs and Australian subsidiaries of foreign institutions	AMP Bank Ltd	10.0	1.6	
	Bank of China – Sydney	4.5	0.7	
	Bank Of Queensland	44.0	7.2	
	Bendigo and Adelaide Bank	40.0	6.5	
	CUA Limited	31.5	5.1	
	Greater Bank	5.0	0.8	
	Heritage Bank	3.5	0.6	
	IMB	5.0	0.8	
	Members Equity Bank	49.8	8.1	
	Newcastle Permanent Building Society	12.5	2.0	
	Royal Bank of Canada - Sydney	5.0	0.8	
	Suncorp Bank	35.0	5.7	
<b>Other ADI Total</b>		<b>248.8</b>		<b>40.0</b>
<b>Grand Total</b>		<b>615.2</b>	<b>100.0</b>	<b>100.0</b>

**Cumulative Outperformance over AusBond Benchmark - 2007-2019**



**Cumulative Outperformance over 30 Day BBR Benchmark - 2007-2019**

