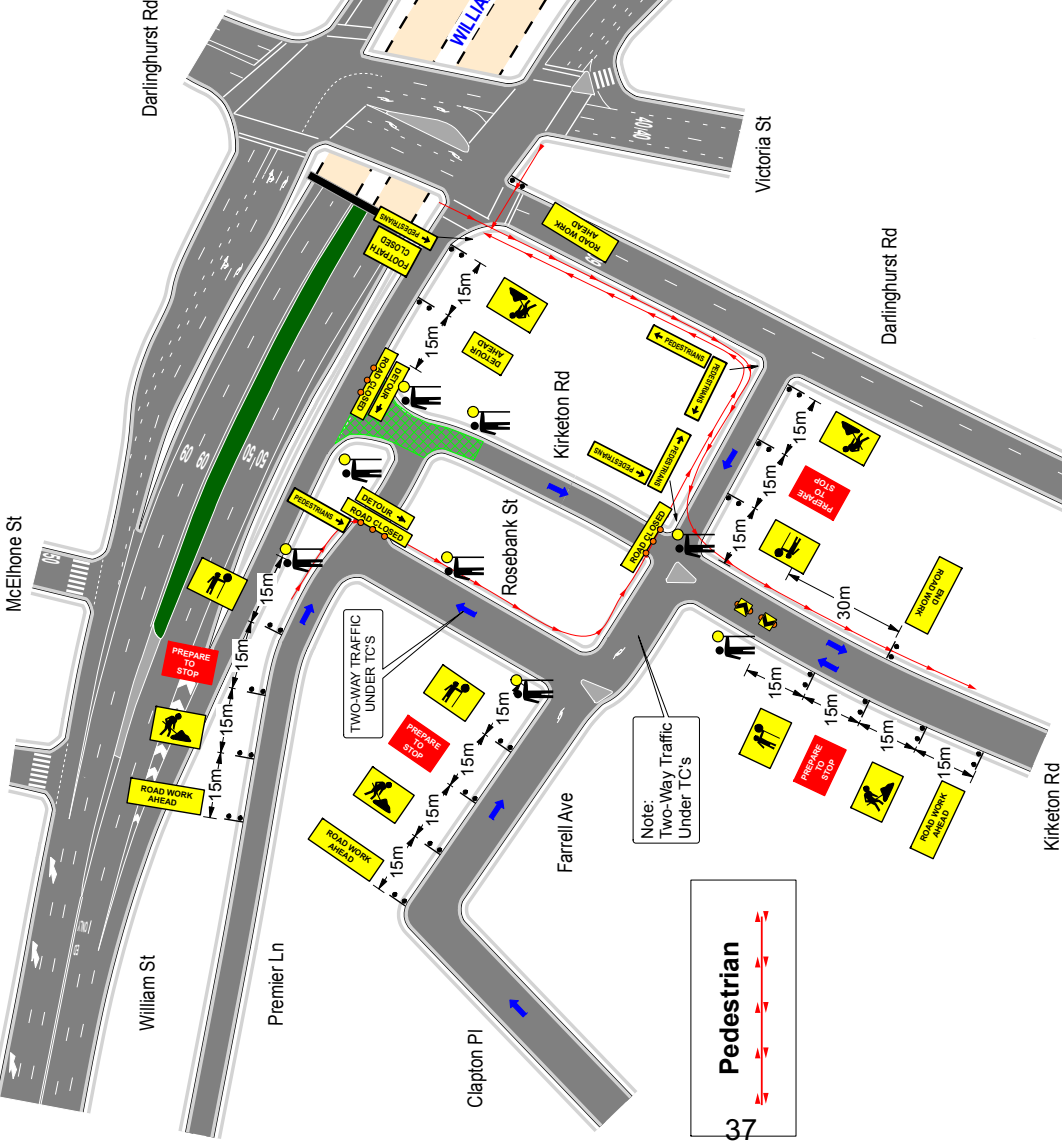


**Note:**  
**DATES OF CLOSURE**  
**Monday 15th July 2019**  
**Tuesday 16th July 2019**  
**8pm to 5am**  
**Contingency**  
**Wednesday 17th July 2019**



**LEGEND**

- Cones
- Work zone
- Class arrow
- Traffic controller
- Traffic vehicle

x 0  
x 7  
x 0

**TCP APPROVED BY: Justin Cheetham**  
**LEVEL 3 TICKET NUMBER (NSW): 0032441530**  
**SIGNATURE:**   
**LEVEL 3 EXP DATE: 15th July 2019**

**TCP DRAWN BY: Ashley Kelly**  
**LEVEL 3 TICKET NUMBER (NSW): 0032737316**  
**SIGNATURE:**   
**LEVEL 3 EXP DATE: 10th July 2019**

Issued as per TCP and in accordance with any changes as shown on TCP.  
 Team leader (on site):  
 Signature:  
 Date:  
 Ticket No:  
 Reason for modification:

Comments: See item TCP  
 -Cones to be min 700mm high & installed 500mm from edge and lane lines  
 -Where required adjust sign spacing to account for crests, curves & corners  
 -One truck to do regular sign/maintenance after ensuring workers are in a safe location  
 -Signs behind concrete wire rope barriers are to be installed on adjustable legs  
 -All staff to have white overalls with reflective strips on rights  
 -All staff to have reflective safety vests  
 -Maintain daily logs of ALL activities  
 -All signs to be Class 1, 1m x 0.7m  
 -This TCP drawn in accordance with AS1742.3 & the RTAs TCAMS Manual

**NOTES:**  
 - THIS TRAFFIC GUIDANCE SCHEME WAS DEVELOPED BY COMPETENT AND EXPERIENCED PERSONS AND IN ACCORDANCE WITH THE REQUIREMENTS OUTLINED IN AUSTRALIAN STANDARD - AS1742.3 AND THE ROAD MANAGEMENT ACT 2004. BEFORE THE COMMENCEMENT OF ROUTINE SERVICES OR ANY OTHER SERVICES, ALL US WILL CARRY OUT A RISK ASSESSMENT AND DEVELOP CONTROLS, MEASURES AND DETOURS TO PROTECT THE SAFETY OF ALL ROAD USERS.  
 - THIS PLAN WAS DEVELOPED TO ALLOW FOR THE SAFE MOVEMENT OF VEHICULAR AND PEDESTRIAN TRAFFIC AROUND THE WORKSITE, THE PROTECTION OF WORKERS FROM PASSING TRAFFIC, THE PROVISION FOR ACCESS TO PROPERTIES LOCATED WITHIN THE LIMITS OF THE WORKSITE, THE PROVISION OF TEMPORARY ROAD DELINEATION, AND ANY OTHER SAFETY MEASURES OR TEMPORARY SIGNS, SAFETY BARRIERS WHEN REQUIRED.  
 - ALL US TRAFFIC DOES NOT ACCEPT RESPONSIBILITY FOR COMPLIANCE OF THIS PLAN WHEN IMPLEMENTED.  
 - THIS PLAN IS NOT TO SCALE AND IS A REPRESENTATION ONLY AFTER A JOB SAFETY ANALYSIS IS COMPLETED ON SITE. CHANGES MAY BE MADE BY ACCREDITED PERSONS. ALL AMENDMENTS WILL BE OUTLINED AND RECORDED IN A WORKSITE DIARY / SWMS FORM.

ISSUE	DESIGN	APPD	DATE	AMENDMENT DESCRIPTION

**MAP REF**

**PROJECT:** KIRKETON RD, DARLINGHURST CITY OF SYDNEY

**TITLE:** TRAFFIC MANAGEMENT PLAN ROAD CLOSURE

**SCALE:** NOT TO SCALE

**DESIGNED:** ASHLEY KELLY    **DATE:** 02-MAY-2019

**APPROVED:** JUSTIN CHEETHAM

**DRAWING NUMBER:** TCP-HAN-DHURST-FC-003

**SHEET NO:** 1 OF 1    **ISSUE:** 00

**ALTUS TRAFFIC**  
 Safely Managing Risk

**Call Altus Traffic**  
 Toll Free (Australia)  
 1-300 TRAFFIC (872 334)  
 ABN 84 102 768 081    [www.inyourface.com.au](http://www.inyourface.com.au)