

Date: 07/01/2019 Author: Craig Reeves Project: 1-7 Wellington Street, Chippendale www.invarion.com
 Client: TPD Projects Contact: Jim Griffin Phone: 0437235973
 Plan Number: 1198/19



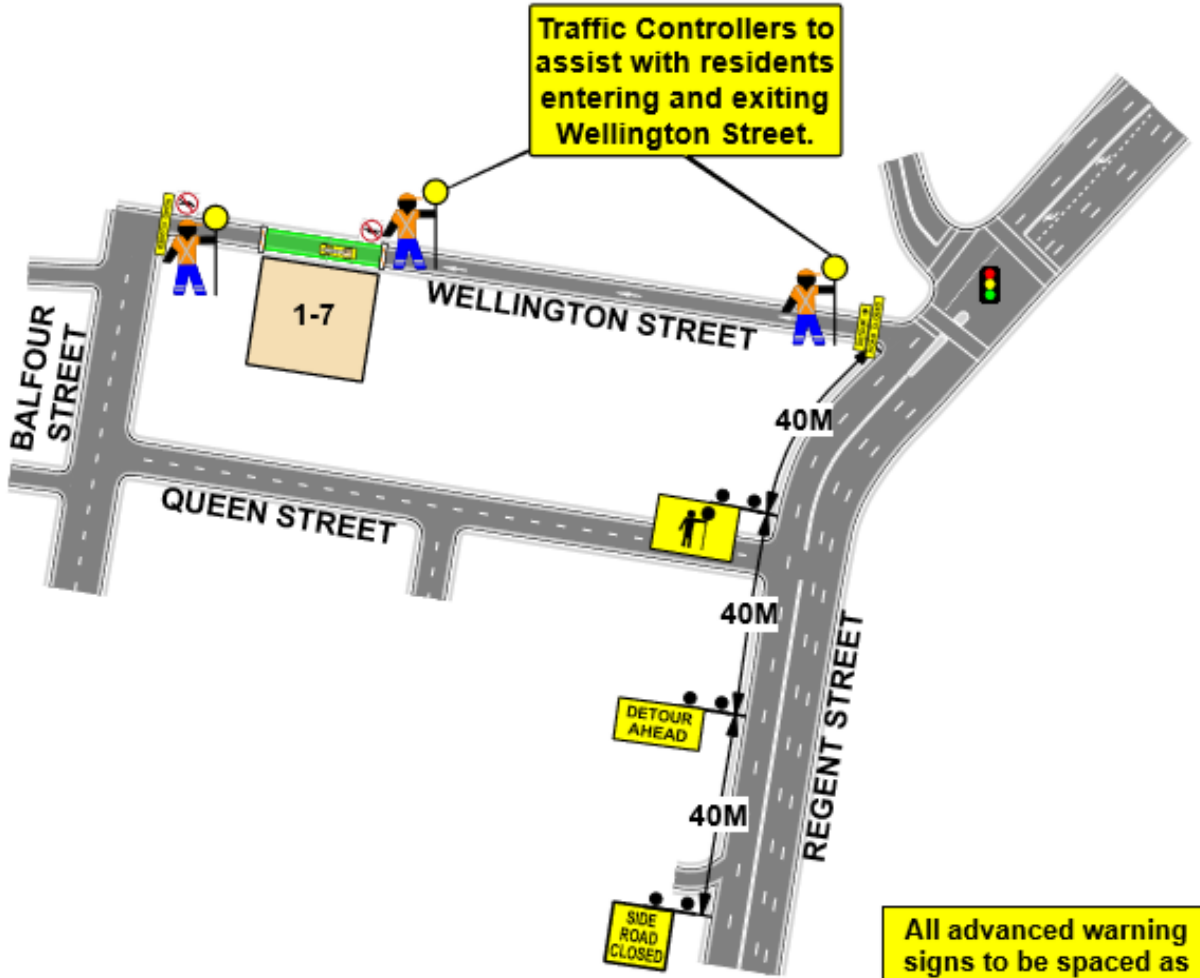
Comments:
 This plan was designed by Craig Reeves of Sydney Traffic Control in accordance with Australian Standards and the RMS's Traffic Control on Worksite Handbook Version 4.0. The plan is designed for the safe closure of Wellington Street, Chippendale for the setup of a mobile crane for the lifting of materials to site. During work detours will be in place. Certified Traffic Controllers will be on site to implement and monitor this TCP. Sydney Traffic Control holds no responsibility for this TCP unless Sydney Traffic Control employees are used to implement and monitor this TCP. All traffic control plans are copyright/property of Sydney Traffic Control and are not transferable unless authorized by Sydney Traffic Control. Any question please contact Craig Reeves of Sydney Traffic Control on 80681844 or 0451114280.

Transport
 South & Western
 NSW
 Traffic Management
 Unit No. 88402862

CRS
 REEVES
 Entry No:
 1904208

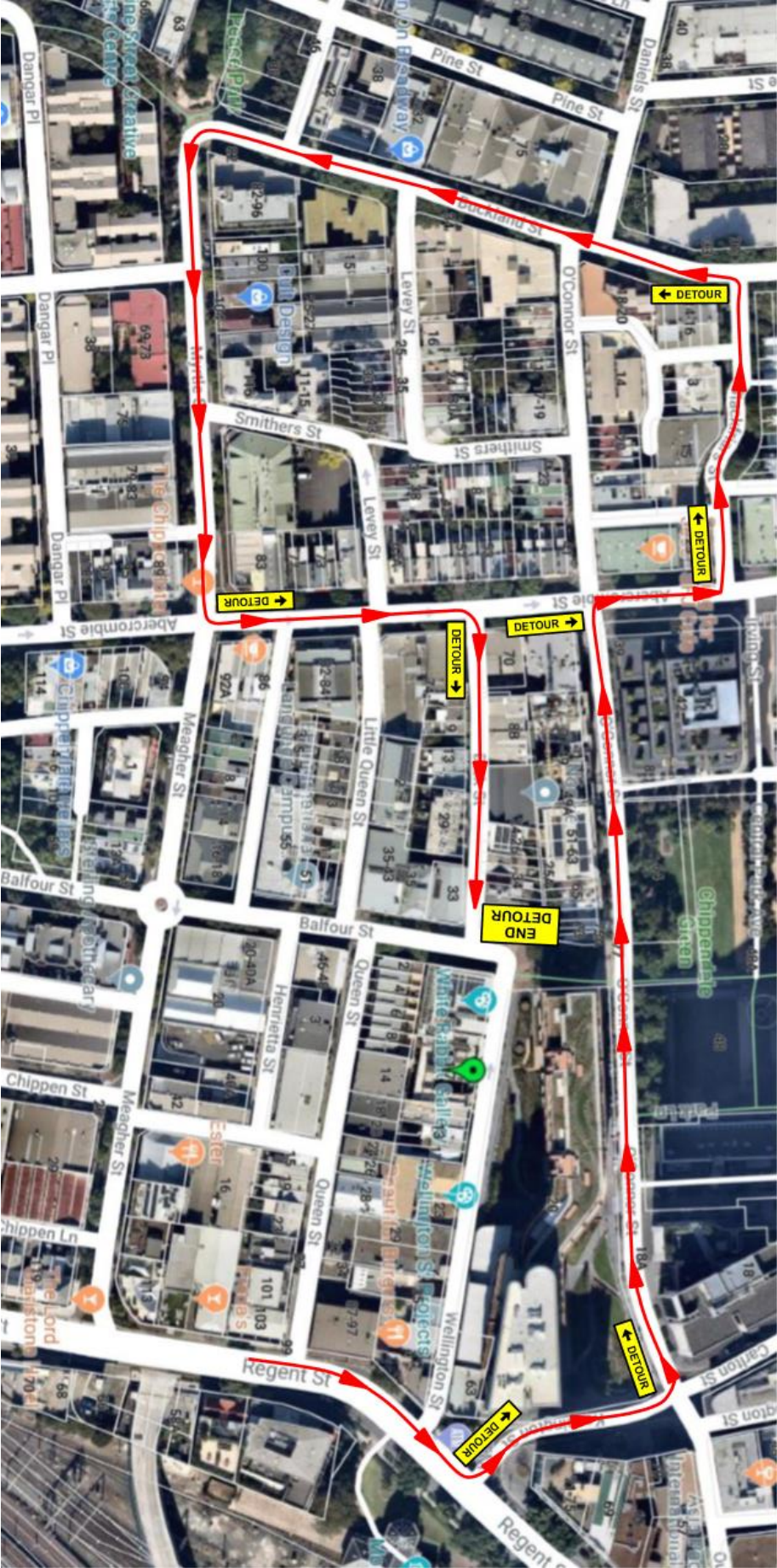


SIGNED BY CRAIG REEVES
Craig Reeves
 DATE: 07/01/2019



All advanced warning signs to be spaced as per RMS Traffic Control on Worksite Manual
 1 x Distance = Speed.

PLAN NOT TO SCALE



1-7 Wellington Street, Chippendale