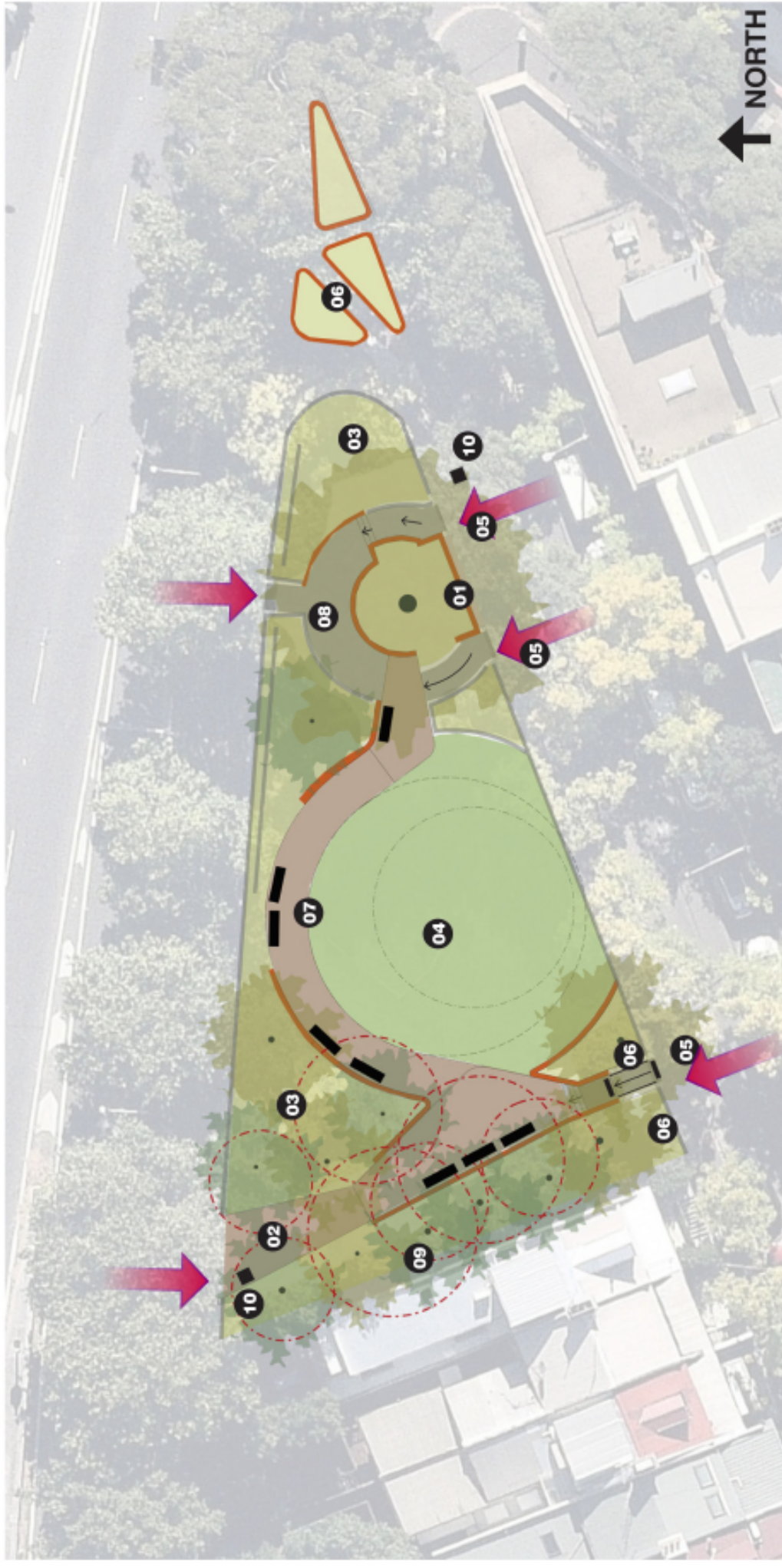


Attachment B

Consultation Concept Plan

Proposed Works



- 01** Repair brick wall on Womerah Avenue
- 02** Adjust pavement alignment to improve sightlines and accessibility from Craigend Street; including hand-rails
- 03** New robust and unified planting through out the park
- 04** Raise grass area to make more useable
- 05** Retain existing stair access
- 06** New stone edging to reduce wash-out of garden beds
- 07** New path and seats from east-west
- 08** Repair brick paving to improve accessibility to the eastern edge of the park
- 09** Remove and replace seven dying trees
- 10** Locate bins at entry/exit points

Key

- Repair Brick Paving
- New Brick Paving
- New Brick Wall/Edging
- Existing Wall/Edging retain
- Seat
- Bin
- Tree Remove
- Tree Retain
- Tree Proposed
- Proposed Grass
- Proposed Garden Bed