



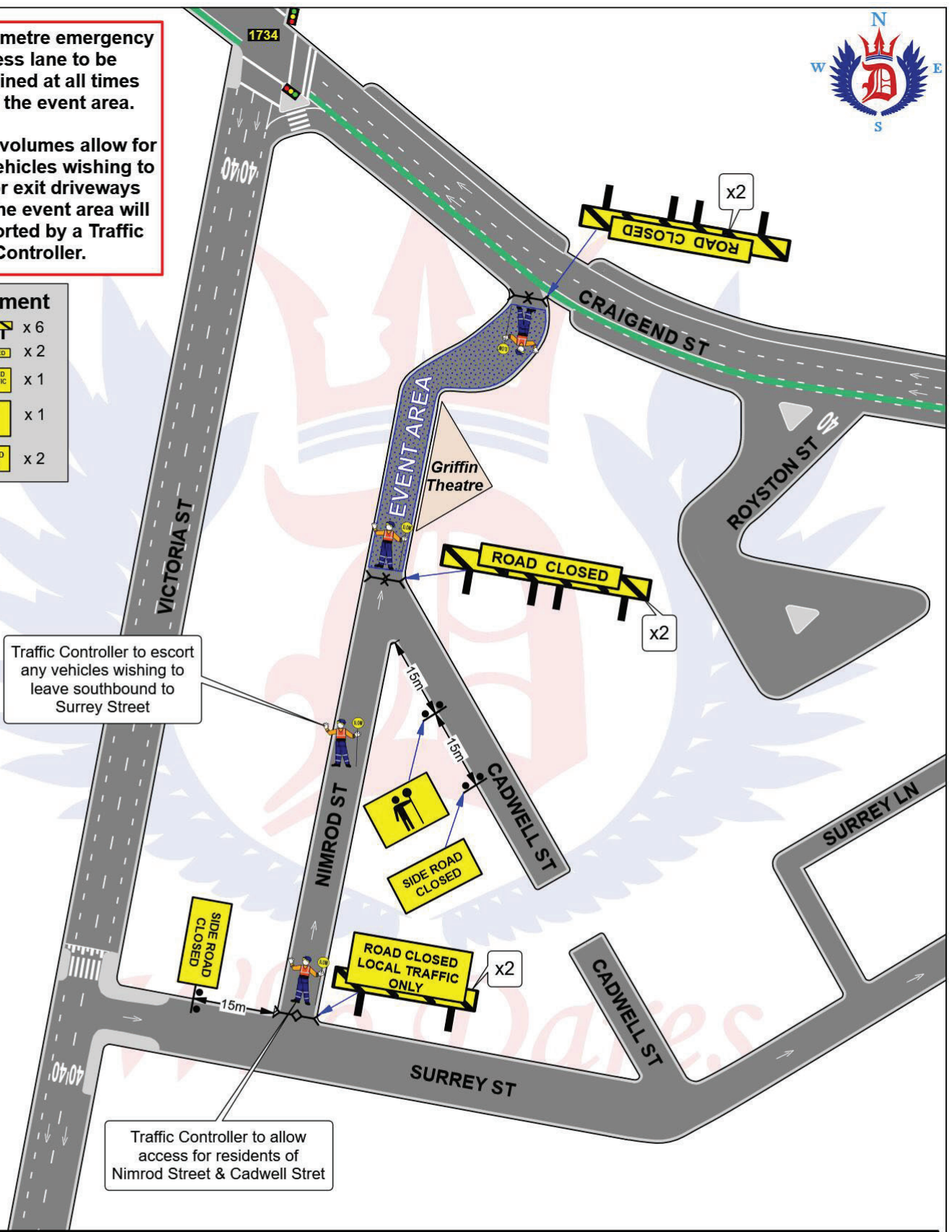
Four (4) metre emergency access lane to be maintained at all times within the event area.

If crowd volumes allow for it, any vehicles wishing to enter or exit driveways within the event area will be escorted by a Traffic Controller.

- Equipment**
- x 6
 - x 2
 - x 1
 - x 2

Traffic Controller to escort any vehicles wishing to leave southbound to Surrey Street

Traffic Controller to allow access for residents of Nimrod Street & Cadwell Street



GRIFFIN THEATRE - STREET PARTY		Nimrod Street DARLINGHURST			TCP	01
AGENCY	PRIMARY TASK	SECONDARY TASK	STAFF ON-SITE	TIME	DATE	Sun 25th Aug 2019
GRIFFIN THEATRE	Maintain Emergency Lane				Drawn by: Tim Emslie RMS Cert. 0048945001 for Who Dares Pty Ltd Signature:	
POLICE						
WHO DARES	Maintain Closures	Manage Access for Residents	5	08:00 - 18:00	<div style="background-color: #4a4a8a; color: white; padding: 5px; text-align: center;">Revised 07 Jun 19</div>	
TMC						

Who Dares Pty Ltd accepts no liability for the implementation or execution of this TCP unless undertaken by authorised Who Dares personnel.
 ALL TRAFFIC CONTROL PLANS ARE COPYRIGHT/PROPERTY OF WHO DARES PTY LTD AND ARE NOT TRANSFERABLE UNLESS AUTHORISED BY WHO DARES PTY LTD.