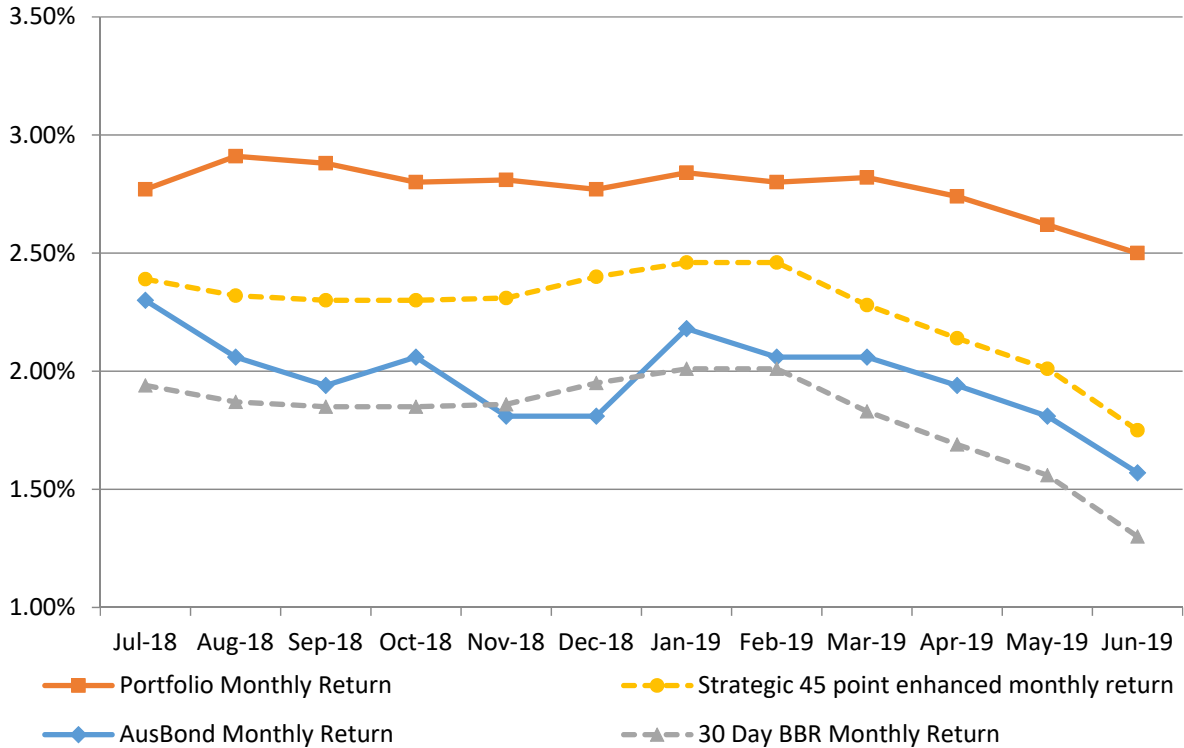


Attachment B

**Investment Performance
as at 30 June 2019**

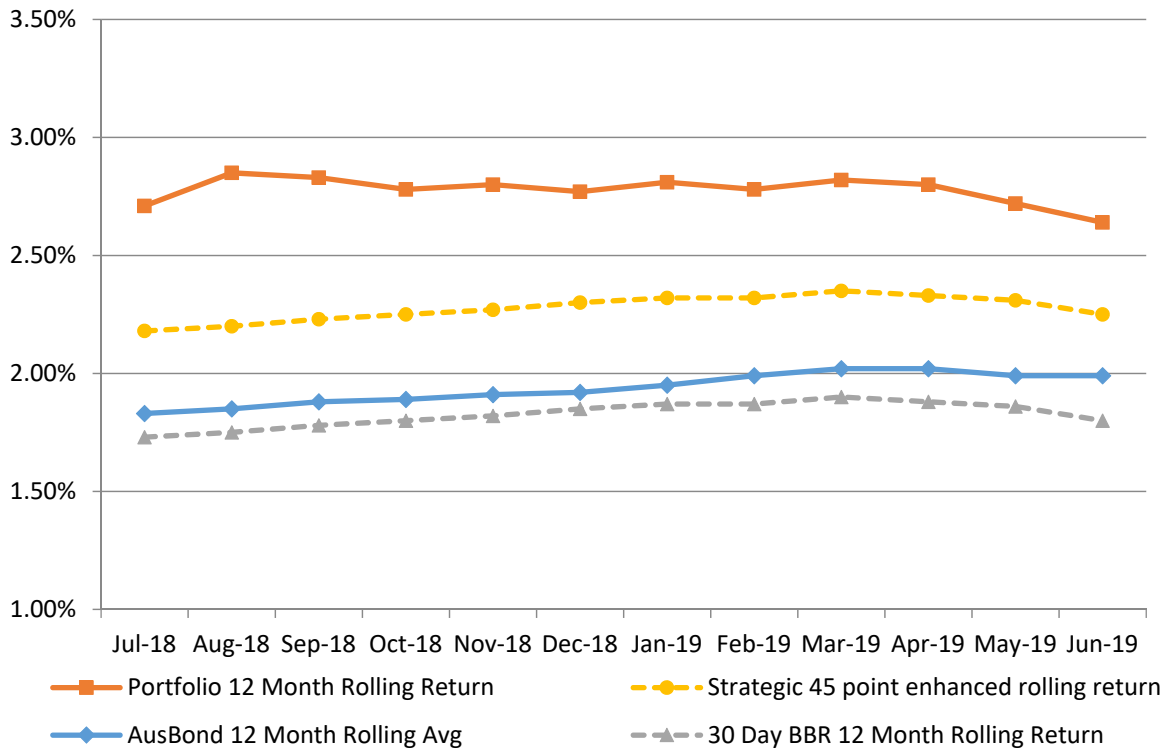
Monthly Results

**Actual Portfolio vs Strategic Enhanced Benchmark vs AusBond Benchmark vs 30 Day BBR Benchmark
June 2019**

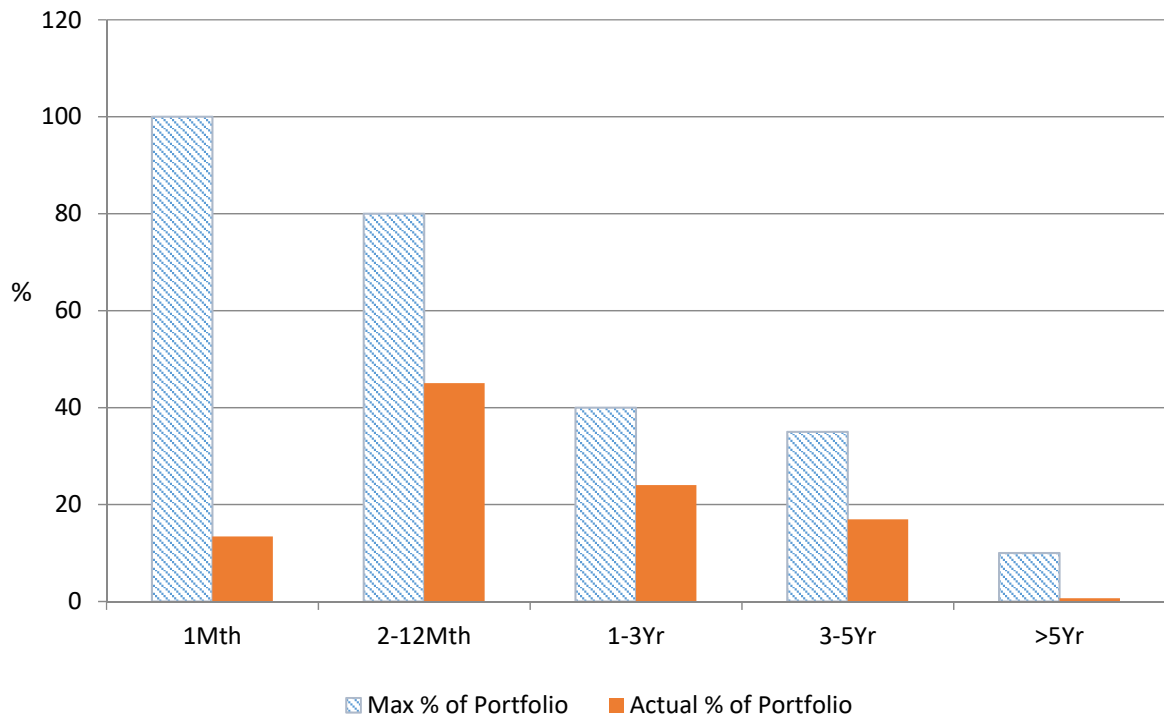


12 Month Rolling Averages

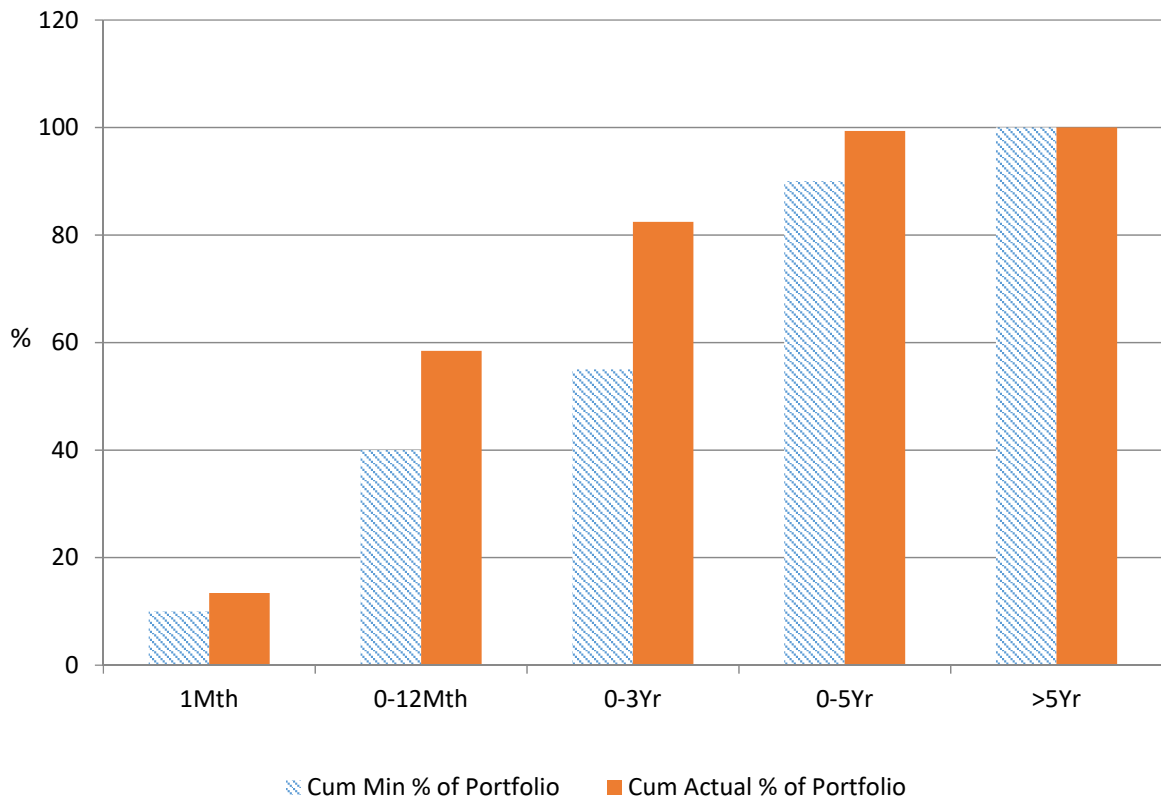
**Actual Portfolio vs Strategic Enhanced Benchmark vs AusBond Benchmark vs 30 Day BBR Benchmark
June 2019**



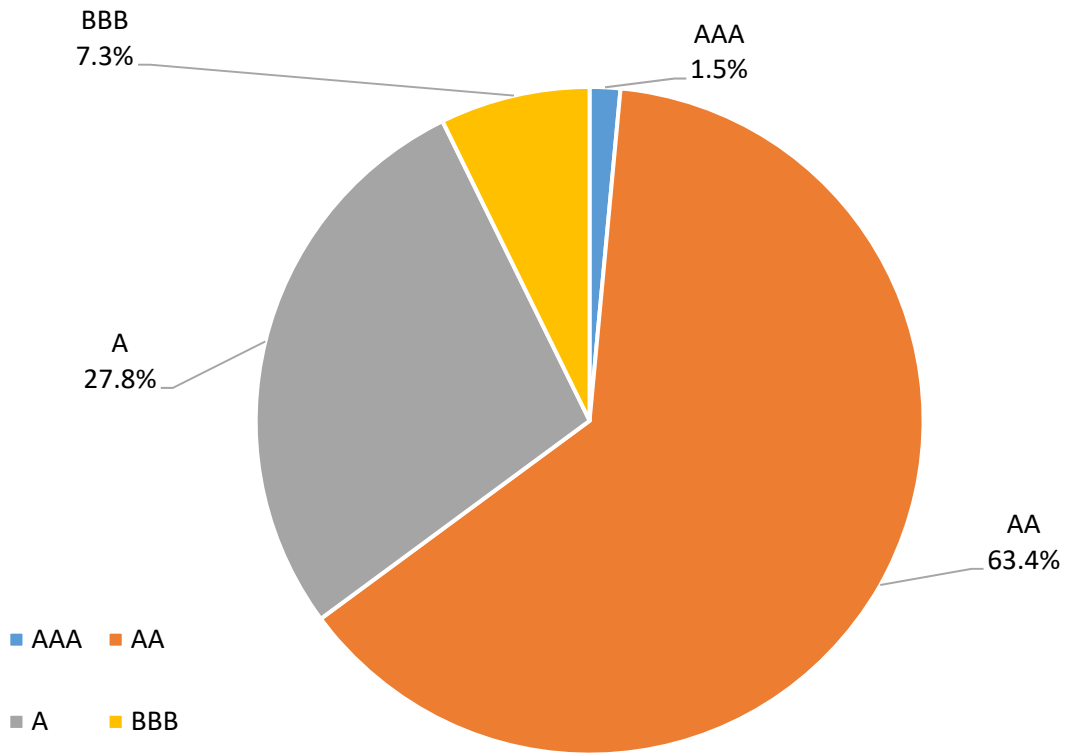
% Liquidity - Maximum Allowances as at 30 June 2019



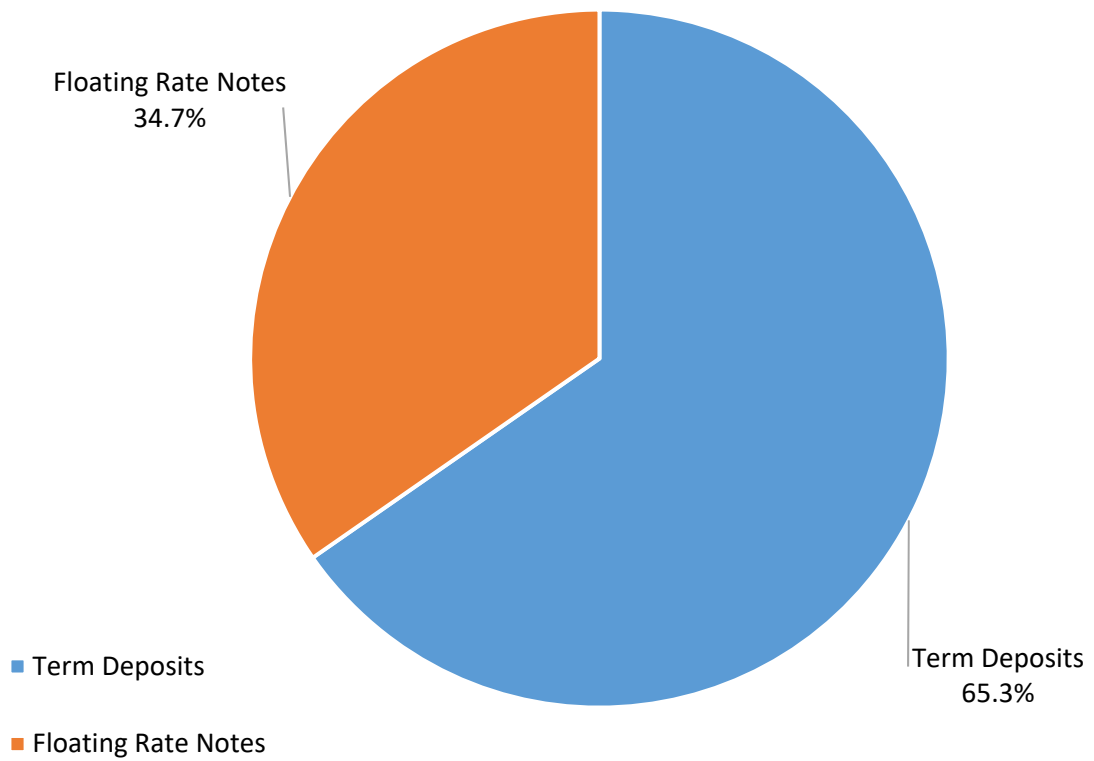
% Liquidity - Minimum Allocations as at 30 June 2019



Risk Profile as at 30 June 2019



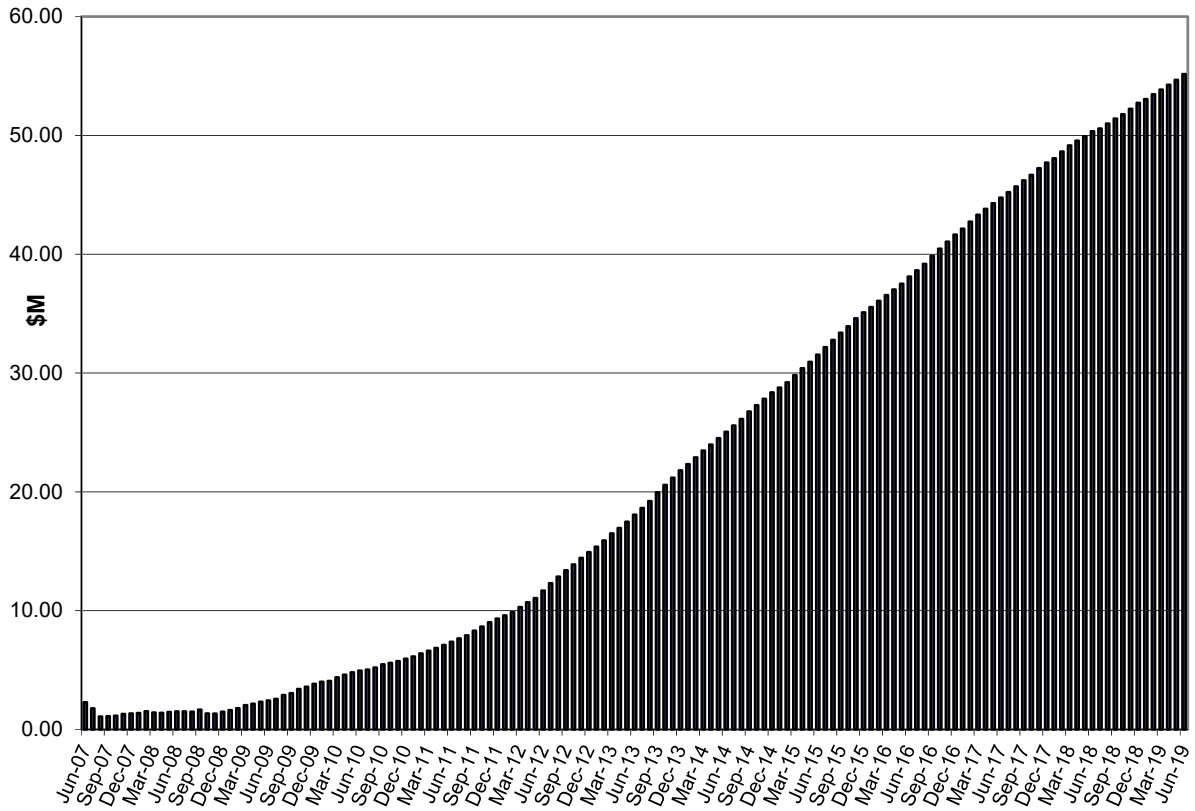
Investment Product Profile as at 30 June 2019



**Investment and cash distribution by financial institution as at
30 June 2019**

Institution Category	Financial Institution	Amount \$M	Financial Inst. %	Institution Cat. %
Australian Big 4 Bank (and related institutions)	ANZ Bank	44.0	7.2	
	Commonwealth Bank-related:	83.1	16.8	
	<i>Bankwest</i>	<i>40.0</i>	<i>8.1</i>	
	<i>Commonwealth Bank</i>	<i>43.1</i>	<i>8.6</i>	
	National Australia Bank	95.7	11.0	
	Westpac Banking Corporation	162.9	25.2	
Big 4 Total		385.7		62.1
Other Australian ADIs and Australian subsidiaries of foreign institutions	AMP Bank Ltd	10.0	1.6	
	Bank of China – Sydney	4.5	0.7	
	Bank Of Queensland	34.0	7.2	
	Bendigo and Adelaide Bank	40.0	6.5	
	CUA Limited	21.5	5.1	
	Greater Bank	5.0	0.8	
	Heritage Bank	3.5	0.6	
	IMB	5.0	0.8	
	Members Equity Bank	49.8	8.1	
	Newcastle Permanent Building Society	12.5	2.0	
	Royal Bank of Canada - Sydney	5.0	0.8	
	Suncorp Bank	45.0	5.7	
Other ADI Total		235.8		37.9
Grand Total		621.5	100.0	100.0

**Cumulative Outperformance over AusBond Benchmark
2007-2019**



**Cumulative Outperformance over 30 Day BBR Benchmark
2007-2019**

