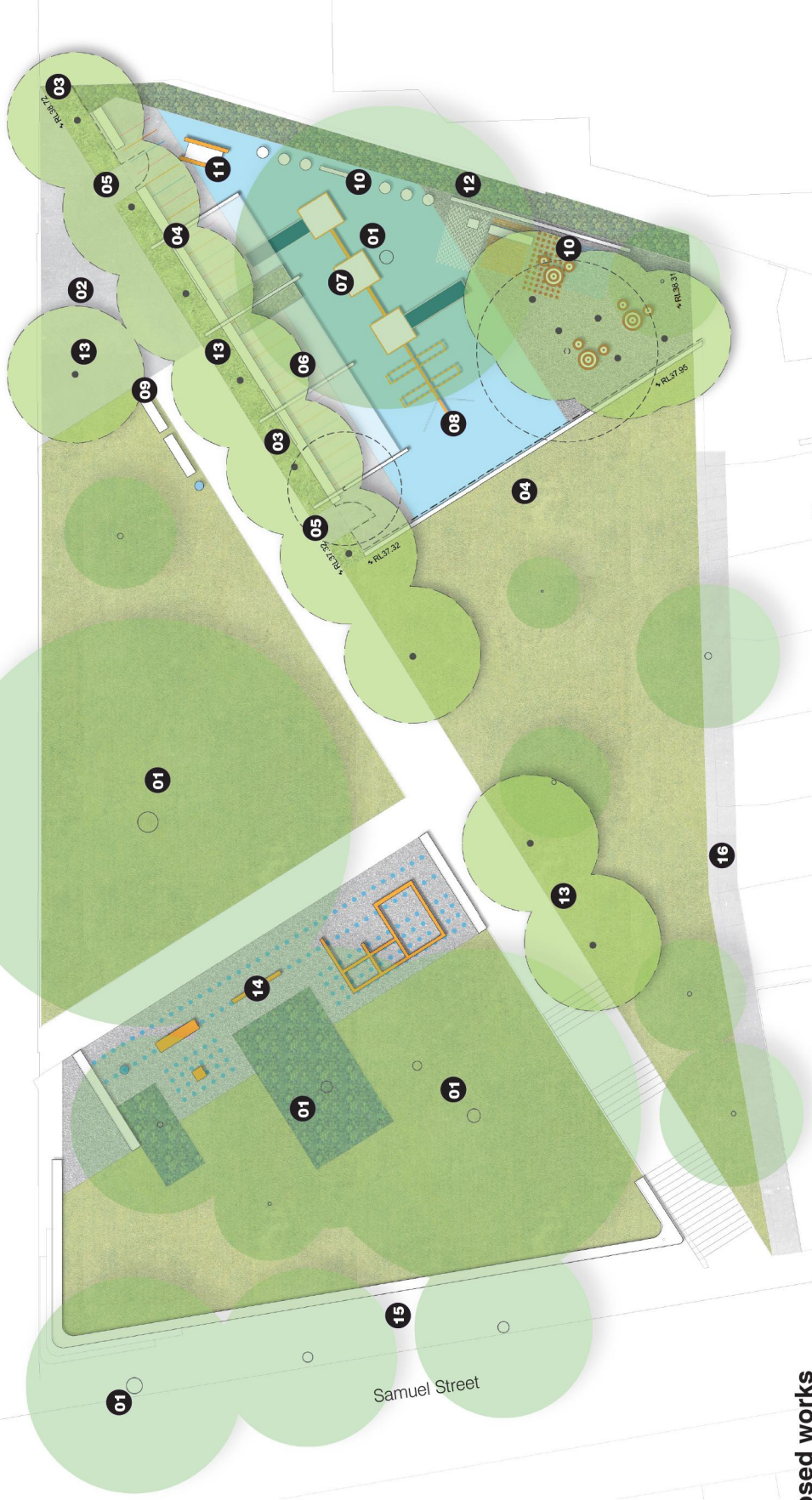


Attachment C

Consultation Concept Plan



Proposed works

- 01** Retain and protect existing trees
- 02** New paved entry forecourt to Campbell Street
- 03** New sensory planting to playground edge
- 04** New sitting wall to playground edge
- 05** New fence and gates to playground perimeter
- 06** New shade structure
- 07** New play tower with slides, cubby, climbing nets and imaginative play panels
- 08** New double swing-set
- 09** Existing bench seats to be refurbished and re-used.
- 10** New sensory and imaginative play panels including textured surfaces, social play tables and stools
- 11** New double see-saw
- 12** New buffer planting to boundary fence
- 13** New deciduous tree planting
- 14** New fitness station with upper body, lower body and balance rope equipment
- 15** Potential future works: proposed footpath widening and new retaining wall
- 16** New concrete access path

Key

- Existing trees to be retained
- Existing trees to be removed
- New trees
- New turf
- New sensory planting
- New planting
- New soft fall
- New sensory play wall
- New insitu concrete
- New permeable paving
- New sitting walls
- New balance beams and steppers
- New play tower and swing-set
- New play tables and seats
- New shade structure
- New playground perimeter fence
- New water bubbler

