

# **Attachment B**

**Draft Development Control Plan: 4-22  
Wentworth Avenue, Surry Hills**

# Draft Sydney Development Control Plan 2012

City of Sydney  
Town Hall House  
456 Kent Street  
Sydney NSW  
2000

4-22 Wentworth Avenue, Surry Hills



Sydney2030/Green/Global/Connected  
*city of villages*

CITY OF SYDNEY  

## **The purpose of this Development Control Plan**

The purpose of this plan is to amend Sydney Development Control Plan 2012 to insert site specific provisions to guide future development at 4-22 Wentworth Avenue, Surry Hills.

## **Citation**

This plan may be referred to as *Draft Sydney Development Control Plan 2012: 4-22 Wentworth Avenue, Surry Hills*.

## **Land covered by this plan**

This plan applies to land identified as 4-6, 8, 10-12, 14 and 16-22 Wentworth Avenue, Surry Hills, Lots 42, 43, 44, 45, 46, 47, 48, 49, 50, and 51, Deposited Plan 6534.

## **Relationship of this plan to Sydney Development Control Plan 2012**

This plan amends Sydney Development Control Plan 2012 in the manner set out below.

## **Amendments to Sydney Development Control Plan 2012**

This plan amends the *Sydney Development Control Plan 2012* by:

- Inserting a new section 6.3.X *4-22 Wentworth Avenue, Surry Hills*, at the end of section 6.3 – ‘Specific site controls prepared as part of a Planning Proposal’, as shown at Appendix A.
- Updating figure numbers under Section 6 of the Sydney Development Control Plan 2012 as required.

## APPENDIX A

### 6.3.X Development controls: 4-22 Wentworth Avenue, Surry Hills

The following objectives and provisions apply to the site 4-22 Wentworth Avenue, Surry Hills, as shown in Figure 6.1, where relevant site specific provisions of the Sydney Local Environmental Plan 2012 (Sydney LEP 2012) are implemented.

Clause 6.XX (new clause) of Sydney LEP 2012 enables development to exceed the height and floor space ratio shown in the height in metres and floor space ratio maps up to a prescribed amount, provided the entire site is developed for hotel or motel accommodation with ancillary commercial premises at the ground level.

All other relevant provisions in the DCP apply, except where they are inconsistent with these provisions. The provisions of this section prevail in the event of any inconsistency.

#### Objectives

- (a) Facilitate the provision of new tourist and visitor accommodation in an appropriate location.
- (b) Define the maximum building envelope to deliver a high quality built form that is of appropriate bulk and scale for its location whilst minimising amenity impacts to surrounding properties.
- (c) Conserve the group heritage item of former warehouses at 4-34 Wentworth Avenue, Surry Hills.
- (d) Ensure that new development on the site provides appropriate setbacks to maintain the integrity and prominence of the heritage item in its setting.
- (e) Ensure new development and additions are compatible with the heritage item and positively contribute to the site and surrounding streetscape.
- (f) Activate Wentworth Avenue through appropriate uses and design.
- (g) Establish benchmarks to achieve ecologically sustainable development.
- (h) Establish a design excellence strategy for a competitive design process in accordance with Sydney LEP 2012 and the City of Sydney Competitive Design Policy.

#### Provisions

The following provisions apply to 4-22 Wentworth Avenue, Surry Hills, as shown in Figure 6.1 Specific sites map.

##### 6.3.X.1 Built form

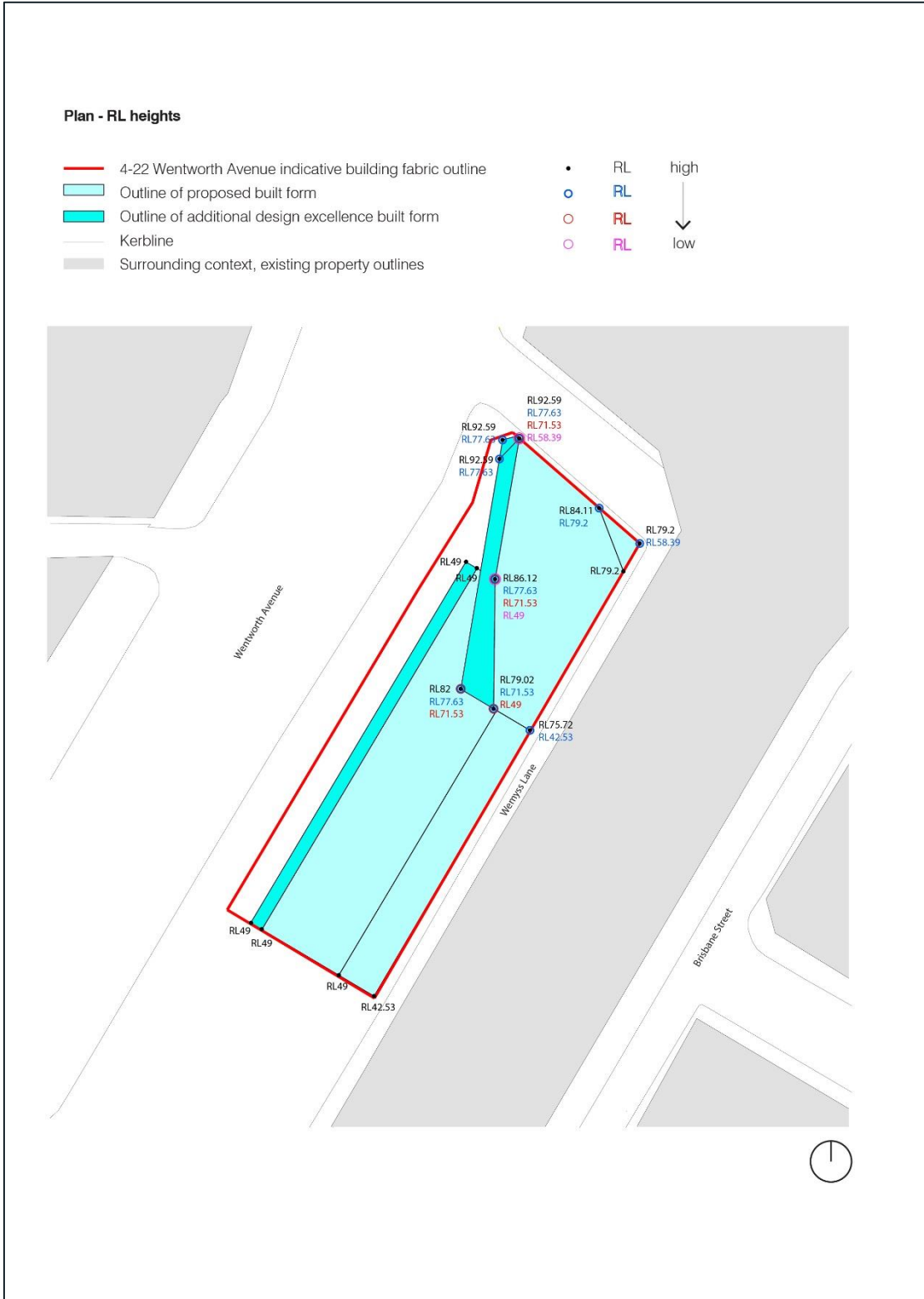
- (1) Development is not to exceed the maximum building envelope described by 'Figure 6.xxx: 4-22 Wentworth Avenue – Maximum building envelope plan', 'Figure 6.xxx: 4-22 Wentworth Avenue – Maximum building envelope – axonometric view 1' and 'Figure 6.xxx: 4-22 Wentworth Avenue – Maximum building envelope – axonometric view 2' and 'Figure 6.xxx: 4-22 Wentworth Avenue – Maximum building envelope section'.

The envelope is the maximum permissible extent of the built form and the final building design must be appropriately massed within the envelope.

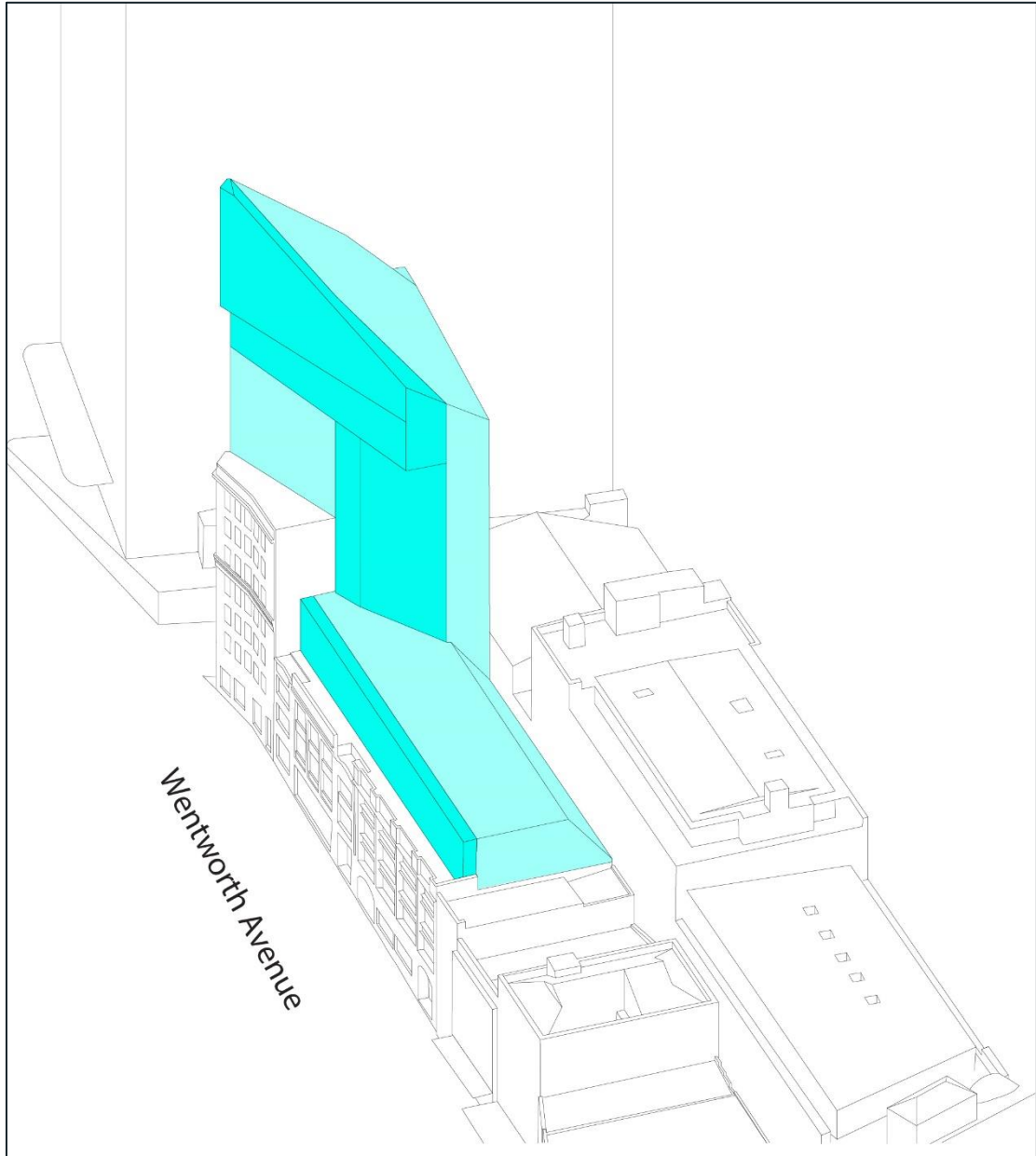
- (2) Despite 6.3.X.1 (1) above, development may only be permitted within the cantilevered portion of the tower form and a reduced setback to the rooftop podium addition (both shown in darker blue) as per 'Figure 6.xxx: 4-22

Wentworth Avenue – Maximum building envelope plan’, ‘Figure 6.xxx: 4-22 Wentworth Avenue – Maximum building envelope – axonometric view 1’ and ‘Figure 6.xxx: 4-22 Wentworth Avenue – Maximum building envelope – axonometric view 2’ and ‘Figure 6.xxx: 4-22 Wentworth Avenue – Maximum building envelope section’, provided:

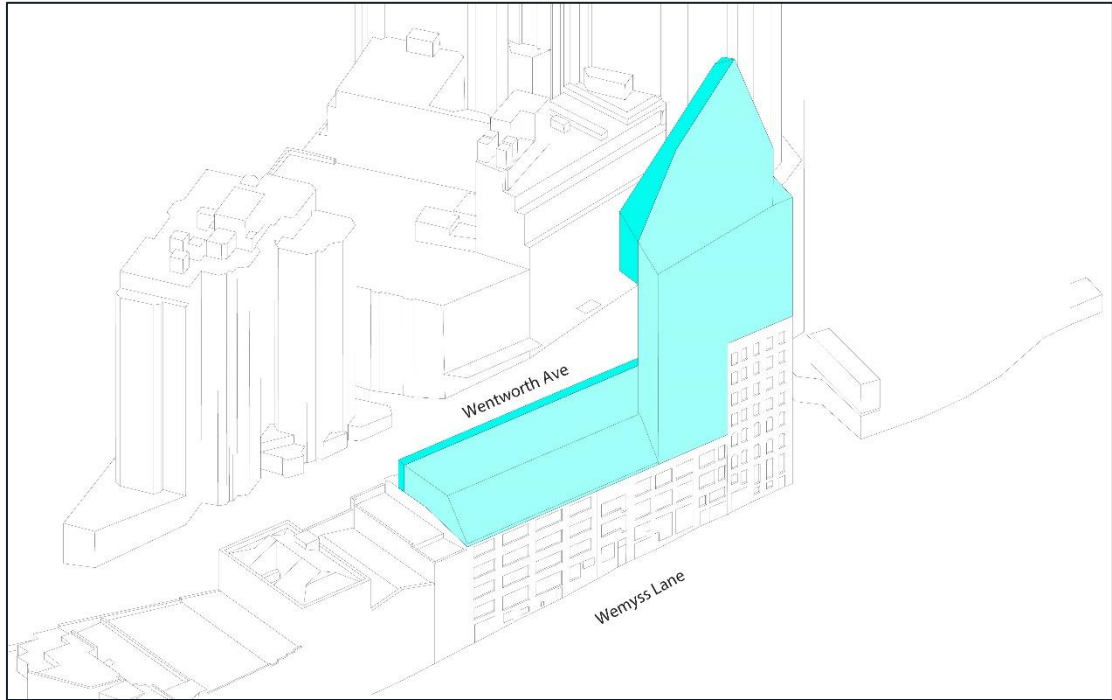
- (a) A competitive design process has been carried out for the whole site and the development is considered to achieve design excellence in accordance with Clause 6.21 of Sydney LEP 2012; and
- (b) The consent authority is satisfied that the podium addition has been designed to be minimal, lightweight and recessive.



**Figure 6xxx: 4-22 Wentworth Avenue: Maximum building envelope plan**  
**Note: design excellence shown in darker blue**

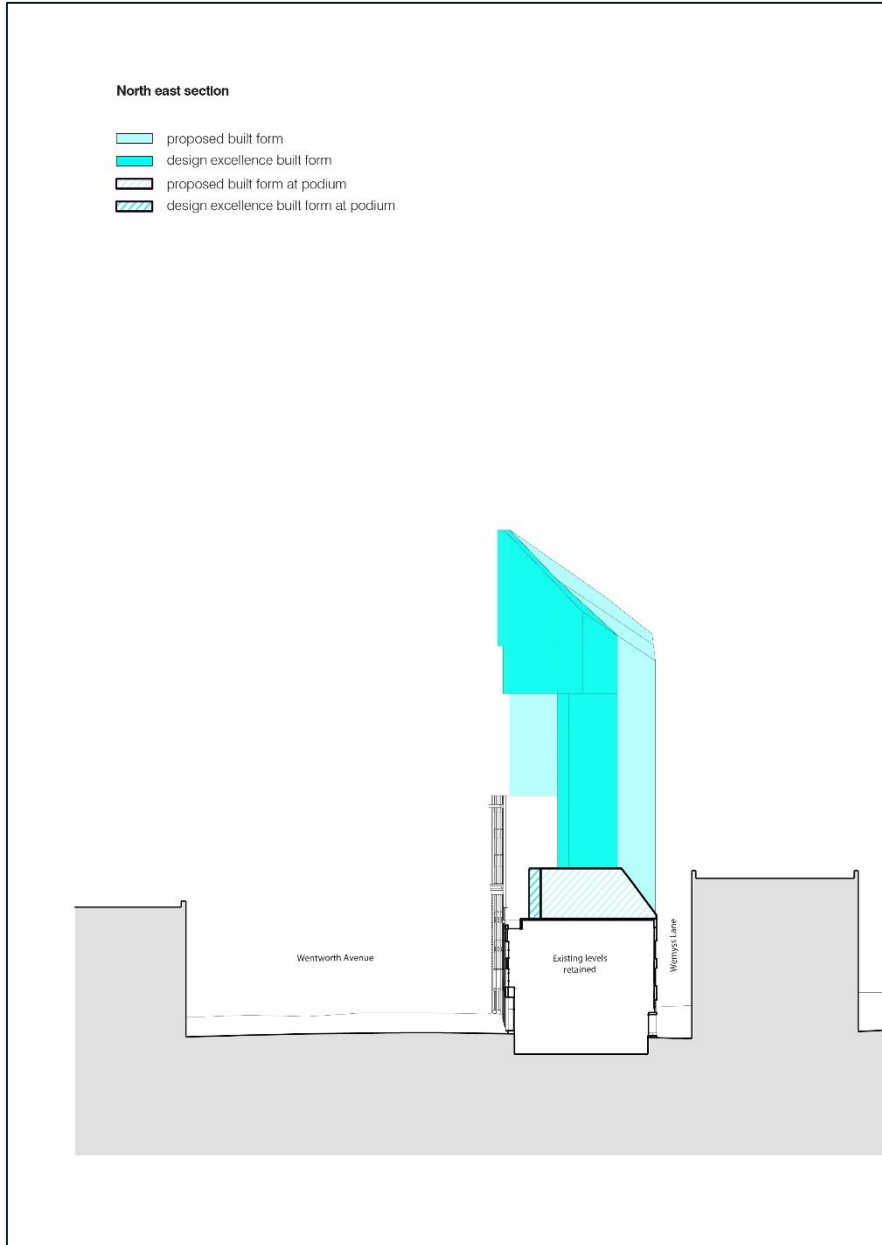


**Figure 6xxx: 4-22 Wentworth Avenue: Maximum planning envelope – axonometric view 1**  
**Note: design excellence shown in darker blue**



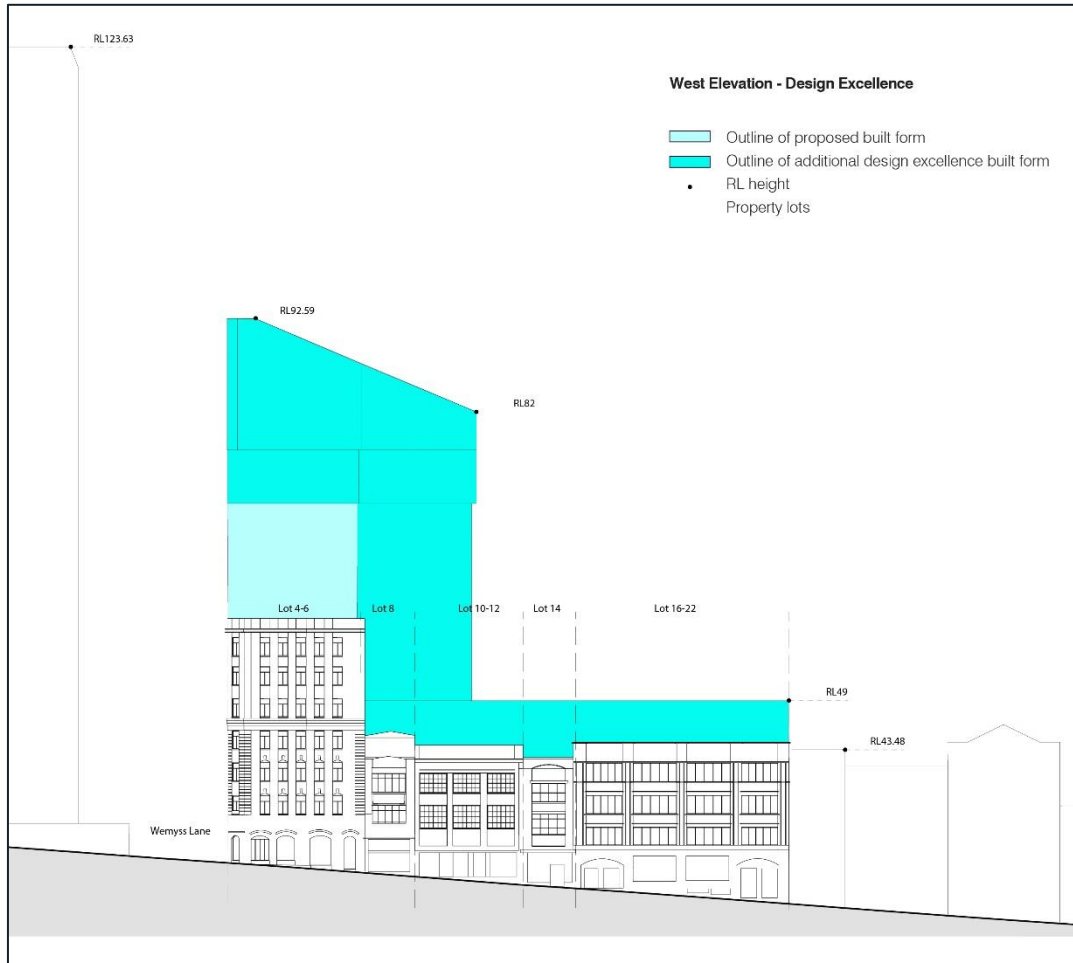
**Figure 6xxx: 4-22 Wentworth Avenue: Maximum planning envelope – axonometric view 2**  
**Note: design excellence shown in darker blue**





**Figure 6.xxx: 4-22 Wentworth Avenue – Maximum planning envelope section**

**Note: design excellence shown in darker blue**



**Figure 6.xxx: 4-22 Wentworth Avenue – Maximum street wall heights**

### **6.3.X.2 Overshadowing of neighbouring residential properties during mid-winter**

- (1) Proposed development must minimise overshadowing of neighbouring residential properties during mid-winter, including, where a nearby residential property does not currently receive a minimum of 2 hours of solar access, the proposed development must ensure existing solar access to neighbouring residential properties is not reduced by more than 20% in time.
- (2) Proposed development must not increase the number of neighbouring residential properties that receive no direct sun (less than 15 minutes).

### **6.3.X.3 Design excellence strategy**

- (1) The competitive design process is to be undertaken in accordance with clause 6.21 of Sydney LEP 2012 and is to apply to the entire site. The competitive design process is to comprise an invited competitive design alternatives process involving no less than four architectural firms ranging from emerging, emerged and established architectural firms, with demonstrated experience designing high quality heritage infill buildings.
- (2) The selection panel is to comprise a total of four (4) members. The proponent is to nominate two (2) panel members and the City of Sydney is to nominate two (2) panel members.
- (3) A building demonstrating design excellence is eligible for an amount of additional floor space in accordance with the design excellence provisions of Sydney LEP

2012. No additional height is to be awarded as a result of the competitive design process.

- (4) Any additional floor space that may be awarded in relation to any competitive process(es) as per clause 6.21(7) of Sydney LEP 2012 is to be accommodated within the proposed building envelope as shown in 'Figure 6.xxx: 4-22 Wentworth Avenue – Maximum building envelope plan', 'Figure 6.xxx: 4-22 Wentworth Avenue – Maximum building envelope – axonometric view 1' and 'Figure 6.xxx: 4-22 Wentworth Avenue – Maximum building envelope – axonometric view 2' and 'Figure 6.xxx: 4-22 Wentworth Avenue – Maximum building envelope section'.

#### **6.3.X.4 Sustainability**

- (1) The hotel development is to be designed to achieve 5 star or higher Green Star Design & As Built certification, exceeding the minimum mandatory energy and water credits, or equivalent certification.
- (2) The owner of the hotel development must execute a Commitment Agreement of 4.5 stars National Australian Built Environment Rating System (NABERS) Energy for the whole hotel building with the NSW Office of Environment.
- (3) The hotel development is to achieve 4 star NABERS water whole building rating, as evidenced by hydraulic engineer's report at detailed design stage.

#### **6.3.X.5 Heritage conservation**

- (1) Development of the site must maintain the structural and architectural integrity of the heritage item at 4-22 Wentworth Avenue, Surry Hills.
- (2) New uses and new works to the heritage item shall retain the industrial character of the buildings. New uses and works to the heritage item shall maximise retention and exposure of significant building fabric and spaces, internally and externally.
- (3) Development of the site shall include conservation works to the heritage item, such as the repair and making good of any damage to existing original fabric, reinstatement of original features including original timber windows, laneway basement windows, finishes, removal of air conditioning units from the facades, removal and replacement of later aluminium windows with timber windows and removal of all existing façade mounted plumbing and services. Exposed brick finish of the facade of no.14 Wentworth Avenue (which is currently painted) shall be reinstated.
- (4) For the heritage item, investigate and adopt alternative solutions to the Building Code of Australia performance requirements, with the aim of retaining and exposing the existing timber beams and columns and other historic features.
- (5) Locate building services for new uses, such as loading, plant rooms, fire egress and lifts, within modern fabric, new spaces or fabric of lower significance where possible, to minimise impacts on the significant fabric of the buildings.
- (6) The setback podium addition shall be designed to present as a discrete, light-weight addition with articulated southern side wall, to minimise the visual bulk of additions and presentation of a blank side wall to the public domain at 16-22 Wentworth Avenue.
- (7) A heritage interpretation strategy shall be prepared and implemented for this site as part of any development.
- (8) Development must maintain the individuality and distinction of each building, internally and externally, within the group of this heritage item, including retention

of significant floors and floor levels, interpretation of significant spaces, separate existing entries to the buildings and the party walls of the buildings. Single openings may be created within the party wall for flow of space provided they are set away from street frontages and are not highly visible from the streets.

- (9) Development must not detract from the group's distinctive streetscape presentation.
- (10) Development must be architecturally designed to respond to the individual buildings within the heritage item.
- (11) Vertical additions above heritage item must respond to and reflect the varying heights of buildings.
- (12) Alterations to building facades should be limited to maintenance, reinstating original features or removing non-significant features.
- (13) Any existing openings to the basement on the laneway shall be retained and where possible, not be amalgamated or extended.
- (14) Later non-original awnings may be removed or replaced with a sympathetic awning characteristic of the period of the building.
- (15) Significant internal and external architectural features of the original buildings should be retained, including, but not limited to, original/significant façade detailing, timber framed windows, timber joinery and internal timber structure.
- (16) Any existing exposed brickwork and stonework must not be rendered or painted.
- (17) The opening of the original loading dock of 10-12 Wentworth Avenue at the rear lane must be retained.
- (18) Existing floor levels within each building must be maintained.
- (19) New internal walls, floors and ceilings shall not be built across existing windows.

#### **6.3.X.6 Public domain and site servicing**

- (1) Existing street trees are to be retained/maintained.
- (2) Building services and vehicular access are to be consolidated and are to be located on Wemyss Lane.
- (3) A transport management plan incorporating hotel operations and servicing shall be submitted with the development application, setting out management strategies to provide for:
  - (a) Pick up and drop off on Wemyss Lane;
  - (b) Details of bus/coach parking including location and use; and
  - (c) Pedestrian safety.

#### **6.3.X.7 Awnings**

- (1) Awnings may be permitted to Wentworth Avenue but only where they considered to be appropriate for and sympathetic to the heritage significant facades of the buildings.