

# **Attachment A2**

<b>Selected Drawings</b>
--------------------------

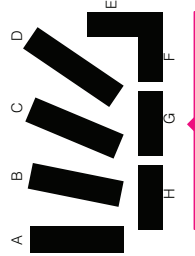


Architects	Architects	GENERAL NOTES
MINDUJ SIVASUBARULLER	1. ALL WORKS TO BE DONE IN ACCORDANCE WITH THE RELEVANT STANDARDS AND SPECIFICATIONS.	1. ALL WORKS TO BE DONE IN ACCORDANCE WITH THE RELEVANT STANDARDS AND SPECIFICATIONS.
Landscaped Architect	2. THE DESIGN SHALL BE IN ACCORDANCE WITH THE RELEVANT STANDARDS AND SPECIFICATIONS.	2. THE DESIGN SHALL BE IN ACCORDANCE WITH THE RELEVANT STANDARDS AND SPECIFICATIONS.
SUE BARRELLER DESIGN	3. THE DESIGN SHALL BE IN ACCORDANCE WITH THE RELEVANT STANDARDS AND SPECIFICATIONS.	3. THE DESIGN SHALL BE IN ACCORDANCE WITH THE RELEVANT STANDARDS AND SPECIFICATIONS.
Project Manager	4. THE DESIGN SHALL BE IN ACCORDANCE WITH THE RELEVANT STANDARDS AND SPECIFICATIONS.	4. THE DESIGN SHALL BE IN ACCORDANCE WITH THE RELEVANT STANDARDS AND SPECIFICATIONS.
JACQUEE AUSTRALIA PROJECT MANAGEMENT	5. THE DESIGN SHALL BE IN ACCORDANCE WITH THE RELEVANT STANDARDS AND SPECIFICATIONS.	5. THE DESIGN SHALL BE IN ACCORDANCE WITH THE RELEVANT STANDARDS AND SPECIFICATIONS.
Team Planner	6. THE DESIGN SHALL BE IN ACCORDANCE WITH THE RELEVANT STANDARDS AND SPECIFICATIONS.	6. THE DESIGN SHALL BE IN ACCORDANCE WITH THE RELEVANT STANDARDS AND SPECIFICATIONS.
ETHOS URBAN	7. THE DESIGN SHALL BE IN ACCORDANCE WITH THE RELEVANT STANDARDS AND SPECIFICATIONS.	7. THE DESIGN SHALL BE IN ACCORDANCE WITH THE RELEVANT STANDARDS AND SPECIFICATIONS.
Structural Engineer	8. THE DESIGN SHALL BE IN ACCORDANCE WITH THE RELEVANT STANDARDS AND SPECIFICATIONS.	8. THE DESIGN SHALL BE IN ACCORDANCE WITH THE RELEVANT STANDARDS AND SPECIFICATIONS.
STEVEN JACKMAN ENGINEERS	9. THE DESIGN SHALL BE IN ACCORDANCE WITH THE RELEVANT STANDARDS AND SPECIFICATIONS.	9. THE DESIGN SHALL BE IN ACCORDANCE WITH THE RELEVANT STANDARDS AND SPECIFICATIONS.
Acoustic Engineer	10. THE DESIGN SHALL BE IN ACCORDANCE WITH THE RELEVANT STANDARDS AND SPECIFICATIONS.	10. THE DESIGN SHALL BE IN ACCORDANCE WITH THE RELEVANT STANDARDS AND SPECIFICATIONS.
MECHANICAL, ELECTRICAL AND FIRE ENGINEERS	11. THE DESIGN SHALL BE IN ACCORDANCE WITH THE RELEVANT STANDARDS AND SPECIFICATIONS.	11. THE DESIGN SHALL BE IN ACCORDANCE WITH THE RELEVANT STANDARDS AND SPECIFICATIONS.
ADP CONSULTING	12. THE DESIGN SHALL BE IN ACCORDANCE WITH THE RELEVANT STANDARDS AND SPECIFICATIONS.	12. THE DESIGN SHALL BE IN ACCORDANCE WITH THE RELEVANT STANDARDS AND SPECIFICATIONS.
Hydraulic, Civil, Road, Stormwater	13. THE DESIGN SHALL BE IN ACCORDANCE WITH THE RELEVANT STANDARDS AND SPECIFICATIONS.	13. THE DESIGN SHALL BE IN ACCORDANCE WITH THE RELEVANT STANDARDS AND SPECIFICATIONS.
CT PARTS	14. THE DESIGN SHALL BE IN ACCORDANCE WITH THE RELEVANT STANDARDS AND SPECIFICATIONS.	14. THE DESIGN SHALL BE IN ACCORDANCE WITH THE RELEVANT STANDARDS AND SPECIFICATIONS.
RTCA & Access Consultant	15. THE DESIGN SHALL BE IN ACCORDANCE WITH THE RELEVANT STANDARDS AND SPECIFICATIONS.	15. THE DESIGN SHALL BE IN ACCORDANCE WITH THE RELEVANT STANDARDS AND SPECIFICATIONS.
SCALCOTIC	16. THE DESIGN SHALL BE IN ACCORDANCE WITH THE RELEVANT STANDARDS AND SPECIFICATIONS.	16. THE DESIGN SHALL BE IN ACCORDANCE WITH THE RELEVANT STANDARDS AND SPECIFICATIONS.
PLANNING	17. THE DESIGN SHALL BE IN ACCORDANCE WITH THE RELEVANT STANDARDS AND SPECIFICATIONS.	17. THE DESIGN SHALL BE IN ACCORDANCE WITH THE RELEVANT STANDARDS AND SPECIFICATIONS.
PLANNING	18. THE DESIGN SHALL BE IN ACCORDANCE WITH THE RELEVANT STANDARDS AND SPECIFICATIONS.	18. THE DESIGN SHALL BE IN ACCORDANCE WITH THE RELEVANT STANDARDS AND SPECIFICATIONS.

[illegible][illegible]

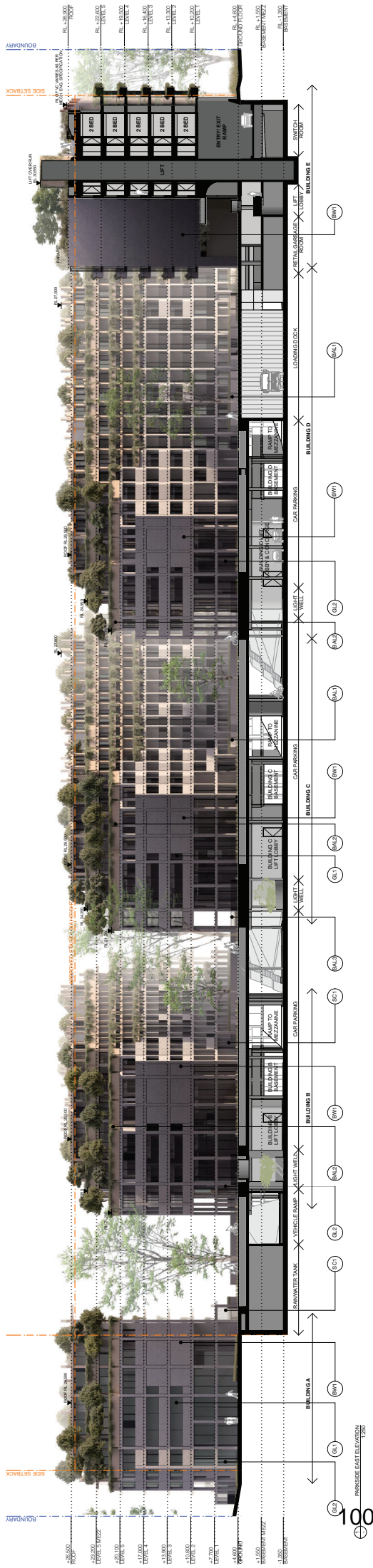
Architects	Architects	GENERAL NOTES
MINDUJ SIVASUBARULLER	1. ALL WORKS TO BE DONE IN ACCORDANCE WITH THE RELEVANT STANDARDS AND SPECIFICATIONS.	1. ALL WORKS TO BE DONE IN ACCORDANCE WITH THE RELEVANT STANDARDS AND SPECIFICATIONS.
Landscaped Architect	2. THE DESIGN SHALL BE IN ACCORDANCE WITH THE RELEVANT STANDARDS AND SPECIFICATIONS.	2. THE DESIGN SHALL BE IN ACCORDANCE WITH THE RELEVANT STANDARDS AND SPECIFICATIONS.
SUE BARRELLER DESIGN	3. THE DESIGN SHALL BE IN ACCORDANCE WITH THE RELEVANT STANDARDS AND SPECIFICATIONS.	3. THE DESIGN SHALL BE IN ACCORDANCE WITH THE RELEVANT STANDARDS AND SPECIFICATIONS.
Project Manager	4. THE DESIGN SHALL BE IN ACCORDANCE WITH THE RELEVANT STANDARDS AND SPECIFICATIONS.	4. THE DESIGN SHALL BE IN ACCORDANCE WITH THE RELEVANT STANDARDS AND SPECIFICATIONS.
JACQUEE AUSTRALIA PROJECT MANAGEMENT	5. THE DESIGN SHALL BE IN ACCORDANCE WITH THE RELEVANT STANDARDS AND SPECIFICATIONS.	5. THE DESIGN SHALL BE IN ACCORDANCE WITH THE RELEVANT STANDARDS AND SPECIFICATIONS.
Team Planner	6. THE DESIGN SHALL BE IN ACCORDANCE WITH THE RELEVANT STANDARDS AND SPECIFICATIONS.	6. THE DESIGN SHALL BE IN ACCORDANCE WITH THE RELEVANT STANDARDS AND SPECIFICATIONS.
ETHOS URBAN	7. THE DESIGN SHALL BE IN ACCORDANCE WITH THE RELEVANT STANDARDS AND SPECIFICATIONS.	7. THE DESIGN SHALL BE IN ACCORDANCE WITH THE RELEVANT STANDARDS AND SPECIFICATIONS.
Structural Engineer	8. THE DESIGN SHALL BE IN ACCORDANCE WITH THE RELEVANT STANDARDS AND SPECIFICATIONS.	8. THE DESIGN SHALL BE IN ACCORDANCE WITH THE RELEVANT STANDARDS AND SPECIFICATIONS.
STEVEN JACKMAN ENGINEERS	9. THE DESIGN SHALL BE IN ACCORDANCE WITH THE RELEVANT STANDARDS AND SPECIFICATIONS.	9. THE DESIGN SHALL BE IN ACCORDANCE WITH THE RELEVANT STANDARDS AND SPECIFICATIONS.
Acoustic Engineer	10. THE DESIGN SHALL BE IN ACCORDANCE WITH THE RELEVANT STANDARDS AND SPECIFICATIONS.	10. THE DESIGN SHALL BE IN ACCORDANCE WITH THE RELEVANT STANDARDS AND SPECIFICATIONS.
MECHANICAL, ELECTRICAL AND FIRE ENGINEERS	11. THE DESIGN SHALL BE IN ACCORDANCE WITH THE RELEVANT STANDARDS AND SPECIFICATIONS.	11. THE DESIGN SHALL BE IN ACCORDANCE WITH THE RELEVANT STANDARDS AND SPECIFICATIONS.
ADP CONSULTING	12. THE DESIGN SHALL BE IN ACCORDANCE WITH THE RELEVANT STANDARDS AND SPECIFICATIONS.	12. THE DESIGN SHALL BE IN ACCORDANCE WITH THE RELEVANT STANDARDS AND SPECIFICATIONS.
Hydraulic, Civil, Road, Stormwater	13. THE DESIGN SHALL BE IN ACCORDANCE WITH THE RELEVANT STANDARDS AND SPECIFICATIONS.	13. THE DESIGN SHALL BE IN ACCORDANCE WITH THE RELEVANT STANDARDS AND SPECIFICATIONS.
CT PARTS	14. THE DESIGN SHALL BE IN ACCORDANCE WITH THE RELEVANT STANDARDS AND SPECIFICATIONS.	14. THE DESIGN SHALL BE IN ACCORDANCE WITH THE RELEVANT STANDARDS AND SPECIFICATIONS.
RTCA & Access Consultant	15. THE DESIGN SHALL BE IN ACCORDANCE WITH THE RELEVANT STANDARDS AND SPECIFICATIONS.	15. THE DESIGN SHALL BE IN ACCORDANCE WITH THE RELEVANT STANDARDS AND SPECIFICATIONS.
SCALCOTIC	16. THE DESIGN SHALL BE IN ACCORDANCE WITH THE RELEVANT STANDARDS AND SPECIFICATIONS.	16. THE DESIGN SHALL BE IN ACCORDANCE WITH THE RELEVANT STANDARDS AND SPECIFICATIONS.
PLANNING	17. THE DESIGN SHALL BE IN ACCORDANCE WITH THE RELEVANT STANDARDS AND SPECIFICATIONS.	17. THE DESIGN SHALL BE IN ACCORDANCE WITH THE RELEVANT STANDARDS AND SPECIFICATIONS.
PLANNING	18. THE DESIGN SHALL BE IN ACCORDANCE WITH THE RELEVANT STANDARDS AND SPECIFICATIONS.	18. THE DESIGN SHALL BE IN ACCORDANCE WITH THE RELEVANT STANDARDS AND SPECIFICATIONS.

FOR APPROVAL	Drawn: <b>James Pugh Pty Ltd</b> 20 Macquarie Avenue Sydney NSW 2000 Sydney Australia Bryan Mervenson - 1839 4488 4807	Reviewed: <b>ONE SYDNEY PARK</b>  Drawing Name	Date: 15/11/19	Scale: 1:250	Sheet: A1
	Client: <b>Hauling Property Group Australia</b> T: +61 (0)2 9301 1111 mha@hauling.com www.hauling.com.au © Hauling Design Urban 2019	Drawn: <b>MINDIU + SF</b> O/A	Reviewed: <b>B</b>		



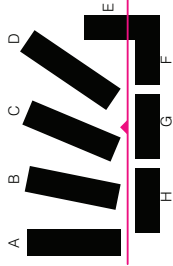






**Legend :**External Materials and Finishes

- [illegible]



**MHNDUNION**  
**SILVESTERSTASIS**

I, the undersigned, hereby agree to indemnify and hold the Architect, Engineer, Designer, Planner, and/or Consultant harmless from and against all claims, damages, losses, and expenses, including reasonable attorneys' fees, that may be asserted against or incurred by the Architect, Engineer, Designer, Planner, and/or Consultant in connection with the performance of its professional services under this Agreement, whether or not such claims, damages, losses, and expenses result in whole or in part from the negligence of the Architect, Engineer, Designer, Planner, and/or Consultant. This obligation shall survive the termination or expiration of this Agreement.

Architects	MANOJ SALVETER FULLER Landscape Architect
Project Manager	SUE BARNSLEY DESIGN
Architectural Services	JAQUETTE AUSTRALIA PROJECT MANAGEMENT
Team Planner	TONY TURNER
ETHS URBAN	WOOD & GRIFFIN ENGINEERS
Acoustic, Mechanical, Electrical and Fire Engineers	AUT CONSULTING
Hydraulic, Civil, Road, Stormwater	CJ ARMS
PLCA & Access Consultant	WILLIE COOPER
Water Conservation	PITT & SHERRY

## GENERAL NOTES

1. ALL WORKS TO BE IN ACCORDANCE WITH THE BUILDING CODE OF AUSTRALIA, THE LOCAL AUTHORITY'S REQUIREMENTS AND THE LOCAL AUTHORITY'S LOCAL AUTHORITY.
2. DO NOT SCALE OF THE DRAWING. ALL DIMENSIONS ON SITE PRIOR TO COMMENCING WORK.
3. CONTRACTOR TO VERIFY ALL DIMENSIONS ON SITE PRIOR TO COMMENCING WORK.
4. ARCHITECTURAL DRAWINGS BY WHOM AND SUSTAINABLE TO BE READ IN CONNECTION WITH ALL CONTRACT DOCUMENTS AND ALL CONSULTANTS' DIMENSIONAL NOTICES, ON THE NEED FOR CLARIFICATION, PRIOR TO COMMENCING WORK.
5. CONTRACTOR TO ENSURE CONSISTENCY BETWEEN DRAWINGS IS MAINTAINED TO MAINTAIN.
6. SETTING OUT PRIOR TO CONSTRUCTION.
7. CONTRACTOR TO REVIEW ALL CONTRACTORS' DETAIL DRAWINGS.
8. PROCEED WITH WORK AFTER REVIEWED ANNOTATED DRAWINGS FOLLOWING EXPLANATION OF ANY DISCREPANCIES BY AN ANTICIPATED PRIOR CONTRACTOR.
9. PROCEED WITH WORK AFTER REVIEWED ANNOTATED DRAWINGS FOLLOWING EXPLANATION OF ANY DISCREPANCIES BY AN ANTICIPATED PRIOR CONTRACTOR.

Rev	Date	Description
A	19/07/20 18	DA SUBMISSION
B	15/11/20 19	DA SUBMISSION

**FOR APPROVAL**

<p><b>Project</b></p> <p><b>ONE SYDNEY PARK</b></p> <p><b>MINIUD + SF</b></p> <p><b>MINIUD + SF</b></p>	<p><b>Owner</b></p> <p><b>Shawyer + Gray Pty Ltd</b></p> <p>11 Little Hedges Sydney NSW 2010</p> <p><b>Architect</b></p> <p><b>Shawyer + Gray</b></p> <p>11 Little Hedges Sydney NSW 2010</p> <p><b>Structural Engineer</b></p> <p><b>Urban Movement - NSW ABH 3088</b></p> <p>Part 9 6/161 - NSW ABH 3088 Jill Swaine - NSW ABH 3087</p>	<p><b>Designing Architects</b></p> <p><b>Shawyer + Gray Pty Ltd</b></p> <p>11 Little Hedges Sydney NSW 2010</p> <p><b>Designing Engineers</b></p> <p><b>Urban Movement - NSW ABH 3088</b></p> <p>Part 9 6/161 - NSW ABH 3088 Jill Swaine - NSW ABH 3087</p>	<p><b>Elevations - SITE</b></p> <p><b>EAST - PARKSIDE</b></p> <p><b>Drawing Name</b></p> <p>T 411 002 5900 1122 mobile 0411 002 5900 © Shawyer + Gray 2019</p>	<p><b>DA #</b></p> <p><b>DA - A 3003</b></p> <p><b>Refraction</b></p> <p><b>B</b></p>
---	---	---	--	---



BAL3	Baustade Type 1: Colour range: Light to mid greys	BWL	Brickwork Colour range: Dark grey
BAL2	Baustade Type 2: Coloured concrete Colour: Refer image on A2000	BWL	Brickwork Colour range: Dark grey
BAL3	Baustade Type 3: Coloured concrete Colour: Dark grey	BWL	Brickwork Colour range: Dark grey
BAL4	Baustade Type 4: Semi-frameless clear glass Frame colour: Dark grey	BWL	Brickwork Colour range: Dark grey

In accepting and utilizing this document the recipient agrees that Sweater Fuller Pty. Ltd. ACN 327 430 719 and M&M Design Union Pty. Ltd. ACN 023 171 082, retain all common law, statutory law and other rights including copyright and intellectual property rights. The recipient agrees not to use this document for any purpose other than its intended use to waive all claims against Sweater Fuller and M&M Design Union resulting from unauthorised changes, or to reuse the document on other projects without the prior written consent of Sweater Fuller and M&M Design Union. Under no circumstances shall transfer of this document be deemed a sale. Sweater Fuller and M&M Design Union makes no warranties or fitness for any purpose. M&M Design Union commencing. Use fig used dimensions only. Do not scale drawings. Use fig used dimensions prior to any work.

GENERAL NOTES	Authors
1. ALL WORKS TO BE COMPLETED BY THE END OF 2015.	MARINO SILVESTER FALLER
2. CONTRACTOR TO PROVIDE ALL MATERIALS AND LABOUR.	LANDSCAPE ARCHITECT
3. CONTRACTOR TO PROVIDE ALL MATERIALS AND LABOUR.	SCIENCE BARNLEY DESIGN
4. CONTRACTOR TO PROVIDE ALL MATERIALS AND LABOUR.	PROJECT MANAGER
5. CONTRACTOR TO PROVIDE ALL MATERIALS AND LABOUR.	LOUCEL AUSTRALIA PROJECT MANAGEMENT
6. CONTRACTOR TO PROVIDE ALL MATERIALS AND LABOUR.	Team Planner
7. CONTRACTOR TO PROVIDE ALL MATERIALS AND LABOUR.	ETIQUIS URBAN
8. CONTRACTOR TO PROVIDE ALL MATERIALS AND LABOUR.	Structural Engineer
9. CONTRACTOR TO PROVIDE ALL MATERIALS AND LABOUR.	Acoustic Engineer
10. CONTRACTOR TO PROVIDE ALL MATERIALS AND LABOUR.	Architectural Engineer
11. CONTRACTOR TO PROVIDE ALL MATERIALS AND LABOUR.	Hydraulic, Civil, Road, Stormwater
12. CONTRACTOR TO PROVIDE ALL MATERIALS AND LABOUR.	ADP CONSULTING
13. CONTRACTOR TO PROVIDE ALL MATERIALS AND LABOUR.	Hydraulic, Civil, Road, Stormwater
14. CONTRACTOR TO PROVIDE ALL MATERIALS AND LABOUR.	CJ PERNS
15. CONTRACTOR TO PROVIDE ALL MATERIALS AND LABOUR.	BICA Access Consultant
16. CONTRACTOR TO PROVIDE ALL MATERIALS AND LABOUR.	SCALOGIC
17. CONTRACTOR TO PROVIDE ALL MATERIALS AND LABOUR.	ENVIRONMENTAL
18. CONTRACTOR TO PROVIDE ALL MATERIALS AND LABOUR.	ENVIRONMENTAL

1. ALL WORKS TO BE IN ACCORDANCE WITH THE BUILDING CODE OF AUSTRALIA, THE NATIONAL FIRE PROTECTION ASSOCIATION (NFPA) AND ALL LOCAL AUTHORITY REQUIREMENTS INCLUDING ANY NOTED COMMENTS.
2. DO NOT SCALE OFF THIS DRAWING. ONLY USE DIMENSIONS PROVIDED.
3. CONTRACTOR TO VERIFY ALL DIMENSIONS ON SITE PRIOR TO COMMENCING WORK.
4. ALL CONSTRUCTION SHALL BE IN ACCORDANCE WITH AUSTRALIAN STANDARDS AND AS NOTED ON THIS DRAWING.
5. CONTRACTOR TO NOTIFY MAINFIND AND SLEETER FOR ALL DIMENSIONS, DIMENSIONAL TOLERANCES AND ANY REQUIRED COMPLICATION PRIOR TO MANUFACTURE.
6. MAINFIND AND SLEETER SHALL BE RESPONSIBLE TO IDENTIFY ALL CONTRACTORS TO BEAILED DRAWINGS.
7. PROCEEDURE WORK TO BE VERIFIED AGAINST DRAWINGS FOLLOWING ERECTION.
8. CONTRACTOR TO NOTIFY MAINFIND AND SLEETER FOR ALL DIMENSIONS PRIOR TO CONTRACTOR PROCEEDING WITH NEXT ITEM.

Rev	Date	Description
A	19/07/20 18	DA SUBMISSION
B	15/11/20 19	DA SUBMISSION

<b>Client</b>	Level Design Property Group Australia Level 3, 205 Euston Road, Alexandria NSW 2015, Australia
<b>Design Authors</b>	<p><b>MVN Design Union Pty Ltd</b> 101/100 Pitt St, Sydney NSW 2000 Sydney Australia Brian Mayerson - NSW A/B8 4007</p> <p><b>Silverstar Fuller Pty Ltd</b> 101/100 Pitt St, Sydney NSW 2000 Sydney Australia Penny Fuller - NSW A/B8 7889 Jared Switeler - NSW A/B8 8007</p> <p>T +61 (0)2 9000 1122 mvalles@level.com.au © MVN Design Union 2019</p>

Project	ONE SYDNEY PARK
Drawing Name	ELEVATIONS - SITE WEST - PARKSIDE
Drawing #	DA - A 3004

**Hallang Property Group Australia**  
Level 3, 205 Euston Road, Alexandria NSW 2015, Australia

DA - A 3004 B

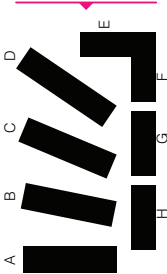
Legend: External Materials and Finishes

- BAL1 Balustrade Type 1: Colour range: Light to mid greys
- BAL2 Balustrade Type 2: Coloured concrete Colour: Refer image on A8000
- BAL3 Metal panels: powdercoat finish Colour: Dark grey
- BAL4 Balustrade Type 4: Frame colour: Dark grey

- BLK1 Brickwork Colour range: Light to mid greys
- CL1 Cladding Type 1: Solid metal cladding system Colour: Dark grey
- CL2 Cladding Type 2: Solid metal cladding system Colour: Copper
- CON1 Coloured concrete Colour: Refer image on A8000
- CON2 Recast concrete Colour: Refer image on A 9000

- GL1 Glass Type 1: Relate glazing, clear, to meet Basix and acoustic report requirements Framing system: aluminium, powder coat finish Framing colour: Dark grey
- GL2 Glass Type 2: Relate glazing, clear, to meet Section J and acoustic report requirements Framing system: aluminium, powder coat finish Framing colour: Dark grey
- GL3 Glass Type 3: Fixed wire mesh for planning Refer image on A8000
- GL4 Glass Type 4: Glazing, clear, to suit Basix and acoustic report requirements Framing system: aluminium, powder coat finish Framing colour: Dark grey

- SC1 Screen Type 1: Relate screen, clear, to meet Basix and acoustic report requirements Colour: Dark grey
- SC2 Screen Type 2: Relate screen, clear, to meet Section J and acoustic report requirements Colour: Refer image on A8000
- SC3 Screen Type 3: Fixed wire mesh for planning Refer image on A8000



FOR APPROVAL				Scale	Sheet 3/20
Date	15/11/19	Scale	1:250	AT	
Drawn	MINDU + SF	Chk.	MINDU + SF		
Project					
ONE SYDNEY PARK					
Drawing Name					
ELEVATIONS - SITE NORTH					
Drawing #					
DA - A 3005					

Architects		SILVESTER FULLER	
Landscape and Architect		SUE BARNESLEY DESIGN	
Project Manager		JACQUEL AUSTRALIA PROJECT MANAGEMENT	
Town Planner		ETHOS URBAN	
Structural Engineer		WILLIAMSON ENGINEERS	
Acoustic, Mechanical, Electrical and Fire Engineers		ZOP CONSULTING	
Hydraulic, Civil, Road, Stormwater		SCAPEWORKS	
Ecological		ECOLOGIX	
Pitt & Sherry		PITT & SHERRY	

GENERAL NOTES

1. ALL DIMENSIONS ARE TO FACE UNLESS OTHERWISE STATED. THE BUILDING CODE OF AUSTRALIA (AS/NZS 1170:2009) IS TO BE USED FOR ALL DIMENSIONS. DIMENSIONS TO FACE ARE TO BE USED FOR ALL DIMENSIONS. DIMENSIONS TO FACE ARE TO BE USED FOR ALL DIMENSIONS.
2. CONTRACTOR TO VERIFY ALL DIMENSIONS ON SITE PRIOR TO COMMENCING WORK.
3. CONTRACTOR TO VERIFY ALL DIMENSIONS ON SITE PRIOR TO COMMENCING WORK.
4. CONTRACTOR TO VERIFY ALL DIMENSIONS ON SITE PRIOR TO COMMENCING WORK.
5. CONTRACTOR TO VERIFY ALL DIMENSIONS ON SITE PRIOR TO COMMENCING WORK.
6. CONTRACTOR TO VERIFY ALL DIMENSIONS ON SITE PRIOR TO COMMENCING WORK.
7. CONTRACTOR TO VERIFY ALL DIMENSIONS ON SITE PRIOR TO COMMENCING WORK.
8. CONTRACTOR TO VERIFY ALL DIMENSIONS ON SITE PRIOR TO COMMENCING WORK.
9. CONTRACTOR TO VERIFY ALL DIMENSIONS ON SITE PRIOR TO COMMENCING WORK.
10. CONTRACTOR TO VERIFY ALL DIMENSIONS ON SITE PRIOR TO COMMENCING WORK.





- GENERAL NOTES**
1. ALL WORKS TO BE DONE IN ACCORDANCE WITH THE BUILDING CODES OF AUSTRALIA, AUSTRALIAN STANDARDS, AUSTRALIAN STANDARDS FOR CONSTRUCTION, AND ALL STATE AND LOCAL AUTHORITY REGULATIONS AND ORDINANCES.
  2. DO NOT SCALE OFF THIS DRAWING. ONLY "USE DIMENSIONS PROVIDED."
  3. CONTRACTOR TO VERIFY ALL DIMENSIONS ON SITE PRIOR TO COMMENCING WORK.
  4. ALL ARCHITECTURAL DRAWINGS BY MANDU AND SLISTER ALLER TO BE READ IN CONJUNCTION WITH THE CONTRACT DOCUMENTS AND THE SCHEDULE OF WORK.
  5. CONTRACTOR TO INFORM MANDU AND SLISTER ALLER OF ANY DISCREPANCIES, DIMENSIONAL INCONSISTENCIES, OR THE NEED FOR CLARIFICATION PRIOR TO COMMENCEMENT OF WORK.
  6. CONTRACTOR TO MAINTAIN CONSISTENCY BETWEEN MATERIALS MAINTAINED ON DRAWING AND MATERIALS USED ON SITE.
  7. MANDU AND SLISTER ALLER TO REVIEW ALL CONTRACTORS BEFORE DEDICATING SETTING OFF WORK TO CONSTRUCTION.
  8. CONTRACTOR TO OBTAIN ALL NECESSARY PERMITS PRIOR TO COMMENCING WORK AND ASKED TO BE NOTIFIED OF ANY DISCREPANCIES PRIOR TO CONSTRUCTION.

Rev	Date	Description
A	19/07/20 18	DA SUBMISSION
B	15/11/20 19	DA SUBMISSION

<b>Drawing Authors</b>	<b>MIN Design Unit Pty Ltd</b> 35 Piccadilly Avenue Sydney NSW 2010 Sydney Australia Brian Mayerson - NSW AIBB 4007	<b>Shaver &amp; Fuller Pty Ltd</b> 12 Lills Rwy St Sydney NSW 2010 Sydney Australia Perry Fuller - NSW AIBB 7889 Joc Slevater - NSW AIBB 8027	<b>Client</b>
	T 61 (02) 911 9111 www.min-design.com @min_design © MHD Design Unit 2019	T 61 (02) 0000 1122 www.shaverfuller.com @shaverfuller © Shaver & Fuller 2019	<b>Halling Property Group Australia</b> Level 3, 326 Easton Alexandria NSW 2015 Australia

