

Attachment C3

Selected Drawings

I, the undersigned, being a duly qualified Architect, hereby certify that I am the author of the design and drawings hereon, and that I am not aware of any other person claiming to be the author of the same. I further certify that the design and drawings hereon are true and correct copies of the original designs and drawings, and that I have not made any alterations or additions thereto, except as shown by the revision notes hereon. I am not aware of any other person claiming to be the author of the same. I further certify that the design and drawings hereon are true and correct copies of the original designs and drawings, and that I have not made any alterations or additions thereto, except as shown by the revision notes hereon.

Notwithstanding to whomsoever the design and drawings hereon may come, they shall remain the property of the undersigned, and shall not be used for any other purpose without the written consent of the undersigned. The undersigned shall be responsible for the design and drawings hereon, and shall not be liable for any loss or damage caused by the use of the same.

Notwithstanding to whomsoever the design and drawings hereon may come, they shall remain the property of the undersigned, and shall not be used for any other purpose without the written consent of the undersigned. The undersigned shall be responsible for the design and drawings hereon, and shall not be liable for any loss or damage caused by the use of the same.

FOR APPROVAL

Rev	Date	Revision	By	CHK.
1	24.06.2019	ISSUED FOR INFORMATION	BR	NH
2	26.06.2019	ISSUED FOR CA	BR	NH
3	02.07.2019	ISSUED FOR CA	BR	NH
4	02.07.2019	ISSUED FOR CA	BR	NH
5	02.07.2019	ISSUED FOR CA	BR	NH
6	28.07.2019	FINAL ISSUE FOR CA	BR	NH
7	17.03.2020	ISSUE FOR CONSTRUCTION	NH	ND

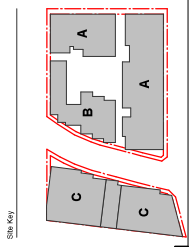
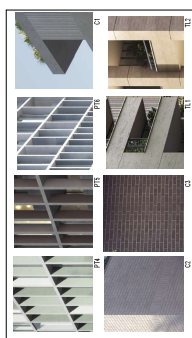
Notwithstanding to whomsoever the design and drawings hereon may come, they shall remain the property of the undersigned, and shall not be used for any other purpose without the written consent of the undersigned. The undersigned shall be responsible for the design and drawings hereon, and shall not be liable for any loss or damage caused by the use of the same.



East Elevation

MATERIALS LEGEND

- PAINT
 - W1 WHITE PAINT
 - P22 DARK GREY PAINT
 - P23 LIGHT GREY PAINT
 - P24 GREEN TONE PAINT
 - P25 BROWN TONE PAINT
 - P26 SILVER GREY PAINT
- CONCRETE
 - C1 LIGHT GREY CONCRETE
 - C2 DARK GREY CONCRETE
 - C3 DARK TONE BRICK
 - T1E GREY TRAPEZOID
 - T1Z WARM TRAPEZOID
- GLASS
 - G1 CLEAR GLASS
 - G2 BLACK GLASS
 - G3 CLEAR GLASS
 - G4 CLEAR GLASS
 - G5 CLEAR GLASS
 - G6 CLEAR GLASS
 - G7 CLEAR GLASS
 - G8 CLEAR GLASS
 - G9 CLEAR GLASS
 - G10 CLEAR GLASS
 - G11 CLEAR GLASS
 - G12 CLEAR GLASS
 - G13 CLEAR GLASS
 - G14 CLEAR GLASS
 - G15 CLEAR GLASS
 - G16 CLEAR GLASS
 - G17 CLEAR GLASS
 - G18 CLEAR GLASS
 - G19 CLEAR GLASS
 - G20 CLEAR GLASS
 - G21 CLEAR GLASS
 - G22 CLEAR GLASS
 - G23 CLEAR GLASS
 - G24 CLEAR GLASS
 - G25 CLEAR GLASS
 - G26 CLEAR GLASS
 - G27 CLEAR GLASS
 - G28 CLEAR GLASS
 - G29 CLEAR GLASS
 - G30 CLEAR GLASS
 - G31 CLEAR GLASS
 - G32 CLEAR GLASS
 - G33 CLEAR GLASS
 - G34 CLEAR GLASS
 - G35 CLEAR GLASS
 - G36 CLEAR GLASS
 - G37 CLEAR GLASS
 - G38 CLEAR GLASS
 - G39 CLEAR GLASS
 - G40 CLEAR GLASS
 - G41 CLEAR GLASS
 - G42 CLEAR GLASS
 - G43 CLEAR GLASS
 - G44 CLEAR GLASS
 - G45 CLEAR GLASS
 - G46 CLEAR GLASS
 - G47 CLEAR GLASS
 - G48 CLEAR GLASS
 - G49 CLEAR GLASS
 - G50 CLEAR GLASS
 - G51 CLEAR GLASS
 - G52 CLEAR GLASS
 - G53 CLEAR GLASS
 - G54 CLEAR GLASS
 - G55 CLEAR GLASS
 - G56 CLEAR GLASS
 - G57 CLEAR GLASS
 - G58 CLEAR GLASS
 - G59 CLEAR GLASS
 - G60 CLEAR GLASS
 - G61 CLEAR GLASS
 - G62 CLEAR GLASS
 - G63 CLEAR GLASS
 - G64 CLEAR GLASS
 - G65 CLEAR GLASS
 - G66 CLEAR GLASS
 - G67 CLEAR GLASS
 - G68 CLEAR GLASS
 - G69 CLEAR GLASS
 - G70 CLEAR GLASS
 - G71 CLEAR GLASS
 - G72 CLEAR GLASS
 - G73 CLEAR GLASS
 - G74 CLEAR GLASS
 - G75 CLEAR GLASS
 - G76 CLEAR GLASS
 - G77 CLEAR GLASS
 - G78 CLEAR GLASS
 - G79 CLEAR GLASS
 - G80 CLEAR GLASS
 - G81 CLEAR GLASS
 - G82 CLEAR GLASS
 - G83 CLEAR GLASS
 - G84 CLEAR GLASS
 - G85 CLEAR GLASS
 - G86 CLEAR GLASS
 - G87 CLEAR GLASS
 - G88 CLEAR GLASS
 - G89 CLEAR GLASS
 - G90 CLEAR GLASS
 - G91 CLEAR GLASS
 - G92 CLEAR GLASS
 - G93 CLEAR GLASS
 - G94 CLEAR GLASS
 - G95 CLEAR GLASS
 - G96 CLEAR GLASS
 - G97 CLEAR GLASS
 - G98 CLEAR GLASS
 - G99 CLEAR GLASS
 - G100 CLEAR GLASS
- SCREENS
 - S1 SCREEN
 - S2 SCREEN
 - S3 SCREEN
 - S4 SCREEN
 - S5 SCREEN
 - S6 SCREEN
 - S7 SCREEN
 - S8 SCREEN
 - S9 SCREEN
 - S10 SCREEN
 - S11 SCREEN
 - S12 SCREEN
 - S13 SCREEN
 - S14 SCREEN
 - S15 SCREEN
 - S16 SCREEN
 - S17 SCREEN
 - S18 SCREEN
 - S19 SCREEN
 - S20 SCREEN
 - S21 SCREEN
 - S22 SCREEN
 - S23 SCREEN
 - S24 SCREEN
 - S25 SCREEN
 - S26 SCREEN
 - S27 SCREEN
 - S28 SCREEN
 - S29 SCREEN
 - S30 SCREEN
 - S31 SCREEN
 - S32 SCREEN
 - S33 SCREEN
 - S34 SCREEN
 - S35 SCREEN
 - S36 SCREEN
 - S37 SCREEN
 - S38 SCREEN
 - S39 SCREEN
 - S40 SCREEN
 - S41 SCREEN
 - S42 SCREEN
 - S43 SCREEN
 - S44 SCREEN
 - S45 SCREEN
 - S46 SCREEN
 - S47 SCREEN
 - S48 SCREEN
 - S49 SCREEN
 - S50 SCREEN
 - S51 SCREEN
 - S52 SCREEN
 - S53 SCREEN
 - S54 SCREEN
 - S55 SCREEN
 - S56 SCREEN
 - S57 SCREEN
 - S58 SCREEN
 - S59 SCREEN
 - S60 SCREEN
 - S61 SCREEN
 - S62 SCREEN
 - S63 SCREEN
 - S64 SCREEN
 - S65 SCREEN
 - S66 SCREEN
 - S67 SCREEN
 - S68 SCREEN
 - S69 SCREEN
 - S70 SCREEN
 - S71 SCREEN
 - S72 SCREEN
 - S73 SCREEN
 - S74 SCREEN
 - S75 SCREEN
 - S76 SCREEN
 - S77 SCREEN
 - S78 SCREEN
 - S79 SCREEN
 - S80 SCREEN
 - S81 SCREEN
 - S82 SCREEN
 - S83 SCREEN
 - S84 SCREEN
 - S85 SCREEN
 - S86 SCREEN
 - S87 SCREEN
 - S88 SCREEN
 - S89 SCREEN
 - S90 SCREEN
 - S91 SCREEN
 - S92 SCREEN
 - S93 SCREEN
 - S94 SCREEN
 - S95 SCREEN
 - S96 SCREEN
 - S97 SCREEN
 - S98 SCREEN
 - S99 SCREEN
 - S100 SCREEN
- GLAZING
 - G1 GLAZING
 - G2 GLAZING
 - G3 GLAZING
 - G4 GLAZING
 - G5 GLAZING
 - G6 GLAZING
 - G7 GLAZING
 - G8 GLAZING
 - G9 GLAZING
 - G10 GLAZING
 - G11 GLAZING
 - G12 GLAZING
 - G13 GLAZING
 - G14 GLAZING
 - G15 GLAZING
 - G16 GLAZING
 - G17 GLAZING
 - G18 GLAZING
 - G19 GLAZING
 - G20 GLAZING
 - G21 GLAZING
 - G22 GLAZING
 - G23 GLAZING
 - G24 GLAZING
 - G25 GLAZING
 - G26 GLAZING
 - G27 GLAZING
 - G28 GLAZING
 - G29 GLAZING
 - G30 GLAZING
 - G31 GLAZING
 - G32 GLAZING
 - G33 GLAZING
 - G34 GLAZING
 - G35 GLAZING
 - G36 GLAZING
 - G37 GLAZING
 - G38 GLAZING
 - G39 GLAZING
 - G40 GLAZING
 - G41 GLAZING
 - G42 GLAZING
 - G43 GLAZING
 - G44 GLAZING
 - G45 GLAZING
 - G46 GLAZING
 - G47 GLAZING
 - G48 GLAZING
 - G49 GLAZING
 - G50 GLAZING
 - G51 GLAZING
 - G52 GLAZING
 - G53 GLAZING
 - G54 GLAZING
 - G55 GLAZING
 - G56 GLAZING
 - G57 GLAZING
 - G58 GLAZING
 - G59 GLAZING
 - G60 GLAZING
 - G61 GLAZING
 - G62 GLAZING
 - G63 GLAZING
 - G64 GLAZING
 - G65 GLAZING
 - G66 GLAZING
 - G67 GLAZING
 - G68 GLAZING
 - G69 GLAZING
 - G70 GLAZING
 - G71 GLAZING
 - G72 GLAZING
 - G73 GLAZING
 - G74 GLAZING
 - G75 GLAZING
 - G76 GLAZING
 - G77 GLAZING
 - G78 GLAZING
 - G79 GLAZING
 - G80 GLAZING
 - G81 GLAZING
 - G82 GLAZING
 - G83 GLAZING
 - G84 GLAZING
 - G85 GLAZING
 - G86 GLAZING
 - G87 GLAZING
 - G88 GLAZING
 - G89 GLAZING
 - G90 GLAZING
 - G91 GLAZING
 - G92 GLAZING
 - G93 GLAZING
 - G94 GLAZING
 - G95 GLAZING
 - G96 GLAZING
 - G97 GLAZING
 - G98 GLAZING
 - G99 GLAZING
 - G100 GLAZING



Project
Epsom Rd
94 - 104 Epsom Road, Zelland

Drawing Name
Elevations

Date	Scale	Sheet Size
17.03.2020	1 : 200	@ A1
Drawn	CHK.	
BR	NH	
Sub No.	Drawing No.	Revision
5997	DA-0502	1 / 7



FOR APPROVAL

Rev	Date	Revision	By	Chk.
1	25.06.2019	ISSUED FOR INFORMATION	BR	NH
2	26.06.2019	ISSUED FOR DA	BR	NH
3	03.07.2019	ISSUED FOR DA	BR	NH
4	22.07.2019	ISSUED FOR DA	BR	NH
5	26.07.2019	FINAL ISSUE FOR DA	BR	NH
6	17.01.2020	ISSUE FOR COORDINATION	BR	ND

Nominated Architects: Adam Haddow+7188 | John Pradel-7004



West Elevation

MATERIALS LEGEND

[illegible]

Job No. **5997** Drawing No. **DA-0504 / 6** Revision

SJB Architects
Level 2
490 Crown Street
Sunny Hills NSW
2010 Australia
T 61 2 9380 9911
F 61 2 9380 9922
www.sjb.com.au

FOR APPROVAL

Rev	Date	Revision	By	Chk.
1	25.06.2019	ISSUED FOR INFORMATION	BR	NH
2	26.06.2019	ISSUED FOR DA	BR	NH
3	03.07.2019	ISSUED FOR DA	BR	NH
4	22.07.2019	ISSUED FOR DA	BR	NH
5	26.07.2019	FINAL ISSUE FOR DA	BR	NH
6	17.08.2020	FINAL ISSUE FOR COORDINATION	BR	ND

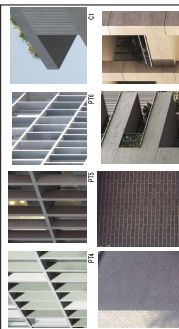
Nominated Architects: Adam Haddow+7188 | John Pradel-7004



North Elevation - Building C

MATERIALS LEGEND	
PANIT	GLAZING
P1	Q1
P2	Q2
P3	Q3
P4	Q4
P5	Q5
P6	Q6
P7	Q7
P8	Q8
P9	Q9
P10	Q10
P11	Q11
P12	Q12
P13	Q13
P14	Q14
P15	Q15
P16	Q16
P17	Q17
P18	Q18
P19	Q19
P20	Q20
P21	Q21
P22	Q22
P23	Q23
P24	Q24
P25	Q25
P26	Q26
P27	Q27
P28	Q28
P29	Q29
P30	Q30
P31	Q31
P32	Q32
P33	Q33
P34	Q34
P35	Q35
P36	Q36
P37	Q37
P38	Q38
P39	Q39
P40	Q40
P41	Q41
P42	Q42
P43	Q43
P44	Q44
P45	Q45
P46	Q46
P47	Q47
P48	Q48
P49	Q49
P50	Q50
P51	Q51
P52	Q52
P53	Q53
P54	Q54
P55	Q55
P56	Q56
P57	Q57
P58	Q58
P59	Q59
P60	Q60
P61	Q61
P62	Q62
P63	Q63
P64	Q64
P65	Q65
P66	Q66
P67	Q67
P68	Q68
P69	Q69
P70	Q70
P71	Q71
P72	Q72
P73	Q73
P74	Q74
P75	Q75
P76	Q76
P77	Q77
P78	Q78
P79	Q79
P80	Q80
P81	Q81
P82	Q82
P83	Q83
P84	Q84
P85	Q85
P86	Q86
P87	Q87
P88	Q88
P89	Q89
P90	Q90
P91	Q91
P92	Q92
P93	Q93
P94	Q94
P95	Q95
P96	Q96
P97	Q97
P98	Q98
P99	Q99
P100	Q100

MATERIALS LEGEND



Drawing Name

Elevations

Date	Scale	Sheet Size
17.03.2020	1 : 200	@ A1

Drawn _____ Chik.

Job No.	Drawing No.	Revision
---------	-------------	----------

5997 DA-0506 / 6

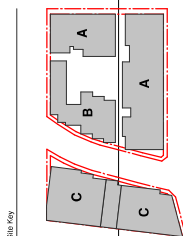


Nominated Architects: Adam Haddock-7188 | John Pradell-7004

Rev	Date	Revision	By	Chk.
1	25.06.2019	ISSUED FOR INFORMATION	BR	NH
2	26.06.2019	ISSUED FOR DA	BR	NH
3	03.07.2019	ISSUED FOR DA	BR	NH
4	02.07.2019	ISSUED FOR DA	BR	NH
5	26.07.2019	FINAL ISSUE FOR DA	BR	NH
6	17.03.2020	ISSUE FOR COORDINATION	BR	ND

Rev	Date	Revision	By	Chk.
1	25.06.2019	ISSUED FOR INFORMATION	BR	NH
2	26.06.2019	ISSUED FOR DA	BR	NH
3	03.07.2019	ISSUED FOR DA	BR	NH
4	02.07.2019	ISSUED FOR DA	BR	NH
5	26.07.2019	FINAL ISSUE FOR DA	BR	NH
6	17.03.2020	ISSUE FOR COORDINATION	BR	ND

Nominated Architects: Adam Haddock-7188 | John Pradell-7004



MERITON

Epsom Rd
94 - 104 Epsom Road, Zetland

Drawing Name _____

Date	Scale	Sheet Size
17.03.2020	1 : 200	@ A1
Drawn	Chk.	
BR	NH	
Job No.	Drawing No.	Revision
5997	DA-0601	/ 6

SJB Architects
Level 12
490 Crown Street
Surry Hills NSW
2010 Australia
T 61 2 9380 9911
F 61 2 9380 9922
www.sjb.com.au



MATERIALS LEGEND	
ANT	WHITE PAINT
GLN	DARK GREY PAINT
GL2	BLACK GLASS
GL3	GLASS GLASS
GL4	GLASS PAINT
GL5	GLASS PAINT
GL6	GLASS PAINT
GL7	GLASS PAINT
GL8	GLASS PAINT
GL9	GLASS PAINT
GL10	GLASS PAINT
GL11	GLASS PAINT
GL12	GLASS PAINT
GL13	GLASS PAINT
GL14	GLASS PAINT
GL15	GLASS PAINT
GL16	GLASS PAINT
GL17	GLASS PAINT
GL18	GLASS PAINT
GL19	GLASS PAINT
GL20	GLASS PAINT
GL21	GLASS PAINT
GL22	GLASS PAINT
GL23	GLASS PAINT
GL24	GLASS PAINT
GL25	GLASS PAINT
GL26	GLASS PAINT
GL27	GLASS PAINT
GL28	GLASS PAINT
GL29	GLASS PAINT
GL30	GLASS PAINT
GL31	GLASS PAINT
GL32	GLASS PAINT
GL33	GLASS PAINT
GL34	GLASS PAINT
GL35	GLASS PAINT
GL36	GLASS PAINT
GL37	GLASS PAINT
GL38	GLASS PAINT
GL39	GLASS PAINT
GL40	GLASS PAINT
GL41	GLASS PAINT
GL42	GLASS PAINT
GL43	GLASS PAINT
GL44	GLASS PAINT
GL45	GLASS PAINT
GL46	GLASS PAINT
GL47	GLASS PAINT
GL48	GLASS PAINT
GL49	GLASS PAINT
GL50	GLASS PAINT
GL51	GLASS PAINT
GL52	GLASS PAINT
GL53	GLASS PAINT
GL54	GLASS PAINT
GL55	GLASS PAINT
GL56	GLASS PAINT
GL57	GLASS PAINT
GL58	GLASS PAINT
GL59	GLASS PAINT
GL60	GLASS PAINT
GL61	GLASS PAINT
GL62	GLASS PAINT
GL63	GLASS PAINT
GL64	GLASS PAINT
GL65	GLASS PAINT
GL66	GLASS PAINT
GL67	GLASS PAINT
GL68	GLASS PAINT
GL69	GLASS PAINT
GL70	GLASS PAINT
GL71	GLASS PAINT
GL72	GLASS PAINT
GL73	GLASS PAINT
GL74	GLASS PAINT
GL75	GLASS PAINT
GL76	GLASS PAINT
GL77	GLASS PAINT
GL78	GLASS PAINT
GL79	GLASS PAINT
GL80	GLASS PAINT
GL81	GLASS PAINT
GL82	GLASS PAINT
GL83	GLASS PAINT
GL84	GLASS PAINT
GL85	GLASS PAINT
GL86	GLASS PAINT
GL87	GLASS PAINT
GL88	GLASS PAINT
GL89	GLASS PAINT
GL90	GLASS PAINT
GL91	GLASS PAINT
GL92	GLASS PAINT
GL93	GLASS PAINT
GL94	GLASS PAINT
GL95	GLASS PAINT
GL96	GLASS PAINT
GL97	GLASS PAINT
GL98	GLASS PAINT
GL99	GLASS PAINT
GL100	GLASS PAINT
GL101	GLASS PAINT
GL102	GLASS PAINT
GL103	GLASS PAINT
GL104	GLASS PAINT
GL105	GLASS PAINT
GL106	GLASS PAINT
GL107	GLASS PAINT
GL108	GLASS PAINT
GL109	GLASS PAINT
GL110	GLASS PAINT
GL111	GLASS PAINT
GL112	GLASS PAINT
GL113	GLASS PAINT
GL114	GLASS PAINT
GL115	GLASS PAINT
GL116	GLASS PAINT
GL117	GLASS PAINT
GL118	GLASS PAINT
GL119	GLASS PAINT
GL120	GLASS PAINT
GL121	GLASS PAINT
GL122	GLASS PAINT
GL123	GLASS PAINT
GL124	GLASS PAINT
GL125	GLASS PAINT
GL126	GLASS PAINT
GL127	GLASS PAINT
GL128	GLASS PAINT
GL129	GLASS PAINT
GL130	GLASS PAINT
GL131	GLASS PAINT
GL132	GLASS PAINT
GL133	GLASS PAINT
GL134	GLASS PAINT
GL135	GLASS PAINT
GL136	GLASS PAINT
GL137	GLASS PAINT
GL138	GLASS PAINT
GL139	GLASS PAINT
GL140	GLASS PAINT
GL141	GLASS PAINT
GL142	GLASS PAINT
GL143	GLASS PAINT
GL144	GLASS PAINT
GL145	GLASS PAINT
GL146	GLASS PAINT
GL147	GLASS PAINT
GL148	GLASS PAINT
GL149	GLASS PAINT
GL150	GLASS PAINT
GL151	GLASS PAINT
GL152	GLASS PAINT
GL153	GLASS PAINT
GL154	

MATERIALS LEGEND

I, the undersigned, being a duly qualified and licensed architect, hereby certify that the plans and specifications herein are my original work, and that I am not aware of any person who has copied or used the same without my written consent. I further certify that the plans and specifications herein are not a copy of any other plans or specifications, and that I am not aware of any person who has copied or used the same without my written consent. I further certify that the plans and specifications herein are not a copy of any other plans or specifications, and that I am not aware of any person who has copied or used the same without my written consent.

Notwithstanding to whom the plans and specifications herein are submitted, the undersigned shall remain responsible for the accuracy and completeness of the same, and for any errors or omissions therein, and for any consequences arising therefrom, and for any costs or expenses incurred by any person in connection therewith.

FOR APPROVAL

Rev	Date	Revision	By	CHK.
1	24.06.2019	ISSUED FOR INFORMATION	BR	NH
2	26.06.2019	ISSUED FOR CA	BR	NH
3	02.07.2019	ISSUED FOR CA	BR	NH
4	02.07.2019	ISSUED FOR CA	BR	NH
5	02.07.2019	ISSUED FOR CA	BR	NH
6	26.07.2019	FINAL ISSUE FOR CA	BR	NH
7	17.03.2020	ISSUE FOR COORDINATION	NH	ND

DEEP SOIL CALCULATION - C&S DCP

Deep Soil - Minimum Dimension 10m (330m ²)
Deep Soil - Minimum Dimension 3m (233m ²)
Deep Soil - Minimum Dimension 2m (227m ²)

Site Area = 7467m² *The land dedication has been deducted
Required Deep Soil = 171m² (10%)
Total Proposed Deep Soil = 763m² (10%)
Excluding 2m Deep Soil = 533m² (7%)

Site Key



Project
Epsom Rd
94 - 104 Epsom Road, Zelland

Drawing Name
Deep Soil Calculation



Date
17.03.2020
Scale
1 : 200
Sheet Size
@ A1

Drawn
BR
CHK.
NH

Sub No.
Drawing No.
Revision
5997 DA-0733 / 7

3JB Architects
400 Crown Street
Sydney NSW 2000
2010 Australia
P 61 2 9388 9622
www.3jb.com.au