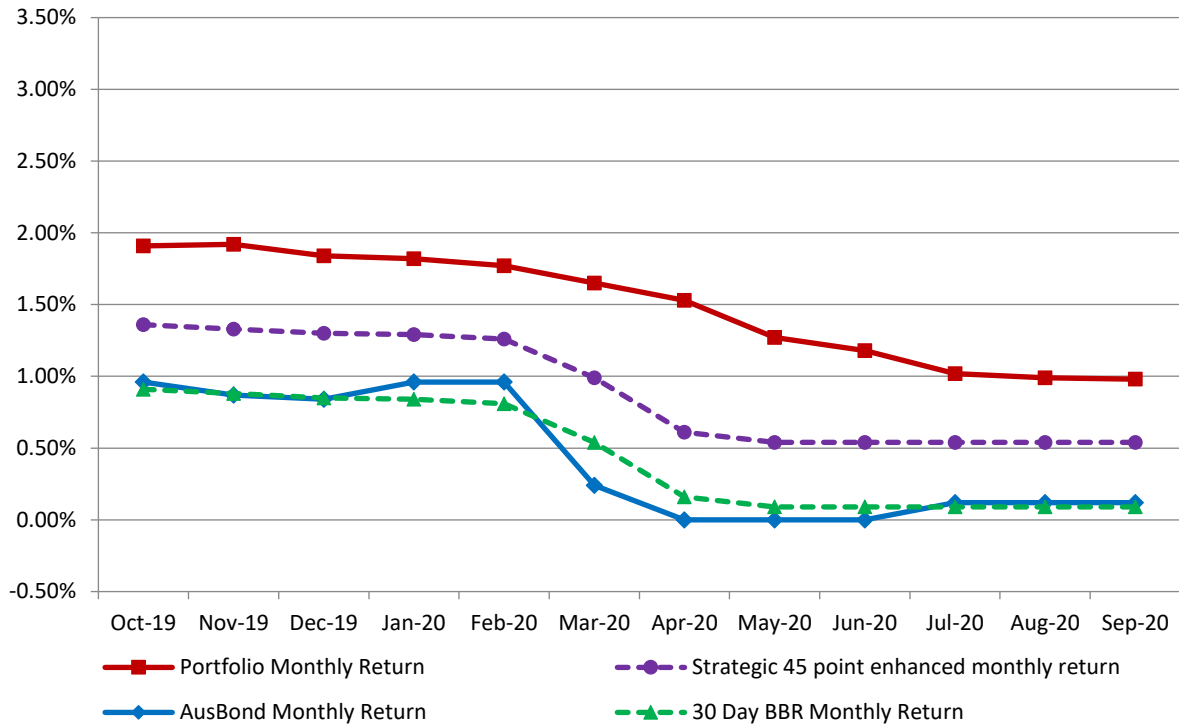


Attachment B

**Investment Performance
as at 30 September 2020**

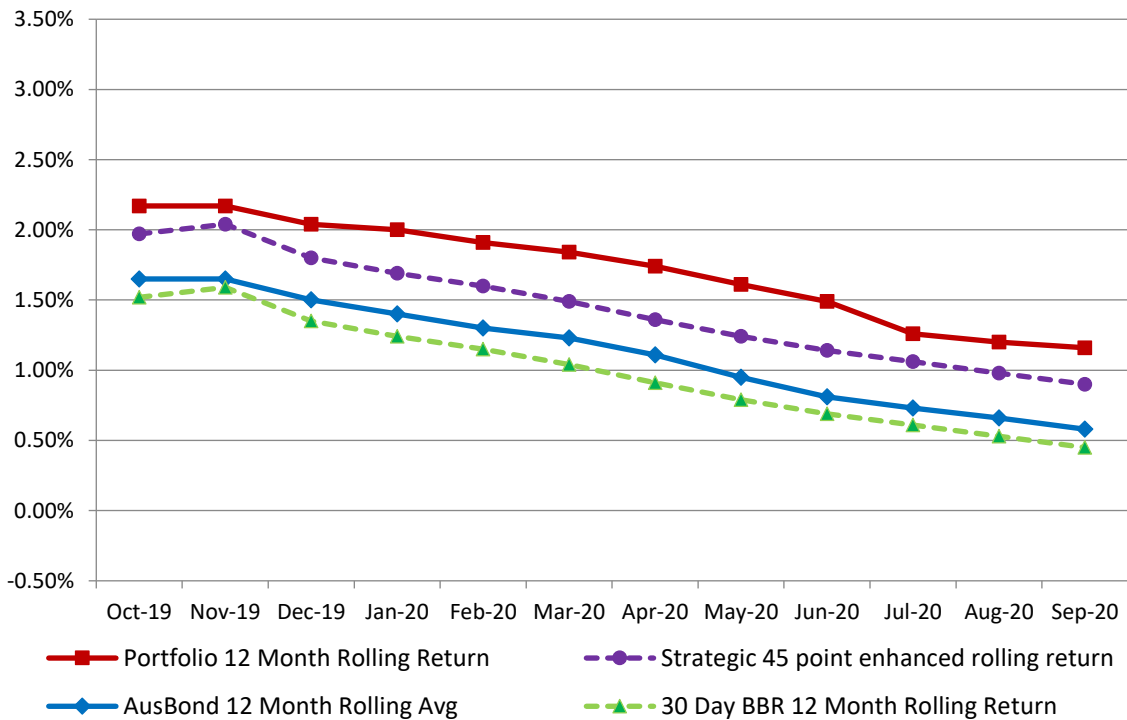
Monthly Results

Actual Portfolio vs Strategic Enhanced Benchmark vs AusBond Benchmark vs 30 Day BBR Benchmark
September 2020

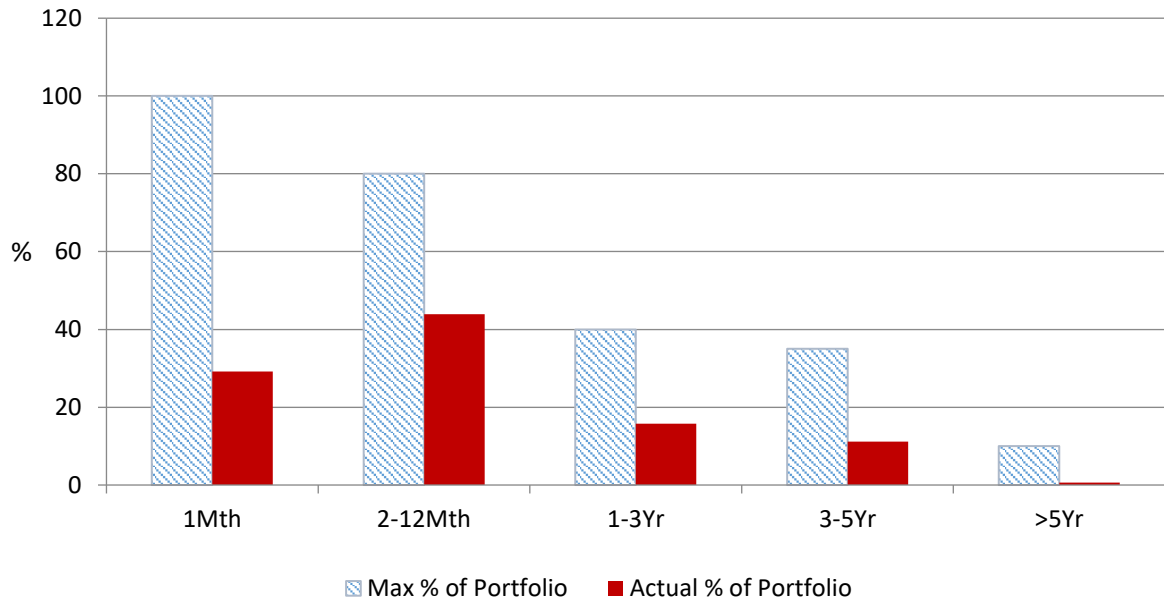


12 Month Rolling Averages

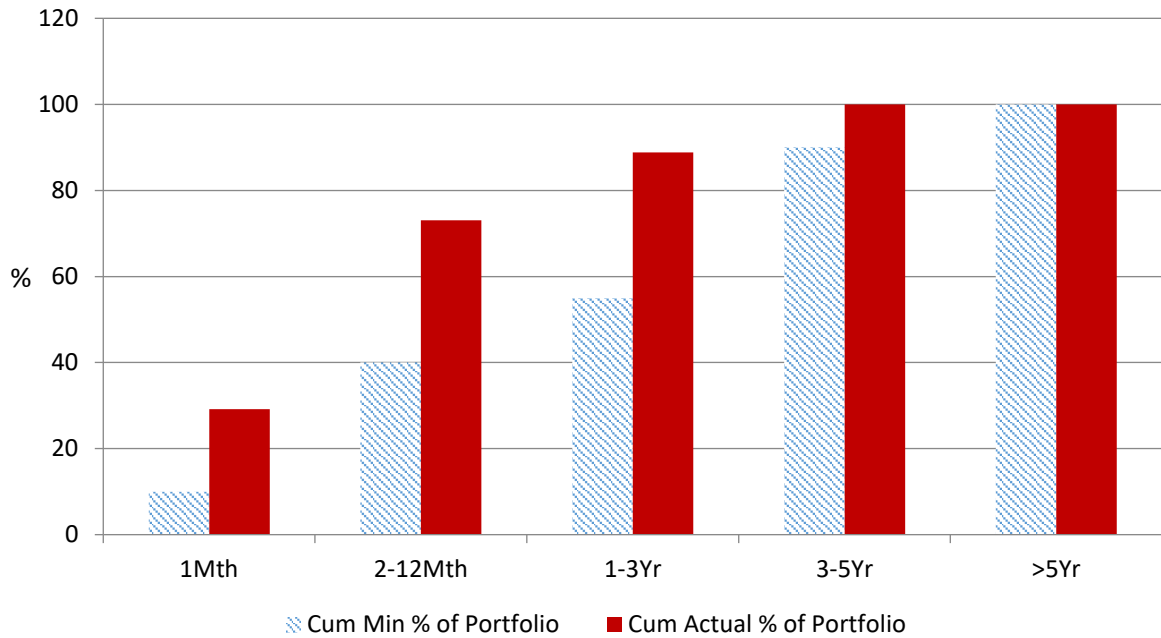
Actual Portfolio vs Strategic Enhanced Benchmark vs AusBond Benchmark vs 30 Day BBR Benchmark
September 2020



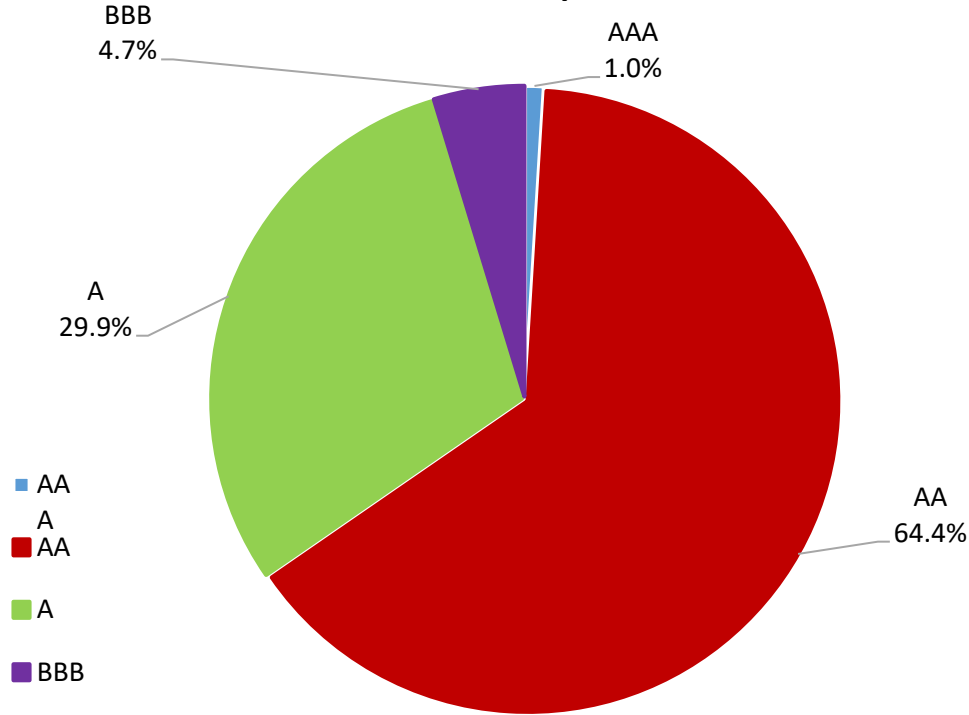
% Liquidity - Maximum Allowances as at 30 September 2020



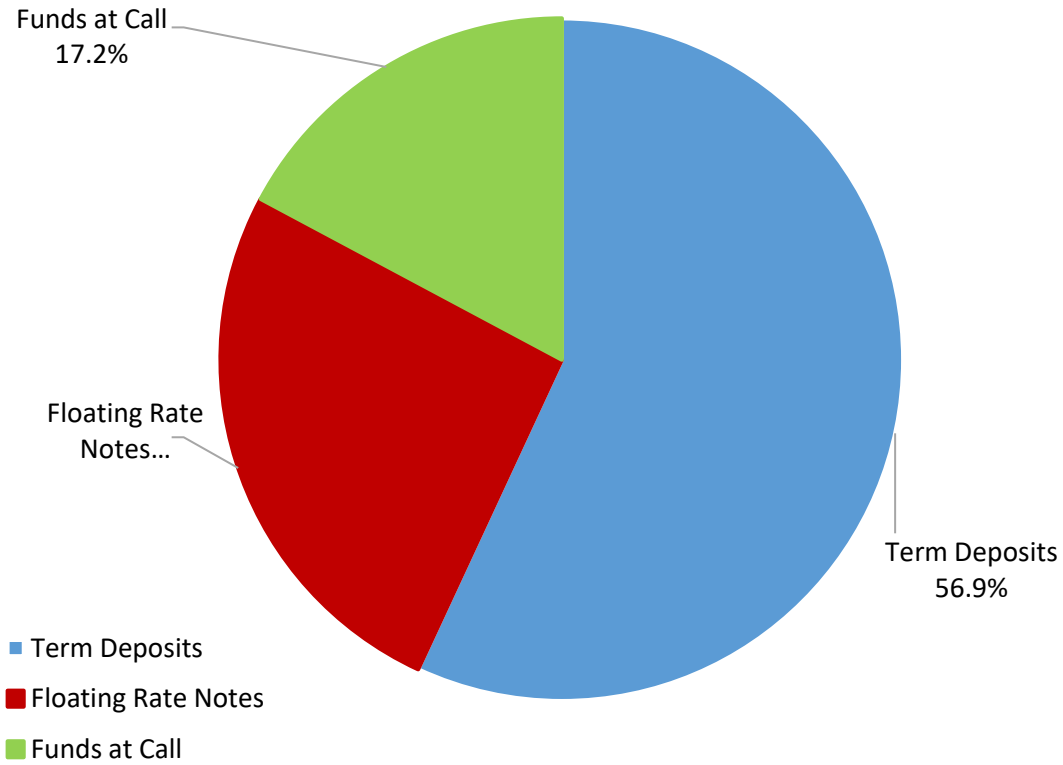
% Liquidity - Minimum Allocations as at 30 September 2020



Risk Profile as at 30 September 2020



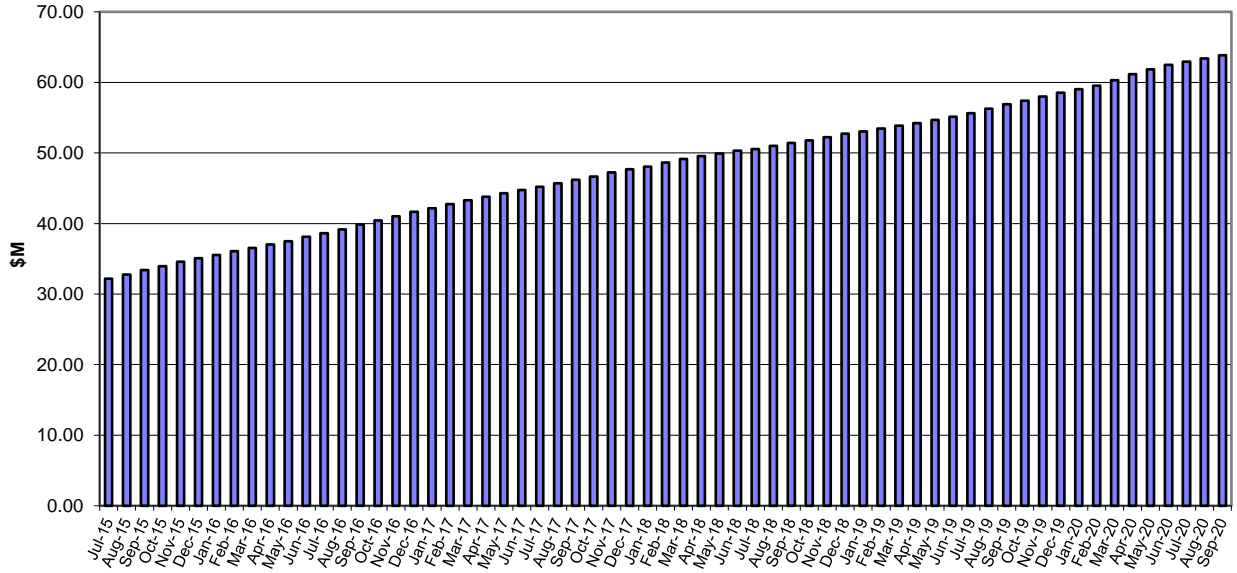
Investment Product Profile as at 30 September 2020



**INVESTMENT AND CASH DISTRIBUTION BY FINANCIAL INSTITUTION
AS AT 30 September
2020**

Institution Category	Financial Institution	Amount \$M	Financial Inst. %	Institution Cat. %
Australian Big 4 Bank (and related institutions)	ANZ Bank	43.0	6.9	
	Commonwealth Bank-related:	148.2	23.6	
	National Aust Bank	75.7	12.1	
	Westpac Banking Corporation	141.8	22.6	
Big 4 Total		408.7		65.2
Other Australian ADIs and Australian subsidiaries of foreign institutions	AMP Bank	5.0	0.8	
	Bank Australia Limited	5.0	0.8	
	Bank of China	4.5	0.7	
	Bank of Queensland	29.0	4.6	
	Bendigo & Adelaide Bank	40.0	6.4	
	Credit Union Australia Ltd	9.3	1.5	
	Heritage Bank	3.5	0.6	
	IMB	5.0	0.8	
	Macquarie Bank Ltd	50.0	8.0	
	ME Bank	39.8	6.3	
	Newcastle Permanent Building Society	0.0	0.0	
Suncorp Bank	27.5	4.4		
Other ADI Total		218.6		34.8
Grand Total		627.2	100.0	100.0

Cumulative Outperformance over AusBond Benchmark - 2015-2020



Cumulative Outperformance over 30 Day BBR Benchmark - 2015-2020

