

Attachment C

Engagement Report



Engagement report

Park on Lyons Road, Camperdown

October 2020

Contents

Background	3
Engagement summary	4
Key findings	5
Engagement activities	11
Appendix	13

Background

Over the next 10 years, we're upgrading more than 60 parks across the City of Sydney area, from small pocket parks to larger local parks.

Quality green open spaces are a high priority for our residents, workers and visitors. This network of park upgrades will create better quality open spaces for everyone to enjoy, help keep our city cooler, and support biodiversity in our local areas.

Prior to finalising the designs, we are consulting the community and stakeholders on these proposed park improvements. In 2020, we consulted on our stage 15 parks, which include:

- Minogue Crescent, Forest Lodge
- Peace Park, Chippendale
- Tote Park, Zetland
- Woolloomooloo Playground, Woolloomooloo
- **Park on Lyons Road, Camperdown**

Engagement summary

From 20 July to 24 August 2020, we asked the community for feedback on a concept plan to improve the park on Lyons Road in Camperdown.

Consultation on the plan provided an opportunity for stakeholders and the community to review and comment on the design.

Consultation activities included online engagement, a letter to residents and project signage at the park.

This report outlines the community engagement activities that took place to support the consultation and summarises the key findings from the consultation.

Purpose of the engagement

The purpose of the engagement was to:

- gather feedback from stakeholders and the community about the proposed upgrade
 - determine the level of satisfaction with the revised concept design.
-

Outcomes from the engagement

Submissions received during consultation

We received a total of 25 submissions (via Survey Monkey, email and phone) during the public exhibition period. The Sydney Your Say page was visited 261 times during the consultation period.

One submission was made on behalf of Mission Australia and the following affiliated organisations; Wildflower – Gardens for Good, The Growers at Mission Australia and Community Greening – The Royal Botanic Garden.

Key findings

Early engagement

Early engagement with residents took place in November 2019 to help inform the concept design. The early engagement highlighted that in its current form the park feels very open and empty. The respondents made a number of suggestions including formalising the diagonal path, provision of fitness equipment, request for additional planting (trees and gardens) and to provide more shade. Meeting with community members interested in the Community Garden highlighted the opportunities of this site to support such a program.

Meeting with the Glebe Community Development Project representative provided further suggestions around the type of programming suitable for the site such as spaces for social gathering, open space for people with dogs and support for fitness equipment.

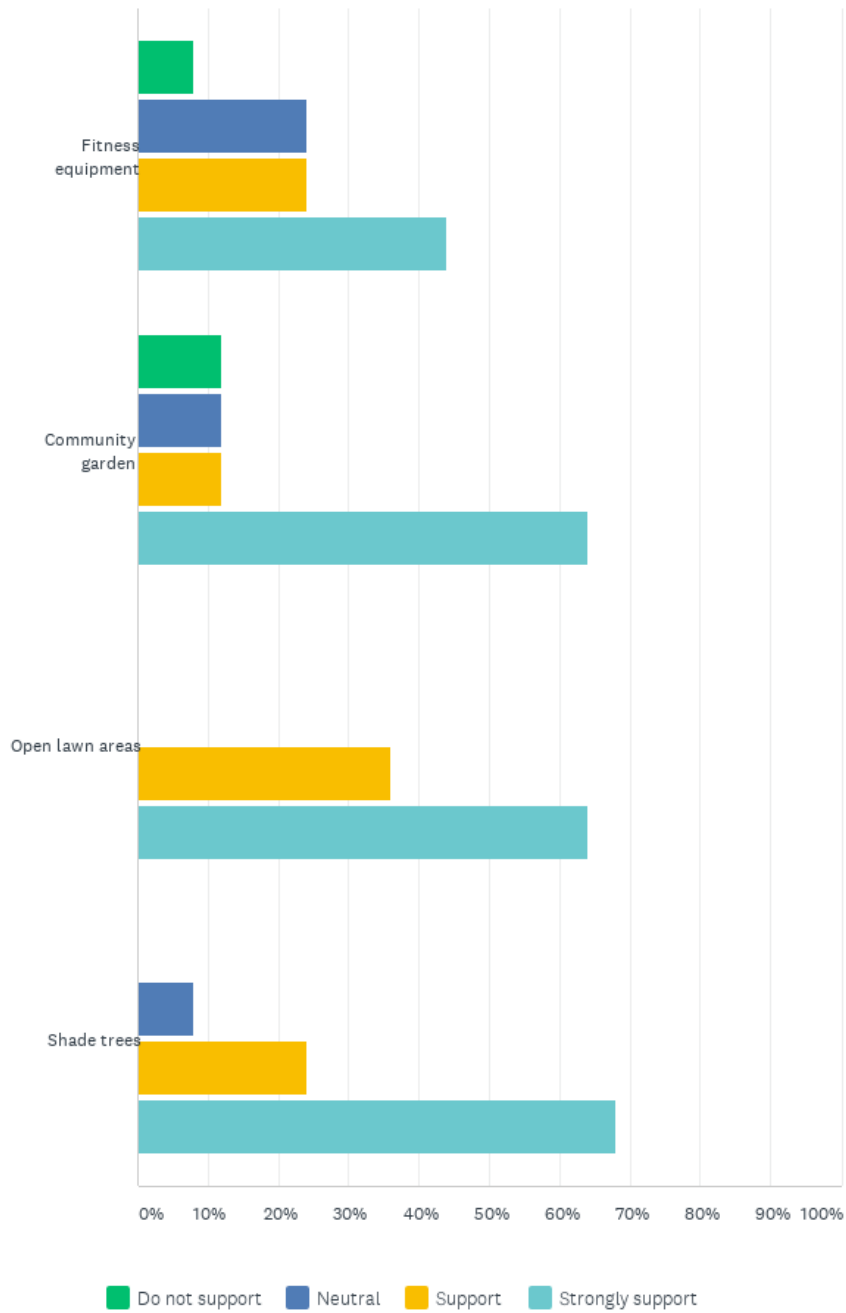
These comments are reflected in the draft concept plan which went to Public Exhibition.

Online feedback form - rating elements of the proposed upgrade

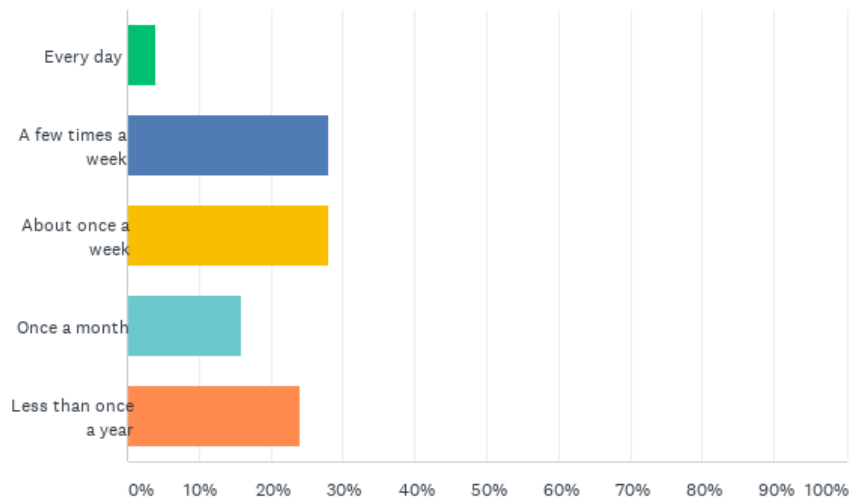
Respondents who completed the online feedback form were asked to rate how important elements of the proposed design were to them. 25 people completed the survey. The results are below

Engagement report

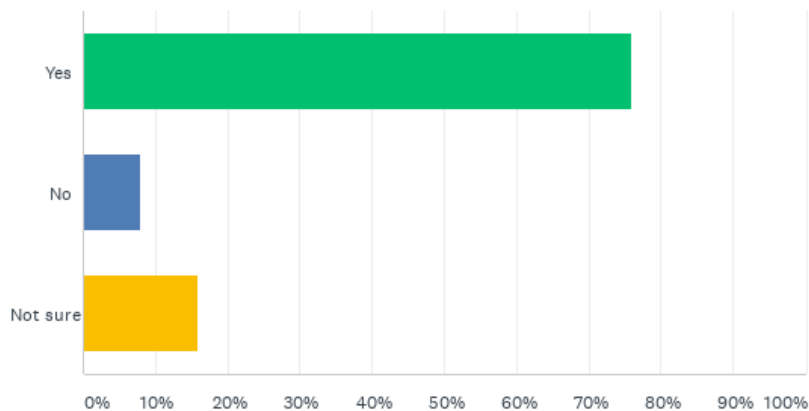
Q1 Do you support the following elements of the upgrade?



Q2 How often do you currently use the park?



Q3 Do you think that the upgrade would change your use of the park?



Subjects/topics raised in submissions

Several additional subjects/topics were raised in the feedback received. These were presented as concerns, suggestions and/or requests and are summarised below.

General		
Layout/Elements	Total	City of Sydney Response
Provide lighting to the park to increase safety.	2	Lighting will be provided to the park in line with the City Lighting Code. This will include lighting of the main pedestrian path through the park.

Engagement report

Provide bins. Two people requested that dog litter bins are provided.	4	Bins with dog litter bags will be provided as part of the upgrade.
Support for fitness equipment eg. chin up bar, bench, steps and softfall area for stretching	3	Noted. The fitness area will include a range of fixed equipment.
Fitness equipment not supported.	2	Noted. Fitness equipment on this site responded to pre-consultation feedback. It is understood that one of the existing uses of the park is for informal fitness work-outs and the aim of the upgrade is build-upon the existing uses of the park. All equipment will be rigid and robust.
Request to provide seating and tables.	1	Bench seats will be provided as part of this upgrade. The provision of picnic tables will be investigated as part of the detailed design phase.
Request to provide shade sails	1	Noted. Shade will be provided through the provision of additional tree planting on the site. Other shade types will be investigated as part of the detailed design.
Concern that there is excessive amount of seating for size of park. One person suggested that all seats should be removed on Lyons Road.	2	A range of seating opportunities is considered a key principle for all park upgrades. This means that the City aims to provide seating in both sun and shade at various times of the year, as well as seating which accommodates a variety of abilities.
Request for improved boundary condition. Consider fencing the park. One person suggested that this could include raised planter boxes or plants as an edge.	3	As part of the upgrade the City is aiming to provide a greater sense of boundary and protection within the reserve. This will be achieved through a range of measures; planting, change in materials and low seating walls. At this stage fencing is not included as part of the scope.
Request that the turf area is maintained. Rather than additional footpaths or fitness equipment.	2	Extent of turf will be reviewed as part of the detailed design phase.
Request for a play area. Two people suggest this should be for young children.	4	The proposed works to the park aim to provide improved amenity within the park to support the range of existing uses. At this stage due to the ongoing anti-social behaviour in the area, a playground is not supported at this time. The proposal sets up a flexible layout which could consider a play area in the future.
Request for a basketball court.	1	Due to the close proximity to residential properties, a basketball court is not being considered as part of this scope.
Request for an area for children to ride bikes, scooters, skateboards away from the road.	1	The new path will provide an area which could be used for scooters etc. A dedicated scooter area is not being considered as part of this scope.
Suggestion that Lyons Road is reduced in width to increase the park size.	1	Current planning nominates Lyons Road an industrial road. There is planning provision for this road to become a local road in the future. At this time the road layout and relationship to the park will be considered.
Request for space for mobile services van to pull up, including access to power and water	1	Noted. Provision of services will be considered as part of the detailed design phase.

Engagement report

Request for more trees to provide protection from the road and feel like a sanctuary.	1	The proposed planting and design layout aims to provide protection from the existing road and a sense of enclosure within the park. This however also needs to be balanced against the need for clear sightlines and access into and through the park.
Support for the access path through the centre	1	Noted.
Concern that the works will exacerbate the anti-social behaviour within the park, including drug use.	1	Design principles which focus on general safety and crime prevention are considered throughout the design process. The concerns are noted and will be addressed through a Design Safety Assessment. Consideration will be given to clear sightlines, lighting, passive surveillance, plant heights etc.
Suggestion for improved integration with the Booter Centre and with integration with the adjacent public housing. A social enterprise cafe.	1	The proposed works set up a flexible framework for the park to develop into the future. A key principle is to have an improved interface with the Booter Centre whilst retaining flexibility on this edge for the site to develop/change in the future.
Request to fix the drainage in the park.	1	As part of all park upgrades, how water is managed on site is important. Through the detailed design phase, detailed drainage plans will be prepared.
Community Garden	Total	City of Sydney Response
Support for community garden	5	Noted.
Community garden not supported. One person suggested that it could be used for other purposes. Another person did not think it would be well used.	2	Noted. The City has a rigorous system in place to ensure the success of community gardens. Should you require any further information please refer to https://www.cityofsydney.nsw.gov.au/community/participation/community-gardens
Suggestion for community garden to include bush-tucker.	1	The detail of the community garden will be developed in collaboration with the active community garden group.
Suggestion community garden includes community compost.	1	The detail of the community garden will be developed in collaboration with the active community garden group.
Project scope / timing / budget	Total	City of Sydney Response
Concern that the upgrade cannot take too long. A lot of local residents use that park for their dogs, and there is nowhere close by while this work is done.	1	Noted. Construction timing will be worked through at detailed design phase.

Consultation with Aboriginal and Torres Strait Islander Communities

A specialised indigenous consultant was engaged by the City's landscape architect to provide cultural advice and input on the design. Ideas raised during the indigenous consultation were:

- The significance of songlines and the story of water are key components in the inner City that can be able to all park projects and it would be good to see some connectivity between all parks.
- Participants encouraged the use of people's names from contemporary times as opposed to traditional. It was hoped that this would lead to curiosity in the person and encourage people to find out more about that person.

These ideas will be explored further during detailed design.

Engagement activities

Early engagement activities

Several activities were undertaken to engage residents living in the immediate area and key stakeholders to inform the development of the concept design.

1. Early engagement survey

From 5 November -19 November 2019, adjacent residents and key stakeholders were invited to fill out an early engagement survey or email feedback to the Sydney Your Say email address. Nine Submissions were received.

2. Email to key stakeholders

Ten groups were contacted about the proposal during the early engagement phase, including The Glebe Society, Friends of Orphan School Creek – Bushcare, Forest Lodge Public School, Police and Citizens Youth Club including the following groups using these facilities; The Talent Society, Gymbaroo, Karate Academy of Japan - Gojuryu Dojo and Youth and Family Connect.

3. Letter to residents

During the early engagement phase, a letter about the proposal was distributed to 20 residents living immediately adjacent to the park.

4. Engagement with Public Housing Tenants

The project was flagged at the Glebe/Camperdown Social Housing forum. The project team met with the Glebe Community Development Project who had previously collaborated with USYD students to engage with local residents on the potential of this site through the 'Green Space Project'.

5. Community Garden

The project team met with two residents who have previously expressed interest in a community garden on the site.

Public exhibition activities

1. Sydney Your Say webpage

A Sydney Your Say webpage, <https://www.cityofsydney.nsw.gov.au/council/your-say/park-playground-upgrades/improving-park-lyons-road-camperdown> was created. The page included an electronic copy of the revised concept design, survey and other key information about the consultation.

2. Online feedback form via Survey Monkey

The community and stakeholders were able to give feedback using an online feedback form. A link to the feedback form was provided on the Sydney Your Say website.

3. Sydney Your Say e-News

The consultation was included in the Sydney Your Say 11 August 2020 e-Newsletter (7,348 subscribers).

4. Consultation letter

A letter was posted to residents, inviting them to give feedback on the proposal. 617 letters were distributed.

5. Notification email

An email was sent to key stakeholders, Mission Australia - Common Ground, Joanna O'Dea Court - NSW Family and Community Services, Pocket City Farms, Camperdown, Forest Lodge Public School, Glebe Public School and the Glebe Community Development Project.

6. On site signage

Two notice boards were installed at the park on Lyons Road, inviting people to give feedback on the proposal.

7. Community meeting

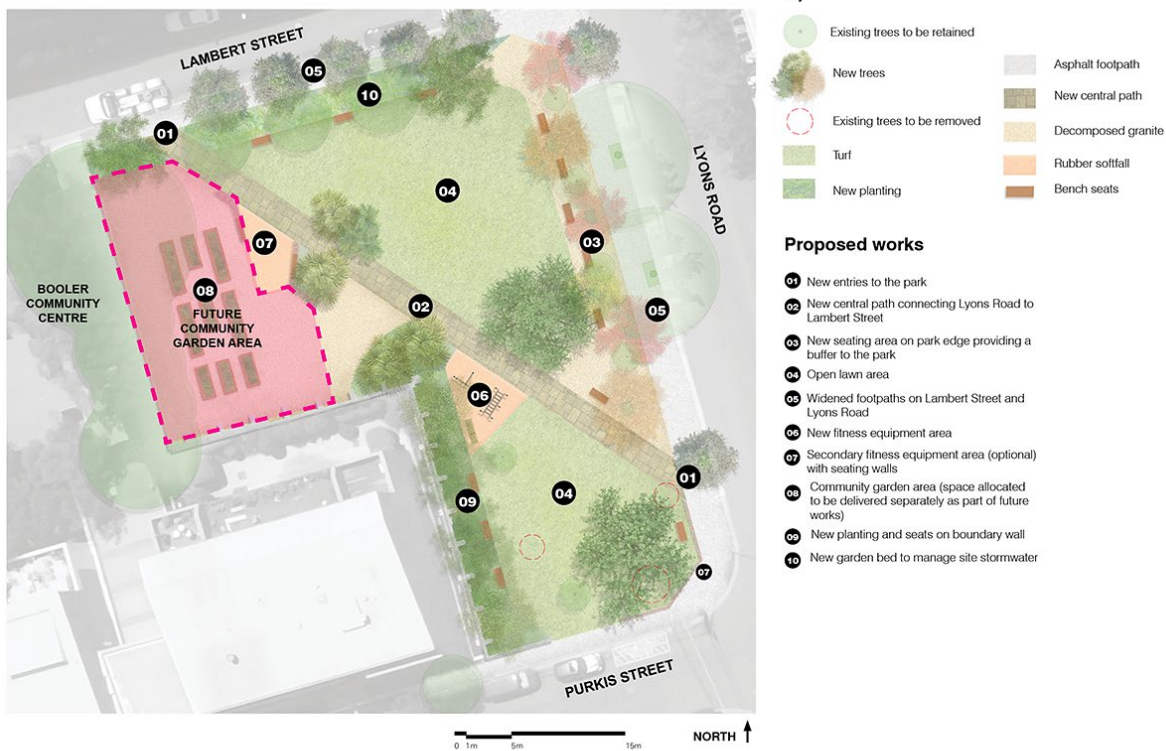
A Zoom meeting was scheduled for 28 July, 5 community members attended.

8. Resident/Glebe Community Development Project BBQ's

The project team attended two of the weekly BBQs which are facilitated by the Glebe Community Development Project to meet with tenants and discuss the project. This allowed for community members who may not have access to online services to provide input to the project.

Appendix

Appendix A: concept design



Park on Lyons Road upgrade - community consultation plan

CITY OF SYDNEY

Improving the park on Lyons Road, Camperdown



Under review

Contributions to this consultation are closed for evaluation and review. The project team will report back on key outcomes.

We plan to upgrade the park at Lyons Road, Camperdown and invite your feedback on the proposed design.

Over the next 10 years, we will upgrade more than 60 parks across the City of Sydney area, from small pocket parks to larger local parks.

Quality green open spaces are a priority for our residents, workers and visitors. These park upgrades will create better quality open spaces for everyone to enjoy, help keep our city cooler, and support biodiversity in our local areas.


The proposal for the park on Lyons Road includes:

- new park entries, paths and lighting
- new seating area on the Lyons Road edge
- wider footpaths on Lambert Street and Lyons Road
- new fitness equipment
- open lawn areas and new plants, trees and seats
- a new swale to manage stormwater
- space for a community garden next to the Booter Community Centre.

To accommodate these improvements, we need to remove 3 small trees (2 *angophora costata* and 1 *argyrodendron actinophyllum*). A total of 11 new trees will be planted as part of these works, increasing overall canopy cover in the park in line with our tree canopy targets.

How you can give feedback

You can [view the proposed design](#) and give your feedback by completing an online feedback form.

[Online form](#) 

Consultation closes at **5pm on Monday 24 August 2020**.

Feedback may be published in publicly available reports at the end of the consultation period. Your name or organisation's name may appear in these reports with your feedback attributed. If you would like your feedback to be kept confidential please let us know when making your submission

Key dates

Public consultation period
20 July to 24 August 2020

Online briefing
28 July 2020

Contacts


Helen Rogers
Design Manager

02 9265 9333
sydneyyoursay@cityofsydney.nsw.gov.au

Related projects

- [Park and playground upgrades](#)

Links

[Online form](#) 



Park upgrade plans

Do you live, visit or work in Woolloomooloo, Zetland, Chippendale, Forest Lodge or Camperdown? We're upgrading parks and playgrounds in your local area. Let us know what you think of the proposed designs:

- [Peace Park, Chippendale](#)
- [Tote Park playground, Zetland](#)
- [Minogue Crescent Reserve, Forest Lodge](#)
- [Woolloomooloo Playground, Woolloomooloo](#)
- [Park on Lyons Road, Camperdown](#)

Read more

Appendix C: Consultation letter



THE LORD MAYOR OF SYDNEY
CLOVER MOORE

20 July 2020

Improving the park on Lyons Road, Camperdown

The City of Sydney plans to upgrade the park on the corner of Lyons Road and Lambert Street in Camperdown and invite your feedback on the proposed design.

Over the next 10 years, we will upgrade more than 60 parks across the City of Sydney area, from small pocket parks to larger local parks. These park upgrades will create better-quality open spaces for everyone to enjoy, help keep our city cooler, and support biodiversity in our local areas.

The proposal for the park on Lyons Road includes:

- new park entries, paths and lighting
- a new seating area on the Lyons Road edge
- wider footpaths on Lambert Street and Lyons Road
- new fitness equipment
- open lawn areas and new plants, trees and seats
- a new swale to manage stormwater
- space for a community garden next to the Booter Community Centre.

To accommodate these improvements, we need to remove three small trees (two angophora costata and one argyrodendron actinophyllum). A total of 11 new trees will be planted as part of these works, increasing overall canopy cover in the park and in line with the City's tree canopy targets.

If you are interested in being part of the future community garden, please let us know via the survey on the City's website at cityofsydney.nsw.gov.au/council/your-say and our community garden coordinator will be in contact.

How to give feedback on the design

We know our residents, workers and visitors are focused on physical distancing and health and wellbeing, and many are experiencing economic stress. Visit cityofsydney.nsw.gov.au/covid19-response for more information on how the City is responding to the Covid-19 pandemic.

While the way our staff will consult with you may look a little different, we still want to hear from you and will provide plenty of opportunities to have your say on the projects and programs that affect you.

The proposed design is included with this letter. You can give feedback on this proposal at cityofsydney.nsw.gov.au/park-playground-upgrades by **5pm on 17 August 2020**.

We also invite you to a briefing on the proposed design with the project team via a Zoom video call on **Tuesday 28 July from 7pm to 7.30pm**. Register to join this meeting at the link above by 5pm on Sunday 26 July. After you register, we will provide you with more information to set up the video call.

Sydney Town Hall
483 George Street Sydney NSW 2000
Phone 02 9265 9229 Fax 02 9265 9328
cmoore@cityofsydney.nsw.gov.au

**Sustainable
Sydney 2030**

The time for action on
climate change is now

© OLM2020 004175 PARK ON LYONS ROAD

Next steps

We will report all feedback and any resulting design changes to Council. After Council resolves to proceed with the upgrade, we will continue to detailed design. We will keep you updated on the progress of this project.

For more information about the project, please contact Helen Rogers, City Design Manager, on 9265 9333 or at sydneyyoursay@cityofsydney.nsw.gov.au.

Yours sincerely

Clover Moore
Lord Mayor of Sydney



Have your say

Improving the park on Lyons Road

We plan to upgrade the park on Lyons Road and invite your feedback on the proposed design.

Over the next 10 years, we're upgrading more than 60 parks across the City of Sydney, from small pocket parks to larger local parks.

Quality green open spaces are a high priority for our residents, workers and visitors. This network of park upgrades will create better quality open spaces for everyone to enjoy, help keep our city cooler, and support biodiversity in our local areas.

You can view the proposed design and give feedback at cityofsydney.nsw.gov.au/park-playground-upgrades

Consultation closes at 5pm on Tuesday 11 August 2020.

We also invite you to a briefing on the proposed design with the project team via a Zoom video call on **Tuesday 28 July from 7pm to 7.30pm**. Register to join this meeting at cityofsydney.nsw.gov.au/park-playground-upgrades by **5pm on Sunday 26 July**. We will provide you with more information to set up the video call.

For more information about the project, please contact Helen Rogers, Design Manager on **02 9265 9333** or email sydneyyoursay@cityofsydney.nsw.gov.au