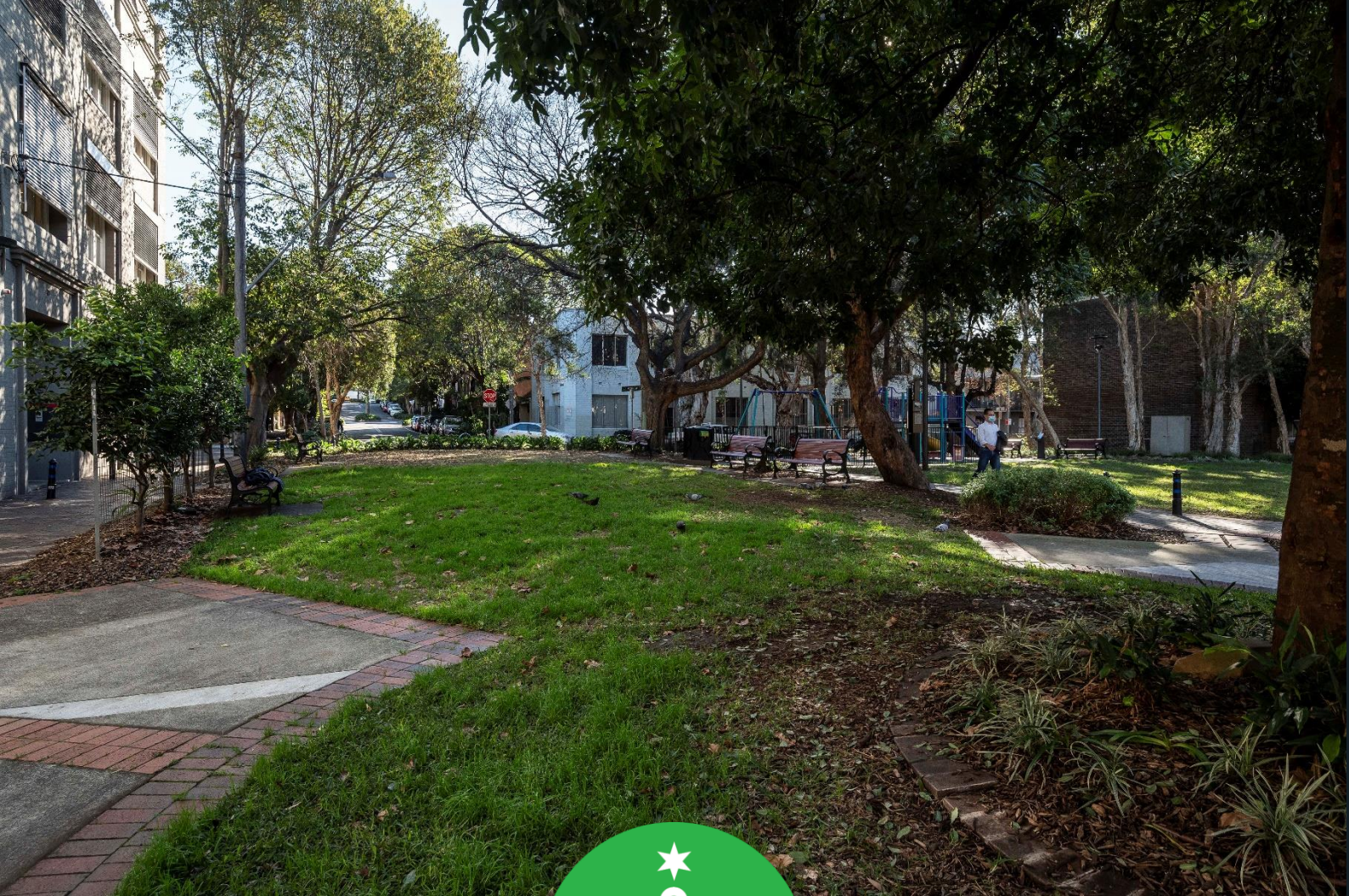


Attachment C

Engagement Report



Engagement report

Peace Park, Chippendale

January 2021

Contents

Background	3
Engagement summary	3
Key findings	5
Engagement activities	18
Appendix	19

Background

Over the next 10 years, we're upgrading more than 60 parks across the City of Sydney area, from small pocket parks to larger local parks.

Quality green open spaces are a high priority for our residents, workers and visitors. This network of park upgrades will create better quality open spaces for everyone to enjoy, help keep our city cooler, and support biodiversity in our local areas.

Prior to finalising the designs, we are consulting the community and stakeholders on these proposed park improvements. In 2020, we consulted on our stage 15 parks, which include:

- Minogue Crescent, Forest Lodge
- **Peace Park, Chippendale**
- Tote Park, Zetland
- Woolloomooloo Playground, Woolloomooloo
- Park on Lyons Road, Camperdown

Engagement summary

From 27 November to 18 December 2020, we asked the community for feedback on a revised concept plan to improve Peace Park, Chippendale.

The revised concept plan reflects community feedback received when we exhibited a concept design from 20 July to 24 August 2020. Key themes raised in the feedback included a review of the proposed turf type, shared path alignment, retaining all existing trees and increasing playground equipment.

Consultation activities included online engagement, a letter to residents, project signage at the park and two community design group meetings.

This report outlines the community engagement activities that took place to support the consultation and summarises the key findings from the consultation.

Purpose of the engagement

The purpose of the engagement was to:

- gather feedback from stakeholders and the community about the proposed upgrade
 - determine the level of satisfaction with the revised concept design.
-

Outcomes from the engagement

Submissions received during July/August 2020 consultation

We received a total of 64 submissions (via Survey Monkey, email and phone) during the public exhibition period. The Sydney Your Say page was visited 168 times during the consultation period.

Submissions received during Nov/Dec 2020 consultation

We received a total of 18 submissions during the consultation period. This included submissions via an online feedback form and the Sydney Your Say email address.

The Sydney Your Say page was visited 320 times during the consultation period.

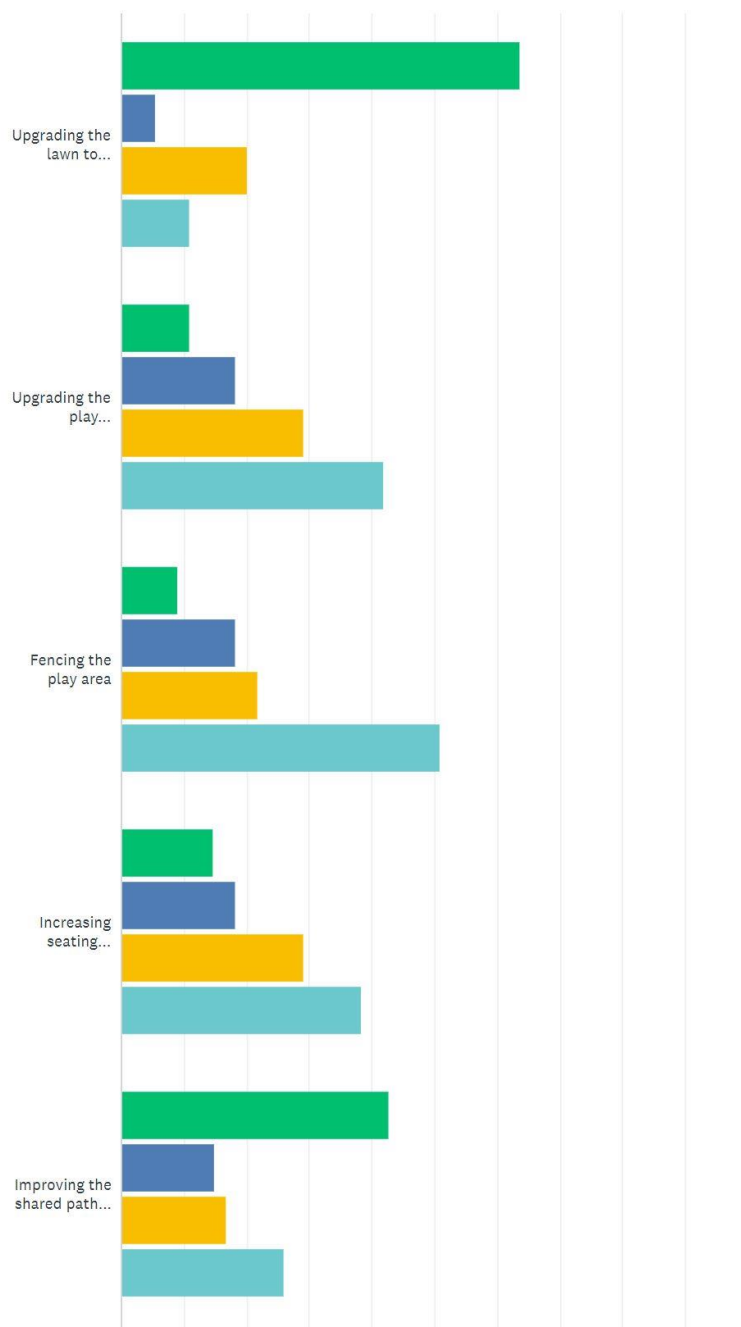
Key findings

Overview of key findings from July/August 2020 consultation

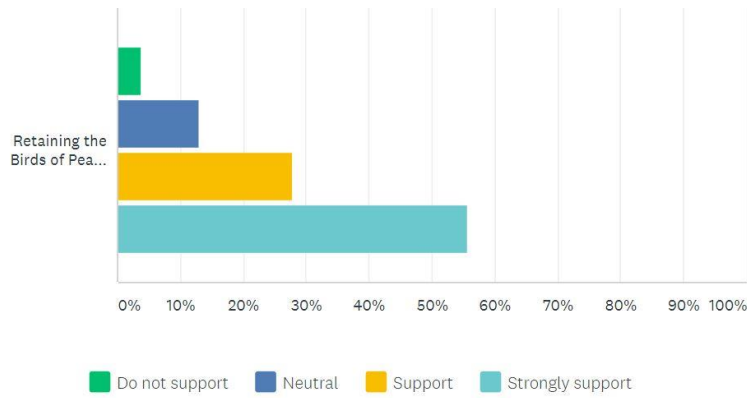
Respondents who completed the online feedback form were asked to rate how important elements of the proposed design were to them. The results are below

Do you support the following elements of the upgrade?

Answered: 55 Skipped: 0



Engagement report



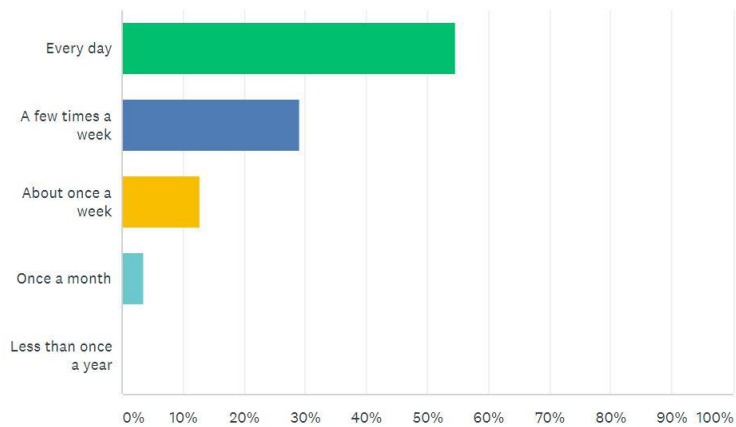
	DO NOT SUPPORT	NEUTRAL	SUPPORT	STRONGLY SUPPORT	TOTAL
▼ Upgrading the lawn to synthetic turf	63.64% 35	5.45% 3	20.00% 11	10.91% 6	55
▼ Upgrading the play area/equipment	10.91% 6	18.18% 10	29.09% 16	41.82% 23	55
▼ Fencing the play area	9.09% 5	18.18% 10	21.82% 12	50.91% 28	55
▼ Increasing seating opportunities	14.55% 8	18.18% 10	29.09% 16	38.18% 21	55
▼ Improving the shared path (cyclists and pedestrians)	42.59% 23	14.81% 8	16.67% 9	25.93% 14	54
▼ Retaining the Birds of Peace & Industry mosaic within the park	3.70% 2	12.96% 7	27.78% 15	55.56% 30	54

Comments (0)

Engagement report

How often do you currently use the park?

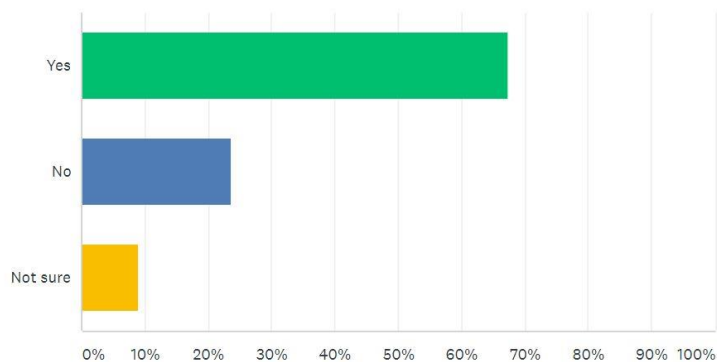
Answered: 55 Skipped: 0



ANSWER CHOICES	RESPONSES	
▼ Every day	54.55%	30
▼ A few times a week	29.09%	16
▼ About once a week	12.73%	7
▼ Once a month	3.64%	2
▼ Less than once a year	0.00%	0
TOTAL		55

Do you think that the upgrade would change your use of the park?

Answered: 55 Skipped: 0



ANSWER CHOICES	RESPONSES	
▼ Yes	67.27%	37
▼ No	23.64%	13
▼ Not sure	9.09%	5
TOTAL		55

Many respondents highlighted the importance of retaining as much natural turf as possible in the park and not using synthetic turf. There was also strong opposition to realigning the current shared path.

There was strong support for the upgrade to the existing play equipment and the opportunity to create more seating in the park.

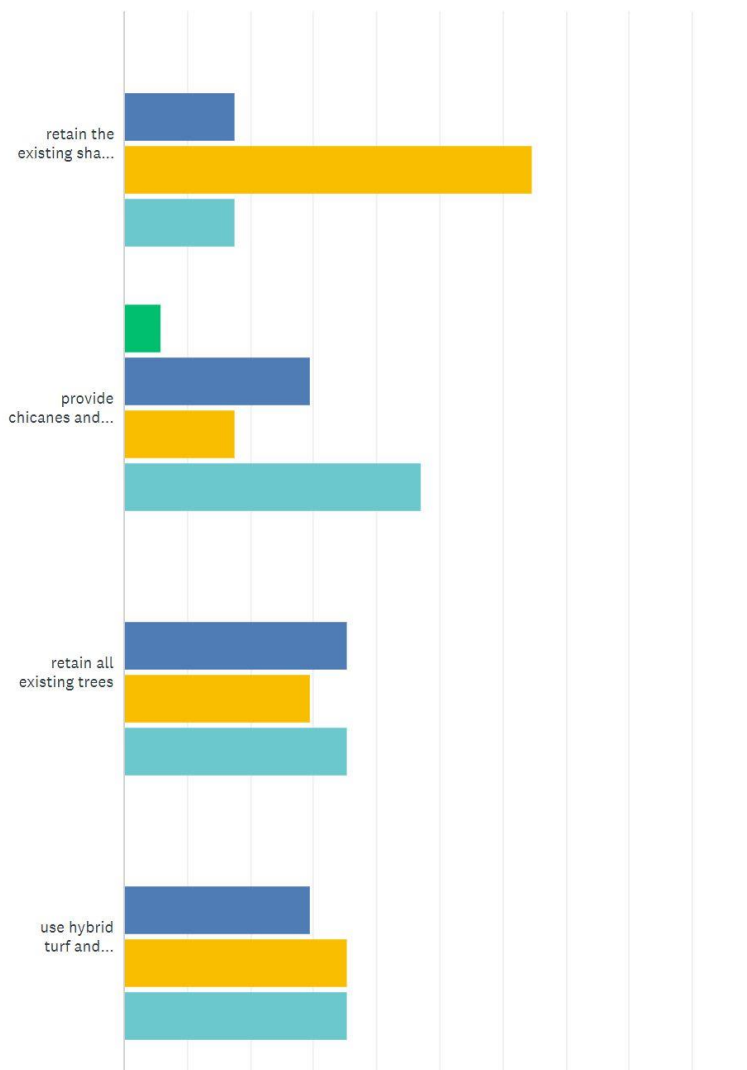
Overview of key findings from Nov/Dec 2020 consultation

The majority of the community feedback supported the amendments made to the draft concept plan. Generally, respondents indicated that the revised concept plan better reflected the unique character of the park and balanced the need for play provision with more passive recreation activities.

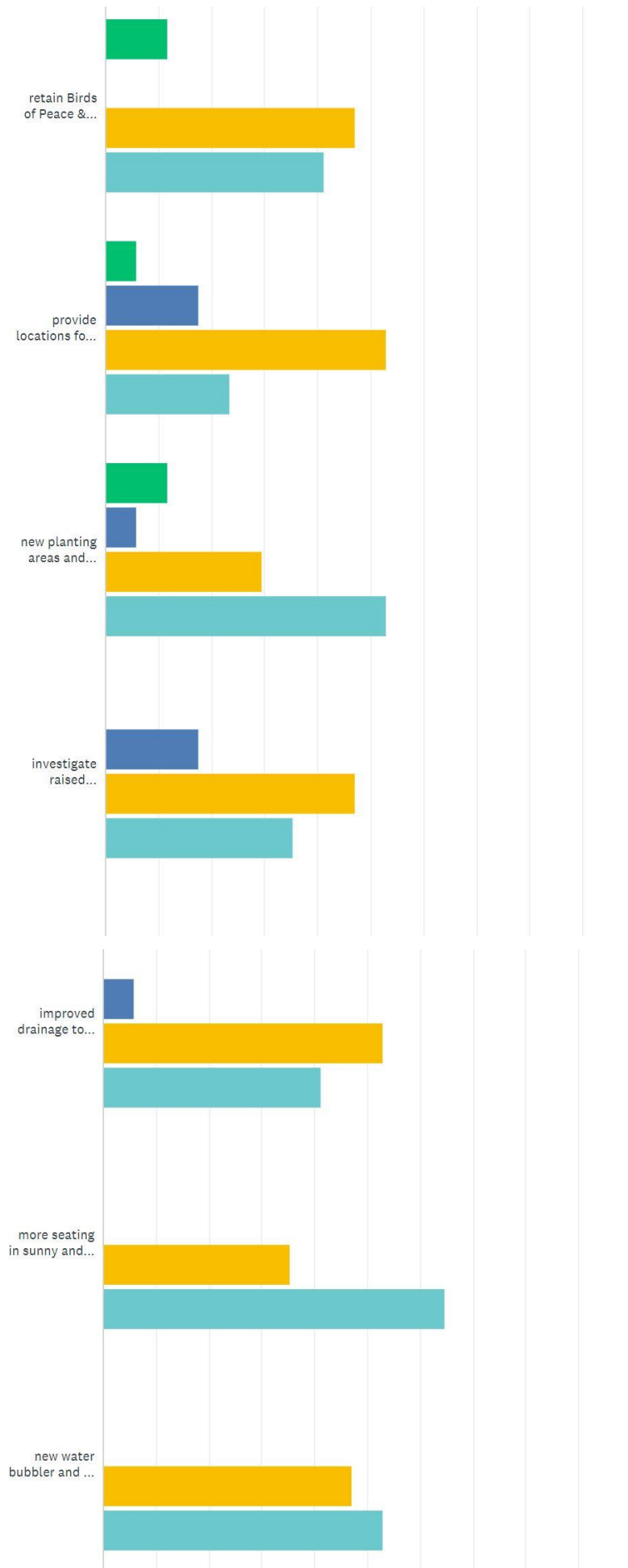
Respondents who completed the online feedback form were asked to rate how important elements of the proposed design were to them. The results are below:

Do you support the following elements of the upgrade?

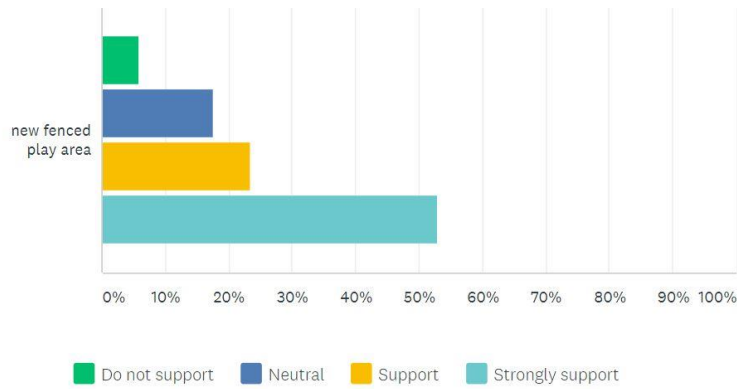
Answered: 17 Skipped: 0



Engagement report



Engagement report



	DO NOT SUPPORT	NEUTRAL	SUPPORT	STRONGLY SUPPORT	TOTAL
retain the existing shared path location/alignment	0.00% 0	17.65% 3	64.71% 11	17.65% 3	17
provide chicanes and bollards to slow cyclists	5.88% 1	29.41% 5	17.65% 3	47.06% 8	17
retain all existing trees	0.00% 0	35.29% 6	29.41% 5	35.29% 6	17
use hybrid turf and consolidate lawn in the sunniest area to aid growth	0.00% 0	29.41% 5	35.29% 6	35.29% 6	17
retain Birds of Peace & Industry mosaics in the existing location	11.76% 2	0.00% 0	47.06% 8	41.18% 7	17
provide locations for future community artwork/mosaics	5.88% 1	17.65% 3	52.94% 9	23.53% 4	17
new planting areas and future opportunity for community garden and composting bin	11.76% 2	5.88% 1	29.41% 5	52.94% 9	17
investigate raised thresholds on Buckland Street and Pine Street	0.00% 0	17.65% 3	47.06% 8	35.29% 6	17
improved drainage to capture rainwater and retain water on site	0.00% 0	5.88% 1	52.94% 9	41.18% 7	17
more seating in sunny and shady locations	0.00% 0	0.00% 0	35.29% 6	64.71% 11	17
new water bubbler and dog bowl	0.00% 0	0.00% 0	47.06% 8	52.94% 9	17
new fenced play area	5.88% 1	17.65% 3	23.53% 4	52.94% 9	17

Subjects/topics raised in submissions

Several subjects/topics were raised in the feedback received. These were presented as concerns, suggestions and/or requests and are summarised below.

General		
Project Scope	Total	City of Sydney Response
Supportive comments about the new design: <ul style="list-style-type: none"> “I think the new arrangement addresses the need for multiple equipment to be shared amongst the regular crowd.” “It’s hard to imagine what hybrid turf will be like, but it sounds like the council is trying to keep turf natural while making it durable. Well done if so” “I like the swings and the play equipment itself definitely needs an upgrade, so I support that. I think those and some of these smart changes would improve the use of the park”. 	3	Noted.
Layout	Total	City of Sydney Response
Requests for additional chicanes/bollards at the south/west corner adjacent to the café.	1	Design team to review in next phase of design. Measures to slow bikes will be incorporated in the design.
Planting	Total	City of Sydney Response
Support for hybrid turf	1	Included in the proposed upgrade.
Concerns with natural turf; <ul style="list-style-type: none"> What is the problem with the grass. 	1	<p>Peace Park is a highly utilised pocket park. The turf struggles to thrive due to high use demands and shaded conditions. The turf gets less than 4 hours of sun per day.</p> <p>The City undertakes regular turf maintenance including; mowing, edging, decompaction, fertilisation and resting.</p> <p>The City has trialled different turf species (including shade tolerant species) and undertaken soil preparation to improve subsoil conditions.</p>

		As part of the park upgrade the City will be installing a central hybrid turf area to improve turf coverage and durability.
Playground	Total	City of Sydney Response
Requests to increase the playground area.	2	<p>Not currently being investigated for this site.</p> <p>The new layout and proposed work aims to provide improved amenity to support the range of existing uses and users.</p> <p>Peace Park is a well utilised and loved pocket park by a wide variety of users. The park provides a place for children to play, people to meet, exercise, walk their dogs, eat their lunch or drink a take-away coffee from the adjacent café.</p>
Requests to retain current playground footprint/reduce size of playground area.	2	Noted. The new layout and proposed work aims to provide improved amenity to support the range of existing uses and users.
Support for equipment to cater for all ages and abilities.	1	<p>The City provides a variety of playspaces and play equipment for the recreational and developmental needs of children of all ages and abilities. Where possible, the City will provide a diverse, inclusive and accessible range of playspaces across the City's park networks.</p> <p>The playground upgrade will be designed to be inclusive and maximise play experience.</p> <p>In pre-consultation we heard that the curly slide was a well loved equipment piece that should be retained.</p> <p>As part of the first round of community consultation we heard that more equipment pieces including swings was preferred.</p> <p>Consideration has been given to the provision of play equipment in surrounding parks within a 500m radius, to ensure a coordinated network of facilities that caters for a broad range of park users.</p>
Request to consider site's shaded damp environment and issues with mosquito.	2	Design team to investigate and incorporate in next phase of design.

Requests for water and music play elements as well as pedal powered equipment.	3	<p>Not currently being investigated for this site.</p> <p>Water play and pedal powered equipment are generally proposed where a high level of maintenance can be achieved at 'destination' parks.</p> <p>Musical play equipment is not proposed as part of this park upgrade due to proximity to residential units.</p>
Requests for more play equipment for younger children.	1	<p>The playground upgrade aims to provide an opportunity for multiple children of all ages and range of abilities to play together.</p> <p>Consideration has been given to the provision of play equipment in surrounding parks within a 500m radius, to ensure a coordinated network of facilities that caters for a broad range of park users.</p> <p>Alternate play areas with play equipment suitable for younger age groups can be found at Strickland Park and Victoria Park.</p>
Request to increase play equipment - more swings, slides and climbing elements.	3	<p>The selection and layout of equipment is currently being reviewed. We will provide additional play equipment where possible and maximise play experiences.</p>
Park Amenities	Total	City of Sydney Response
Requests for picnic table and seating.	2	<p>A range of seating opportunities will be provided as part of the upgrade. These will include seats in sun and shade as well as seating with back rests and arm rests and platform benches.</p> <p>No picnic tables are proposed as part of the upgrade due to proximity to residences. Picnic tables and BBQs are provided at Victoria Park.</p>
Opposition to retaining the Birds of Peace and Industry mosaics in its current location.	2	<p>Not currently being investigated for this site.</p> <p>In the draft concept we proposed to relocate the mosaics to an alternate location to provide more area for turf in the sunniest location. During public consultation we heard that retaining the</p>

		mosaics in their current location was important to the community.
Requests for exercise equipment.	1	<p>Not currently being investigated for this site.</p> <p>Peace Park is a well utilised and loved pocket park by a wide variety of users. The revised concept design responds to the pre-consultation and consultation feedback.</p> <p>The proposed works to the park aim to provide improved amenity within the park to support the range of existing uses.</p>
Requests for a water sculpture/feature connecting water from adjacent private properties	1	<p>Not currently being investigated for this site.</p> <p>This site is not nominated as part of the Public Art Strategy and therefore not being considered as part of the scope of works.</p>
Requests for a bird bath	1	Design team to review in next phase of design.
Requests for a fenced dog area.	1	<p>Not currently being investigated for this site.</p> <p>The existing fencing to Pine street will be retained and new fencing installed to Buckland street. New planting and chicanes will also provide a sense of enclosure to the turf area from the adjacent streets.</p> <p>Dogs are welcome at many different parks in the City of Sydney. We clearly signpost off-leash, on-leash and prohibited areas (playgrounds) and provide dog litter bag dispensers. For more information, please visit https://www.cityofsydney.nsw.gov.au/dog-parks-in-sydney</p>
Request for two bins.	1	<p>A City of Sydney bin will be provided as part of the upgrade.</p> <p>There is currently one bin in Peace Park and it is serviced everyday, including weekends. We have reviewed park enquiries and service levels with our Waste Team and the bin is usually half full with rubbish not being pushed down properly.</p>

Engagement report

		The City will continue to monitor bin levels and enquiries, and when required install additional bins.
Other	Total	City of Sydney Response
Requests for regular park maintenance.	1	<p>The Park's maintenance team inspects the playground and empty rubbish bins daily. Turf is regularly mowed and maintained and trees are inspected annually.</p> <p>We have forwarded your feedback to our Park's Maintenance Team.</p> <p>To report future park maintenance issues, don't hesitate to contact our Customer Service desk on 02 9265 9333 or you can report an issue online such as trees on City property requiring maintenance or any other issues that impact your community at: https://online.cityofsydney.nsw.gov.au/ReportIssue</p>
Request/support for WSUD design features such as agricultural drainage pipes.	2	As part of all park upgrades, how water is managed on site is important. WSUD opportunities will be investigated and incorporated in the next phase of the design.
Request to modify existing rainwater gardens in Buckland Street	1	<p>Not currently being investigated as part of park upgrade scope of works.</p> <p>We have forwarded your feedback to the City's Infrastructure, Traffic and Operations Team. The City is currently reviewing our raingardens including those referenced in Buckland Street. An enquiry has been raised and will be addressed in the near future.</p> <p>The City of Sydney is committed to maintaining a clean and safe community. If you observe City property requiring maintenance, trip hazards or any other issues that impact your community please report it at: https://online.cityofsydney.nsw.gov.au/ReportIssue</p>
Request to provide raised thresholds at Pine Street and Buckland Street	1	<p>Not currently being investigated as part of park upgrade scope of works.</p> <p>We have forwarded your feedback to the</p>

		City's Infrastructure, Traffic and Operations Team.
Requests to provide annual reporting on park infrastructure and feedback.	1	<p>Not currently being investigated as part of park upgrade scope of works.</p> <p>Requests for maintenance and asset records can be lodged through our website at: Request City Records (https://www.cityofsydney.nsw.gov.au/library-information-services/request-city-records). This process is required to be followed so staff can ensure all information is provided in accordance with the overnment Information (Public Access) Act 2009.</p>
Request for lighting in the park to be solar powered with battery.	1	<p>Not currently being investigated for this site.</p> <p>The City's power is 100% renewable from wind and solar farms in regional NSW. This deal helps grow the renewable section in NSW and provide more jobs in the regional economy. For more information on our electricity deal, you can visit our website (https://news.cityofsydney.nsw.gov.au/articles/5-things-to-know-about-our-electricity-deal).</p> <p>Peace Park is a well shaded pocket park. The City recently removed a solar light in the park due to performance and failure over a period of time. Solar lights are high maintenance assets that require considerable solar access and an increased number of poles/lights in order to comply with safety and lighting level requirements. It is for these reasons that solar lights are not being considered as part of the park upgrade.</p>
Request for wind turbine with solar panels and battery to power park irrigation.	1	<p>Not currently being investigated for this site.</p> <p>Urban areas have poor wind resources and are extremely turbulent due to adjacent obstacles (such as trees and nearby buildings or structures) resulting in poor productivity and efficiency.</p> <p>The City's power is 100% renewable from wind and solar farms in regional NSW. This deal helps grow the renewable section in NSW and provide</p>

		<p>more jobs in the regional economy. For more information on our electricity deal, you can visit our website (https://news.cityofsydney.nsw.gov.au/articles/5-things-to-know-about-our-electricity-deal).</p>
Request for community composting facility.	1	<p>Not currently being investigated as part of park upgrade works.</p> <p>The City's Community Gardens Policy supports community composting in parks on a trial basis and where there is a group of local residents maintaining the compost system. The City has a rigorous system in place to ensure the success of community gardens and composting facilities.</p> <p>The City's Community Garden Guidelines and Community Composting Guidelines contain all the information required to establish, operate and manage a community garden. These documents are available for download on the City's website.</p>
Request for garden bed to be built on the south/western corner of the park, adjacent to the shared path.	1	<p>This garden bed was previously proposed in the Broadway cycleway concept however was not built in order to increase pedestrian access of the shared path.</p> <p>As part of the detailed design phase we will review access and safety along the shared path for all users.</p>

Engagement activities

Overview of engagement undertaken in 2020

A Sydney Your Say webpage was created, along with an online survey. 969 letters were sent to residents in the area and key stakeholders were contacted.

A Zoom briefing was scheduled for 17 July and 9 residents attended.

A meeting onsite was scheduled for 29 October 2020 with four community members to discuss the revised design concept plan.

1. Sydney Your Say webpage

A Sydney Your Say webpage, <https://www.cityofsydney.nsw.gov.au/proposed-works-maintenance/improving-peace-park-chippendale> was created. The page included an electronic copy of the revised concept design, survey and other key information about the consultation.

A second page for the revised design was also created, <https://www.cityofsydney.nsw.gov.au/proposed-works-maintenance/revised-plans-improve-peace-park-chippendale>

2. Online feedback form via Survey Monkey

The community and stakeholders were able to give feedback using an online feedback form. A link to the feedback form was provided on the Sydney Your Say website.

3. Sydney Your Say e-News

The consultation was included in the Sydney Your Say July and November 2020 e-Newsletter (4,070 subscribers).

4. Consultation letter

A letter was posted to residents, inviting them to give feedback on the proposal. 969 letters were distributed for both consultations in July and November.

5. Notification email

An email was sent to key stakeholders, including the the Chippendale Residents Interest Groups, Sustainable Chippendale, Black Friars Childcare centre and SDN Children's Education and Car Centre, inviting them to give feedback on the proposal.

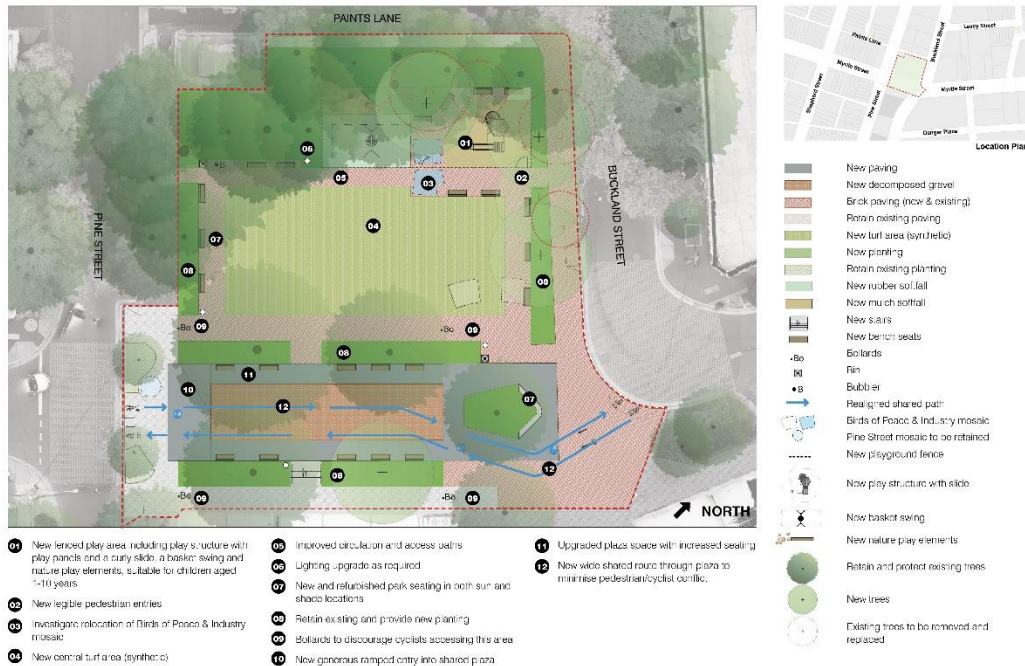
6. On site signage

Two notice boards were installed at Peace Park, inviting people to give feedback on the proposal.

Appendix

Appendix A: July/August 2020 concept design

Proposed works



Peace Park upgrade - community consultation plan

CITY OF SYDNEY

Appendix B: 2020 concept design (revised)

Proposed works



Peace Park upgrade - revised community consultation plan

CITY OF SYDNEY

Appendix C: Sydney Your Say webpage

[Proposed works & maintenance](#)

Revised plans to improve Peace Park, Chippendale

The updated plan reflects what we heard from the community during the July–August 2020 consultation process.

← Related to [Park & playground works](#)

Chippendale

Under review

Contributions to this consultation are closed for evaluation and review. The project team will report back on key outcomes.

PUBLIC CONSULTATION PERIOD
27 November 2020 to 18 December 2020

What we're doing

We've updated the plan to reflect community feedback on the importance of retaining all the trees, the shared path alignment and the location of the Birds of Peace and Industry mosaics. We also propose hybrid (natural reinforced) turf located in the park's sunniest area.

The revised proposal for Peace Park includes:

- new fenced play area including play structure with a curly slide
- swing set and 3 seats (2 regular seats and 1 baby seat)
- informal nature play elements such as stepping stones and logs
- lawn planted with hybrid reinforced turf in the park's sunniest area
- more seating in sunny and shady areas and upgraded lighting as required
- new water bubbler and dog bowl
- better drainage to capture rainwater for use onsite.

As part of the works we'll provide locations for future community artwork opportunities to be investigated. We'll also investigate locations for compost bins and raised thresholds on Buckland Street and Pine Street.

All trees in the park will be retained and we'll add more plants.

Revised concept design

PDF · 359.16 KB · Last updated 27 November 2020

Lucy Farley
DESIGN MANAGER

02 9265 9333

sydneyyoursay@cityofsydney...
COPY EMAIL ADDRESS

Speak up. Sign up.
Get our regular newsletter to have your say.

Subscribe

Related projects

[Improving Peace Park, Chippendale.](#)

Appendix D: Nov/Dec 2020 consultation letter



City of Sydney
Town Hall House
456 Kent Street
Sydney NSW 2000

+61 2 9265 9333
council@cityofsydney.nsw.gov.au
GPO Box 1591 Sydney NSW 2001
cityofsydney.nsw.gov.au

27 November 2020

Revised plans to improve Peace Park, Chippendale

We have updated our plans to upgrade the park and playground at Peace Park and invite your feedback on the revised design.

The updated plans reflect community feedback on the importance of retaining all the trees and supporting natural turf, the shared path alignment and the location of the birds of Peace & Industry mosaics. We have also updated the proposed playground elements.

The revised proposal for Peace Park includes:

- a new fenced play area including play structure with a curly slide
- a swing set and three seats (two regular seats and one baby seat)
- informal nature play elements such as stepping stones and logs
- lawn planted with hybrid reinforced turf and located in the park's sunniest area
- more seating in sunny and shady locations and upgraded lighting as required
- a new water bubbler and dog bowl
- better drainage to capture rainwater for use on site.

As part of the works, we will provide locations for future community artworks or mosaics and investigate raised thresholds on Buckland Street and Pine Street.

All trees in the park will be retained. We are putting in an extra planting area for a possible edible garden. A sketch showing the revised design is on the back of this page.

How to give feedback on the design

You can give view and give feedback on the proposal online at cityofsydney.nsw.gov.au/park-playground-upgrades. Feedback can be provided until **5pm on Friday 18 December 2020**.

Next steps

We will report all feedback and any resulting design changes to Council. If Council resolves to proceed with the upgrade, our staff will work on detailed designs and we will keep you updated on progress.

For more information about the project, please contact Lucy Farley, Design Manager on 02 9265 9333 or email sydneyyoursay@cityofsydney.nsw.gov.au

Yours sincerely,

A handwritten signature in blue ink, appearing to read "Belinda", followed by a long, flowing horizontal line.

Belinda Graham
Delivery Manager



CITY OF SYDNEY 

Have your say

Improving Peace Park

We plan to upgrade Peace Park
and invite your feedback on the
proposed design.

Over the next 10 years, we're upgrading more than 60 parks across the City of Sydney, from small pocket parks to larger local parks.

Public parkland is a high priority for our residents, workers and visitors. This network of park upgrades will create better quality open spaces for everyone to enjoy, help keep our city cooler, and support biodiversity in our local areas.

You can view the proposed design and give feedback at cityofsydney.nsw.gov.au/park-playground-upgrades

Consultation closes at **5pm on Tuesday 11 August 2020.**

We also invite you to a briefing on the proposed design with the project team via a Zoom video call on **Tuesday 4 August from 6.45pm to 7.15pm**. Register to join this meeting at cityofsydney.nsw.gov.au/park-playground-upgrades by **5pm on Sunday 2 August**. We will provide you with more information to set up the video call.

For more information about the project, please contact Lucy Farley, Design Manager on **02 9265 9333** or email sydneyyoursay@cityofsydney.nsw.gov.au