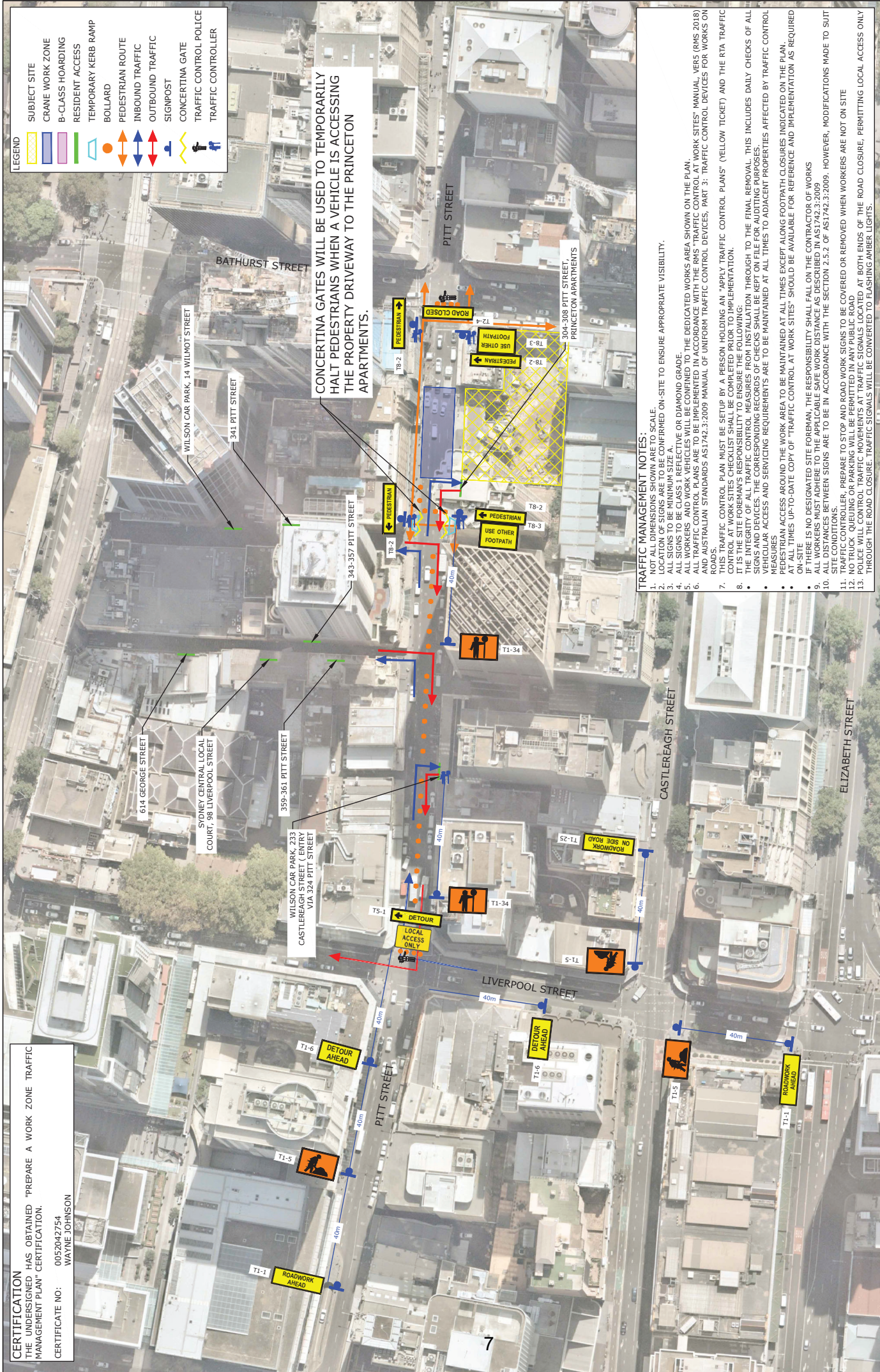
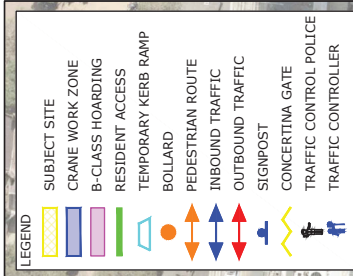


CERTIFICATION
 THE UNDERSIGNED HAS OBTAINED "PREPARE A WORK ZONE TRAFFIC MANAGEMENT PLAN" CERTIFICATION.
 CERTIFICATE NO: 0052042754
 WAYNE JOHNSON



CONCERTINA GATES WILL BE USED TO TEMPORARILY HALT PEDESTRIANS WHEN A VEHICLE IS ACCESSING THE PROPERTY DRIVEWAY TO THE PRINCETON APARTMENTS.

- TRAFFIC MANAGEMENT NOTES:**
- NOT ALL DIMENSIONS SHOWN ARE TO SCALE.
 - LOCATION OF SIGNS ARE TO BE CONFIRMED ON-SITE TO ENSURE APPROPRIATE VISIBILITY.
 - ALL SIGNS TO BE CLASS 1 REFLECTIVE OR DIAMOND GRADE.
 - ALL SIGNS TO BE CLASS 1 REFLECTIVE OR DIAMOND GRADE.
 - TRAFFIC CONTROL PLANS ARE TO BE IMPLEMENTED IN ACCORDANCE WITH THE RMS "TRAFFIC CONTROL AT WORK SITES" MANUAL, VES 5 (RMS 2018) AND AUSTRALIAN STANDARDS AS 1742.3:2009 MANUAL OF UNIFORM TRAFFIC CONTROL DEVICES, PART 3: "TRAFFIC CONTROL DEVICES FOR WORKS ON ROADS."
 - THIS TRAFFIC CONTROL PLAN MUST BE SETUP BY A PERSON HOLDING AN "APPLY TRAFFIC CONTROL PLANS" (YELLOW TICKET) AND THE RTA TRAFFIC CONTROL AT WORK SITES CHECKLIST SHALL BE COMPLETED PRIOR TO IMPLEMENTATION.
 - IF THERE IS NO DESIGNATED SITE FOREMAN, THE RESPONSIBILITY SHALL FALL ON THE CONTRACTOR OF WORKS.
 - ALL DISTANCES BETWEEN SIGNS ARE TO BE MAINTAINED AT ALL TIMES TO ADJACENT PROPERTIES AFFECTED BY TRAFFIC CONTROL MEASURES.
 - PEDESTRIAN ACCESS AROUND THE WORK AREA TO BE MAINTAINED AT ALL TIMES EXCEPT ALONG FOOTPATH CLOSURES INDICATED ON THE PLAN.
 - IF THERE IS NO DESIGNATED SITE FOREMAN, THE RESPONSIBILITY SHALL FALL ON THE CONTRACTOR OF WORKS.
 - ALL WORKERS MUST ADHERE TO THE APPLICABLE SAFE WORK DISTANCE AS DESCRIBED IN AS 1742.3:2009.
 - ALL DISTANCES BETWEEN SIGNS ARE TO BE MAINTAINED AT ALL TIMES TO ADJACENT PROPERTIES AFFECTED BY TRAFFIC CONTROL MEASURES.
 - TRAFFIC CONTROLLER, PREPARE TO STOP AND ROAD WORK SIGNS TO BE COVERED OR REMOVED WHEN WORKERS ARE NOT ON SITE.
 - NO TRUCK QUEUING OR PARKING WILL BE PERMITTED IN ANY PUBLIC ROAD.
 - TRAFFIC SIGNALS TO BE CONVERGED TO FLASHING AMBER LIGHTS AT BOTH ENDS OF THE ROAD CLOSURE, PERMITTING LOCAL ACCESS ONLY THROUGH THE ROAD CLOSURE. TRAFFIC SIGNALS WILL BE CONVERTED TO FLASHING AMBER LIGHTS.

REV. A	ISSUE FOR DISCUSSION	DESCRIPTION	DRAWN	CHECK	APPD	DATE
			RW	SB	WJ	17/08/20
PROJECT: PITT STREET STATION						
TITLE: TRAFFIC CONTROL PLAN SOUTH SITE						
DWG No. 19433CAD016			FIGURE 2			
DATE STAMP: 17 AUGUST 2020			SCALE: NTS			
PROJECT No. 19433			REV. NTS		REV. A	