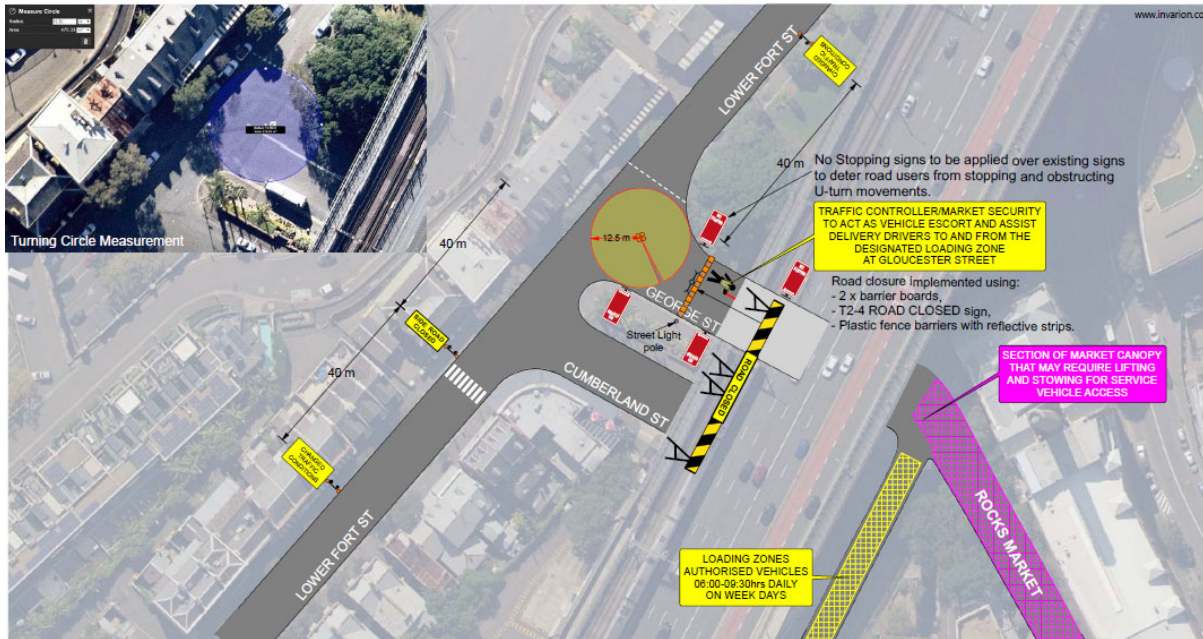
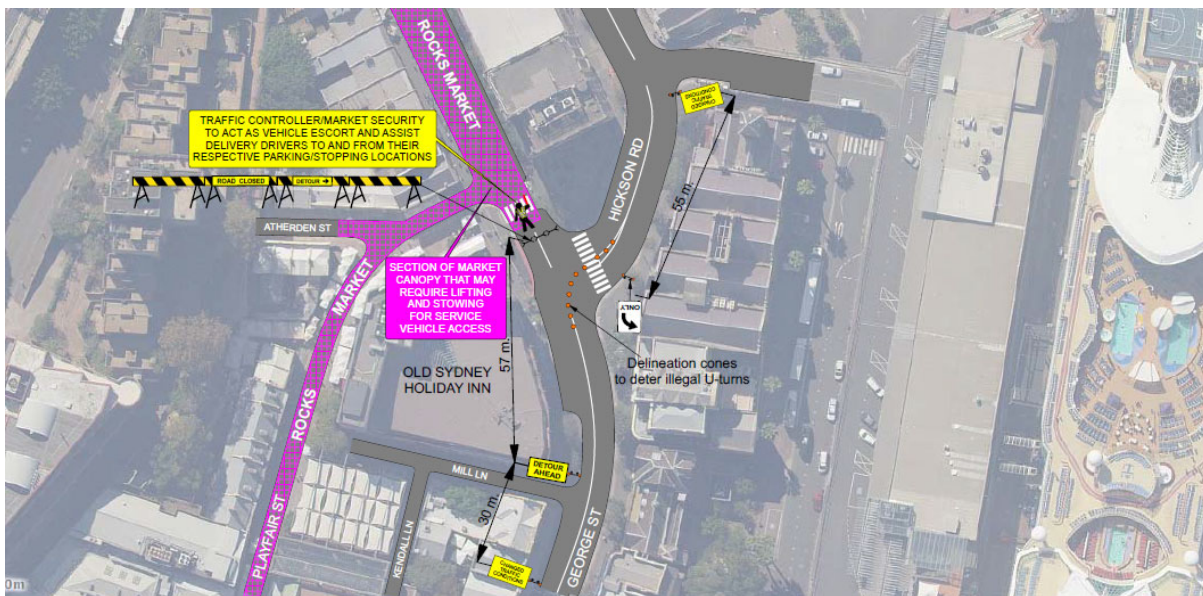


LOCATION 1 - George St North at Lower Fort St



LOCATION 2- George St North at Hickson Rd



Private vehicles - General road users will be impacted by the closure by having increased travel times. The below images indicate projected travel times for normal alternative / detour route e.g. 1min vs 6min, which is seen as acceptable under the Assure Traffic Management Plan Rocks Market Weekday Operations - PMNSW.

