

# BOTANY ROAD

REPLACE EXISTING KERB WITH ROLLBACK PROTECT WITH HERSEY KERBS

BUS SHELTER TO BE RELOCATED OUTSIDE 6.4M ZONE

EXISTING STREET LIGHT TO REMAIN, PROTECT WITH HERSEY KERBS

2.2M WIDE FOOTPATH UNDER ESCASS WITH HERSEY KERBS SCAFFOLDING OVER

VARIABLE WIDTH CONSTRUCTION SLIP LANE

ALL SERVICES/FITS/SLDS TO BE LOCATED OUTSIDE 6.4M ZONE

PRIVATE POLE TO BE RELOCATED

CONCRETE DRIVEWAY

GRATE

VARIABLE 3.4 TO 6.4M ZONE FOR CONSTRUCTION SLIP LANE

2.6M ZONE FOR B CLASS HOARDING WITH 2.2M ZONE FOR PEDESTRIAN ACCESS

GRATE

BITUMEN

BITUMEN

BITUMEN

BITUMEN

BITUMEN

CONCRETE DRIVEWAY

BITUMEN

BRICK

CONCRETE DRIVEWAY

BITUMEN

BITUMEN

BITUMEN

BITUMEN

BITUMEN

CONCRETE DRIVEWAY

BITUMEN

BRICK

GATE

GATE

GATE

GATE

GATE

GATE

GATE

GATE

GATE

GATE

GATE

GATE

GATE

GATE

GATE

GATE

GATE

GATE

GATE

GATE

GATE

GATE

GATE

GATE

GATE

GATE

GATE

GATE

GATE

GATE

GATE

GATE

GATE

GATE

GATE

GATE

GATE

GATE

GATE

GATE

GATE

GATE

GATE

GATE

GATE

GATE

GATE

GATE

GATE

GATE

GATE

GATE

GATE

GATE

GATE

GATE

GATE

GATE

GATE

GATE

GATE

GATE

GATE

GATE

GATE

GATE

GATE

GATE

GATE

GATE

GATE

GATE

GATE

GATE

GATE

GATE

GATE

GATE

GATE

GATE

GATE

GATE

GATE

GATE

GATE

GATE

GATE

GATE

GATE

GATE

GATE

GATE

GATE

GATE

GATE

GATE

GATE

GATE

GATE

GATE

GATE

GATE

GATE

GATE

GATE

GATE

GATE

GATE

GATE

GATE

GATE

GATE

GATE

GATE

GATE

GATE

GATE

GATE

GATE

GATE

GATE

GATE

GATE

GATE

GATE

GATE

GATE

GATE

GATE

GATE

GATE

GATE

GATE

GATE

GATE

GATE

GATE

GATE

GATE

GATE

GATE

GATE

GATE

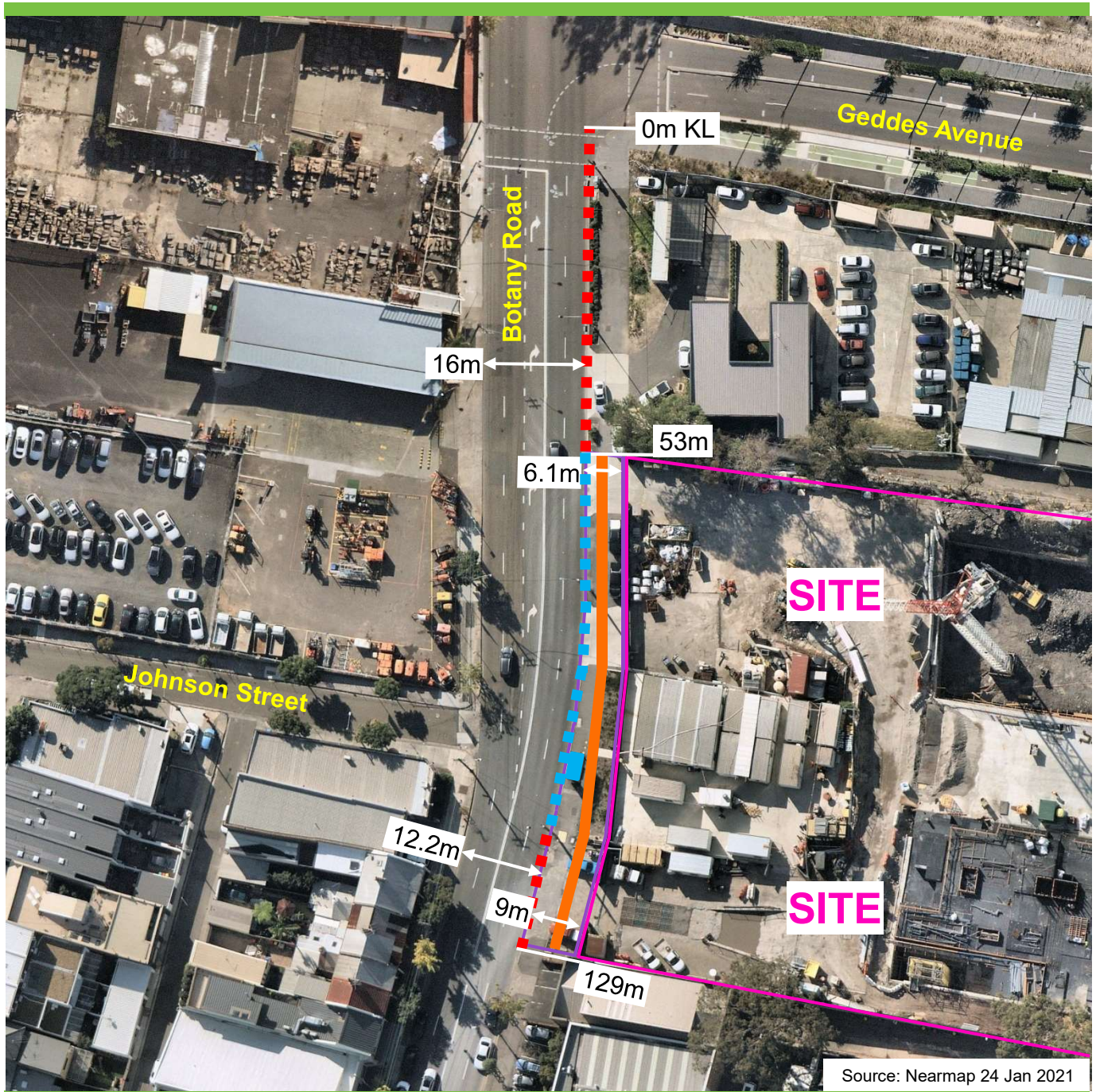
GATE

SK01 - GENERAL ARRANGEMENT PLAN  
 PROPOSED SLIP LANE FOR THE CONSTRUCTION OF:  
 601-609 BOTANY ROAD, ZETLAND  
 GEORGE CANLIS  
 LATERAL ESTATE & WATERSIDE CONSTRUCTIONS  
 27.11.2020

HINCHCLIFFE STREET

# Proposal

## Botany Road, Zetland Proposed parking changes



### Existing

- ■ ■ "No Parking 7am-9am Mon-Fri"  
"Clearway 3pm-7pm Mon-Fri"
- ■ ■ "Bus Zone"  
"Clearway 3pm-7pm Mon-Fri"
- Bus Shelter

### Proposed

- "Works Zone 7.30am-5.30pm Mon-Fri,  
7.30am-3.30pm Sat"  
"No Stopping all other times"
- Site
- Works Zone and B-Class Hoarding