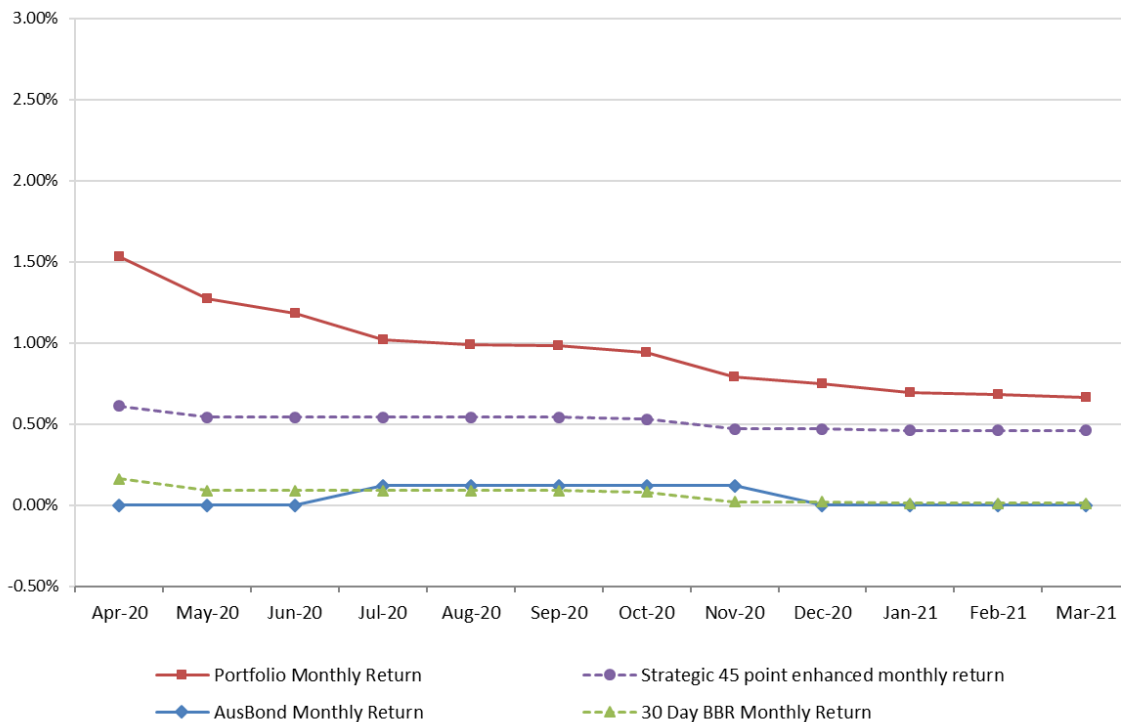


Attachment B

**Investment Performance
as at 31 March 2021**

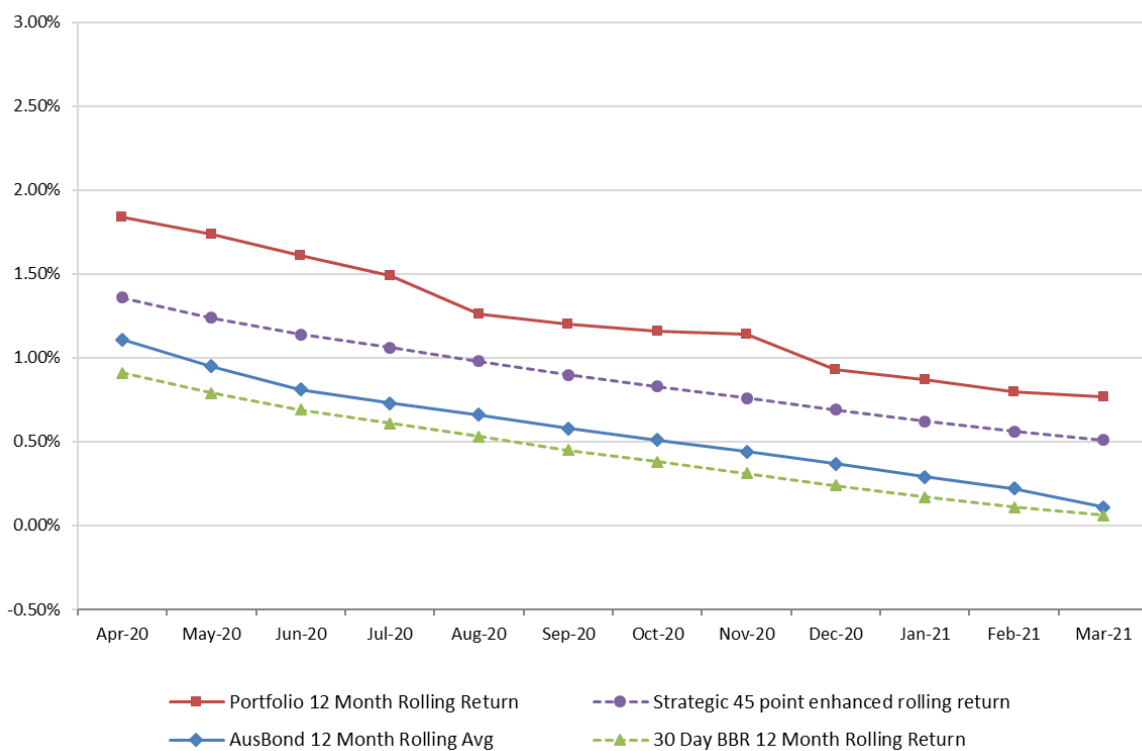
Monthly Results

Actual Portfolio vs Strategic Enhanced Benchmark vs AusBond Benchmark vs 30 Day BBR Benchmark
March 2021

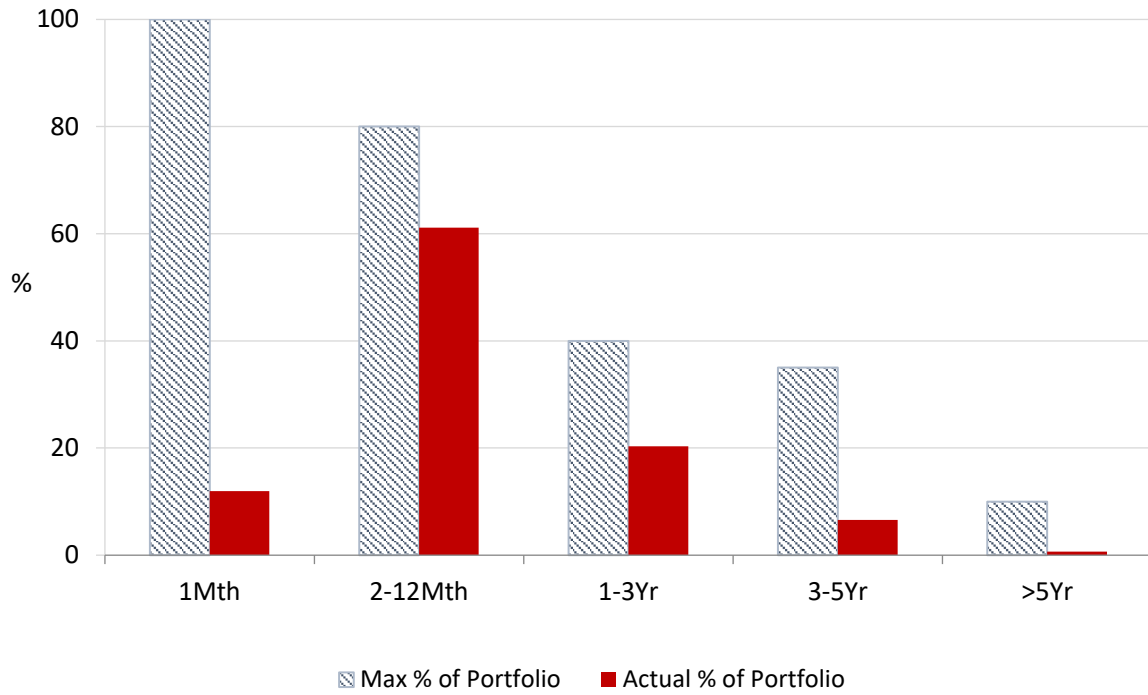


12 Month Rolling Averages

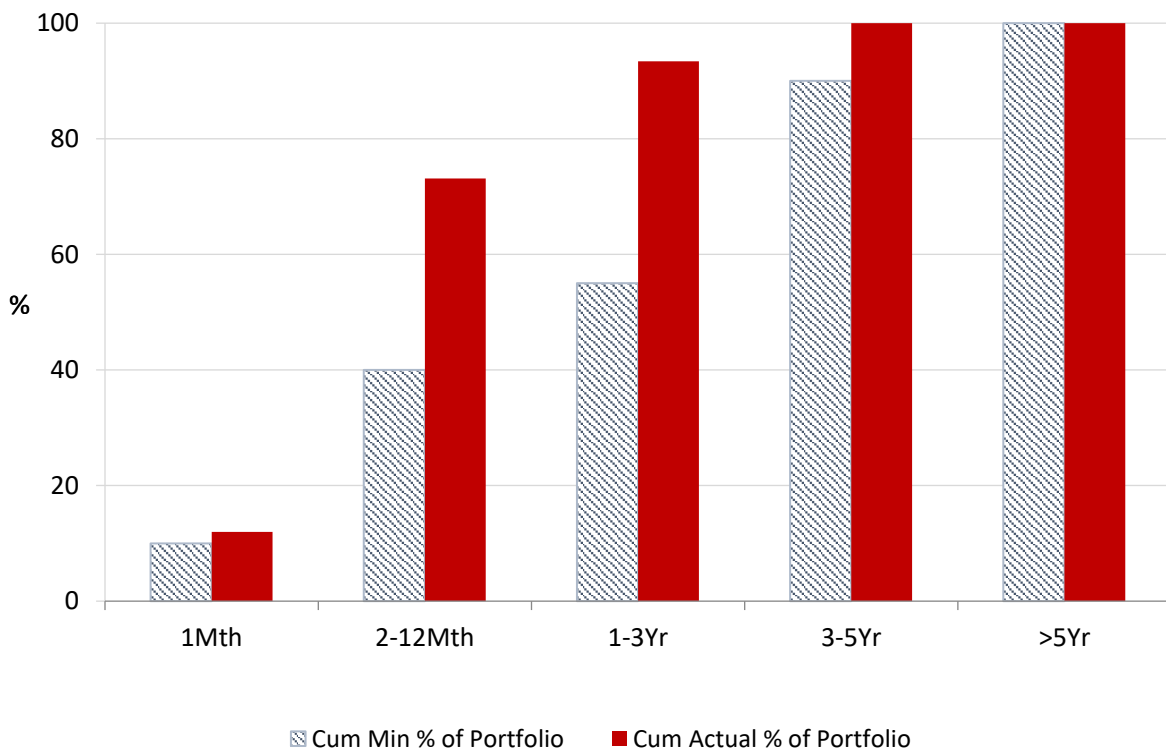
Actual Portfolio vs Strategic Enhanced Benchmark vs AusBond Benchmark vs 30 Day BBR Benchmark
March 2021



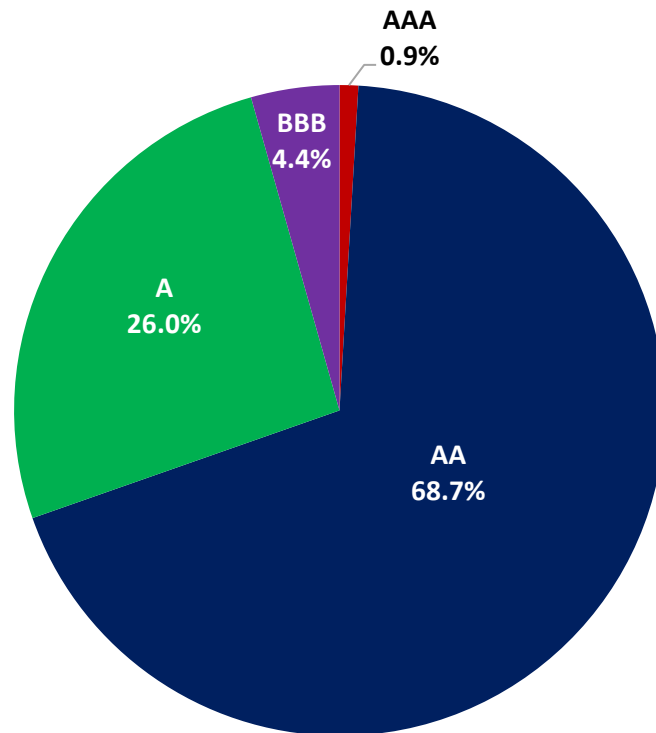
Portfolio Liquidity - Maximum Allowances as at 31 March 2021



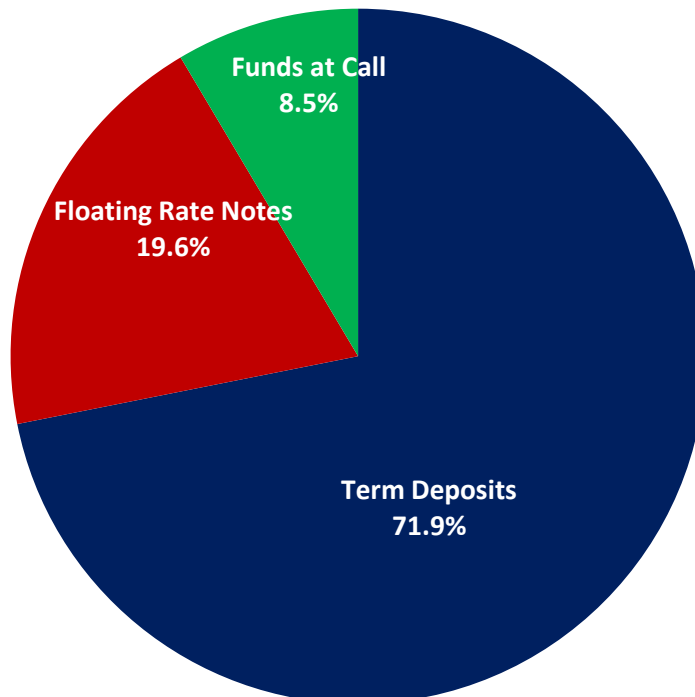
Portfolio Liquidity - Minimum Allocations as at 31 March 2021



Risk Profile as at 31 March 2021



Investment Product Profile as at 31 March 2021

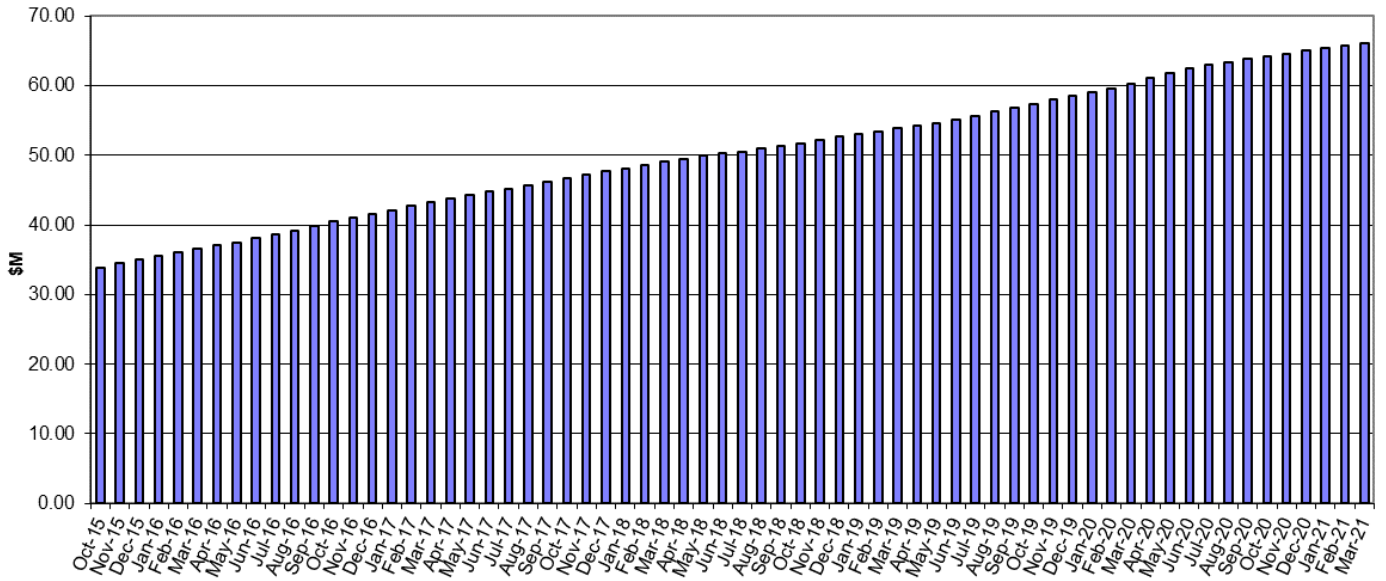


INVESTMENT AND CASH DISTRIBUTION BY FINANCIAL INSTITUTION

as at 31 March 2021

Institution Category	Financial Institution	Amount \$M	Financial Inst. %	Institution Cat. %
Australian Big 4 Bank (and related institutions)	ANZ Bank	28.0	4.3	
	Commonwealth Bank	211.3	32.2	
	National Aust Bank	70.7	10.8	
	Westpac Banking Corporation	135.8	20.7	
Big 4 Total		445.8		67.9
Other Australian ADIs and Australian subsidiaries of foreign institutions	Bank Australia Limited	5.0	0.8	
	Bank of China	4.5	0.7	
	Bank of Queensland	39.0	5.9	
	Bendigo & Adelaide Bank	15.0	2.3	
	Credit Union Australia Ltd	14.3	2.2	
	ME Bank	49.5	7.5	
	Suncorp Bank	19.6	3.0	
	Macquarie Bank Ltd	49.0	7.5	
	Northern Territory Treasury Corporation	10.0	1.5	
	Newcastle Permanent Building Society	5.0	0.8	
Other ADI Total		210.9		32.1
Grand Total		656.7	100.0	100.0

Cumulative Outperformance over AusBond Benchmark - 2015-2021



Cumulative Outperformance over 30 Day BBR Benchmark - 2015-2021

