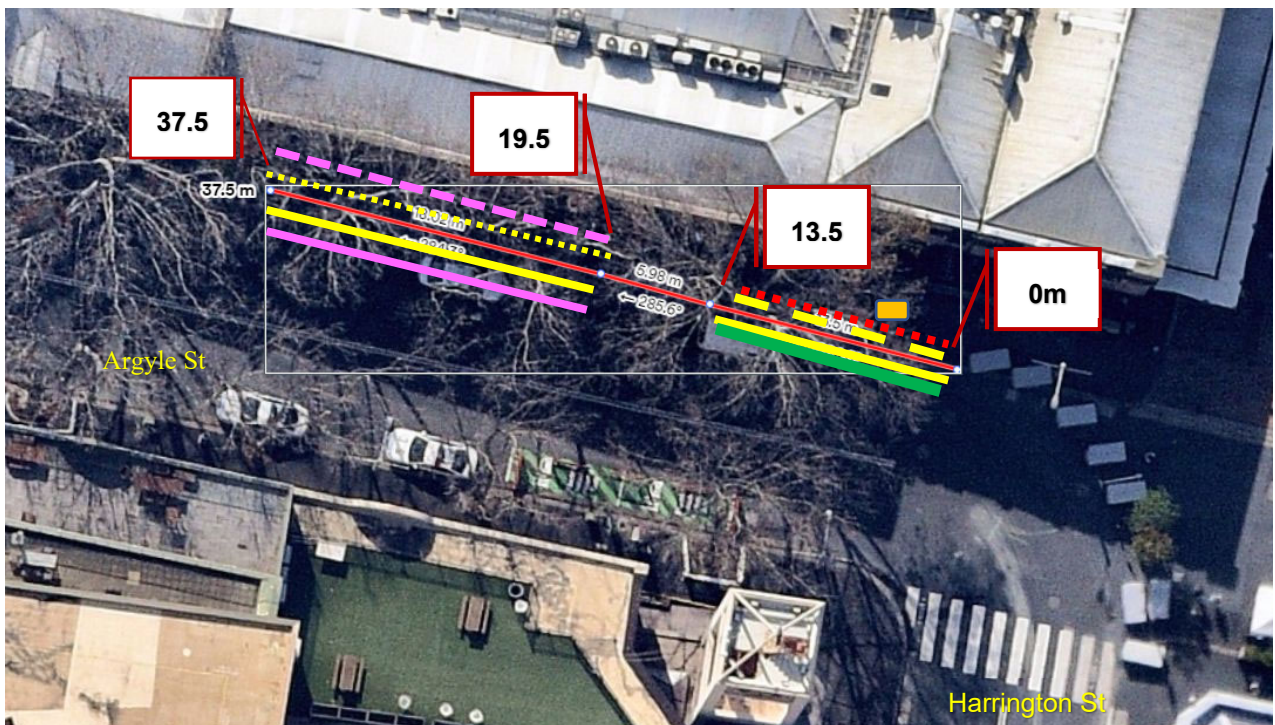


Notification of changes to PMNSW use of area – Place Management NSW

Argyle St (North) Sydney - Proposed parking change that is currently, Place Management NSW – Loading Zone 7am - 5pm between 0m metres and 13.5 metres, No Stopping At Other Times between 0 metres and 13.5 metres, Loading Zone 5am -12pm between 19.5 metres and 37.5 metres, Taxi Zone between 19.5 metres and 37.5 metres to create additional parking opportunities for surrounding stakeholders and visitors.

Overhead Street Photo



Existing	Proposed
No Stopping	No Stopping
No Stopping Sat Other Times	
Loading Zone 5am – 12pm	Loading Zone L/Z Meter 5am - 6pm Mon-Sun
Loading Zone 7am – 5pm	2 Hour Meter Parking 6pm- 10pm Mon – Sun, 8am – 10pm Public Holidays
Taxi Zone	Taxi Zone Other Times
	Ticketless Parking Meter Machine

12-20 Argyle Street Parking Changes Proposal

Street Level Photo

