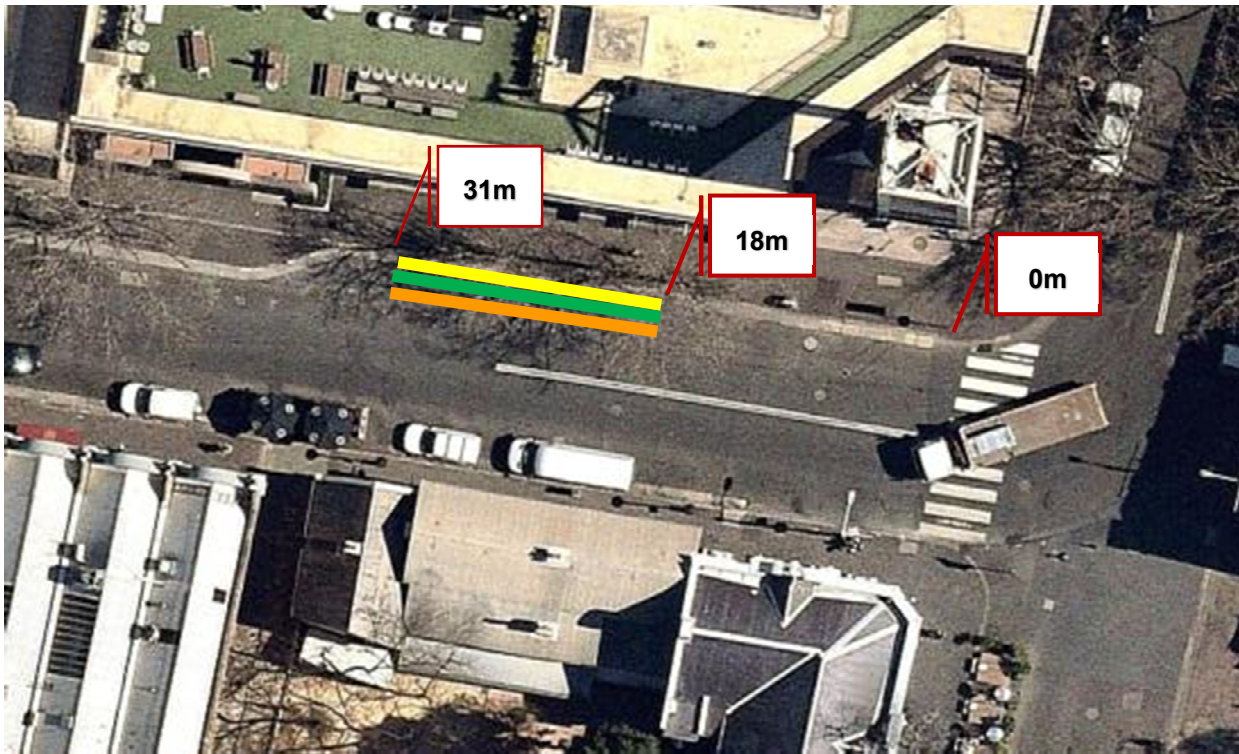








Notification of changes to PMNSW use of area – Place Management NSW

Harrington Street (west side of street) Sydney - Proposed parking change that is currently, Place Management NSW – Loading Zone & 4Hr Parking between 18 metres and 31 metres south of Argyle Street to create additional parking opportunities for surrounding stakeholders and visitors.

Overhead Street Photo



Existing		Proposed	
	Loading Zone Meter 5am – 10am Mon – Sun,		Loading Zone Meter 5am – 10am Mon – Sun,
	2 Hour Parking Meter 4pm – 10pm Mon-Sun,		2 Hour Parking Meter 4pm – 10pm Mon-Sun,
			Kiss and Ride 10am – 4pm Mon to Sun 

Street Level Photo



53 Harrington Street Parking Changes Proposal

