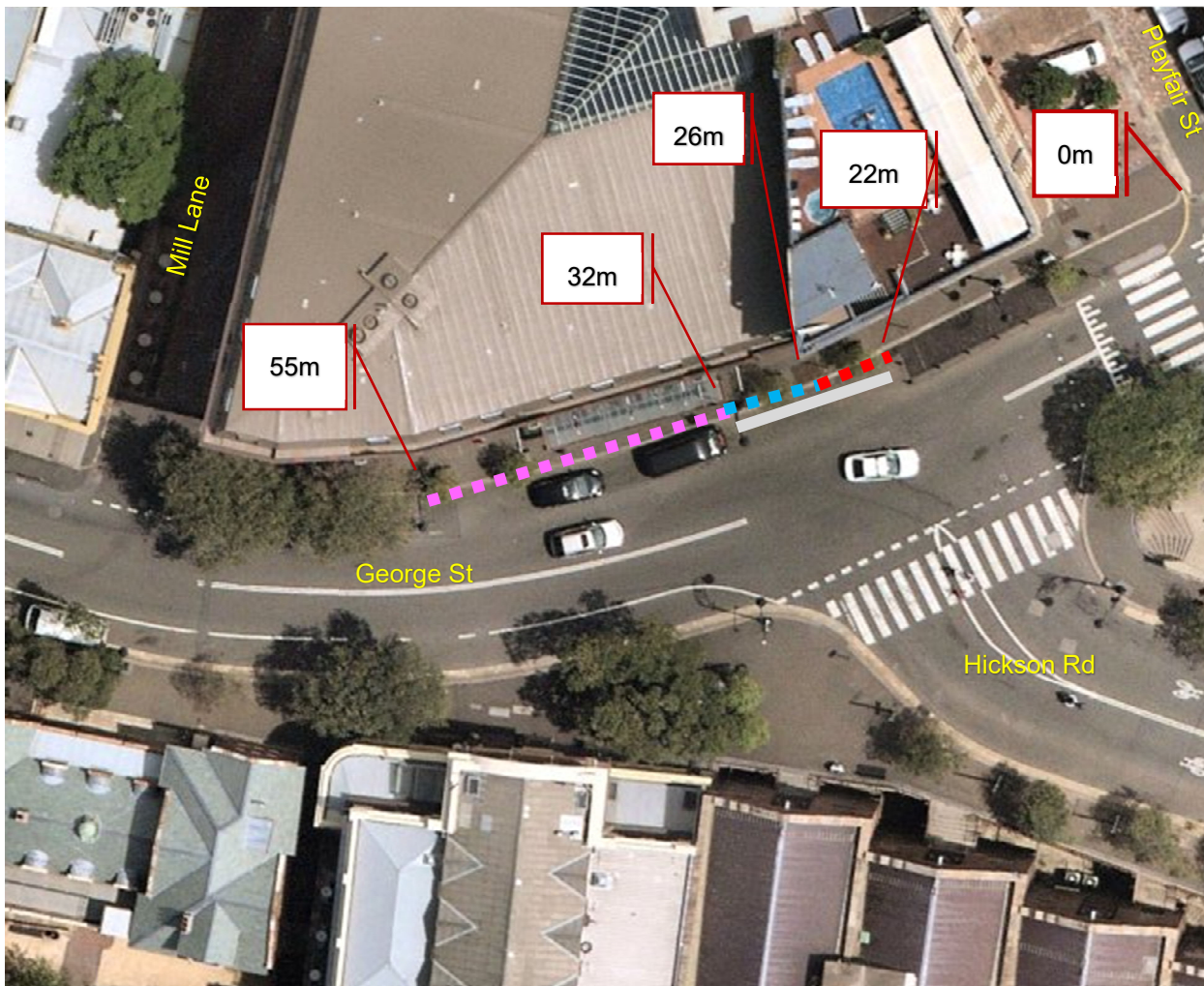


Notification of changes to PMNSW use of area – Place Management NSW

55 George St (West) Sydney - Proposed parking change that is currently, Place Management NSW - 15 min Parking between 26 metres and 32 metres and No Stopping between 22 and 26 metres conversion to kiss & ride area for port and hotel operations.

Overhead Street Photo



Existing	Proposed
Taxi Zone	Taxi Zone
15 Minute Parking	Kiss and Ride Area – 24/7

55 George Street Parking Changes Proposal

Existing	Proposed
----------	----------

■ ■ ■ ■ ■ No Stopping

Street Level Photo

