

Attachment B

<p>Information on Local Planning Panel Expert Members</p>
--

Curriculum Vitae: Paul Berkemeier LFRAIA BSc.Arch, B.Arch, M.Arch

Qualifications

Master in Architecture Harvard University '83
Bachelor of Architecture (Hons) University of Sydney '75
Bachelor of Science (Architecture) University of Sydney '73

Career Summary

2017 – present	Senior Consultant, Berkemeier / Trousdale / Border Architecture Studio.
1988 – present	Director Paul Berkemeier Architect Pty Ltd.
1985 – 1988	Associate Director, Denton Corker Marshall.
1983	Architect, Gauchat Associates, Cambridge MA.
1973 – 1985	Commonwealth Department of Housing and Construction.

Professional Affiliations

1975 – present	Member Australian Institute of Architects (AIA), Life Fellow since 2010
2013 – 2014	National President, AIA
2009 – 2015	National Councillor, AIA
2006 – 2009	State Councillor, AIA
1980 - present	Registered Architect NSW – registration number 4017

Advisory & Related Roles

2020 – present	Member, State Design Review Panel
2020 – present	Assessor, NSW ARB Portfolio Program of Assessment.
2019 – present	Member, Local Planning Panel, City of Sydney.
2019 – present	Member, State Design Review Panel (pilot), Tweed Shire nominee.
2018 – present	Member, Design Advisory Panel Residential Subcommittee, City of Sydney.
2018 – present	Member, Local Planning Panel, Parramatta City Council.
2018 – present	Member, Design Review Panel, The Hills Shire.
2014 – present	Member / Chair of several Selection Panels for City of Sydney Competitive Design Alternative projects.
1989 – present	Ten National Accreditation Panels to Architecture Programs, six as Chair.
2008 – 2013	External Examiner / Program Reviewer to UWA, Uni SA, Newcastle & Canberra.
1995 – 2004	Trustee Historic Houses Trust of NSW, Deputy Chair 2001 – 2004.
2014	Chair AIA National Awards Jury
2013 – 2018	Australian representative to the Canberra Accord Council, Mexico, USA & UK.
2010	International assessor to CA Validation of Korean Architecture Accreditation
2003 – 2004	Member / Chair AIA NSW Awards Jury.

University Teaching

2018 – 2020	Course coordinator, S1 3 rd year design studio at Sydney University.
2009 – 2011	Course coordinator – Professional Practice University of Sydney
2009 – 2012	Visiting / Adjunct Professor University of Sydney
1986 – 2009	Design Studio teacher / coordinator at Sydney University, UNSW and UTS.

Major Awards & Competitions

1983 – 2011	Ten AIA National & State Architecture Awards, including the Lachlan Macquarie Award & National Commercial Building Award.
2006	First place East Darling Harbour International Design Competition – with Hill Thalys and Jane Irwin Landscape Architecture.
2000 – 2007	Winner of several design competitions, including Shear Outback, Murwillumbah Museum, Kia Ora Homestead, Tweed Heads Museum.
1981	Commonwealth Post Graduate Scholarship for study at Harvard GSD.



profile

Tony Caro is the principal of Tony Caro Architecture Pty Limited. He graduated from NSWIT with First Class Honours, University Medal and Byera Hadley Travelling Scholarship in 1980, completing post-graduate studies (M.B.Env.) at UTS in 1995.

An associate of the renowned architectural practice Harry Seidler and Associates for twelve years, Tony contributed to the design and delivery of many of the practices signature city and urban architectural projects.

Tony Caro Architecture was formed in 1995 as a small, studio-based practice and has extensive experience in architecture, master planning, interior design and urban design. In 2015 the practice was re-structured to focus on independent expert advisory services to the public and private sectors in the areas of urban planning, urban design and architecture.

Director/Principal:

Tony Caro Architecture

Relevant Qualifications:

Bachelor of Architecture
(1st Class Hons)+Medal,
UTS 1980.

Master of the Built
Environment, UTS 1995

Registration:

Architects Accreditation
Council of Australia
(AACA) Reg.No. 4578

Professional Associations:

Fellow Australian
Institute of Architects
Mem.No. 18524

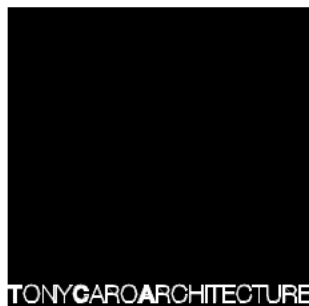
Tony is currently a member of the Sydney Metro Design Review Panel, Sydney Metro Design Advisory Panel, NSW State Design Review Panel, North Sydney and City of Sydney Local Planning Panels and the City of Sydney Design Advisory Panel (Residential Sub-Committee). He is a member of and chairs The Hills Shire and Canada Bay/Strathfield Council Design Review Panels and is the Independent Expert adviser to The Hills Shire Design Excellence Panel. Tony is also a regular participant and chair of competitive Design Excellence processes, representing both local councils and private sector clients.

key skills

- Extensive experience in conceptual and strategic thinking for briefing and making successful integrated urban projects.
- Extensive experience in design of city workplace environments and multi-unit housing, from the scale of the terrace house to high-density urban projects. The intense commercial focus of the sector brings particular design quality challenges for architects in the areas of affordability, amenity, sustainability and design excellence.
- Ability to work collaboratively on large and complex projects within team environments, offering broad experience in advising and consulting to the public and private sectors.
- Extensive experience in advisory and design review processes for large and complex projects to local councils and state agencies (DPIE, TfNSW)

selected urban design projects (to 2015)

- Circular Quay Planning Study (Sydney City Council) 1998
- Sydney Olympic Park Urban Core 2030 Master Plan 2005
- Sydney Town Hall Square Master Plan (Sydney City Council) 2009-2018
- Hobart Waterfront Master Plan (Tasmanian State Govt) 2010
- Pitt Street and Mall Revitalisation (Sydney City Council) 2012
- Director Barangaroo South Urban Design Strategy (Lend Lease) 2012
- Barangaroo South Retail Waterfront Development 2014
- NWRL Kellyville Station Master Plan (TfNSW) 2013
- Barangaroo South T1 Podium (Lend Lease) 2015



selected multiple housing projects (to 2016)

- Montpellier Estate Housing Stage 3, Manly (Lend Lease) 2011
- Silk Jacksons Landing (Lend Lease) 2013
- VSQ2 Victoria Park Master Plan/Residential Development (Meriton) 2013
- Montpellier Estate Housing Stage 4, Manly (Lend Lease) 2013
- Tribeca Rosebery, (Meriton) 2014
- Illume Residential Development, Little Bay (Charter Hall) 2014
- Altitude, Parramatta (Meriton) 2015
- Rositano Master Plan/Residential Development (Dyldam) 2016

consulting and advisory services

- Sydney Metro Design Advisory Panel (West+Greater West) 2021
- Member NSW State Design Review Panel 2019-present
- Sydney City Council Local Planning Panel member 2019-present
- Chair Hills Shire NW Metro Priority Precinct DRP 2019-present
- Member City of Sydney DAP (Residential Subcommittee) 2018-present
- Member Landcom Design Advisory Panel 2018–2020
- Sydney Metro Design Review Panel (City+South West) 2016 – present
- Co-Chair Canada Bay/Strathfield Councils DRP 2017- present
- The Hills Shire DEP External Expert Adviser 2017 - present
- Member North Sydney Local Planning Panel 2018 - present
- Member IHAP Expert Advisory Panel Pool 2018 - present
- Council Design Competitions - Chair+Panellist (various) 2012 – present
- Chair Sutherland Architecture Review Advisory Panel 2013 – 2018
- Member/Co-chair Parramatta Design Excellence Advisory Panel 2012-17
- Member North Sydney Council Design Excellence Panel 2013 – 2017
- Barangaroo Delivery Authority Design Adviser 2012- 2016
- Member Urban Growth Design Directorate 2016 – 2017
- Chair AIA NSW Chapter Awards program (NSW) 2014
- Parramatta Council SEPP65 Design Panel 2004 - 2012

competitions + awards (to 2015)

- Design Excellence Competition Winner Parkes St Parramatta 2015
 - AIA Tasmanian Chapter Urban Design Award Princes Wharf 2013
 - AIA National Architecture Commendation Pitt Street Mall 2013
 - AIA NSW Chapter Architecture Award Silk Apartments 2013
 - AIA NSW Chapter Architecture Award – Pitt Street Mall 2013
 - Design Excellence Competition Winner McEvoy St Waterloo 2013
 - Design Excellence Competition Winner ODea Street Waterloo 2012
 - Design Excellence Competition Winner – Church St Parramatta 2011
 - AIA NSW Chapter Architecture Small Projects Award – SOP 2010
 - Winner Hobart Waterfront International Design Competition 2006
 - AILA NSW Award - Darlinghurst Rd Kings Cross 2006
 - National Interior Design Award – LendLease HQ Childcare Centre 2005
 - AIA NSW Chapter Award –Broughton College Students Facility 2004
 - Winner City of Sydney Sydney Observatory Design Competition 2004
 - AIA NSW Chapter Award –Campbelltown Primary School Library 2002
 - Winner Sydney Olympic Park 2000 Games Interpretation Project 2001
 - Winner Sydney Town Hall International Design Competition (CoS) 2000
 - Winner RTA Pedestrian Bridges Competition 2000
 - Finalist, Andrew Boy Charlton Pool Competition for City of Sydney 1999
 - Highly Commended Circular Quay International Design Competition 1995
 - RAlA Byera Hadley Travelling Scholarship 1980
-



RON EDGAR

FORM architects (aust) pty ltd
RON EDGAR B Arch FAIA nswarb 5022





FORM architects is a team of architects, planner and technicians, who work with associated historians and archaeologists, with the objective of creating an innovative architectural consultancy with a focus on contemporary design – especially in contexts with culturally significant sites and adaptive reuse.

FORM was established in 1992. Between 2008 and 2010 the practice merged with HBO+EMTB and was successful in procuring projects from the SRA, Resitech, Defence Maintenance Management and Brookfield Multiplex as well as a broader range of residential, educational and heritage projects. These included procuring and managing the design and documentation of Holsworthy Railway Station Commuter Carpark and several Seniors Living and Special housing projects. In 2009 I worked with Brookfield Multiplex to procure the BER project for Western Sydney and directed the documentation and certification of 68 schools as well as authoring 16 Heritage Assessments.

FORM has a portfolio of successful projects in the areas of;

- Conservation planning and restoration,
- Adaptive reuse of significant and redundant buildings;
- Individual contemporary housing;
- Individual, medium density and high rise housing;
- Serviced apartments, guest houses and hotels;
- Student housing;
- Commercial buildings and interiors; and
- Educational and scientific building.

We have highly developed verbal and graphic communication skills, largely as a result of our role as heritage consultants and the necessity to communicate with a broader range of consultants and authorities than in the general architectural practice.

FORM has considerable experience in working within multidisciplinary design teams and as a result have worked in consultation with all disciplines of engineering and service consultants, urban designers, planners, archaeologists, historians and archivists.

CURRICULUM VITAE

RON EDGAR (B ARCH FAIA)

Principal/Director, FORM architects



I bring over 45 years' experience in Architecture and 34 years as a director in my own practice, first establishing ORDER architects with then partner Kim Crestani in Parramatta in 1986, and then FORM architects in 1992 - also in Parramatta. FORM architects specialises in architecture related to culturally significant or sensitive sites.

I have served as a consultant to all levels of government and have represented the Australian Institute of Architects on international architectural bodies such as ARCASIA, UIA (Union Internationale des Architectes) and the World Heritage Committee. Ron also holds longstanding roles as an advisor to, (Canterbury) Bankstown City Council (until 2015) and Holroyd Council (now Cumberland Council) from 1992 to 2020.

I am, currently, an expert member of the Local Planning Panels of Blue Mountains City Council and the Municipality of Hunters Hill. I am, also, chair of Design Excellence Panels at

Cumberland and Hornsby Councils.

I am a former NSW Chapter Councillor of the Australian Institute of Architects and, also former, chair of AIA NSW Chapter committees including Architectural Practice and Heritage Committees as well as AIA National Heritage Committee and the Australian Parliament Heritage Advisory Panel. During this time, I was a member, then chair, of the Australian Government National Cultural Heritage Forum, representing the combined national stakeholder heritage organisations.

Additionally, I have represented the AIA as co-director of the Union Internationale' des Architectes (UIA) Heritage Committee for Region IV (Asia Pacific Region) from 2005 to 2014) and represented the UIA at the UNESCO World Heritage Committee meeting in 2007 in Christchurch NZ. FORM is, also, one of the practices retained as a panel of consultants to the Australian War Memorial.

Qualifications & Associations

Registered Architect NSW No. 5022

Member of Architecture, NSW Institute of Technology (now UTS)

Former Australian Institute of Architects (FAIA)

Professional Experience

2020	Present	Hornsby Shire Design Excellence Panel (Chair)	1992 - 2020	Heritage Advisor, Holroyd City Council and member of the Holroyd (Cumberland) Heritage Committee.
2019	Present	Cumberland Council Design Excellence Panel (Chair)		
2018	Present	Blue Mountains Council Local Planning Panel Hunters Hill Council Local Planning Panel	2005 - 2009	Director (Heritage), UIA Region IV (Asia Pacific) (UIA Union Internationale des Architectes)
2015	Present	Australian War Memorial Consultant Panel	2008	Delegate to UIA General Assembly, Turin, Italy
2010	Present	Principal/Director, FORM architects (aust) pty ltd	2007	UIA Representative UNESCO World Heritage Committee, Christchurch NZ
2008 - 2010		Director, HBO+EMTB Heritage pty ltd	2000 - 2019	NSW Architects Registration Board Examiner
1992 - 2008		Principal/Director, FORM architects (aust) pty ltd		

Prior to establishing FORM my career trajectory included working on a broad range projects at: -

- Lipson Kaad & Fotheringham;
- Reuben Lane & Associates;
- Davenport Campbell;
- Buckland Druce & Rieth;
- Kerr Smith & Malone;
- Jackson Teece Chesterman & Willis;
- Lawrence Nield & Partners;
- John Bruce & Partners;
- Kerr Thompson & Malone;
- ORDER architects;
- Altona Architects Group.

I established FORM architects as a team of architects, archaeologists, and technicians with the objective of creating an innovative architectural consultancy with a focus on contemporary design – especially in contexts with culturally significant sites and adaptive reuse.

Since establishing FORM I have worked on projects with several practices including AJ+C and HASSELL. Currently we collaborate with PTW, FJMT and Architectural Projects.

Between 2008 and 2010 the practice merged with HBO+EMTB and I was successful in procuring projects from the SRA, Resitech, Defence Maintenance Management and Brookfield Multiplex as well as a broader range of residential, educational and heritage projects.

These included procuring and managing the design and documentation of Holsworthy Railway Station Commuter Carpark and several Seniors Living and Special housing projects. In 2009 I worked with Brookfield Multiplex to procure the BER project for Western Sydney and directed the documentation and certification of 68 schools as well authoring 16 Heritage Assessments.

I have extensive experience with State and Local Government planning policies through my role as a member – and independent Architect – of the Bankstown City Council Major Projects Review Panel (2006 - 2015), as Heritage Advisor to Holroyd City Council (now Cumberland since 1992, and acting as expert witness at NSW Land & Environment Court preparing objections for individuals and communities impacted by proposed developments and, successfully, defending projects of our own and designed by other architects.

I have a portfolio of successful projects in the areas of;

- Serviced apartments, guest houses and hotels;
- Individual, medium density and high rise housing;
- Individual contemporary housing;
- Student housing;
- Conservation planning and restoration;
- Adaptive reuse of redundant buildings;
- Commercial buildings and interiors; and
- Educational and scientific building.

I have highly developed verbal and graphic communication skills, largely as a result of my role as a heritage consultant, expert witness, panel member and the necessity to communicate with a broader range of consultants and authorities than in the general architectural practice. I have considerable experience in working within multidisciplinary design teams and as a result have worked in consultation with all disciplines of engineering and service consultants, urban designers, planners, archaeologists, historians and archivists.



PROJECT EXPERIENCE

FORM has been involved in the design and documentation of individual residences, alterations and additions, dual occupancy and adaptability reuse projects, including:



RESIDENTIAL & SENIORS' LIVING

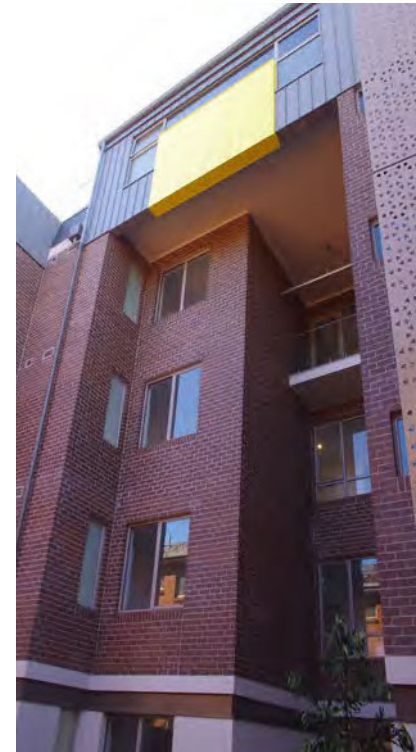
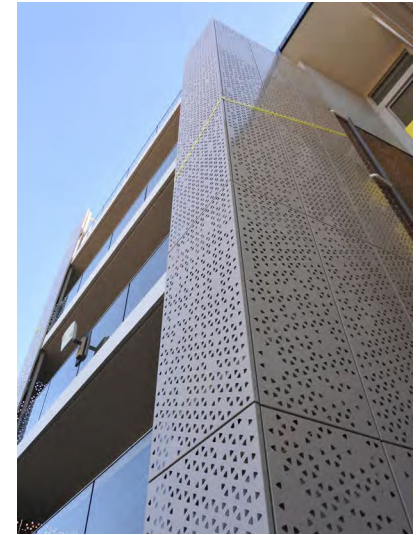
MANDALONG APARTMENTS

27 GEORGE STREET & 32 ENFIELD STREET, MARRICKVILLE NSW

Client: **MILLERCLARKE PTY LTD**

Role: ARCHITECT & HERITAGE CONSULTANT

FORM was responsible for the preparation of documentation for a high-density residential development that was responsive for housing demands within the Inner-West Sydney. The proposal comprises of two residential blocks that address George Street and Enfield respectively. The two blocks are joined by a communal garden. The design of the dual aspect blocks aims to maximise amenity by taking advantage of natural ventilation and solar penetration.



117 BOWDEN STREET

117-119 BOWDEN STREET, MEADOWBANK NSW

Client: **JAMES ST NO.2 PTY LTD**
BOWDENS GROUP AUSTRALIA PTY LTD

Role: Architect & Heritage Consultant

FORM was commissioned to develop the design and produce documentation for the development application up to construction stage and contract administration of a mixed-use development for this project.



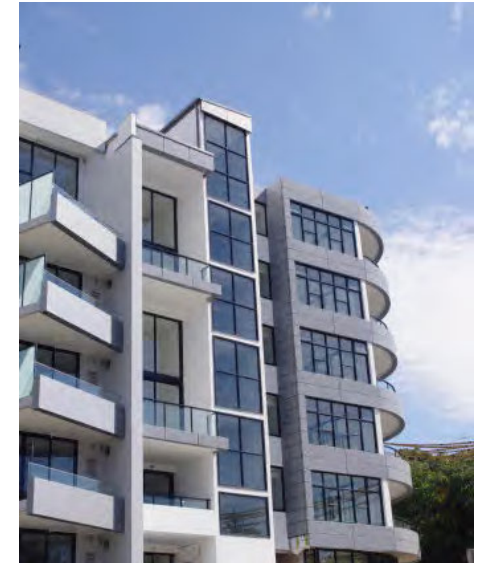
MEADOWBAY APARTMENTS

115 BOWDEN STREET, MEADOWBANK NSW

Client: **JAMES ST NO.2 PTY LTD**
**AUSLON PROPERTY GROUP PTY LTD C/O PROFILE-
PROJECT MANAGEMENT**

Role: ARCHITECT & HERITAGE CONSULTANT

The design of the residential flat building at 115 Bowden Street, Meadowbank that responds to the narrow parcel of land and steep contours of the site. The stepped design maximises solar access for all units. The mixed-use development activates the prominent street corner within the Railway Precinct of Meadowbank.



'CEDAR VIEW' APARTMENTS

105 FOREST ROAD & 1A HILL STREET, HURSTVILLE NSW

Client: **LEDUVA PTY LTD**

Role: ARCHITECT

FORM was commissioned to develop the design and produce documentation for the consolidated site for mixed-use development. A key element of the project was its high regard for accessibility by maximising the potential number of 'adaptable units'.

FORM was responsible not only for the overall design of the 126 unit development but was also responsible for coordinating the services of a large body



ROSEMORRAN APARTMENTS

1574-1578 PACIFIC HIGHWAY, WAHROONGA NSW

Client: **SYDVILLE PTY LTD**

Role: ARCHITECT & HERITAGE CONSULTANT

EXPERT WITNESS TO NSW LAND & ENVIRONMENT COURT

Rosemorran Apartments was envisioned as a Seniors self-care residential apartment building. In design development stage, FORM was responsible for historical research and the preparation of documentation addressing the heritage impact of the design on the existing dwelling and construction on a consolidated site. The FORM team was also responsible for the preparation of documents in two successful appeals to the NSW Land and Environment Courts.



15 COWPER STREET

15 COWPER STREET, PARRAMATTA

Client: **PLATINUM PROPERTY ADVISORS PTY LTD**

Role: ARCHITECT

EXPERT WITNESS AT NSW LAND & ENVIRONMENT COURT

FORM was commissioned to develop the design and produce documentation for the development application for a mixed-use development of the project.

The FORM team was also responsible for the preparation of documents in a successful appeal to the NSW Land and Environment Court (NSW L&EC).

The amended application to NSW L&EC proposed a nine storey, mixed use development comprised of ground floor retail space and 29 residential units over the remaining upper eight levels with forty car spaces located in three basement levels.



113-117A WIGRAM

& 23-29 HASSALL STREET, PARRAMATTA

Client: DR ASHRAF SAKLA C/O CALADINES TOWN PLANNING PTY LTD

Role: DESIGN EXCELLENCE COMPETITION

FORM was commissioned to develop the design and produce documentation of a mixed-use development (commercial & residential) for an Architectural Design Competition at 113-117A Wigram & 23-29 Hassall Streets, Parramatta that would achieve a high standard of architectural excellence. The project contained in the order of 152 residential units and ground level commercial units.



OAK STREET, ASHFIELD

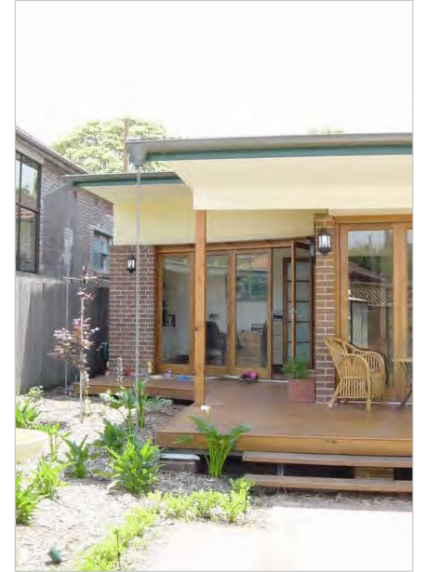
13 OAK STREET, ASHFIELD

Client: **KIRK & TAMARA KIKIREKOV**

Role: ARCHITECT & HERITAGE CONSULTANT

The design for the project included consideration of the 'Federation' period heritage streetscape. The rear additions were designed to be read as separate from the heritage building, and fulfil contemporary lifestyle expectations without interfering with the fabric, character and significance of the original building.

The alterations and additions included in the partial demolition of timber and fibre cement accretions to the rear of the dwelling which was replaced with a new masonry structure to provide a new family, dining, kitchen, study and carport areas.



HURLSTONE AVENUE, SUMMER HILL

9 HURLSTONE AVENUE, SUMMER HILL

Client: **JONATHAN & DIANNE WILSON**

Role: ARCHITECT & HERITAGE CONSULTANT

The project involved the reinstatement of original details of the dwelling to be more sympathetic to the nearby Prospect Hall Conservation area. The alterations to the rear involved the construction of a two-storey addition that would act as the intermediary between the original 19th century detailing of the house and the inclusion of contemporary architecture to meet the accommodation needs of the family.

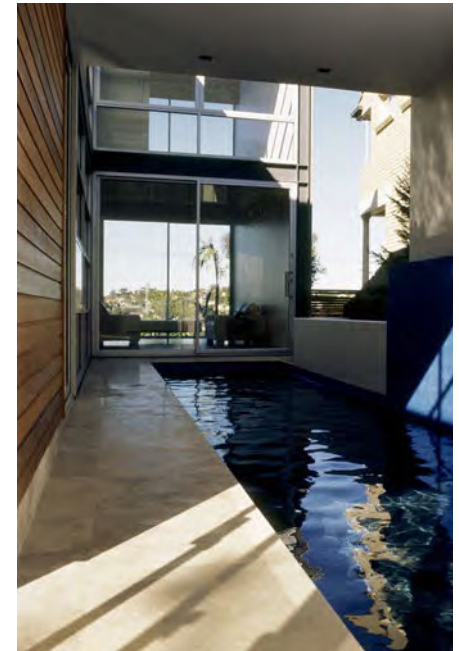
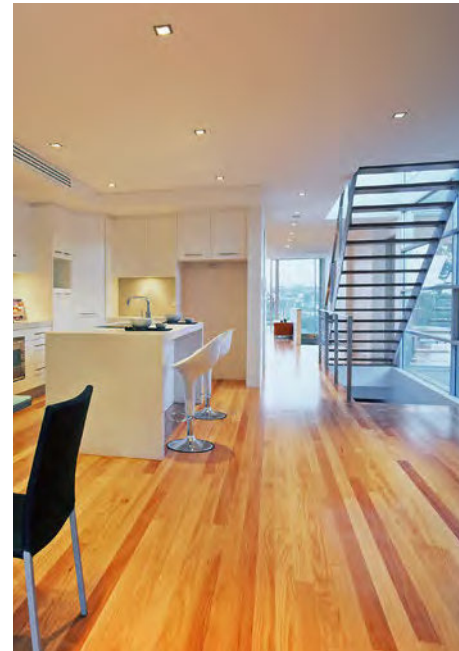
RIVIERA & ALTURA

16A & 16B SEAFORTH CRESCENT, SEAFORTH

Client: **TAVCO GROUP**

Role: ARCHITECTURAL CONSULTATION
Concept Design, DA Documentation &
Construction Documentation

With an open brief to take advantage of the Middle Harbour views, the project involved the demolition of a two-storey dwelling to make way for the construction of a new dwelling on each of the individual Torrens Title lots. The proposed works included the partial demolition of existing building and alterations to the remainder of the dwelling and construction of a new swimming pool with spa. The new dwellings were featured in Contemporary Home Design magazine.



INKERMAN STREET

7 INKERMAN STREET, MOSMAN

Client: **ISAKS DEVELOPMENT PTY LTD**

Role: ARCHITECTURAL CONSULTATION
Concept Design, DA Documentation &
Construction Documentation

Demolition of existing dwelling, design and construction of 2 new luxury houses.
The project included an adjustment to the boundary between Lots 1 & 2 and was
featured in 'Luxury Home Design' magazine.



MARION STREET

81 MARION STREET, LEICHHARDT

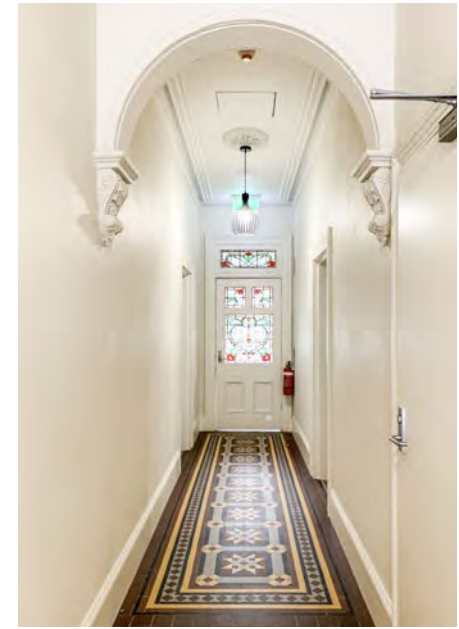
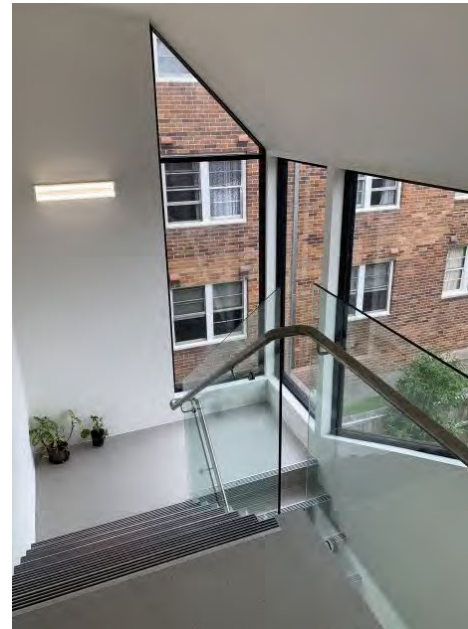
Client: **TOTO MESITI**

Role: ARCHITECTURAL CONSULTATION

Concept Design, DA Documentation &
Construction Documentation

The original house at 81 Marion Street was in extremely poor state of repair as a result of the combination of natural decomposition of materials due to age and increasingly difficult maintenance.

FORM was commissioned to prepare documentation for the retention, refurbishment and adaptive reuse as a 'boutique' boarding house.



ORMONDE

14 VICTORIA STREET, GREENWICH

Client: **DARREN GARDNER**

Role: ARCHITECTURAL & HERITAGE CONSULTATION
Concept Design, DA Documentation
Construction Documentation & Contract Administration

FORM was commissioned to develop the design and produce documentation for the reinstatement of the storm-damaged verandah of a single-storey cottage, that is part of a group of cottages that are representative of the maritime settlement period of this part of Greenwich during the late 1880s/1890s. Our scope of works also, include landscaping of the front garden and replacement of the existing fibro cement garage.





Relevant Project Experience

A

Dong San Uniting Church, Mays Hill (NSW)
 15 Cowper Street, Parramatta (NSW)
 7 Braeside Street, Wahroonga (NSW)
 115 Bowden Street, Meadowbank (NSW)
 28 Seaforth Crescent, Seaforth (NSW)
 16 & 16a Seaforth Crescent, Seaforth (NSW)
 7 & 7a Inkerman Street, Mosman (NSW)
 37 Daphne Street, Botany (NSW) – warehouse conversion
 49 Henderson Road, Alexandria (NSW) – 115 units
 South Terrace, Bankstown (NSW)
 Lord Street, Newtown (NSW) – 12 units
 Ryan Street, Lilyfield (NSW) – 5 units
 Clontarf Residence (WA)
 117 Bowden Street, Meadowbank (NSW)
 66 & 68 Phillip Street, Parramatta (NSW)
 3 Hector Street, Umina Beach (NSW)
 28 Sandbar Place, Lilli Pilli (NSW)

H

Quarantine Station, Manly (NSW)
 Braidwood Central School, Braidwood (NSW)
 'Mandalong', 27 George Street & 32 Enfield Street, Marrickville (NSW)
 'Rosemorran', 1574-1578 Pacific Highway, Wahroonga (NSW)
 Leura Fairways, Gladstone & Fitzroy Road, Leura (NSW)
 Harris Street, Pyrmont (NSW) – 12 units
 18 Hurlstone Avenue, Summer Hill (NSW)
 55 George Street, The Rocks "Harrington's Buildings" (NSW)

AH

Crest Community Baptist Church, Bass Hill (NSW)
 10-14 Hunter Street, Sydney (NSW)
 Master Plans – Stacy St, Bankstown (NSW)
 Castlereagh St, Liverpool (NSW)
 32 Albert Street, Parramatta (NSW)
 43 Iandra Street, Concord (NSW)
 81 Marion Street, Leichhardt (NSW)
 221 Annangrove Road, Annangrove (NSW)



Heritage and Conservation Projects

Quarantine Station, North Head, Manly (NSW)
 Braidwood Central School, Wilson Street, Braidwood (NSW)
 Former NSW Sports Club, 10-14 Hunter Street, Sydney (NSW)
 'Willow Grove', Parramatta (NSW)
 Harrington's Buildings, The Rocks (NSW)
 The Former AGL Company Building, Campsie (NSW)
 Lancer Barracks, Parramatta (NSW)
 HMAS Watson, Watsons Bay (NSW)
 Paddington Uniting Church & Market Place (NSW)
 Haberfield Post Restaurant, Haberfield (NSW)
 Kelvin Park Drive, Bringelly (NSW)
 Oatlands Golf Club (NSW)
 Pyrmont Arms Hotel (NSW)
 Oddfellows Arms Inn, North Parramatta (NSW)

Granville Town Hall
 Auburn Town Hall (since demolished)
 Dong San Uniting Church, Mays Hill (NSW)
 David Lennox House, Parramatta (NSW)
 St Francis of Assisi Chapel, St Patrick's Cemetery, Parramatta
 Goodlet & Smith Brickworks, Merrylands (NSW)
 'Norfolk House', North Parramatta (NSW)
 Wesley Lodge, Westmead (NSW)
 128 Pyrmont Bridge Road, Annadale (NSW)
 Epworth House, Parramatta Council Chambers (NSW)
 Freemasons Arms Lane, Parramatta (NSW)
 Peel House, Parramatta (NSW)
 Emu Plains Railway Station (NSW)
 Pasticceria Papa, Haberfield (NSW)

HARRINGTON'S BUILDINGS

55 GEORGE STREET, THE ROCKS

Client: Sydney Harbour Foreshore Authority

Role: Heritage Consultant

FORM architects was commissioned to review and update the Conservation Management Plan for the Harrington's Buildings in The Rocks. The update involved the review of the archaeology and historical context which informed the existing conservation management policies. In addition to updating the CMP, FORM was also commissioned to prepare schedules for conservation works and ongoing maintenance.



THE FORMER AGL COMPANY BUILDING

63 BEAMISH STREET, CAMPSIE

Client: CANTERBURY-BANKSTOWN COUNCIL (FORMER CANTERBURY CITY COUNCIL)

Role: HERITAGE CONSULTANT

FORM architects was commissioned to review and update the Conservation Management Plan for the former AGL Company Building. The scope of the review included changes to the character of the Campsie Civic Precinct located in the Canterbury Local Government Area. In addition to updating the CMP, FORM was also commissioned to prepare schedules for conservation works and ongoing maintenance.



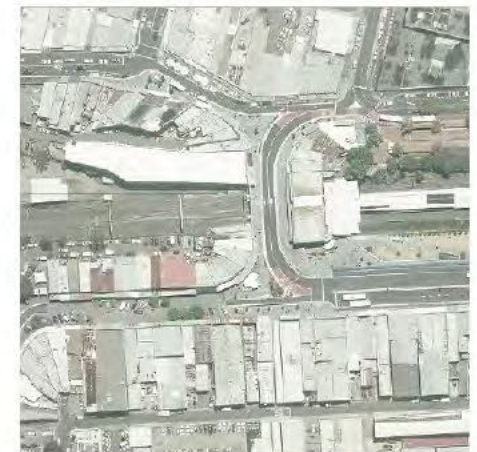
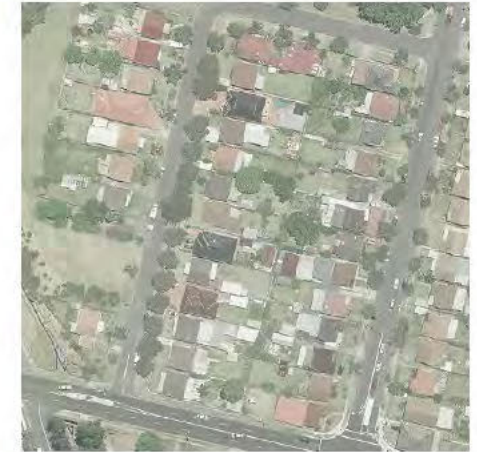
HERITAGE STUDY REVIEW

BANKSTOWN CITY PLAZA & VIMY STREET, BANKSTOWN

Client: CANTERBURY-BANKSTOWN CITY COUNCIL (FORMER BANKSTOWN CITY COUNCIL)

Role: HERITAGE CONSULTANT

FORM was commissioned to undertake a review of the Heritage Studies for the Bankstown Plaza and the Vimy Street War Service Estate precincts. This review was one of the initiatives of the Bankstown CBD Local Area plan to protect the historic places which contribute to the cultural and architectural history of the City of Bankstown.



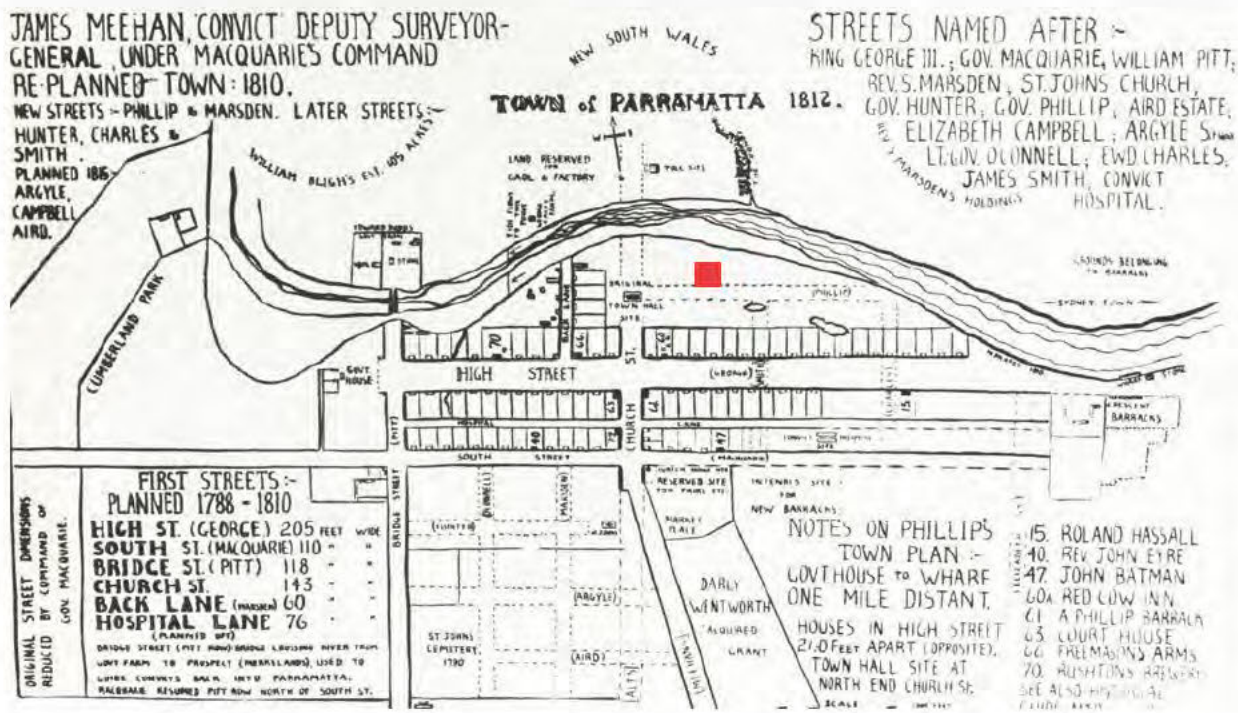
'WILLOW GROVE'

34 Phillip Street, Parramatta NSW 2150

Client: City of Parramatta Council

Role: Heritage Consultant

FORM was commissioned to prepare a Conservation Management Plan for 'Willow Grove'. Our commission include site and project coordination meetings as required to:- (i) review and finalise the Scope of Works; (ii) provide a current Conservation Management Plan; and (iii) compilation of a 10 year works program for planning, scheduling and budgeting purposes of future conservation work and alignment to Council's Building Asset Management Plan.



LILIANFELS RESORT

Blue Mountains NSW

Client: NARA Corporation (Japan) with The Mawland Group

Role: Architectural Consultancy
DA Documentation
Construction Documentation

Ron was commissioned to develop the design and produce documentation up to the construction stage for this project.



FORMER NSW SPORTS CLUB

10 - 14 Hunter Street, Sydney NSW

Client: IEA Investments Pty Ltd

Role: Project and Heritage Consultant

FORM architects was commissioned to provide specialist heritage advice, prepare documentation for a S96 submission and construction documentation as well as coordinate with the archaeologist, heritage advisors at City of Sydney Council and Heritage Council of NSW. In addition, FORM was also commissioned to prepare a heritage interpretation study and archive recording prior demolition.



DONG SAN UNITING CHURCH

125 Great Western Highway (Corner Burnett Street), Mays Hill NSW

Client: Dong San Uniting Church

Role: Architectural Consultancy
Heritage Consultancy

FORM was commissioned to develop the concept design and produce documentation for the development application up to construction stage and contract administration for this project. The proposal involves demolishing a dilapidated service station on the land and construct a “place of public worship” as defined under Council’s planning instrument with associated carparking and landscaping for the Dong San Uniting Church.



CREST COMMUNITY BAPTIST CHURCH

59 Johnston Road, Bass Hill NSW

Client: Crest Community Baptist Church
Heritage Consultant

Role: Architect - DA Documentation

FORM was responsible for the preparation of documentation for a development application to construct a new Church and sports hall for the Crest Community Baptist Church to the City of Canterbury-Bankstown Council. The Baptist Church has been associated with the social enrichment and outreach activities at this location since the 1930s and the proposed facilities will ensure that they will be able to maintain their heritage and to reinforce their commitment to the community in the future.

The proposal involves the demolition of the c1905 farmhouse at 59 Johnston Road, Bass Hill as well as two other structures on the site and the erection of a new Church complex comprising a church hall building with associated caretakers' cottage and a multipurpose sports hall.



QUARANTINE STATION (P21 & P23 BUILDINGS)

North Head, Manly NSW

Client: Mawland Quarantine Station Pty Ltd

Role: Heritage Consultant

FORM was commissioned to provide heritage consultancy for application under Section 65A of the NSW Heritage Act to modify approval and submission of documentation to comply with Section 60 conditions at Quarantine Station, North Head (SHR 01003).

Our commission include fortnightly site inspections and verification of 'as built' construction with conditions of consent and documentation approved by the integrated consent authorities.



OAK STREET, ASHFIELD

13 OAK STREET, ASHFIELD

Client: **KIRK & TAMARA KIKIREKOV**

Role: ARCHITECT & HERITAGE CONSULTANT

The design for the project included consideration of the 'Federation' period heritage streetscape. The rear additions were designed to be read as separate from the heritage building, and fulfil contemporary lifestyle expectations without interfering with the fabric, character and significance of the original building.

The alterations and additions included in the partial demolition of timber and fibre cement accretions to the rear of the dwelling which was replaced with a new masonry structure to provide a new family, dining, kitchen, study and carport areas.



LILLI PILLI

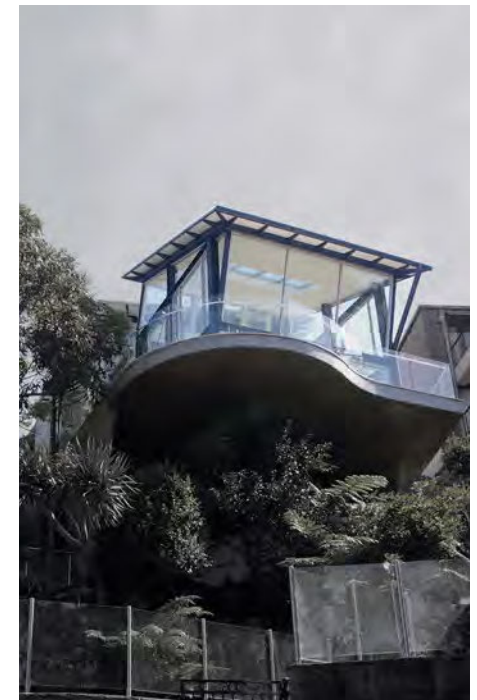
34 SANDBAR PLACE, LILLI PILLI

Client: **ANDRE & REBECCA SHARPE**

Role: ARCHITECTURAL CONSULTATION
CONCEPT DESIGN, DA DOCUMENTATION & CONSTRUCTION DOCUMENTATION

Prepared contract documentation and responsible for contract administration for the alterations and additions to the existing four-storey terrace house.

The design maximises the use of available natural light and ventilation within the house. The alterations to the roof form and pitch have been designed to maximise the view of Port Hacking and remains sympathetic to the streetscape. The objective was to get winter sun and a south facing balcony. The additions included an extension of the billiard room, inclusion of a new cellar and new balcony.



BRAESIDE

7 BRAESIDE STREET, WAHROONGA

Client: **ALEX AND WENDY BERRILL**

Role: ARCHITECTURAL CONSULTANCY
Concept Design, DA Documentation, Construction Documentation &
Contract Administration

FORM was commissioned to prepare and develop the design and produce documentation to prepare a development application for submission to Ku-ring-gai Council for alterations and additions. FORM was also responsible for the preparation of documents in one successful appeals to the NSW Land and Environment Court.



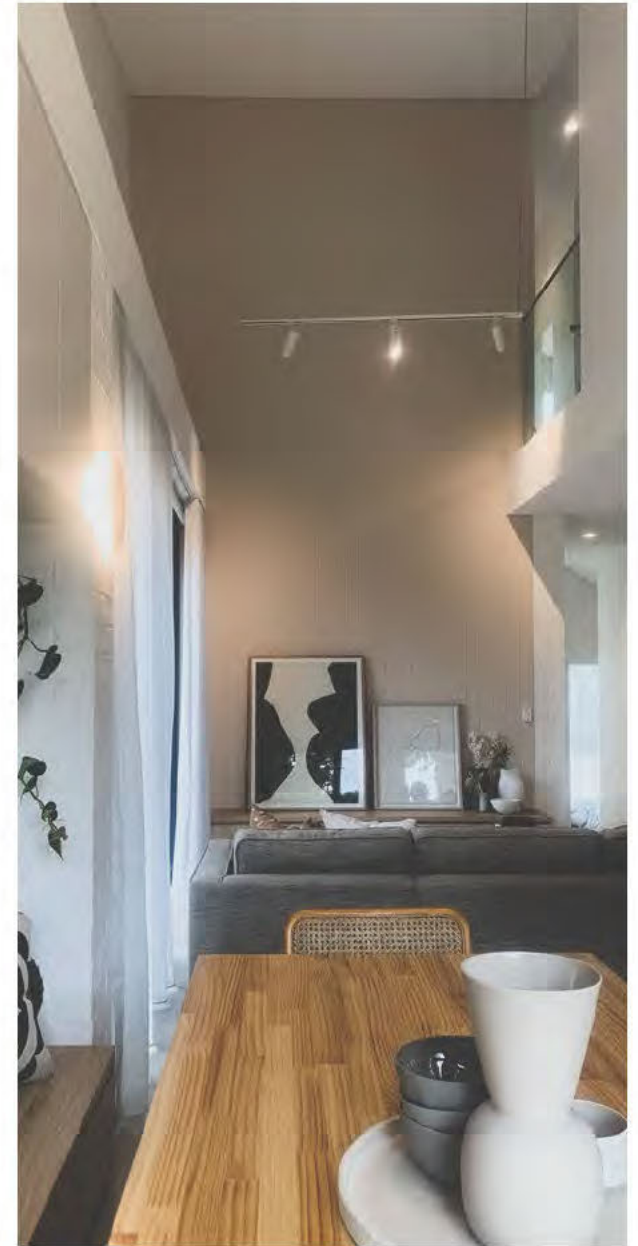
21 WESLEY STREET

TELOPEA, NSW 2117

Client: **SUSAN CHAN**

Role: ARCHITECTURAL CONSULTANCY
Due Diligence, Concept Design & DA Documentation

FORM was commissioned to prepare and develop the design and produce documentation to prepare a development application for submission to City of Parramatta Council for the construction of a new dual-occupancy.



Megan Jones Principal



B.Arch (Hons)
FRAIA, JP

NSW Registration - 4148
QLD Registration - 4357

Megan joined the practice in 1980 and leads the Heritage Group. Megan's passion since University and demonstrable skill is in the conservation and adaptive reuse of disused and heritage buildings to fit them for a sustainable future. She has considerable experience in heritage architecture and related adaptive reuse projects and provides industry guidance based on this experience.

She has undertaken numerous conservation and adaptive reuse projects over the past 35 years, many of which have received local and international awards including UNESCO Asia Pacific Awards for the conservation and adaptation of the St Patrick's College, Manly; the Governor's Stables as part of the Sydney Conservatorium of Music and the Governor Macquarie's Female Orphan School at Western Sydney University Parramatta.

Her recent major projects include the Brisbane City Hall Restoration Project, the extensive re-working and additions to 5 Martin Place, Sydney and the Anzac Square Restoration and Enhancement Project, Brisbane. She is currently leading the conservation and adaptation of the Parramatta North Historic Sites, including the former Female Factory, former Roman Catholic Orphanage and Parramatta Gaol.

Megan is active in architecture beyond TKD Architects, being a member of the AIA NSW Chapter committee for the publication "New Uses for Heritage Places", 2008 and chairing the Chapter committee for the publication "Alterations and Additions to Heritage Places". She is an examiner with the NSW Architects Registration Board, a judge of the NSW OEH Green Globe Awards and lectures occasionally at USYD and UTS. She was a member of the NSW Heritage Council from 2002 to 2005.

Education

- 1978 Bachelor of Architecture (Honours)
University of NSW
Award winning graduating thesis:
"The Role of Rehabilitation in the
Revitalisation of Urban Areas"
- 1980 Registration NSW Board of Architects
Chartered Architect
- 1988 Landscape Technician's Higher Certificate
- 2010 Registration QLD Board of Architects

Professional Associations

- > 1980 Australian Institute of Architects
Member
- > 2002-2006 Heritage Council of NSW
Fire Access and Services Advisory Panel
Member
- > 2002-2005 Heritage Council of NSW
Member
- > 2003 National Association of Women in
Construction Member

- > 2010 Australian Institute of Architects
Fellow
- > 2013 Examiner, Architects Registration
Board

Professional Experience

2011- *Tanner Kibble Denton Architects*
Principal

2002-2010 *Tanner Architects*
Practice Director

1995 *Tanner Architects*
Associate Director

1991 *Tanner Architects*
Senior Architect
Specialising in Heritage and Conservation
Projects, Conservation Plans, Adaptive Reuse
projects and residential work.

1983-current *Michael E. and C. Megan Jones
Pty. Ltd. Architects*
Director of own practice.
Conservation Plans and Conservation and
Restoration of residences.

1980-1983 *Cox Tanner and
Howard Tanner & Associates*
Architect
Renovation and Restoration of Buildings
including Westpac Bank, and residential
properties. Conservation studies.

Recent Major Projects

- > *Parramatta North Historic Sites*
- > *5 Martin Place*
- > *50 Martin Place*
- > *Anzac Square, Brisbane*
- > *Brisbane City Hall, Brisbane*
- > *MacArthur Chambers, Brisbane*
- > *RNA Industrial Pavilion, Bowen Hills*
- > *350 George Street, Sydney*
- > *Female Orphan School, Rydalmere*
- > *St Patrick's College, Manly*
- > *Brush Farm House, Eastwood*
- > *Curzon Hall, Marsfield*
- > *Prince Henry Hospital - Coperture and
The Dickson*
- > *Old Kings School, Parramatta*
- > *Former AGL Buildings, The Bond,
30-38 Hickson Road, Millers Point*
- > *Sydney Conservatorium of Music,
Greenway Stables, Sydney*
- > *School of Arts, Sydney*
- > *Valhalla, Glebe*
- > *Mt Stromlo Observatory, ACT*
- > *Tempe Estate, North Arncliffe*
- > *Mungerie House, New Rouse Hill*
- > *Drill Master's House, Rydalmere, UWS*
- > *Rozelle Hospital*
- > *Gladesville Hospital*

PROJECT

Western Sydney University Female Orphan School

The University of Western Sydney's Parramatta Campus is a culturally significant place, continuously used since 1813 as a public institution - initially as a school for the new colony's orphan girls, then to include boys from 1850 until 1888, then as a psychiatric hospital and since 1998 as a university. The sequential development has resulted in a fine grained built form with a series of non-axial vistas and interstitial places bounded by a cohesive group of buildings.

This project involved the conservation and adaptation of the nationally significant 1813 Female Orphan School, the oldest three storey brick building in Australia, providing exhibition spaces and meeting rooms for the University and the wider community.

Delivered in four stages the careful repair, restoration and, where required, re-construction of original facades, involved extensive research and detailed documentation along with careful monitoring during construction. The introduction of services to suit the new use involved careful planning and detailed documentation. The fragile fabric was repaired and the various periods of the life of the building were interpreted in the interiors.

Stage 1, completed in 2002, comprised conservation works to the exterior of the Central three storey portion of the group and the conservation and adaptive re-use of its interiors. Lost elements were reconstructed, including the paired staircase in the entry foyer, to re-establish the design program of the group and the overriding philosophy for the introduction of new services and elements was established at this initial stage.

Client: Western Sydney University
Location: Parramatta, NSW
Value: \$10 million
Completion: 2003-2014

1| Exterior

2| West Wing Courtyard

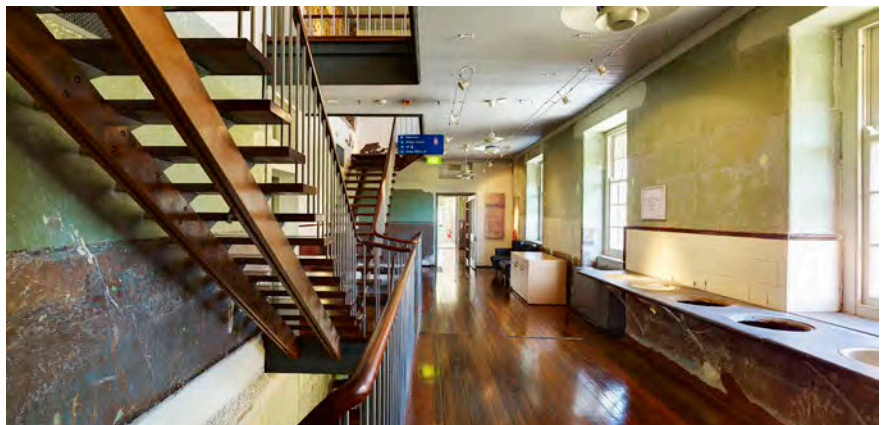
3| Central Wing Entry Foyer



1|



2|



3|

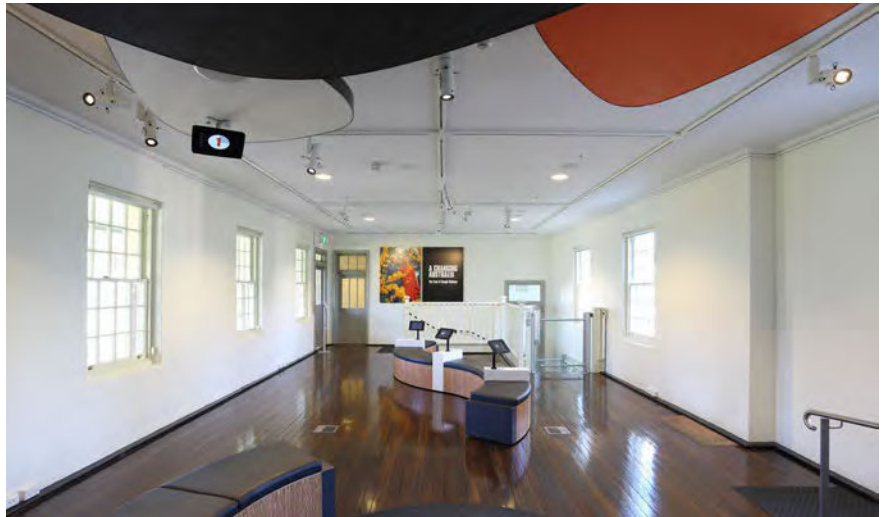
PROJECT

Stage 2, completed in 2008, comprised conservation works to the facades and roofs of the West and East Wings to secure the buildings and to halt deterioration through falling and rising damp. Unfortunate and intrusive modifications were removed to allow original elements and fabric to be revealed.

Stage 3, completed in 2009, comprised works to the West Wing, providing flexible exhibition spaces together with meeting and conference rooms for the Margaret Whitlam Galleries. The introduction of disabled access, flexible exhibition display systems and services to suit the new use involved careful planning and detailed documentation.

Stage 4 completes the project and delivers new exhibition, research and administrative space for the Whitlam Institute and Prime Ministerial Library. This stage also included extensive renewal and improvements to the external landscape of the historic courtyard and carriage loop.

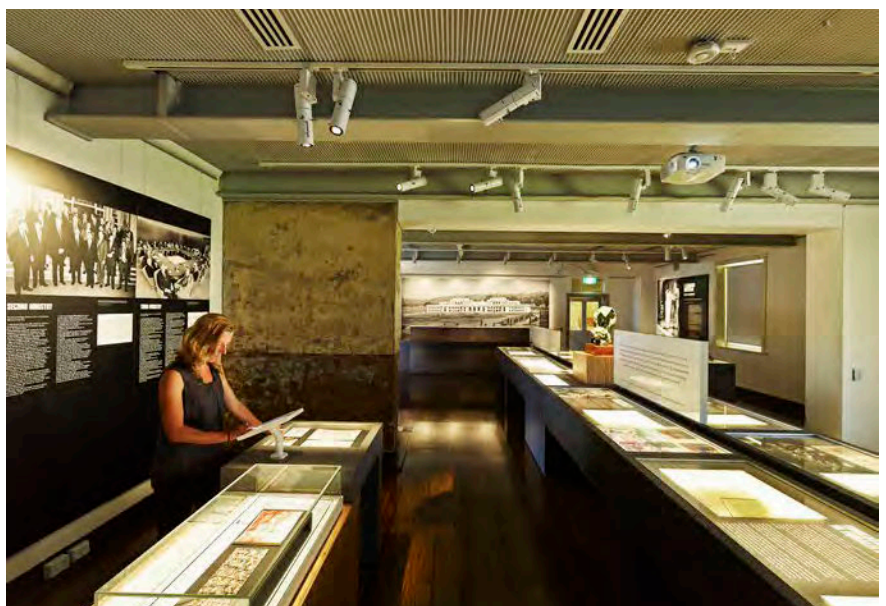
With new cultural uses, including the Whitlam Institute, the Female Orphan School is once again a vital part of the community. The result showcases the building's original architectural qualities and its new contemporary amenity. This project displays a sound technical approach in the conservation of existing significant fabric, while the preservation of all phases of the building's history captures in palimpsest its 200-year history of varied use. The revitalisation of this place reveals the rich layers of meaning and history in a way that is easily understood and offers connections to contemporary Australian society.



1|



2|



3|

1| Whitlam Institute Education Room

2| Margaret Whitlam Gallery Room

3| Whitlam Institute Education Room

PROJECT

Parramatta North Urban Transformation

TKD Architects has been working with Urban Growth NSW since 2013 on the master plan for the Parramatta North Historic Sites to transform it into a vibrant place that respects and preserves some of our most important heritage, whilst providing housing and employment opportunities for Parramatta and Greater Sydney.

As Principal Heritage Consultant TKD Architects has lead the team of architects, heritage landscape specialists, historians and archaeologists to guide the conservation of this significant site and the location and scale of new development. Our work has included the preparation of: the Consolidated Conservation Management Plan; the conservation works tender documentation; adaptive re-use studies and archival photographic recording.

The Parramatta North Historic Sites have a rich and varied history that extends from the stories of the Darug People. The sites can tell us much about the early development of Parramatta, New South Wales and Australia and changing community attitudes to moral and social reform, welfare and the treatment of mental illness. The site comprises the Cumberland Hospital East Campus including remnants of the Female Factory, the Norma Parker/Kambala Centre and the Parramatta Gaol.

Client: Urban Growth NSW
Location: North Parramatta, NSW
Completion: 2020

1 | Female Factory Precinct
2 | View over oval
3 | 1943 Aerial Photograph



1 |



2 |



3 |

PROJECT

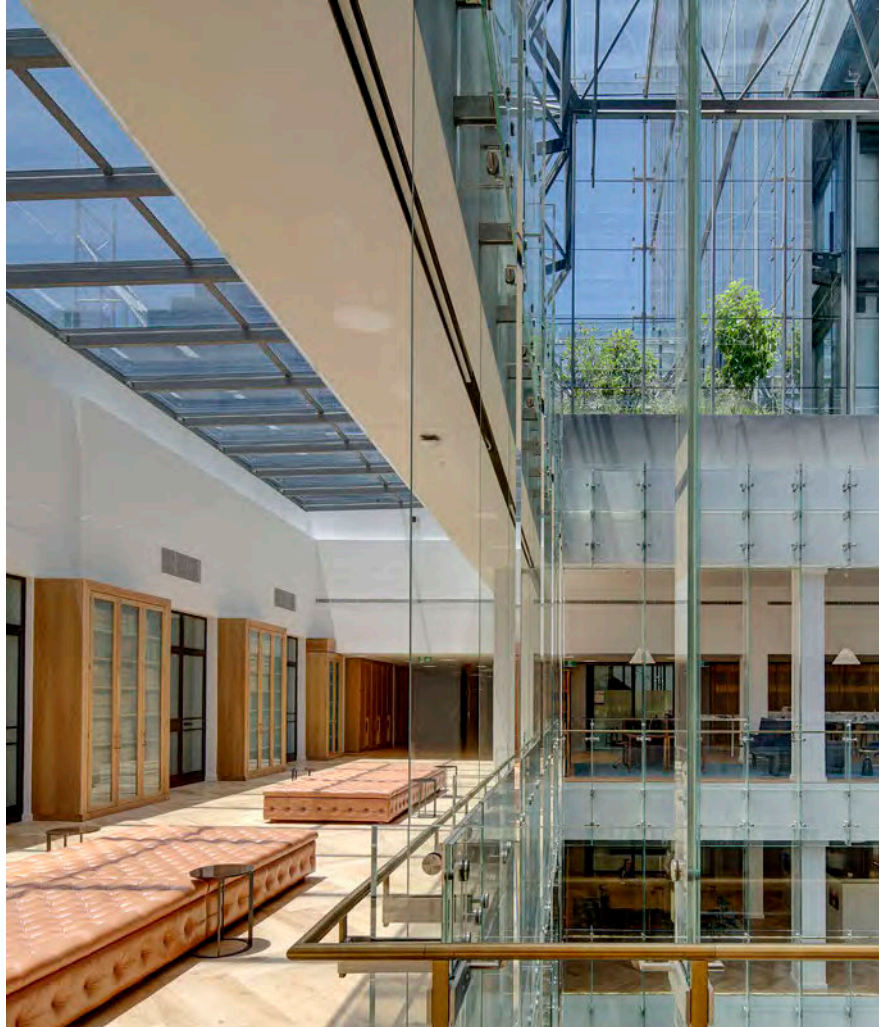
5 Martin Place (120 Pitt Street)

5 Martin Place (formerly 120 Pitt Street), the former Head Office of the Commonwealth Bank, the iconic 'Money Box' building at Martin Place is a significant heritage item.

Undertaken in association with Johnson Pilton Walker Architects, Tanner Kibble Denton undertook the redevelopment of the building, setting new benchmarks for office buildings in Sydney.

The redevelopment of the site comprised the following:

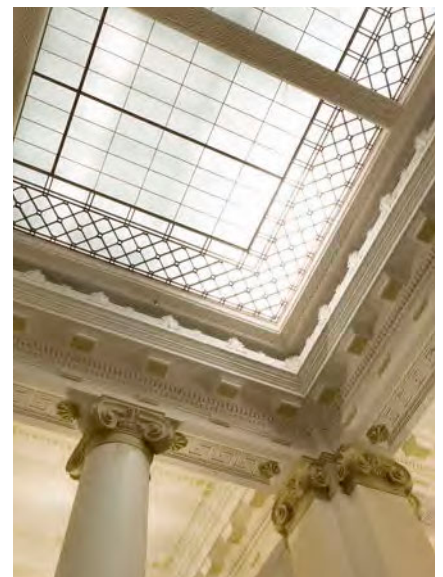
- > Conservation Management Plan
- > The refurbishment of the original 1916 building and 1933 extension, with restoration of significant heritage spaces and reintroduction of lost heritage fabric and spaces like the lightwell and atrium.
- > The replacement of the 1968 annexe with a new addition which is consistent with the materials, scale, design and proportions of the adjoining historic building facing Martin Place.
- > Reactivation of the ground plane with a new through site-link between Martin Place and Rowe Street.
- > A ten storey vertical extension designed by JPW Architects which cantilevers over the 1916/33 building with an innovative steel framed structure, which allows the existing building to be free of any structural intervention.



1|



2|



3|

Architects: JPW Architects and TKD Architects
Client: CBUS & DEXUS
Location: Sydney, NSW
Completion: 2015

- 1 | New glass atrium at Level 9
- 2 | External view from Martin Place
- 3 | Banking Chamber laylight

PROJECT

Brisbane City Hall

The Brisbane City Hall was rededicated on 6 April 2013 after a comprehensive restoration program to conserve its significant spaces and fabric, to rectify its structural, fire and life safety deficits and to re-equip it for its role as the focus for Brisbane's civic, cultural, and social events.

The revitalisation of the most significant heritage building in Queensland involved conservation and adaptation works; refurbishment of existing and new interior spaces; new building services; and the design of new components including new galleries for the Museum of Brisbane at roof level and new catering kitchen within an excavated basement.

The success of this project owes much to the design team's understanding of the original design intent and program of the 1930s City Hall together with the potential of new technologies and materials. A simpler interior colour scheme was overlaid using a restricted palette of cool colours to enhance the original fabric of the building including marble, mosaic tile-work, silky oak joinery, bronzed coffered ceilings, decorative glazing and plasterwork.

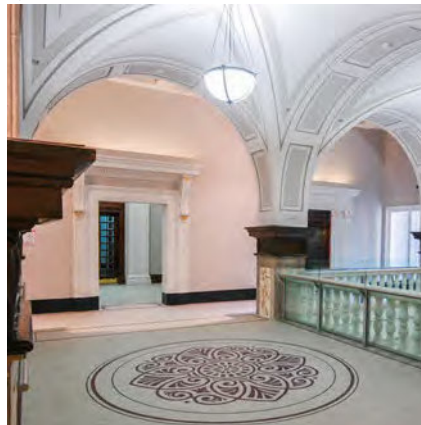
The result showcases the building's original architectural qualities and its new contemporary amenity thanks to the design team's creative vision and perseverance.

Client: Brisbane City Council
Location: Brisbane QLD
Completion: 2013

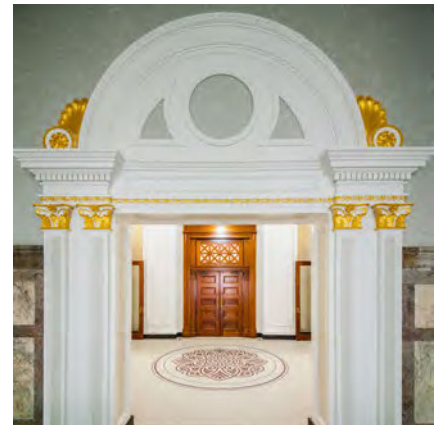
- 1| Main Auditorium
- 2| Ann Street Lobby
- 3| King George Square Lobby Level 1
- 4| King George Square Foyer



1|



2|



3|



4|

PROJECT

Anzac Square, Brisbane

Anzac Square is Queensland's memorial to those Queenslanders who have served their country in conflict and in peace. Anzac Square contains the 'Eternal Flame of Remembrance' held in a continuously lit bronze urn, dedicated on Tuesday, 11 November 1930; with an undercroft containing the WWI Memorial Crypt, WWII Memorial Gallery, Post WWII Memorial Gallery/Education space.

The Anzac Square Restoration and Enhancement Project is a joint initiative between the Queensland Government and Brisbane City Council and will be implemented over a series of stages. In 2013 the Queensland Government and Brisbane City Council recognised the need to undertake an extensive program of structural rectification and restoration works to address the:

- > Conservation of the significance of the site and its components
- > Regular repair and maintenance of its significant fabric and elements
- > Structural upgrade works to maintain structural integrity
- > Adaptations and additions to accommodate new uses to ensure future relevance and usefulness
- > Regular upgrading of technical and building services to suit contemporary amenity for public ceremonies and events and current educational and interpretation theory and practice
- > Building code compliance upgrade for public health, life safety and equitable access etc

The Stage 1 Internal Strip-Out of the later non-significant interiors was undertaken in 2014. This work allowed for the detailed investigation and analysis of the existing structural, waterproofing and drainage systems to inform and guide the scope of the later stages.

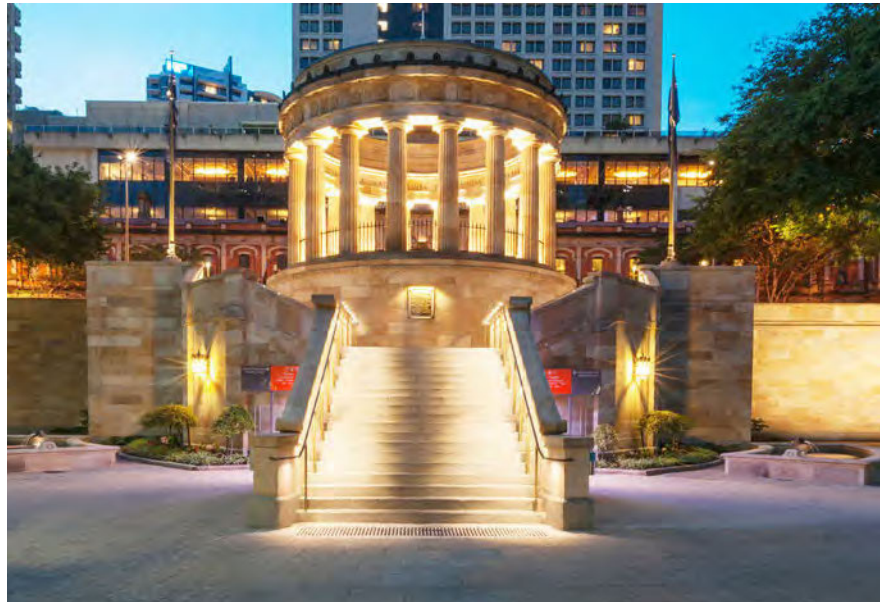
Client: Brisbane City Council & QLD State Government
Location: Brisbane, QLD
Completion: 2019

1| Night view of the Shrine.

2| The conserved Boer War Memorial

3| Anzac Day Dawn Service 2019.

4| View looking across the Square



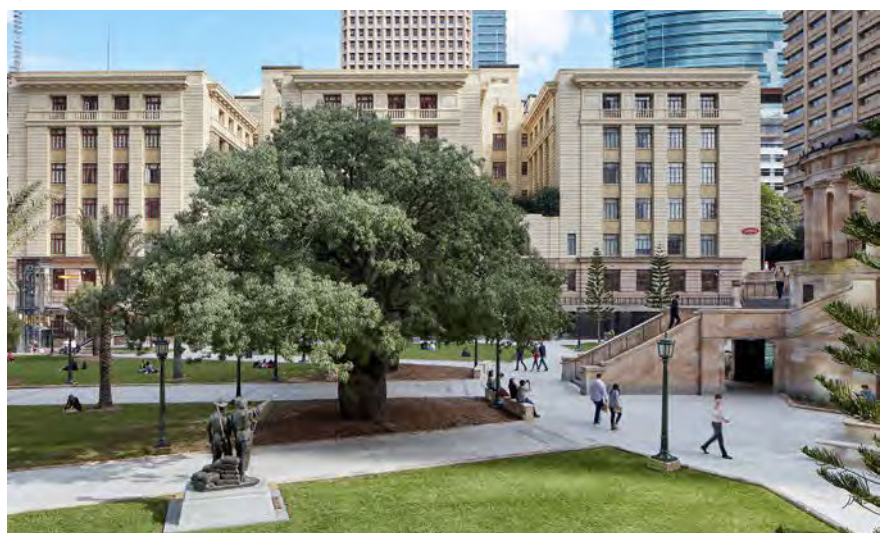
1|



2|



3|



4|

PROJECT

The Stage 2 External Restoration Works were completed in February 2015 to provide a structurally sound exterior with restored external finishes and a waterproof interior in time for ANZAC Day 2015. The work included concrete slab repairs (including replacement where needed); installation of new waterproof membranes, new drains, granite stair treads and pavements, new brass handrails and lighting; the repair of the stonework, iron work etc, and the dismantling of parts of the Shrine of Memories for protection and restoration. The Eternal Flame was restored and the pedestrian subway linking Central Station with Anzac Square was refurbished to include opportunities for the introduction of interpretation wall panels.

The Stage 3 Internal Refurbishment Works to provide rejuvenated interiors with improved access were completed in time for Anzac Day 2016. The following functions are accommodated:

- > World War I Memorial Crypt with the WWI memorials restored and curated
- > World War II Memorial Gallery with the WWII memorials restored and curated
- > Post World War II Memorial Gallery with the post WWII memorials restored and curated
- > New Education Centre with AV and data services provision for future exhibitions and presentations
- > New back-of-house Facilities including Toilets, Tea Room, services plant rooms and store rooms

Stage 4 was completed for Anzac Day 2019 in collaboration with Tract Landscape Architects, and included:

- > Enhancement of the parkland to re-define it as a memorial site, to reinforce its role as a commemorative space, and balance these objectives with its role as a strategic urban open space
- > Maximise use of the external and internal spaces to provide exhibition and educative opportunities
- > Enhancement of the experience for pedestrians and visitors.
- > Curation of the undercroft areas and the commemorative parklands with educational and interpretive media for engagement with the public
- > The installation of new commemorative bronze screens on two sides of the Square which commemorate the towns of origin of Queenslanders who served in World Wars I and II.



5|



6|



7|



8|

5| New bronze commemorative screen

6| Commemorative screen detail

7| The Shrine on Anzac Day 2016

8| The refurbished World War II Memorial Gallery

PROJECT

International College of Management

Moran House, Kelly House and the former Cardinal Freeman Pastoral Centre were conserved and adapted in 1996 to accommodate an international hospitality training school—the International College of Management Sydney (ICMS).

Internal alterations and adaptation works completed to suit the new use included the upgrade of public areas, classrooms, bedrooms, bathrooms. The existing catering kitchen in Moran House was refurbished and a new training kitchen to accommodate a class of 20 students was sleeved into the single storey Pastoral Centre.

The fire safety of Moran House was upgraded through the creation of smoke lobbies at the internal stairways by the introduction of glazed timber screens. New services were introduced throughout (fire sprinkler system, EWIS, smoke detectors, emergency lighting and exit signs, new lighting, power and data, new gas heating to classrooms and new hot water systems, lifts.)

The project was commended as an Outstanding Project in the 2000 UNESCO Asia Pacific Heritage Awards with the following citation: Restoration of the structures of the St Patrick's College gave a new, yet congruent, adaptive reuse as a tourism training institute, preserving the dignity and scholarly character of these buildings. The project successfully incorporated all required services in the face of tough integration issues. The high quality of workmanship is evidenced by the meticulous work and careful attention to every interior and exterior detail. In illustrating the benefits of heritage preservation to students involved in the tourism industry, the project can be expected to have a far-reaching impact upon the heritage conservation movement.

Client: International College of Management Sydney

Location: Manly, NSW

Completion: 1996

1 | Front external view Main staircase

2 | Chapel

3 | Main Staircase

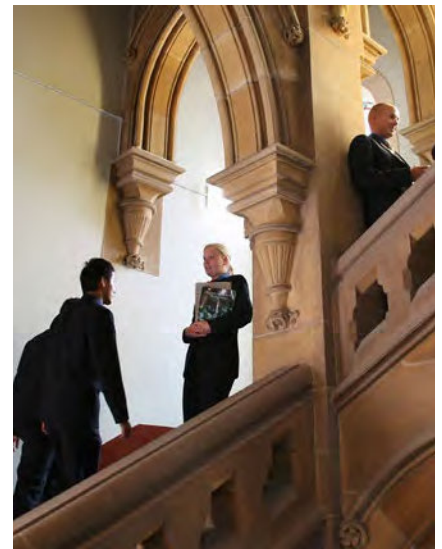
4 | Reception



1|



2|



3|



4|

PROJECT

Sydney Conservatorium of Music

This project entailed the conservation and adaptation of 1817-21 Government Stables to provide teaching and performance facilities for the Sydney Conservatorium of Music.

Our role included the resolution of the detailed planning within the Greenway Building to achieve and adaptive re-use outcome which fulfilled the dual aims of maximum conservation of the heritage significance of the building and the provision of a world class facility for the Sydney Conservatorium of Music.

The external elevations were carefully repaired and conserved, including the Gothic style stone traceried windows.

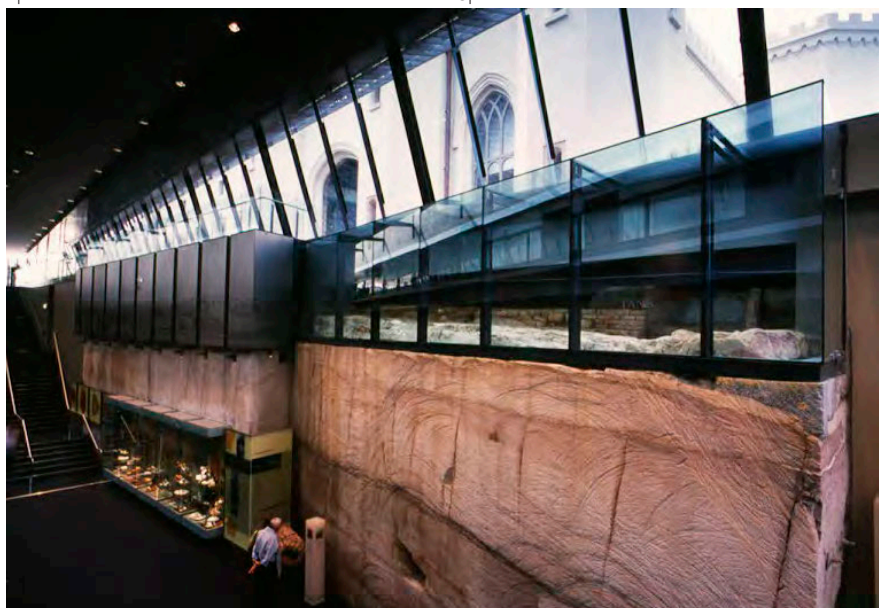
> UNESCO Award 2002
for conservation and adaptation of Governor's stables as part of the Sydney Conservatorium of Music and Conservatorium High School

> World Architecture Award Nomination 2002
for Sydney Conservatorium of Music and Conservatorium High School

> RAI (NSW Chapter) Architecture Award for Public Buildings, 2002
for outstanding architectural work to Sydney Conservatorium of Music & Conservatorium High School.

Client: NSW Department of Education and Training
Location: Sydney, NSW
Completion: 2001

- 1| Greenway Stables Building
- 2| Greenway Gallery
- 3| Verbruggen Hall
- 4| Interior lobby



I have more than 30 years executive leadership experience in the development industry with knowledge spanning government, private sector, universities and not-for-profit entities. Having delivered complex large-scale urban projects and led strategic change and growth through periods of flux and transition, I have a depth of relevant planning, design and development skills as well as governance, finance, audit and risk, HR, and property committee expertise.

CAREER OVERVIEW

- **UNSW Sydney**
 - Pro Vice-Chancellor, Precincts (Part-time) 2020- present
 - Dean, Faculty of the Built Environment 2016-2020
- **Harvard University**, Graduate School of Design, Loeb Fellow 2013-2014
- **Sydney Harbour Foreshore Authority (SHFA)** Executive Director, Place Development 2012–2013
- **Deputy Government Architect, NSW Government Architect's Office (GAO)** 2007-2012, 2014-5
- **Sydney Olympic Park Authority**, Executive Director, Placemaking, 2004-2007
- **Helen Lochhead Urban Projects Pty Ltd**, Managing Director, consulting to government 1996-2006
- **City of Sydney**
 - Director, Special City Projects 1995-1996
 - Manager, Urban Design 1992-1995

BOARDS (current)

- **NSW Architects Registration Board**, Non-Executive Director 2020-present
- **IBL Ltd**: Non-Executive Director, Insurance 2020- present
- **Australian Institute of Architects (AIA)**, Non-Executive Director, Chair since 2019 2016- present
 - Member, Finance Audit and Risk, People and Culture and Properties Committees
- **Australian Institute of Architects Foundation**, Non-Executive Director, NFP, 2016-19
- **The Anganwadi Project, India**, Non-Executive Director, (NFP building pre-schools in India) 2018-present
- **Council for Tall Buildings and Urban Habitat (CTBUH) Australia**, Non-Executive Director 2018-present

ADVISORY COMMITTEES & PANELS (current)

- **Better Places Advisory Group** (NSW Dept of Planning Industry and Environment) 2020- present
- **Western Sydney Aerotropolis Quality Assurance Panel** 2020- present
- **Local Planning Panels**: City of Sydney, North Sydney 2018- present
- **Sydney South Planning Panel** (Chair) 2018- present
- **Independent Planning Commission** (IPC) 2017- present
- **State Design Review Panels**: NSW, ACT, WA, QLD 2013- present

QUALIFICATIONS & AFFILIATIONS

- M. Sc (Architecture & Urban Design) Columbia University, New York
- B. Arch (Hons 1) B. Sc. Arch (Hons 1) University of Sydney
- Dip Hort (Hons) Ryde School of Horticulture, Sydney
- Registered Architect, NSW Australia, Registration number: 4675
- Registered Planner, Planning Institute of Australia (MPIA)
- Registered Landscape Architect, Australian Institute of Landscape Architects (AILA)
- Life Fellow, Australian Institute of Architects (LFRAIA)
- Fellow, Australian Institute of Company Directors (FAICD)

CAREER HISTORY

Pro Vice Chancellor, Precincts, UNSW Sydney (part-time)

2021 - present

- Strategic direction and oversight of all UNSW campus precincts reporting to the VC and UNSW Council

Dean, UNSW Faculty of the Built Environment

2016-2020

- Leadership of multidisciplinary Faculty, member of University Executive reporting to President/VC
- Faculty: 150+ permanent staff, 400+ sessional staff, Student body: 3000+ students. Annual revenue \$75 m+
- **Notable Achievements:**
- Delivered Faculty strategy, structural change and transformation
- Delivered top Rankings: top 25 Built Environment Faculties globally (QS World University Rankings, 2019)
- Ranked #1 in research performance in Australia in Built Environment (FoR12) (ERA 2019)
- Sustained student growth and reputation over 5 years
- Largest Built Environment higher degree (PhD) student cohort in Australia.
- Introduced new Masters, Dual degrees, work integrated learning (WIL) and CPD programs
- Expanded international partnerships globally

Harvard Graduate School of Design, Loeb Fellow

2013-4

- Fellowship focused on leadership development and the study of innovative strategies and solutions, policies and governance models, to better design and deliver more liveable, climate resilient urban development.

Sydney Harbour Foreshore Authority (SHFA) Executive Director, Place Development,

2012-13

- Reported to the CEO and Board responsible for to strategic direction and planning, business development and management leadership of a multi-disciplinary team of professionals
- Led of interagency government taskforces, high-level negotiation and stakeholder engagement, working with Government Ministers, Boards and Government Executive.
- Led direction, inception and delivery of strategic planning and urban renewal of key foreshore precincts and sites around Sydney Harbour. Responsible for design and delivery of capital program including infrastructure and public domain.
- **Notable achievements:**
- Leadership and facilitation of inter-agency task force and projects for Circular Quay Strategic Framework and Bays Precinct Strategic Framework
- White Bay Power Station remediation and adaptive re-use plan
- Rozelle Rail Yards Master Plan

Deputy Government Architect, Government Architect's Office (GAO)

2007-12, 2014-5

- Management of a multi-disciplinary team of up to 100 design professionals and support staff providing consultancy services to Government agencies on a commercial basis. Annual revenue \$20m+
- Responsible for strategic direction, financial planning, business development, marketing and promotion
- Provided strategic design advice to the Government Architect and Government clients and Government Ministers
- **Notable achievements:**
- Redfern Waterloo Built Environment Strategy (SMDA)
- Sydney Fish Markets redevelopment and feasibility (SPA)

- Harold Park Master Plan (City of Sydney)
- North Parramatta Government Precinct Master Plan (Landcom)
- Oran Park Town Centre Strategy (Landcom/DET)
- Westmead Health Education Precinct: uplift potential due to Metro station (UrbanGrowth)
- Newtown Station renewal (Railcorp)
- Sydney Harbour Bridge and Windsor Bridges urban design (RTA)
- Large Residential Centres Strategic Alignment: 3 Master plans (ADHC)
- Teacher Housing – various regional NSW projects (THA)

Sydney Olympic Park Authority, Executive Director, Placemaking

2004-2006

- Member of the SOPA Executive team reporting to CEO and Board
- Management of a multi-disciplinary team (including architects, planners, engineers, QSs, environmental scientists and project managers)
- Management of business unit, projects, people and budgets
- Inception, planning, design, stakeholder management and contract management of all SOPA development and capital projects; Development of planning, policy & design standards
- Planning and building assessment and approvals
- Developer negotiation: various projects
- Government Agency liaison: Ministerial briefings, high-level negotiations with Department of Planning, RTA, Parramatta and Auburn Councils, Waterways
- **Notable Achievements:**
- Master Plan 2025, developed new vision and Master Plan for Sydney Olympic Park post-Olympics including stakeholder consultation, transport /traffic strategy, development feasibility, public domain strategy, implementation strategies, Infrastructure Funding Plan; Delivery of parkland capital works program, All award-winning projects; Policy development: energy and waste management and affordable housing strategy

Director, Helen Lochhead Urban Projects Pty Ltd

1996-2006

- Multiple Master plans and DCPs including Rozelle Hospital & Gladesville Hospital Master Plans, Manly Town Centre, Rouse Hill Town Centre, Northbridge and Mascot Station Precinct; public domain & multi-unit housing projects, University of NSW Master Plan and Richmond TAFE Master Plan (with JTCW), Various projects in The Rocks.
- **Clients:**
- State Government: Sydney Olympic Park Authority, Department of Planning / Urban Design Advisory Service (UDAS), City West Development Corporation, Sydney Harbour Foreshore Authority, Landcom, ACT Land Development Agency
- Local Government: City of Sydney, Willoughby, Canterbury, Manly, Woollahra, Kogarah Councils

City of Sydney, Manager, Urban Design, 1992-5, Director, Special Projects, 1995-96,

1992-6

- **Notable Achievements:**
- City Improvements Program: inception, development, programming and budgeting of five-year capital works program in preparation for the Sydney Olympics (\$250 million)

- Sydney Spaces: 29 concepts for the city's streets, squares and parks: project director, exhibition publication and City Talks Program, with 50 designers' ideas for Sydney's public realm. Chifley Square design

Perkins Eastman New York, 1983-89

- **Notable Achievements:**
- Kips Bay master plan New York (2.5 ha in Manhattan, 2000 apartments \$324 million development)
- Newport City: Master plan, open space design & development guidelines for mixed-use development on the Hudson River (160ha \$10 billion development)
- La Guardia Airport, New York: Urban design guidelines (\$30 million redevelopment)
- Fells Point, Baltimore: Master plan & development guidelines for a mixed-use waterfront development (10 acres, \$120 million development)
- The Pike, Long Beach, California: Master plan for mixed-use development (5.2 ha \$1.2 billion)
- Festival Marketplace, Birmingham, England: Schematic design for a mixed commercial waterfront development
- Battery Park Master plan: Master plan, open space design & development guidelines
- Downtown Honolulu waterfront redevelopment: urban design framework & water use plan

PROFESSIONAL RECOGNITION

- Royal Institute of British Architects (RIBA) Honorary Fellow, 2020
- RAIC (Canada) Honorary Fellow, 2020
- Australian Financial Review (AFR) 100 Women of Influence, 2019
- American Institute of Architects (AIA) Presidents Medal, 2019
- AIA Paula Whitman Prize for promoting gender equality in the profession 2019
- AIA NSW Lloyd Rees Award for Urban Design, 2019, Harold Park Precinct
- City of Sydney Lord Mayor's Prize for urban design excellence, 2019, Harold Park Precinct
- AIA NSW Presidents Prize for contribution to the design of the built environment of Sydney, education & profession
- AIA and AILA Merit Awards for Urban Design 2015, Wollongong Civic Spine
- Lincoln Loeb Fellowship, Harvard University Graduate School of Design & Lincoln Institute of Land Policy, 2013-14
- AIA Marion Mahony-Griffin Prize 2013, for a distinctive contribution of a female architect to the profession
- AILA National Sustainability Award for leadership in adaptation to climate change and promotion of sustainable Australian settlements (with OEH) 2011- Greencover Guidelines
- Winston Churchill Fellowship 2010
- National Association of Women in Construction (NAWIC) Vision Award 2009 for leadership in construction industry
- AIA Merit Award for Urban Design 1993- The Rocks Precinct, Sydney

HELENA MILLER

DIRECTOR

Helena Miller is a founding Director of MG Planning Pty Ltd and is a highly skilled and experienced planning expert with a strong reputation for excellence in the field. Helena has an extensive knowledge of all facets of planning within the New South Wales system specialising in both strategic and statutory projects. She is also an experienced expert witness in Land and Environment Court matters and appointed expert panel member on a number of Local Planning Panels.

EXPERTISE

Helena possesses a thorough and extensive knowledge of development assessment processes having extensive experience in the preparation and assessment of complex and controversial development applications including State significant projects. Her ability to successfully negotiate improved outcomes on behalf of clients is a significant strength. Helena provides high quality analytical advice and brings a practical approach to all projects. She has the ability to balance and weigh the full range of issues and ultimately to arrive at solutions which are pragmatic and which address competing interests.

In addition to the preparation of planning proposals and development application work, Helena also has considerable experience in release area, “green fields” site planning and urban infill planning. She has prepared comprehensive environmental studies and planning instruments and is skilled at identifying appropriate planning controls, particularly for infill development.

RECENT EXPERIENCE

Helena’s recent experience includes:

- Preparation and assessment of Planning Proposals for major projects including proposals for a 50 storey vertical innovation village in Haymarket (uplift gained from 9:1 to 21.5:1 FSR), a residential development within St Leonards South and redevelopment of the Rockdale Interchange Precinct and Lindfield Village Hub sites.
- Independent assessment of development applications for Parramatta Square redevelopment on behalf of the City of Parramatta and the Sydney Central City Planning Panel. Projects have included commercial office towers up to 55 storeys adjacent to Parramatta Station, the new iconic Council building connected to the historic Parramatta Town Hall and Parramatta Square Public Domain.

- Preparation and assessment of planning applications for major developments (e.g. Cloud Arch, Barangaroo Headland Park, Sydney Theatre Company, Gunyama Park Aquatic and Recreation Centre, various Solar Farms, Green Square Library).
- Provision of planning advice on highest and best use in relation to compulsory acquisition of land for major infrastructure projects (e.g. Sydney Metro)
- Part 5 environmental impact assessments including preparation and assessment of EIA / REF reports and provision of advice (e.g. NSW Police Stations, Public Housing and HealthNSW Patient Transport Facilities,)
- Provision of expert planning advice on projects (clients include Barangaroo Delivery Authority, Landcom, Department of Planning, Industry and Environment and City of Sydney)
- Preparation of planning controls and development guidelines for release areas, town centres and major redevelopment sites (e.g. Macarthur Gardens North, Edmondson Park South, Wentworth Point)
- Expert witness testimony in Land and Environment Court cases

QUALIFICATIONS

- Bachelor of Urban and Regional Planning, UNE, Grad. Dip. Natural Resources Law (Uni. Wollongong)
- Registered Planner and Member Planning Institute of Australia

EXPERT PANELS

- City of Sydney Local Planning Panel – Planning expert (appointed April 2019)
- Wollongong City Council Local Planning Panel - Planning expert (since 2008)
- Campbelltown City Council Local Planning Panel – Planning expert (appointed March 2018)
- City of Sydney Determination Review Panel - Independent expert member
- Will2Live Charity – pro-bono work for homeless charity

[REDACTED]

[REDACTED]

[REDACTED]

[REDACTED]



Penny Murray

Partner, Addisons Lawyers

Details

Penelope Louise Murray (nee Hollott)

[REDACTED]
[REDACTED]
[REDACTED]
[REDACTED]

Qualifications

Bachelor of Science (Resource and Environmental Management), Macquarie University, 1997

Bachelor of Laws, Macquarie University, 1998

Work Experience

Environment and planning specialist lawyer with 20 years' experience in advising on planning approval pathways and appeals (including DA appeals, civil enforcement and judicial review), environmental compliance and enforcement, compulsory acquisitions, valuation of land and property rights such as easements, biodiversity, contaminated land, Aboriginal land rights, local government law, natural resources and heritage.

Advised on a wide range of small, medium and large urban projects, coal mining and infrastructure projects.

Work History

Since 2018: Partner, Addisons Lawyers

2012 –2017: Partner, DibbsBarker Lawyers

1999-Nov 2012: Solicitor and then Partner (5 years), Minter Ellison Lawyers

Selection of Relevant Experience

Australian Technology Park – Penny is advising Mirvac on its planning approval strategy for Australian Technology Park. The land has historical contamination and State and locally listed heritage items. Penny advised on staging, the planning pathway, voluntary planning agreement, draft conditions of approval and reviewed the environmental assessment reports prior to lodgement.

Epping town centre– Provided input to the clause 4.6 objection and assisted in submissions to the Council and the panel for the approval of a residential flat building being transit oriented development at Epping Station.

Gateway, Circular Quay – Advised Dexus on its retail podium redevelopment at Gateway, Circular Quay. Penny's role included advising on the heritage floor space controls, securing heritage floor space transfers, obtaining access for construction purposes and negotiating a voluntary planning agreement with Council.

Willowdale – Penny advised Stockland on a co-operation agreement with a landowner and a works in kind agreement for developer contributions for this residential development.

Westpac head office – Penny advised Mirvac on its redevelopment of the ground plane and podium for 275 Kent Street, Sydney. This site has complicated titling and planning approvals. Her role included ensuring that a new voluntary planning agreement replaced earlier commitments by a developer and considered the underlying and overlying TfNSW (Wynyard Walk) and RMS (Western Distributor) ownership issues. This required detailed stakeholder discussions with TfNSW and the City of Sydney to effect this development.

Inner West Council – advised the Council on multiple land acquisition matters including the proposed resumption of a 9ha parcel of land that was a former tip and required ongoing environmental management.

Perisher Blue – Penny has provided advice to Perisher on a range of planning and environmental issues associated with their operations in a sensitive national park location where it has its own sewage treatment facility and bespoke planning controls.

Macquarie Park – Penny has advised Dexus and Stockland on their office redevelopments in Macquarie Park including negotiations with Council and RMS on the approval and in respect of the Stockland development - a voluntary planning agreement.

Railcorp. Penny advised Railcorp on an agreement with UrbanGrowth for the release of land for development for affordable housing at Eveleigh. Her role was to provide input to the property lawyers on planning and environmental risks and negotiate the clauses relating to such issues.

Coombes Property Group – Advised Coombes Property Group and Mirvac on the planning proposal and voluntary planning agreement for 505 George Street Sydney which if constructed will be the tallest residential tower in the Sydney CBD.

Xstrata – For over 3 years Penny provided advice in relation to the West Wallsend, Ravensworth, Baal Bone and Glendell mines including advice on securing planning approvals, EPBC Act approval requirements, water licensing, compliance with EPA licences, responding to EPA investigations and defending EPA prosecutions. For each large mine expansions Penny was involved in reviewing and advising on draft environmental assessments with the consultant team prior to lodgement with the Minister. Penny also advised on the Statement of Commitments and biodiversity offset strategies.

Eastwood Mall – Penny advised Yuhu on its development application for the redevelopment of the Eastwood Shopping Mall precinct including the clause 4.6 objection and voluntary planning agreement.

Elanor and Dexus – Penny acted for Elanor Investments on its environment and planning due diligence for the purchase of Auburn Shopping Central and for Dexus on the purchase of Sturt Mall in Wagga Wagga and gave planning advice on Tweed Shopping Centre. The due diligence components included consideration of contamination risks, development potential and constraints on existing operations.

NSW Government. Penny provided planning law advice in relation to the strategy for divestment of properties in a confidential location. Her role included advising on subdivision, servicing and infrastructure upon subdivision and managing heritage constraints.

Gannet Developments – Advises Gannet Developments on its residential flat building and boarding house developments on the northern beaches. Acted in multiple Land and Environment Court appeals all of which (excluding one modification and one DA) were settled at conciliation conferences.

Camellia– Penny acted for a landowner on the remediation and divestment strategy of land at Camellia. The land was listed on the significantly contaminated land register and was subject to a voluntary management agreement at the time of its disposal.

RSL Lifecare – Penny has provided planning approval advice to RSL Lifecare for its assets at Port Macquarie, Linton and Dee Why.

Grocon – Provided planning advice in respect of the staged approval for the redevelopment of 161 Castlereagh St now called Liberty Place and the ANZ headquarters including advice on transitional

provisions in the local environmental plan, modification powers, floor space ratio and permissibility for certain uses.

Pagewood contamination – Represented a developer landowner in relation to an appeal by a former owner in respect of a management order issued by the EPA for the remediation of contaminated soil and groundwater. The appeal was resolved by the parties resulting in a voluntary remediation agreement.

Ecologically sensitive land– Provided planning advice in relation to a community title subdivision adjoining a National Park at Seven Mile Beach near Forster. The site was ecologically sensitive and subject to State and local planning controls. Penny advised on the drafting of the planning agreement and the proposed controls in the draft amendment to the LEP and reviewed the various environmental management plans submitted to support the development and ensuring ongoing commitments with respect to environmental protection.

Maritime NSW (as it then was) – advised on planning approval issues, its duty as a landowner and conducted defences of numerous appeals in the Land and Environment Court arising out of Maritime's refusal or deemed refusal to grant development consents for various developments below mean high water mark on Sydney Harbour.

Existing use rights – provided numerous advices on existing use rights including evidence, expansion and rebuilding. This has been for a range of premises including tourism, service stations, registered clubs, fruit shops and recreation facilities.

Industrial – acted for Walker corporation in its planning approvals for Erskine Park, for Crown equipment at Smithfield and for Dintel at Kemps Creek. Advised on numerous acquisitions of industrial properties for Dexco including advice on planning and environmental risks e.g. The Grounds at Alexandria.

Residential – acted for two landowners in Ku-ring-gai Council in relation to applications for demolition and construction of a dwelling in a heritage conservation area and subdivisions and dual occupancy of a heritage item. Advice has also been given on greenfield residential subdivisions in Moss Vale, Muswellbrook, Huntlee, Bonnyrigg and Wilton.

Heritage – have advised on numerous matters with heritage significance including proposals relating to the former post office at Potts Point, St John's Anglican Church at Darlinghurst, an Islamic school, Australian Technology Park, Morpeth House, a boarding house in Stanmore, a former Commonwealth bank branch in Dee Why

Retirement villages – provided advice to Lend Lease Primelife on its retirement village development which incorporated a heritage item being Morpeth House. The development involved a heritage agreement with the heritage Council of NSW to ensure the maintenance of the heritage item in perpetuity. Advice has also been provided in relation to a Becton development in Wahroonga, Aevum (now Stockland) developments at Killara and Ashfield and a proposed development in the Southern Highlands.

Optus – I provided advice to Optus on numerous telecommunication planning approval issues relating to the rollout of their mobile network.

Personal Directory Rankings/Awards

Listed as a recommended lawyer in Asia Pacific Legal 500 for 2017 in real estate.

Listed as an expert in Planning and Environmental Law in Best Lawyers for 2014-2020.

Penny is also listed as a Leading Planning and Development Lawyer and Recommended Environment and Climate Change Lawyer– NSW in Doyle's Guide to the Australian Legal Profession.

Penny received a commendation at the Urban Development Institute of Australia NSW Women in Leadership Awards for Excellence in 2015 and a Distinguished Service Award from Urban Development Institute of Australia NSW in 2018.

Appointments/Committees

Sydney City Council Local Planning Panel (Alternate Member)

Law Society of NSW Planning and Development Committee

Urban Development Institute of New South Wales Planning Policy Committee

Radiation Advisory Council, expert member (lawyer)

Presentations and Publications

“Development appeals and reviews” University of NSW Continuing Legal Education Department program, 2014

“NSW Regulatory Framework for CSG and its limitations” CleanUp 2013, 5th International Contaminated Site Remediation Conference

“Biodiversity offsetting Policy” Akolade’s 3rd Environmental and Planning Law Forum, Sydney, October 2013

“Lessons from objector merit appeals to the Court” Legalwise Seminars, Sydney, September 2013

“Managing risk: obtaining DA approval” Urban Development Institute of Australia, 2013

“Contaminated Land Law and Waste” Legalwise Seminars, Sydney 2013

“Environmental Regulation Issues for valuation and management of properties” Australian Property Institute, 2013

“Contaminated Land: The Original toxic Asset” Australian Property Institute

“Environmental Enforcement: Recent legislative updates and case law” Legalwise

“Environmental Compliance: issues and Opportunities” to Anglo Coal Australia Safety and Sustainable Development Conference

“Taking Control of Development Sites” to Grant Thornton, Deloitte and Ernst & Young

“Conducting Planning Appeals in NSW” NEER Seminars, Continuing Education for the Management of the Built Environment”

“Clause 4.6 objections” Planning Institute of Australia, 2019, 2020

Australian Environment Review Volume 27 No. 5 2012 “Climate change considerations in environmental impact assessment in Victoria, NSW and Queensland, co-author

Australian Environment Review 2012 “New obligations relating to pollution incidents and publishing environmental monitoring results in New South Wales”

Australian Environment Review 2011 “Part 3A of the NSW Planning Act to be repealed and replaced with state significant development and infrastructure regime”.

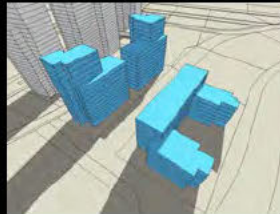
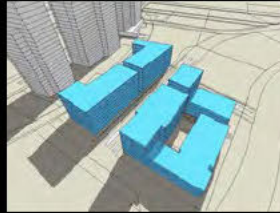
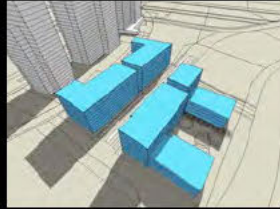
Australian and New Zealand Property Journal 2010 “The original toxic asset: contaminated land”

Australian Construction Law Bulletin, 2006, “End to retrospective construction certificates in NSW creates new risks”

Keeping Good Companies, Journal of the Chartered Secretaries Australia Ltd, August 2003 “Clayton consent: when is a development consent not a consent?”

Local Government Reporter, December 2002 “Adjoining land owner’s right to access a public road held to be a compensable ‘interest in land’”

Law Society Journal, September 2002 “Property owners can claim compensation if an adjoining public road is resumed”.



brendan randles architect



BRENDAN RANGLES - PROFESSIONAL BACKGROUND

I have a degree in Architecture from the UNSW (honours, first class), a Masters of Urban Design from the Polytechnical University of Catalunya (UPC) in Barcelona and teach urban design at a senior and masters level at the UNSW; this reflects my genuine interest in the City, the culture of Urban Design, in the design quality of new building proposals, in landscape and the public domain, in sustainability and the environment and residential innovation. I have designed large buildings and residential environments locally and internationally. This gives me a key insight into the nature of development, the environment, local authorities, feasibility, sustainability, structure, construction detail and developmental objectives. It has also given me a keen knowledge of the aims and objectives of local council policies, the various LEPs for each area in which I work, development control plans and the many policies and factors that determine built form throughout a broad range of local government areas.

After many years working for major architectural firms in Sydney, Barcelona, Palermo and Berlin, I was the founding Director of the urban design and architectural firm Randles Hill, which became Randles Straatveit Architects in 2001. This firm successfully completed many projects of all scales locally and internationally, which included dwellings, retail, apartment buildings, residential complexes and large master plans (eg. The city centres of Wellington and Manukau, New Zealand). As director of the firm, I was not only responsible for all major decisions regarding design, documentation, management, employment, property and finance, I also consulted with and presented projects to private and public clients throughout Australia and New Zealand. Please see selected projects below.

I now run my own architectural and urban design consultancy specializing in large-scale architectural and urban design. In this role, I provide urban design advice and design large mixed use projects and competitions for commercial firms; represent Councils on court matters and Section 34 conferences; and teach urban design at Masters level at the University of New South Wales. I am a member and sometimes Chairperson of design review panels at St George (which encompasses Hurstville, Kogarah and formerly Rockdale local government areas), Sutherland Shire, the Parramatta Design Excellence Panel and Wollongong. I am therefore familiar with the broader aims of design panels as well as the specific procedures, requirements and conduct of design review and independent and assessment panels (IHAP). I am a member of the Planning Panel (formerly IHAP) at Wollongong City Council.

Apart from designing large projects, my day to day professional life gives me great experience and insight into design constraints, successful design strategies, local codes (such as Sepp 65 and the ADG), industry norms, performance standards and environmental performance throughout the metropolitan area. I am a registered architect in NSW (Number 6152) and am a respected member of the professional community. My skills and experience include :

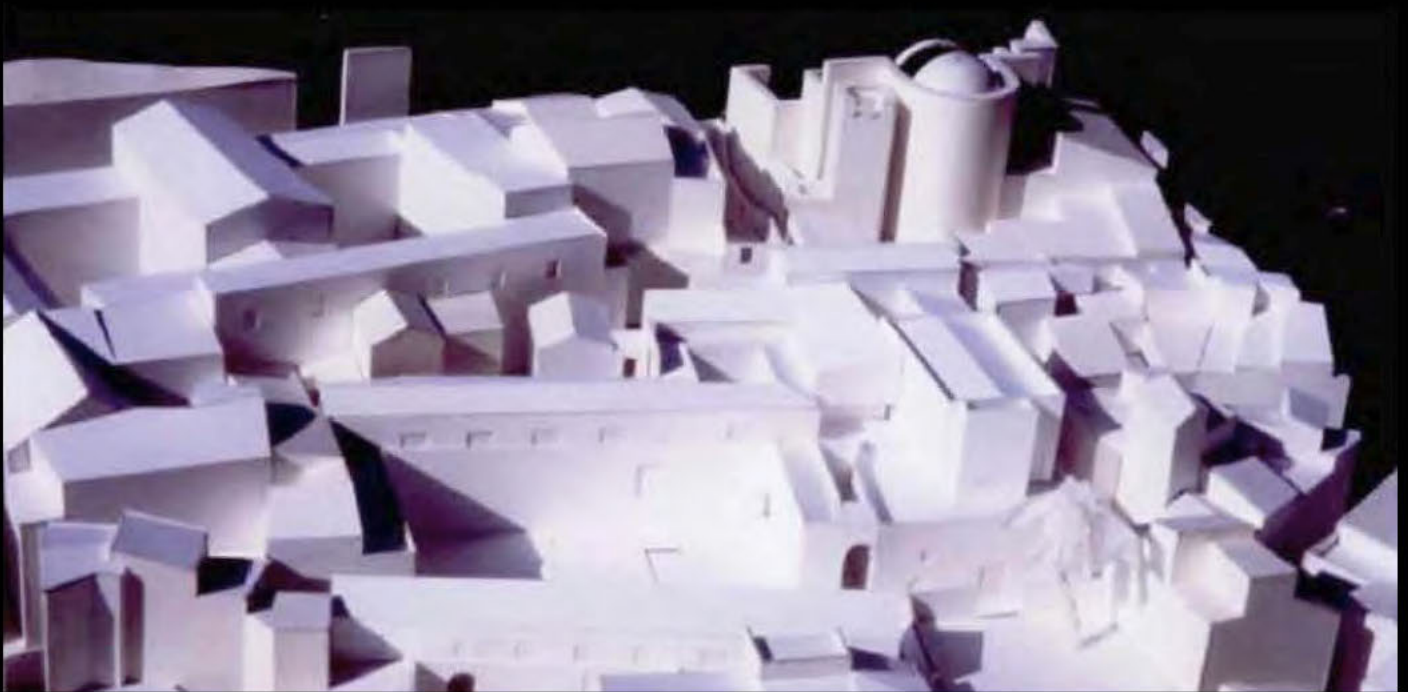
- Bachelor of Architecture, Honours (First Class) UNSW, 1989
- Masters of Urban Design, UPC Barcelona, 1996
- Invited to work with Alvaro Siza Vieira on a town reconstruction project in Sicily, 1992 - 3
- Invited to teach architecture at the University of Palermo, Italy, 1992 -3 and 1996
- Established Randles Hill Architects, 1994 (Randles Straatveit Architects, 2001)
- Numerous large scale projects for public and private clients, locally and overseas (many published)
- Teaching architectural and urban design at each of Sydney's universities for the last 20 years
- Member of the St George Design Review Panel and Parramatta Design Excellence Panel
- Member and Chairperson of the Sutherland Architectural Review and Advisory Panel (ARAP)
- Member of the Wollongong and Bayside Independent Hearing and Assessment Panels (IHAP)
- Currently teaching urban design with Professor James Weirick at UNSW
- Invited jury member on various large scale residential competitions
- First Place, major mixed use building, Harris St Sydney (COS Design Excellence – with Architectus)
- First Place, residential building, Epsom Road Zetland (COS Design Excellence – with Architectus)
- Chairperson of Sutherland ARAP and Wollongong Design Review Panels
- Expert for Wollongong City Council for numerous Court matters and Section 34 conferences
- Invited expert to design juries for numerous design competitions

I have been the recipient of architectural and urban design awards (the most recent being industry and PIA awards for Affordable Housing at North Eveleigh – with Architectus, for whom I have undertaken a number of large scale projects in Canberra, Sydney and China in the last five years). As project architect, I have won two large City of Sydney residential design competitions in the last few years (Harris Street Ultimo – now completed and Epsom Road Zetland), demonstrating a high level of design skill, a thorough understanding of design standards and controls and a capacity to explain complex ideas.

APPENDIX 1

CURRICULUM VITAE

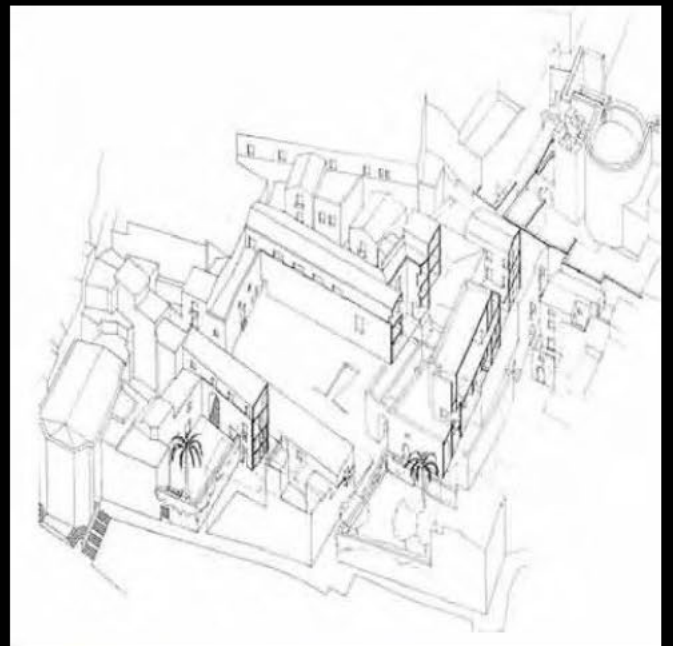
HSC	St. Kevin's College, Melbourne	1978
Bachelor of Architecture	University of New South Wales	1989
	Honours (First Class) Final Project: East Darling Harbour Urban Renewal	
Master of Urbanism	Universitat Politècnica de Catalunya, Barcelona	1991 – 3
	"Periphery As A Project" Professor Manuel de Sola-Morales, Director	
	Major Urban Projects include Alexanderpolder, Rotterdam (Manuel De Sola-Morales) Frankfurt Port, (Enric Miralles) Princeton, USA (Adrian Geuze, Willem Jan Neutelings) Llobregat Delta, Barcelona (Joan Busquets, Christian Devilliers) Eastern Venice region, Italy (Luciano Semerari) Antwerp periphery (Marcel Smets)	
	Written texts include Americas Middle Landscape (or Peter Rowe, Harvard) Berlin Wim Wenders representative city (or Rancizka Bollerey, Del t) New Centrality and Representation (or Pier Luigi Nicolini, Milano) Hong Kong: diet and urban ecology (or Martinez-Alliez, Barcelona) Dubai: an urban project in the UAE (or De Sola-Morales, UPC)	
Sydney	Denton Corker Marshall Architects	1988 – 90 Student Architect
	Paul Berkemeier Architects	1988 – 90 Graduate Architect
Barcelona	Serra Vives Architects	1991 Senior Architect
Palermo	Alvaro Siza Vieira (Porto) + Roberto Collova (Palermo) Architects in Collaboration	1992 – 3, 1996 Senior Architect
Berlin	Birgitt Welter Architect	1993- 4 Senior Architect
Sydney	Randles Hill Architects (former partnership)	1994 – 2001 founding partner, architect and urban designer
	Randles Straatveit Architects P/L	2001 – 2013 Director
	Brendan Randles Architect	Current Principal
	Projects	large scale residential large scale urban design and masterplanning detached houses design review and independent hearing panels court and section 34 conferences
Design Review Panels	Sutherland Shire Council (ARAP) Georges River Council Parramatta (DEAP) Wollongong City Council	Panel Member and Chairperson Panel Member Panel Member Panel Member and Chairperson
IHAP	Wollongong City Council Bayside Council	Panel Member Panel Member
Teaching	Masters of Urban Design + Development, UNSW Final Year Landscape, UNSW Final Year Architecture, UNSW Final Year Architecture, University of Sydney 4th Year, University of Palermo	Lecturer/ tutor, current Lecturer/ tutor, 2006 – 12 Lecturer, 2007 tutor, 2004 tutor, 1994, 2001
Expert Witness	Section 34 Conference, Wollongong Section 34 Conference, Wollongong	May 2017 August 2017



sa em (s za) - study mode



sa em (s za) - s te



sa em (s za) - axonometr c



ber n (co ova)



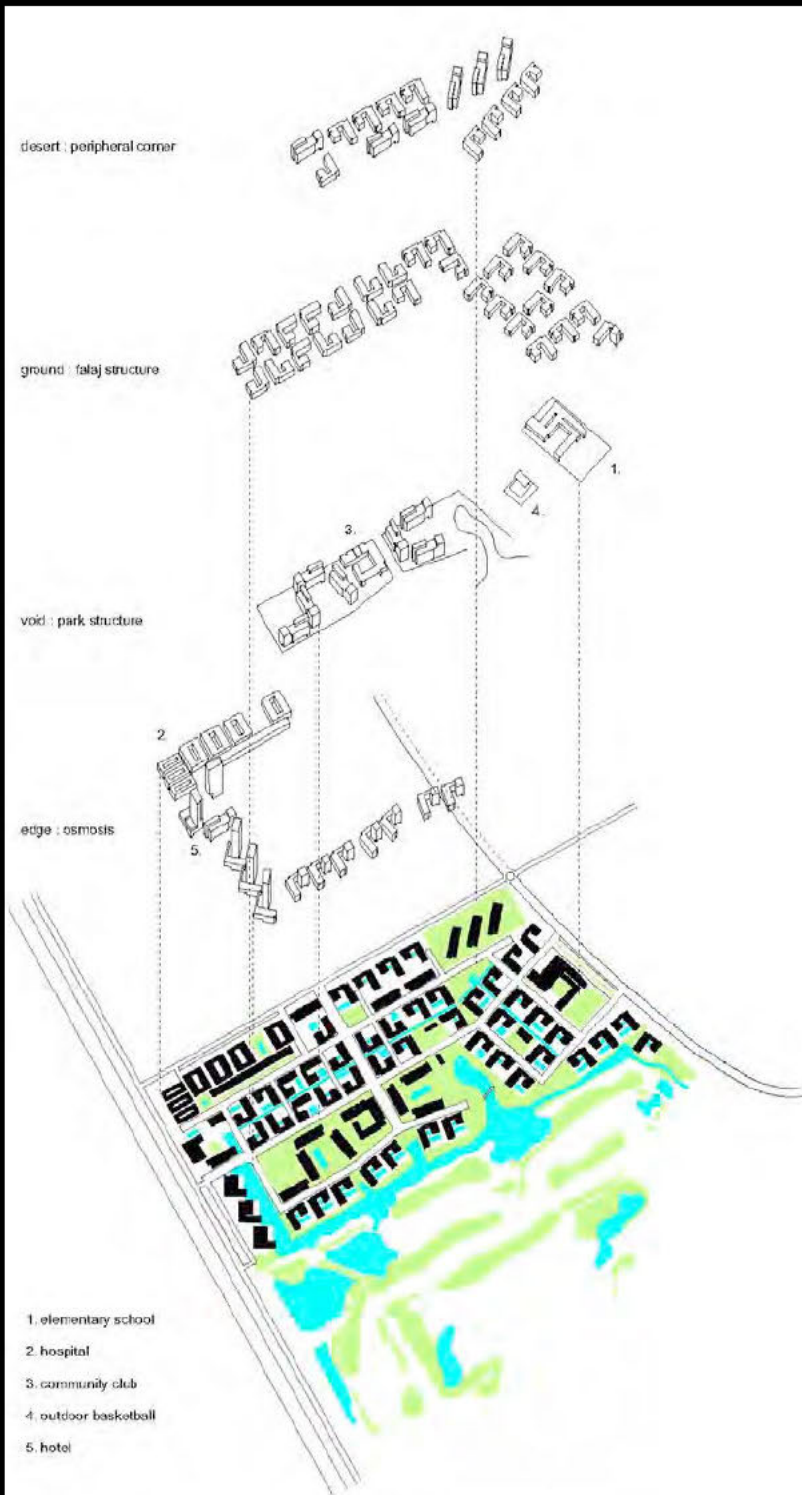
ge a (co ova)



barce ona (serra v ves)



selection of european work experiences (1992 - 95)



duba (masterplan)



eastwood (study model)



merry beach (twigh shot)



backtown (mixed use)



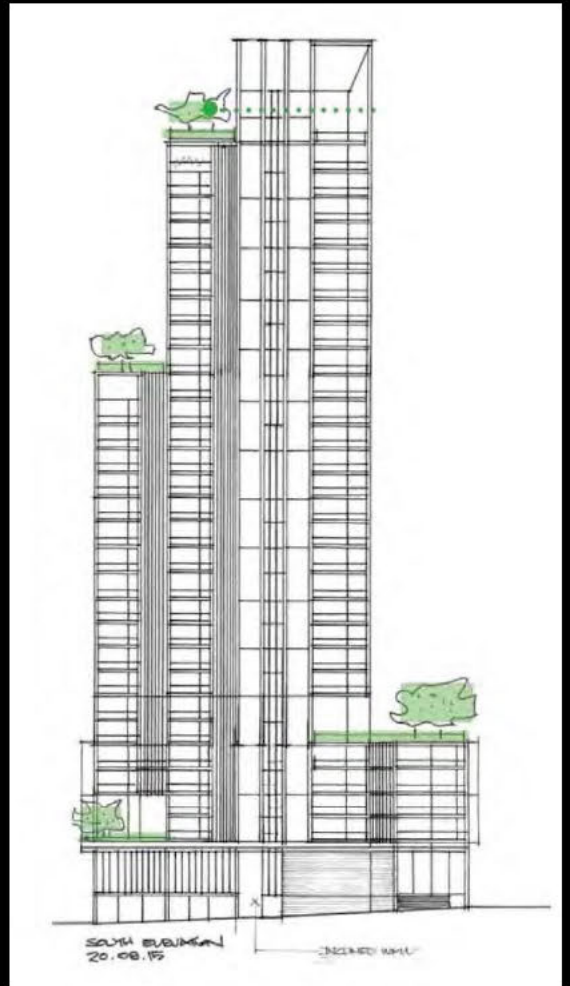
north eve e gh affordab e hous ng - bu t



k ngston foreshore ACT - bu t



harr s st - compet t on first pr ze - nominated 2020 AIA Awards



meadow bank apartments - compet t on

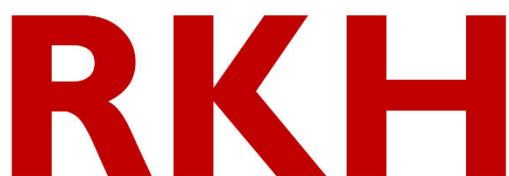


macquar e park - n documentat on



epsom road - compet t on first pr ze - n documentat on

selection of residential projects designed for architectus (2014 - 20)



ROMEY.KNAGGS HERITAGE

PETER ROMEY
DIRECTOR



EXTERNAL ROLES

Expert Member, City of Sydney & Randwick City Council Local Planning Panels

Convenor Australia ICOMOS World Heritage Advisory Committee.

Former Member, NSW Heritage Council Approvals Committee.

Former Member, Tasmanian Heritage Council.

Historic Environment Editorial Committee (Journal of Australia ICOMOS).

Deputy Chair & Board Member, AusHeritage.

Member, University of Sydney Master of Heritage Conservation Advisory Committee.

EXPERT WITNESS

3-5 Lynn Ave, Point Frederick—Client: Central Coast Council

28a Water Street, Wahroonga—Client: Mr Adam Frith.

48 Dudley Street, Coogee—Client: Norton Rose Fulbright, for Randwick City Council.

19 Pine Avenue, Little Bay—Client: Marsdens Lawyers, for Randwick City Council.

35 Water Street, Wahroonga*—Client: Storey & Gough, for Bellevue Projects.

114–116 Rooty Hill Road South, Rooty Hill*—Client: Landerer & Co., for Universal Property Group.

106–108 Redfern Street,

INTRODUCTION

Peter has had more than 30 years' experience in most aspects of heritage conservation, working in consultancy firms, government organisations and as a heritage site manager.

Peter specialises in the provision of strategic input into the development and management of heritage buildings and places. Peter has also participated in many cases at the Land and Environment Court as an expert witness, and in undertaking peer reviews of heritage reports.

Prior to establishing Romey.Knaggs Heritage in 2016, Peter was for eight years a Partner at GML Heritage. Between 1999 and 2006 he was the Director of Conservation and Infrastructure at the Port Arthur Historic Site in Tasmania. He has also held senior heritage posts at the City of Sydney, the NSW Heritage Branch and as an architect in private practice.

HERITAGE ADVICE PROJECTS

Central Coast Conservatorium of Music, Heritage Impact Assessment and Heritage Advice—Client: CCCoM

Hoddle Grid Melbourne Project—Client: Context for Melbourne City Council.

499-501 Kent Street, Sydney, Heritage Peer Review—Client: Oakstand.

St Paul's Cathedral, Melbourne, Heritage Advice—Client: Root Partnerships.

Oxford St 43-53, Epping, Heritage Peer Review—Client: Currie & Brown.

Davistown & Empire Bay Wharves, Heritage Impact Assessment—Client: Central Coast Council

The Entrance Ocean Pools, Heritage Impact Assessment—Client: Central Coast Council.

Wynyard Place Project, Sydney, Heritage Impact Assessment and Heritage Advice—Client: GML Heritage.

Munn Street Stores, Millers Point, Heritage Advice—Client: GML Heritage.

Former Bonds Spinning Mills Redevelopment Project, Pendle Hill, Heritage Advice*—Client: Dyldam.

Central Park (former CUB Brewery), Chippendale, Heritage Impact Statement, Heritage Advice*—Client: CUB & Frasers.

Common Ground Sustainable Housing Project, Heritage Impact Statement, Heritage Advice*—Client: Grocon and Housing NSW.

Commonwealth Bank, Martin Place, Sydney, Due Diligence Advice*—Client: Savills Project Management.

ANZ Bank, Martin Place Heritage Impact Statement, Heritage Advice*—

Redfern*—Client: Colin Biggers & Paisley, for Mr Randolph Griffiths.
10 Victory Street, Clovelly*—
Client: Marsdens Law Group, for
Randwick City Council.

40 Marcel Avenue, Randwick*—
Client: Marsdens Law Group, for
Randwick City Council.

12-28 Parramatta Road, Summer
Hill*—Client: HWL Ebsworth, for
Prouds Jewellers

232 Macquarie Street, Hobart
(Tasmanian Resource Management
and Planning Appeal Tribunal)*—
Client: Hobart City Council.

Pasadena Hotel, Church Point*—
Client: Boston Blythe Fleming.

Yarralumla Brickworks, Canberra
(ACT Civil and Administrative
Tribunal) (Preliminary Opinion)*—
Client: Clayton Utz.

119–212 Queen Street, Woollahra
(Preliminary Opinion)*—Client:
Luise Elsing.

1 Lawrence Road, Kenthurst*—
Client: Hills Shire Council.

EMPLOYMENT

Director, Romey.Knaggs Heritage,
2016 – Present.

Partner, GML Heritage, 2008–2016.
Senior Associate and Team
Manager, GML Heritage, 2006–
2008.

Director, Conservation and
Infrastructure, Port Arthur Historic
Site, 1999–2006.

Manager, Heritage, City of Sydney,
1992–1999.

Senior Heritage Architect, Heritage
Branch, NSW Department of
Planning, 1989–1992.

Principal (sole practitioner), Peter
Romey, Architect, 1987–1989

*GML Heritage projects

Client: Charter Hall.

WestConnex Parramatta Road Revitalisation Project, Thematic History*—
Client: Urban Growth NSW.

REVV Site, Pyrmont, Heritage Impact Statement and Heritage Advice—
Client: Citta Property Group.

Intermodal Freight Terminal Project, Moorebank, Peer Review of European
& Aboriginal Heritage Impact Assessments—Client: Department of Finance
& Deregulation.

MAJOR INFRASTRUCTURE PROJECTS

Metro West Project, Heritage Advice—Client: GML Heritage.

WestConnex Stage 3, Heritage Advice—Client: GML Heritage.

Sydney Metro Project, Heritage Advice—Client: GML Heritage for Cox
Richardson/Hassell/Parsons Brinckerhoff/AECOM.

Sydney CBD and South East Light Rail Project, Heritage Impact Assessment
and Heritage Advice*—Client: Parsons Brinckerhoff.

North West Rail Link, Sydney, Heritage Impact Assessment and Heritage
Advice*—Client: AECOM.

WestConnex Project Stage 1B, M4 East, Sydney, Heritage Impact
Assessment and Heritage Advice*—Client: AECOM.

Canberra Capital Metro Project, Preliminary Heritage Assessment and
Heritage Advice*—Client: Parsons Brinckerhoff.

Parramatta–Epping Rail Link Preliminary Scoping Study, Heritage Advice*—
Client: Transport for NSW.

Western Express Program and City Relief Line, Sydney, Heritage
Advice*—Client: Transport for NSW.

Sydney Metro Network Stage 2 (Central to Westmead), Heritage
Advice*—Client: Sydney Metro Authority.

Sydney Metro Network Stage 1 (Rozelle to Central), Heritage Advice*—
Client: Sydney Metro Authority.

CONSERVATION MANAGEMENT

Kangaroo Bluff Historic Site (Tas.) HAMP—Client: Clarence City Council.

Sydney Harbour Bridge, Conservation Management Plan—Client: NSW
Roads and Traffic Authority.

Munn Street Stores, Millers Point, CMP—Client: GML Heritage.

Museum Station, Sydney, Conservation Plan*—Client: Transport for NSW.

Commonwealth Offices Building, Melbourne, Conservation Plan*—Client:
Department of Finance & Deregulation.

HMAS Penguin, Balmoral, Heritage Management Plan*—Client:
Department of Defence, Australian Government.

Royal Tasmania Botanical Gardens, Conservation Management Plan*—
Client: Royal Tasmania Botanical Gardens.

Millers Point Properties, Sydney, Conservation Management Plans and
Strategies*—Client: NSW Department of Housing.

Legion House, Sydney, Conservation Management Plan*—Client: Grocon.

MARCUS TRIMBLE

Academic Qualifications

B.Arch (Hons I), Sydney University 2002

Bsc.(Arch) Sydney University 1999

Professional Affiliations

Royal Australian Institute of Architects

NSW Architects Registration Board, Registration #7626

Scholarships, Fellowships and Awards

- Byera Hadley Traveling Scholarship 2010
- First Class Honors 2002
- Royal Australian Institute of Architects Graduate Prize for outstanding proficiency in Architecture 2002

Teaching Experience

- Design Tutor, UTS 3rd Year Program, 2015
- Design Tutor, UNSW 2nd Year Program, 2011, 2012
- Design Tutor, USYD Graduate Studio, 2009
- Design Tutor, UNSW 3rd Year Murcutt Studio, 2007, 2009
- Design Tutor, UNSW 2nd Year Program, 2006
- Design Tutor, Sydney University, 2003, 2004, 2005
- Professional Practice, UTS, 2012-2014

Professional Experience:

Bennett and Trimble

- Commercial Buildings Design Guide, DPIE 2021 - ongoing
- Complying Development Code - Industrial Buildings, DPIE 2020
- Carlingford West Public School Masterplan, SINSW 2019 - 2020
- Cumberland High School Masterplan, SINSW 2019 - 2020
- Rouse Hill High School Concept Masterplan, SINSW 2019
- Epping South Public School, Site Capacity Study and Concept Options, SINSW, 2019
- Parramatta North Public School, Capacity Study and Concept Options, SINSW, 2019
- Parramatta East Public School, Capacity Study and Concept Options, SINSW, 2019
- 4 Schools Concept Masterplans (Trance 2 and 3 Metro West), SINSW, 2018 - 2019
- Wentworth Point Community Centre and Childcare Facility 2018- 2019
- Devonshire Street Mixed Use Development, 2014 - 2020
- Macquarie University Property Offices, 2018 -
- Epping Developable Lands Concept Plans, Sydney Metro, 2017
- Australian Peacekeeping Memorial, 2008-2017
- Seymour Centre Everest Theatre Upgrades, 2016
- Bank Street Commercial Marina and Temporary Facility, 2017
- Sans Souci Apartments, 2017
- Kensington to Kingsford Design Competition First Place, 2016
- Bays Precinct, Bays Market District Site 2 Capacity Study, 2016
- Bays Precinct, Bank Street District Master Plan, 2016
- Cudgegong Developable Lands Concept Plans, Sydney Metro, 2016
- Volvo Headquarters and Distribution Centre, Brisbane, 2015-2016
- NSW Secondary Schools Entry Renewal Pilot Program, 2015

- 74 Church St Parramatta Masterplan and Planning Proposal, 2015
- Carringbah Town Centre Masterplan and Concept Studies, 2015
- Lidcombe Town Centre Concept Studies, 2015
- Volvo Workplace Accommodation Review, 2014 - 15
- New Public School Facade, Cammeray, 2014 - 15
- Macquarie University Cultural Facilities, 2014
- Sydney University Architecture Homebase Studios, 2014
- William Lane Warehouse, 2013-ongoing
- Eve St Apartment Competition (with SJB), 2014
- Green Square Park and Pool Competition, 2014
- Newcastle CBD Entertainment Precinct Redevelopment, 2014
- Macquarie University Social Learning Space, 2013-2014
- Seymour Centre Masterplan and Refurbishment, 2011-2014
- Devonshire Street Residential Development, 2014 - ongoing
- Epping Town Centre Masterplan, 2013 - 2014 (with Grimshaw)
- Tennyson Masterplan, North Ryde, 2013 (with Grimshaw)
- Brisbane Airport Property Masterplan, 2011-12
- Riverview House, 2009 - 2014
- Paddington Terrace, 2011-2013
- SCAF Fugitive Structures Pavilion Competition, 2013
- Bronte House, 2012 - ongoing
- Student Housing Masterplan, University of Newcastle, 2010-2011 (with Space.Logic)
- Institute for Energy and Resources Masterplan, University of Newcastle, 2010-2011 (with Space.Logic)
- Gold Coast Cultural and Civic Precinct Masterplan, 2009 (won in competition)
- Northbourne Avenue Housing Competition, Canberra, 2011
- Parramatta River Cultural Precinct Competition, 2011
- Kai Tak Hospital Masterplan, Hong Kong, 2010 (with Studio Nield)
- Queen Elizabeth Hospital Redevelopment, Hong Kong, 2010 (with Studio Nield)
- Rose Bay Roof, 2010
- Marrickville House, 2010
- Hurlstone Park House, 2010
- Maroubra House, 2008-09
- Cardboard Cubby House, 2008
- Elizabeth Bay Apartment, 2007-08
- Watsons Bay House, 2007-09

BVN

- UNSW L5 Building, 2005
- UNSW Campus Asia Masterplan, Singapore, 2005
- Carlton and United Breweries Built Form and Urban Guidelines, 2004-05
- Milsons Point, Alfred St Development, 2002-2007, \$50M
- Venice Football Stadium, Italy, 2004-06
- Hurstville Link Building, 2007

Lahz Nimmo Architects

- Student Architect 1999-2001

Articles

27/06/09	Mark Magazine	Durbach Black Practice Review
21/01/07	Mark Magazine	O'Connor Houle - Heide Extension Review
23/04/07	Architecture Bulletin	AIA National Conference Review
10/10/0	Architecture Review	Abundance Venice Biennale Review
08/11/07	Dwell	David Langston Jones - Alexandria Houses Review
07/04/08	Monument	Marsh Cashman Kooloos - Longueville House Review
03/06/08	Monument	Chen Chow Little - Bronte House Review

23/09/08	Dwell	Zulaikha House Review
29/04/09	Architecture Review	Welsh Major - Redfern House Review
26/05/09	Architecture Australia	Lahz Nimmo - Armory Wharf Review
05/06/09	Monument	TZG - Paddington Reservoir Review
29/07/09	Monument	Neeson Murcutt - Whale Beach House Review
24/08/09	Architecture Australia	Urban Islands Review
17/11/09	Artichoke	Hassell - Leo Burnett Review
24/11/09	Monument	Terroir Practice Profile
13/01/10	Architecture Review	Terroir - Burnie Maker's Workshop Review
15/03/10	Houses	Mac Interactive - Redfern House Review
23/03/10	Architecture Australia	Barangaroo Report
18/08/10	Volume/Archis	Megaexterior
12/11/10	Architecture Australia	UTS Masterplan Review
10/01/11	Architecture Australia	The Shape of Things to Come Exhibition Review
12/05/11	Topos	Barangaroo Masterplan Review
26/08/11	Houses	Anthony Gill - Surry Hills House Review
17/12/11	Architecture Australia	Glenn Murcutt Interview

Lectures prepared and presented

11/10/07	AIA Curated Art and Architecture Talks
01/05/09	Parralaxed - AIA National Conference Presentation
06/07/09	Re:Discuss - SONA Conference Lecture
07/07/09	Re:Member - SONA Conference Lecture
14/08/09	Architecture Australia Roundtable on Writing, QLD
19/08/09	Newcastle University Lecture
01/09/09	COFA - Pathways to Practice Lecture
17/09/09	UTS - Architectural Writing Lecture
30/03/10	Monolithic - University of Queensland Public Lecture Series
04/08/10	Adelaide University Public Lecture Series
22/03/11	AIA Tusculum New Media Forum
09/08/11	University of Newcastle Public Lecture Series
11/04/12	AIA Tusculum Emerging Architects Forum

Qualifications and affiliations

Bachelor of Science (Architecture), University of Sydney
Bachelor of Architecture, University of Sydney
Master of Urban and Regional Planning, University of Sydney
Mediation, Australian Commercial Dispute Centre
Fellow Planning Institute of Australia
Member Environmental Planning Law Association

Awards

Royal Australian Planning Institute President's Award (1999)
Australian Planning Ministers' National Award for Planning Excellence (2000) "Sydney - Planning for a Living City"

Referees

On request

Career summary

I was a Commissioner of the Land and Environment Court of NSW from 2002 to October 2016. During this period I conciliated and/or determined numerous appeals on a range of development matters with different levels of complexity and controversy.

Prior to my appointment as a Commissioner, I had been the Acting Director, Development Division, City of Sydney, having worked at the Council since 1994 in various roles. I managed the assessment of major development proposals and the preparation of planning policies, including the implementation and comprehensive review of the City Plan for which I was jointly awarded the Australian Planning Institute President's Award (1999) and the Australian Planning Ministers' National Award for Planning Excellence (2000). I have also worked in various branches of the Department of Planning and as a policy advisor to the NSW Minister for Planning and Environment. I began my career in architecture and then as a planner in private enterprise.

I am currently a member of the NSW Independent Planning Commission and Chair of the Coastal Council of NSW. I am the Chair of Woollahra and Randwick Local Planning Panels and an expert member on a number of planning panels.

I hold university degrees in both architecture and planning and qualifications in mediation. My experience in planning and environmental management is wide ranging, with particular expertise in statutory and strategic planning, urban design, heritage, planning law, research as well as management, decision making and dispute resolution.

Professional employment

2017 – Present	Member <ul style="list-style-type: none">- NSW Independent Planning Commission- Sydney North Planning Panel (Northern Beaches Alternate Member)- Northern Beaches, Waverley, Inner West and North Sydney Local Planning Panels- Chair Woollahra, Randwick Local Planning Panels and Alternate Chair Waverley Local Planning Panel (from March 2018)- Chair NSW Coastal Council (from May 2020, member from 2018)
October 2002 - October 2016	Commissioner Land and Environment Court of NSW
June 2001 - January 2002	Acting Director Development Division, City of Sydney
1994 - 2002	Deputy Director Development Division, City of Sydney Manager Planning Policy, City of Sydney Manager Development and Conservation, City of Sydney Area Manager Development and Conservation, City of Sydney
1988 - 1994	Specialist Architect/Senior Architect/Acting Deputy Manager Heritage Branch, Department of Planning
1986 - 1988	Specialist Urban Designer Urban Design Unit, Department of Environment and Planning
1985 - 1986	Assistant Policy Adviser Office of the Minister for Planning and Environment
1985	Executive/Technical Assistant to Director Department of Environment and Planning
1984 - 1985	Assistant Town Planner/Assistant Specialist Sydney Central Branch, Department of Environment and Planning
1984	Planning Assistant Wellings Smith and Byrnes
1983	Architect/Planner Davenport, Campbell & Partners
1983	Part Time Lecturer University of Technology
1982 - 1983	Architect/Planner (Student position) DCP McInnis Rigby
1980 - 1981	Architectural Assistant (Student position) RIAG Luzern Switzerland
1979 - 1980	Architectural Assistant (Student Position) Government Architects Branch DPWS

Dispute resolution and development decision making

Resolve appeals under the Land and Environment Court Act through hearings, conciliation conferences and other dispute resolution measures. Interpret Acts, statutory planning instruments and policies. Understand and evaluate evidence of experts and legal submissions. Facilitate amendments to applications to assist parties to reach agreement and, where this is not possible, adjudicate the dispute and clearly explain reasons for a decision in published judgments. Determine a wide range of matters with different levels of complexity and controversy in a timely and efficient manner. Ensure that the evidence of both parties, as well as objectors, is given appropriate weight and considered in a professional, legally correct, procedurally fair and respectful manner. Significant appeals include:

- Waldrup v Lake Macquarie City Council and Johnson Property Group Pty Ltd [2016] NSWLEC 1365 - third party appeal of designated development for water recycling facility
- Dellara Pty Ltd v Minister for Planning and Penrith City Council [2012] NSWLEC 1186 - appeal against the **Minister for Planning's refusal of a Major Project under Part 3A of the EPA Act for a waste and resource management facility that attracted over 10,000 submissions.**
- Urbis Pty Ltd v Inner West Council and Transport for NSW [2016] NSWLEC 1444 - development application for the redevelopment of the Balmain Leagues Club site
- Vision Land Glebe Pty Ltd v Council of the City of Sydney [2016] NSWLEC 1488 - staged development application for the concept redevelopment of the Bidura Childrens Court

Determine development applications under delegated authority of councils, Minister, Heritage Council and as a chair/expert member of planning panels, including state significant development as a Commissioner of the Independent Planning Commission. Recent applications include:

- Aloysius College, Kirribilli
- Orange Grove Solar Farm, Gunnedah
- Bayview Golf Course - infill seniors housing
- 351-353 New South Head Road, Double Bay - residential flat building
- 145 Hall St, Bondi Beach - boarding House

Policy and Research

As chair/expert member of planning panels provide advice to councils/Minister on planning proposals including:

- 55 Aird St, Parramatta
- Ralston Street, Belrose
- Amendment to Woollahra LEP - local character areas
- War Memorial Hospital, Waverley

Manage the strategic, urban design, heritage, economic and transport planning framework of City of Sydney through:

- City Plan comprising: Central Sydney Local Environment Plan 1996, Development Control Plan 1996 and Heritage Local Environmental Plan 2000.
- City Plan amendments including:
 - design excellence and competitive process
 - Heritage floor space system
 - Visitor and tourist accommodation and residential amenity
- Annual development monitoring report (1997-2001): Statistical information and analysis of development trends, including residential, commercial, visitor accommodation and heritage floor space
- Land use and employment survey (1997 and 2002): Census of commercial floor space, use and employment
- Post occupancy survey of Ultimo/Pymont and Central Sydney: Survey of residents in recent developments
- Review of Section 94 and Section 61 contributions plans

Skills and selected projects

Urban design

Prepare and manage urban design studies/masterplans/guidelines including:

- Model design competition brief
- Small sites study
- Special areas study
- Elizabeth McArthur Bay Masterplan
- Town Hall precinct study
- Regent Street Urban Design Study
- Wattle Street Urban Design Study
- Site-specific studies such as former George Patterson site, George Street
- Parramatta Road Urban Design Study
- Bondi Junction Urban Design study

Heritage

Policy Papers including:

- Heritage floor space system
- Discussion paper and technical paper on review of heritage system
- Review of permanent conservation orders and exemptions
- State heritage inventory project
- Economic benefits of heritage

Identification and assessment of significance for heritage Items including:

- Customs House, Sydney
- Grace Building, Sydney
- Albion Place, Sydney

Review of conservation management plans and assessment of applications for heritage items, including:

- Capitol Theatre, Sydney
- GPO, Sydney
- Aberglasslyn House, Maitland
- Kirkbride Block, Rozelle Hospital

Coastal Management

As Chair of Coastal Council, provide advice to the Minister administering the Coastal Management Act on a range of matters including:

- Annual surveys of councils on implementation of the Coastal Management Framework
- Review of the implementation of the Lake Cathie Coastal Zone Management Plan
- Review of Coastal Vulnerability Area mapping

Management

Management of multi-disciplinary teams of up to 70 people, budgets and developer contributions plans. Member of City of Sydney Council's Executive team (as Acting Director Development) during period of organisational change which involved review of Divisional structure and budget to determine appropriate staff resources, core business and level of service in response to proposed amalgamation of Council and implementation of voluntary redundancy programme. Part of Council's senior management team in lead up to the Sydney Olympics.