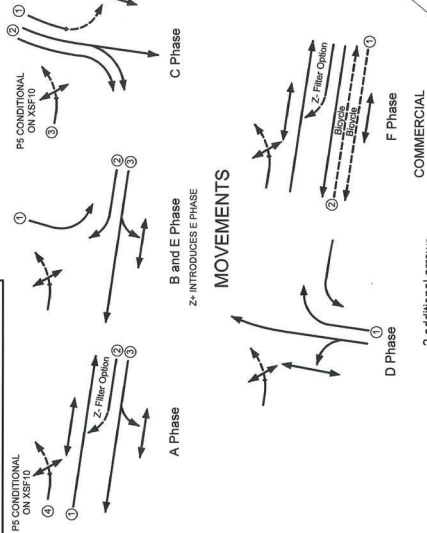


DRAWN BY CADD  
DO NOT AMEND MANUALLY



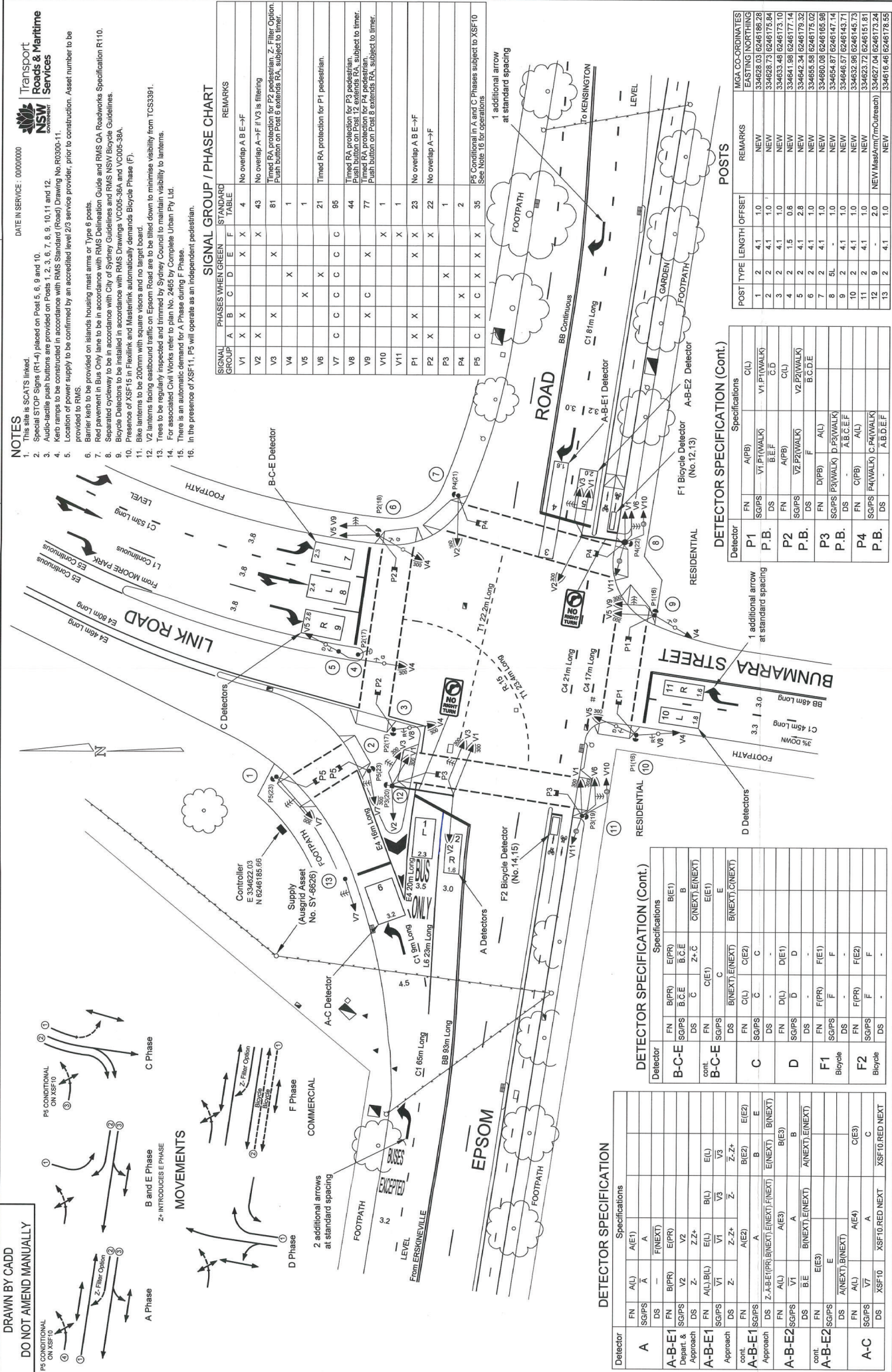
MOVEMENTS

NOTES

- This site is SCATS linked.
- Special STOP Signs (R1-4) placed on Post 5, 6, 9 and 10.
- Audio-tactile push buttons are provided on Posts 1, 2, 3, 6, 7, 8, 9, 10, 11 and 12.
- Kerb ramps to be constructed in accordance with RMS Standard (Road) Drawing No R0300-11.
- Location of power supply to be confirmed by an accredited level 2/3 service provider, prior to construction. Asset number to be provided to RMS.
- Barrier kerb to be provided on islands housing mast arms or Type 6 posts.
- Red pavement in Bus Only lane to be in accordance with RMS Definition Guide and RMS CA Roadworks Specification R110.
- Separated cycleway to be installed in accordance with City of Sydney Guidelines and RMS NSW Bicycle Guidelines.
- Bicycle Detectors to be installed in accordance with RMS Drawings VCO05-38A and VCO05-38A.
- Presence of XSF-15 in Flexlink and Masterlink automatically demands Bicycle Phase (F).
- Bike lanterns to be 200mm with square visors and no target board.
- V2 lanterns facing eastbound traffic on Epsom Road are to be tilted down to minimise visibility from TCS3391.
- Trees to be regularly inspected and trimmed by Sydney Council to maintain visibility to lanterns.
- For associated Civil Works refer to plan No. 2465 by Complete Urban Pty Ltd.
- There is an automatic demand for A Phase during F Phase.
- In the presence of XSF11, P5 will operate as an independent pedestrian.

SIGNAL GROUP / PHASE CHART

SIGNAL GROUP	PHASES WHEN GREEN						STANDARD TABLE	REMARKS
	A	B	C	D	E	F		
V1	X	X	X	X	X	X	4	No overlap A B E → F
V2	X	X	X	X	X	X	43	No overlap A → F if V3 is filtering
V3	X	X	X	X	X	X	81	Timed RA protection for P2 pedestrian. Z-Filter Option. Push button on Post 6 extends RA, subject to timer.
V4	X	X	X	X	X	X	1	
V5	X	X	X	X	X	X	1	
V6	X	X	X	X	X	X	21	Timed RA protection for P1 pedestrian.
V7	C	C	C	C	C	C	95	
V8	X	X	X	X	X	X	44	Timed RA protection for P3 pedestrian. Push button on Post 12 extends RA, subject to timer.
V9	X	X	X	X	X	X	77	Timed RA protection for P4 pedestrian. Push button on Post 8 extends RA, subject to timer.
V10	X	X	X	X	X	X	1	
V11	X	X	X	X	X	X	1	
P1	X	X	X	X	X	X	23	No overlap A B E → F
P2	X	X	X	X	X	X	22	No overlap A → F
P3	X	X	X	X	X	X	1	
P4	X	X	X	X	X	X	2	
P5	C	X	X	X	X	X	35	P5 Conditional in A and C Phases subject to XSF10. See Note 16 for operations.



DETECTOR SPECIFICATION

Detector	FN	AL	A(E1)	SG/PS	A	FINEXT	B(E1)	B	C	D(E1)	D	F1	F2	A-C
A	DS	FN	B(PR)	B(E1)	B	C	D	F1	F2	A	A(E4)	C(E3)	DS	XSF10
A-B-E1	DS	FN	B(PR)	B(E1)	B	C	D	F1	F2	A	A(E4)	C(E3)	DS	XSF10
Approach	DS	Z	Z-Z+	Z	Z-Z+	Z	Z-Z+	Z	Z-Z+	Z	Z-Z+	Z	Z	XSF10 RED NEXT
A-B-E1	DS	Z	Z-Z+	Z	Z-Z+	Z	Z-Z+	Z	Z-Z+	Z	Z-Z+	Z	Z	XSF10 RED NEXT
Approach	DS	Z	Z-Z+	Z	Z-Z+	Z	Z-Z+	Z	Z-Z+	Z	Z-Z+	Z	Z	XSF10 RED NEXT
A-B-E2	DS	FN	B(PR)	B(E1)	B	C	D	F1	F2	A	A(E4)	C(E3)	DS	XSF10
Approach	DS	FN	B(PR)	B(E1)	B	C	D	F1	F2	A	A(E4)	C(E3)	DS	XSF10
A-B-E2	DS	FN	B(PR)	B(E1)	B	C	D	F1	F2	A	A(E4)	C(E3)	DS	XSF10
Approach	DS	FN	B(PR)	B(E1)	B	C	D	F1	F2	A	A(E4)	C(E3)	DS	XSF10
A-C	DS	FN	B(PR)	B(E1)	B	C	D	F1	F2	A	A(E4)	C(E3)	DS	XSF10
Approach	DS	FN	B(PR)	B(E1)	B	C	D	F1	F2	A	A(E4)	C(E3)	DS	XSF10

DETECTOR SPECIFICATION (Cont.)

Detector	FN	B(PR)	B(E1)	B	C	D(E1)	D	F1	F2	A	A(E4)	C(E3)
B-C-E	DS	C	C	C	C	C	C	C	C	C	C	C
cont. B-C-E	DS	C	C	C	C	C	C	C	C	C	C	C
C	DS	C	C	C	C	C	C	C	C	C	C	C
D	DS	C	C	C	C	C	C	C	C	C	C	C
F1	DS	C	C	C	C	C	C	C	C	C	C	C
F2	DS	C	C	C	C	C	C	C	C	C	C	C

DETECTOR SPECIFICATION (Cont.)

Detector	FN	A(IP)	CIL	SG/PS	V1	P1(WALK)	V1	P1(WALK)	CIL
P1	DS	B(EF)	B(EF)	DS	DS	DS	DS	DS	DS
P2	DS	B(EF)	B(EF)	DS	DS	DS	DS	DS	DS
P3	DS	B(EF)	B(EF)	DS	DS	DS	DS	DS	DS
P4	DS	B(EF)	B(EF)	DS	DS	DS	DS	DS	DS
P5	DS	B(EF)	B(EF)	DS	DS	DS	DS	DS	DS

DESIGN LAYOUT

DESIGN NO: DS2014/004273

TCS No: 4337

ISSUE: A

SCALE: 1:1000

DATE: 10/04/2019

DESIGNER: Terry Lambance

CHECKED: Terry Lambance

DATE: 10/04/2019

PROJECT NO: 10/04/2019

PROJECT NAME: SYDNEY COUNCIL AREA TRAFFIC SIGNALS AT EPSOM ROAD, LINK ROAD AND BUNMARRA STREET, ROSEBERY

ROADS AND MARITIME SERVICES

PROPOSED:  EXISTING:

CAAD FILE: V4337-1A.dgn

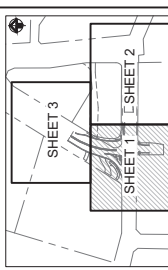
FILE: SF2014014602

REG No: DS2014/004273

ISSUE: A

SHEET: 1

FOR CONTINUATION REFER SKC005



Issue	Description	Date
P1	ISSUED FOR INFORMATION	08-06-21

THIS DRAWING CANNOT BE COPIED OR REPRODUCED IN ANY FORM OR USED FOR ANY OTHER PURPOSE OTHER THAN THAT ORIGINALLY INTENDED WITHOUT THE WRITTEN PERMISSION OF A TL.

**FOR APPROVAL FOR CONSTRUCTION**  
NOT TO BE USED FOR CONSTRUCTION

Scale: 1:200

Drawn	GB
Designed	GB
Checked	AHD
Approved	PW
Client	MGAS6 GDAA04

Client: **at&I**  
at&I Engineers and Project Managers  
Level 7, 153 Walker Street  
North Sydney NSW 2060  
Tel: 02 9438 1777  
Fax: 02 9523 1055  
www.atand.com.au  
info@atand.com.au

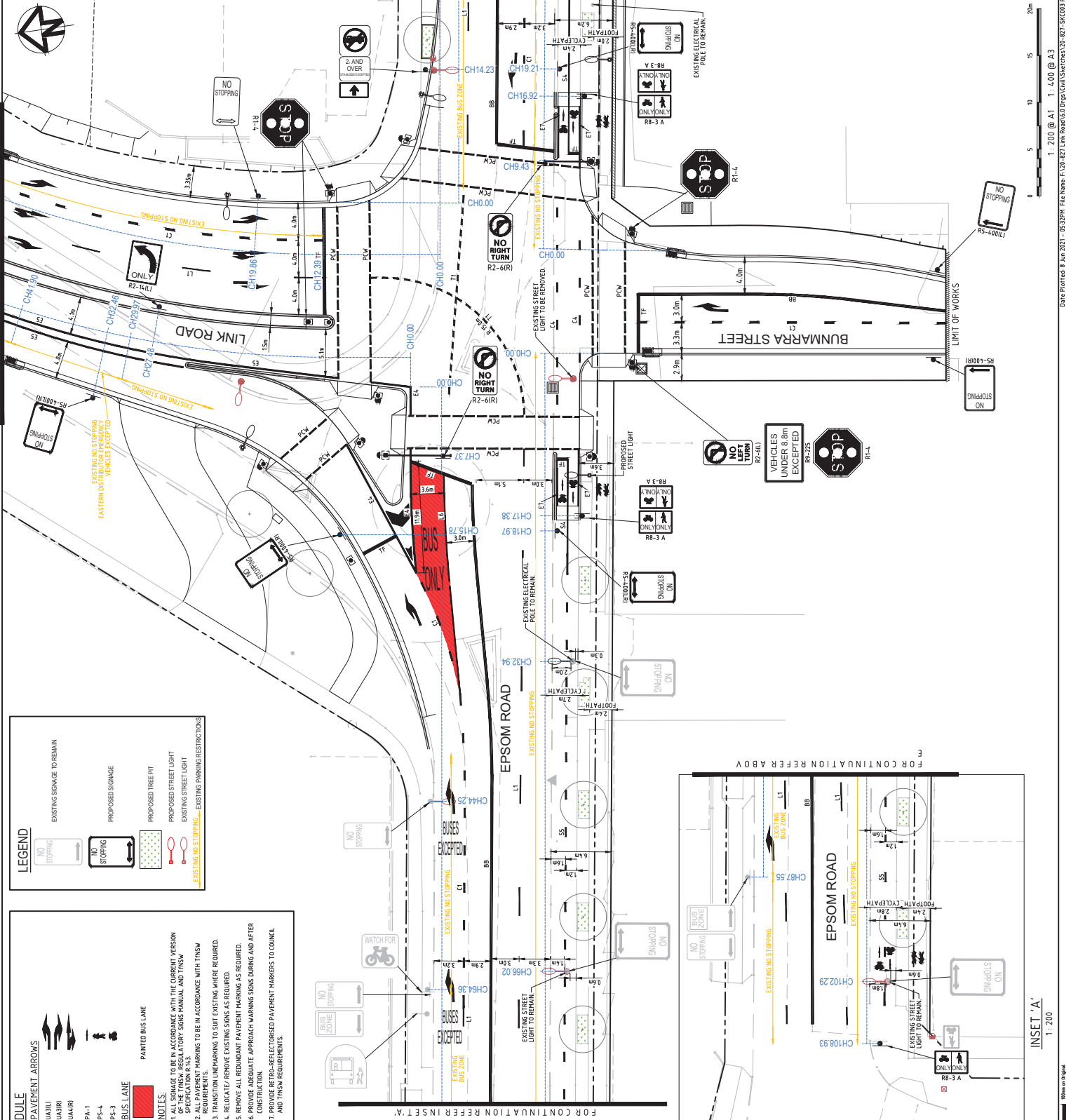
Project: **LINK ROAD & EPSOM ROAD ZETLAND PROPOSED INTERSECTION WORKS**

Title: **PUBLIC DOMAIN SIGNAGE AND LINEMARKING PLAN SHEET 1**

Project No.: Drawing No. **20-827-SKC003** Issue **P1**

FOR CONTINUATION REFER SKC004

FOR CONTINUATION REFER SKC005



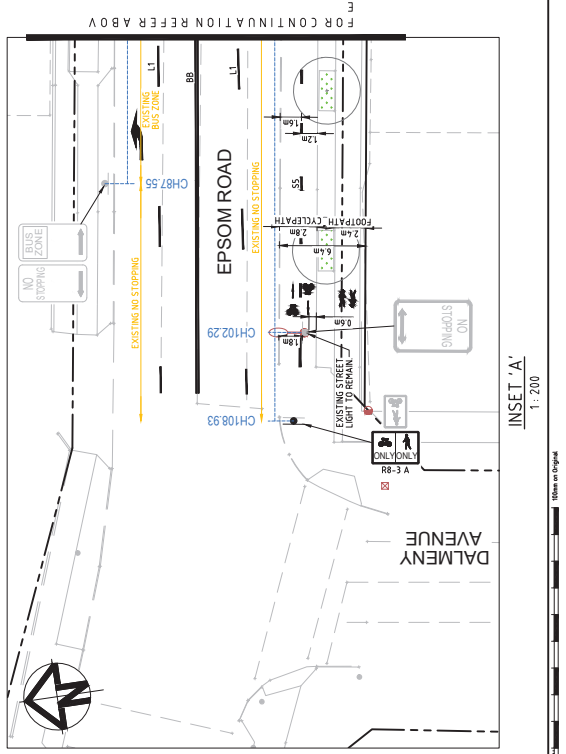
LEGEND	
	EXISTING SIGNAGE TO REMAIN
	PROPOSED SIGNAGE
	PROPOSED TREE PIT
	PROPOSED STREET LIGHT
	EXISTING STREET LIGHT
	EXISTING NO STOPPING
	EXISTING PARKING RESTRICTIONS

PAVEMENT MARKING SCHEDULE	
LONGITUDINAL LINES	
E1	PAVEMENT ARROWS
E2	UA3(U)
E3	UA3(R)
E4	UA4(R)
E5	PA-1
E6	PS-4
E7	PS-3
BARRIER LINES	
BB	BB
LANE LINES	
L1	L1
L2	L2
L3	L3
L4	L4
L5	L5
L6	L6
CONTINUITY LINES	
C1	C1
TURNING LINES	
T1	T1
TRANSVERSE LINES	
TF	TF
STOP LINES	
SL	SL
PEDESTRIAN CROSS WALK LINES	
PCW	PCW
BICYCLE LINES	
SA	SA

PAINTED BUS LANE

NOTES:

1. ALL SIGNAGE TO BE IN ACCORDANCE WITH THE CURRENT VERSION OF THE TNSW REGULATORY SIGNS MANUAL AND TNSW SPECIFICATION R413.
2. MARKING TO BE IN ACCORDANCE WITH TNSW REQUIREMENTS.
3. TRANSITION LINEMARKING TO SUIT EXISTING WHERE REQUIRED.
4. RELOCATE/REMOVE EXISTING SIGNS AS REQUIRED.
5. REMOVE ALL REDUNDANT PAVEMENT MARKING AS REQUIRED.
6. PROVIDE ADEQUATE APPROACH MARKING SIGNS DURING AND AFTER CONSTRUCTION.
7. PROVIDE RETRO-REFLECTORISED PAVEMENT MARKERS TO COUNCIL AND TNSW REQUIREMENTS.





### PAVEMENT MARKING SCHEDULE

LONGITUDINAL LINES	EDGE LINES	PAVEMENT ARROWS
E1	E1	UA3(L)
E4	E4	UA3(R)
E5	E5	UA4(R)
E7	E7	PA-1
BB	BB	PS-4
L1	L1	PS-3
L6	L6	BUS LANE
PAINTED BUS LANE		

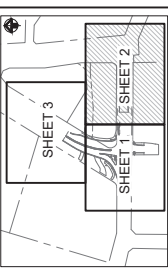
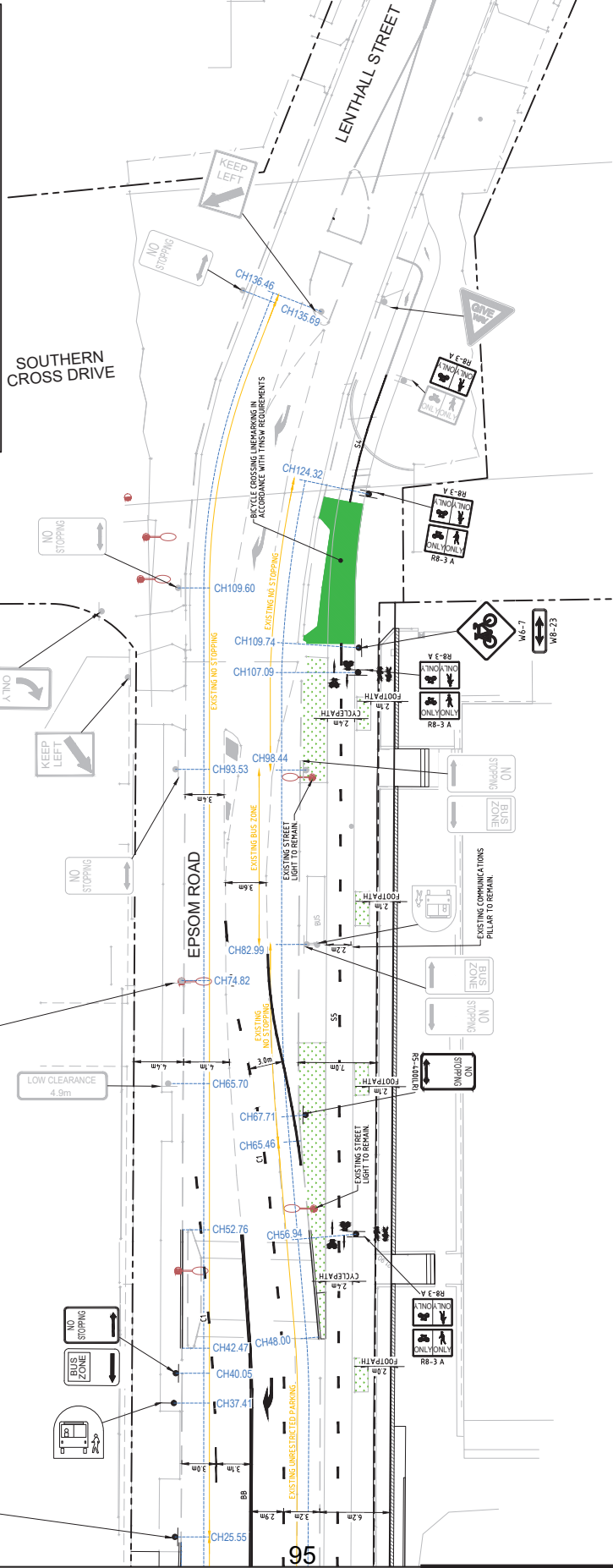
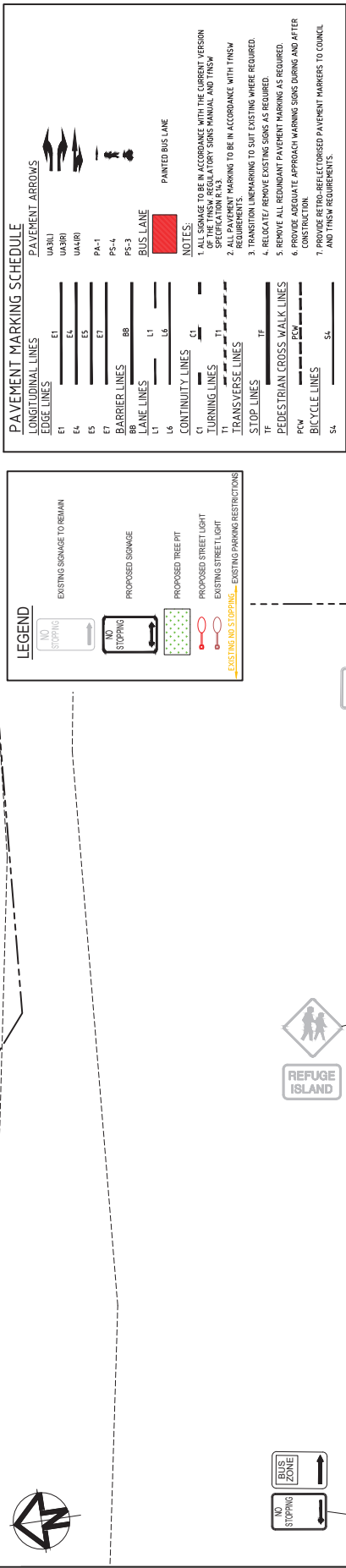
CONTINUITY LINES	TURNING LINES	TRANSVERSE LINES	STOP LINES	PEDESTRIAN CROSS WALK LINES	BICYCLE LINES
C1	T1	TF	TF	PCW	SL

NOTES
1. ALL SIGNAGE TO BE IN ACCORDANCE WITH THE CURRENT VERSION OF THE TNSW REGULATORY SIGNS MANUAL AND TNSW REQUIREMENTS.
2. ALL PAVEMENT MARKING TO BE IN ACCORDANCE WITH TNSW REQUIREMENTS.
3. TRANSITION LINEMARKING TO SUIT EXISTING WHERE REQUIRED.
4. RELOCATE/REMOVE EXISTING SIGNS AS REQUIRED.
5. REMOVE ALL REDUNDANT PAVEMENT MARKING AS REQUIRED.
6. PROVIDE ADEQUATE APPROACH WARNING SIGNS DURING AND AFTER CONSTRUCTION.
7. PROVIDE RETRO-REFLECTORISED PAVEMENT MARKERS TO COUNCIL AND TNSW REQUIREMENTS.

### LEGEND

	EXISTING SIGNAGE TO REMAIN
	PROPOSED SIGNAGE
	PROPOSED TREE PIT
	PROPOSED STREET LIGHT
	EXISTING STREET LIGHT
	EXISTING NO STOPPING
	EXISTING PARKING RESTRICTIONS



Issue	Description	Date
P1	ISSUED FOR INFORMATION	08-06-21

THIS DRAWING CANNOT BE COPIED OR REPRODUCED IN ANY FORM OR USED FOR ANY OTHER PURPOSE OTHER THAN THAT ORIGINALLY INTENDED WITHOUT THE WRITTEN PERMISSION OF A T&L

**FOR APPROVAL**  
NOT TO BE USED FOR CONSTRUCTION

Scale: 1:200

Drawn	GB
Designed	GB
Checked	PW
Approved	

Client: MGA56 GDA04

Project: LINK ROAD & EPSOM ROAD ZETLAND PROPOSED INTERSECTION WORKS

Title: PUBLIC DOMAIN SIGNAGE AND LINEMARKING PLAN SHEET 2

Project No. - Drawing No. 20-827-SKC004

Issue P1

**TOPPLACE**

Civil Engineers and Project Managers

**at&l**

Level 7, 153 Walker Street  
North Sydney NSW 2060  
Tel: 02 9439 1777  
Fax: 02 9523 1055  
www.atandl.com.au  
info@atandl.com.au

Project: LINK ROAD & EPSOM ROAD ZETLAND PROPOSED INTERSECTION WORKS

Title: PUBLIC DOMAIN SIGNAGE AND LINEMARKING PLAN SHEET 2

Project No. - Drawing No. 20-827-SKC004

Issue P1

FOR CONTINUATION REFER SKC003

Date Plotted: 9 Jun 2021 - 06:58PM File Name: P:\02-827-05-BPRT-106-006-A3-Draft\01\Sketches\13-827-SKC004\_PUBLIC\_DOMAIN\_SIGNAGE\_AND\_LINEMARKING\_PLAN\_SHEET\_2.dwg

Home in Origin

**PAVEMENT MARKING SCHEDULE**

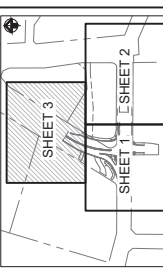
LONGITUDINAL LINES		PAVEMENT ARROWS	
E1	—	U&R1	
E2	—	U&R2	
E3	—	U&R3	
E4	—	U&R4	
E5	—	PA-1	
E6	—	PA-2	
E7	—	PA-3	
E8	—	PA-4	
E9	—	PA-5	
E10	—	PA-6	
E11	—	PA-7	
E12	—	PA-8	
E13	—	PA-9	
E14	—	PA-10	
E15	—	PA-11	
E16	—	PA-12	
E17	—	PA-13	
E18	—	PA-14	
E19	—	PA-15	
E20	—	PA-16	
E21	—	PA-17	
E22	—	PA-18	
E23	—	PA-19	
E24	—	PA-20	
E25	—	PA-21	
E26	—	PA-22	
E27	—	PA-23	
E28	—	PA-24	
E29	—	PA-25	
E30	—	PA-26	
E31	—	PA-27	
E32	—	PA-28	
E33	—	PA-29	
E34	—	PA-30	
E35	—	PA-31	
E36	—	PA-32	
E37	—	PA-33	
E38	—	PA-34	
E39	—	PA-35	
E40	—	PA-36	
E41	—	PA-37	
E42	—	PA-38	
E43	—	PA-39	
E44	—	PA-40	
E45	—	PA-41	
E46	—	PA-42	
E47	—	PA-43	
E48	—	PA-44	
E49	—	PA-45	
E50	—	PA-46	
E51	—	PA-47	
E52	—	PA-48	
E53	—	PA-49	
E54	—	PA-50	
E55	—	PA-51	
E56	—	PA-52	
E57	—	PA-53	
E58	—	PA-54	
E59	—	PA-55	
E60	—	PA-56	
E61	—	PA-57	
E62	—	PA-58	
E63	—	PA-59	
E64	—	PA-60	
E65	—	PA-61	
E66	—	PA-62	
E67	—	PA-63	
E68	—	PA-64	
E69	—	PA-65	
E70	—	PA-66	
E71	—	PA-67	
E72	—	PA-68	
E73	—	PA-69	
E74	—	PA-70	
E75	—	PA-71	
E76	—	PA-72	
E77	—	PA-73	
E78	—	PA-74	
E79	—	PA-75	
E80	—	PA-76	
E81	—	PA-77	
E82	—	PA-78	
E83	—	PA-79	
E84	—	PA-80	
E85	—	PA-81	
E86	—	PA-82	
E87	—	PA-83	
E88	—	PA-84	
E89	—	PA-85	
E90	—	PA-86	
E91	—	PA-87	
E92	—	PA-88	
E93	—	PA-89	
E94	—	PA-90	
E95	—	PA-91	
E96	—	PA-92	
E97	—	PA-93	
E98	—	PA-94	
E99	—	PA-95	
E100	—	PA-96	
E101	—	PA-97	
E102	—	PA-98	
E103	—	PA-99	
E104	—	PA-100	
E105	—	PA-101	
E106	—	PA-102	
E107	—	PA-103	
E108	—	PA-104	
E109	—	PA-105	
E110	—	PA-106	
E111	—	PA-107	
E112	—	PA-108	
E113	—	PA-109	
E114	—	PA-110	
E115	—	PA-111	
E116	—	PA-112	
E117	—	PA-113	
E118	—	PA-114	
E119	—	PA-115	
E120	—	PA-116	
E121	—	PA-117	
E122	—	PA-118	
E123	—	PA-119	
E124	—	PA-120	
E125	—	PA-121	
E126	—	PA-122	
E127	—	PA-123	
E128	—	PA-124	
E129	—	PA-125	
E130	—	PA-126	
E131	—	PA-127	
E132	—	PA-128	
E133	—	PA-129	
E134	—	PA-130	
E135	—	PA-131	
E136	—	PA-132	
E137	—	PA-133	
E138	—	PA-134	
E139	—	PA-135	
E140	—	PA-136	
E141	—	PA-137	
E142	—	PA-138	
E143	—	PA-139	
E144	—	PA-140	
E145	—	PA-141	
E146	—	PA-142	
E147	—	PA-143	
E148	—	PA-144	
E149	—	PA-145	
E150	—	PA-146	
E151	—	PA-147	
E152	—	PA-148	
E153	—	PA-149	
E154	—	PA-150	

**NOTES:**

1. ALL SIGNAGE TO BE IN ACCORDANCE WITH THE CURRENT VERSION OF THE TNSW REGULATORY SIGNS MANUAL AND TNSW SPECIFICATION R 163.
2. ALL MARKING TO BE IN ACCORDANCE WITH TNSW REQUIREMENTS.
3. TRANSITION LINE MARKING TO SUIT EXISTING WHERE REQUIRED.
4. RELOCATE/REMOVE EXISTING SIGNS AS REQUIRED.
5. REMOVE ALL REDUNDANT PAVEMENT MARKING AS REQUIRED.
6. PROVIDE ADEQUATE APPROACH WARNING SIGNS DURING AND AFTER CONSTRUCTION.
7. PROVIDE RETRO-REFLECTORISED PAVEMENT MARKERS TO COUNCIL AND TNSW REQUIREMENTS.

**LEGEND**

	EXISTING SIGNAGE TO REMAIN
	PROPOSED SIGNAGE
	PROPOSED TREE PIT
	PROPOSED STREET LIGHT
	EXISTING STREET LIGHT
	EXISTING NO STOPPING - EXISTING PARKING RESTRICTIONS



THIS DRAWING CANNOT BE COPIED OR REPRODUCED IN ANY FORM OR USED FOR ANY OTHER PURPOSE OTHER THAN THAT ORIGINALLY INTENDED WITHOUT THE WRITTEN PERMISSION OF A T&L

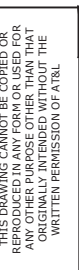
Issue	Description	Date
P1	ISSUED FOR INFORMATION	08-06-21

**FOR APPROVAL**  
NOT TO BE USED FOR CONSTRUCTION

Scale: 1:200

Drawn: GB  
Designed: GB  
Checked: GB  
Reviewed: PW  
Grid: MGA56 GD404  
Approved:

Client:

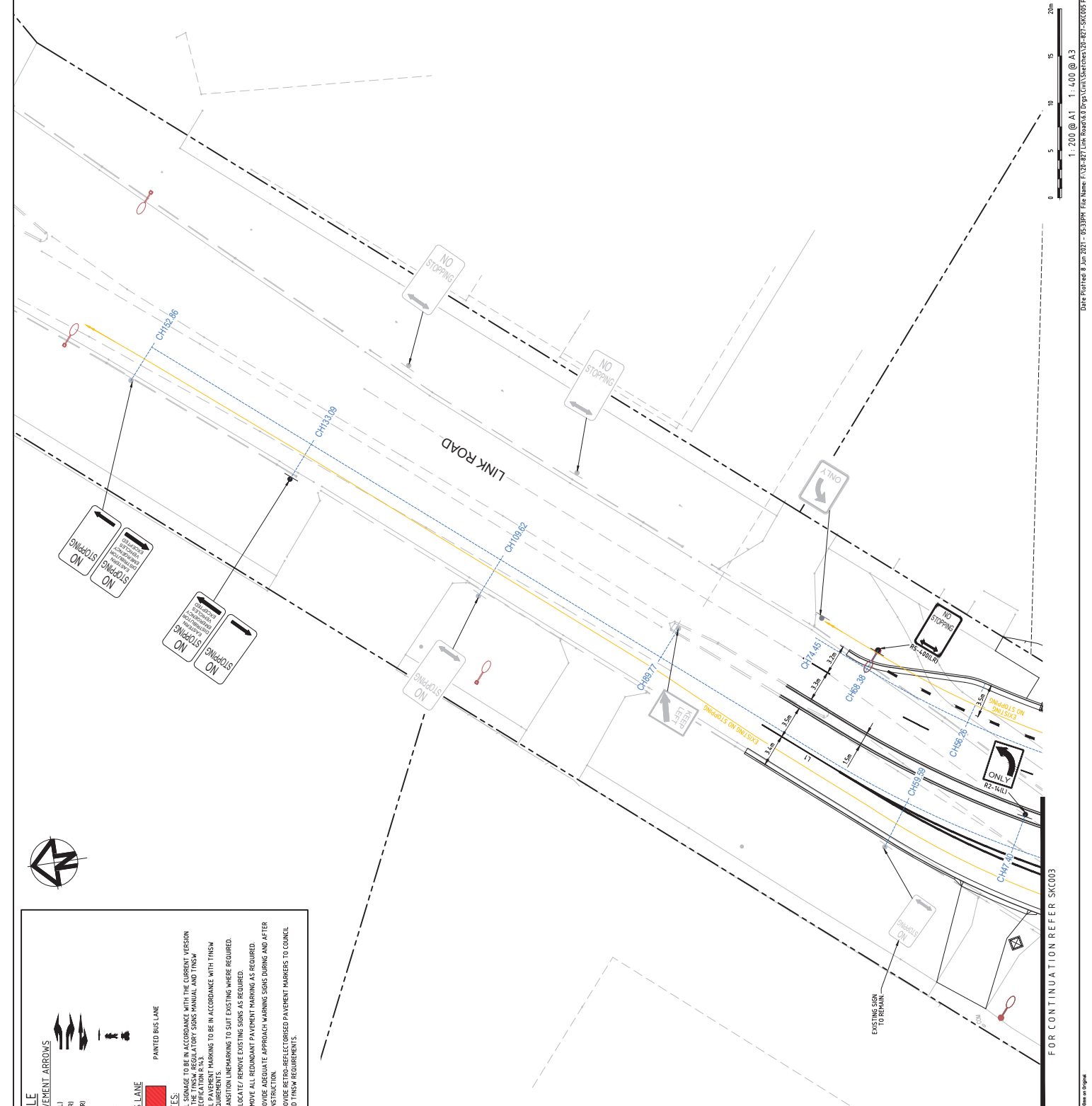


**at&l**  
Civil Engineers and Project Managers  
Level 7, 153 Walker Street  
North Sydney NSW 2060  
Tel: 02 9438 1177  
Fax: 02 9523 1055  
www.atandl.com.au  
info@atandl.com.au

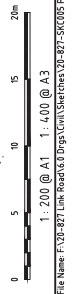
Project: LINK ROAD & EPSOM ROAD ZETLAND PROPOSED INTERSECTION WORKS

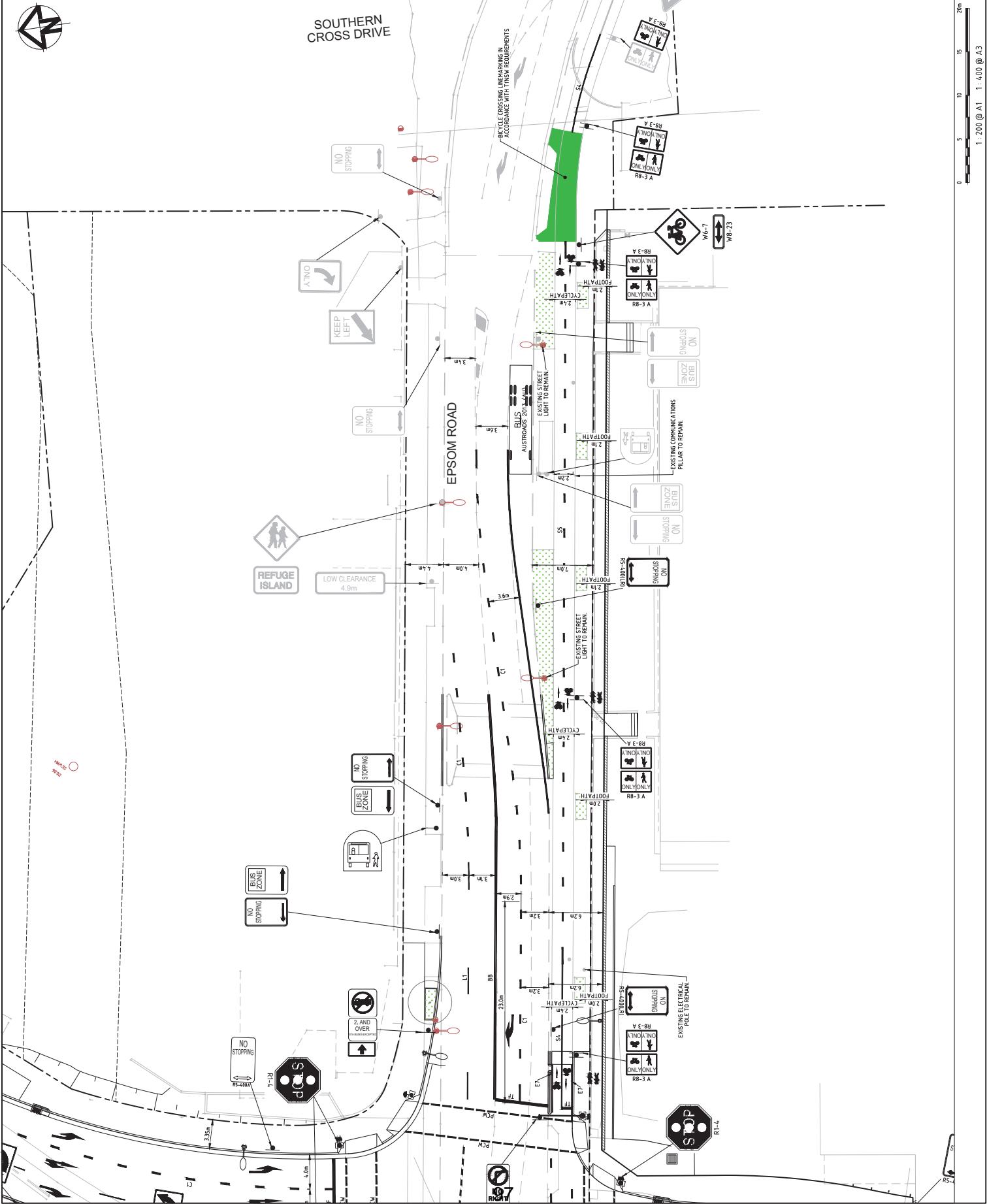
Title: PUBLIC DOMAIN SIGNAGE AND LINEMARKING PLAN SHEET 3

Project No.: Drawing No. 20-827-SKC005 Issue P1



FOR CONTINUATION REFER SKC005





SOUTHERN CROSS DRIVE

EPSOM ROAD

BICYCLE CROSSING UNMARKING IN ACCORDANCE WITH TMS&P REQUIREMENTS

<p>THIS DRAWING CANNOT BE COPIED OR REPRODUCED IN ANY FORM OR USED FOR ANY OTHER PURPOSE OTHER THAN THAT ORIGINALLY INTENDED WITHOUT THE WRITTEN PERMISSION OF A T&amp;I</p>	
<p>Issue / Description</p>	<p>Date</p>
<p>P1 ISSUED FOR INFORMATION</p>	<p>08-06-21</p>
<p>Scale: 1:200</p>	
<p>Drawn: GB</p>	<p>Designed: GB</p>
<p>Checked: AHD</p>	<p>Approved: PW</p>
<p>Client: MGA56 GD&amp;A4</p>	
<p>Project: <b>FOR APPROVAL</b> NOT TO BE USED FOR CONSTRUCTION</p>	
<p>Project: LINK ROAD &amp; EPSOM ROAD ZETLAND PROPOSED INTERSECTION WORKS</p>	
<p>Plan: EPSOM ROAD SIGNAGE AND LINEMARKING PLAN OPTION 2</p>	
<p>Project No.: Drawing No. 20-827-SKC004</p>	<p>Issue P1</p>



Civil Engineers and Project Managers  
 Level 7, 153 Walker Street  
 North Sydney NSW 2060  
 Tel: 02 9438 1177  
 Fax: 02 9523 1055  
 www.atandiplacement.com.au  
 info@atandiplacement.com.au

