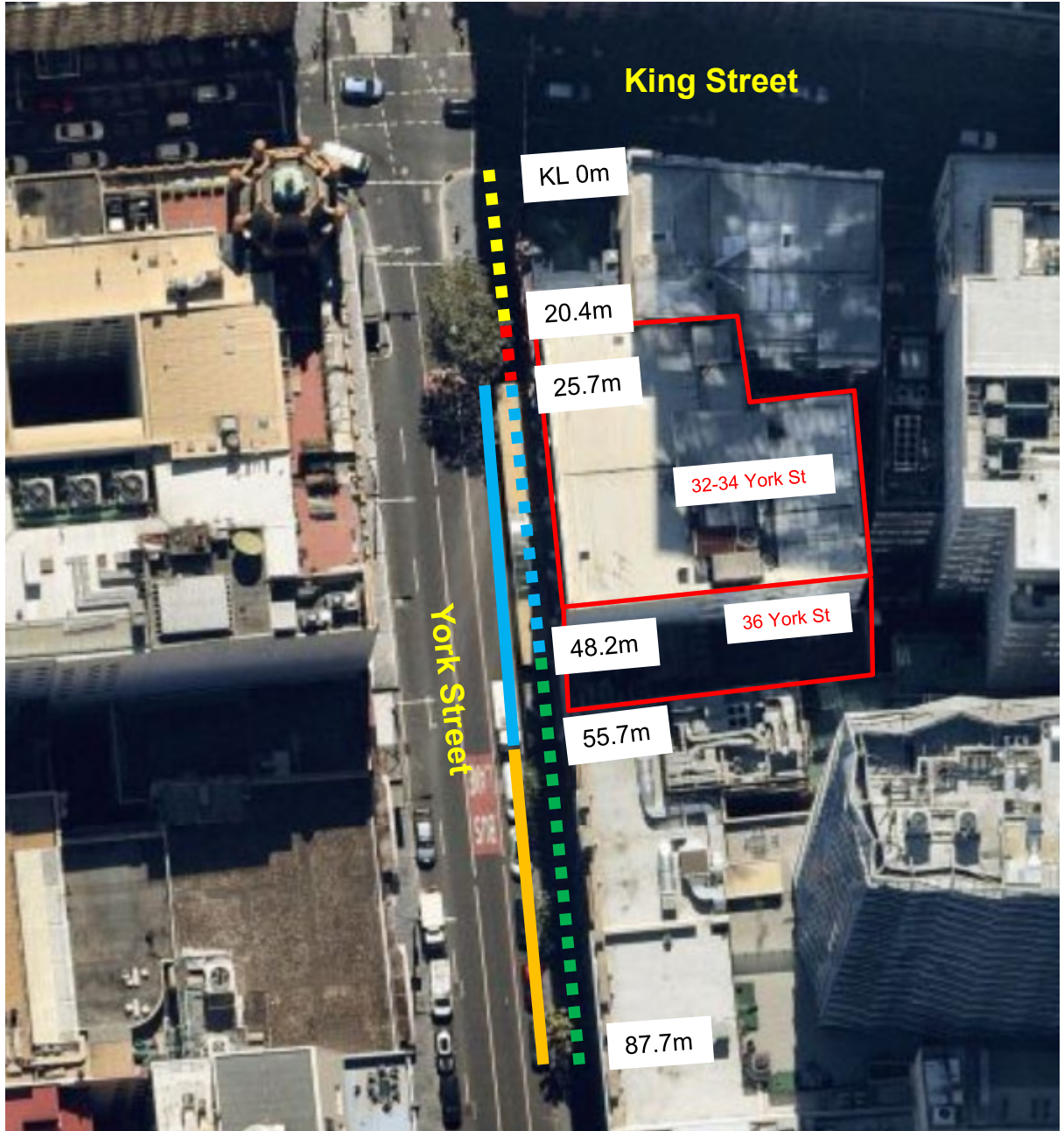







York Street, Sydney Proposed Works Zone




Existing

-  "No Stopping"
-  "No Parking"
-  "No Parking Coaches Excepted 15 Minute Limit"
-  "No Stopping 6-10am 3-8pm Mon-Fri", "Loading Zone Ticket 10am-3pm Mon-Fri 6-10am Sat" and "4P Ticket 8pm-12am Mon-Fri 10am-10pm Sat 8am-10pm Sun & Public Holidays" 47

Proposed

-  "Works Zone 7am-7pm Mon-Fri 7am-5pm Sat" and "No Parking Coaches Excepted 15 Minute Limit All Other Times"

Proposed changes when coach parking cannot be accommodated in the Works Zone

-  "No Parking Coaches Excepted 15 Minute Limit"