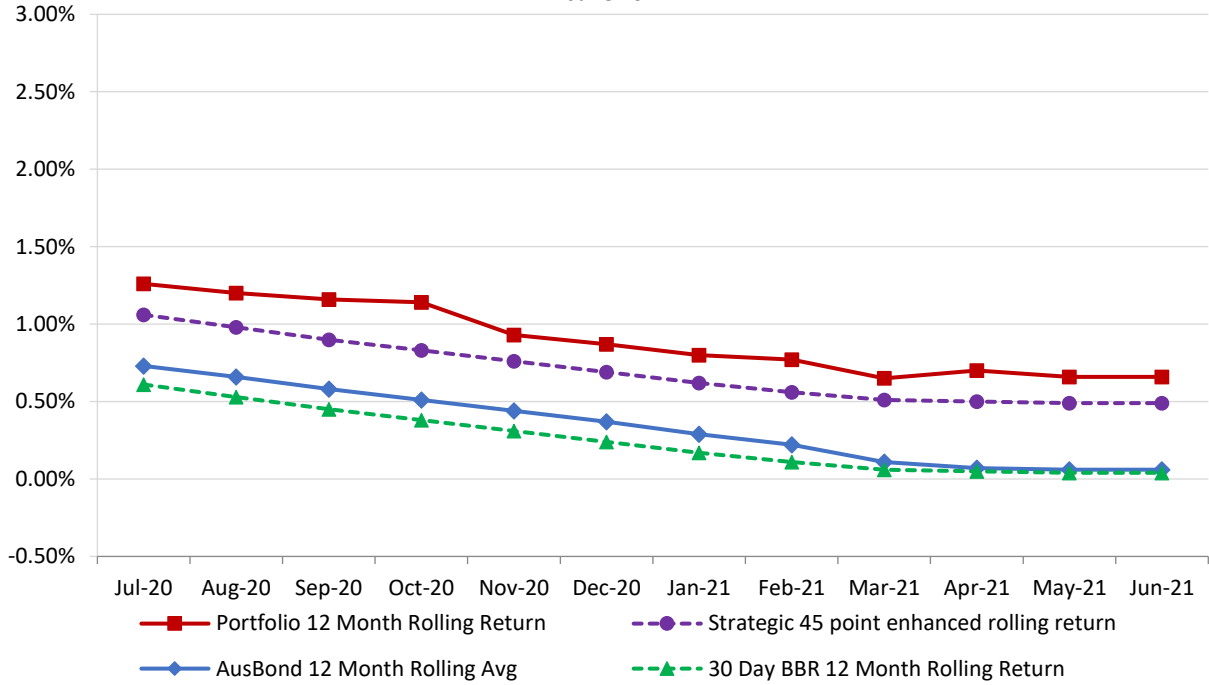


Attachment B

**Investment Performance
as at 30 June 2021**

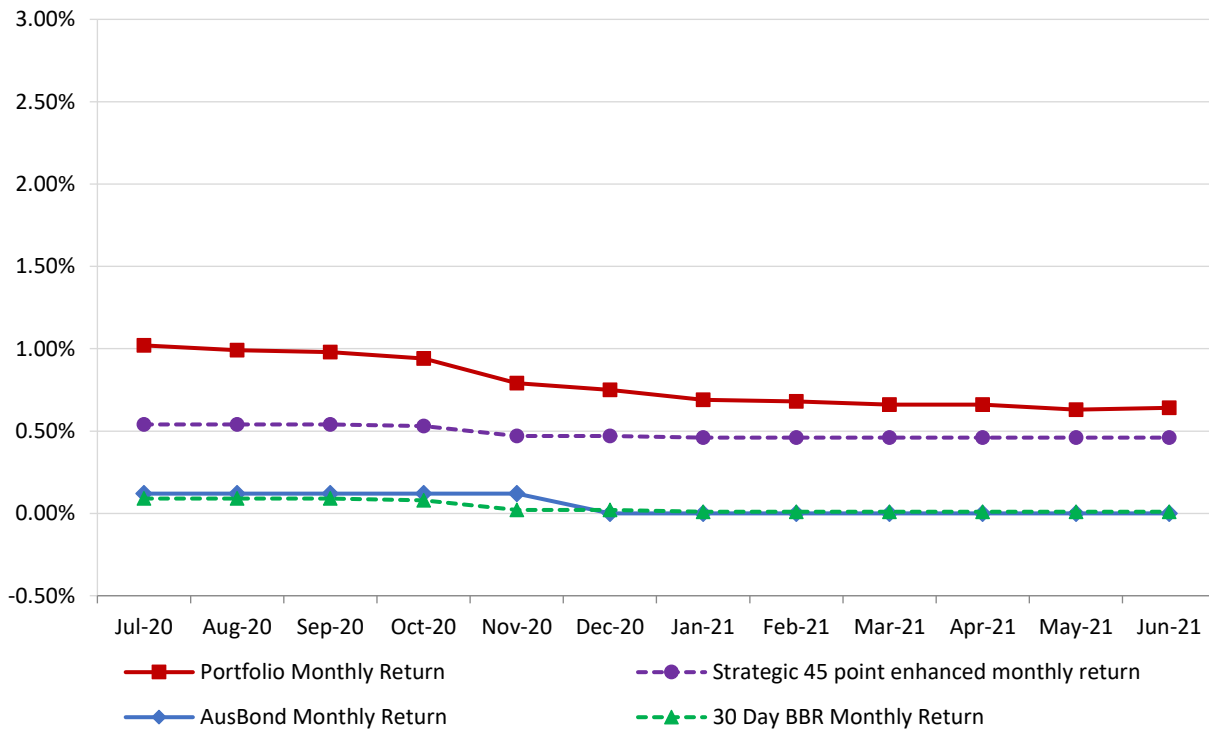
12 Month Rolling Averages

Actual Portfolio vs Strategic Enhanced Benchmark vs AusBond Benchmark vs 30 Day BBR Benchmark
June 2021

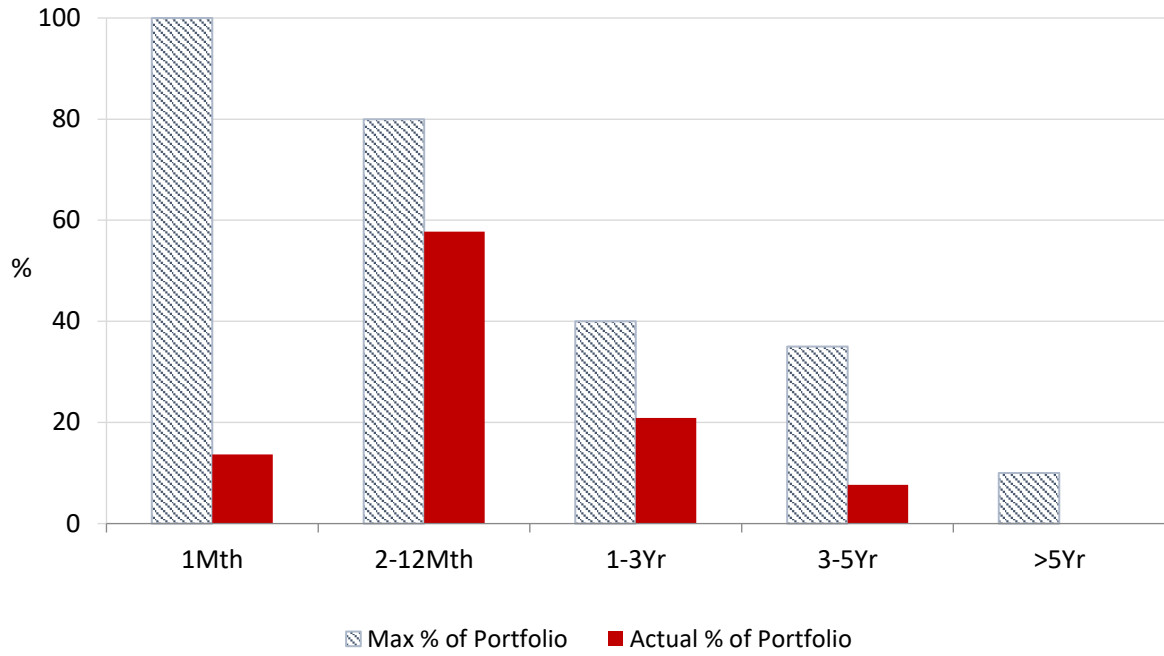


Monthly Results

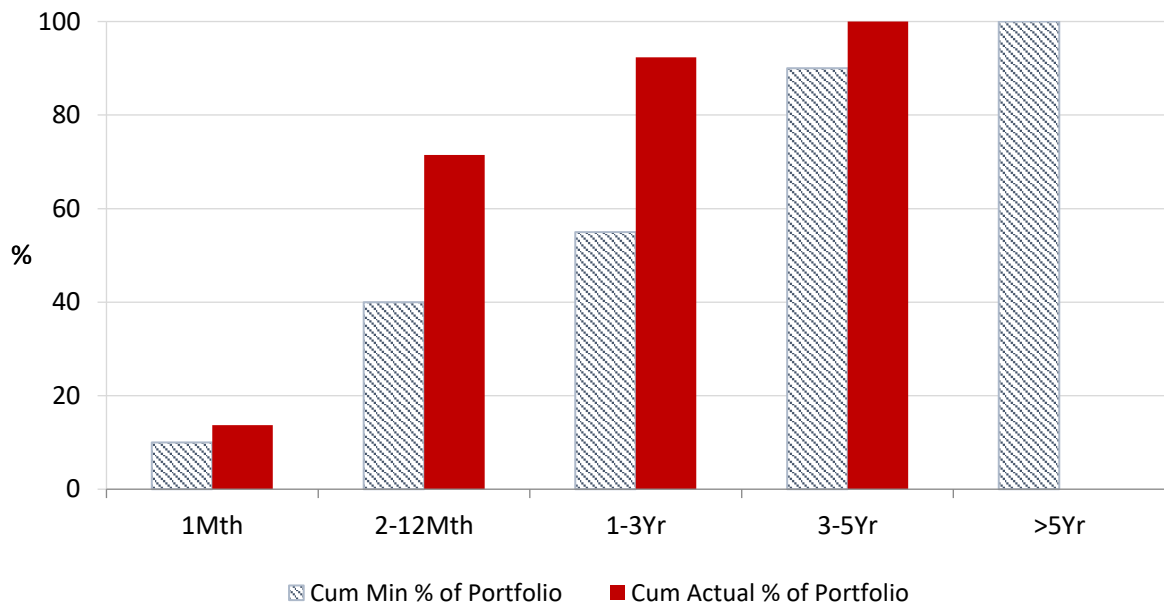
Actual Portfolio vs Strategic Enhanced Benchmark vs AusBond Benchmark vs 30 Day BBR Benchmark
June 2021



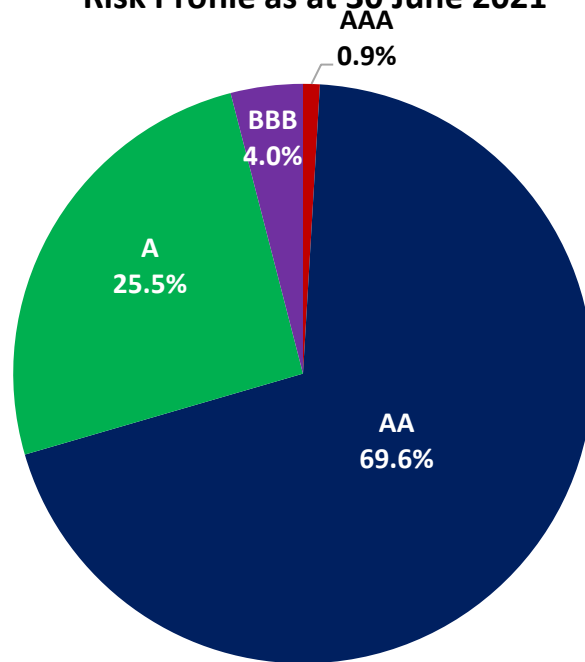
Portfolio Liquidity - Maximum Allowances as at 30 June 2021



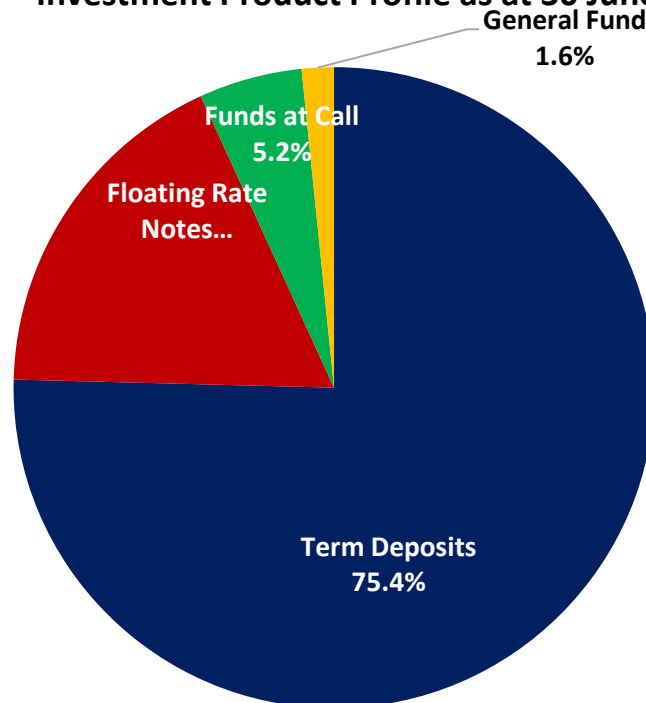
Portfolio Liquidity - Minimum Allocations as at 30 June 2021



Risk Profile as at 30 June 2021



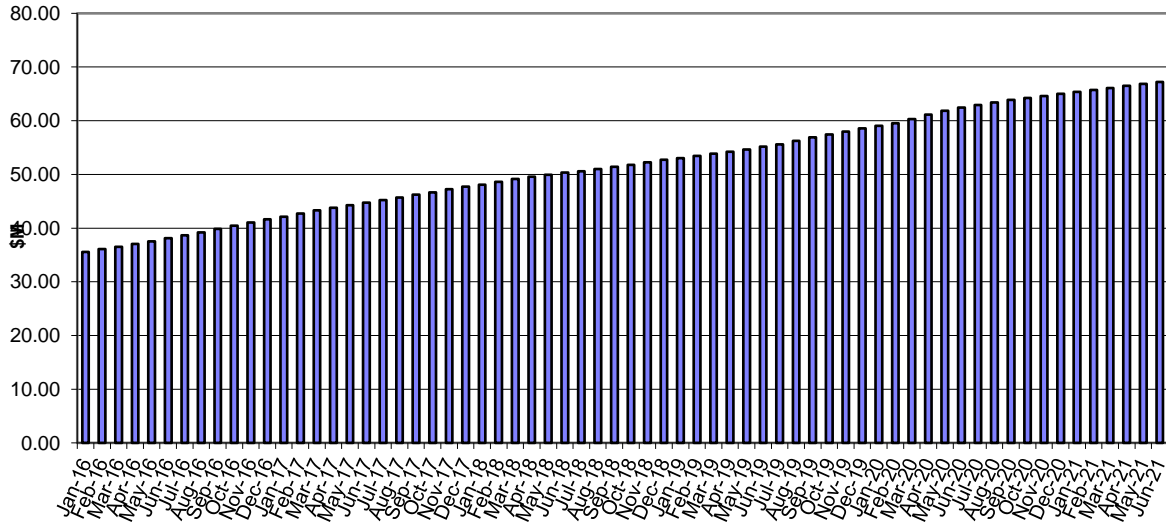
Investment Product Profile as at 30 June 2021



INVESTMENT AND CASH DISTRIBUTION BY FINANCIAL INSTITUTION
as at 30 June 2021

Institution Category	Financial Institution	Amount \$M	Financial Inst. %	Institution Cat. %
Australian Big 4 Bank (and related institutions)	ANZ Bank	18.0	2.8	
	Commonwealth Bank	214.3	32.8	
	National Aust Bank	70.7	10.8	
	Westpac Banking Corporation	146.4	22.4	
Big 4 Total		449.4		68.7
Other Australian ADIs and Australian subsidiaries of foreign institutions	Bank Australia Limited	5.0	0.8	
	Bank of China	4.5	0.7	
	Bank of Queensland	39.0	6.0	
	Bendigo & Adelaide Bank	30.0	4.6	
	Great Southern Bank (formerly Credit Union Australia)	4.3	0.7	
	ME Bank	43.0	6.6	
	Suncorp Bank	14.6	2.2	
	Macquarie Bank Ltd	49.0	7.5	
	Northern Territory Treasury Corporation	10.0	1.5	
Newcastle Permanent Building Society	5.0	0.8		
Other ADI Total		204.4		31.3
Grand Total		653.8	100.0	100.0

Cumulative Outperformance over AusBond Benchmark - 2015-2021



Cumulative Outperformance over 30 Day BBR Benchmark - 2015-2021

