

Attachment D

Engagement Report

Engagement report – draft Environmental Strategy 2021- 2025 and draft Environmental Sustainability Policy



Contents

Background	3
Engagement summary	4
Survey respondents	5
Key findings	6
Four directions	8
Subjects/issues raised in submissions	17
Activities	32
Appendix	33

Background

Draft Environmental Strategy 2021 - 2025

Our new draft strategy recognises and responds to the global climate emergency, builds on what we have already achieved and sets ambitious new targets.

What we're doing

It is important for cities to lead the way on climate action. This draft strategy outlines how Sydney will continue to be a global leader and create a more resilient and sustainable city.

It details how we will increase energy and water efficiency, use more renewable energy, move away from petrol-fuelled vehicles and divert waste away from landfill.

In 2019, we spoke to Aboriginal and Torres Strait Islander people, children and young people, residents, businesses, workers and visitors about their vision for the future.

People overwhelmingly want a response to climate change. They want a city with sustainable waste management and use of resources. People want to see a reduction in emissions, greater recycling and reusing of products and changes to how we use our city to reduce our impact on the environment.

We've taken insights from communities, government, and industry to develop this strategy.

It sets out 4 key directions and 23 supporting actions that we will take to achieve meaningful environmental outcomes in our city.

The draft document was on public exhibition between 19 May 2021 to 16 June 2021.

Draft Environmental Sustainability Policy

A policy statement that supports the implementation of the Strategy was also placed on public exhibition. The Policy will enable the City to strengthen the environmental management expectations of City partners including suppliers, grant and event organisers holding events in City spaces. City partners will be required to comply with specific requirements of the policy and supporting guidelines including Single-Use Guidelines and Sustainable Design Technical Guidelines.

This engagement report

This document summarises key findings and outlines activities that took place during the public exhibition of the draft environmental strategy.

All feedback captured in this report will be considered before reporting back to Council.

Engagement summary

From 19 May 2021 to 16 June 2021, we asked the community for feedback on our draft environmental strategy.

Consultation on the plan provided an opportunity for stakeholders and the community to review and comment on the draft strategy before being taken to Council for adoption.

Consultation activities included online engagement and a stakeholder briefing. The consultation was promoted on various social media channels.

This report outlines the community engagement activities that took place to support the consultation and summarises the key findings from the consultation.

Purpose of the engagement

The purpose of the engagement was to:

- gather feedback from stakeholders and the community about the draft strategy
 - determine the level of satisfaction with the draft strategy
 - inform the development of the final strategy.
-

Outcomes from the engagement

Over 100 pieces of feedback were received during the consultation. Below is a break-down of the feedback received:

- 111 surveys completed
- 10 email submissions were received
- Over 140 stakeholders attended an online briefing

Submissions received from organisations

- C40
- NSW Department of Planning, Industry and Environment Net Zero Transport Team
- Owners Corporation Network
- Pyrmont Action

Survey respondents



111 PEOPLE SURVEYED



31% AGE 20 - 40

39% AGE 41 - 60

28% AGE 61+



**61% LIVE IN THE CITY OF
SYDNEY AREA**



**46% WORK IN THE CITY
OF SYDNEY AREA**



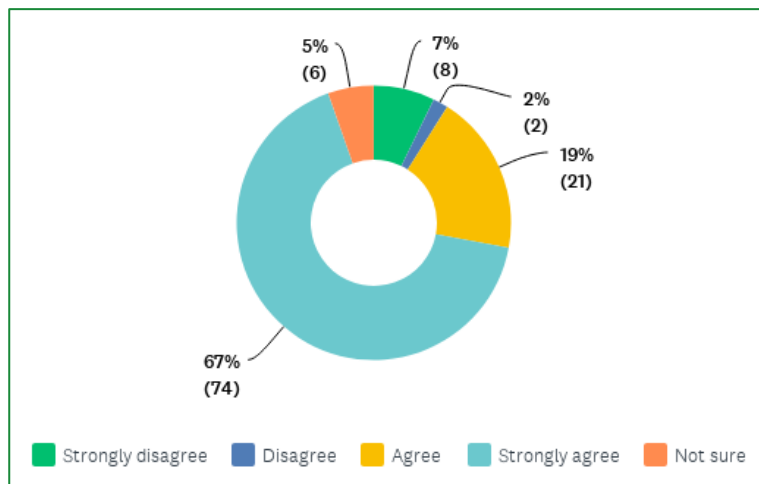
40% MALE

56% FEMALE

Key findings

Survey results indicate overall support for the draft strategy's vision and confidence in the City's ability to meet the targets and vision. It also clearly shows concern over impacts of climate change in the city, with 87% of respondents either very worried or worried about the impacts of climate change.

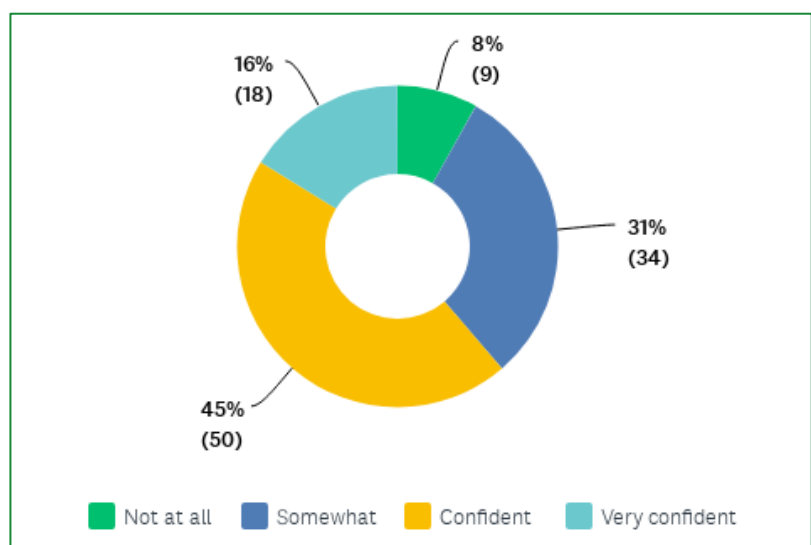
Q: How strongly do you agree or disagree with this strategy's vision for a more resilient and sustainable city?



86%
strongly
agree or
agree

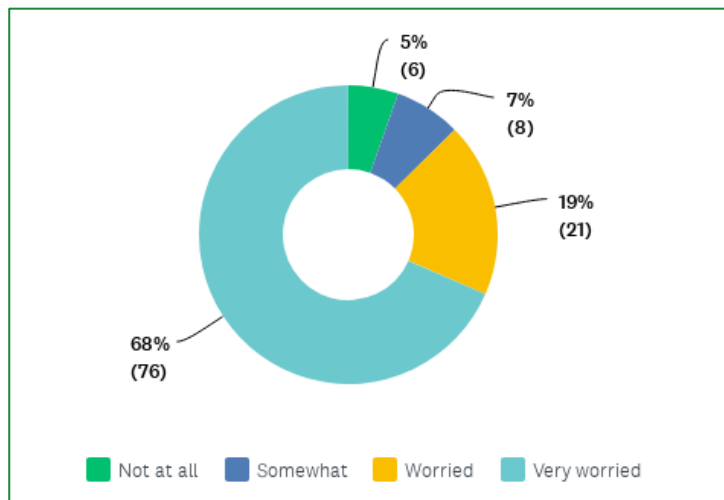
Q: How confident do you feel that the City of Sydney and the community can meet the targets set out in this strategy?

61%
confident
or very
confident



When asked why respondents made their selection, people who selected 'very confident' or 'confident' cited the City's strong leadership and track record, and a motivated community as key reasons. Others who were confident cited easily achievable targets as the reason for their confidence.

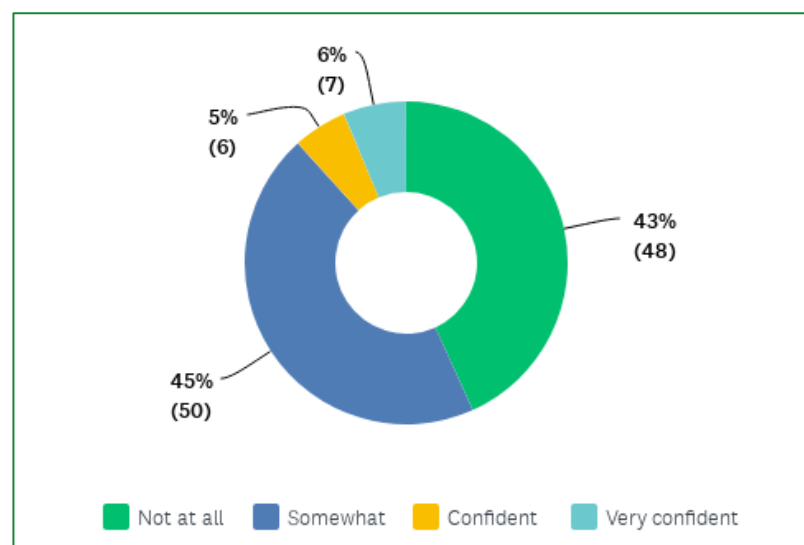
Q: How worried are you about the impacts of climate change including heatwaves, bushfires and storms?



87%
very
worried
or worried

Q: How confident are you that action by government, business and the community is adequate to address these challenges?

88%
not at all or
somewhat
confident



Respondents who selected 'somewhat' or 'not at all' cited a lack of support from state and federal governments on climate action, that some of the targets impact on the liveability and vibrancy of Sydney, and bureaucratic council operations and resourcing as key reasons.

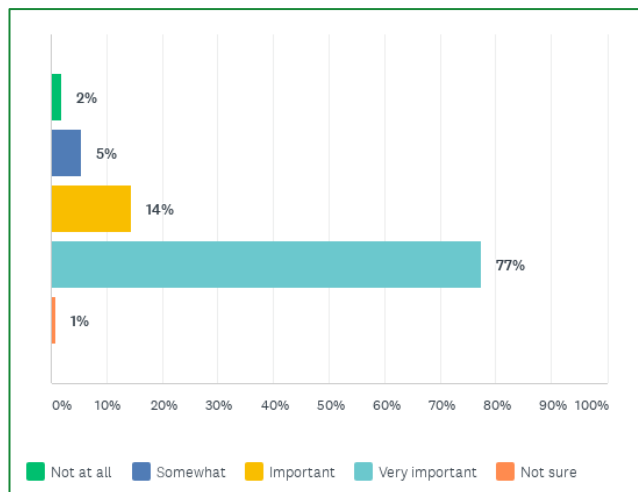
Four directions

Survey respondents were asked how important the draft strategy's four directions are. Most respondents think all four directions are either important or very important. Direction 2 was identified as 'very important' by the most respondents (79%).

Direction 1 – Smart and resilient City operations

91%

very important
or important

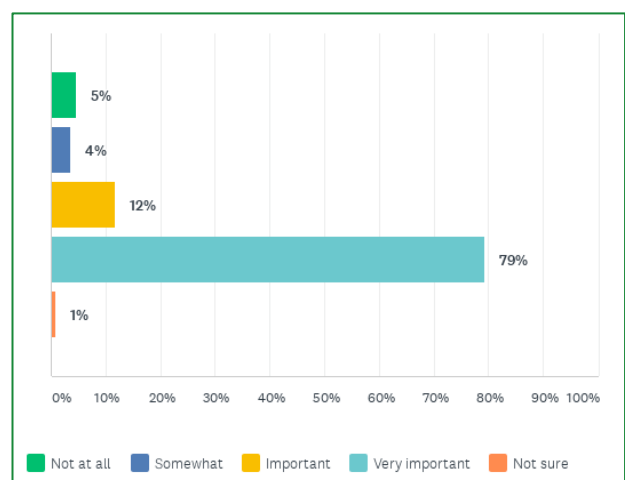


The key themes that respondents commented on most for this direction include support for circular economy and waste reduction measures, a desire for the City to continue to show strong leadership and engagement with businesses and the community, and energy and water management.

Direction 2 – Efficient, future proofed buildings and transport powered by renewable energy

91%

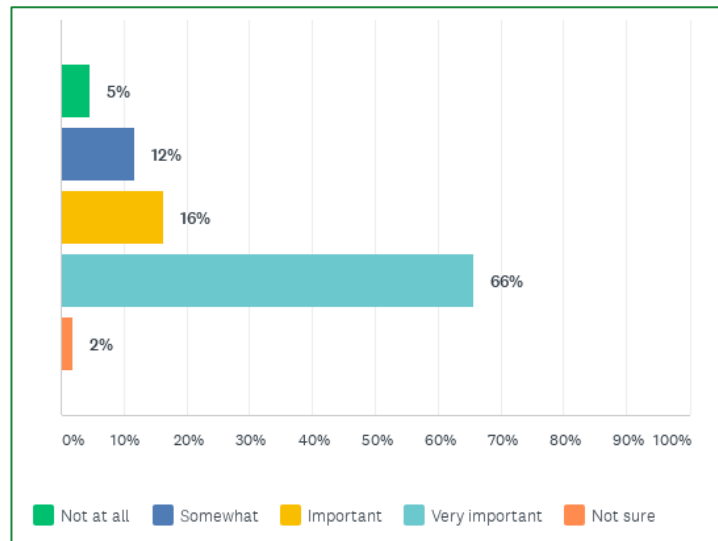
very important
or important



The key themes that respondents commented on most for this direction include a desire for initiatives to reduce car use in the CBD and/or to improve public transport, legislated building standards for new and existing buildings and requests for more EV charging stations for electric vehicles.

Direction 3 – Regenerative and inclusive city

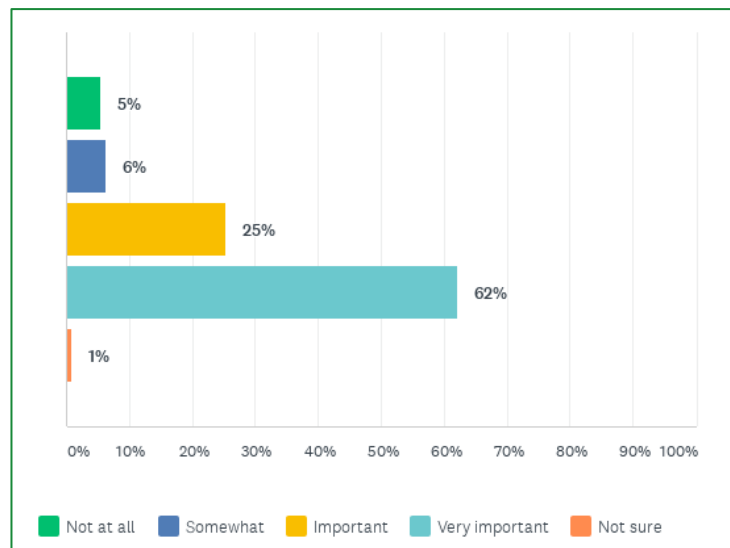
82%
very important
or important



The key themes that respondents commented on most for this direction include recognition that community connection and First Nations knowledge are important to sustainable principles, and concern for water and air pollution. In addition, some respondents found this set of actions to be less clear.

Direction 4 – Strong foundations for delivery

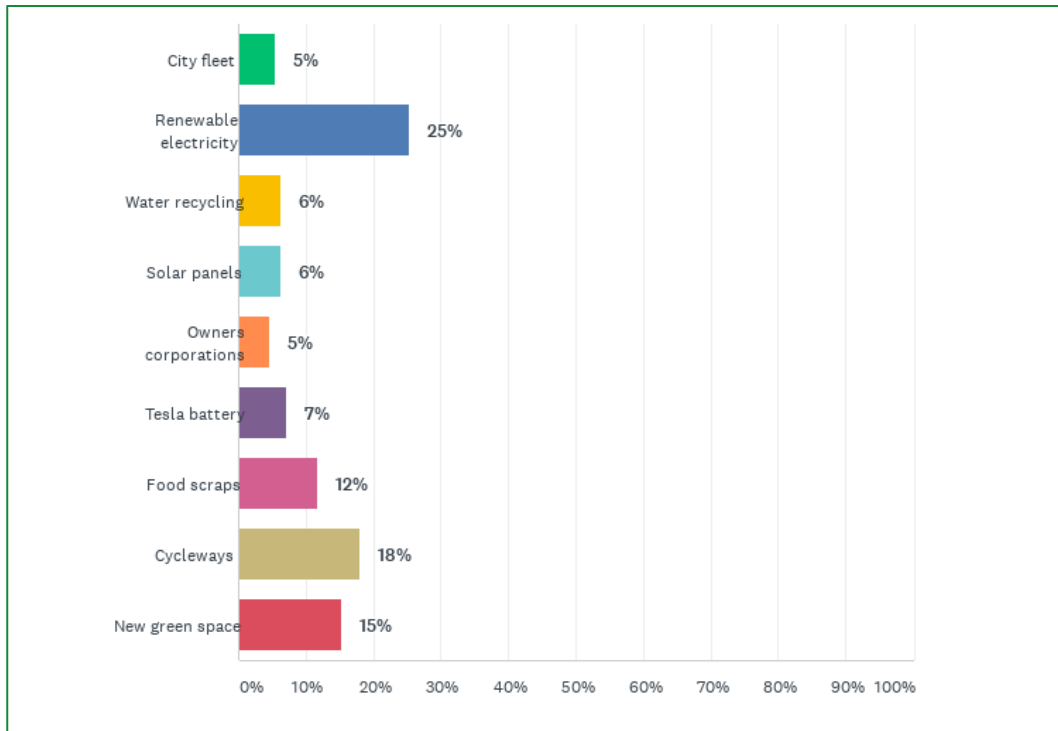
87%
very important
or important



The key themes that respondents commented on most for this direction include that achieving the targets will take strong and dedicated leadership from the City, in the form of ongoing consultation, and engagement and capability building for City staff and for the community. Another key theme was respondents' desire for clear and transparent data used by the City of Sydney to report on environmental performance.

Achievements

We gave respondents nine examples of actions that the City has already taken and asked them to select the one that resonated most. We then asked why that achievement resonated with them. Below are the selections respondents made and some quotes about each image from survey respondents.



Renewable electricity



"It's fantastic to see City of Sydney take leadership on this and it makes me optimistic that the state and federal government will realise that smart environmental choices can go hand in hand with economic development."

Cycleways



“My extended family all cycle as our main form of transport and some of us are raising children in Sydney. These cycleways are not just “saving the environment” for us, they’re saving our lives.”

New green space



“We need to have more NATURAL green spaces to reduce the urban heat island effect, cool our cities and increase tree canopy. It is important to talk about natural green space.”

“Cities need to be more than just work spaces. To bring life to a city there needs to be green spaces so people want to live in and enjoy the city.”

Food scraps



“Working close to the waste management industry and foodservice industry, I can say that having a Food scraps program will help to reduce large amount of waste from the landfill.”

Tesla battery



“It's important the City supports innovative technology to support renewable energies.”

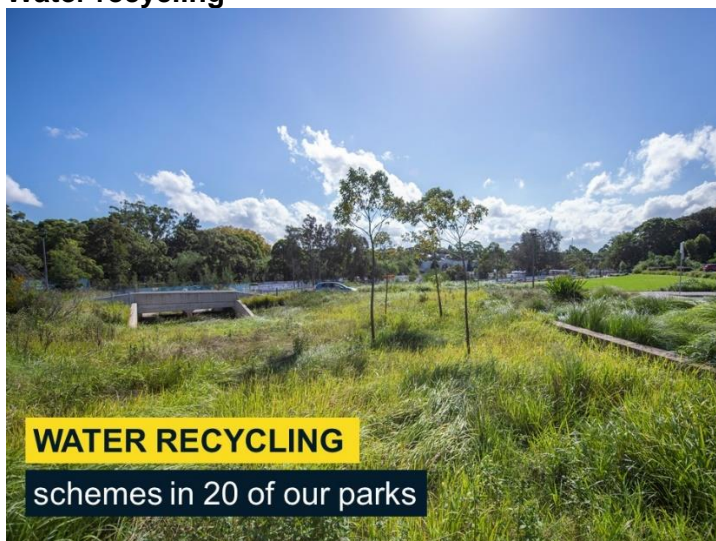
“I really like the batteries already installed in Alexandria. It would be great to provide incentives for home owners and businesses to install rooftop solar and private batteries/shared community batteries funded collectively.”

Solar panels



“We should continue to consider the roof space on buildings in the CBD, suburbs and surrounding areas for solar installations to continue to make a positive impact on the use of renewables.”

Water recycling



“The transformation at Sydney Park is acknowledged, as is the importance of changing the way we use water to be more efficient. Alternate sources of water are vital moving forward.”

Owners corporations



“The Owners Corporation Network (OCN) applauds the City of Sydney for their strong and ongoing advocacy and support for a Green Global and Connected Sydney. The environmental results and outcomes as summarised in the City's draft Environmental Strategy 2021-25 are impressive and we are proud to be a partner with the City in the achievement of sustainable residential apartment communities.”

City fleet

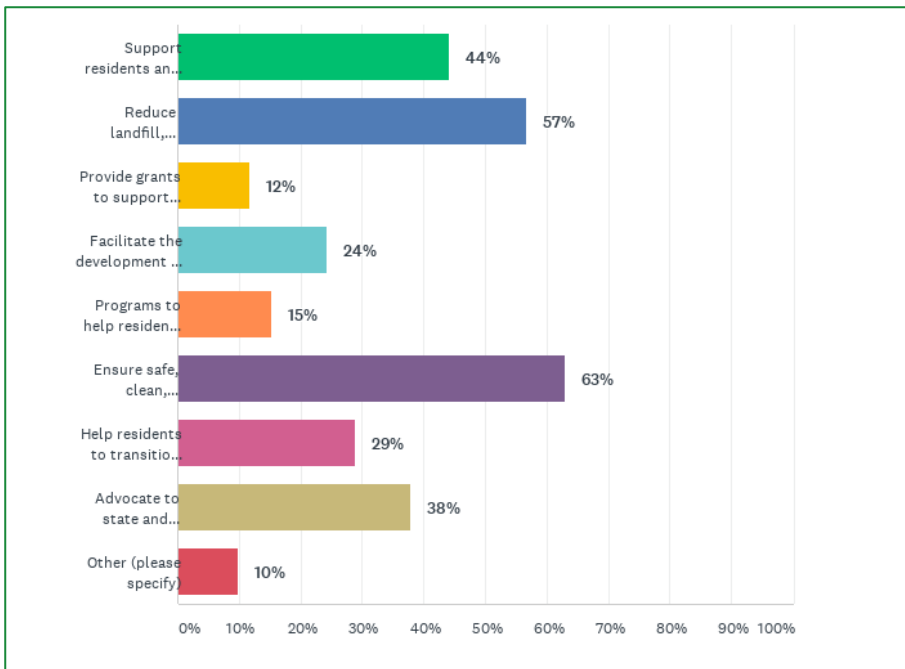


“Electric vehicles for the City's fleet provides a model for businesses and citizens to follow suit. It lowers emissions and avoids roadway pollution.”

Priorities

We asked respondents if we could do only three things from the list below, what are the most important things for the City to focus on? Most respondents selected ‘Safe, clean, affordable and accessible options for walking, cycling and public transport’ (63%), followed closely by ‘Reduce landfill, improve recycling and support a circular economy’ (57%) and ‘Support residents and businesses to switch to renewable electricity’ (44%). There were 11 ‘other’ comments; these are captured in the submissions table below.

Engagement report – draft Environmental Strategy 2021-2025 and draft Environmental Sustainability Policy



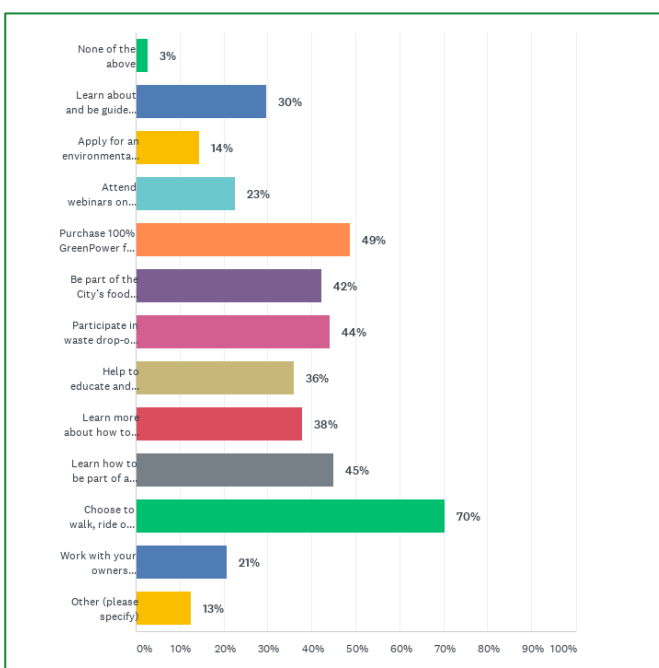
63%

Safe, clean, affordable and accessible options for walking, cycling and public transport

- Support residents and businesses to switch to renewable electricity (44%)
- Reduce landfill, improve recycling and support a circular economy (57%)
- Provide grants to support businesses and organisations deliver environmental initiatives (12%)
- Facilitate the development of more recycled water schemes (24%)
- Programs to help residents and businesses cut water and energy bills (15%)
- Ensure safe, clean, affordable, and accessible options for walking, cycling, and public transport (63%)
- Help residents to transition to electric vehicles (29%)
- Advocate to state and federal government for more action on climate change (38%)
- Other (please specify) (10%)

Working together

We asked people to select the things they are interested in being involved in. Seventy percent of respondents selected 'Choose to walk, ride or take public transport', followed by 'Purchase 100% GreenPower from my electricity provider' (49%). There were 14 'other' comments; these are captured in the submissions table below.



70%

Choose to walk, ride or take public transport

49%

Purchase 100% GreenPower from my electricity retailer

Engagement report –
draft Environmental Strategy 2021-2025 and draft Environmental Sustainability Policy

- None of the above (3%)
- Learn about and be guided by Aboriginal Caring for Country principles (30%)
- Apply for an environmental grant or sponsorship program (14%)
- Attend webinars on reducing water and energy use in the home (23%)
- Purchase 100% GreenPower from my electricity retailer (49%)
- Be part of the City's food scraps program (42%)
- Participate in waste drop-off days (44%)
- Help to educate and involve my local community in sustainable initiatives (36%)
- Learn more about how to choose a bank or superannuation fund that doesn't invest in fossil fuels (38%)
- Learn how to be part of a circular economy (45%)
- Choose to walk, ride or take public transport (70%)
- Work with your owners corporation to reduce energy and water use in your apartment building (21%)
- Other (please specify) (13)

Subjects/issues raised in submissions

Several subjects/topics were raised in the feedback received. These were presented as concerns, suggestions and/or requests and are summarised below.

Action 01. Deliver energy, water and resilience outcomes through asset design and management	Total	City of Sydney Response
Electric vehicles Encourage more electric vehicle use through specifications in city contracts rather than just the city fleet.	1	The City values suppliers who share a commitment to achieving leading and innovative environmental performance. The Procurement Returnable Schedules have been developed for prospective suppliers to align their service provision to the City's objectives in relation to environmental performance and other elements that support a circular economy.
City owned buildings More effort for a robust energy demand reduction element for relevant City buildings.	1	Emissions from City operations have reduced 31% through energy efficiency and on-site renewable electricity generation. Action 1 including ongoing work on building efficiency
City owned buildings What NABERS rating will be used for City-owned buildings?	1	We are targeting a 5 star NABERS Energy and 4 Star NABERS Water ratings at relevant City-owned buildings
City owned buildings 4 Green Star is mentioned, but this is mid-level performance.	1	Noted
There is a perception that waste contractor emissions are not counted by City of Sydney.	1	<p>The City's national carbon offset disclosure and certificate is available at https://www.cityofsydney.nsw.gov.au/surveys-case-studies-reports/green-reports.</p> <p>This document provides a description of the scope emissions measured by the City and includes contracted services emissions as scope three indirect emissions. They are indirect emissions because accounting for them as a direct emission sits with</p>

Engagement report –
draft Environmental Strategy 2021-2025 and draft Environmental Sustainability Policy

		the organisation operating the vehicle. We also take care not to double count emissions where contracted service providers also undertake emissions reporting to the climate active standard.
I am not sure which scope emissions are included? This is not clear. Very keen to support the City to set ambitious targets on embodied carbon and then a Science Based Target looking at your Scope 3 emissions.		<p>The City's national carbon offset disclosure and certificate is available at https://www.cityofsydney.nsw.gov.au/surveys-case-studies-reports/green-reports.</p> <p>This document provides a description of the scope emissions measured by the City.</p>
Action 04. Ensure the City's programs and services use resources efficiently	Total	City of Sydney Response
Contractor responsibilities Request for Environmental Sustainability Policy wording be to clearer regarding responsibility of service providers, grantees and event organisers.	1	The application of the policy for external parties will be implemented through agreements that the City establishes with these parties including supplier contracts, lease, grant, venue or service agreements. In addition, the Policy will be incorporated into the City's Supplier Code of Conduct and Grant guidelines.
Contractor behaviour Make your contractors environmentally aware as well. Council trucks and "Skyline" contractors in particular need to be instructed to turn off engines when stationary. All whipper snippers, edges and lawnmowers to be electric and ban leaf blowers.	2	Noted. The City values suppliers who share a commitment to achieving leading and innovative environmental performance. The Procurement Returnable Schedules have been developed for prospective suppliers to align their service provision to the City's objectives in relation to environmental performance.
City services Regular surveys to get real feedback on how residents perceive services delivered. I see nothing here about how rate payers perceive services delivered.	1	Noted. Feedback has been passed on to services teams.
Action 06. Reduce embodied carbon in our supply chain and support circular economy outcomes	Total	City of Sydney Response
Concern over environmental impact of synthetic fields.	4	We are reviewing strategies to improve the environmental performance of synthetic fields, by looking at materials, design and operational measures.

Engagement report –
draft Environmental Strategy 2021-2025 and draft Environmental Sustainability Policy

Action 08. Improve energy efficiency, water efficiency and waste management in existing buildings	Total	City of Sydney Response
Conduct low cost environmental audit for not for profits which have houses and offices as part of their business, so they can create a cultural change around environmental practices.	1	Noted
Action 10. Support the transition to zero-emissions transport	Total	City of Sydney Response
Density and transport Would like to see detail on densifying around transit, increasing access to amenities for residents within their neighbourhoods to reduce trips/trip length, etc.	1	Land use planning is addressed in the City's City Plan 2036: https://www.cityofsydney.nsw.gov.au/strategic-land-use-plans/city-plan-2036
Zero emission zone Ideally city should advocate for a zero emission zone rather than a low emission zone	1	Noted
Vehicles		
Support reducing vehicles in the CBD	14	A comprehensive and connected bike network across the city will encourage more people to cycle locally, also reducing reliance on cars to get around.
Congestion charge and reduction in car driving.	1	Out of scope of this strategy. Comments have been passed on to our transport team
Single carriageway roads in the city, to encourage a car-free city.	1	Out of scope of this strategy. Comments have been passed on to our transport team
Lower speed limits.	2	Out of scope of this strategy. Comments have been passed on to our transport team
Action to get diesel trucks and buses off the road.		Out of scope of this strategy. Comments have been passed on to our transport team
City should not discriminate against people who drive cars. Lack of parking and high parking fees have a heavy influence on where people shop and eat out.	1	Out of scope of this strategy. Comments have been passed on to our transport team
Stop providing car-friendly short cuts through high pedestrian activity zones like Central Park.	1	Out of scope of this strategy. Comments have been passed on to our transport team
Walking and riding		
More, safe cycleways	14	Action 10 'Support the transition to zero-emissions transport' includes continuation of the City's work to improve conditions for walking and cycling in the local area
Not in support of cycleways	4	Noted
Look to other countries' cycleway models to improve safety and build positive cyclist behaviours.	2	Action 10 'Support the transition to zero-emissions transport' includes continuation of the City's work to improve conditions for walking and cycling in the local area

Engagement report –
draft Environmental Strategy 2021-2025 and draft Environmental Sustainability Policy

Comments on cycleways and safety concerns.	3	Out of this strategy's scope. Comments have been passed onto the City's cycling team
A shift away from private cars is exactly where we need to be going, so it would be great to see that walking and cycling are viable - and FAST - options in every corner of the city. For example, why does George St not have a cycleway included on it? This could be implemented very safely to be a great, direct corridor for cyclists into the middle of the city.	1	Out of this strategy's scope. Comments have been passed onto the City's cycling team
Request for clearer targets, such as including how many new cycleways installed. The city needs to set the strong targets and create urgent change the people want.	1	The City's public Green Report reports on progress to targets, including for Active Transport including walking, cycling and public transport trips in the LGA. Updates on cycleway developments are also contained in the Green Report.
Too much reliance on electric vehicles could hinder the uptake of public transport, cycling and walking. Those modes require shorter distances and less urban sprawl, but cars (even electric ones) promote urban sprawl.	1	Action 10 'Support the transition to zero-emissions transport' includes continuation of the City's work to improve conditions for walking and cycling in the local area
Public transport		
Let people take dogs on public transport.	1	Noted. Public transport is a State Government responsibility.
More support for public transport required.	1	Noted. Public transport is a State Government responsibility.
Comment that bus services should not be cut, like the minister of transport is trying to do.	1	Noted. Public transport is a State Government responsibility.
Electric vehicles (EVs)		
Electric vehicles for the City's fleet provides a model for businesses and citizens to follow suit. It lowers emissions and avoids roadway pollution.	6	Noted
Suggestions/requests for EV information resources and guidelines on electric vehicle charging.	2	The City will look to provide more information on its website
Request for clearer support of EVs, such as including how many numbers of new electric charging stations installed. The city needs to set the strong targets and create urgent change the people want.	1	The introduction of zero emissions vehicles, such as electric vehicles and buses, are also an important part of reducing emissions from the transport sector – particularly as the electricity grid becomes green.
Pymont Action calls on the City to commit to developing an EV Charging Infrastructure Plan, and to immediately establishing a stakeholder working / consultative framework. These actions will engage the energies and interests of residents and other stakeholders to accelerate the drive to electric vehicles ownership and use in the City of Sydney.	1	With kerbside space at a premium, on street private vehicle parking has generally decreased as the City prioritises that space for walking, cycling and public transport. Given the kerbside space limitations the City is focused on supporting electric vehicle charging in off street spaces, such as residential and commercial buildings.
Charging stations There is not enough planned for EV charging stations.	7	

Engagement report –
draft Environmental Strategy 2021-2025 and draft Environmental Sustainability Policy

Charging stations City could take responsibility for the roll out of slower, longer dwell destination and AC chargers in the LGA (in contrast to NSW Govt's focus on ultra-fast chargers along commuter corridors)	1	We are currently investigating the provision of electric vehicle charging infrastructure in all new developments.
Charging stations What support is City of Sydney looking to provide for off-street charging? Will this be for private, business, or public locations (i.e. car parks)?	1	
Car share More car share facilities in apartments and support them to switch to electric.	1	
Concern over higher cost of EVs and difficulty to charge are barriers to take up.	1	
Incentives Provide grants and/or alternative incentives to building owners/corporations to encourage transition to zero-emission fleets within apartment communities.	2	The City will consider this in the forthcoming grants program review
Incentives Are rebates/grants for installing home chargers being considered?	1	The City is not considering this at the current time.
Planning instruments Given the shift to EVs, the maximum provision of parking in the Development Control Plan should be amended to a minimum provision of parking (with EV charging) at a much higher rate. This will reduce barriers to EV, and places burden on developers, not community and Council.	1	We are currently investigating the provision of electric vehicle charging infrastructure in all new developments.
Planning instruments Require all new basement parking to have the provision of not only electricity for each car spot, but an actual charger as this will reduce barriers for owner occupiers and renters.	1	
Planning instruments The city mentions limited powers on decarbonizing transport (except re: building off-street electric charging) but planning tools can help reduce vehicle kilometres travelled and have a substantial impact on transportation-related emissions over time.	1	
Action 11. Encourage community uptake of renewable electricity and stimulate the green economy	Total	City of Sydney Response
Showing the way on renewables has direct impact and showcases leadership	21	Noted
Energy usage and costs often come out of strata fees, rather being charged directly to the individual residents, leading to no accountability and wasteful behaviour.	1	The City works with strata communities to support more effective decision making around environmental performance
Planning Call for council and government intervention and support around the following:	6	The City provides targeted information materials on climate action and renewable energy for different groups in the community,

Engagement report –
draft Environmental Strategy 2021-2025 and draft Environmental Sustainability Policy

<ul style="list-style-type: none"> - renters ability to access to solar, water tanks, tree planting to reduce heat effects and battery recharging for electric cars - increase in people living in apartments and many occupants lack of control to influence body corporates to address climate change 		including renters and apartment dwellers: https://renewableenergy.cityofsydney.nsw.gov.au/
Planning Residential building codes to: <ul style="list-style-type: none"> - increase thermal homes, double glazing, solar batteries, balcony gardens, reduce energy - create incentives - ban fire pits and wood fireplaces etc 	2	The City advocates for improvements to the National Construction Code, which is the responsibility of the Federal Government
Batteries We need batteries to support renewable energy	5	Noted. The City has installed a Tesla Battery at its Alexandra Canal Depot, to ensure most effective use of the solar power generated on-site.
Solar PV There is still space in the CBD that could be used for solar PV	4	The City provides targeted information materials on renewable energy for different groups in the community, including businesses: https://renewableenergy.cityofsydney.nsw.gov.au/
Renewable electricity is a symbolic milestone that means more outside our local bubble, showing strong leadership. Going 100% renewable is the quickest way to reduce emissions and it's a measurable target.	2	The Strategy supports the shift to renewable energy
Thermal power generation Shifting away from thermal power generation is the one of the key actions everyone must take to address the climate crisis.	1	The Strategy supports the shift to renewable energy
Innovation Would love to see more trials on use of innovative zero carbon projects and materials - setting of some targets as well.	1	Action 17 'Support the development of circular economy systems' outlines the City's intent to continue working in this area
Consider nuclear energy	1	Noted
Net zero energy is an environmental fallacy! Electric vehicles are not magically 'clean'. Please check out for instance the book Bright Green Lies by Derrick Jensen, Lierre Keith and Max Wilbert. Highly recommended!! Yes we must combat climate change as a priority. But that in itself does not make any of this 'sustainable'. Please don't stop or rest your thinking there.	1	Noted
Decrease use of gas The City has missed a rare opportunity to decrease the volume of gas consumed within the local area. By restricting the use of gas cooking and heating in homes, the City would be acting in the long-term health interests of resident as well as helping them save money on bills.	2	The City's proposed planning controls for net zero energy new buildings will encourage new buildings to move away from gas use

Action 12. Support our residents to reduce utility costs and environmental impact	Total	City of Sydney Response
Smart Green Apartments Strongly encourage the City to continue the SGA program delivering proactive and successful actions.	1	The Smart Green Apartments program has had some great successes and continues as an active program.
Implementation and support across metropolitan Sydney The Owners Corporation Network (OCN) is committed to continuing our partnership with the City, and would be especially keen to discuss how we could work with the City to help expand this vital range of support across metropolitan Sydney, perhaps through the Resilient Sydney platform.	1	Noted. This information has been passed on to the Sustainability Programs team
Short term letting Concern that short term letting threatens apartment communities putting a focus on sustainability initiatives. Relevant articles provided below to support comment. OCN Policy AFR Article Additional comment that this is of particular concern to the Pyrmont area.	1	Noted. Outside the scope of this strategy
Social housing should have solar power; the blocks in Redfern (and elsewhere) where I live can be made exemplary in how to make the transition to renewables.	1	Noted. Social housing is the responsibility of the NSW State Government
It would be amazing if my apartment had a rooftop garden or solar panels, but that involves convincing the Owners Cooperation to act and spend.	1	The City works with strata communities to support more effective decision making around environmental performance
While I purchase my energy from a carbon neutral provider, Green Power costs more.	1	There is information on the City of Sydney's webpage about purchasing and negotiating Green Power. https://www.cityofsydney.nsw.gov.au/guides/climate-action-for-residents
Action 13. Help business to reduce utility bills and demonstrate environmental achievement	Total	City of Sydney Response
The city needs to assist in providing tools to workplaces and retail outlets that can achieve step changes necessary to get to the reductions in energy, water use and waste production targeted.	1	Through the City's involvement in the CitySwitch and Better Building Partnership programs, there are initiatives, tools and guidelines in use to support changes in sustainable behaviours.
Action 14. Incorporate the perspectives of Aboriginal and Torres Strait Islander people in environmental action	Total	City of Sydney Response

Engagement report –
draft Environmental Strategy 2021-2025 and draft Environmental Sustainability Policy

Community connection and Indigenous knowledge are so important to sustainable principles.	5	Action 14 reflects the City's commitment to integrating Aboriginal and Torres Strait Islander perspectives into environmental action
Why does the Aboriginal community specifically have to be separated for this aim.	4	The City perceived an opportunity to specifically draw on the traditional knowledge and perspectives of Aboriginal and Torres Strait Islander people in our community
I would love for the City of Sydney to come to the party and think about conservation, what 'caring for country' actually means (not more paved surfaces, not synthetic sports fields, not 'pocket parks'.	1	Action 14 reflects the City's commitment to integrating Aboriginal and Torres Strait Islander perspectives into environmental action
Action 17. Support the development of circular economy systems	Total	City of Sydney Response
I am confident in the City's ability to bring about a circular economy by working with stakeholders across community, business and government.	1	Noted
Look into adopting the Doughnut Economics model like Amsterdam - this would be a strong message and important demonstration	1	Noted
Should explain what 'support circular economy outcomes' means - it presumes a certain amount of knowledge, I'm not even sure what it means	1	Page 54 of the Strategy explains that: The circular economy has three principles: designing out waste and pollution; keeping products and materials at their highest value for as long as possible; and regenerating natural and social systems.
We should be designing / driving out waste in the first place through the circular economy outcomes, rather than remediating the waste that is there. I feel this needs a bigger focus.	1	Action 17 'Support the development of circular economy systems' outlines the City's intent to continue working in this area
Action 18. Drought-proof the city by facilitating water recycling	Total	City of Sydney Response
Support for water recycling	5	Noted
Effective use of storm water run-off and other water collection is vital moving forward.	1	The City captures storm water for reuse in several parks
More education and effort needed to encourage people to reduce their water use.	2	The City encourages water efficiency through its various sustainability programs targeted to residents and businesses
The transformation at Sydney Park is acknowledged as is the importance of changing the way we use water to be more efficient.	1	Noted

Engagement report –
draft Environmental Strategy 2021-2025 and draft Environmental Sustainability Policy

We cannot continue using water as we have, it doesn't make sense to use fresh and potable water for flushing toilet or irrigating gardens. It does not make sense neither to get rid of rainwater as quickly as possible and let it sluice away to the sea. Indeed, water needs to infiltrate into the soil and regenerate local water cycle. This will avoid heat island effect in city, not more concrete to let water runs away from the soil.	1	The City uses water in the landscape through a range of Water Sensitive Urban Design (WSUD) treatments, including many of the examples provided in the submission.
For water recycling, using greywater for park irrigation would be a good outcome and goal to aim for.	1	The City has developed several climate resilient water supplies which we utilise for watering in the public domain including the Sydney Park stormwater harvesting project, the precinct wide stormwater harvesting system in Green Square and our groundwater supplies. The City continues to investigate and develop new local scale projects to support greening.
It has been evident that flooding has reduced over the years. However the City needs a big new park - not strips adjacent to commercial buildings.	1	Noted
Install water efficient equipment into buildings such as tap aerators, dual flush, etc,	1	The City encourages water efficiency through its various sustainability programs targeted to residents and businesses
Action 19. Regenerate polluted waterways, air and land	Total	City of Sydney Response
Glebe island concrete plant Concern over noise, air and water pollution from concrete plant and daily port movements outlined by the State Dept of Planning and Ports Authority. <ul style="list-style-type: none"> - Is this consistent with the City of Sydney Strategy? - Is there anything the City of Sydney can do to stop this? 	2	A State Significant Development Application (No. SSD-8544) is currently under consideration by the Independent Planning Commission (IPC) for the Glebe Island Concrete Batching Plant. The proposal relates to the construction of a concrete batching plant and a new aggregate handling facility with a shipping terminal. Noise and air quality concerns were issues continually raised by the City in submissions to the Department of Planning, Industry and Environment (DPIE) throughout the assessment of the application. The City addressed the IPC in May 2021. The Lord Mayor also sent a letter to the IPC reiterating the City's comments and providing support for the members of the Pyrmont community.

Engagement report –
draft Environmental Strategy 2021-2025 and draft Environmental Sustainability Policy

		<p>While air quality and acoustic impact assessments were found by the NSW Environment Protection Authority (EPA) to comply with relevant regulations, the City strongly pushed for consideration of a more sustainable energy source when ships are berthed at docks (like shore to ship electrical power). This would dramatically reduce the noise, air and water pollution impacts that the ships would have on the environment. Additionally, the City recommended that conditions of consent be imposed to ensure air quality and noise control is regularly monitored and maintained during construction and operation of the facility, including compliance with all mitigation measures and noise policy benchmarks.</p> <p>In regards to compliance action, because the site is in the Inner West Council area, our compliance unit can't take any action should they find the site is not complying with any conditions of consent, this would be a matter for Inner West Council and the relevant State bodies.</p>
<p>Reminding the City of its commitment in its Clean Air Cities declaration template to include the following in Sustainable Sydney 2050:</p> <ul style="list-style-type: none"> - Meet C40 Climate Action Plan requirements and should make reference to WHO guidelines [for air quality] - Sustainable Sydney 2050 to include reference to air quality guidelines and priority focus areas while meeting C40 Climate Action Plan requirements. 	1	Noted for consideration for the Sydney 2050 review process.
Action 20. Reduce the amount of residential waste sent to landfill through avoidance and resource recovery	Total	City of Sydney Response
Particularly for people living in apartments and small spaces, food scraps helps to reduce waste destined for landfill where there is strong desire to do so, but where there hasn't always been the ability to dispose of food scraps for composting.	11	The City's foods scraps recycling program is now available to over 11,000 households
Should be an integrated program that accepts food scraps, garden organics and compostable packaging.	4	There are two reasons why the City doesn't allow food scraps in our green lid garden organics bin at present. Firstly, our garden organics are sent to a specialised recycling facility which only accepts garden

Engagement report –
draft Environmental Strategy 2021-2025 and draft Environmental Sustainability Policy

		organics for processing into mulch, soil conditioners and composts which are used for landscaping and in parks and gardens. This facility does not accept food waste. Secondly, the majority of the City's residents live in apartments and don't generate enough garden waste to make a combined food and garden organics service viable. This is why we believe a separate food scraps recycling service is a better solution for our residents.
Suggestion to use more imagery and languages in food and garden organics campaigns to educate people with limited English literacy.	1	The City provides bi-lingual (English and Chinese) information about some of our waste and recycling services, include our food scraps recycling trial.
Include a clear strategy to reduce / ban single-use plastics.	2	The City works to reduce single-use plastics in its own operations and with our partners, and advocates for changes to these requirements, which are the responsibility of the NSW State Government
Campaign to promote compostable packaging for the food service industry. Incentivise switch to compostable packaging.	2	The City advocates for changes to these requirements, which are the responsibility of the NSW State Government
Ban on smoking in the streets.	1	Noted
Recycling hubs for hard and soft plastic, electronics/ batteries, timber and cardboard packaging.	1	The City hosts Recycle It Saturdays as a quarterly event. In addition to electronic waste, residents can recycle soft plastics, used textiles and shoes, expanded polystyrene, large cardboard, garden organics, paint and gas bottles. The City also hosts an annual Household Chemical Cleanout DropOff.
Definitely need to do something more about recycling landfill content.	1	Noted
Education and reporting programs to reduce waste and build community capacity to implement themselves. It's up to the community to implement to the change but Council needs to drive it and have initiatives available to the community to participate in.	1	The City runs regular programs across the community about waste avoidance delivered by our waste avoidance education team.
Strategy context (comments referencing other key strategies)	Total	City of Sydney Response
Greening Sydney strategy	20+	Beyond the scope of this strategy.

Engagement report –
draft Environmental Strategy 2021-2025 and draft Environmental Sustainability Policy

<p>There were various comments on biodiversity, habitat for wildlife, greening the city to mitigate heat, creating different range/character of green and natural spaces, supporting more native planting, planting for food production, resilience and water management.</p> <p>Consider the relationship between ensuring the city is green and how that relates to the way our indigenous ancestry would see our city. Green is not always the preferred option if you are seeking more resilient vegetation that may change its colour depending on the season</p>		<p>The City plants a mixture of native, exotic, evergreen and deciduous species. Species selection involves many complex considerations, which broadly fit into three main categories: environmental, functional and aesthetic.</p> <p>We appreciate that there may be various views on the types of trees planted, and that it is hard to always achieve a tree species that everyone supports. Refer to the City's Greening Sydney strategy for more information.</p>
Targets	Total	City of Sydney Response
Targets should be more ambitious or are unclear	23	<p>The City's targets are measurable wherever possible and are reported in the City's annual Green Report.</p> <p>There are specific, measurable targets for energy, water and waste performance for our own operations and the local area, and also for sustainable goals and initiatives such as active transport. The City uses a third party platform to aggregate local (non operations) data for reporting to the Green Report.</p>
It is important that stakeholders be kept informed on performance against these KPIs and milestones.	1	
Implement a non-biased reporting system on how council is tracking. Include aggregate data for experts to scrutinise and provide meaningful feedback.	2	
Some targets are dependent on state and/or federal governments which are not supportive of climate action	5	<p>The City maintains a variety of advocacy programs to work with state and federal governments, as well as with other council areas to seek continually developing environmental performance standards. These programs are reported on in the annual Green Report.</p>
I think the targets are great, but there are things that we're not doing that we could be doing (e.g. having buildings used for multiple purposes, more vertical/roof gardens and financial incentives for this) and how the targets will be achieved is not clear enough.	1	<p>Noted. The City's targets are measurable wherever possible and are reported in the City's annual Green Report.</p>
This will have a powerful impact on reducing the city's footprint; would be good to have some targets developed for the diversion to landfill and circular economy and in particular embodied carbon - Actions 5 and 6	1	<p>These targets are provided on pages 11 and 12 for City operations and for the local government area.</p>
Hard to understand how significant these achievements may be, e.g. 19 electric cars, but out of how many? 20? or 200?	1	<p>The City has a total of 330 fleet vehicles.</p>
Other comments	Total	City of Sydney Response

Engagement report –
draft Environmental Strategy 2021-2025 and draft Environmental Sustainability Policy

Comments in support of strategy	30+	Noted
Communications Communication to the community (eg: in the form of advertising or billboards) to build awareness, desire and capability to act sustainably.	6	The City uses multiple communication channels to engage with the community on environmental action
Education The City should provide education to people about climate change in order to gain support for action. It is important to start these messages in schools, universities, workplaces so that every resident including NES can understand the message so visual as well as words. Involve residents in regeneration. Programs that help people understand the natural environment of where they live and help to heal it.	5	Noted. The City provides a range of community activity designed to promote awareness and action on climate change. Sydney City Farm, City Talks and Cycling courses are some of these. We also engage with the residential and business sectors through our Smart Green Apartments, Sustainable Office and Sydney as a Sustainable Destination programs. We also maintain strong engagement via our community consultation networks with local schools and community groups. Our print media, on finalisation is also produced to reader accessibility requirements. Noted
Focus on business and city building and not enough to address day to day behaviours	1	
Education Facilitate Climate Collage workshops to educate people, including children on Climate Change.	1	
Independent voices should be given avenues to express their needs for a fair and sustainable economy that is not dictated to by big corporations.	1	The City's <u>Community Engagement strategy</u> outlines our approach to engaging the community in decision making processes.
Promote plant based and vegan lifestyles and businesses	2	Our Sustainable Event Guidelines contain a reference to provide sustainably sourced menu items including vegetarian options.
Development Reduce developments in backyards of already tiny properties. This development reduces green space and increases population density, putting further pressure on environment.	3	Land use planning is addressed in the City's City Plan 2036: https://www.cityofsydney.nsw.gov.au/strategic-land-use-plans/city-plan-2036
Development Concern that progress will be outstripped by increasing development and population density. Fish markets and Wentworth Park were raised as examples of areas of concern.	6	
Consultation process Perception that consultation process is not genuine. Criticism that it is not conducive to honest feedback and more about marketing the achievements of the City.	1	Noted. This draft strategy was informed by extensive community consultation in 2019 as part of the development of the City's new Community Strategic Plan. The <u>consultation program</u> included engagement with children, young people, culturally and linguistically diverse communities, Aboriginal and Torres Strait Islander communities,
Consultation process Strategy document is too long / dense and this made it difficult to answer some questions. Concern that this doesn't encourage culturally	1	

Engagement report –
draft Environmental Strategy 2021-2025 and draft Environmental Sustainability Policy

and linguistically diverse and low literacy communities to participate.		<p>business, industry, and the broader community.</p> <p>The public exhibition of this draft document is one step in an ongoing dialogue we have with our community about their aspirations for the future of Sydney and how we should be taking action on climate change.</p>
Staff capacity is a major problem. The separate contracting out of services means no one has overall perspectives - they all work on a tiny part of the picture.	1	We measure and monitor performance of our operations using data obtained from our own buildings and facilities (eg: utility energy consumption), as well as collecting, measuring and monitoring data from our service providers. Through our SMART environmental performance system we maintain an overall picture of the City's operational and environmental performance.
It is not the City's role to lobby for climate change at state and federal level.	1	<p>We work closely with state and federal governments through our advocacy programs. When we declared a climate emergency, we were one of 85 councils, representing 7.4 million people, declaring a climate emergency at time of publishing. Our councils are among over 1300 jurisdictions in more than 25 countries to take this step..An e-petition submitted to the Australian Parliament in October 2019 is another example of the groundswell of support for action on climate change. It called on the Australian Government to declare a climate emergency. More than 400,000 people signed the petition, making it the biggest parliamentary e-petition in Australian history. In an emergency, we must all act.</p>
Eliminate the City Strategy. Follow the State & Federal strategies	1	
It is very progressive strategy that has a challenge to match its ambition with its demographics	1	Noted
If the City and community work together, then I believe we can achieve these goals. If the City side with commerce, I have doubts about its success and commerce tends to favour themselves over what is good for the community.	1	<p>Action 6 'Reduce embodied carbon in our supply chain and support circular economy outcomes ' and Action 11 ' Encourage community uptake of renewable electricity and stimulate the green economy' both work to decouple economic growth from finite resources.</p>

Engagement report –
draft Environmental Strategy 2021-2025 and draft Environmental Sustainability Policy

The City of Sydney needs to set an example for smaller Councils who have less resources to implement change	1	The City of Sydney works with many other local Councils including Resilience Sydney. We also volunteer and collaborate with other councils in times of emergency. For example, to provide City staff to support after major bushfire and flooding events.
Request that the strategy directly address pollution with direct local impact on quality of life. In particular, (1) noise pollution and (2) runoff into the harbour that makes it unappealing for swimming. Notes that EVs and building design will contribute to this, but only if noise pollution is recognized as a design goal and design target.	1	Our requirement to avoid and address pollution is specified in the Environmental Sustainability Policy. This policy will be incorporated in to our operational and procurement guidelines and procedures.
Community involvement Please implement a climate assembly so residents continue to come together on this important issue.	1	Noted. The City engages the community throughout our strategy development and implementation and will continue to look at innovative ways to involve the community.
Community involvement Please remember the whole community - I am totally for action against climate change and live my life like that, but am deeply concerned that the strategy is for one sector of the community and has not looked at ways to satisfy city living.	1	Direction 3 focuses on a regenerative and inclusive city. Action 16 'Build community resilience and momentum on climate change supports working together for city work, life and play.
Affordability While I strongly agree that we need to move towards being more sustainable, I think being sustainable also needs to be economical so that residents and business will take it up (eg. incentivise public transport over private vehicle usage, dedicated cycle paths). A more environmentally friendly lifestyle should not just be for those who can afford it.	1	Action 10 'Support the transition to zero-emissions transport' includes continuation of the City's work to improve conditions for walking and cycling in the local area, also supported by Action 12 which supports our residents to reduce utility costs and environmental impact
Concern over bureaucratic council process.	1	Noted

Activities

Engagement and marketing activities undertaken to support the consultation included:

Sydney Your Say webpage

A Sydney Your Say webpage was created. The page included the draft strategy and online survey. There were 923 unique pageviews of the Sydney Your Say page and 287 downloads of the draft strategy.

Stakeholder briefing

An email was sent to 1,946 stakeholders inviting them to attend with information about the consultation and inviting feedback (see Appendix B). There were approximately 160 attendees at the meeting and 61 people downloaded the presentation from the briefing.

Aboriginal and Torres Strait Islander Advisory Panel

The draft strategy was presented to the City's Aboriginal and Torres Strait Islander Advisory Panel in May 2021.

Media activity

An exclusive ran with the Sydney Morning Herald, followed by a broad release. There were 159 media mentions, including syndication, with a total reach of 4.7m.

The story was syndicated multiple times and was given broad play on radio as well as in bespoke environmental and industry publications.

Digital marketing

A two-phase digital marketing campaign was rolled out to promote and support the consultation. Details can be found in Appendix A.

Appendix

Appendix A: digital media and marketing activities

Phase 1: awareness raising

An exclusive ran with the Sydney Morning Herald, followed by a broad release. There were 159 media mentions, including syndication, with a total reach of 4.7m.

A news article was created for the City of Sydney news site and featured in the City of Sydney News e-newsletter and shared on Facebook and LinkedIn. There were 752 unique pageviews of the news article.



Snapshot of media activity



City News article



LinkedIn



Facebook

Phase 2: drive traffic to consultation page via social media

Paid posts were created across LinkedIn, Facebook, Twitter and Instagram to drive people to the consultation page. Below are some examples of posts across different social platforms.



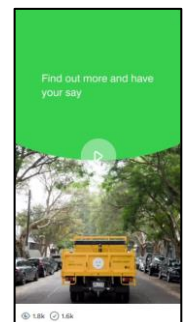
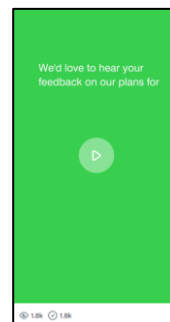
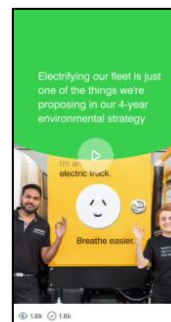
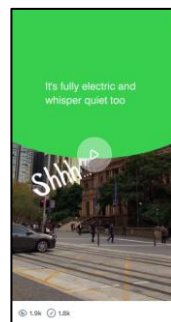
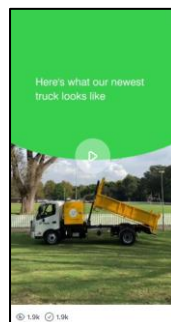
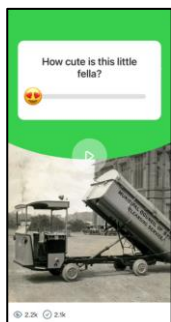
LinkedIn



Facebook



Twitter



Instagram story

Appendix B: invitation to stakeholders

An email was sent to 1,946 stakeholders inviting them to attend an online briefing and asking for feedback on the draft strategy.

