

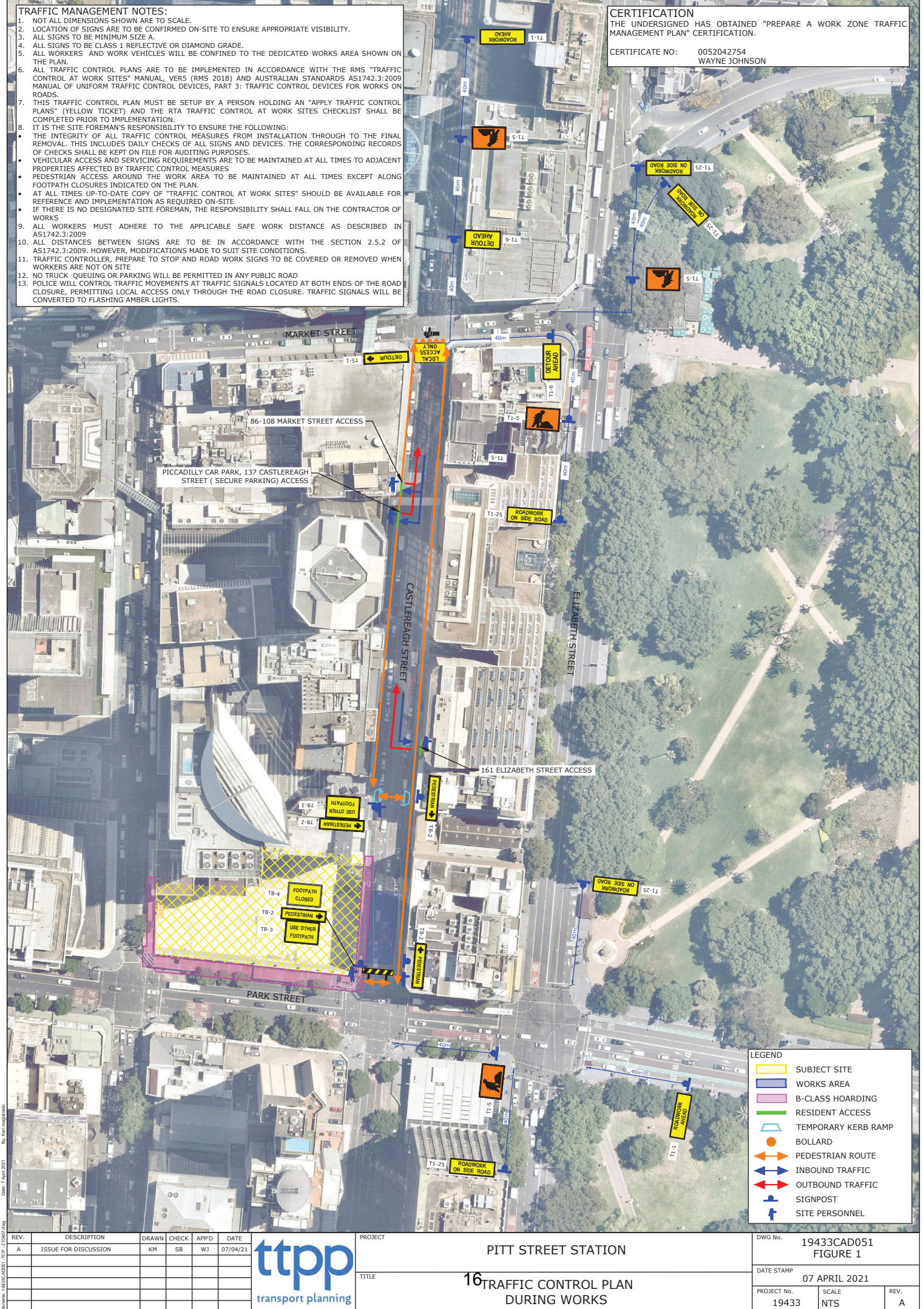
TRAFFIC MANAGEMENT NOTES:

1. NOT ALL DIMENSIONS SHOWN ARE TO SCALE.
2. LOCATION OF SIGNS ARE TO BE CONFIRMED ON-SITE TO ENSURE APPROPRIATE VISIBILITY.
3. ALL SIGNS TO BE MINIMUM SIZE A.
4. ALL SIGNS TO BE CLASS 1 REFLECTIVE OR DIAMOND GRADE.
5. ALL WORKERS AND WORK VEHICLES WILL BE CONFINED TO THE DEDICATED WORKS AREA SHOWN ON THE PLAN.
6. ALL TRAFFIC CONTROL PLANS ARE TO BE IMPLEMENTED IN ACCORDANCE WITH THE RMS "TRAFFIC CONTROL AT WORK SITES" MANUAL, VERS (RMS 2018) AND AUSTRALIAN STANDARDS AS1742.3:2009 MANUAL OF UNIFORM TRAFFIC CONTROL DEVICES, PART 3: TRAFFIC CONTROL DEVICES FOR WORKS ON ROADS.
7. THIS TRAFFIC CONTROL PLAN MUST BE SETUP BY A PERSON HOLDING AN "APPLY TRAFFIC CONTROL PLANS" (YELLOW TICKET) AND THE RTA TRAFFIC CONTROL AT WORK SITES CHECKLIST SHALL BE COMPLETED PRIOR TO IMPLEMENTATION.
8. IT IS THE SITE FOREMAN'S RESPONSIBILITY TO ENSURE THE FOLLOWING:
 - THE INTEGRITY OF ALL TRAFFIC CONTROL MEASURES FROM INSTALLATION THROUGH TO THE FINAL REMOVAL. THIS INCLUDES DAILY CHECKS OF ALL SIGNS AND DEVICES. THE CORRESPONDING RECORDS OF CHECKS SHALL BE KEPT ON FILE FOR AUDITING PURPOSES.
 - VEHICULAR ACCESS AND SERVICING REQUIREMENTS ARE TO BE MAINTAINED AT ALL TIMES TO ADJACENT PROPERTIES AFFECTED BY TRAFFIC CONTROL MEASURES.
 - PEDESTRIAN ACCESS AROUND THE WORK AREA TO BE MAINTAINED AT ALL TIMES EXCEPT ALONG FOOTPATH CLOSURES INDICATED ON THE PLAN.
 - AT ALL TIMES UP-TO-DATE COPY OF "TRAFFIC CONTROL AT WORK SITES" SHOULD BE AVAILABLE FOR REFERENCE AND IMPLEMENTATION AS REQUIRED ON-SITE
 - IF THERE IS NO DESIGNATED SITE FOREMAN, THE RESPONSIBILITY SHALL FALL ON THE CONTRACTOR OF WORKS.
9. ALL WORKERS MUST ADHERE TO THE APPLICABLE SAFE WORK DISTANCE AS DESCRIBED IN AS1742.3:2009
10. ALL DISTANCES BETWEEN SIGNS ARE TO BE IN ACCORDANCE WITH THE SECTION 2.5.2 OF AS1742.3:2009. HOWEVER, MODIFICATIONS MADE TO SUIT SITE CONDITIONS.
11. TRAFFIC CONTROLLER, PREPARE TO STOP AND ROAD WORK SIGNS TO BE COVERED OR REMOVED WHEN WORKERS ARE NOT ON SITE
12. NO TRUCK QUEUING OR PARKING WILL BE PERMITTED IN ANY PUBLIC ROAD
13. POLICE WILL CONTROL TRAFFIC MOVEMENTS AT TRAFFIC SIGNALS LOCATED AT BOTH ENDS OF THE ROAD CLOSURE, PERMITTING LOCAL ACCESS ONLY THROUGH THE ROAD CLOSURE. TRAFFIC SIGNALS WILL BE CONVERTED TO FLASHING AMBER LIGHTS.

CERTIFICATION

THE UNDERSIGNED HAS OBTAINED "PREPARE A WORK ZONE TRAFFIC MANAGEMENT PLAN" CERTIFICATION.

CERTIFICATE NO: 0052042754
WAYNE JOHNSON



LEGEND	
	SUBJECT SITE
	WORKS AREA
	B-CLASS HOARDING
	RESIDENT ACCESS
	TEMPORARY KERB RAMP
	BOLLARD
	PEDESTRIAN ROUTE
	INBOUND TRAFFIC
	OUTBOUND TRAFFIC
	SIGNPOST
	SITE PERSONNEL

REV.	DESCRIPTION	DRAWN	CHECK	APP'D	DATE
A	ISSUE FOR DISCUSSION	KM	SB	WJ	07/04/21



PROJECT	PITT STREET STATION
TITLE	16 TRAFFIC CONTROL PLAN DURING WORKS

DWG No.	19433CAD051
DATE STAMP	07 APRIL 2021
PROJECT No.	19433
SCALE	NTS
REV.	A

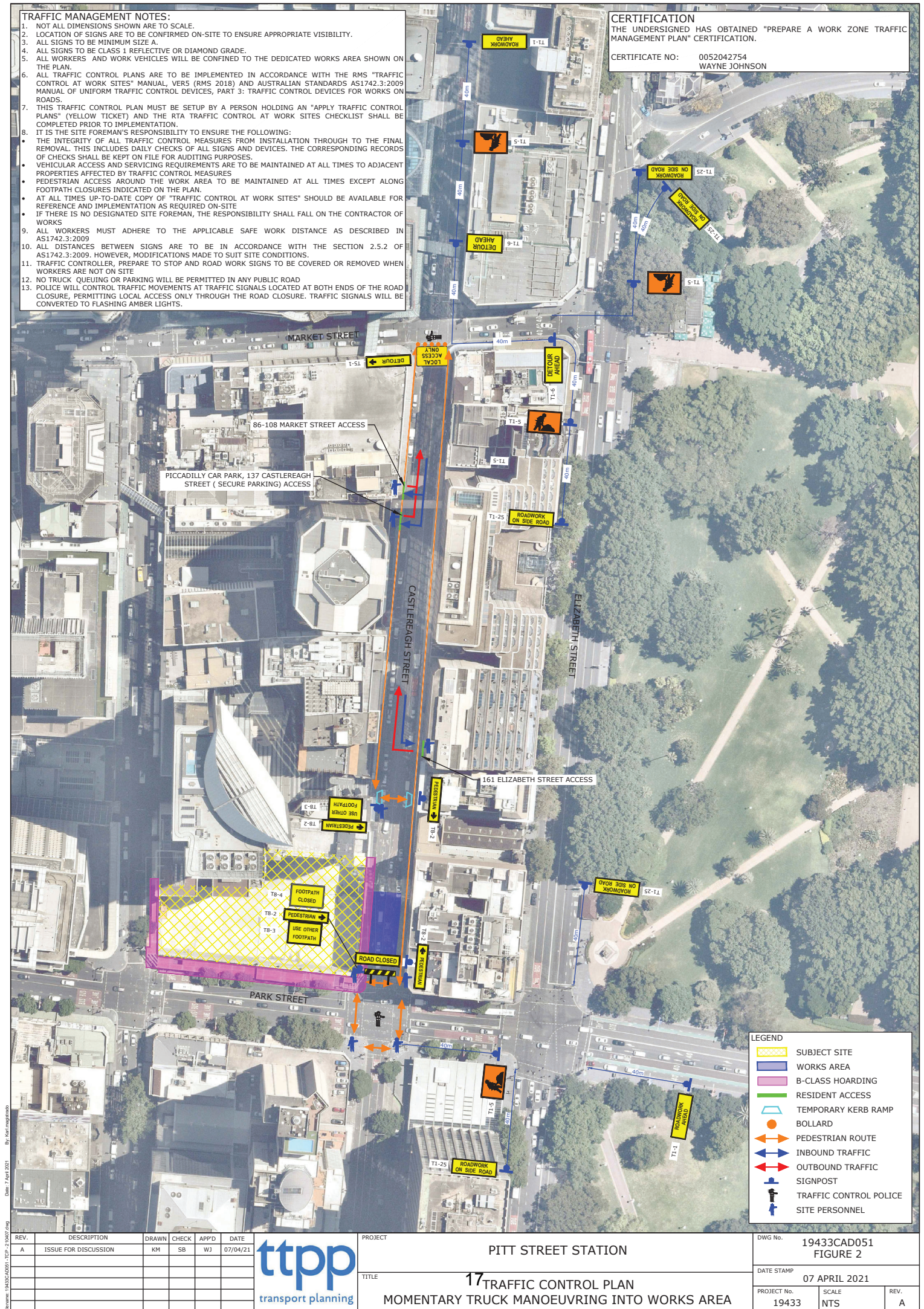
TRAFFIC MANAGEMENT NOTES:

1. NOT ALL DIMENSIONS SHOWN ARE TO SCALE.
2. LOCATION OF SIGNS ARE TO BE CONFIRMED ON-SITE TO ENSURE APPROPRIATE VISIBILITY.
3. ALL SIGNS TO BE MINIMUM SIZE A.
4. ALL SIGNS TO BE CLASS 1 REFLECTIVE OR DIAMOND GRADE.
5. ALL WORKERS AND WORK VEHICLES WILL BE CONFINED TO THE DEDICATED WORKS AREA SHOWN ON THE PLAN.
6. ALL TRAFFIC CONTROL PLANS ARE TO BE IMPLEMENTED IN ACCORDANCE WITH THE RMS "TRAFFIC CONTROL AT WORK SITES" MANUAL, VERS (RMS 2018) AND AUSTRALIAN STANDARDS AS1742.3:2009 MANUAL OF UNIFORM TRAFFIC CONTROL DEVICES, PART 3: TRAFFIC CONTROL DEVICES FOR WORKS ON ROADS.
7. THIS TRAFFIC CONTROL PLAN MUST BE SETUP BY A PERSON HOLDING AN "APPLY TRAFFIC CONTROL PLANS" (YELLOW TICKET) AND THE RTA TRAFFIC CONTROL AT WORK SITES CHECKLIST SHALL BE COMPLETED PRIOR TO IMPLEMENTATION.
8. IT IS THE SITE FOREMAN'S RESPONSIBILITY TO ENSURE THE FOLLOWING:
 - THE INTEGRITY OF ALL TRAFFIC CONTROL MEASURES FROM INSTALLATION THROUGH TO THE FINAL REMOVAL. THIS INCLUDES DAILY CHECKS OF ALL SIGNS AND DEVICES. THE CORRESPONDING RECORDS OF CHECKS SHALL BE KEPT ON FILE FOR AUDITING PURPOSES.
 - VEHICULAR ACCESS AND SERVICING REQUIREMENTS ARE TO BE MAINTAINED AT ALL TIMES TO ADJACENT PROPERTIES AFFECTED BY TRAFFIC CONTROL MEASURES.
 - PEDESTRIAN ACCESS AROUND THE WORK AREA TO BE MAINTAINED AT ALL TIMES EXCEPT ALONG FOOTPATH CLOSURES INDICATED ON THE PLAN.
 - AT ALL TIMES UP-TO-DATE COPY OF "TRAFFIC CONTROL AT WORK SITES" SHOULD BE AVAILABLE FOR REFERENCE AND IMPLEMENTATION AS REQUIRED ON-SITE
 - IF THERE IS NO DESIGNATED SITE FOREMAN, THE RESPONSIBILITY SHALL FALL ON THE CONTRACTOR OF WORKS.
9. ALL WORKERS MUST ADHERE TO THE APPLICABLE SAFE WORK DISTANCE AS DESCRIBED IN AS1742.3:2009
10. ALL DISTANCES BETWEEN SIGNS ARE TO BE IN ACCORDANCE WITH THE SECTION 2.5.2 OF AS1742.3:2009. HOWEVER, MODIFICATIONS MADE TO SUIT SITE CONDITIONS.
11. TRAFFIC CONTROLLER, PREPARE TO STOP AND ROAD WORK SIGNS TO BE COVERED OR REMOVED WHEN WORKERS ARE NOT ON SITE
12. NO TRUCK QUEUING OR PARKING WILL BE PERMITTED IN ANY PUBLIC ROAD
13. POLICE WILL CONTROL TRAFFIC MOVEMENTS AT TRAFFIC SIGNALS LOCATED AT BOTH ENDS OF THE ROAD CLOSURE, PERMITTING LOCAL ACCESS ONLY THROUGH THE ROAD CLOSURE. TRAFFIC SIGNALS WILL BE CONVERTED TO FLASHING AMBER LIGHTS.

CERTIFICATION

THE UNDERSIGNED HAS OBTAINED "PREPARE A WORK ZONE TRAFFIC MANAGEMENT PLAN" CERTIFICATION.

CERTIFICATE NO: 0052042754
WAYNE JOHNSON



LEGEND	
	SUBJECT SITE
	WORKS AREA
	B-CLASS HOARDING
	RESIDENT ACCESS
	TEMPORARY KERB RAMP
	BOLLARD
	PEDESTRIAN ROUTE
	INBOUND TRAFFIC
	OUTBOUND TRAFFIC
	SIGNPOST
	TRAFFIC CONTROL POLICE
	SITE PERSONNEL

REV.	DESCRIPTION	DRAWN	CHECK	APP'D	DATE
A	ISSUE FOR DISCUSSION	KM	SB	WJ	07/04/21



PROJECT	PITT STREET STATION
TITLE	17 TRAFFIC CONTROL PLAN MOMENTARY TRUCK MANOEUVRING INTO WORKS AREA

DWG No.	19433CAD051
FIGURE 2	
DATE STAMP	07 APRIL 2021
PROJECT No.	19433
SCALE	NTS
REV.	A

File name: 19433CAD051_T01 - 210407.dwg Date: 7 April 2021 By: kmr.mcgill