

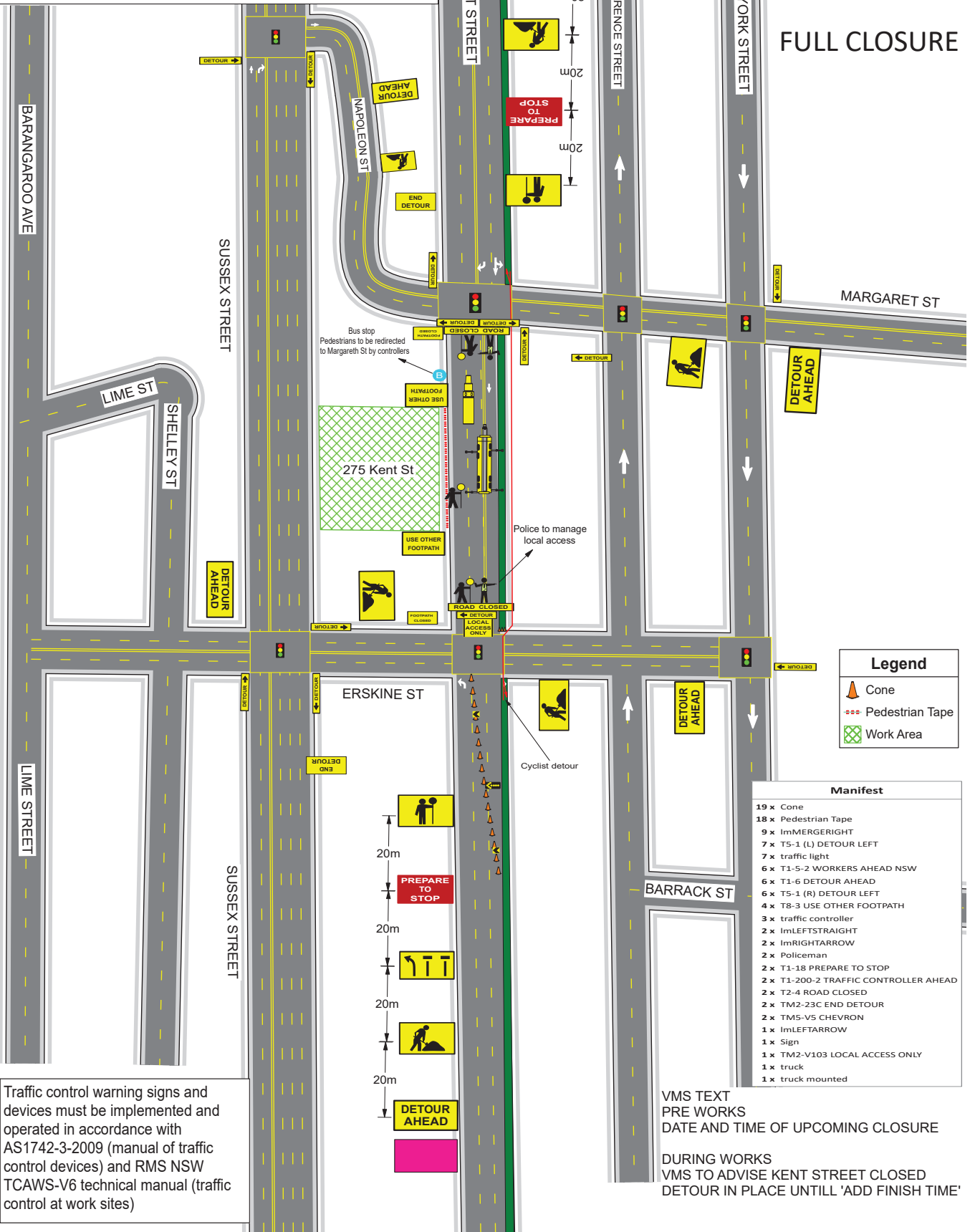
Date: 25/05/21 Author: JESSICA LEMOS - TCT1002557 Project: 275 Kent St Sydney

Comments:

- VMS BOARDS IN PLACE
- ONSITE TRAFFIC CONTROLLERS TO SETUP AS DETOUR
- RESTRICTIONS ON PEDESTRIANS AROUND SETUP AREA
- WHILST WORK IS IN PROGRESS
- PARKING REMOVED THE NIGHT BEFORE WORKS
- PEDESTRIANS TO BE REDIRECTED FROM BUS STOP TO MARGARETH ST UNDER TRAFFIC MANAGEMENT
- CYCLIST TO BE REDIRECTED TO FOOTPATH ALONG WORK ZONE



FULL CLOSURE



Legend

- Cone
- Pedestrian Tape
- Work Area

Manifest

- 19 x Cone
- 18 x Pedestrian Tape
- 9 x ImMERGERIGHT
- 7 x T5-1 (L) DETOUR LEFT
- 7 x traffic light
- 6 x T1-5-2 WORKERS AHEAD NSW
- 6 x T1-6 DETOUR AHEAD
- 6 x T5-1 (R) DETOUR LEFT
- 4 x T8-3 USE OTHER FOOTPATH
- 3 x traffic controller
- 2 x ImLEFTSTRAIGHT
- 2 x ImRIGHTARROW
- 2 x Policeman
- 2 x T1-18 PREPARE TO STOP
- 2 x T1-200-2 TRAFFIC CONTROLLER AHEAD
- 2 x T2-4 ROAD CLOSED
- 2 x TM2-23C END DETOUR
- 2 x TMS-V5 CHEVRON
- 1 x ImLEFTARROW
- 1 x Sign
- 1 x TM2-V103 LOCAL ACCESS ONLY
- 1 x truck
- 1 x truck mounted

Traffic control warning signs and devices must be implemented and operated in accordance with AS1742-3-2009 (manual of traffic control devices) and RMS NSW TCAWS-V6 technical manual (traffic control at work sites)

VMS TEXT
 PRE WORKS
 DATE AND TIME OF UPCOMING CLOSURE

 DURING WORKS
 VMS TO ADVISE KENT STREET CLOSED
 DETOUR IN PLACE UNTILL 'ADD FINISH TIME'