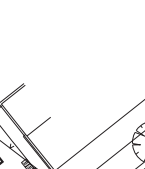


- NOTES**
- See site 1, SCS15 Hatched.
 - See site 1, SCS15 Hatched, placed on posts 3 and 7.
 - Audio tactile push buttons are provided on all posts.
 - Bicycle lanterns on posts 1, 4, and 6 mounted beneath vehicle lanterns at a minimum height of 2.4m above the footpath.
 - Bicycle lanterns 200mm with square visers and no target band.
 - Trees to be regularly inspected and trimmed by Council to maintain lantern visibility.
 - Street lighting to be installed in accordance with City of Sydney guidelines.
 - Key plans to be coordinated in accordance with City of Sydney Technical Specification drawing number 1.1.1.
 - Bicycle Detectors to be installed in accordance with TNSW Drawings VC005-36A and VC005-38A.
 - Civil road works in accordance with AECOM drawing set drawing set 60620833-2C.
 - Automatic introduction of bicycle Phase C (C-Phase) subject to SF 15.
 - Automatic introduction of bicycle Phase B (B-Phase) subject to SF 16.
 - Bus stop relocated to Sydney Park Road.
 - Two additional arrows



SIGNAL GROUP/ PHASE CHART

SIGNAL GROUP	DURING WHICH GREEN DISPLAYED			REMARKS
	A	B	C	
V1	C			Timed protection for P1 & P2 FED. XSF1 disables protection.
V2	C			Timed protection for P1 & P2 FED. XSF1 disables protection.
V3	C			Timed protection for P3 & P4 FED. XSF2 disables protection.
V4	C			Timed protection for P3 & P4 FED. XSF2 disables protection.
V5	X	X		
V6	X	X		
P1	X	X		Automatic introduction subject to the presence of XSF 11 bit.
P2	X	X		Automatic introduction subject to the presence of XSF 12 bit.
P3	X	X		Automatic introduction subject to the presence of XSF 13 bit.
P4	X	X		Automatic introduction subject to the presence of XSF 14 bit.

POSTS

POST	TYPE	LENGTH	OFFSET	REMARKS	MGA CO-ORDINATES	
					EASTING	NORTHING
1	2	4.1	1.0	New	332466.551	6246731.477
2	2	4.1	1.1	Existing	-	-
3	2	4.1	2.0	New	332476.636	6246732.518
4	2	4.1	1.0	Existing	-	-
5	2	4.1	1.0	Existing	-	-
6	2	4.1	1.0	Existing	-	-
7	2	4.1	1.0	Existing	-	-
8	2	4.1	1.0	New	332478.270	6246722.610

DETECTOR SPECIFICATION

Detector	Specifications		
	FN	ALU	AE(I)
A1	SGPS	A	A
A2	DS	-	-
	FN	ALU	AE2)
B1	SGPS	A	A
	DS	-	-
B2	FN	BI(B)	BE(I)
	SGPS	B	B
C1	FN	CU	CE(I)
	SGPS	C	C
Bicycle	FN	CU	CE2)
	SGPS	C	C

DETECTOR SPEC. CONT.

Detector	Specifications		
	FN	AN(P)	BU
P1	SGPS	A	P1(WALK)
	DS	-	B
P2	FN	AN(P)	BU
	DS	-	B
P3	FN	BI(P)	BI(WALK)
	SGPS	B	B
P4	FN	BI(P)	BI(WALK)
	SGPS	B	B

DRAWN BY CADD
DO NOT AMEND MANUALLY

TRANSPORT FOR NSW
SYDNEY COUNCIL AREA
TRAFFIC SIGNALS AT
MITCHELL ROAD, COULSON STREET
AND HUNTLEY STREET
ERSKINEVILLE

DESIGN LAYOUT
TCS No. DS2013/001784
SHEET 8

REG. No. SF2013/169286
SUPERSEDES 5/K

CADD FILE: V:\V016_EA_Design
SCALE: 1:1200
PROPOSED

APPROVED
DESIGNED: CONGRUUM
CHECKED: CUMMO
DATE: 19/11/08

DESIGN APPROVAL
APPROVED
DATE: 19/11/08

DESIGN RECOMMENDATION
ROAD DESIGN ENGINEERING
NAME: ...
DATE: ...

TNSW ACCEPTANCE
ACCEPTED
DATE: ...

REFERENCE PLANS
SYDNEY COUNCIL
DATE: ...

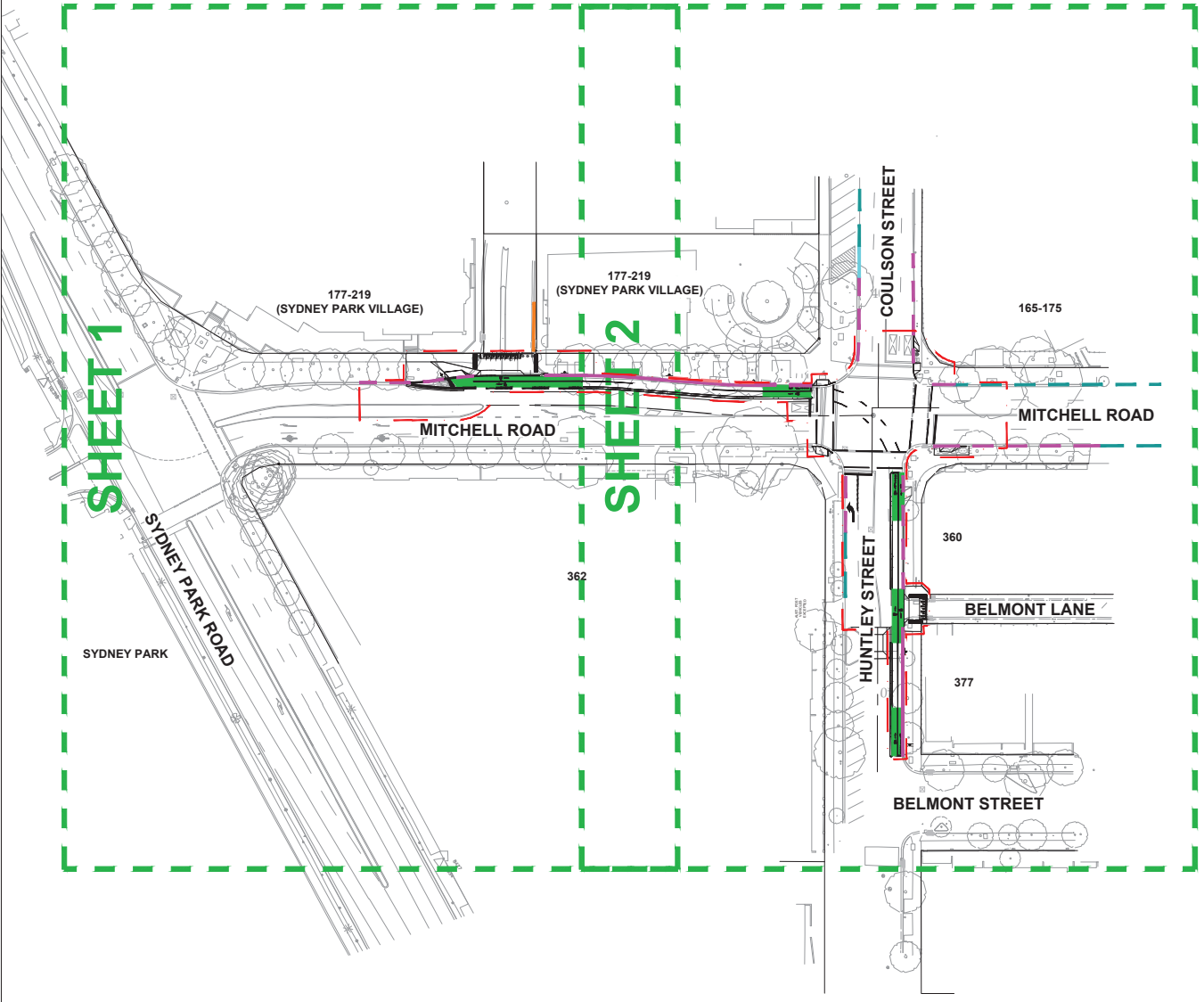
DESIGNED: CONGRUUM
CHECKED: CUMMO
DATE: 19/11/08

DESIGN PREPARED BY
AECOM
DATE: 19/11/08

PROJECT NO. 1000-TC-1001.DGN
A ORIGINAL ISSUE

LEGEND

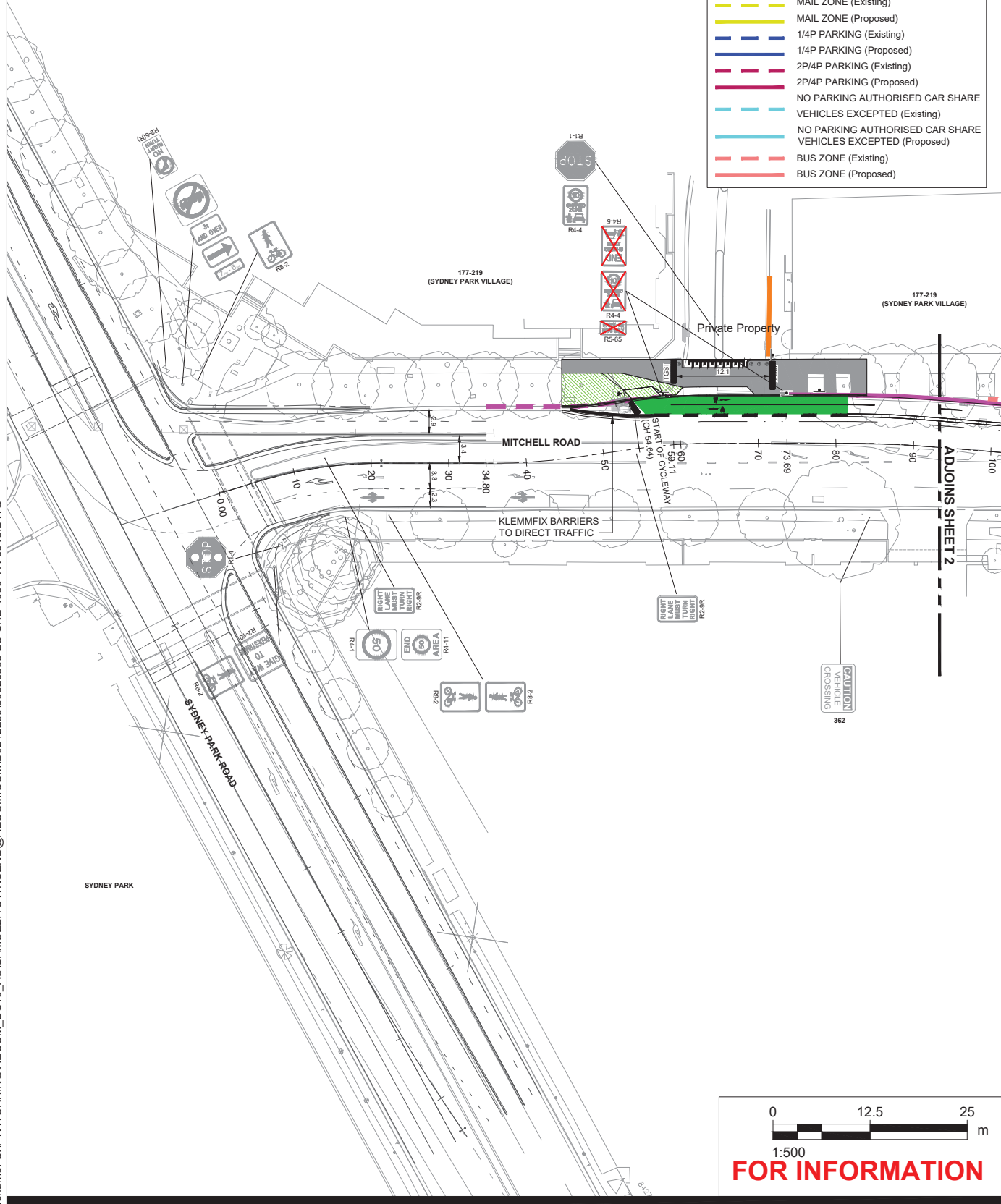
- EXTENT OF WORKS
- SHEET BOUNDARY



0 50 100 m
1:1000
FOR INFORMATION

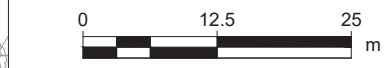
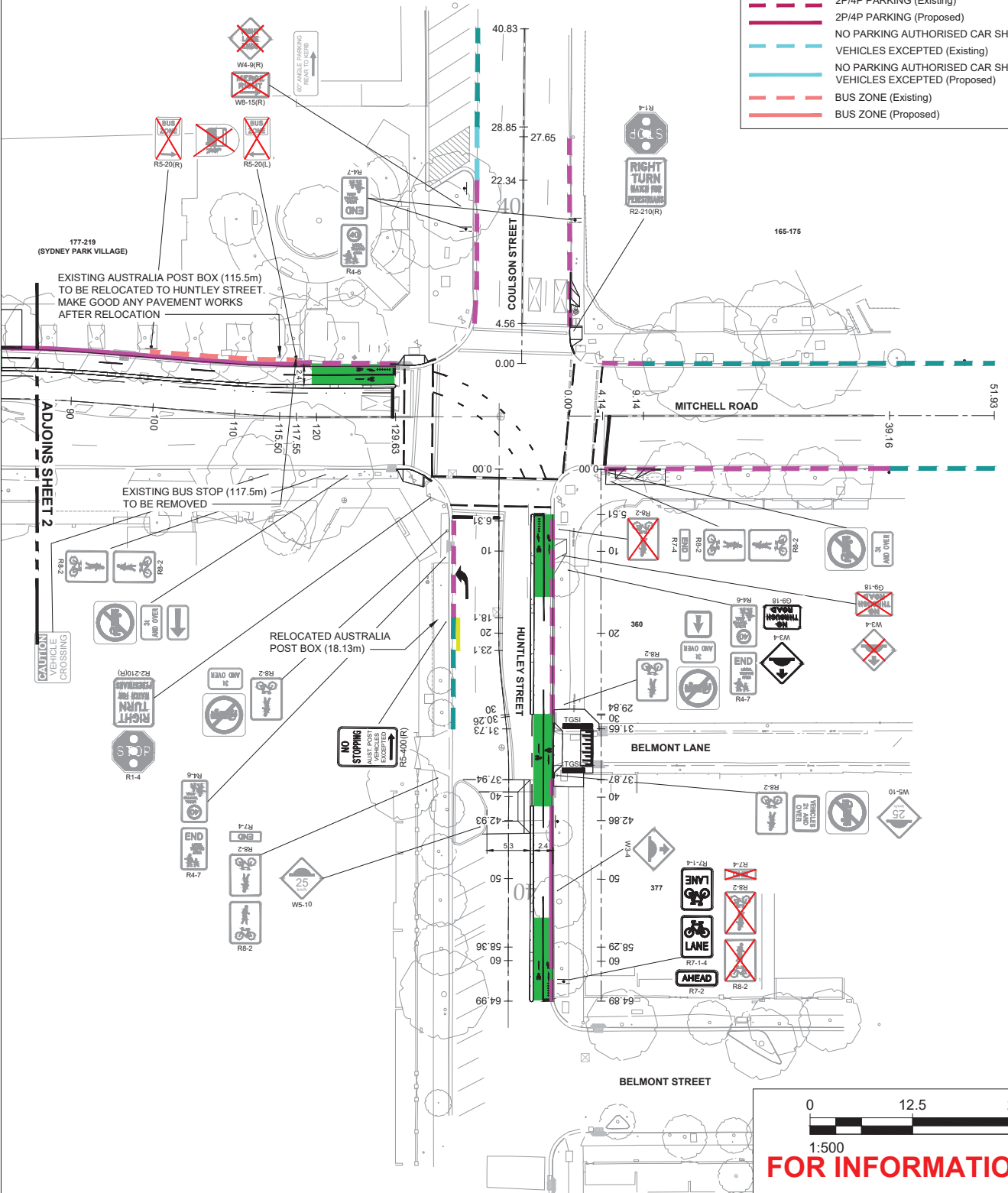


LEGEND	
	SHARED PATH LINEMARKING
	NO STOPPING (Existing)
	NO STOPPING (Proposed)
	NO PARKING (Existing)
	NO PARKING (Proposed)
	UNRESTRICTED PARKING (Existing)
	UNRESTRICTED PARKING (Proposed)
	P5 MINUTE PARKING (Existing)
	P5 MINUTE PARKING (Proposed)
	MAIL ZONE (Existing)
	MAIL ZONE (Proposed)
	1/4P PARKING (Existing)
	1/4P PARKING (Proposed)
	2P/4P PARKING (Existing)
	2P/4P PARKING (Proposed)
	NO PARKING AUTHORISED CAR SHARE VEHICLES EXCEPTED (Existing)
	NO PARKING AUTHORISED CAR SHARE VEHICLES EXCEPTED (Proposed)
	BUS ZONE (Existing)
	BUS ZONE (Proposed)





LEGEND	
	SHARED PATH LINEMARKING
	NO STOPPING (Existing)
	NO STOPPING (Proposed)
	NO PARKING (Existing)
	NO PARKING (Proposed)
	UNRESTRICTED PARKING (Existing)
	UNRESTRICTED PARKING (Proposed)
	P5 MINUTE PARKING (Existing)
	P5 MINUTE PARKING (Proposed)
	MAIL ZONE (Existing)
	MAIL ZONE (Proposed)
	1/4P PARKING (Existing)
	1/4P PARKING (Proposed)
	2P/4P PARKING (Existing)
	2P/4P PARKING (Proposed)
	NO PARKING AUTHORISED CAR SHARE VEHICLES EXCEPTED (Existing)
	NO PARKING AUTHORISED CAR SHARE VEHICLES EXCEPTED (Proposed)
	BUS ZONE (Existing)
	BUS ZONE (Proposed)



1:500
FOR INFORMATION