

Attachment D

Perspectives



3D VIEW
Darlinghurst Collection

04 Design Principles



3D VIEW: GROUP 2 FROM OXFORD STREET
Darlinghurst Collection



3D VIEW, OXFORD STREET AERIAL

Darlinghurst Collection

fjmt studio



3D VIEW, GROUP 1 FROM WEST, OXFORD STREET

Darlinghurst Collection



3D VIEW, GROUP 3 FROM WEST, OXFORD STREET

fjmt studio

Appendix A Visual Impact





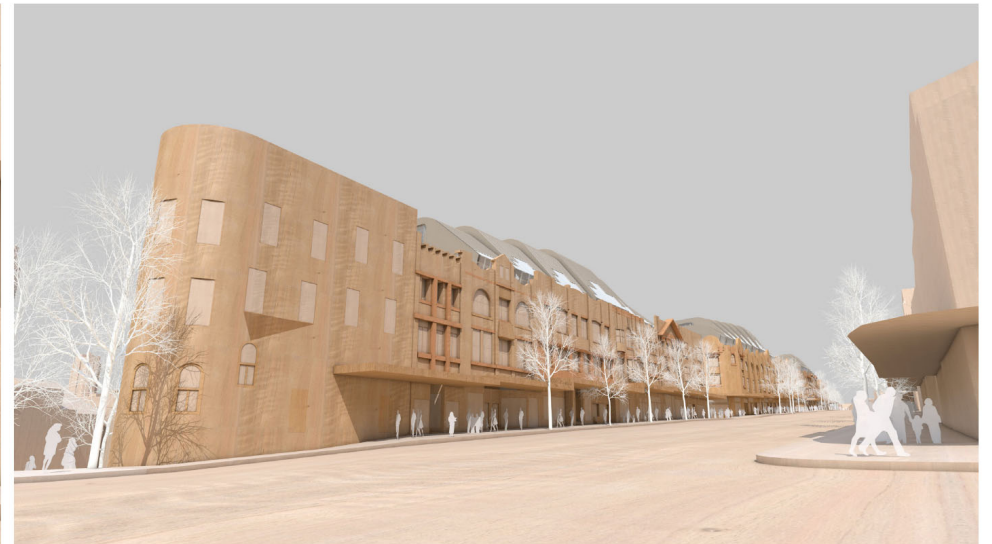
VIEW 1 - EXISTING | GROUP 1, FROM OXFORD STREET



VIEW 2 - EXISTING | GROUP 1, FROM OXFORD STREET



VIEW 1 - PROPOSED | GROUP 1, FROM OXFORD STREET
Darlinghurst Collection



VIEW 2 - PROPOSED | GROUP 1, FROM OXFORD STREET



VIEW 3 - EXISTING | GROUP 1, FROM OXFORD STREET



VIEW 4 - EXISTING | GROUP 1&2, FROM OXFORD STREET



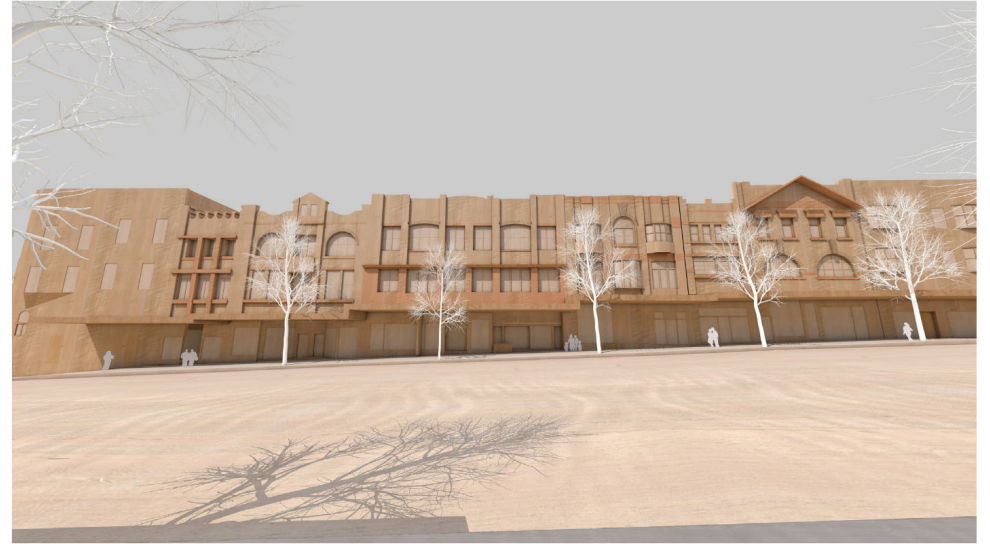
VIEW 3 - PROPOSED | GROUP 1, FROM OXFORD STREET
Darlinghurst Collection



VIEW 4 - PROPOSED | GROUP 1&2, FROM OXFORD STREET



VIEW 5 - EXISTING | GROUP 1, FROM OXFORD STREET



VIEW 6 - EXISTING | GROUP 1, FROM OXFORD STREET



VIEW 5 - PROPOSED | GROUP 1, FROM OXFORD STREET
Darlinghurst Collection



VIEW 6 - PROPOSED | GROUP 1, FROM OXFORD STREET



VIEW 7 - EXISTING | GROUP 1, FROM OXFORD STREET



VIEW 8 - EXISTING | GROUP 2, FROM PALMER STREET



VIEW 7 - PROPOSED | GROUP 1, FROM OXFORD STREET
Darlinghurst Collection



VIEW 8 - PROPOSED | GROUP 2, FROM PALMER STREET



VIEW 9 - EXISTING | GROUP 2, FROM OXFORD STREET



VIEW 10 - EXISTING | GROUP 2, FROM OXFORD STREET



VIEW 9 - PROPOSED | GROUP 2, FROM OXFORD STREET
Darlinghurst Collection



VIEW 10 - PROPOSED | GROUP 2, FROM OXFORD STREET



VIEW 11 - EXISTING | GROUP 3, FROM OXFORD STREET



VIEW 12 - EXISTING | GROUP 3, FROM OXFORD STREET



VIEW 11 - PROPOSED | GROUP 3, FROM OXFORD STREET
Darlinghurst Collection



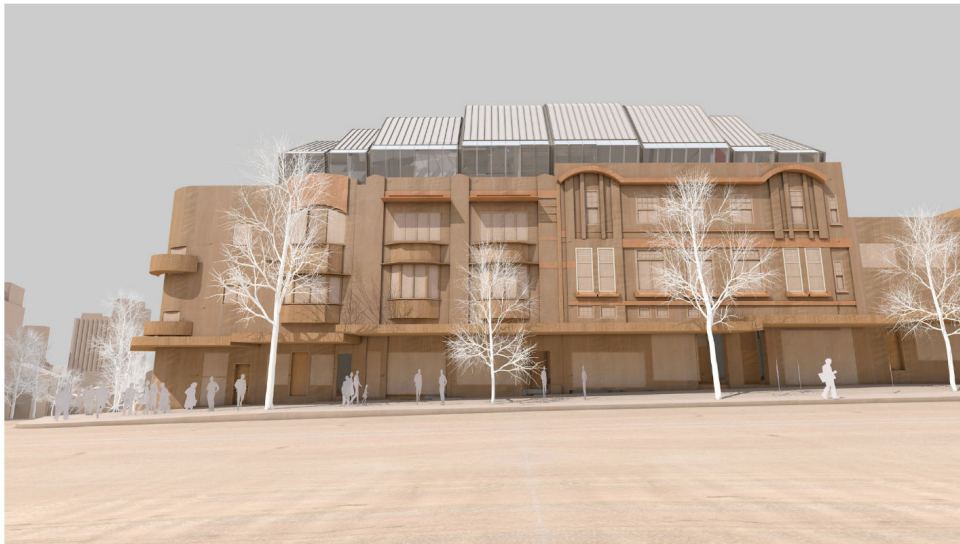
VIEW 12 - PROPOSED | GROUP 3, FROM OXFORD STREET



VIEW 13 - EXISTING | GROUP 3, FROM OXFORD STREET



VIEW 14 - EXISTING | GROUP 3, FROM OXFORD STREET



VIEW 13 - PROPOSED | GROUP 3, FROM OXFORD STREET
Darlinghurst Collection



VIEW 14 - PROPOSED | GROUP 3, FROM OXFORD STREET



VIEW 15 - EXISTING | ALL GROUPS, FROM TAYLOR SQUARE



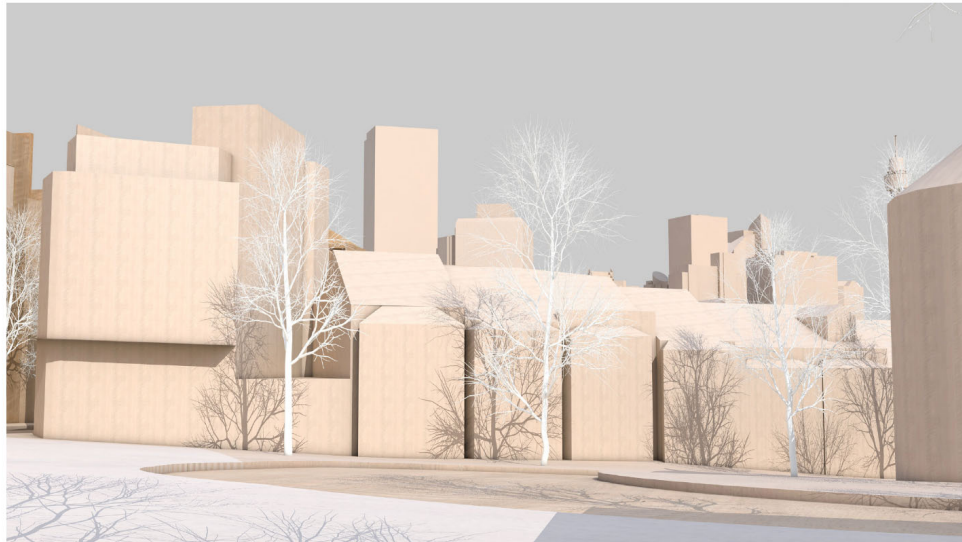
VIEW 16 - EXISTING | TOWARDS GROUP 3, FROM CNR FORBES & OXFORD STREET



VIEW 15 - PROPOSED | ALL GROUPS, FROM TAYLOR SQUARE
Darlinghurst Collection



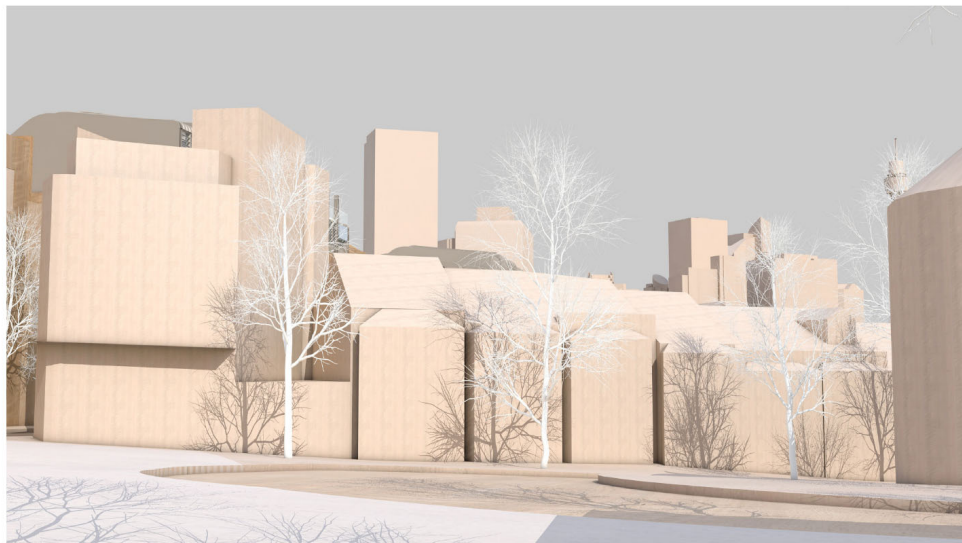
VIEW 16 - PROPOSED | TOWARDS GROUP 3, FROM CNR FORBES & OXFORD STREET



VIEW 17 - EXISTING | TOWARDS REAR OF GROUP 2&2, FROM FORBES STREET



VIEW 18 - EXISTING | GROUP 3, FROM PALMER STREET



VIEW 17 - PROPOSED | TOWARDS REAR OF GROUP 2&2, FROM FORBES STREET
Darlinghurst Collection



VIEW 18 - PROPOSED | GROUP 3, FROM PALMER STREET



VIEW 19 - EXISTING | GROUP 2, FROM CROWN STREET



VIEW 20 - EXISTING | GROUP 1, FROM BURTON STREET ALONG FOLEY STREET



VIEW 19 - PROPOSED | GROUP 2, FROM CROWN STREET
Darlinghurst Collection



VIEW 20 - PROPOSED | GROUP 1, FROM BURTON STREET ALONG FOLEY STREET



VIEW 21 - EXISTING | View of Group 1 from the corner of Kells Lane and Crown Street



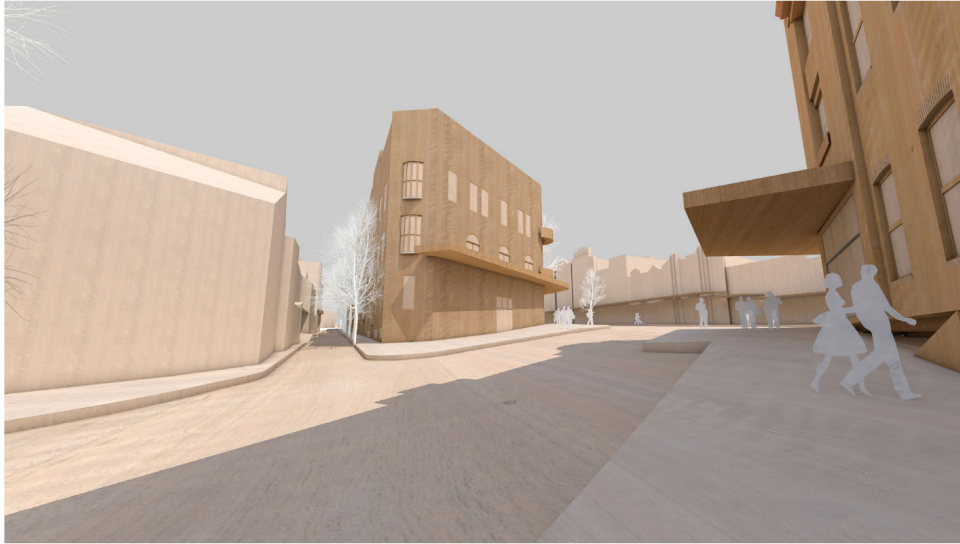
VIEW 22 - EXISTING | View of Group 2 from the eastern side of Palmer Street, just south of Foley Street



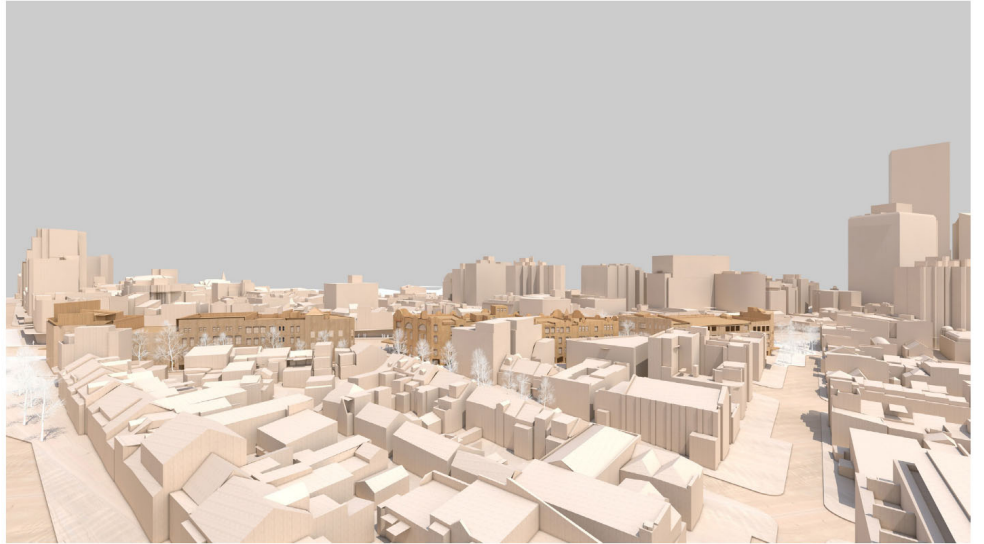
VIEW 21 - PROPOSED | View of Group 1 from the corner of Kells Lane and Crown Street
Darlinghurst Collection



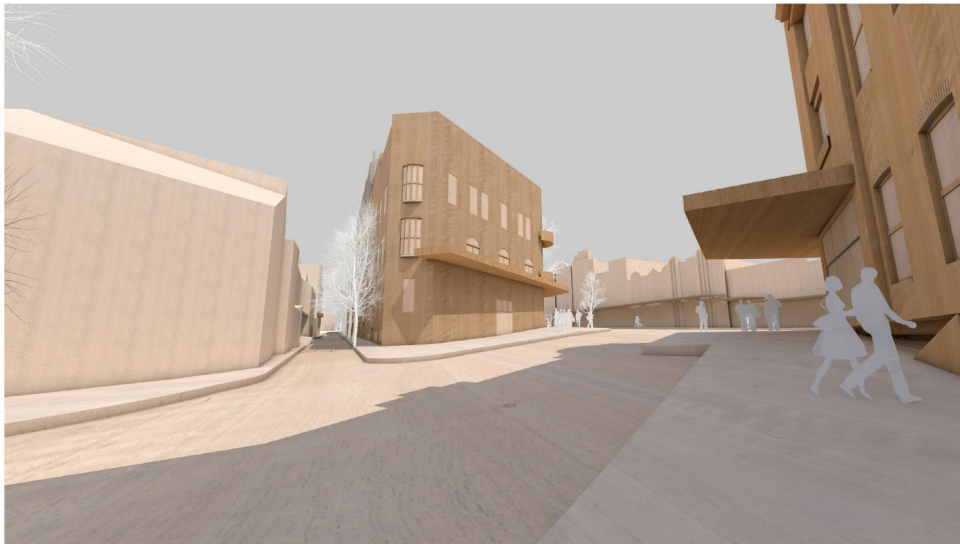
VIEW 22 - PROPOSED | View of Group 2 from the eastern side of Palmer Street, just south of Foley Street



VIEW 23 - EXISTING | View of Group 3 from the western side of Palmer Street, just south of Foley Street



VIEW 24 - EXISTING | aerial/3D views of all 3 groups from the north, from the approximate location of 46- 50 Burton Street



VIEW 23 - PROPOSED | View of Group 3 from the western side of Palmer Street, just south of Foley Street
Darlinghurst Collection



VIEW 24 - PROPOSED | aerial/3D views of all 3 groups from the north, from the approximate location of 46- 50 Burton Street