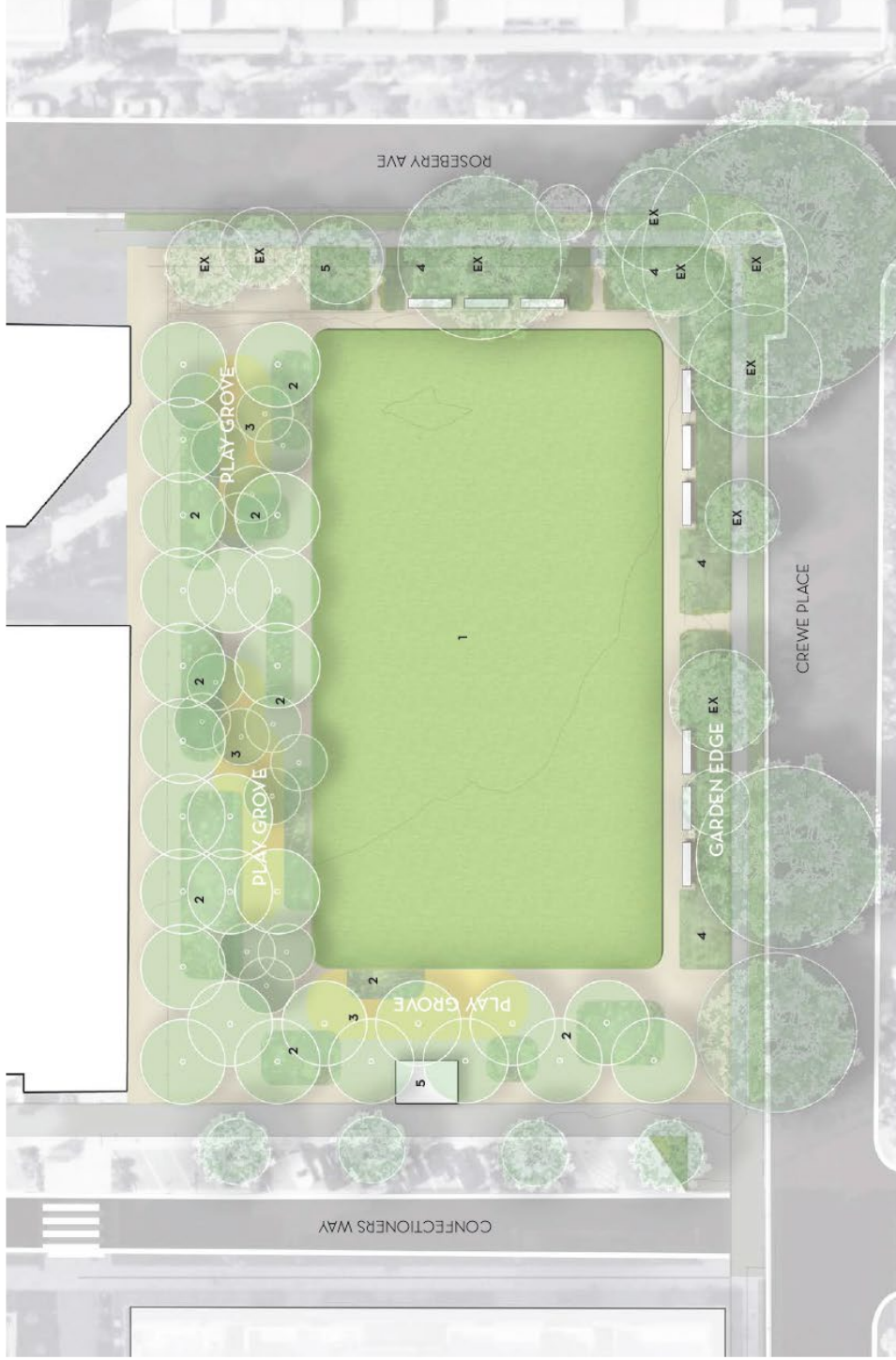


Attachment B

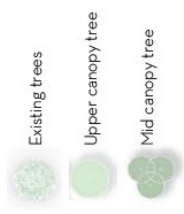
Developed Concept Plan (Gallagher Studios)



KEY

- 1: THE LAWN**
 - An open space for informal play, picnicking and gathering.
 - The orientation maximizes winter sun.
- 2: THE TERRACES WITH 'DUNE' GARDENS**
 - A semi permeable space planted with shade trees overlooking the lawn.
 - Incorporates seating, play zones and low native gardens
 - The tree grove provides dappled shade and acts as a green screen framing the park.
- 3: PLAY GROVES**
 - A range of play spaces with facilities for children of varying ages.
 - Incorporating themes of nesting, nature play and discovery.
 - Incorporating climbing elements and natural materials.
- 4: THE GARDEN EDGE**
 - A garden space with seating located on the eastern and southern park edge providing a low buffer to the street.
 - A mix of native planting to provide habitat for native birds.

5: AMENITIES BUILDING

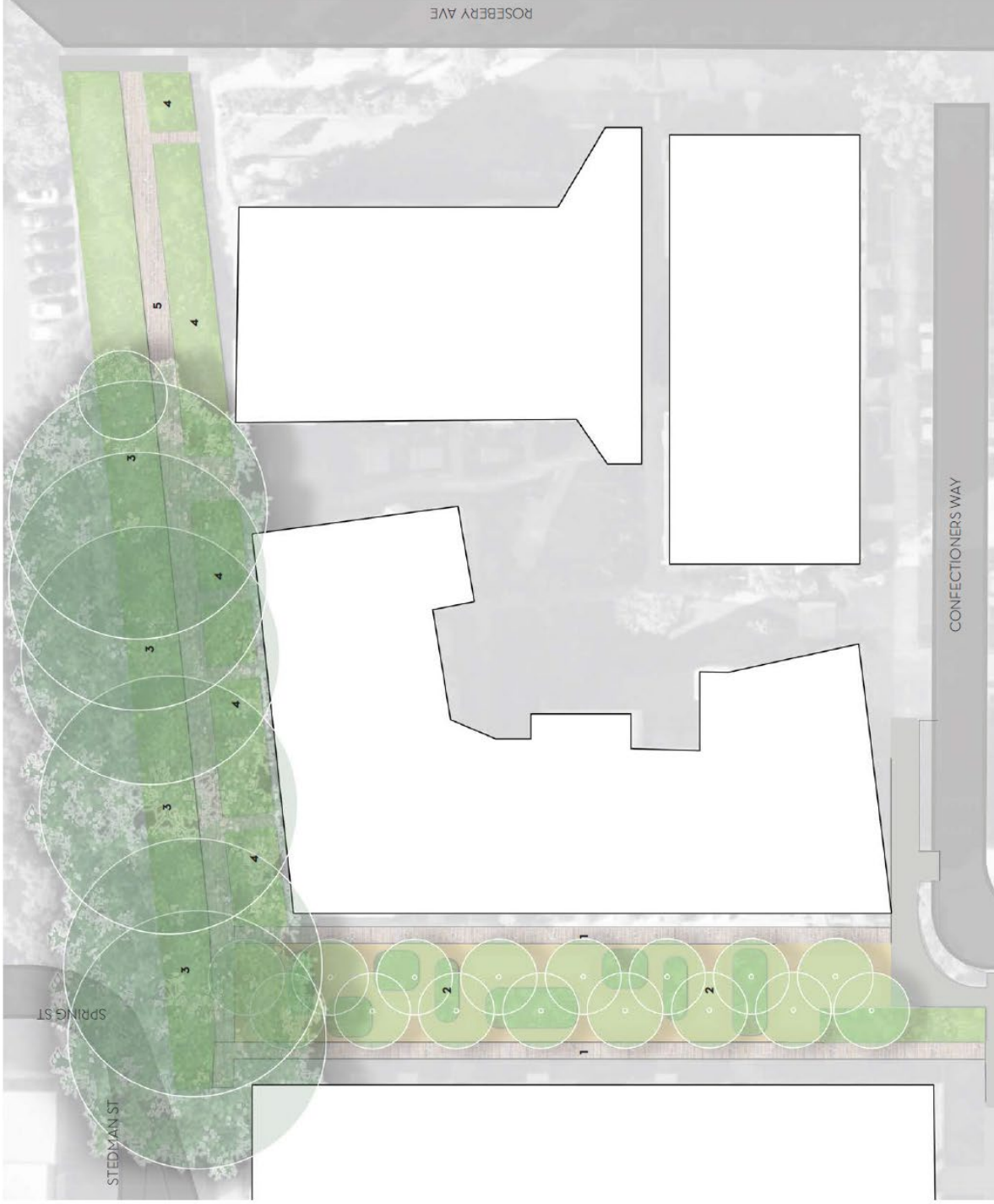


PRECEDENTS



1. Informal mid canopy tree planting on the terraces 2. Tree planting to provide filter shade 3. Endemic planting : Eastern Suburbs Banksia Scrub 4. Opportunities for tree planting to allow for opportunities for nature play 5 & 6. Play elements reflecting theme of nesting 7 & 8 Opportunities for climbing 9. Comfortable seating in shade. 10. Mixed native planting.





KEY

1. Paths to both side of corridor along apartment boundary, connecting north-south.
2. Staggered tree planting interspersed with pockets of planting and seating. Compacted gravel or similar material that will allow for informal access throughout corridor.
3. Existing stand of Fig trees protected and retained with shade understorey planting and seating.
4. Planting along apartment edge with pedestrian access where required.
5. Generous central path connecting east-west from Rosebery Ave to Steadman St.



1. Example of low planting and shade trees with seating.
2. Mixed planting and seating areas.
3. Shade tolerant planting under figs.



PRELIMINARY THEMES

