

# **Attachment B**

## **Town Hall Precinct Public Domain Plan**



# Town Hall Precinct

CITY OF SYDNEY 

Public Domain Plan





The City acknowledges the Gadigal of the Eora Nation as the Traditional Custodians of this place we now call Sydney, and we acknowledge their continued connection to Country. We pay respect to Aboriginal and Torres Strait Islander Elders past, present and emerging.

## Executive Summary

The Town Hall Precinct is at Sydney's civic and retail heart. It is an area undergoing significant change, with significant public and private investment driving growth. The completion of light rail on George Street and the 2024 delivery of new Metro stations will intensify the interchange role of streets, and bring thousands of additional people to the precinct daily. The streets and public spaces of the Town Hall Precinct have a critical role to play in providing space for movement and daily life for this growing population, as well as supporting the safe operation of businesses recovering from the pandemic.

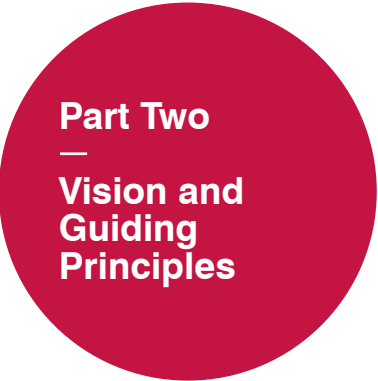
The Town Hall Precinct Public Domain Plan will respond to these issues and deliver on the Sustainable Sydney 2030 vision. By establishing a long term vision for streets and spaces it provides a framework for for advocacy, stakeholder engagement and community consultation, as well as guiding public and private development projects.





Part One  
—  
Introduction

Study area	8
City Centre Public Domain Planning	10
Objectives	12
Consultation	14



Part Two  
—  
Vision and Guiding Principles

Sustainable Sydney 2030	18
Public Spaces Public Life 2020	20



Part Three  
—  
Project context

Planning for growth in Central Sydney	24
Supporting economic and cultural activities	26
Public Art	28
Designing with Country	29
Transport and cycling	30
Key challenges and approach	32
Strategic context	36



Part Four  
—  
Public domain opportunities

Opportunities	40
<b>Public spaces</b>	42
Town Hall Square	44
Sydney Square	48
<b>Streets</b>	50
Park/Druitt Street	50
Pitt Street	58
Bathurst Street	66
Market Street	70
Castlereagh Street	74
Elizabeth Street	78
King Street	82
Tactical, temporary and short term opportunities	86



Part Five  
—  
Project priorities and gains

Project priorities	90
Public domain gains	92



Part Six  
—  
Appendices

A	Town Hall Precinct Public Domain Plan Streetscapes Study (HASSELL)
B	Town Hall Precinct urban design study (Gehl Architects)

prepared by

CITY DESIGN  
City of Sydney



# Part One

---

## Introduction

*city of villages*





# Study Area

The Town Hall precinct is bounded by Liverpool Street to the south, Harbour Street and the Western Distributor to the west to Druiett Street, George Street to King Street in the north, and Elizabeth Street to the east. The precinct encompasses the civic and retail heart of Central Sydney. The public domain in this area is heavily used by workers, visitors and residents of the area, visiting and moving through the precinct each day.



**Left**  
Town Hall Precinct study area

**Right**  
Aerial view looking west over the study area



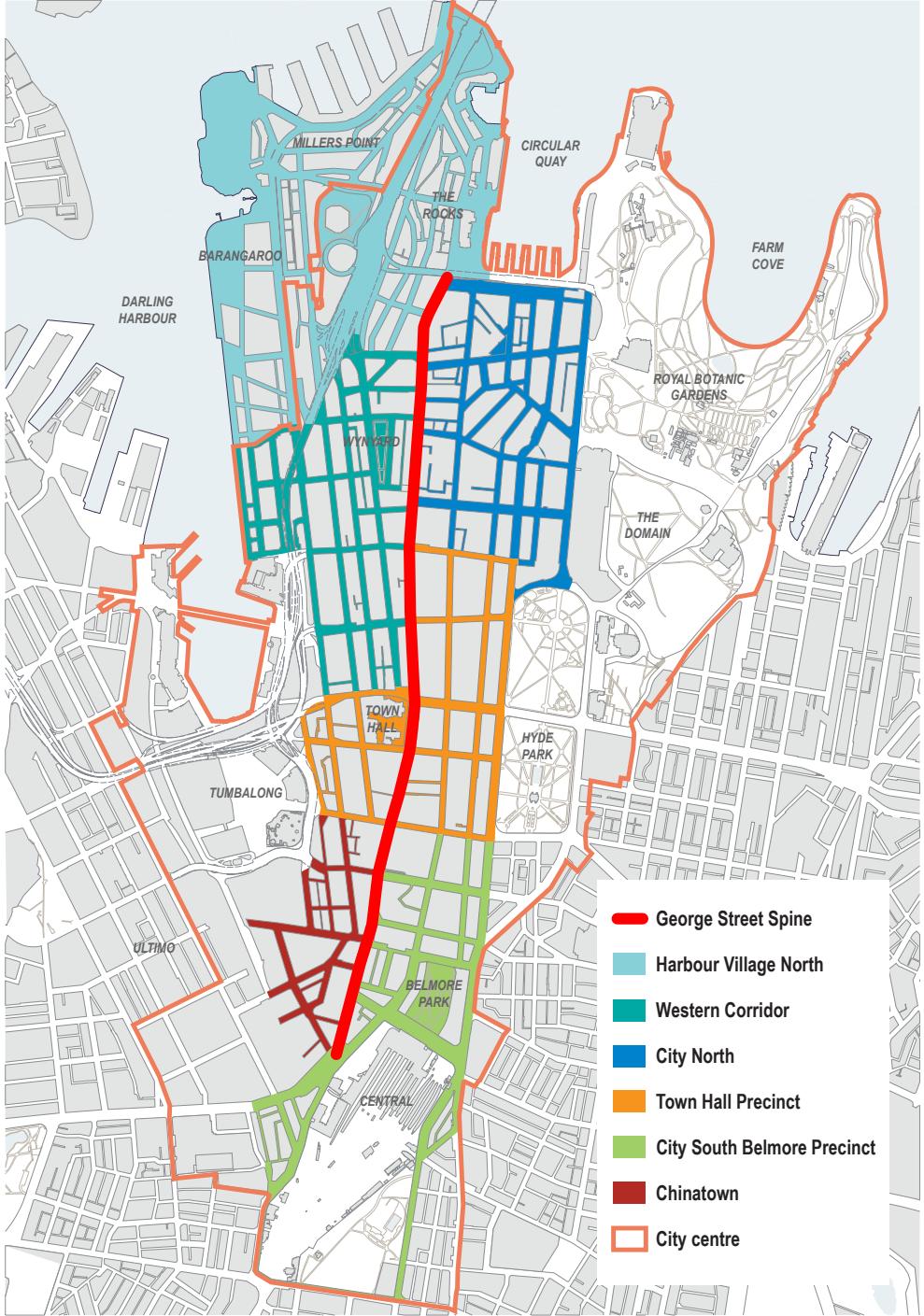


# City Centre Public Domain Planning

The City Centre Public Domain Plan has been divided into key precincts for which detailed feasibility and public domain improvement proposals are being developed. To date, the City has undertaken public domain plans for Chinatown, Harbour Village North, George Street and City North. The Town Hall Precinct Public Domain Plan is the next in a series of detailed plans that analyse and recommend the scope, location and extent of public domain improvements over the short, medium and long term, contributing to the overall city transformation.

This plan should be read in conjunction with the adjacent completed plans - City South Public Domain Plan, and Chinatown and City North Public Domain Plans.

City Centre Public Domain Plan - Precincts

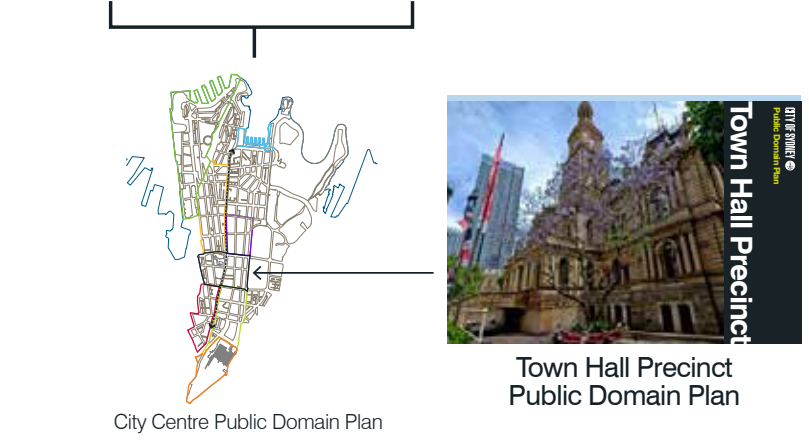


Town Hall Precinct Public Domain Plan

STRATEGIC DIRECTIONS



PUBLIC DOMAIN PLANS



PROJECTS

- Overlay Projects

  - Pedestrian Improvements
  - Lighting
  - Footpath Materials
  - Street Furniture
  - Public Art
  - Greening Sydney
  - Wayfinding Pedestrian System
  - Environmental Sustainability
- Place Specific Projects

  - Public Space Improvement Program
  - Laneways Improvement Program
  - Cycleway Implementation Program
  - Urban Renewal

Diagram: Town Hall Precinct Public Domain Plan inputs and outputs



# Objectives

The Town Hall Precinct Public Domain Plan will inform major infrastructure, transport and private development projects so that the recommended improvements can be taken into consideration in future consultation and liaison with Transport for NSW, planning negotiations and project delivery. It is an important advocacy tool in shaping government and private investment, and will also guide the City’s long term planning and capital works programming.

This strategic work will allow Council to:

- respond to the increasing pedestrian numbers in the precinct putting pressure on existing narrow footpaths
- plan for the completion of Sydney Metro stations in the precinct which will increase the concentration of people accessing stations and using the public domain to interchange between modes
- provide a framework to prioritise the implementation of precinct-wide overlays (granite paving, street furniture) to improve public domain quality within the precinct
- consider new potentials for managing traffic and parking on city streets with the completion of CBD and South East Light Rail and associated review of CBD bus routes

- rethink the role of streets with regard to climate change, and incorporate additional tree canopy and greening
- deliver on Sustainable Sydney 2030 aspirations and project ideas within the precinct, and work towards a vision for 2050
- respond to COVID-19 by providing additional space for people to safely access and use businesses, work and public space
- provide a plan that can be used for advocacy, stakeholder engagment and community consultation

Photo: Public furniture in George Street near Town Hall





# Consultation

The Town Hall Precinct forms the retail and civic core of Central Sydney. Changes to the public domain will impact business, government and community members who use these areas. An initial consultation program has occurred to inform this plan, however additional consultation will take place as opportunities and projects are progressed.

It will be necessary for the City to partner with other organisations, including developers and government, to implement the Public Domain Plan. Engagement provides an opportunity to build these relationships for collaboration and advocacy in the future.

The engagement and consultation program for the Town Hall Precinct Public Domain Plan has included user intercept surveys conducted throughout the study area, and targeted meetings with specific stakeholders. This Plan has also drawn on the extensive engagement program undertaken for Sustainable Sydney 2050.

It is proposed to consult further on the recommendations and opportunities proposed by this Public Domain Plan, to allow broad community and stakeholder review and comment prior to its finalisation and adoption.

## User intercept surveys

Intercept surveys have been carried out at key sites within the study area - both on streets and in Sydney Square. Feedback relating to specific places has been captured in the detailed project opportunities section of this Plan. The key themes emerging through the intercept surveys are captured below.



## Sustainable Sydney 2050 Consultation

This Plan has drawn on the extensive engagement program undertaken for Sustainable Sydney 2050.

Since November 2018 the City has been consulting the community on their vision for Sydney in 2050. This has included conducting surveys, community sessions, pop-up events, targeted stakeholder workshops, consultation with children and young people, and a citizens jury have. The key themes identified through this process have informed the Town Hall Precinct Public Domain Plan work:

- A city for people.**
- A city that moves.**
- An environmentally responsive city.**
- A lively, cultural and creative city.**
- A city with a future focused economy.**

## top Citizens Jury

In August 2019 the City partnered with new Democracy to coordinate a citizens jury of 43 randomly selected and demographically matched community members. One of the key 2050 concepts recommended by the citizens jury is *moving efficiently and sustainably*.

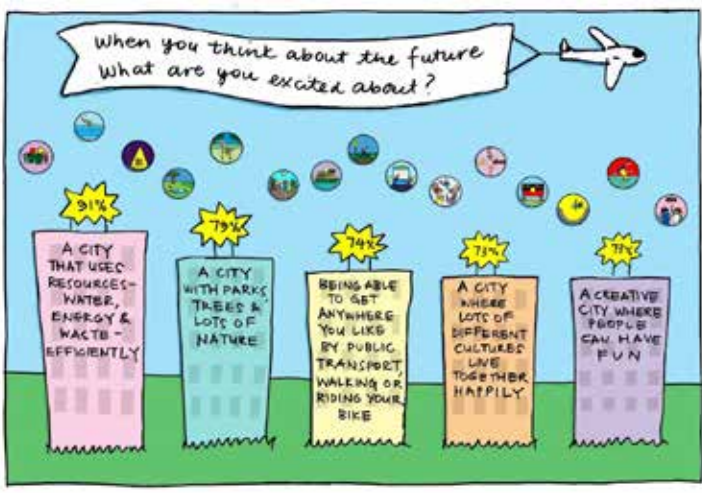
“We want a city designed for people and not vehicles, active 24/7, where there is space to walk, bike, stroll, jog, chat, rest, relax and enjoy life.”

## bottom right Sydney 2050 High School Summit

Primary and high school students participated in workshops to discuss issues affecting the city and its future. From April to June 2019, the council ran 20 workshops with 19 schools in the City of Sydney local area and with the data collected during these sessions, prepared the consultation report Our future Sydney. Each summit culminated in students presenting recommendations for action to our local government leaders.

## bottom left Our Future Childrens Summit

Key 2050 issues identified by primary school aged children





# Part Two

## Vision and Guiding Principles

*city of villages*





# Sustainable Sydney 2030

## Working towards Sydney 2030 strategic directions

Sustainable Sydney 2030 is the vision document that guides the City’s efforts to improve the way communities live, work and play. It’s a vision that sets out to make the city as green, global and connected as possible by 2030. The plan is the result of extensive consultation with residents, visitors, workers and businesses. Feedback from the consultation revealed that people wanted a city that cares about the environment, has a strong economy, supports the arts and that connects its people to each other and the rest of the world.

Sustainable Sydney 2030 established a clear vision for the public domain, of three public squares connected by the George Street Spine. This Town Hall Precinct Public Domain Plan reinforces that urban structure. It outlines ideas for improving City streets and open spaces which can be used as guidelines for future development. It forms part of the overall City Centre Public Domain Plan, and delivers on the City’s 2030 Vision. It provides principles around the delivery of a key 2030 Project Idea - the new Town Hall Square.

Using a precinct based approach, the Public Domain Plan delivers on Sustainable Sydney 2030 as follows:

## Ten strategic directions for Sustainable Sydney

1

A globally competitive and innovative city

✓

2

A leading environmental performer

✓

3

Integrated transport for a connected city

✓

4

A city for walking and cycling

✓

5

A lively and engaging city centre

✓

6

Resilient and inclusive local communities

✓

7

A cultural and creative city

✓

8

Housing for a diverse community

9

Sustainable development, renewal and design

✓

10

Implementation through effective governance and partnerships

✓

**Direction 1 - A Globally Competitive and Innovative City:** the Plan promotes a public domain quality agenda that supports the city centre that is competitive, attracts investment, and ensures ongoing liveability.

**Direction 2 - A Leading Environmental Performer:** the Plan supports the City’s environmental actions in particular increasing space available for tree canopy.

**Direction 3 - Integrated Transport for a Connected City:** the Plan supports efficient public transport and facilitates the transfer of modes through better public domain outcomes.

**Direction 4 - A City for Walking and Cycling:** the Plan promotes a rethink of street space allocation to promote better conditions for walking and cycling.

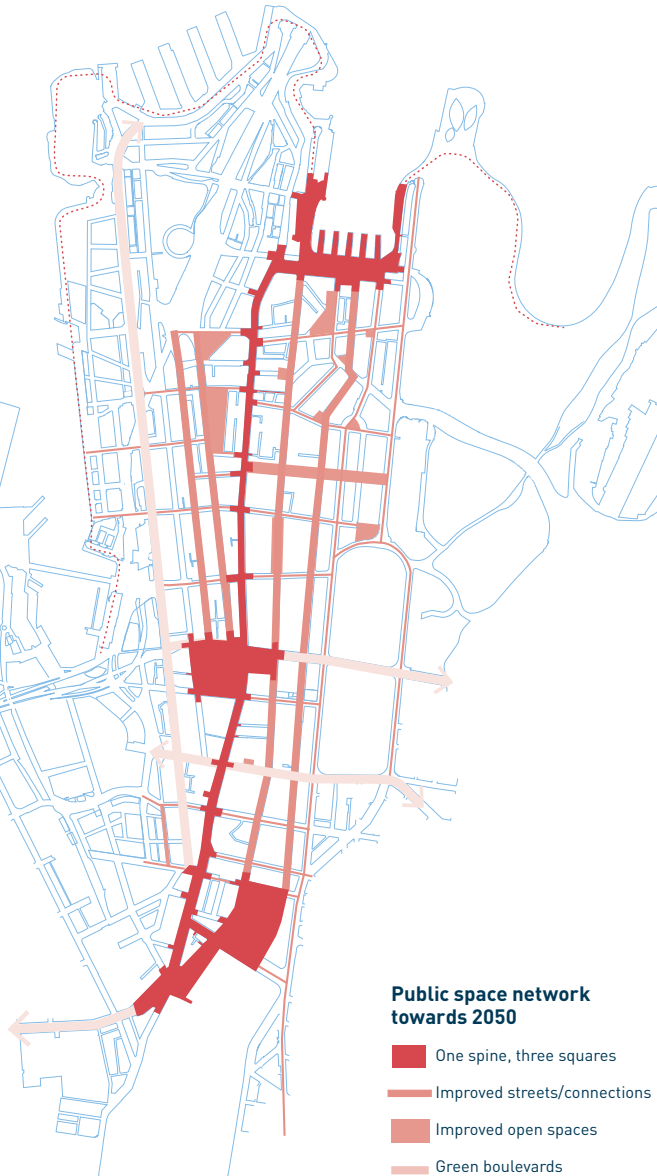
**Direction 5 - A Lively and Engaging City Centre:** the Plan advocates for a welcoming public domain that encourages people to stay and enjoy as well as measures that support a diverse 24 hr city economy.

**Direction 6 - Resilient and inclusive local communities:** the Plan considers the diversity of users of the precinct and will consult with them to ensure that the public domain and open spaces are inclusive.

**Direction 7 - A Cultural and Creative City:** the Plan promotes the importance of a diverse cultural offer and public art for city identity and encourage people to come to the city for leisure beyond work and business activities.

**Direction 9 - Sustainable Development, Renewal and Design:** the Plan advocates built development and public domain to be exemplars of sustainability.

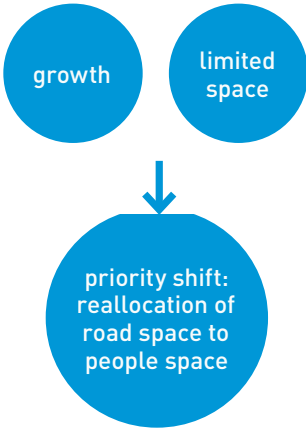
**Direction 10 - Implementation through Effective Governance and Partnerships:** State government and the private sector collaboration will be needed to implement the Plan’s recommendations as most require a rethink of road space allocation and traffic management managed by State agencies.



The public space network - three squares connected by the George Street spine - was established in Sustainable Sydney 2030 and underpins work towards a 2050 vision

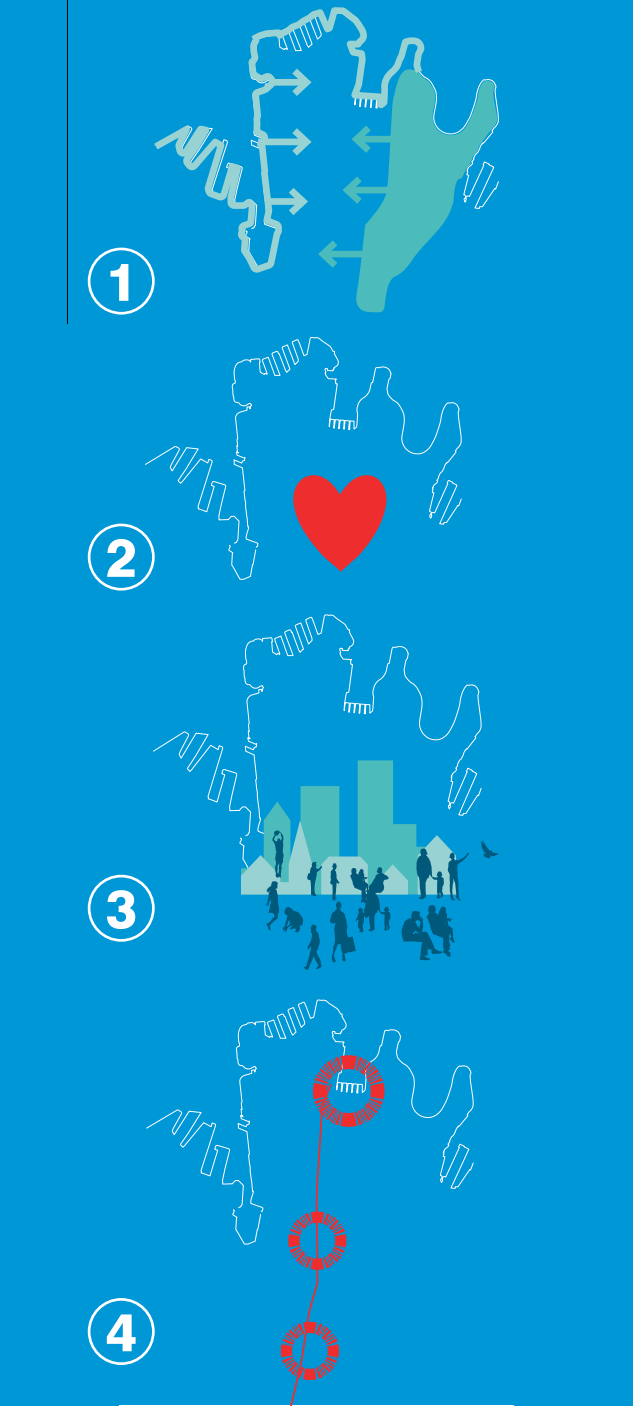
## Public Spaces Public Life 2020

The Public Space Public Life Study 2020 by Gehl Architects, in collaboration with the City, is a review and benchmark assessment against the previous Public Space Public Life Study with was conducted in 2007. To improve health and wellbeing, making more space for walking, cycling and greening, the city must continue to increase the quantity and quality of well-planned public domain – streets and spaces that are human in scale, sustainable, social, healthy, safe, and lively.



**above**  
Reallocate road space to people space  
**right**  
Directions for the City in four themes, Public Spaces Public Life Study 2020

- The Study's recommendations are centred on four themes:
- 1. A green and cool city** - continue the City's leadership in environmental sustainability and climate action
  - 2. Protected heart** - rethinking mobility and access to win back space for people to walk, cycle and stay as well as for green infrastructure. Key to achieving this in the Town Hall Precinct is progress on public spaces including Sydney Square and delivery of Town Hall Square, as well as focus on the streets that connect to these spaces.
  - 3. A city for all** – ensuring a public realm that is welcoming for all people
  - 4. A strong city identity** – capitalise on city amenities and strengthen public realm quality and identity.

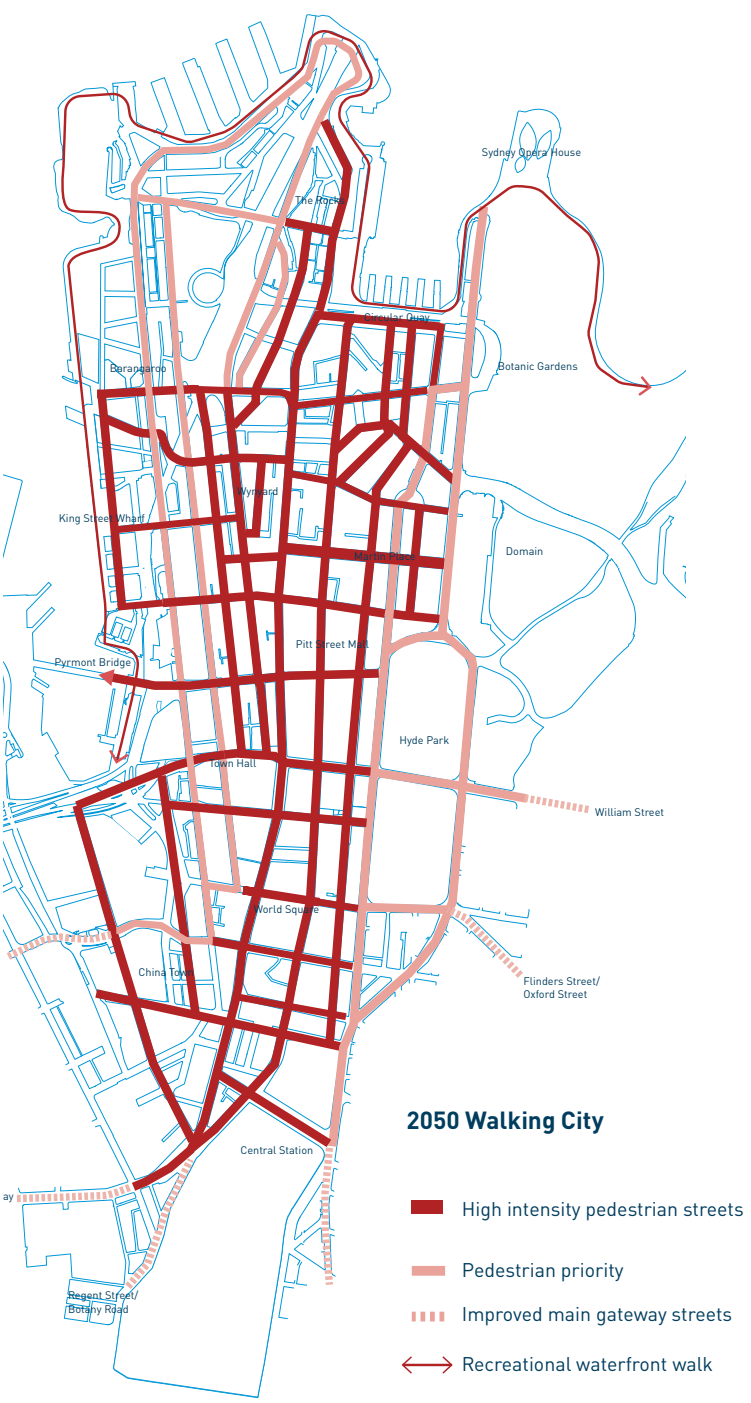
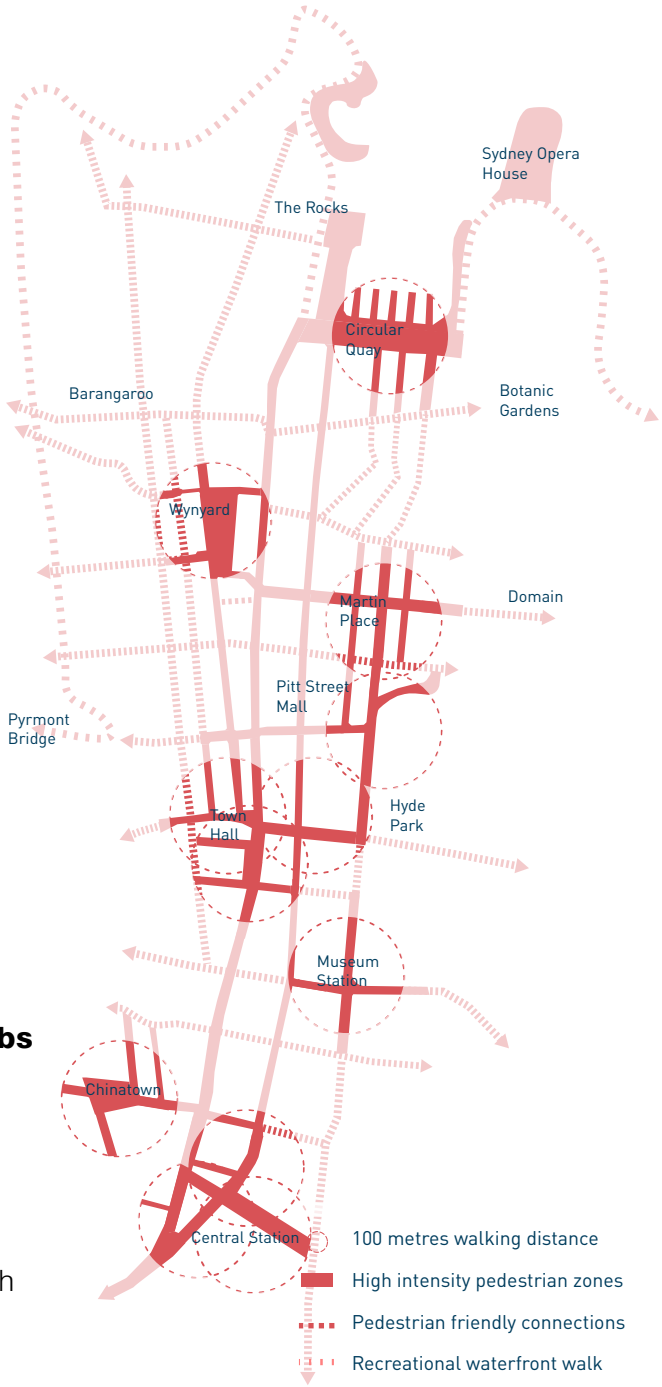


Town Hall Precinct Public Domain Plan

- More Space is required for:
- **Walking**
  - **Cycling**
  - **Socialising**
  - **Greening**
  - **Health and Wellbeing**

right  
**Pedestrian priority around transport hubs**  
As a priority, improve pedestrian amenity and priority around metro stations and public transport hubs.

far right  
**2050 Walking City**  
By 2050 the city should be a 'Walking City' with pedestrians prioritise and strong pedestrian priority throughout the city.



Town Hall Precinct Public Domain Plan



# Part Three

---

## Project context

*city of villages*





# Planning for growth in Central Sydney

**City Plan 2036**, the City’s Local Strategic Planning Statement, sets 13 priorities and a series of actions to achieve the vision and guide future changes to the City’s planning controls:

- 1. Movement for walkable neighbourhoods and a connected city
- 2. Align development and growth with supporting infrastructure
- 3. Supporting community wellbeing with social infrastructure
- 4. A creative and socially connected city
- 5. Creating great places
- 6. New homes for a diverse community
- 7. Growing a stronger, more competitive Central Sydney
- 8. Developing innovative and diverse business clusters in the city fringe
- 9. Protecting industrial and urban services in the southern enterprise area and evolving businesses in the Green Square-Mascot strategic centre

- 10. Protecting and enhancing the natural environment for a resilient city
- 11. Creating better buildings and places to reduce emissions and waste, and use water efficiently
- 12. Increasing resilience of people and infrastructure against natural and urban hazards
- 13. Open, accountable and collaborative planning.

The **Central Sydney Planning Strategy** outlines future development opportunities and associated public domain benefits for the city, allowing growth to occur whilst protecting key public spaces.

The strategy identifies significant development opportunities around the Town Hall Precinct, and notes the existing public space deficit. It reinforces the significance of Town Hall Square as one of three linked squares structuring the city.

The Strategy identifies areas of development uplift to the north and south of the Town Hall Precinct, whilst highlighting and reinforcing the established retail core character of the area.



Structure Plan  
Central Sydney Planning Strategy



## Supporting economic and cultural activities

### COVID-19 pandemic recovery

The Covid-19 pandemic has highlighted that our local economy is heavily reliant on population and visitor-driven industries. The arts, accommodation and food services, retail and other professional services have all suffered.

The Town Hall Precinct has been impacted in a number of ways. Stay at home orders and lockdowns have resulted empty offices, with small and service businesses forced to close. International students and casual workers who live in the city have been hit hard with casual / insecure employment disrupted and no government support. The lack of tourists has stalled the visitor economy. The overall economic impacts of the pandemic on the economy of central Sydney are significant and ongoing.

As the city works towards pandemic recovery, how we enliven and reimagine our city as a destination during the day and later at night will make a significant contribution to Sydney's recovery.

We expect physical distancing measures to be with us for some time. There is now pressure on public spaces to provide for physical distancing in what might have been previously crowded areas. This has led to a broader recognition of the benefits of public space for people.

Recovery will involve creating more space for people to safely access businesses in the area, to allow cafes to safely operate and support those returning to work in offices. As the City has done through the Alfresco Sydney program\* investigation could include pop-up festivals and lunchtime performances and the temporary use of parking and loading zones for alfresco dining.

\*in partnership with the NSW Government

Alfresco Sydney - making it easier for businesses to use public space for outdoor seating (Pitt Street)



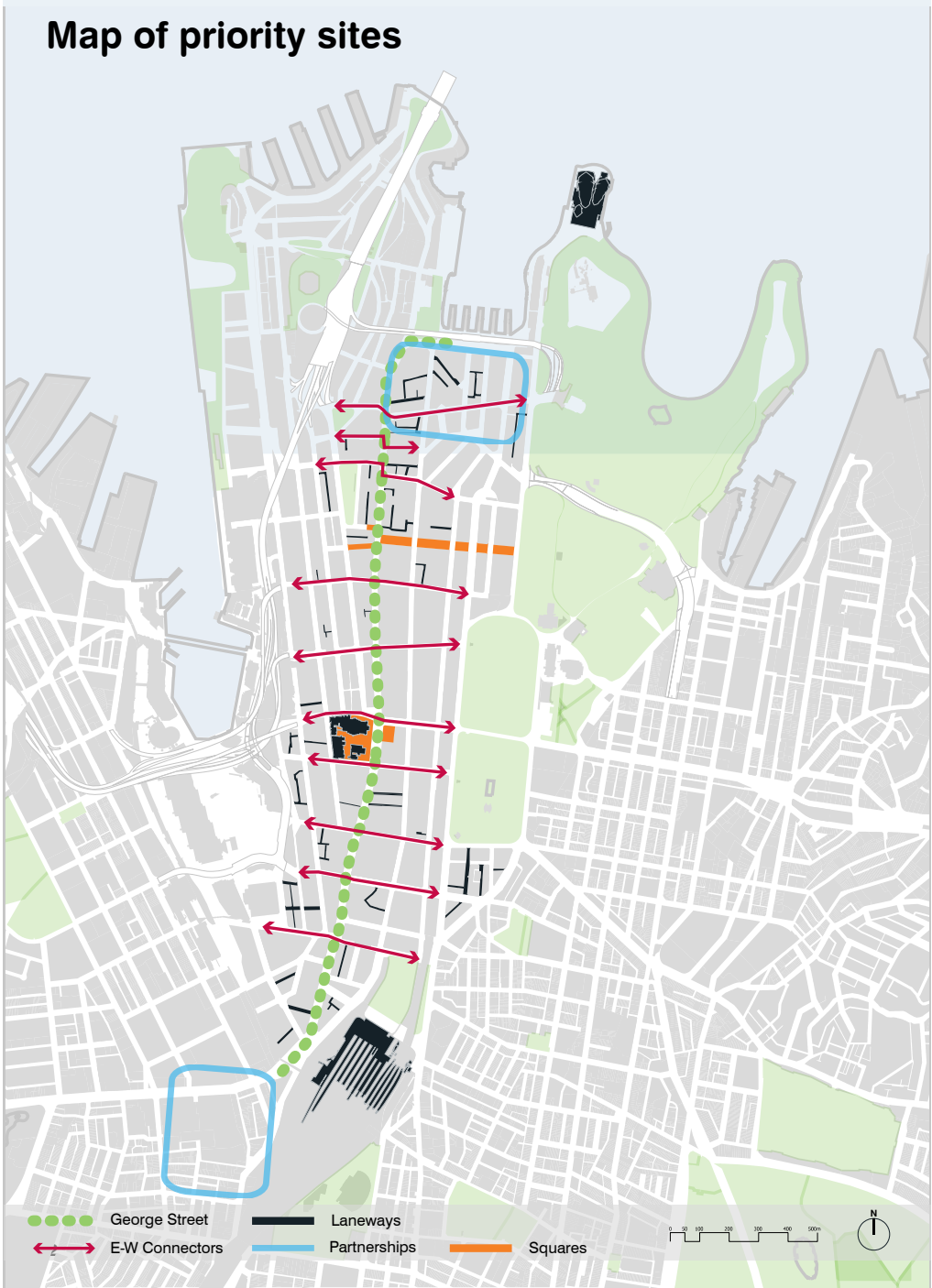


# Public Art

The City Centre Public Art Plan aims to bring inspiring public art with a permanent legacy to Sydney’s residents and visitors. By placing high quality public art in our urban spaces, the plan greatly contributes to Sydney’s social fabric and the quality of daily life for Sydneysiders. It also sets out processes to encourage and enable public art commissioning in Sydney. The map of priority sites highlights key east west connectors as well as focusing on the future Town Hall Square and Sydney Square as a site for future public art. Public art will form part of the proposal for Town Hall Square and will be further developed in the future as the project scope and timing are finalised.

A number of major developments including the Metro Station entry buildings in Park Street and Bathurst Street will include major Public Art contributions.

City Centre Public Art Plan - Map of priority sites



Town Hall Precinct Public Domain Plan

# Designing with Country

The City’s Stretch Reconciliation Action Plan 2020-23 recommends that the City recognise Aboriginal and Torres Strait Islander histories, cultures and achievements in Sydney through the Eora Journey: Recognition in the Public Domain.

The Eora Journey, meaning ‘the people’s journey’, is a program that celebrates the living culture and heritage of the Aboriginal and Torres Strait Islander communities in Sydney. Recognition in the Public Domain is one of the four key components of the Eora Journey. This project, overseen by art curator and writer Hetti Perkins, aims to reactivate the knowledge of specific places and events in Aboriginal history at key sites within the city.

In addition to the key projects already identified in the Eora Journey, the City is investigating ways to implement the concept of ‘Designing with Country’, including a specific focus on Aboriginal and Torres Strait Islander artists and cultural expression. Investigations will inform and guide the implementation of projects in this plan.

The City’s Barani website identifies the location of places that have historical associations for Aboriginal and Torres Strait Islander people in Sydney. Each place is connected to a historical theme that expresses an aspect of cultural life in Sydney. A number of sites are located in the Town Hall Precinct.

Town Hall Precinct Public Domain Plan



29



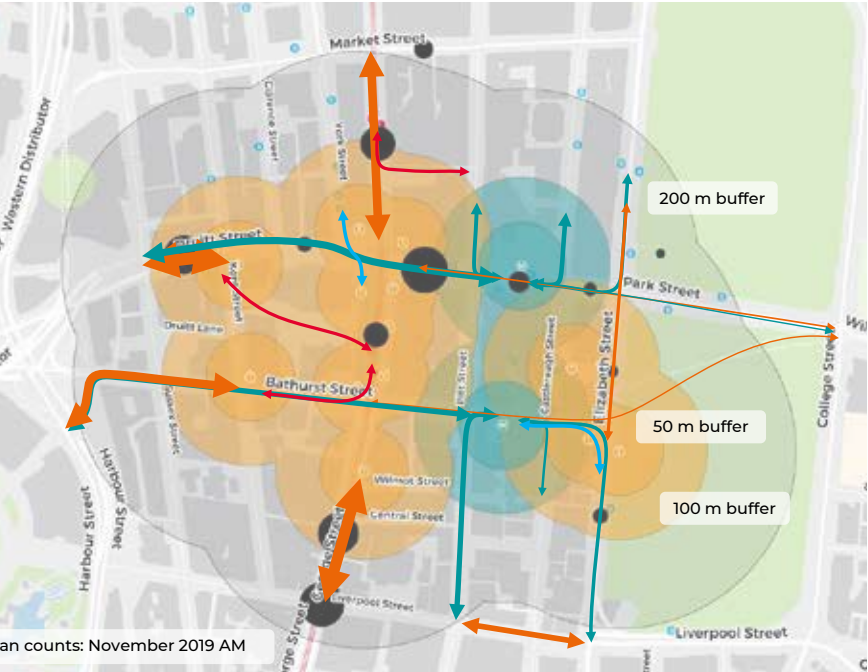
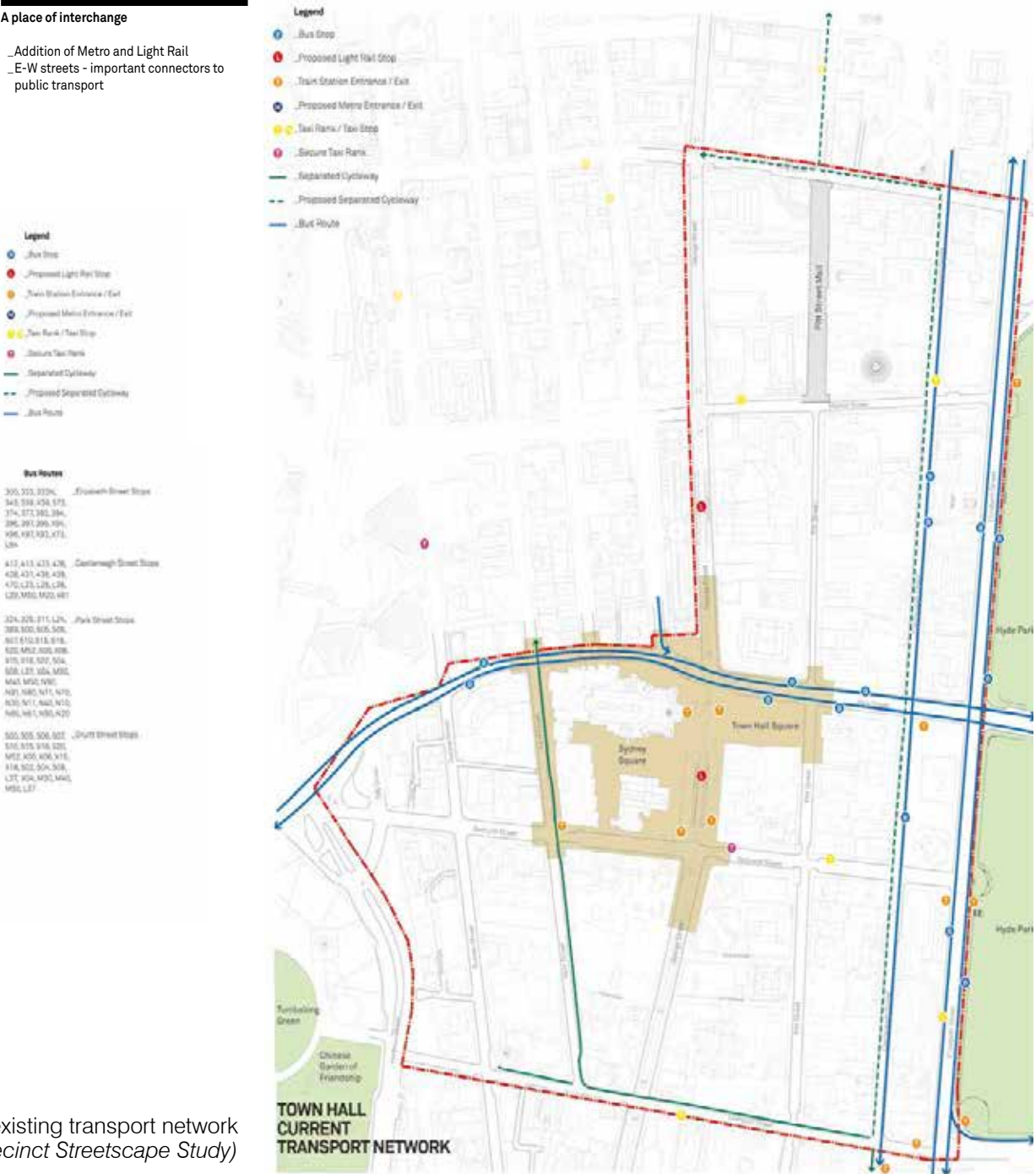
# Transport and cycling

The public domain around Town Hall is a growing place of interchange between transport modes, as well as a destination itself for a large number of workers, students and residents of the precinct.

Based on a review of Journey to Work (2016) survey results for the region, more than 75% of trips are undertaken using public transport, with approximately 55% using Sydney Trains.

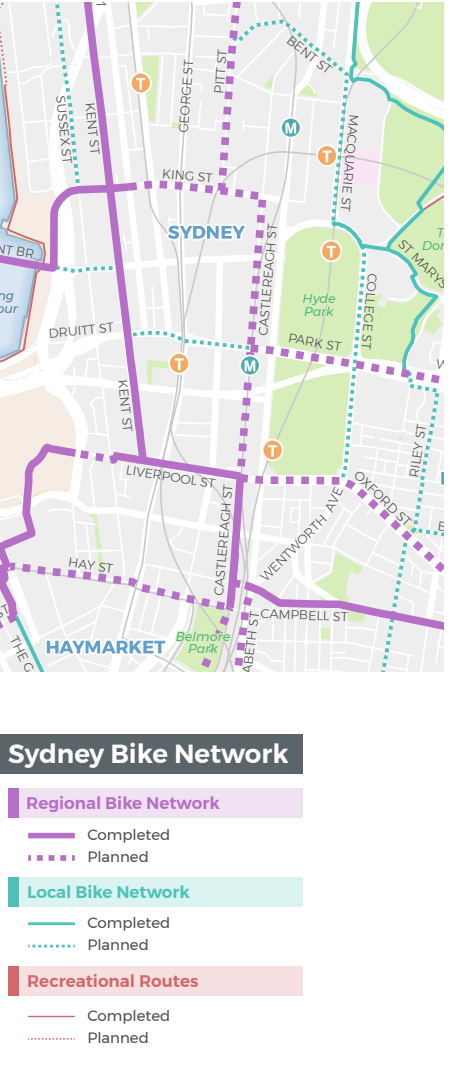
As a public transport interchange, customers can access Sydney Trains, Sydney Buses, Sydney Light Rail. This interchange role will increase with the completion of Sydney Metro Pitt Street station planned for 2024. The state government recognises the critical role of the area as an interchange precinct, with the Sydney City Centre Access Strategy flagging opportunities to reduce through traffic and improve pedestrian circulation in key streets.

right Town Hall Precinct existing transport network (HASSELL Town Hall Precinct Streetscape Study)



left Key desire lines for people who walk including those that may interchange between modes (WSPI Walking safety and place improvements: Street operation and configuration study)

right City of Sydney Cycling Strategy and Action Plan 2018-2030



**Cycling**

The City's Cycling Strategy and Action plan provides a framework for delivering a connected network of cycleways, suitable for all ages and abilities, travelling in, to or through the city.

Within the Town Hall Precinct, planning for a new regional cycleway on Castlereagh Street is underway. This will connect to the Pitt Street cycleway via a future extension of the King Street cycleway.

The Pitt Street pop-up cycleway was delivered by the City together with Transport for NSW to help the community to return to work and local businesses safely, supporting NSW's pandemic recovery. The growth in people riding on this cycleway is unparalleled, with the ridership increasing 500% between the first week and twelfth week\*of operation (in two directions). This shows that there is suppressed demand for cycling in the city centre, which can be accommodated by more safe separated facilities.

Work is now underway to make the pop-up cycleway in Pitt Street a permanent part of the cycleway network.



# Key challenges & approach

## Precinct challenges

Within the next fifteen years central Sydney will see the creation of an additional 130,000 jobs and an influx of development. The introduction of the new metro line with stations in Park Street and Bathurst Street will place significant additional pressure on the precinct's already overcrowded footpaths.

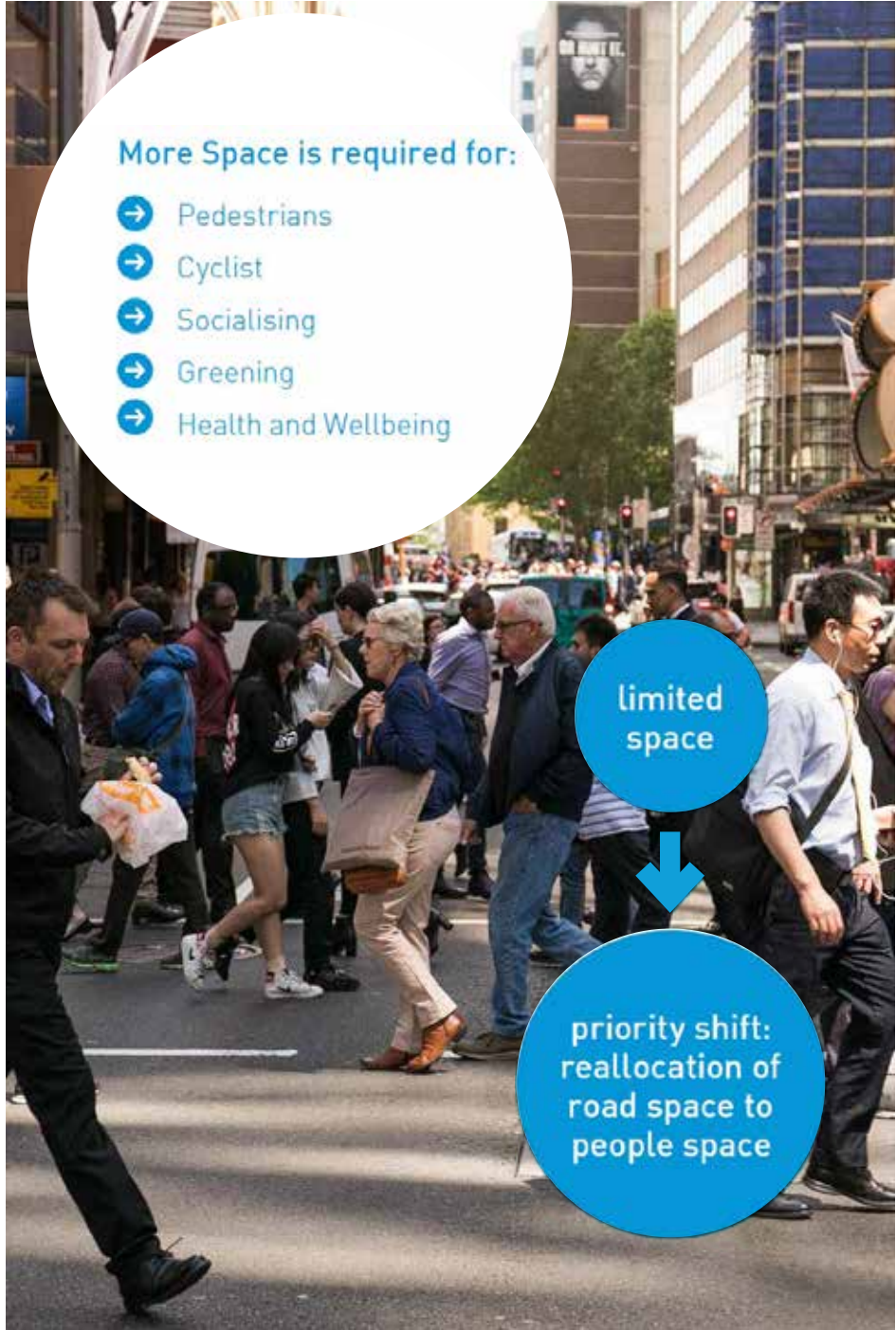
The need for additional public space within the precinct is great, and delivering Sustainable Sydney 2030's proposed Town Hall Square is critical to meeting this need. The long term nature of delivering a new public space places even more importance and pressure on streets to facilitate pedestrian movement and public life.

## Re-balance the priority of the streets

The over arching concept for this plan is to re-balance the priority of the streets in the Town Hall precinct.

This plan seeks to significantly reduce the number of vehicles in the precinct - whether moving, parked or loading. By reclaiming traffic lanes this plan aims to make significantly more space for greening and pedestrians.

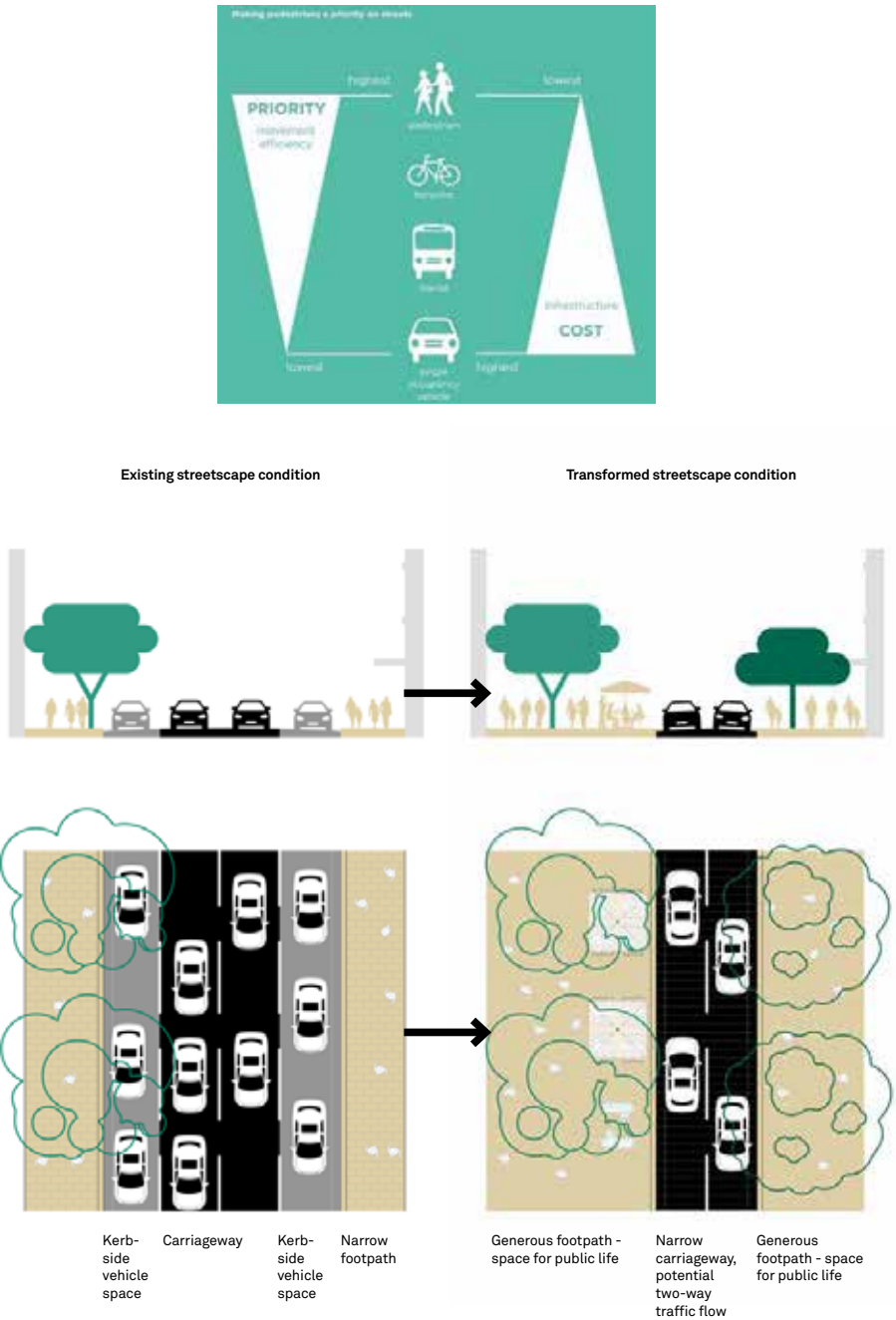
This over arching concept has underpinned and guided the proposed project opportunities included in this plan.



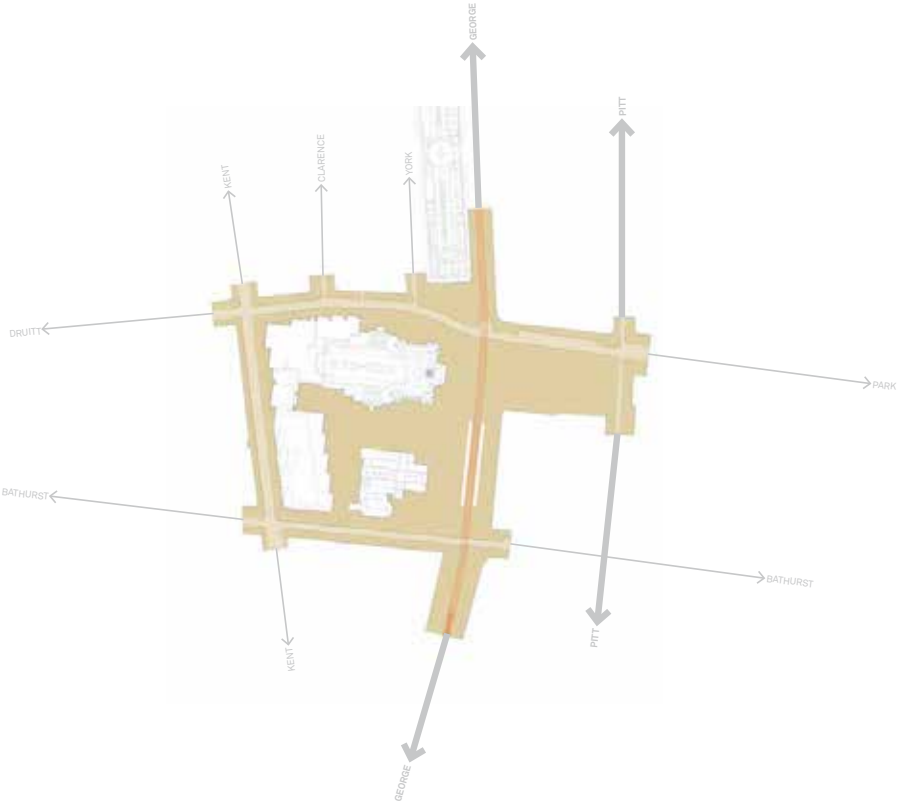
**Right**  
Precinct challenges & priorities  
(Public Spaces Public Life 2020)

**Facing page**  
Project approach  
(HASSELL Town Hall Precinct  
Streetscape Study)

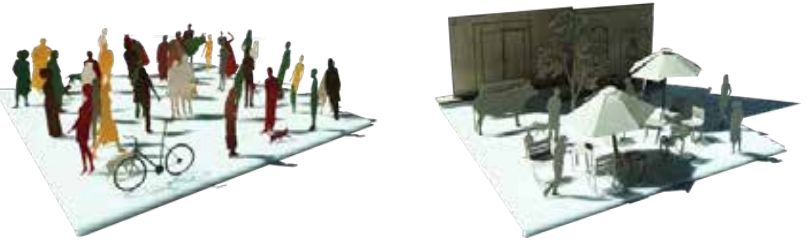
## Re-balance the priority of the streets



## Town Hall Square The heart of the precinct



## Creating more space for people, with more trees, comfortable seating and pleasant spots to dwell. Creating space for:



**Movement - walking, crossing**  
**Improving:**  
\_Footpath widths and capacity to deal with increased demands  
\_Footpath quality and condition  
\_Connections - crossing, waiting (time and space)

**Public life**  
**Creating space for:**  
\_Smaller scale moments - places to pause, wait, or linger  
\_To 'look-up', to observe  
\_Outdoor dining  
\_Activation - both temporary and permanent



## Key challenges & approach

## Approach to cars, vehicles, traffic

Walking is the predominant mode of movement throughout the Town Hall Precinct, with new transport options increasing the number of commuters using Town Hall streets to arrive and interchange.

Rationalising kerb side uses, widening footpaths where possible and reducing vehicle lane widths and number of lanes contributes to a slower traffic environment, encouraging through-traffic to utilise alternate routes such as the existing Cross City Tunnel.




Traffic on Market Street and in the Cross City Tunnel  
(HASSELL Town Hall Precinct Streetscape Study)

## Loading and parking

Guided by the City's Central Sydney On-street Parking Policy, this plan prioritises street space to give the greatest space to the greatest number of users. Retention of on street loading is important to support the operation of businesses in the city. Consolidated basement loading is encouraged for larger sites, however detailed consideration of access to kerbside loading is important particularly for small sites or heritage buildings with no off-street loading capacity. Detailed analysis has been undertaken to identify these sites, and further design development will be undertaken to ensure adequate access to loading. Kerb-side uses such as taxi and uber also have a role to play.

Kerbside use priorities  
City of Sydney Central Sydney On-Street Parking Policy

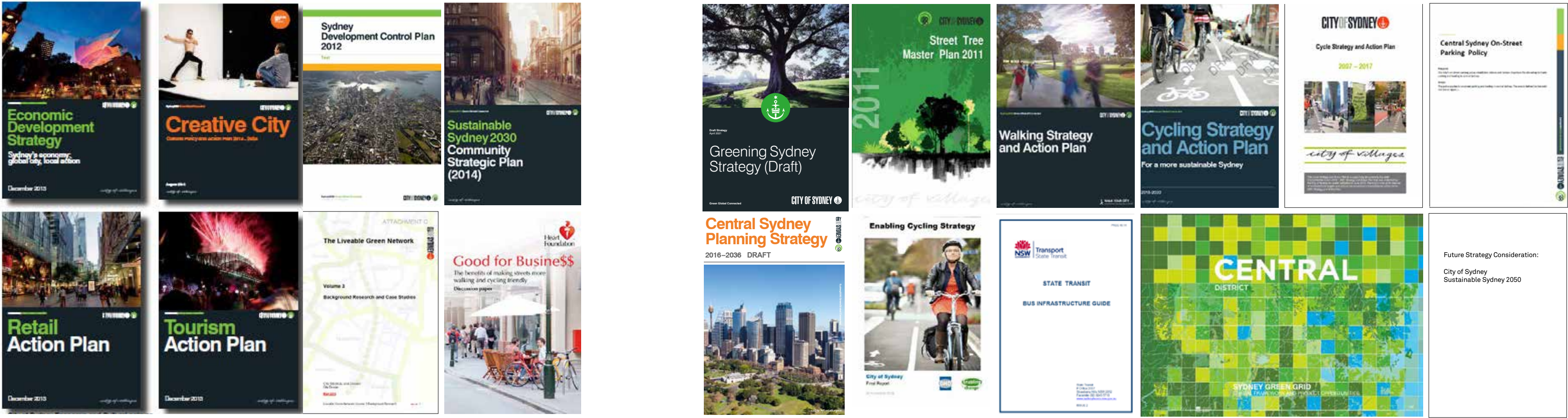
Priority	Kerbside use	Service Objective
 <p>Highest</p> <p>Lowest</p>	Taxis	<p>To provide taxi ranks within 150m of any location in central Sydney.</p> <p>To provide pick up and drop off locations at or near key accommodation, tourism, commercial and residential facilities.</p> <p>To maximise safe pick up or set down opportunities, while minimising congestion impacts.</p>
	Delivery and service vehicles	To provide Loading Zones within 100m of any location without on-site parking or loading.
	Mobility parking	<p>To provide dedicated mobility parking spaces within 100m of a concentration of specialist medical or human services facilities.</p> <p>To provide dedicated mobility parking or ticket parking that can be used by mobility permit holders within 150m of any location in central Sydney.</p>
	Authorised Vehicles Zones - essential services	Spaces to be provided as required to facilitate postal collection, policing, and parking of dedicated emergency services or incident response vehicles.
	Authorised Vehicle Zones – coach parking	<p>To provide short term coach parking for group pick up and drop off near to major destinations or accommodation.</p> <p>To encourage turnover of on-street coach parking and use of off-street facilities for long-stay coach layover.</p>
	Authorised Vehicle Zones – passenger vehicles	To provide parking for government agencies or consular parking only where alternative off-street parking is not available within reasonable distance, or where on-street parking is required for exceptional circumstances.
	General kerbside parking	<p>To provide time limited ticket parking and parking wherever or whenever space is not required for higher priority uses.</p> <p>To provide ticket parking with resident permit-holder exemptions in locations appropriate for long-stay kerbside parking.</p> <p>To provide dedicated long-stay motorcycle parking for use by commuters.</p>

Kerbside use priorities  
City of Sydney Central Sydney On-Street Parking Policy



Strategic context

The following additional strategies and documents have informed the opportunities for the Town Hall Public Domain Plan.





# Part Four

---

## Public domain opportunities

*city of villages*





# Opportunities

Opportunities have been identified to implement the Guiding Directions within the Town Hall Precinct. These opportunities range from clearly definable project needs, to longer term issues for further exploration and resolution.

Following exhibition of this Draft Public Domain Plan, the project opportunities can be refined and an implementation plan developed.

In some cases, temporary tactical interventions can be utilised to achieve some of the key project objectives in the shorter term, allowing concepts to be tested whilst proving time to resolve complex issues.

## Precinct-wide overlay projects

The public domain opportunities indicated here are aspirational, and may not be achieved on every street within the precinct. Where the public domain cannot be extended due to transport or traffic constraints, improvements to the quality of the environment become critical. Implementation of the City's granite paving program, street furniture and planting opportunities are important overlays to achieve this.

## Three types of project opportunities are identified:

### 1. Public spaces

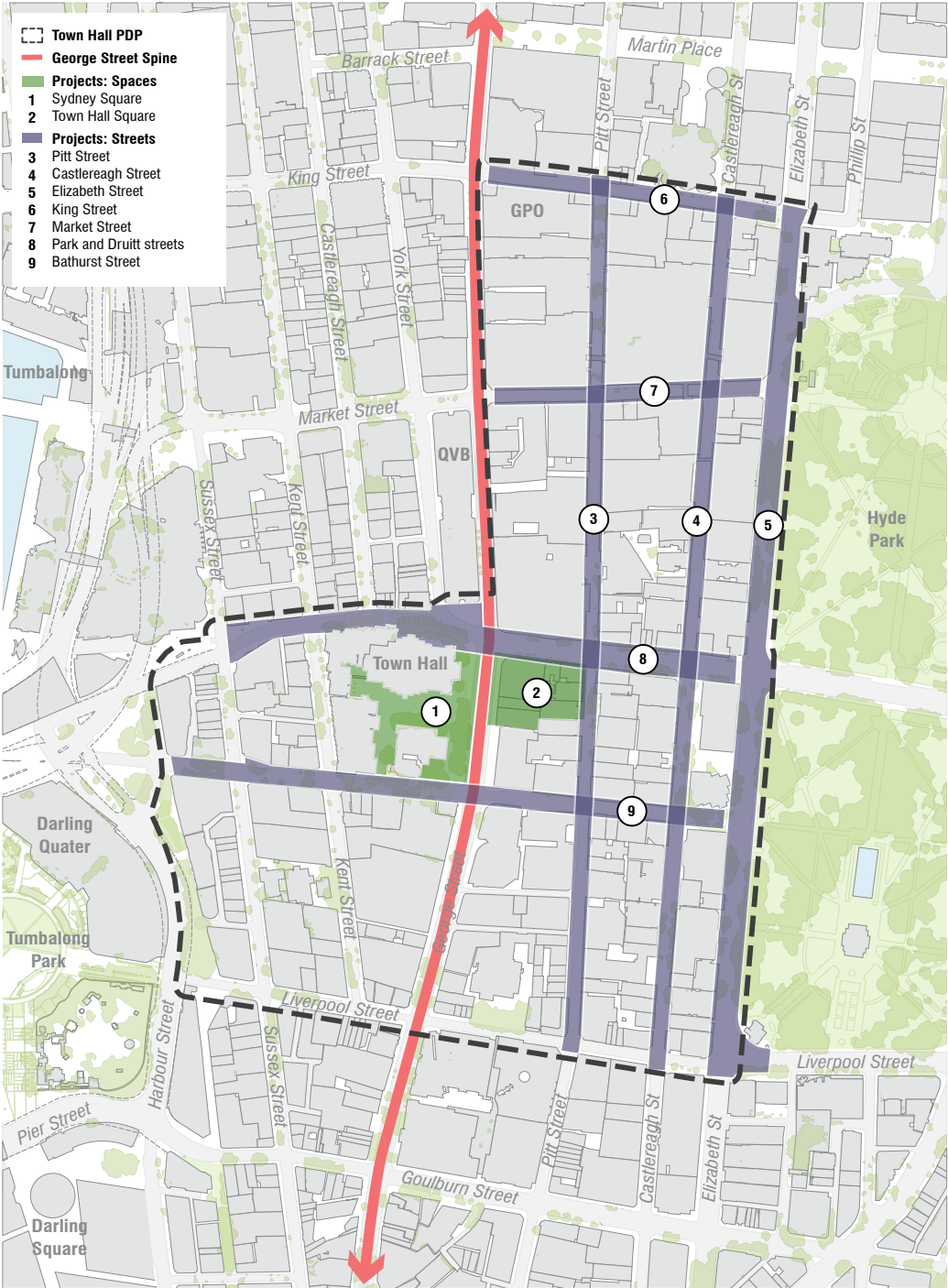
- Sydney Square
- Town Hall Square

### 2. Streets

- Pitt Street
- Castlereagh Street
- Elizabeth Street
- Bathurst Street
- Park/Druitt Street
- Market Street
- King Street

### 3. Tactical, temporary and short term

Town Hall Precinct - Suggested project opportunities and priorities





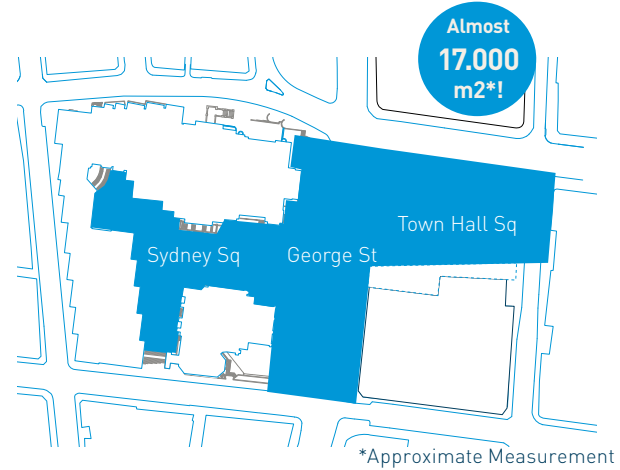
# Public spaces

Delivering the 'one spine, three squares' structure of our City is central to Sustainable Sydney 2030. This framework creates a strong, larger, legible and interconnected public space network to support future needs of the City's population and visitors.

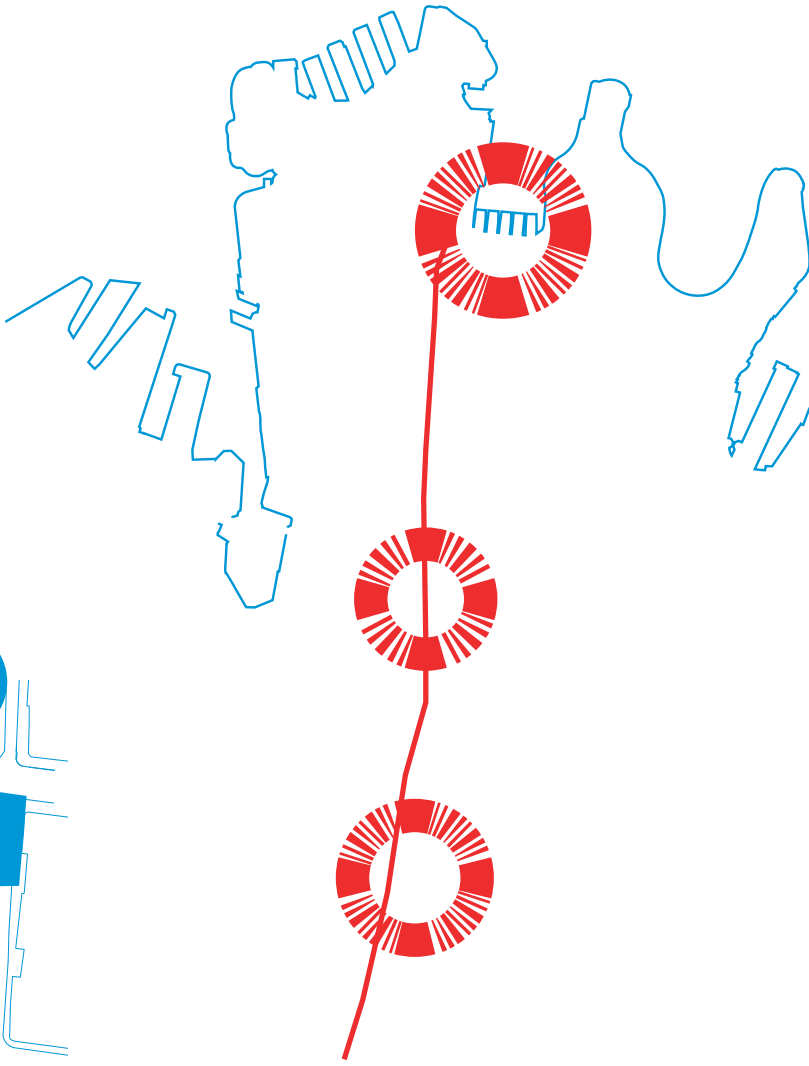
With the completion of the George Street spine, the focus now shifts to the squares at Circular Quay, Town Hall and Central.

Three spaces make up the Town Hall public space: Sydney Square, George Street pedestrian area and the future Town Hall Square. The combined space at almost 17,00sqm will be one of the largest public spaces in Sydney, larger than Federation Square.

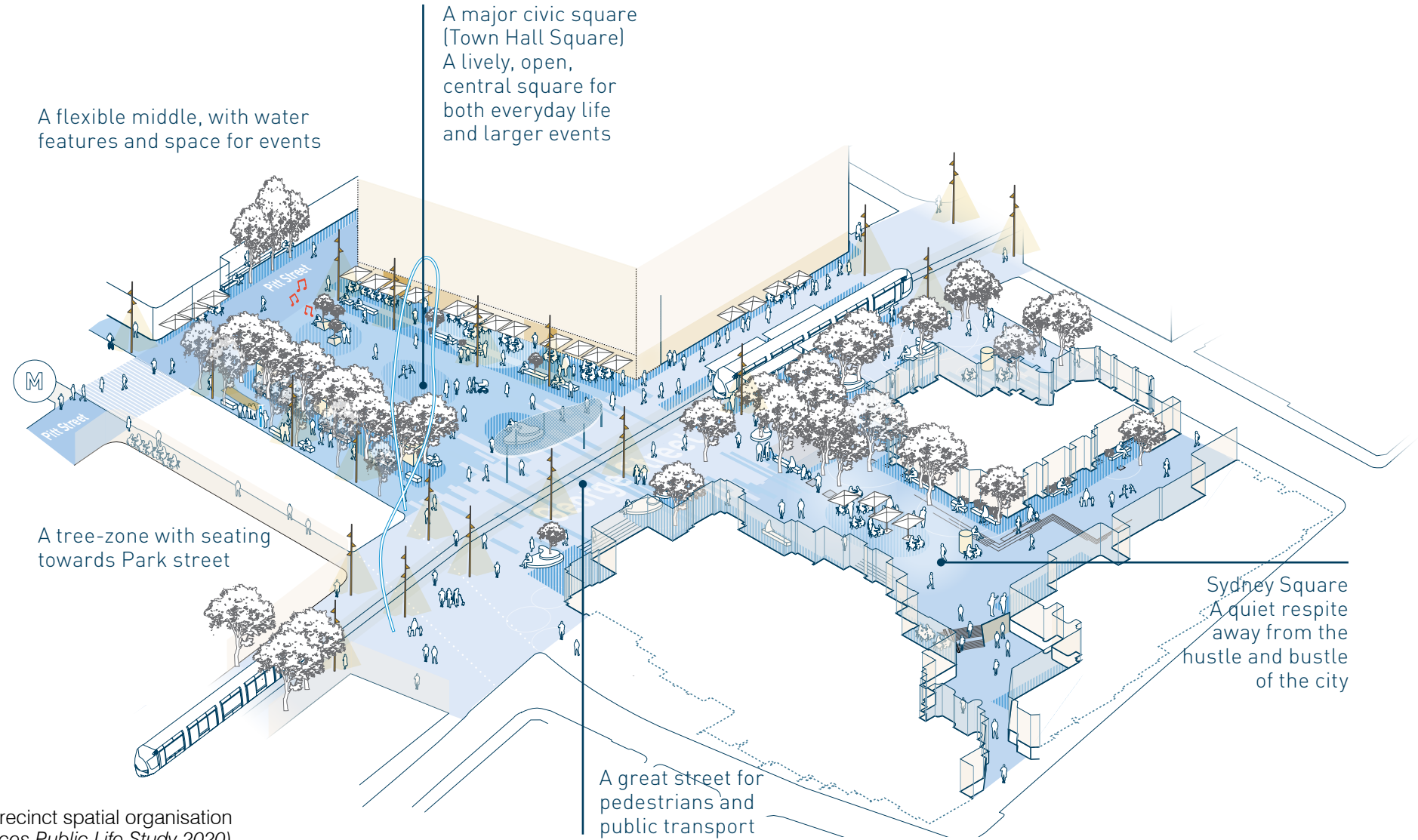
These three spaces have their own characteristics and qualities, and are considered here in their own right as well as part of a whole.



Three spaces make up the precinct  
(Public Spaces Public Life Study 2020)



A Strong City Identity  
(Public Spaces Public Life Study 2020)



Town Hall precinct spatial organisation  
(Public Spaces Public Life Study 2020)



# Town Hall Square

## Existing condition

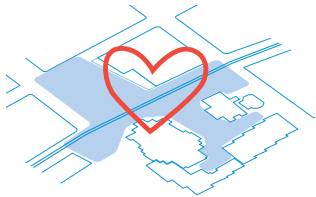
Currently occupied by commercial buildings, the Town Hall Square site is located on George Street in the retail heart of Sydney. It is surrounded by some of Sydney’s finest sandstone buildings, which give the context a consistent scale and palette.

The current adjacency to Park Street is busy and noisy, dominated by buses and heavy vehiculr traffic (refer to Park Street section).



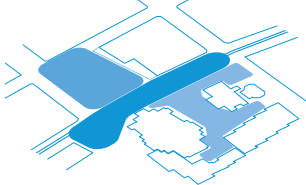
Existing view towards Town Hall, the Woolworths building on the left occupies the future Town Hall Square site

### The heart of central sydney



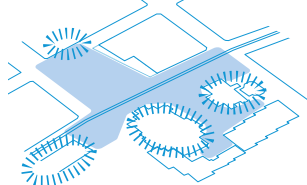
Unify the three different spaces, Town Hall Square, George Street and Sydney Square into one place for locals and visitors to experience. Create a livingroom for the city.

### 1 unified context - 3 spaces with individual characters



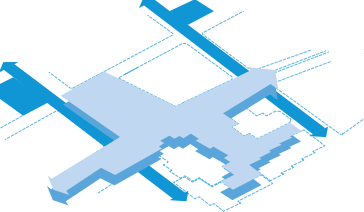
Strengthen the character of the three different spaces within the Town Hall context. The three have different preconditions and character - and support and compliment each other.

### Emphasize The heritage buildings



The Town Hall precinct should enhance the experience of the heritage architecture as well as showing new ways of interacting with it.

### Strong linkages above & below ground



Acknowledge subterranean retail and station spaces. Create good and legible connections to the underground.

Principles for Town Hall Square  
(Public Spaces Public Life Study 2020)

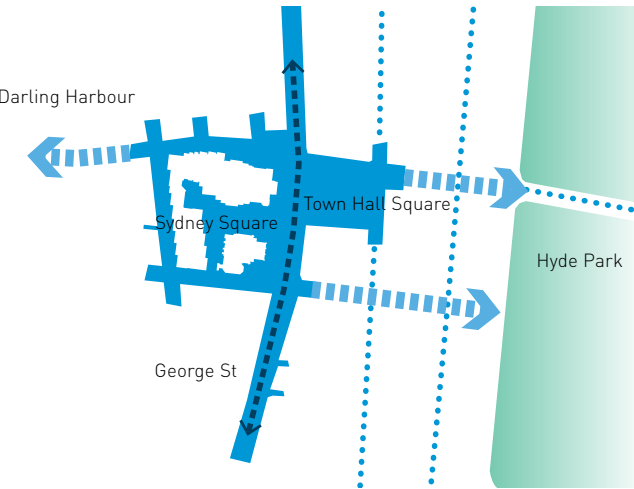
Town Hall Precinct Public Domain Plan

## Principles

Public Spaces Public Life 2020 reinforces the critical role of Town Hall Square, and the importance of delivering the square to the City.

*“The new square is an essential part of the one spine three square concept providing Sydney with a needed, centrally located gathering space where all kinds of activities can take place; Large arrangements and festivals but also everyday activities.”*

PSPL 2020 establishes principles (left) for establishing a new Town Hall Square opposite Town Hall in conversation with Sydney Square.



Town Hall Square is an important part of a wider context



# Town Hall Square

## Vision

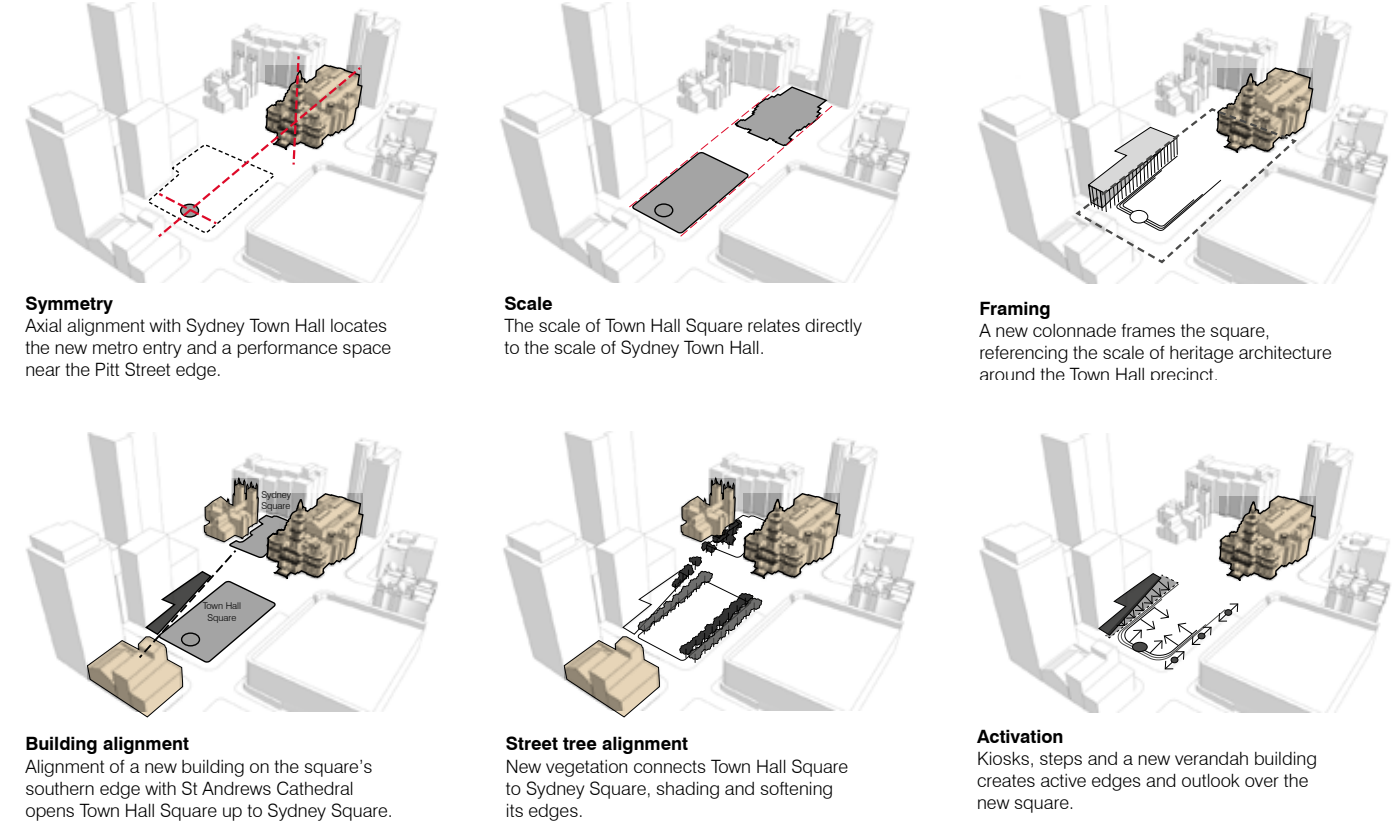
One of the key project ideas of the City's Sustainable Sydney 2030 vision is a new Town Hall Square opposite Sydney Town Hall, on a site predominantly occupied by the Woolworths building.

Towards 2050, Town Hall Square remains central to the vision for Sydney. The new square is at the heart of Sydney's civic centre, imagined as a contemporary space for public life, flanked by active edges of a moderate scale.

## Opportunities

The Town Hall Square project can be refreshed to address new opportunities presented by the Pitt Street metro station and the changing role of Park Street as a green pedestrian boulevard adjacent to the square.

Cementing the Town Hall Square as a project idea for Sydney's 2050 vision will reinforce this project as a critical part of the future public domain. The program for delivery will be subject to existing commercial leasing arrangements and decisions of the future Council.



Six moves to create a civic square at the heart of Central Sydney  
*Concept by Bates Smart, Matthew Pullinger & Paddock Landscape Architects*



Artists impression - SS2030 Town Hall Square  
*Concept - Tony Caro Architects*

**Right** Town Hall precinct spatial organisation  
*Concept by Bates Smart, Matthew Pullinger & Paddock Landscape Architects*



Town Hall Precinct Public Domain Plan