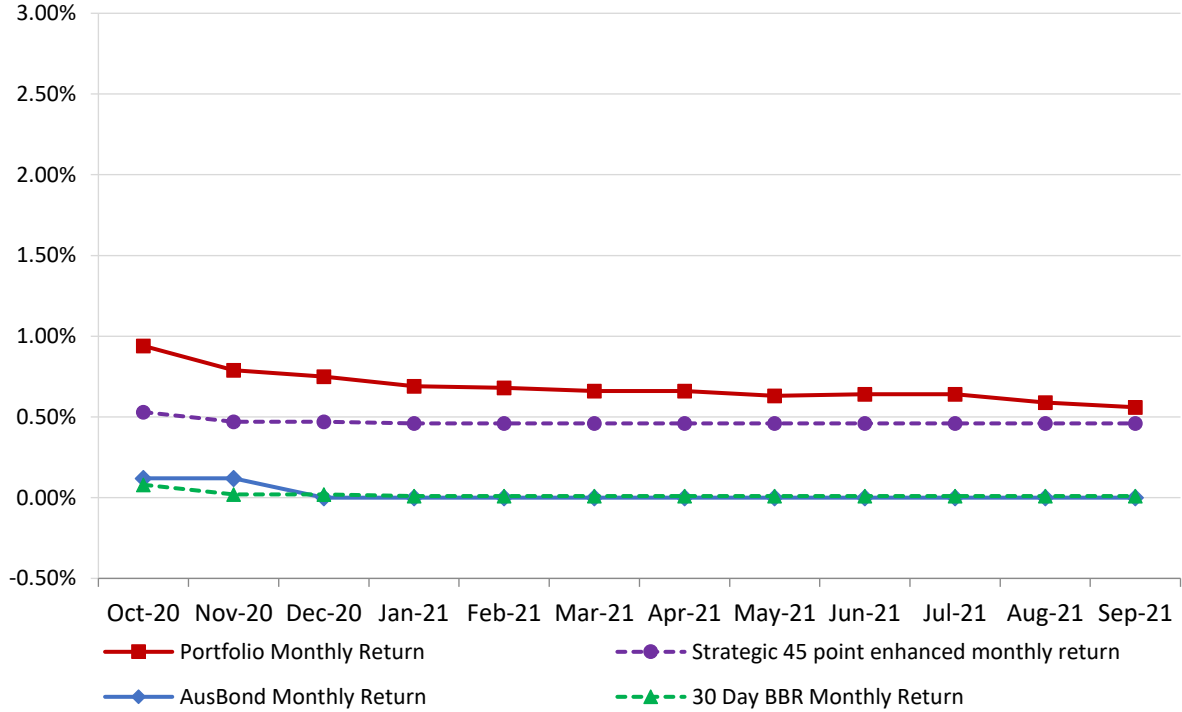


Attachment B

**Investment Performance
as at 30 September 2021**

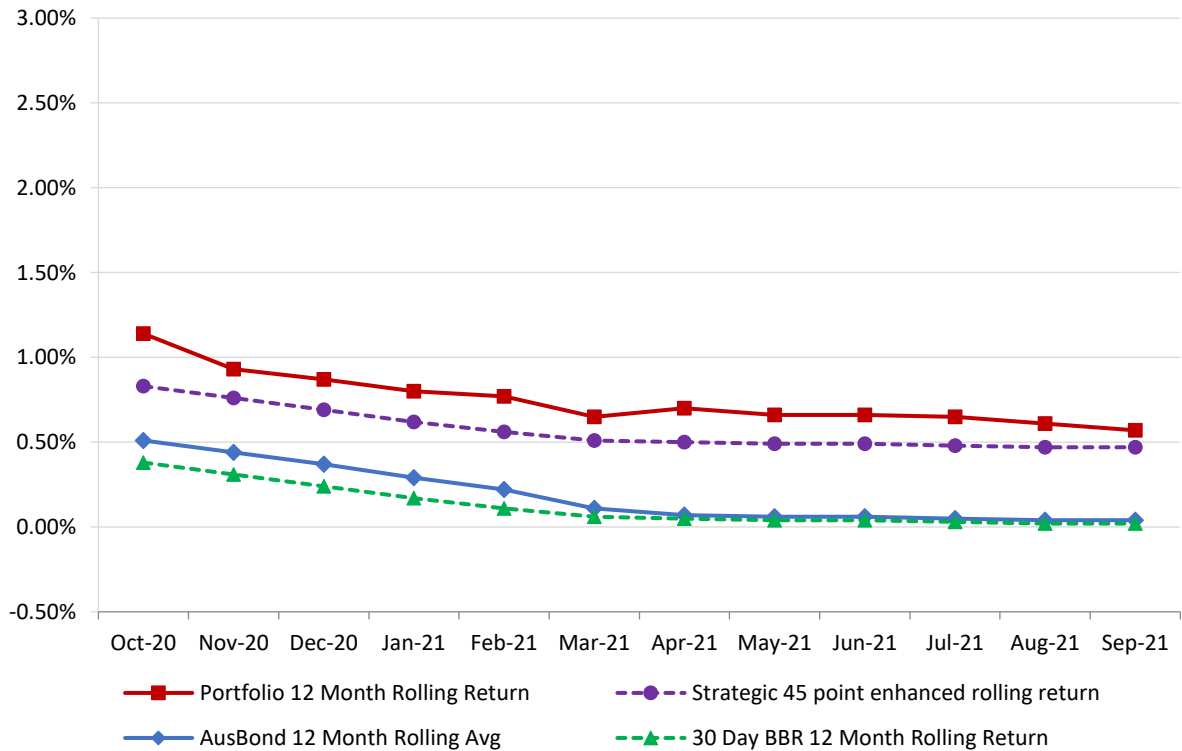
Monthly Results

Actual Portfolio vs Strategic Enhanced Benchmark vs AusBond Benchmark vs 30 Day BBR Benchmark
September 2021

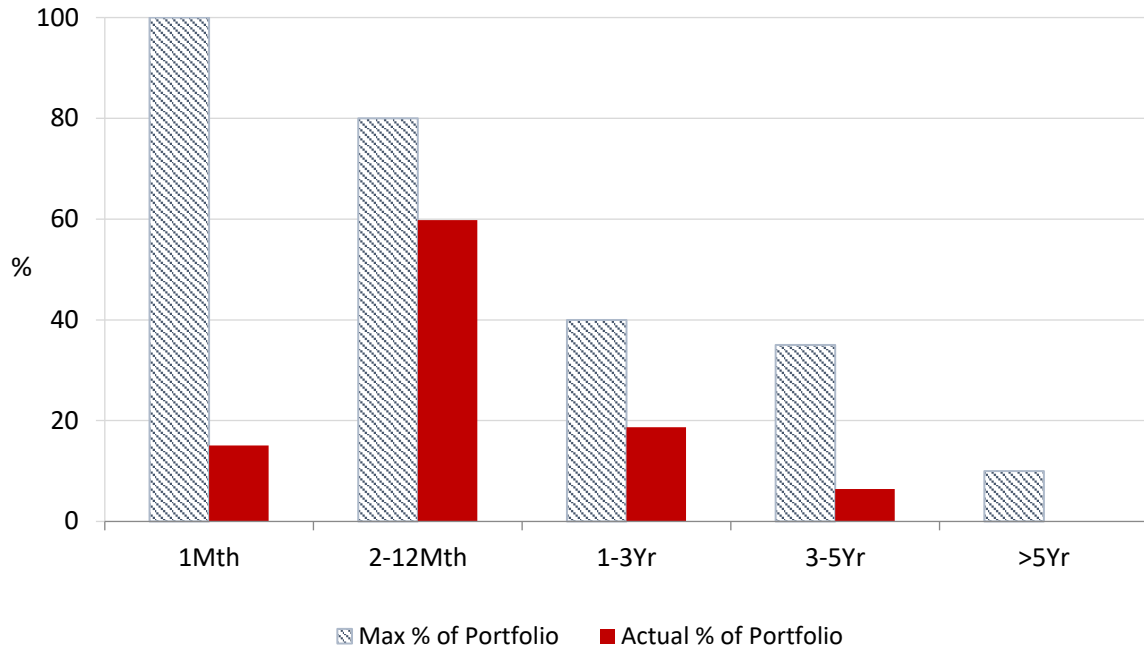


12 Month Rolling Averages

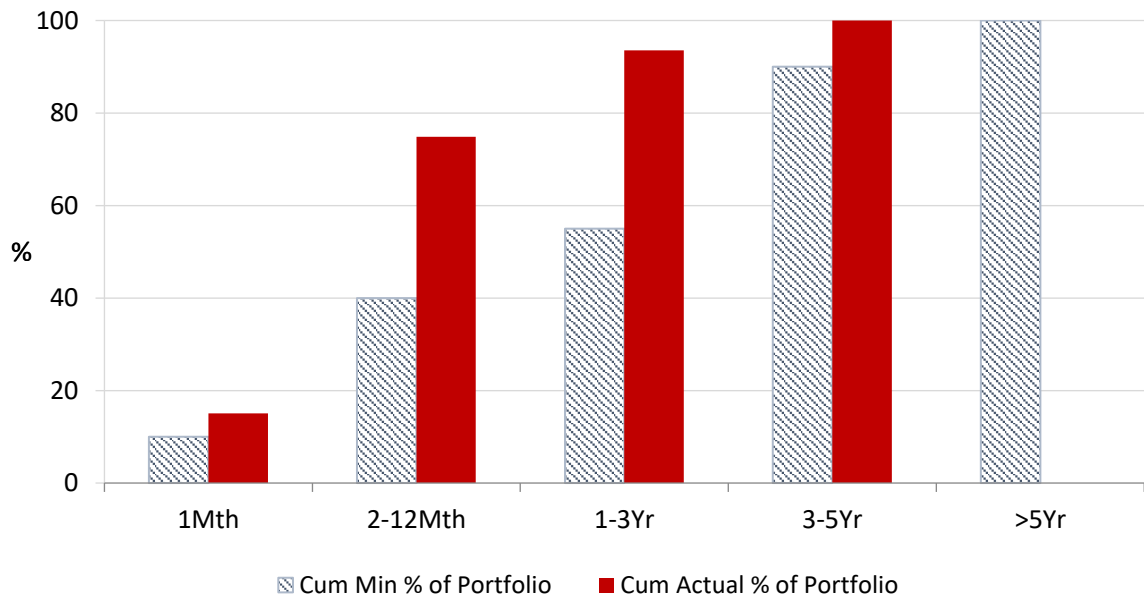
Actual Portfolio vs Strategic Enhanced Benchmark vs AusBond Benchmark vs 30 Day BBR Benchmark
September 2021



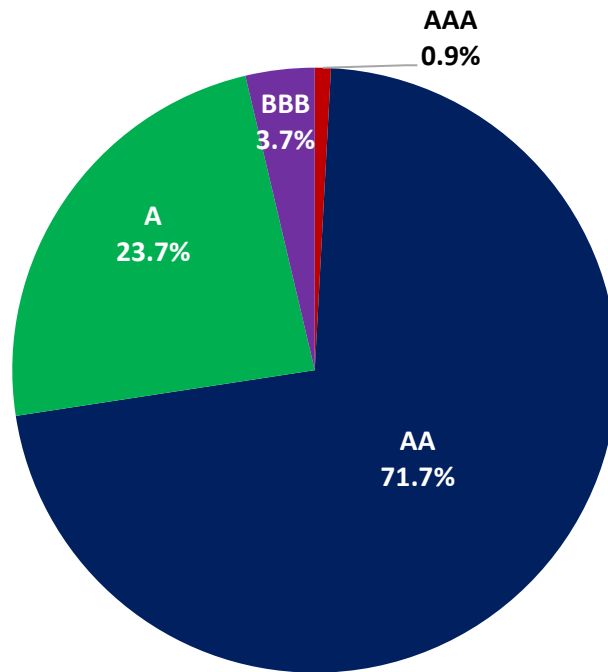
Portfolio Liquidity - Maximum Allowances as at 30 September 2021



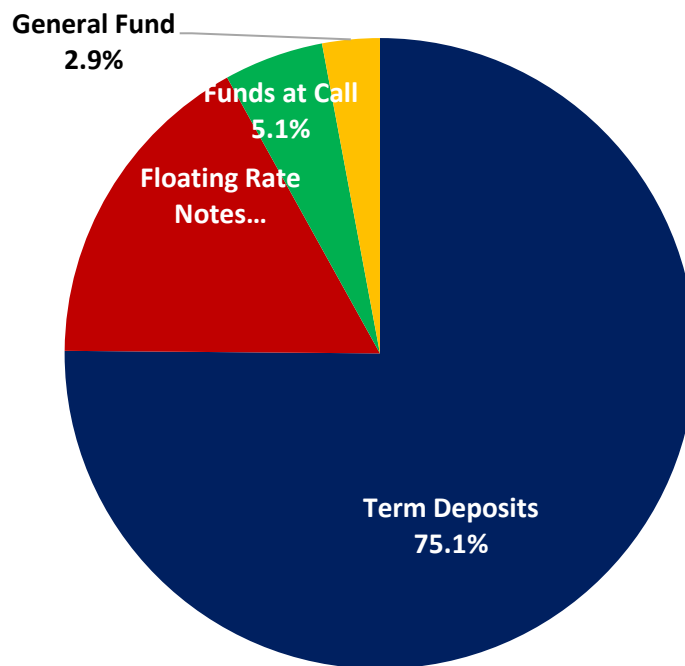
Portfolio Liquidity - Minimum Allocations as at 30 September 2021



Risk Profile as at 30 September 2021



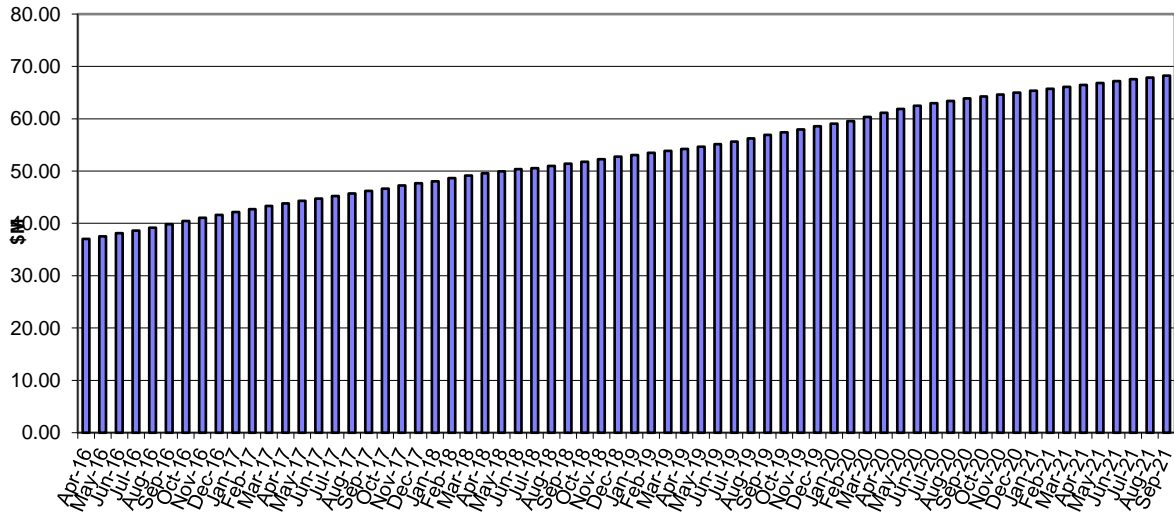
Investment Product Profile as at 30 September 2021



INVESTMENT AND CASH DISTRIBUTION BY FINANCIAL INSTITUTION
as at 30 September 2021

Institution Category	Financial Institution	Amount \$M	Financial Inst. %	Institution Cat. %
Australian Big 4 Bank (and related institutions)	ANZ Bank	18.0	2.5	
	Commonwealth Bank	225.3	31.6	
	National Aust Bank	70.7	9.9	
	Westpac Banking Corporation	192.3	27.0	
Big 4 Total		506.3		71.0
Other Australian ADIs and Australian subsidiaries of foreign institutions	Bank Australia Limited	5.0	0.7	
	Bank of China	4.5	0.6	
	Bank of Queensland	34.0	4.8	
	Bendigo & Adelaide Bank	50.0	7.0	
	Great Southern Bank (formerly Credit Union Australia)	4.3	0.6	
	IMB	10.0	1.4	
	ME Bank	16.0	2.2	
	Suncorp Bank	18.4	2.6	
	Macquarie Bank Ltd	49.9	7.0	
	Northern Territory Treasury Corporation	10.0	1.4	
	Newcastle Permanent Building Society	5.0	0.7	
Other ADI Total		207.1		29.0
Grand Total		713.4	100.0	100.0

Cumulative Outperformance over AusBond Benchmark - 2015-2021



Cumulative Outperformance over 30 Day BBR Benchmark - 2015-2021

