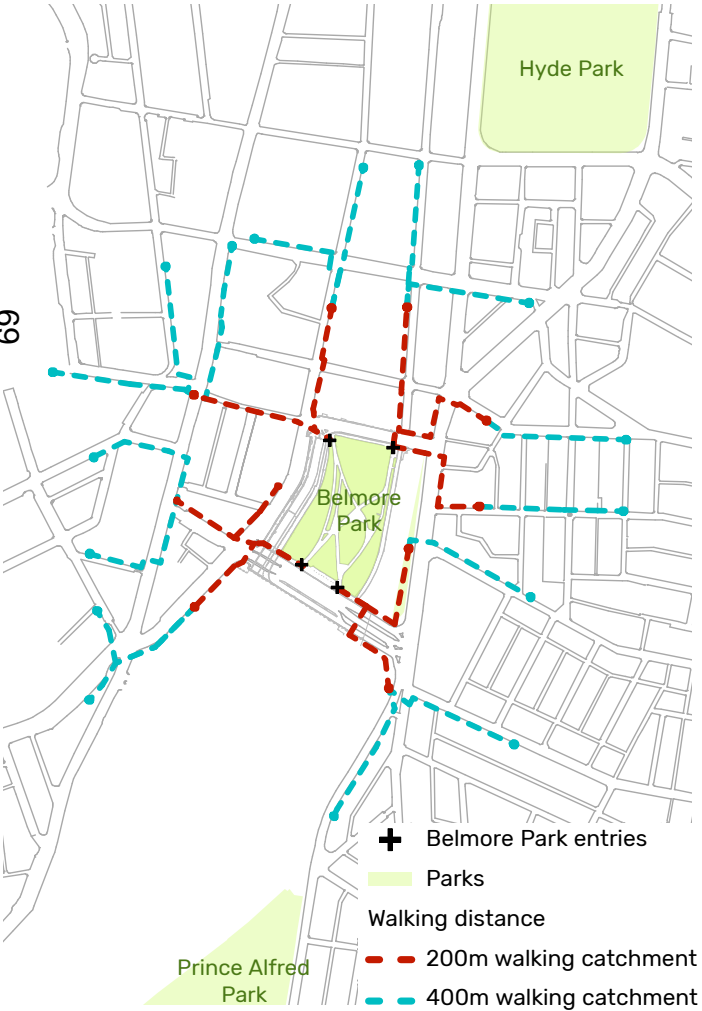
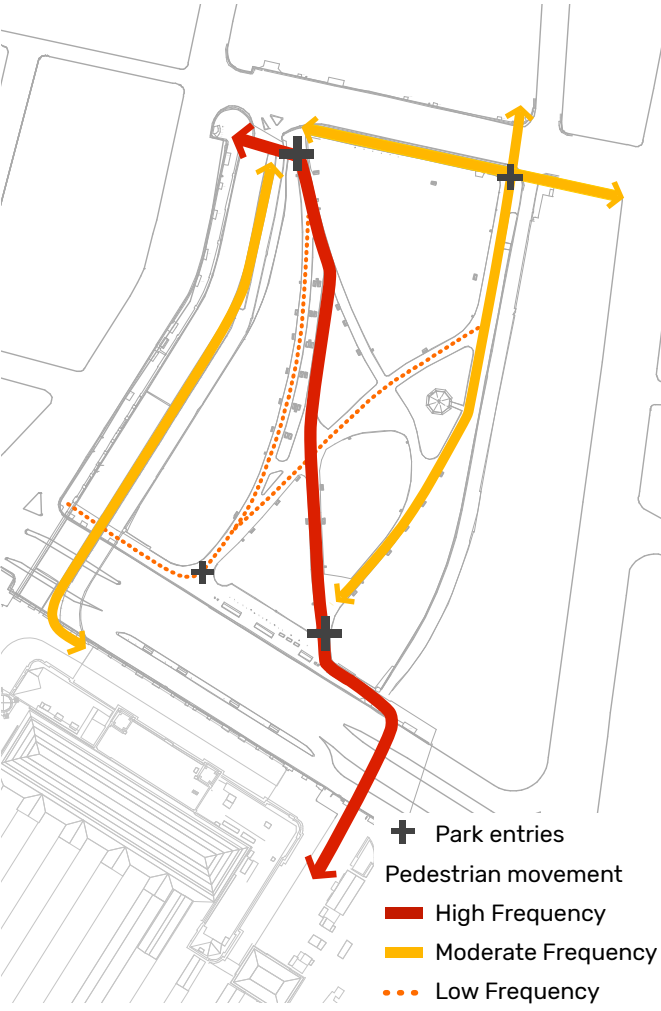


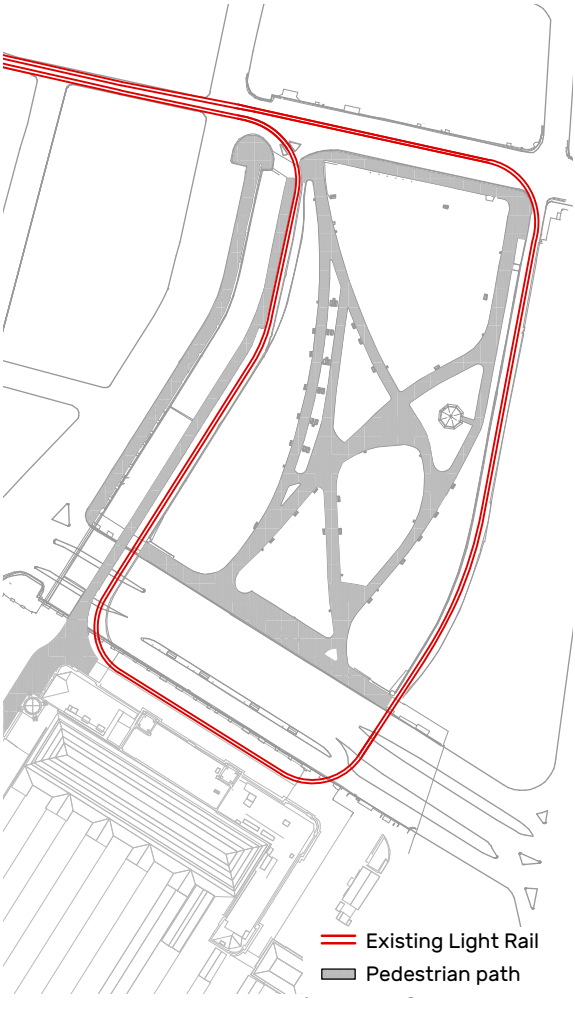
Walking catchment



Existing park circulation



Existing park circulation



Belmore Park upgrade (cont')

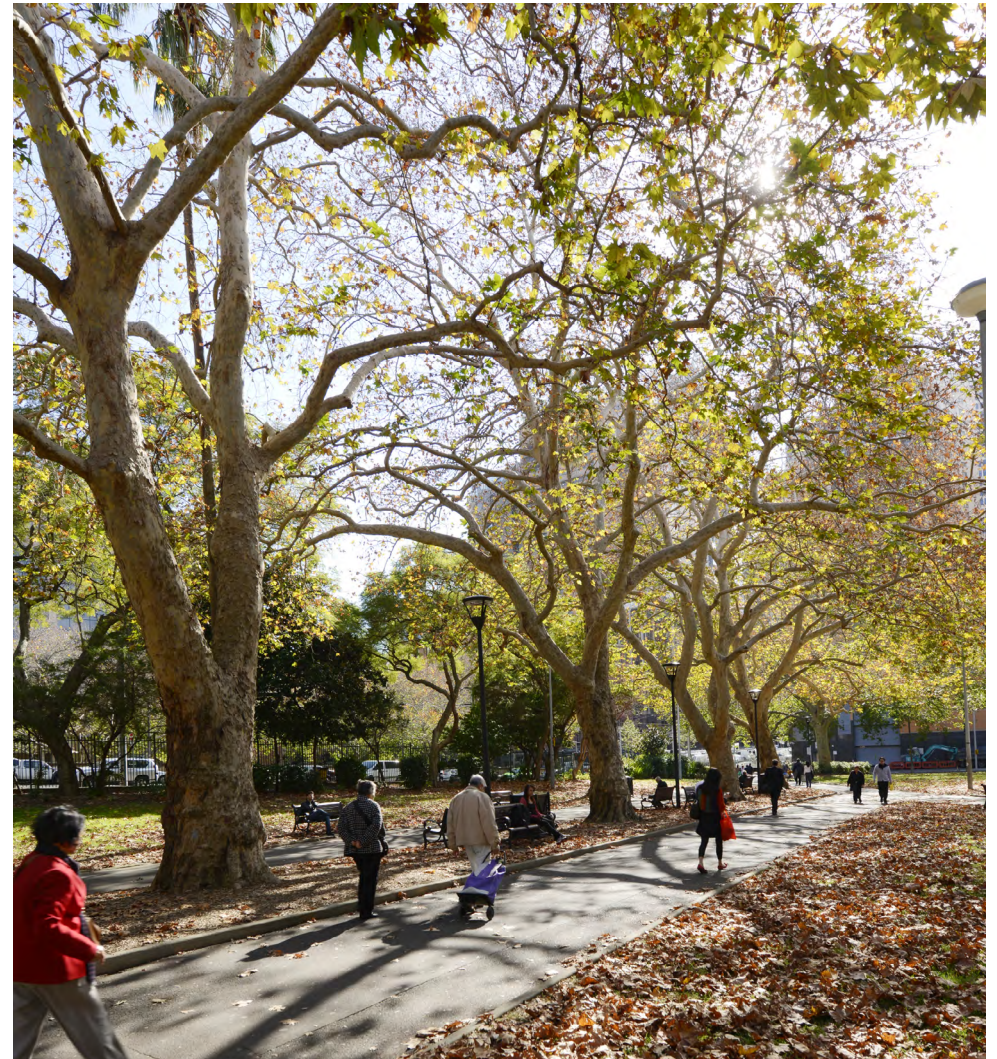
Trees

The park is notable for what the City's *Register of Significant Trees* (2013) describes as 'one of the City's most spectacular single row plantations of London Planes'. These trees are located along the park's western avenue, the primary path through the park and one of the key pedestrian routes from Central Station to Chinatown.

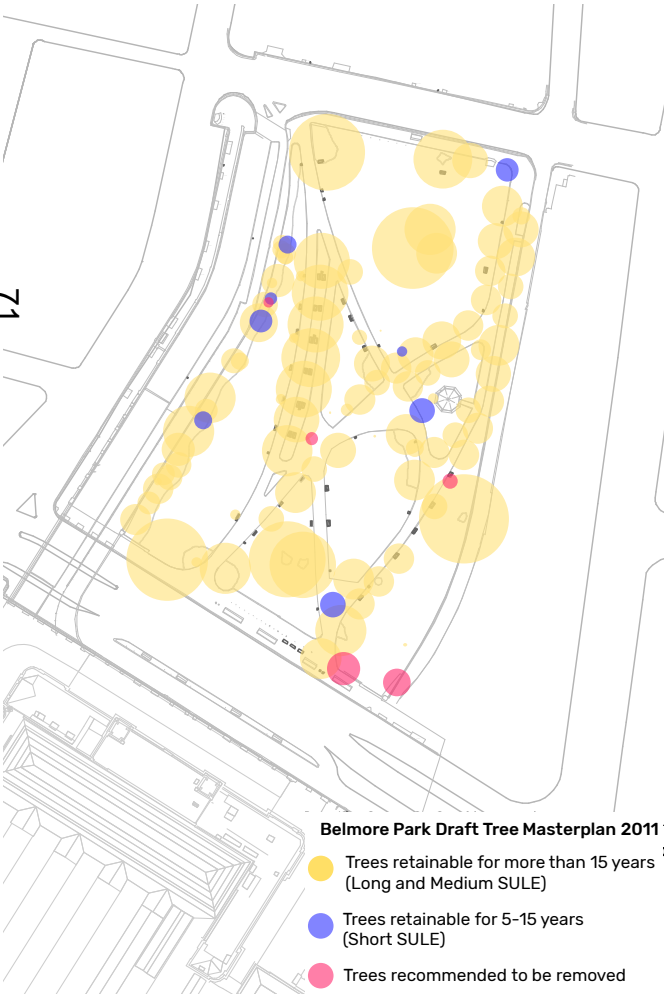
The park's four large Moreton Bay Fig trees are believed to be survivors from the earlier nineteenth century park (*Register of Significant Trees*, 2013). In summer, the mature tree canopies provide shade and a cool respite from the surrounding urban areas. In winter, the dense evergreen mature trees can make parts of the park appear dark and limit usability.

Park elements and finishes

Park elements and finishes are of varying condition. There are two different types of light poles providing reasonable facial recognition. In some areas, the asphalt paths need repair and the stone edges to the paths are broken and crumbling. The park's main architectural feature, the bandstand, is inaccessible to the public. The Men's Toilets, located against the bridge abutment wall, is also closed to the public. The fence on the western side cuts off the Pitt Street ramp (and connection to Central) from the Park.



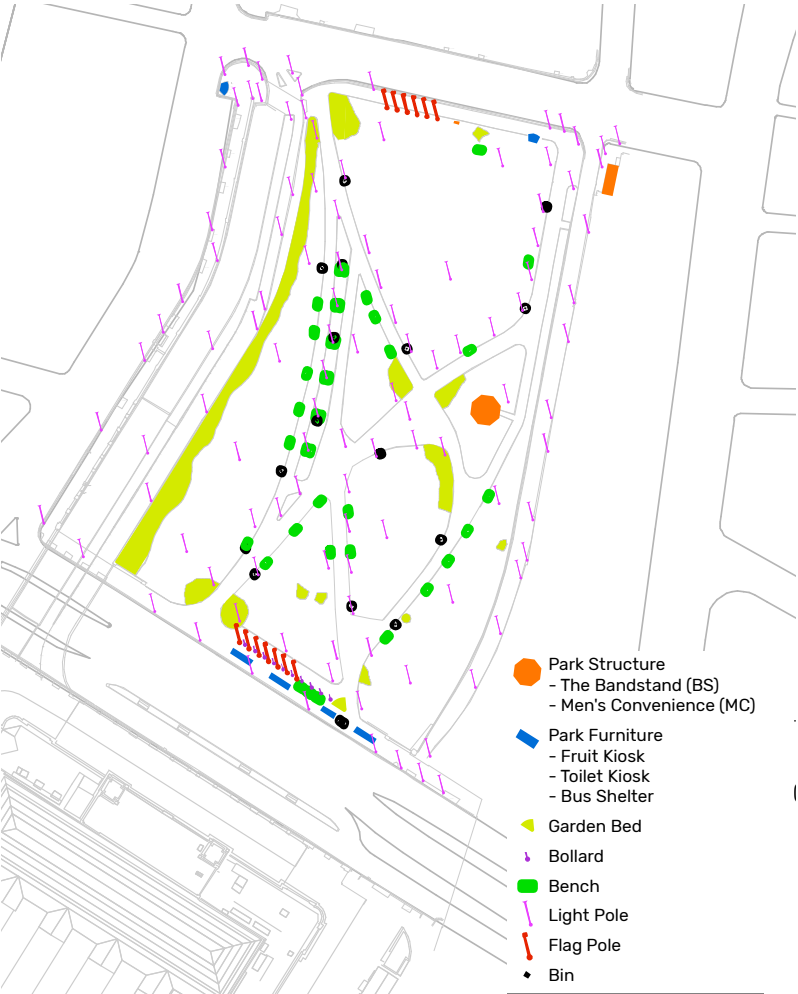
Tree assessment



Tree character



Existing park elements



Belmore Park upgrade (cont')

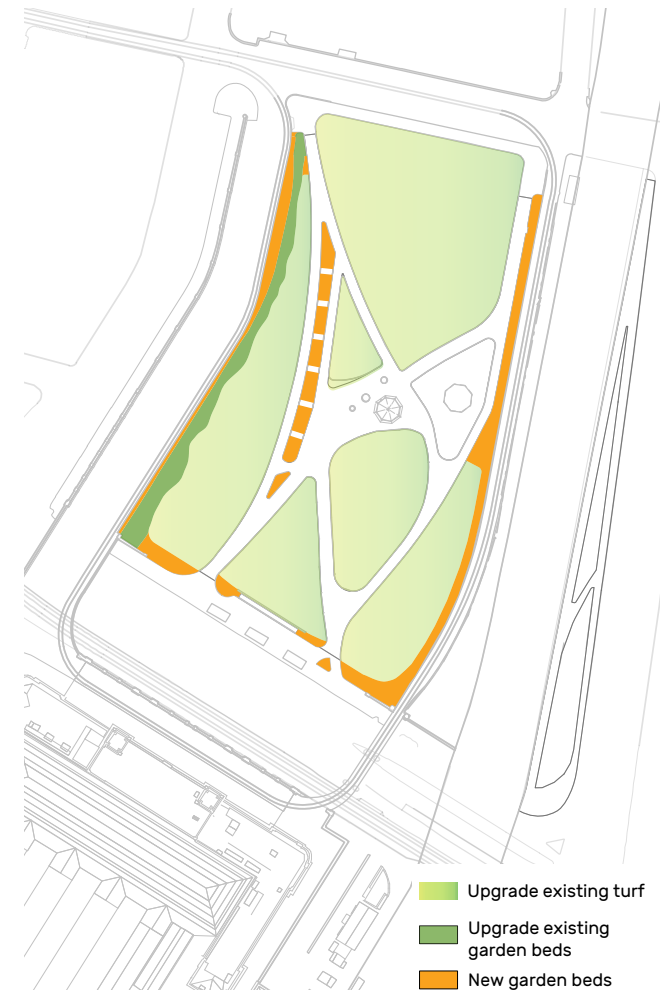
Design Principles

1. Retain and enhance the existing park character.
2. Respect and reveal the parks heritage.
3. Improve access and permeability.
4. Activate the open space and increase recreation opportunities.
5. Improve sight lines and passive surveillance.
6. Use simple, robust, and high-quality materials.
7. Facilitate event uses and meet resident, worker, and visitor needs; and
8. Improve the parks environmental performance and sustainability.

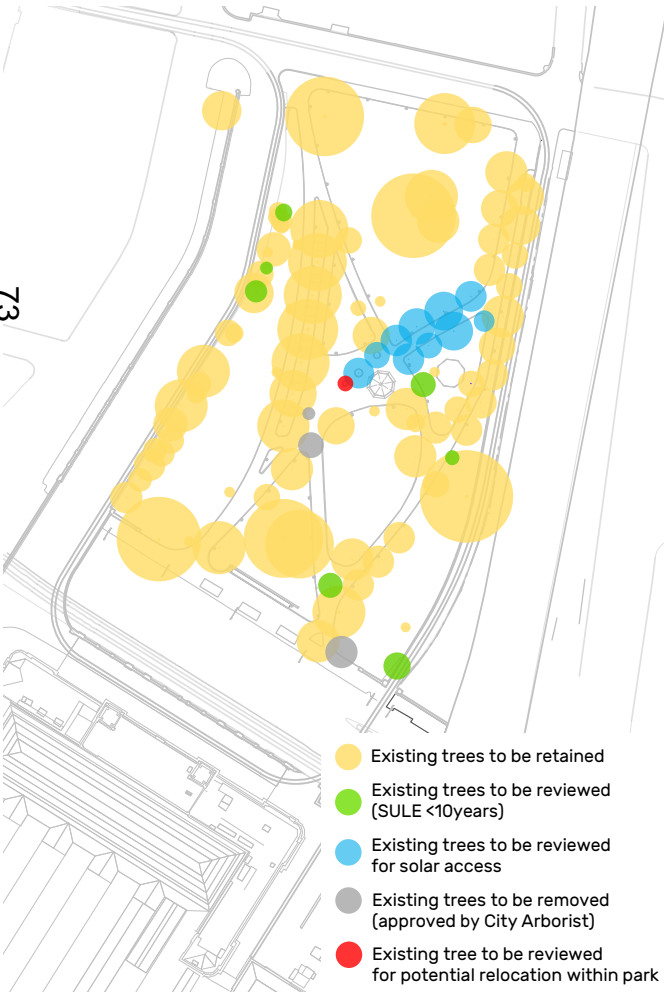
De-clutter park



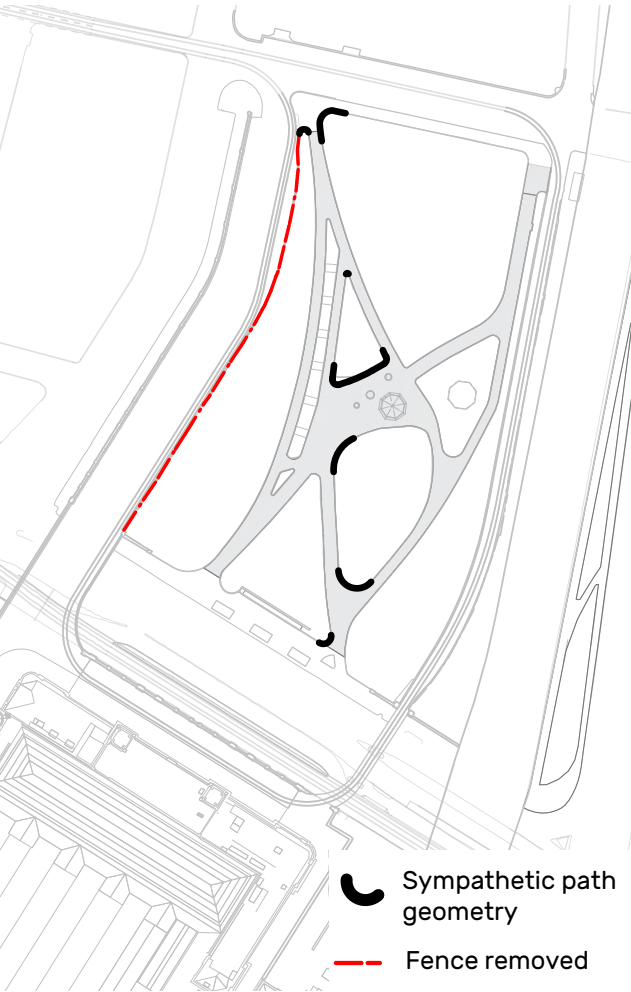
Landscape improvements



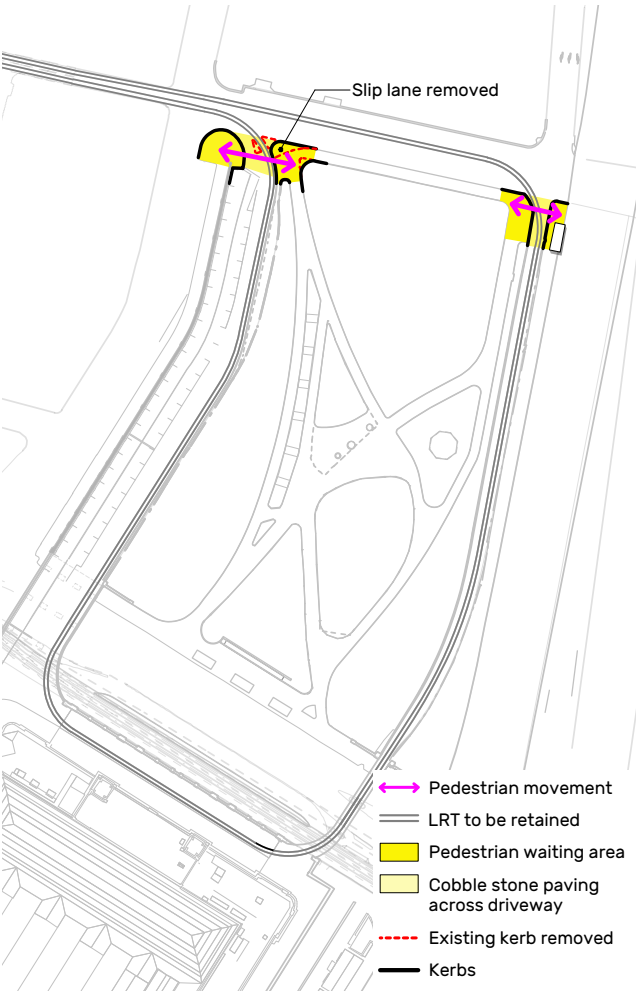
Review trees



Edges and details

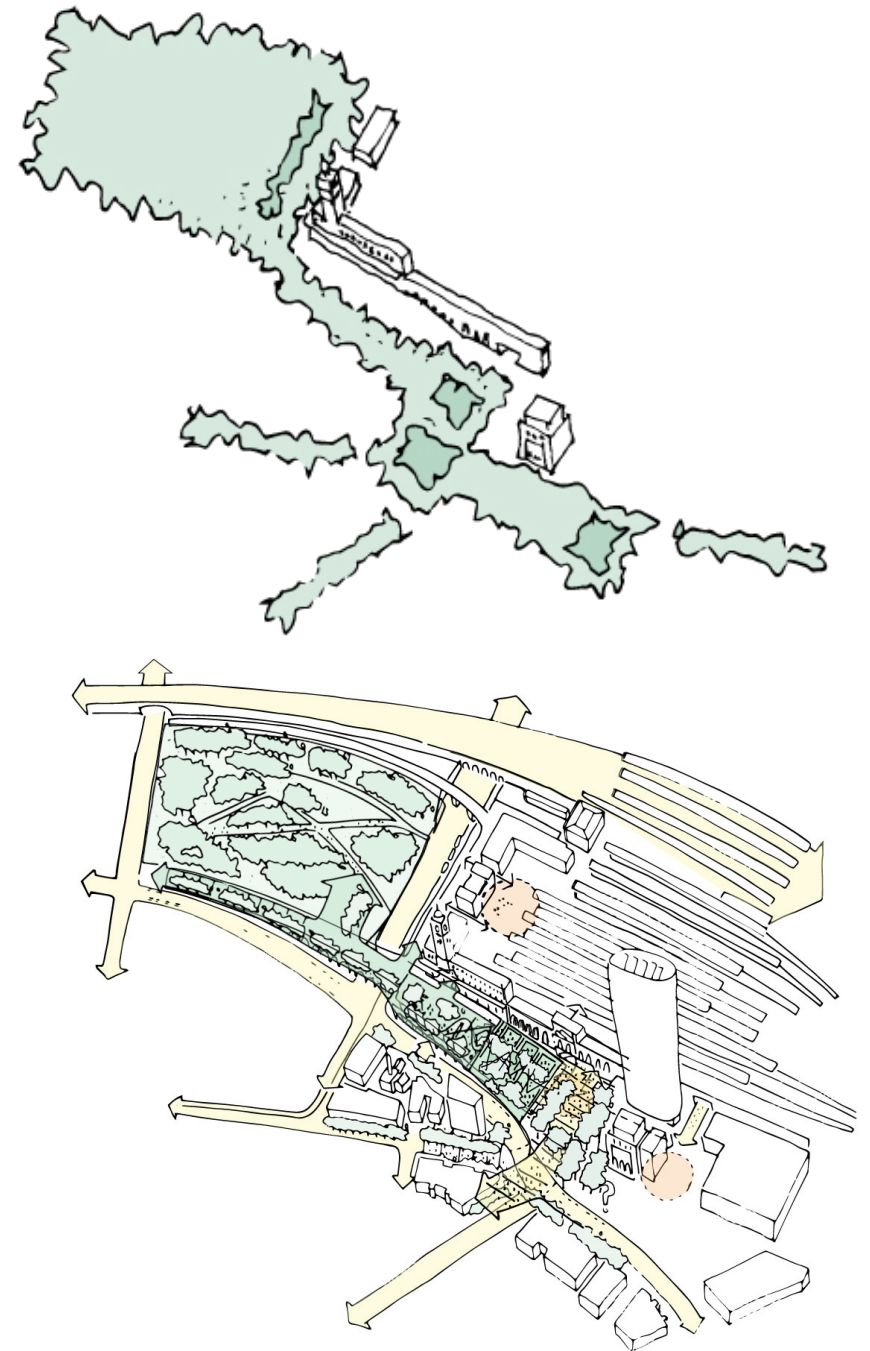


Hay Street corners



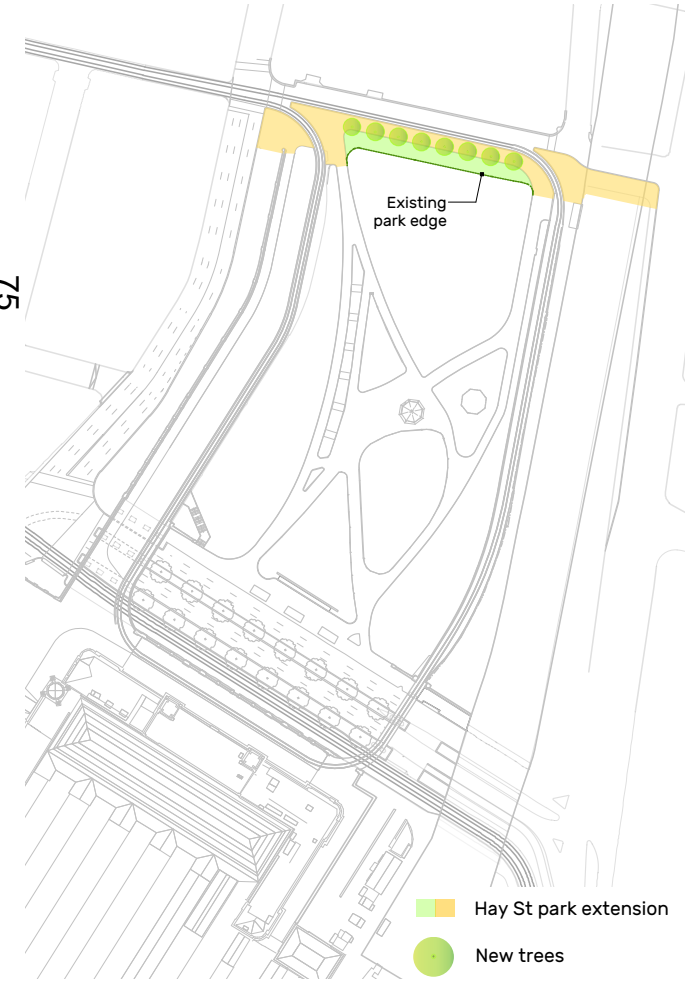
Extend park edges

1. Removal of the western boundary fence, understorey and improve interface with the Park creating a new urban landscape park condition
2. Improve the north western Hay Street entrance and street frontage (including removal of the flag poles).
3. Extend Park edge to the north along Hay Street and improve pedestrian connection and amenity.
4. Improve the south-western Eddy Avenue entry explore opportunities to create a link to the Pitt Street ramp from Eddy Avenue.
5. Rationalise the bus shelters and improve the Eddy Avenue footpath.
6. Improve Belmore Park's connection with Central Station across Eddy Avenue.

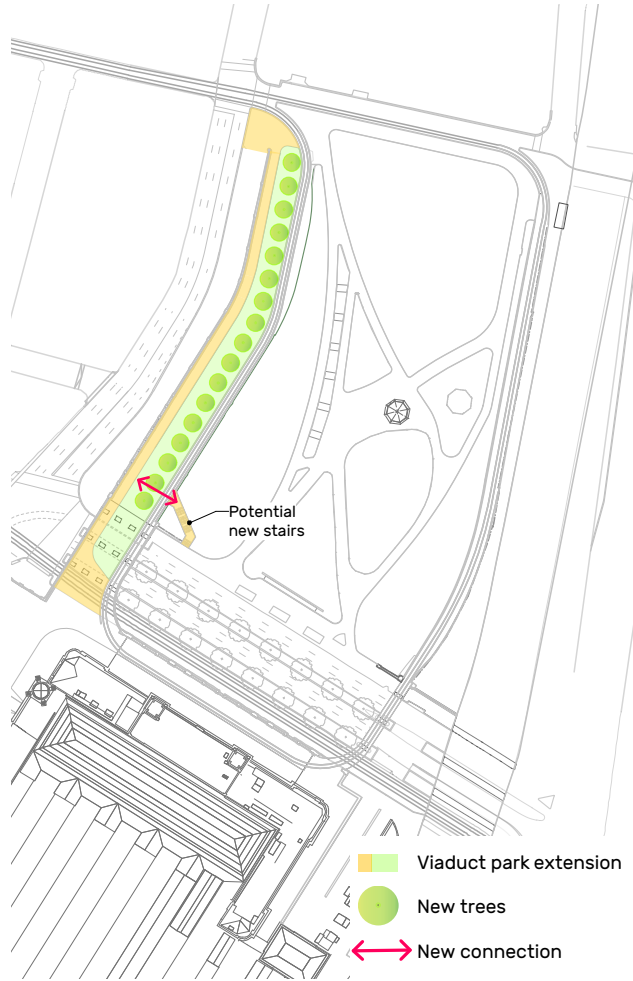


Belmore Park linked to a green Central Square (Hassell Studio)

Hay Street



Pitt Street (Railway Colonnade Drive)



Eddy Avenue

