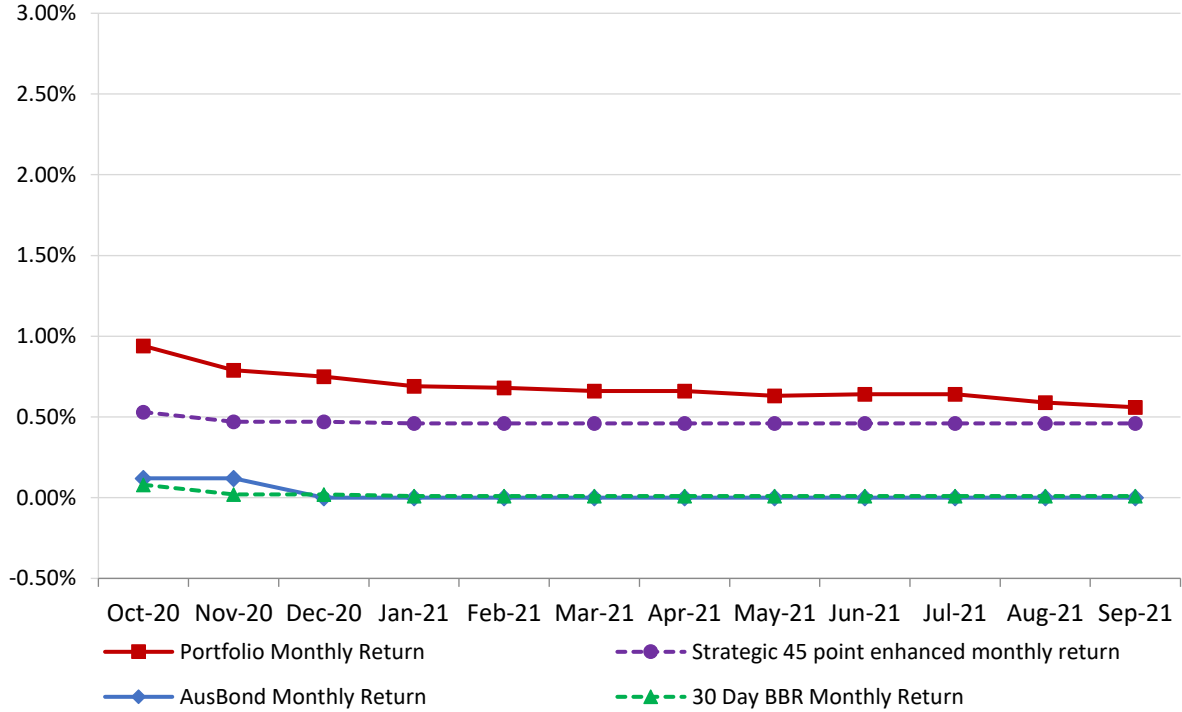


# **Attachment B**

**Investment Performance  
as at 30 September 2021**

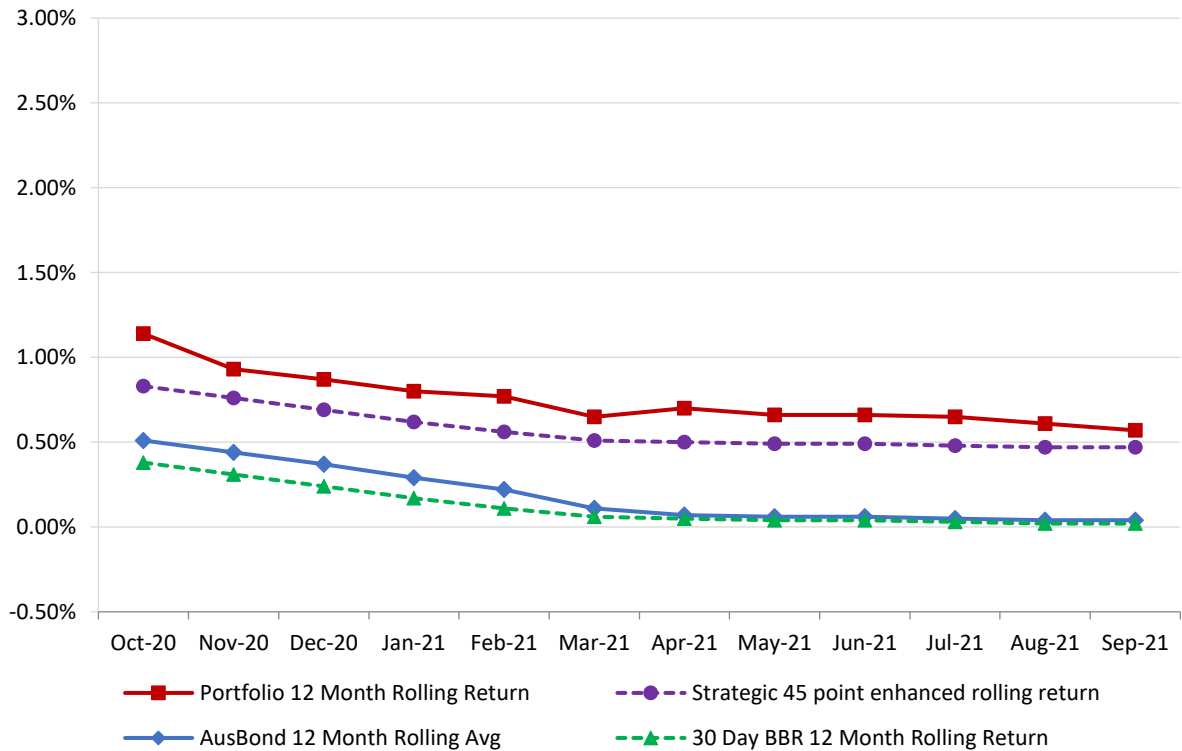
## Monthly Results

Actual Portfolio vs Strategic Enhanced Benchmark vs AusBond Benchmark vs 30 Day BBR Benchmark  
September 2021

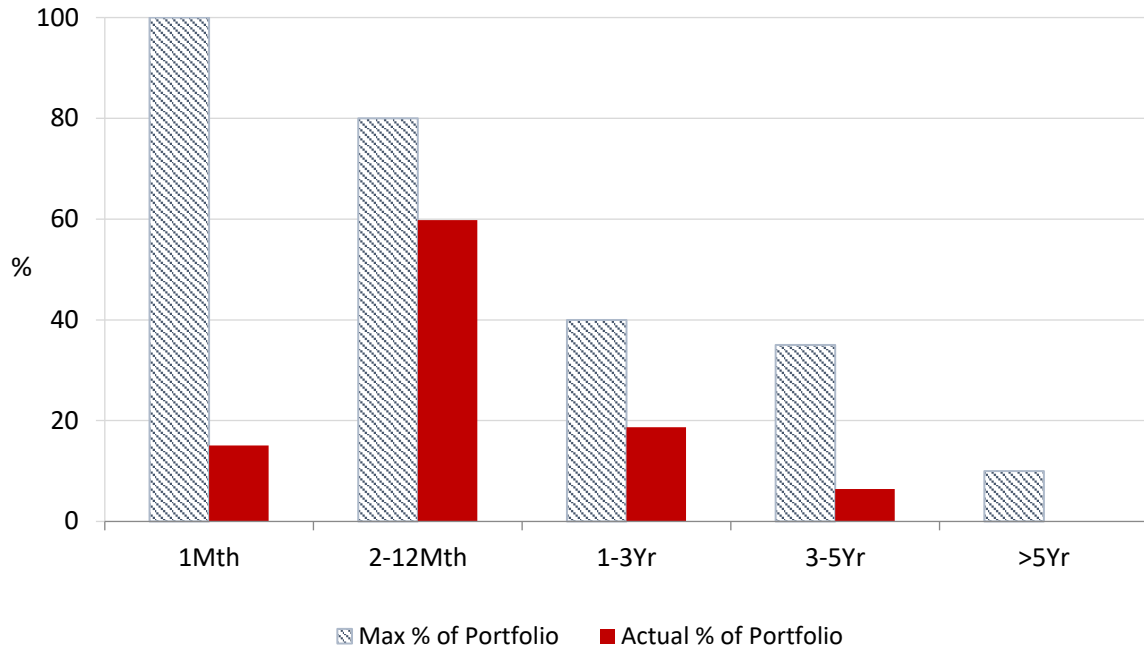


## 12 Month Rolling Averages

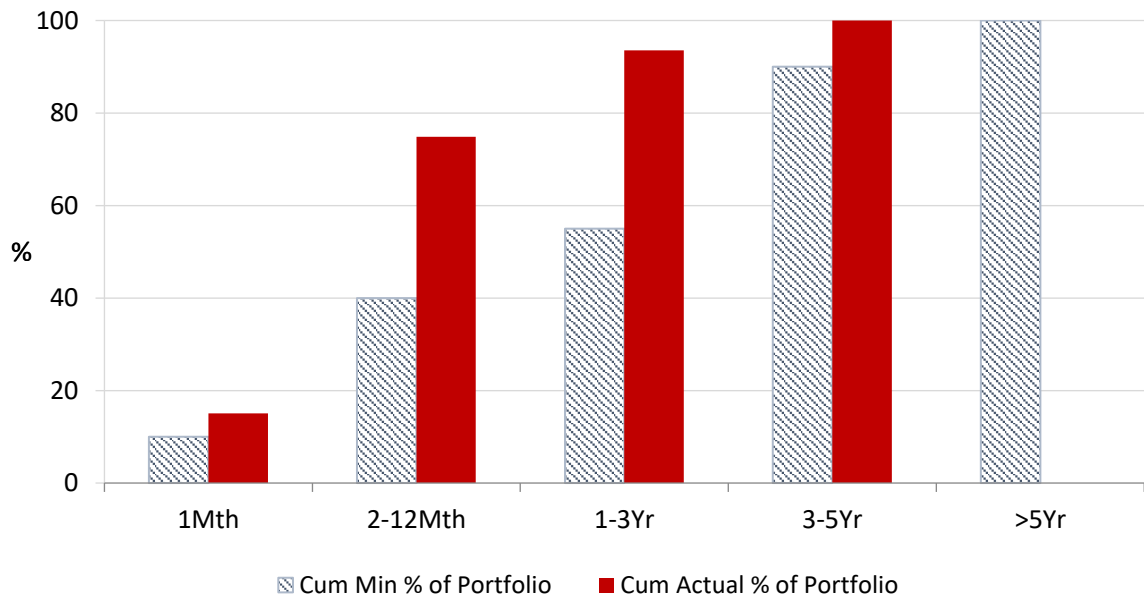
Actual Portfolio vs Strategic Enhanced Benchmark vs AusBond Benchmark vs 30 Day BBR Benchmark  
September 2021



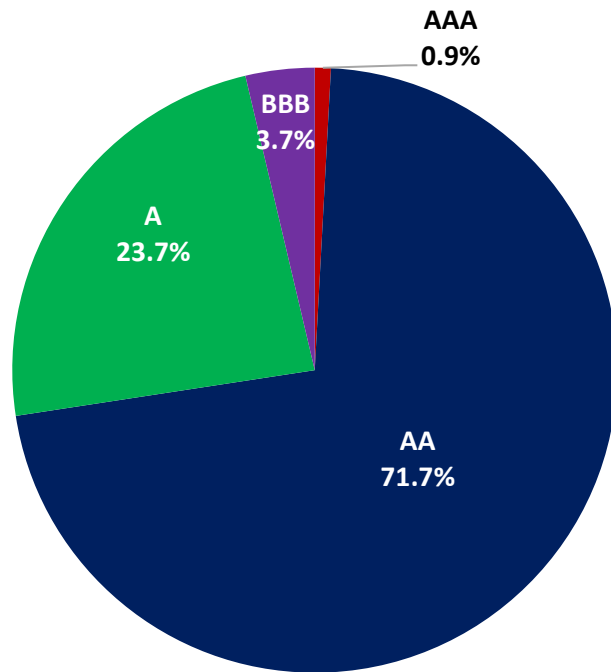
**Portfolio Liquidity - Maximum Allowances as at 30 September 2021**



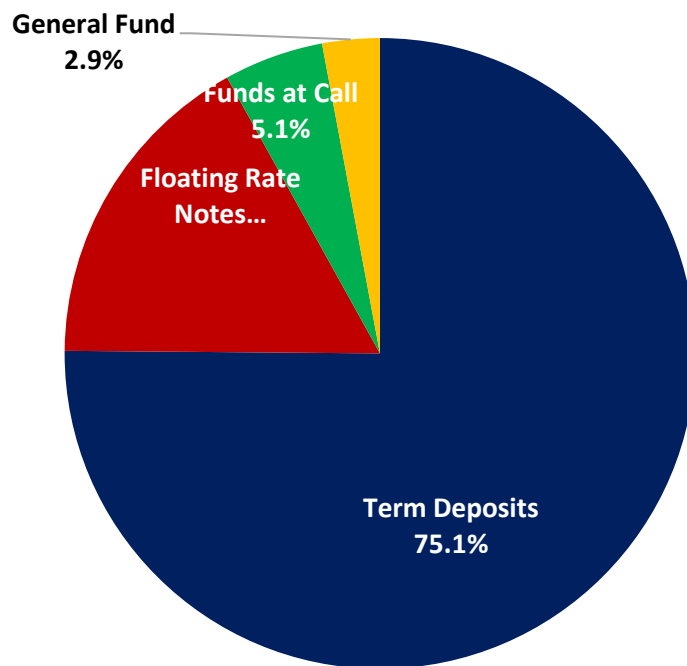
**Portfolio Liquidity - Minimum Allocations as at 30 September 2021**



### Risk Profile as at 30 September 2021



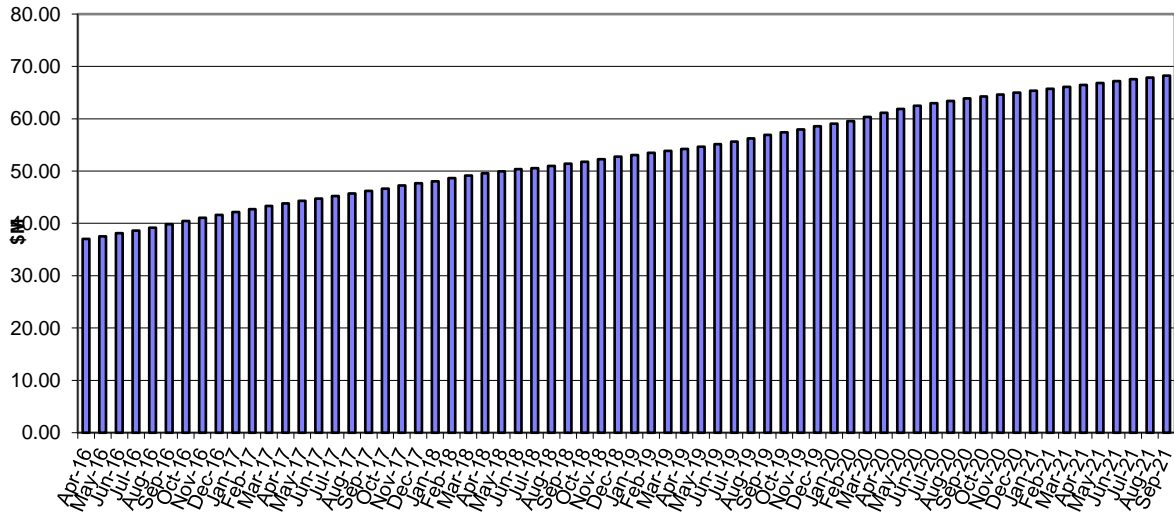
### Investment Product Profile as at 30 September 2021



**INVESTMENT AND CASH DISTRIBUTION BY FINANCIAL INSTITUTION**  
as at 30 September 2021

Institution Category	Financial Institution	Amount \$M	Financial Inst. %	Institution Cat. %
Australian Big 4 Bank (and related institutions)	ANZ Bank	18.0	2.5	
	Commonwealth Bank	225.3	31.6	
	National Aust Bank	70.7	9.9	
	Westpac Banking Corporation	192.3	27.0	
<b>Big 4 Total</b>		<b>506.3</b>		<b>71.0</b>
Other Australian ADIs and Australian subsidiaries of foreign institutions	Bank Australia Limited	5.0	0.7	
	Bank of China	4.5	0.6	
	Bank of Queensland	34.0	4.8	
	Bendigo & Adelaide Bank	50.0	7.0	
	Great Southern Bank (formerly Credit Union Australia)	4.3	0.6	
	IMB	10.0	1.4	
	ME Bank	16.0	2.2	
	Suncorp Bank	18.4	2.6	
	Macquarie Bank Ltd	49.9	7.0	
	Northern Territory Treasury Corporation	10.0	1.4	
	Newcastle Permanent Building Society	5.0	0.7	
<b>Other ADI Total</b>		<b>207.1</b>		<b>29.0</b>
<b>Grand Total</b>		<b>713.4</b>	<b>100.0</b>	<b>100.0</b>

### Cumulative Outperformance over AusBond Benchmark - 2015-2021



### Cumulative Outperformance over 30 Day BBR Benchmark - 2015-2021

