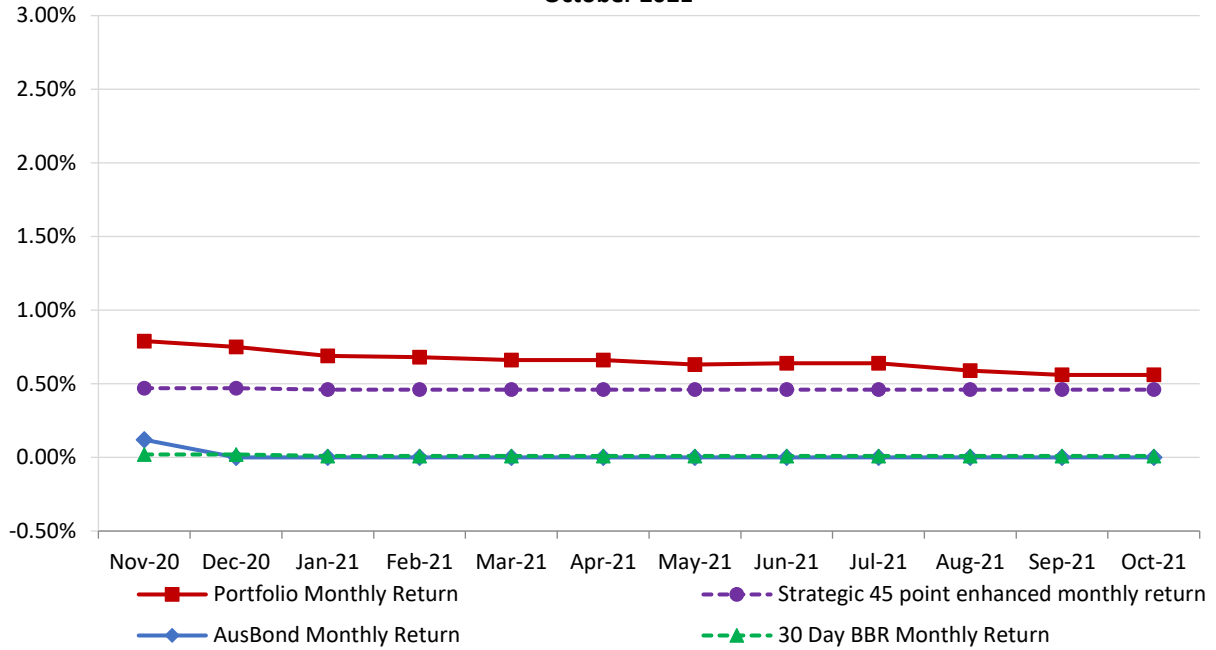


Attachment B

**Investment Performance as at 31 October
2021**

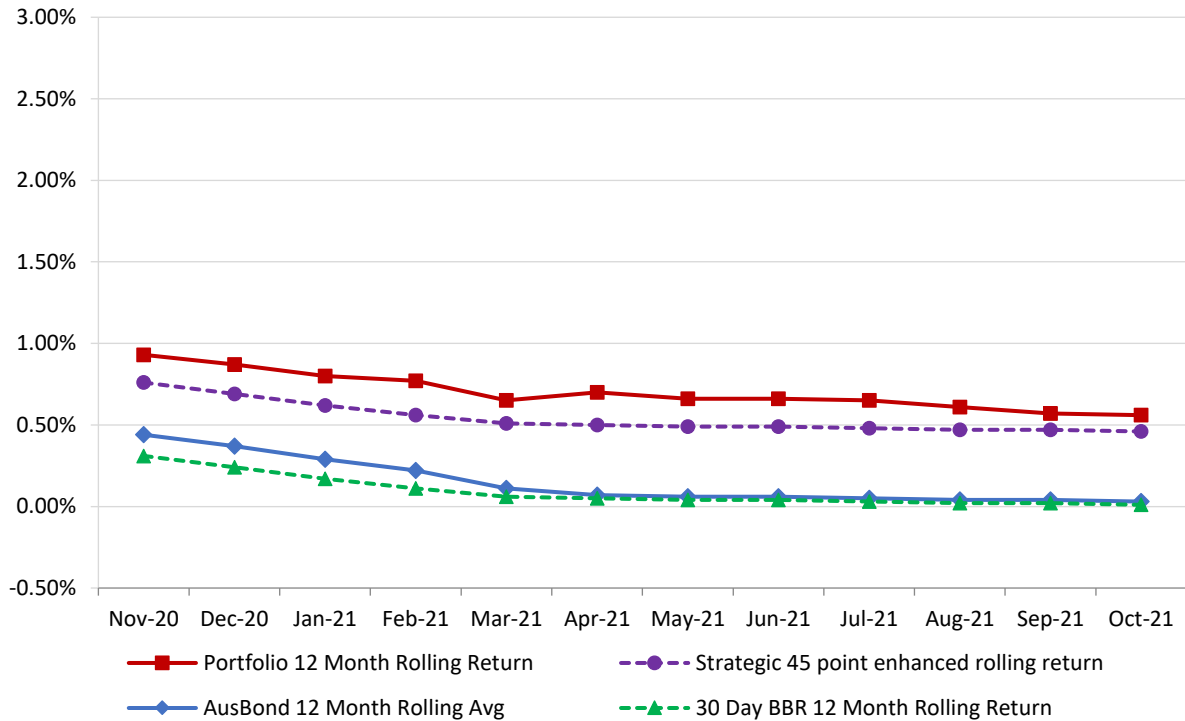
Monthly Results

Actual Portfolio vs Strategic Enhanced Benchmark vs AusBond Benchmark vs 30 Day BBR Benchmark
October 2021

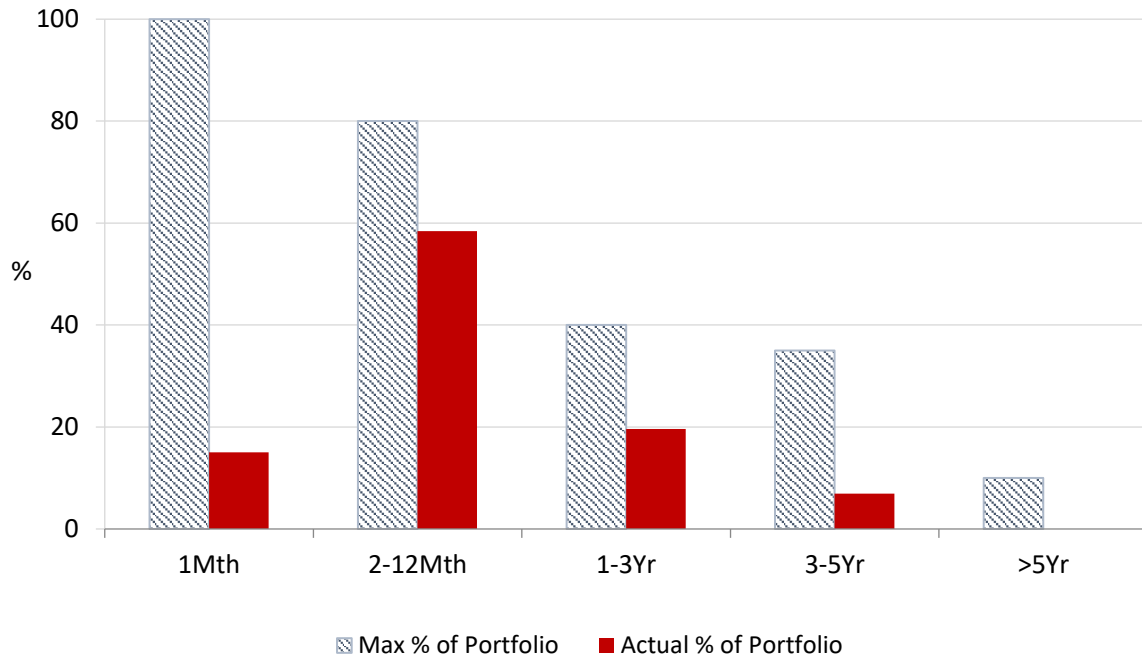


12 Month Rolling Averages

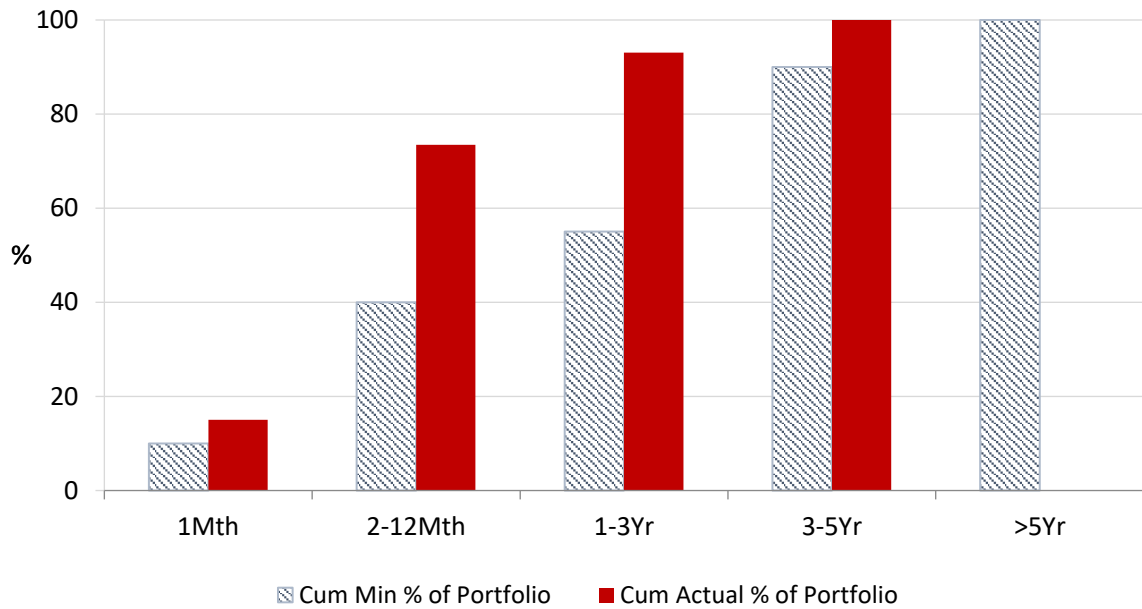
Actual Portfolio vs Strategic Enhanced Benchmark vs AusBond Benchmark vs 30 Day BBR Benchmark
October 2021



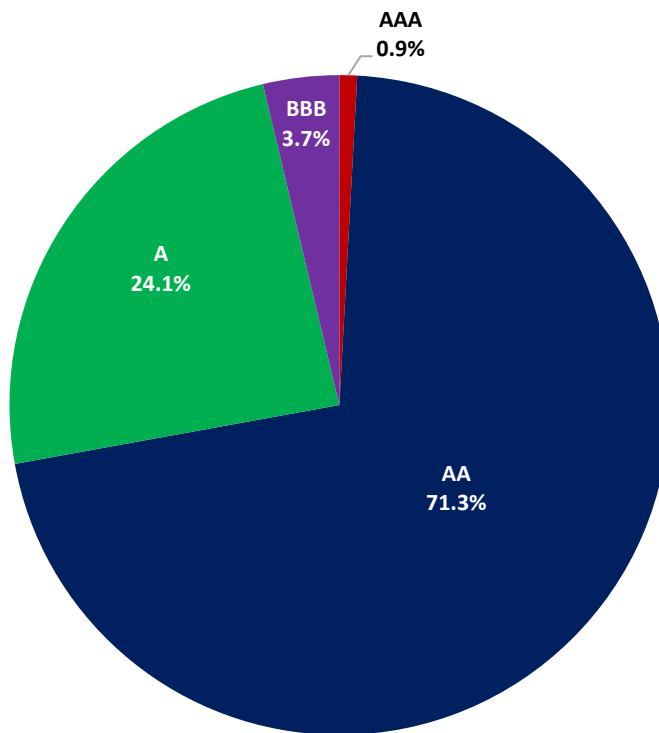
Portfolio Liquidity - Maximum Allowances as at 31 October 2021



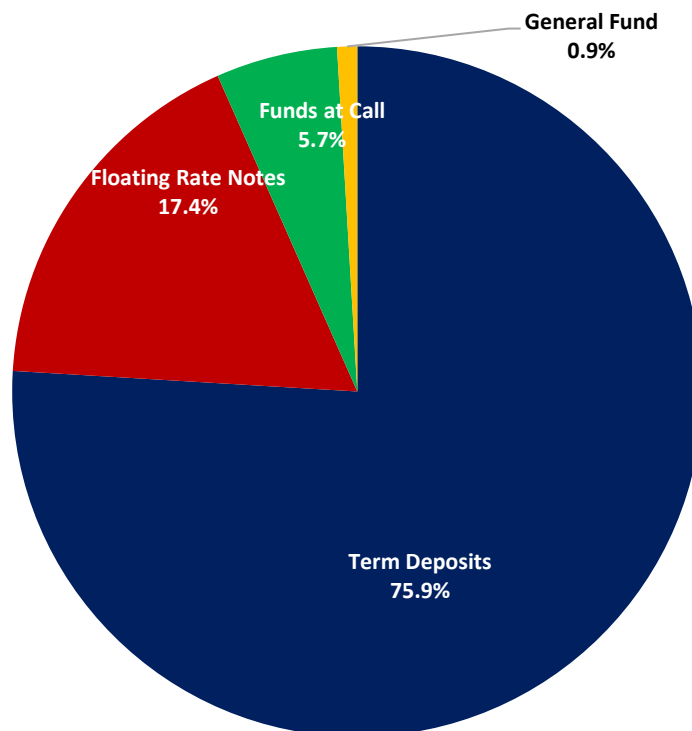
Portfolio Liquidity - Minimum Allocations as at 31 October 2021



Risk Profile as at 31 October 2021



Investment Product Profile as at 31 October 2021

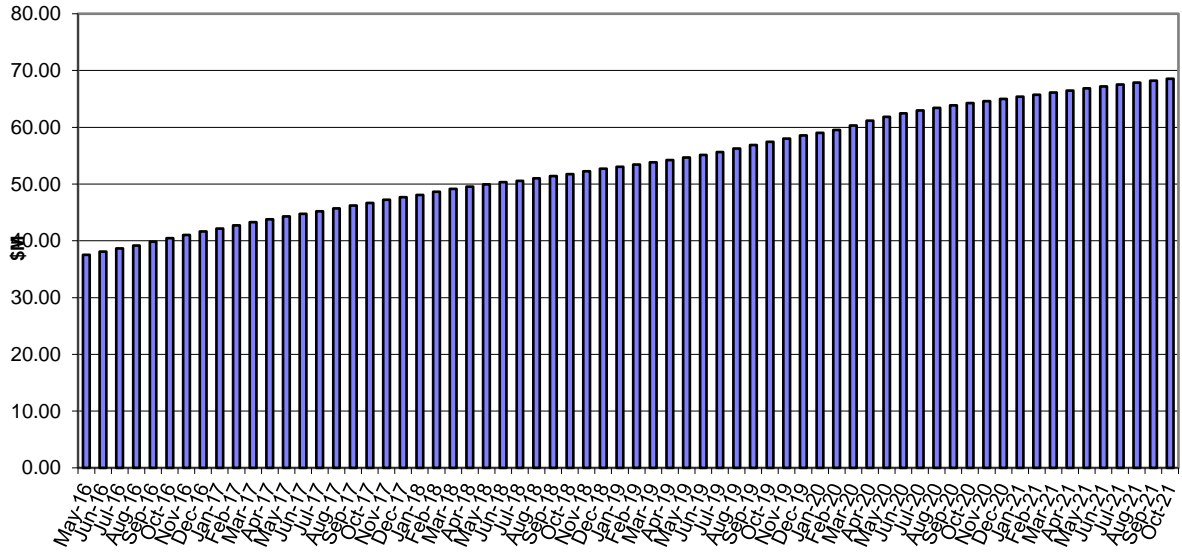


INVESTMENT AND CASH DISTRIBUTION BY FINANCIAL INSTITUTION

as at 31 October 2021

| Institution Category | Financial Institution | Amount \$M | Financial Inst. % | Institution Cat. % |
|---|---|---------------|-------------------------|--------------------------|
| Australian Big 4 Bank (and related institutions) | ANZ Bank | 18.0 | 2.6 | |
| | Commonwealth Bank | 218.3 | 30.9 | |
| | National Aust Bank | 70.7 | 10.0 | |
| | Westpac Banking Corporation | 190.6 | 27.0 | |
| Big 4 Total | | 497.6 | | 70.5 |
| Other Australian ADIs and Australian subsidiaries of foreign institutions | Bank Australia Limited | 5.0 | 0.7 | |
| | Bank of China | 4.5 | 0.6 | |
| | Bank of Queensland | 42.0 | 6.0 | |
| | Bendigo & Adelaide Bank | 40.0 | 5.7 | |
| | Great Southern Bank (formerly Credit Union Australia) | 4.3 | 0.6 | |
| | IMB | 10.0 | 1.4 | |
| | ME Bank | 16.0 | 2.3 | |
| | Suncorp Bank | 18.4 | 2.6 | |
| | Macquarie Bank Ltd | 52.9 | 7.5 | |
| | Northern Territory Treasury Corporation | 10.0 | 1.4 | |
| Newcastle Permanent Building Society | 5.0 | 0.7 | | |
| Other ADI Total | | 208.1 | | 29.5 |
| Grand Total | | 705.7 | 100.0 | 100.0 |

Cumulative Outperformance over AusBond Benchmark - 2015-2021



Cumulative Outperformance over 30 Day BBR Benchmark - 2015-2021

