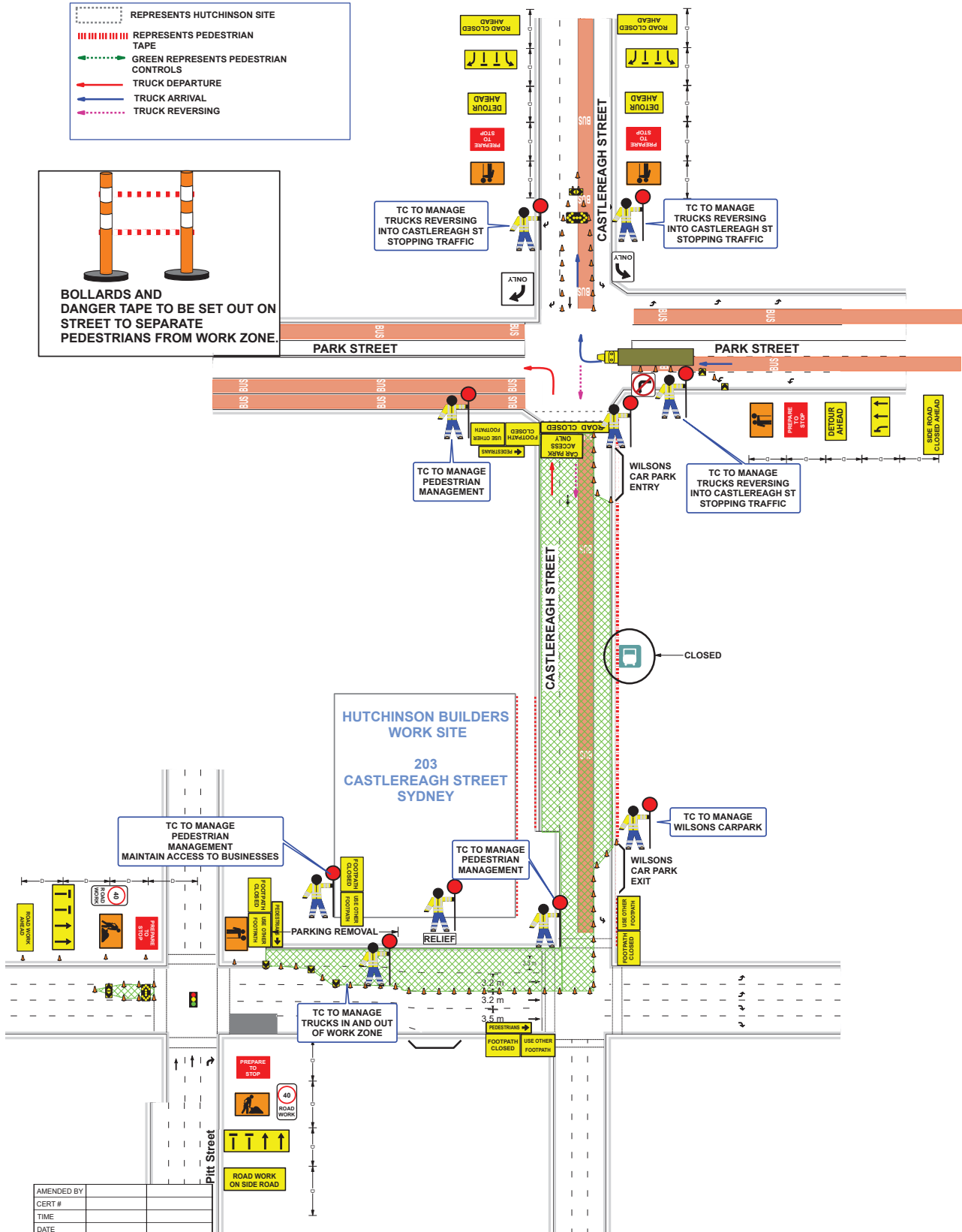




- REPRESENTS HUTCHINSON SITE
- REPRESENTS PEDESTRIAN TAPE
- GREEN REPRESENTS PEDESTRIAN CONTROLS
- TRUCK DEPARTURE
- TRUCK ARRIVAL
- TRUCK REVERSING



| | |
|------------|--|
| AMENDED BY | |
| CERT # | |
| TIME | |
| DATE | |

Date: 10/11/2021 Author: Aleksandra Moisejenkova Project: CASTLEREAGH ST, SYDNEY
 Drawn: Aleksandra Moisejenkova
 PROJECT: TCT0002510
 DRAWING NOT TO SCALE
 THIS DOCUMENT IS THE PROPERTY OF COMMERCIAL TC PTY LTD. IT IS TO BE USED ONLY FOR THE PROJECT AND ACCURACY OF THIS TCP.
 COMMERCIAL TC BEARS NO LIABILITY FOR THE SET UP AND ACCURACY OF THIS TCP.
 RMA Accredited Traffic Controllers will adhere to this TCP according to TCW Manual V8 and relevant SWMS.
 Signs and Devices are to be placed in accordance with the TCP. Modification may be made by persons holding a RMA "Design and Audit" Qualification only.
 All signs and devices used must comply with Australian Standards AS1742.3.
 This document is copyright property of Commercial TC PTY LTD. This drawing shall only be used for the purpose for which it is intended.

TABLE 4.2
VALUE OF DIMENSION D

| Speed of traffic km/h | Dimension D m |
|--------------------------|------------------------------------|
| 45 or less | 0 to 5 |
| 46 to 55 | 15 |
| 56 to 65 | 45 |
| Greater than 65 | Equal to speed of traffic, in km/h |