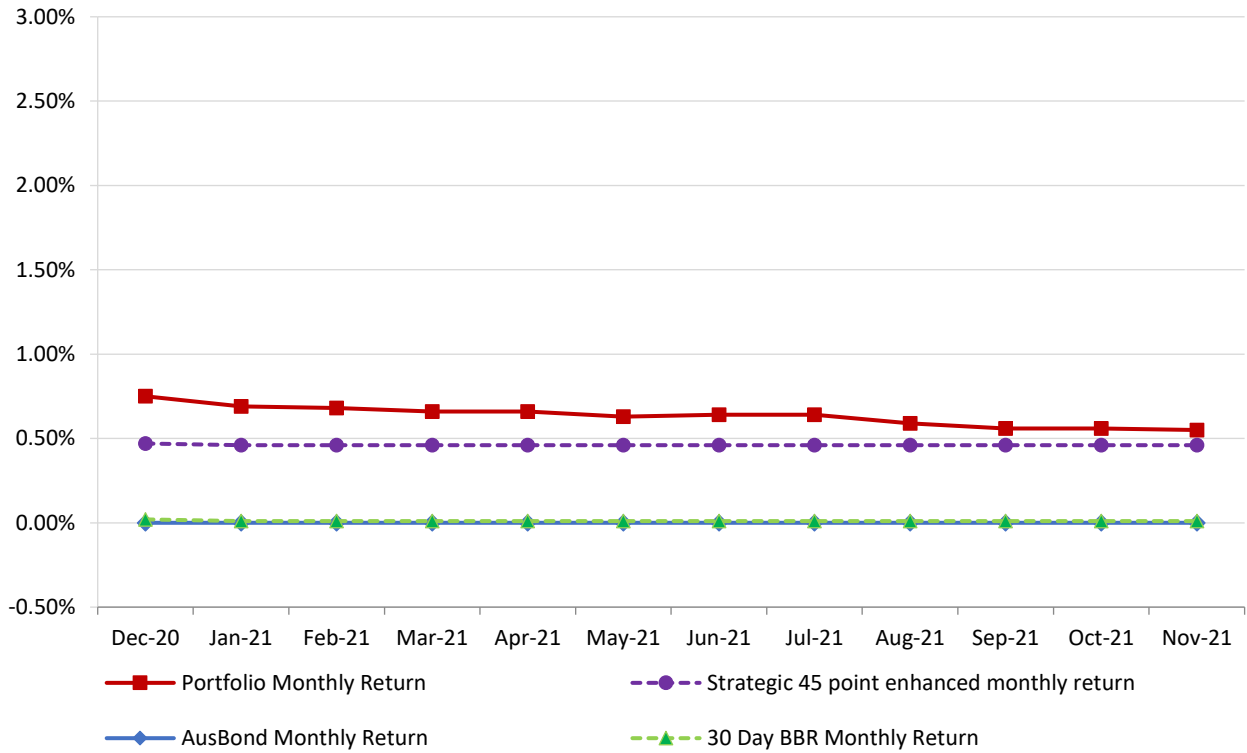


# **Attachment B**

**Investment Performance as at  
30 November 2021**

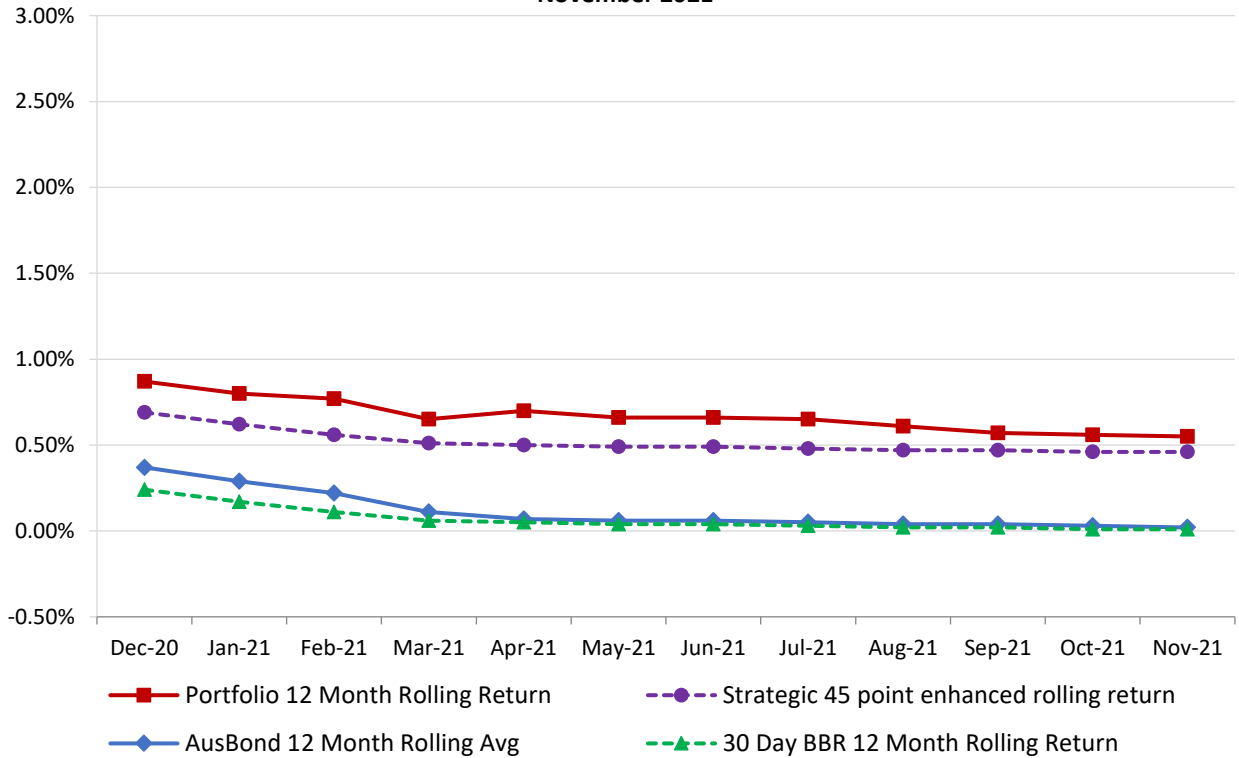
### Monthly Results

Actual Portfolio vs Strategic Enhanced Benchmark vs AusBond Benchmark vs 30 Day BBR Benchmark  
November 2021

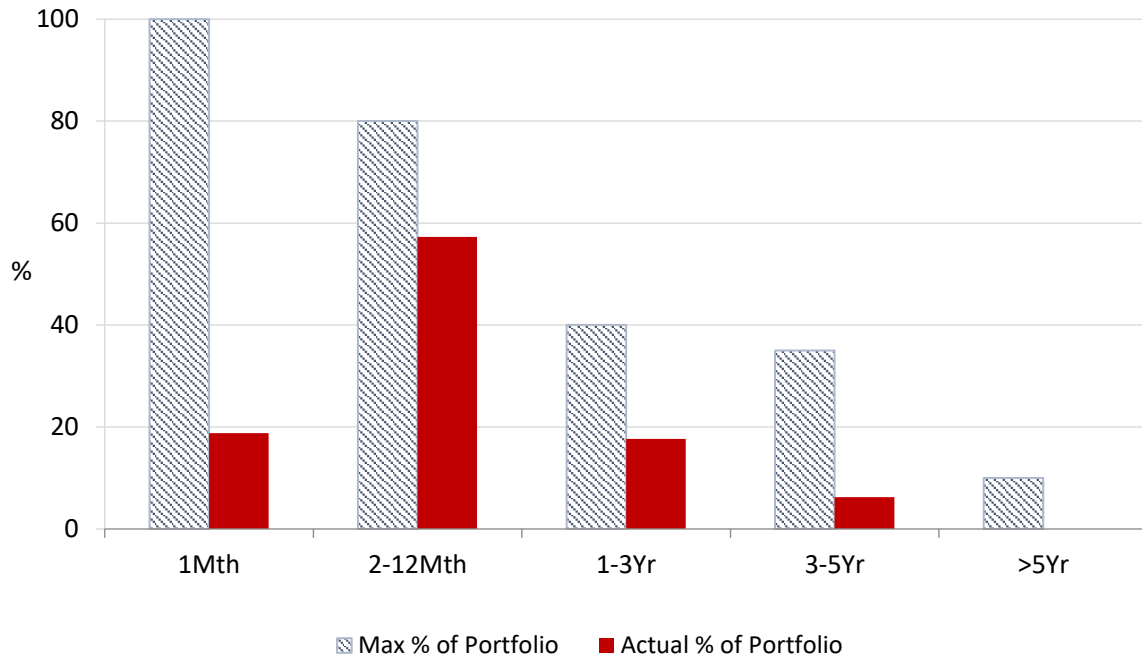


### 12 Month Rolling Averages

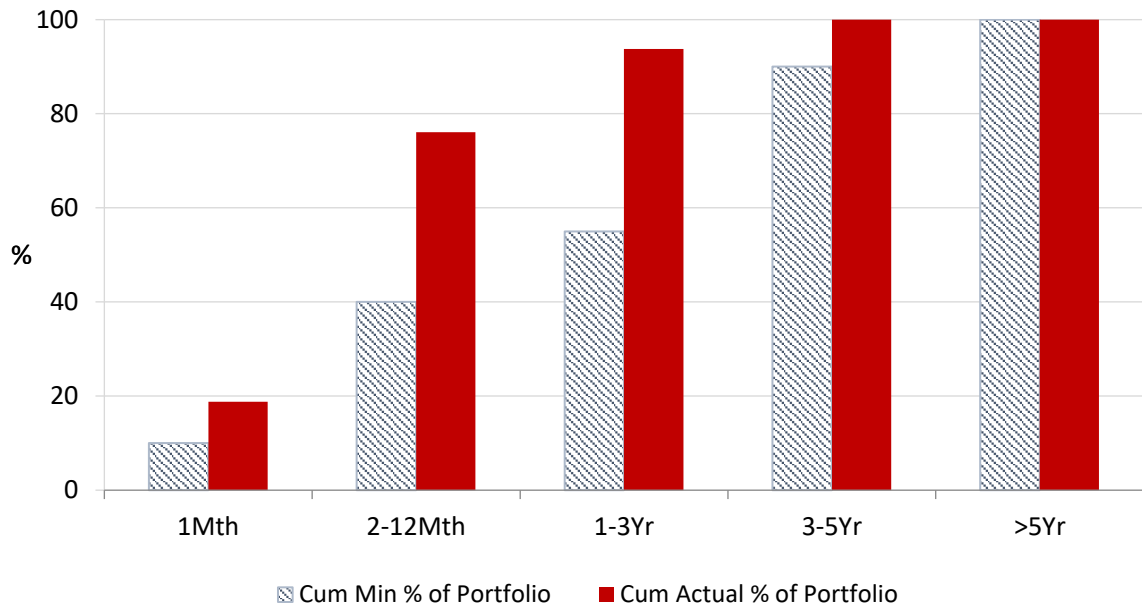
Actual Portfolio vs Strategic Enhanced Benchmark vs AusBond Benchmark vs 30 Day BBR Benchmark  
November 2021



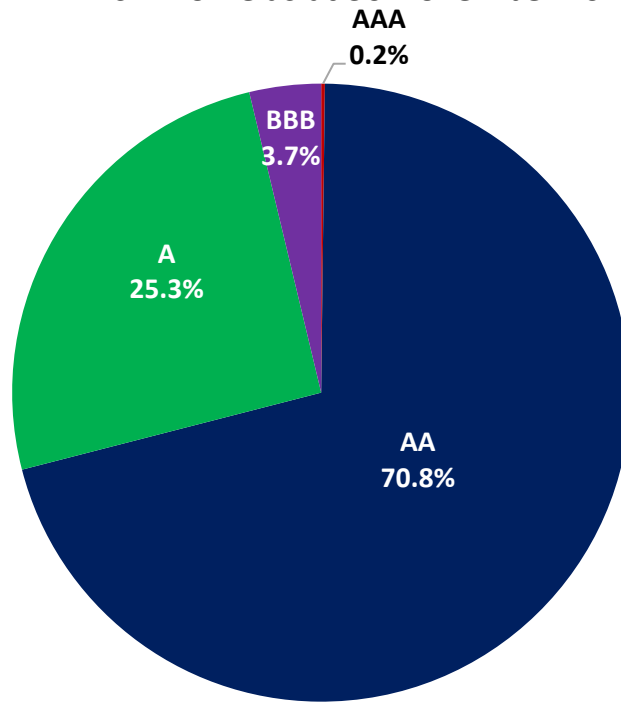
**Portfolio Liquidity - Maximum Allowances as at 30 November 2021**



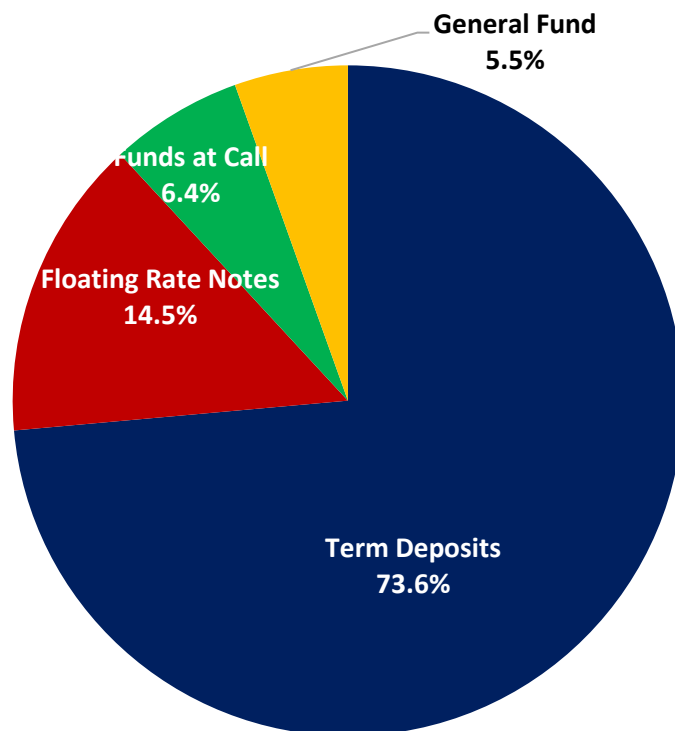
**Portfolio Liquidity - Minimum Allocations as at 30 November 2021**



### Risk Profile as at 30 November 2021



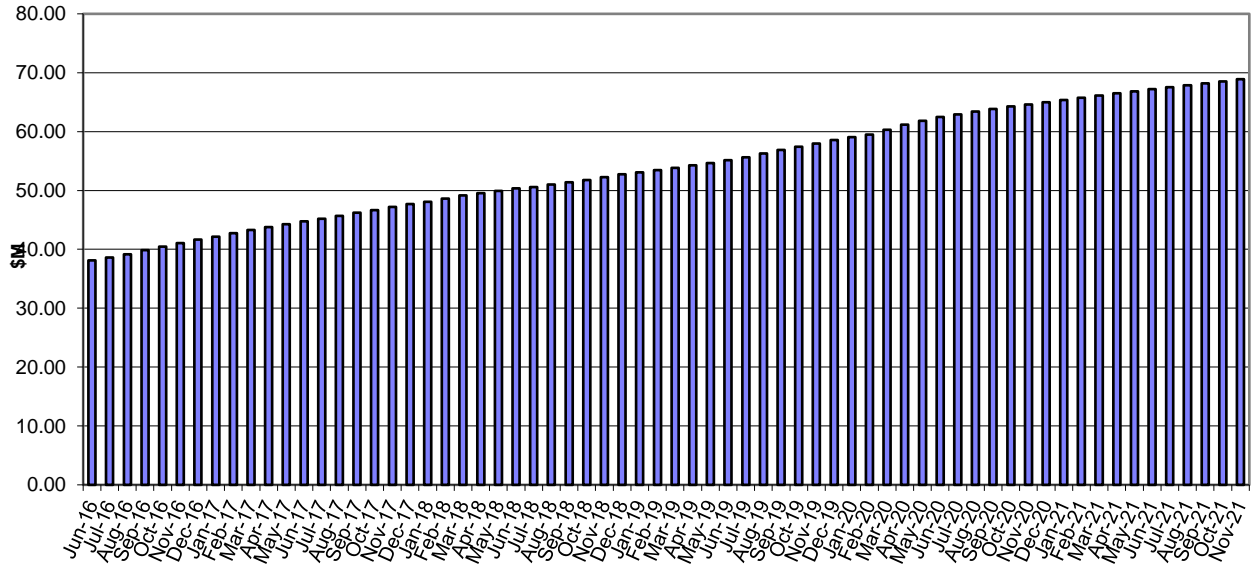
### Investment Product Profile as at 30 November 2021



**INVESTMENT AND CASH DISTRIBUTION BY FINANCIAL INSTITUTION**  
**as at 30 November 2021**

| Institution Category  | Financial Institution                                 | Amount<br>\$M | Financial<br>Inst.<br>% | Institution<br>Cat.<br>% |
|---|---|---------------|-------------------------|--------------------------|
| Australian Big 4 Bank<br>(and related institutions)                             | ANZ Bank  | 18.0          | 2.3                     |                          |
|   | Commonwealth Bank                                     | 223.7         | 28.6                    |                          |
|   | National Aust Bank                                    | 65.7          | 8.4                     |                          |
|   | Westpac Banking Corporation                           | 236.8         | 30.3                    |                          |
| <b>Big 4 Total</b>  |   | <b>544.2</b>  |                         | <b>69.5</b>              |
| Other Australian ADIs<br>and Australian subsidiaries<br>of foreign institutions | Bank Australia Limited                                | 5.0           | 0.6                     |                          |
|   | Bank of Queensland                                    | 57.0          | 7.3                     |                          |
|   | Bendigo & Adelaide Bank                               | 60.0          | 7.7                     |                          |
|   | Great Southern Bank (formerly Credit Union Australia) | 4.3           | 0.5                     |                          |
|   | IMB   | 10.0          | 1.3                     |                          |
|   | ME Bank   | 16.0          | 2.0                     |                          |
|   | Suncorp Bank  | 18.4          | 2.3                     |                          |
|   | Macquarie Bank Ltd                                    | 52.9          | 6.8                     |                          |
|   | Northern Territory Treasury Corporation               | 10.0          | 1.3                     |                          |
| Newcastle Permanent Building Society  | 5.0   | 0.6           |                         |                          |
| <b>Other ADI Total</b>  |   | <b>238.6</b>  |                         | <b>30.5</b>              |
| <b>Grand Total</b>  |   | <b>782.8</b>  | <b>100.0</b>            | <b>100.0</b>             |

### Cumulative Outperformance over AusBond Benchmark - 2015-2021



### Cumulative Outperformance over 30 Day BBR Benchmark - 2015-2021

