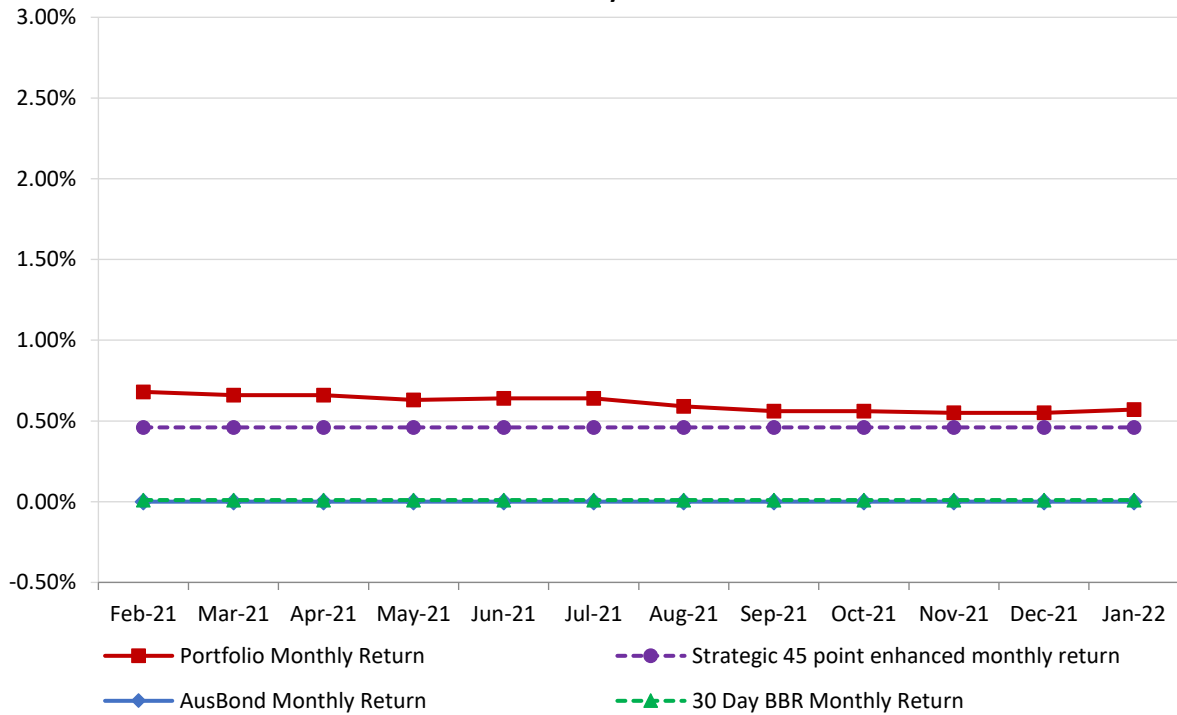


# **Attachment B**

**Investment Performance  
as at 31 January 2022**

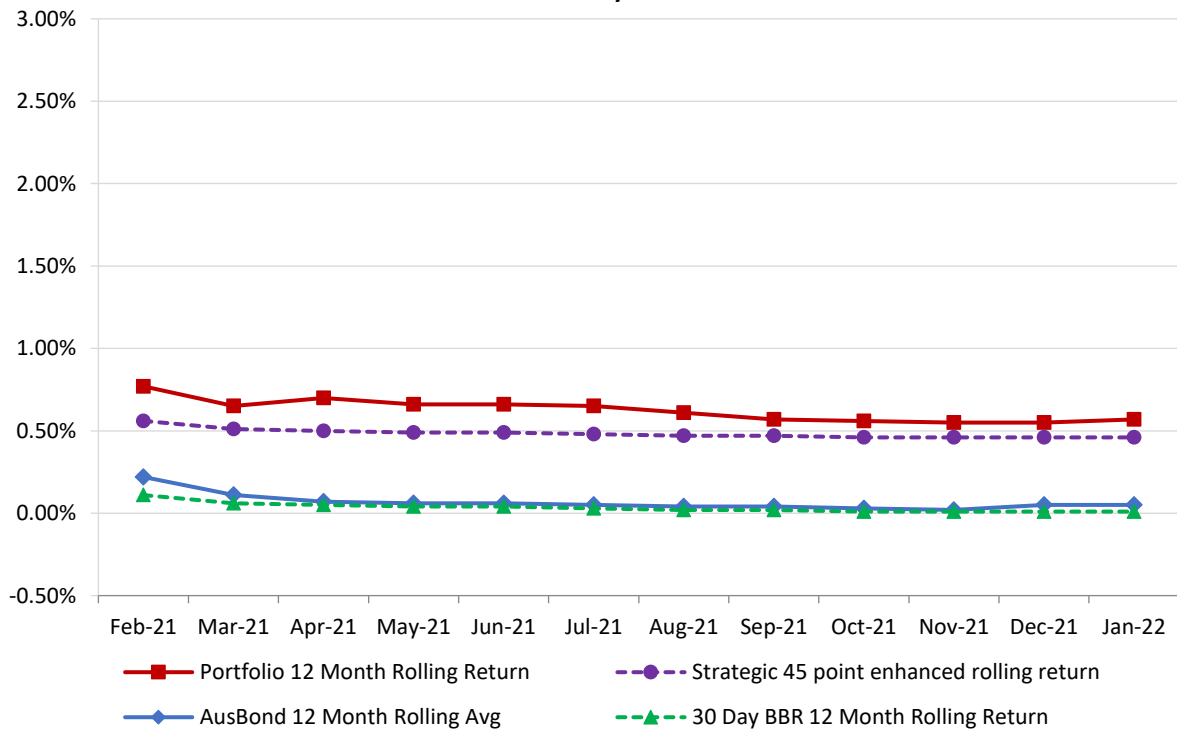
## Monthly Results

Actual Portfolio vs Strategic Enhanced Benchmark vs AusBond Benchmark vs 30 Day BBR Benchmark  
January 2022

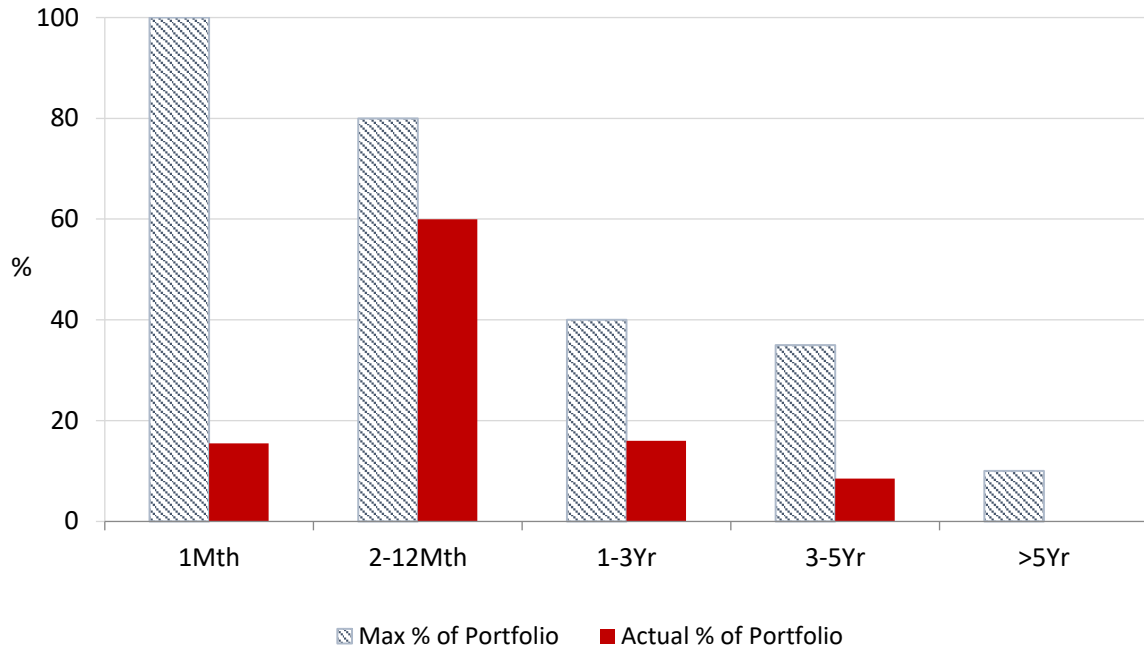


## 12 Month Rolling Averages

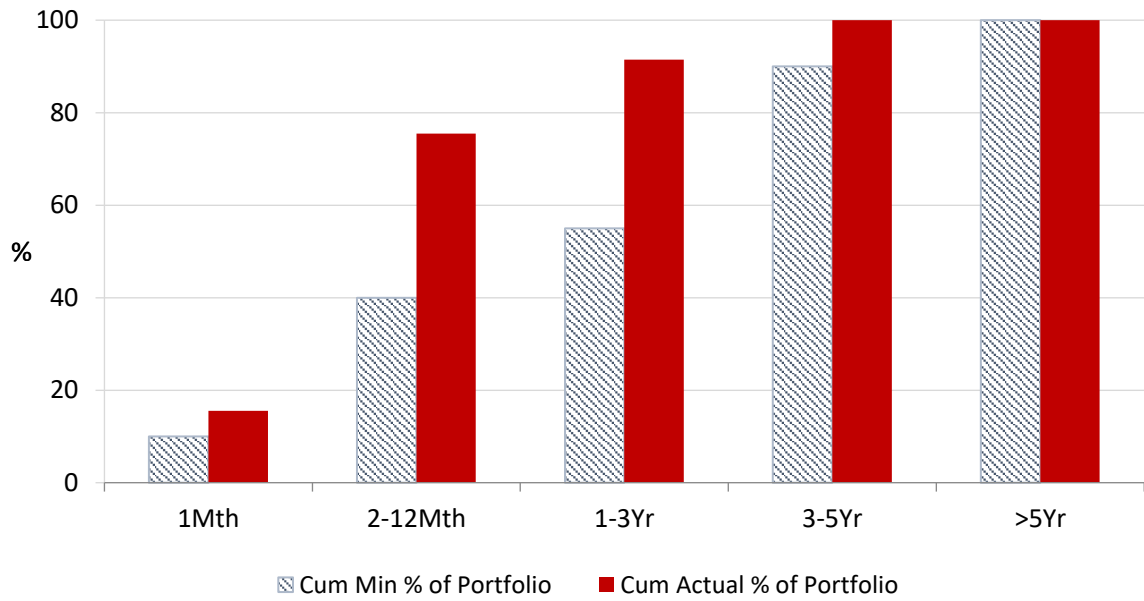
Actual Portfolio vs Strategic Enhanced Benchmark vs AusBond Benchmark vs 30 Day BBR Benchmark  
January 2022



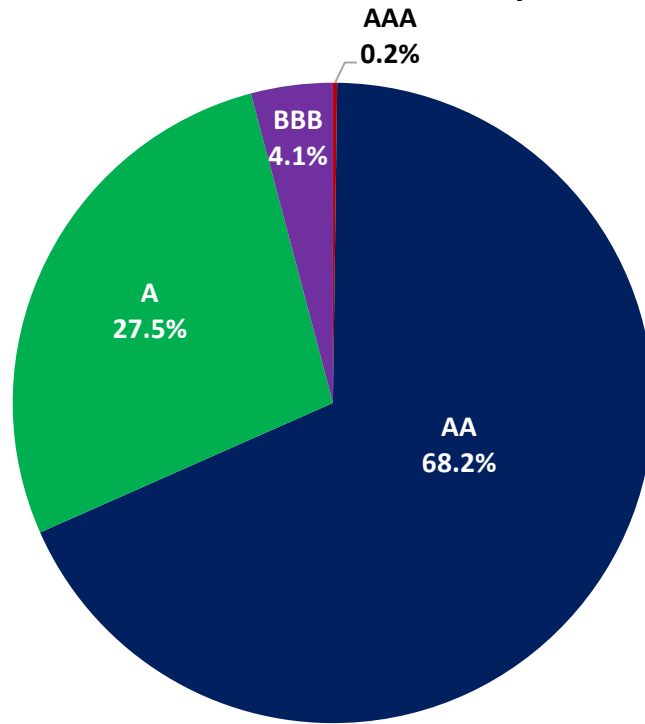
**Portfolio Liquidity - Maximum Allowances as at 31 January 2022**



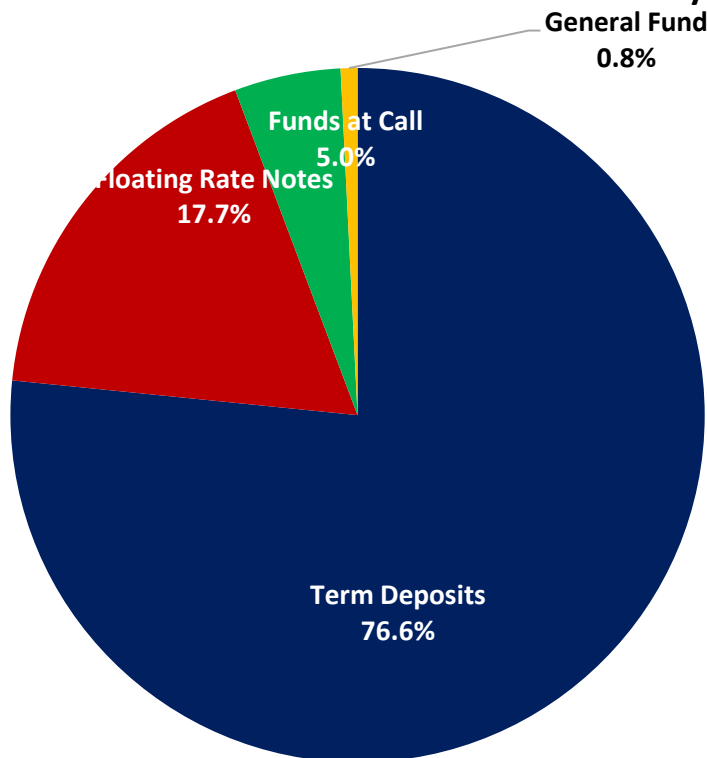
**Portfolio Liquidity - Minimum Allocations as at 31 January 2022**



### Risk Profile as at 31 January 2022



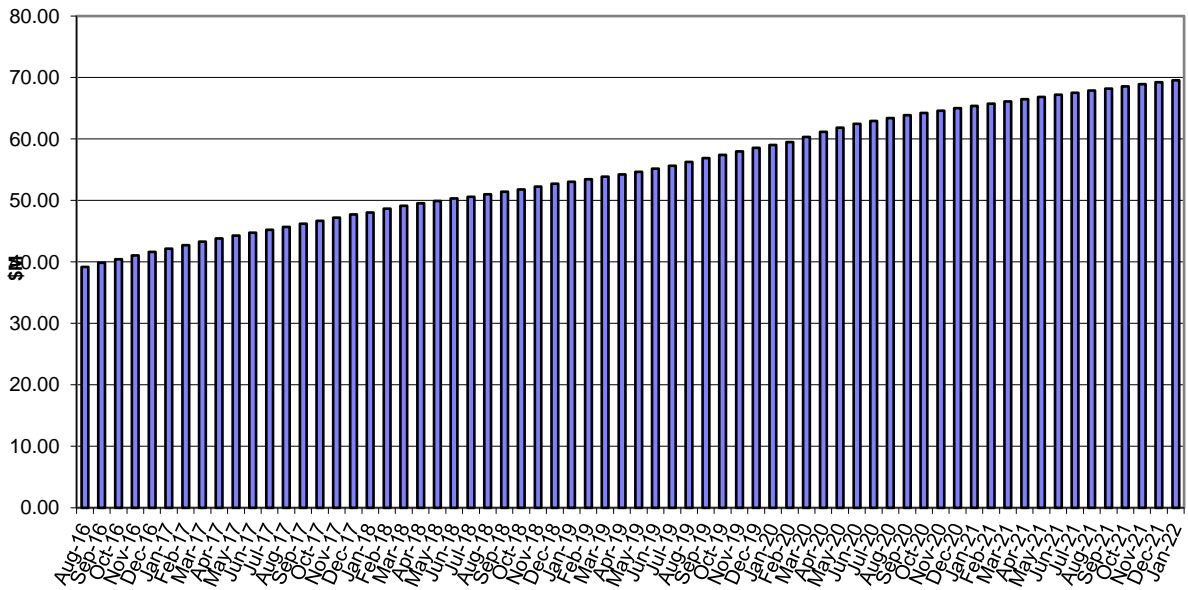
### Investment Product Profile as at 31 January 2022



**INVESTMENT AND CASH DISTRIBUTION BY FINANCIAL INSTITUTION**  
as at 31 January 2022

Institution Category	Financial Institution	Amount \$M	Financial Inst. %	Institution Cat. %
Australian Big 4 Bank (and related institutions)	ANZ Bank	18.0	2.5	
	Commonwealth Bank	172.0	24.2	
	National Aust Bank	65.7	9.3	
	Westpac Banking Corporation	218.5	30.8	
<b>Big 4 Total</b>		<b>474.1</b>		<b>66.8</b>
Other Australian ADIs and Australian subsidiaries of foreign institutions	Bank Australia Limited	5.0	0.7	
	Bank of Queensland	57.0	8.0	
	Bendigo & Adelaide Bank	70.0	9.9	
	Great Southern Bank (formerly Credit Union Australia)	4.3	0.6	
	IMB	15.0	2.1	
	ME Bank	16.0	2.3	
	Suncorp Bank	22.9	3.2	
	Macquarie Bank Ltd	31.0	4.4	
	Northern Territory Treasury Corporation	10.0	1.4	
Newcastle Permanent Building Society	5.0	0.7		
<b>Other ADI Total</b>		<b>236.1</b>		<b>33.2</b>
<b>Grand Total</b>		<b>710.2</b>	<b>100.0</b>	<b>100.0</b>

### Cumulative Outperformance over AusBond Benchmark - 2016-2022



### Cumulative Outperformance over 30 Day BBR Benchmark - 2016-2022

