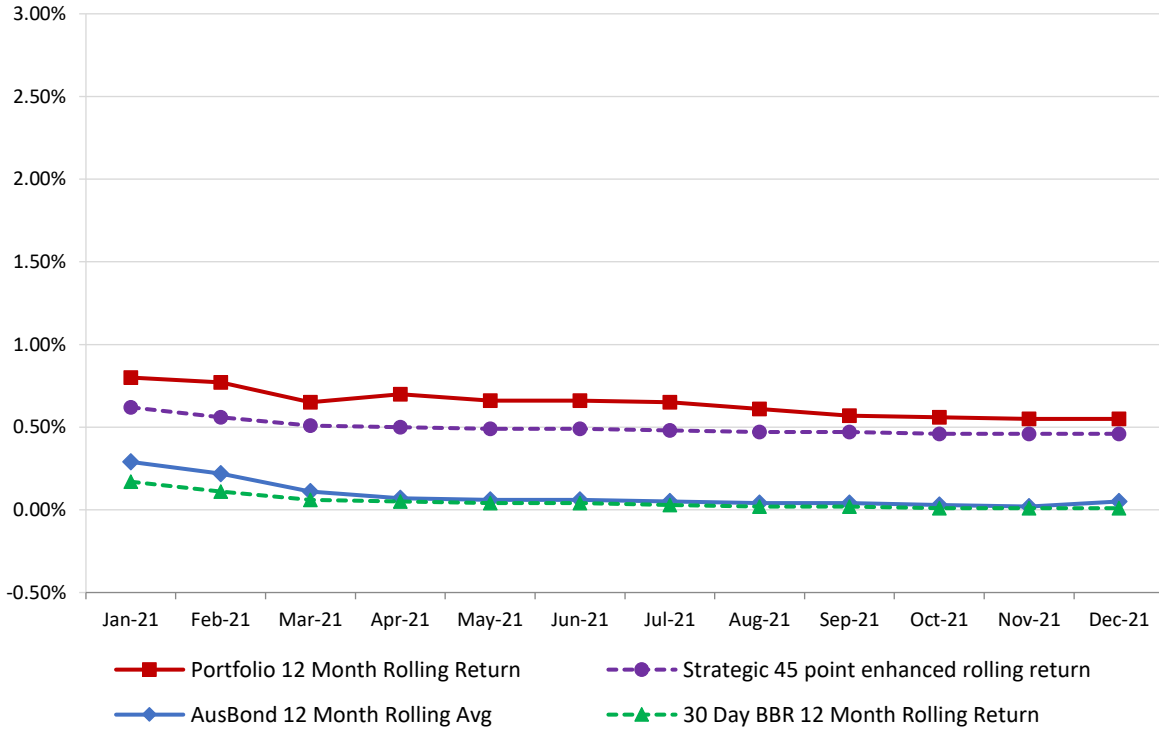


Attachment B

**Investment Performance as at
31 December 2021**

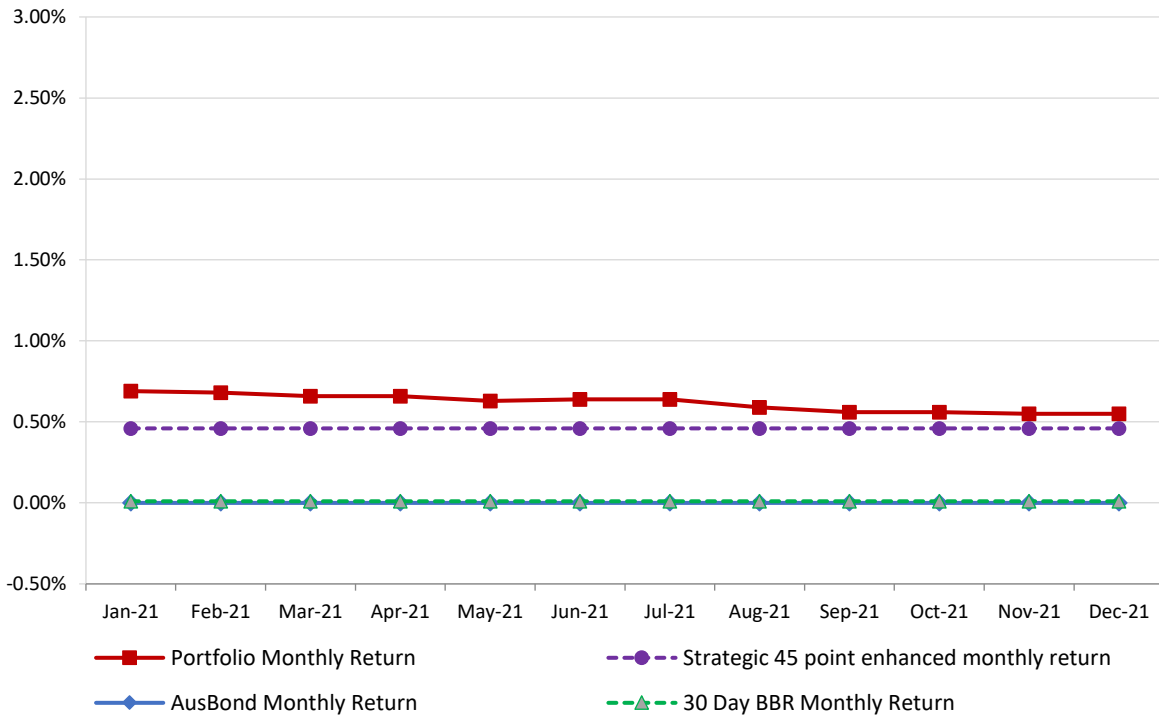
12 Month Rolling Averages

Actual Portfolio vs Strategic Enhanced Benchmark vs AusBond Benchmark vs 30 Day BBR Benchmark
December 2021

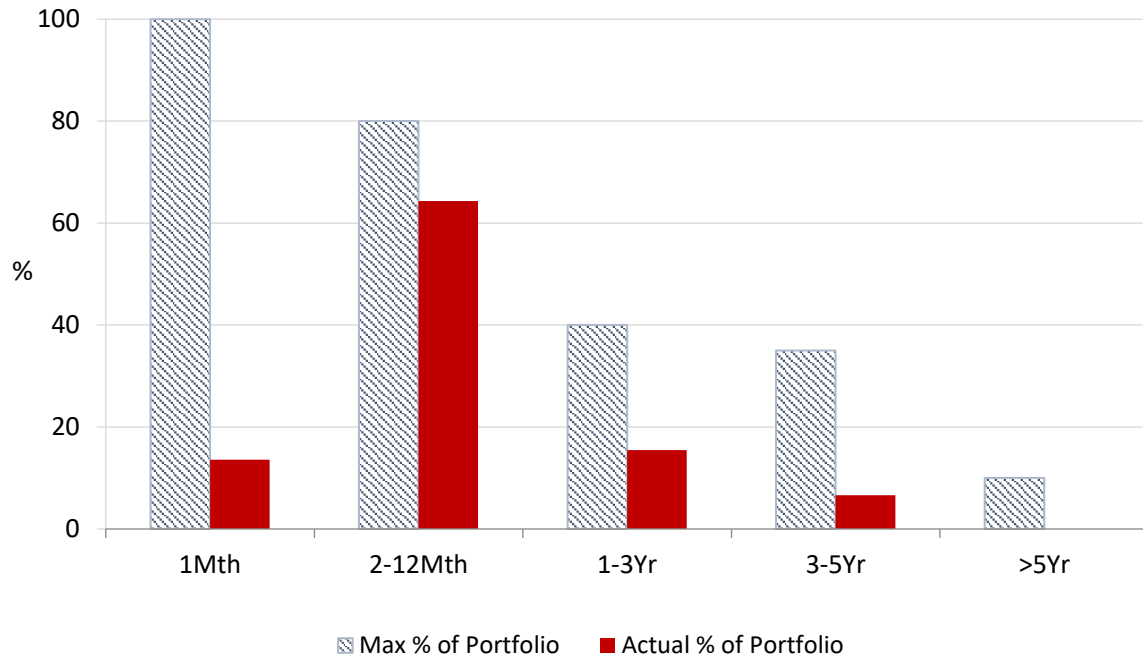


Monthly Results

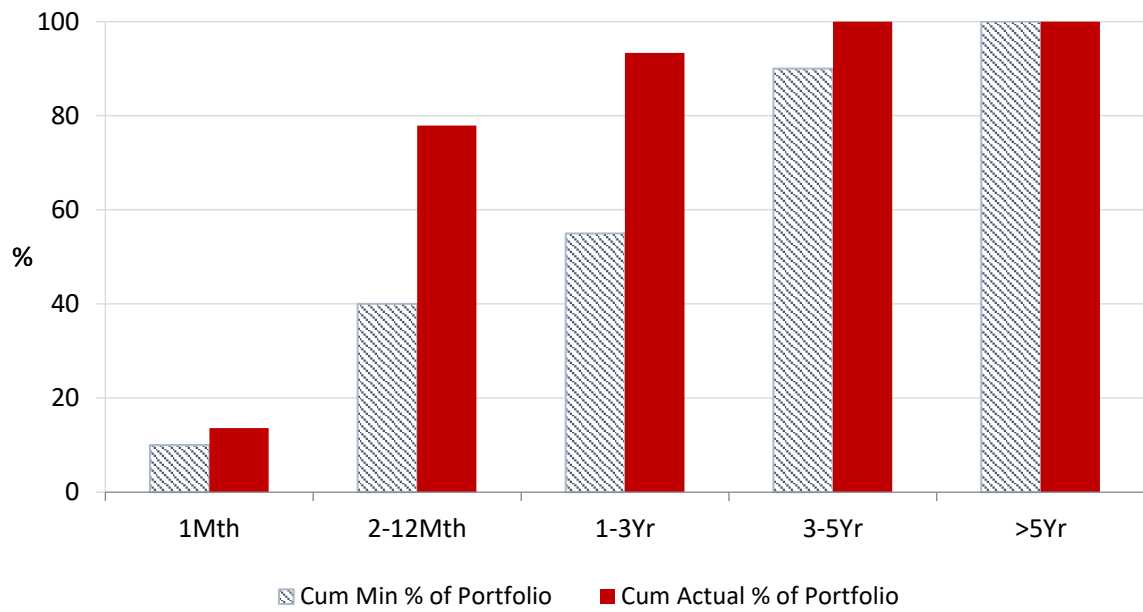
Actual Portfolio vs Strategic Enhanced Benchmark vs AusBond Benchmark vs 30 Day BBR Benchmark
December 2021



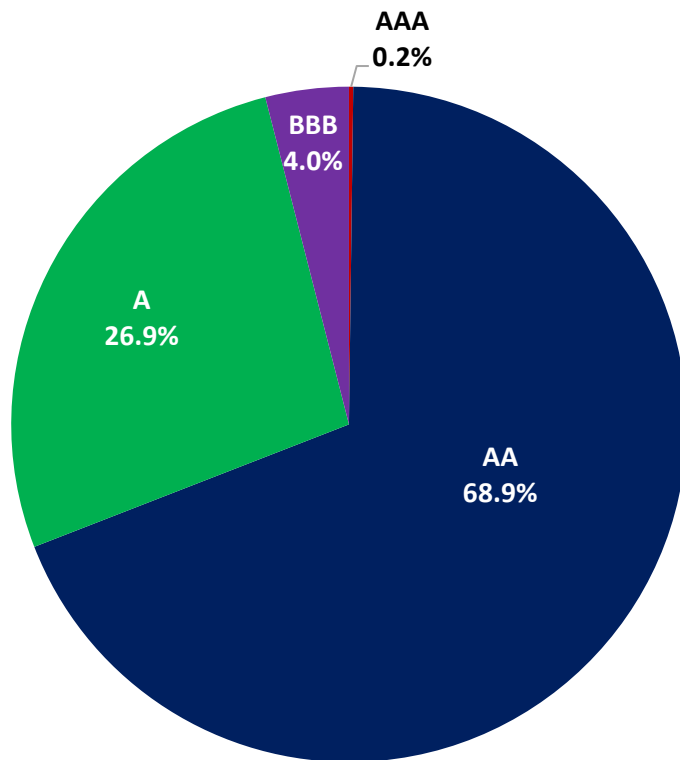
Portfolio Liquidity - Maximum Allowances as at 31 December 2021



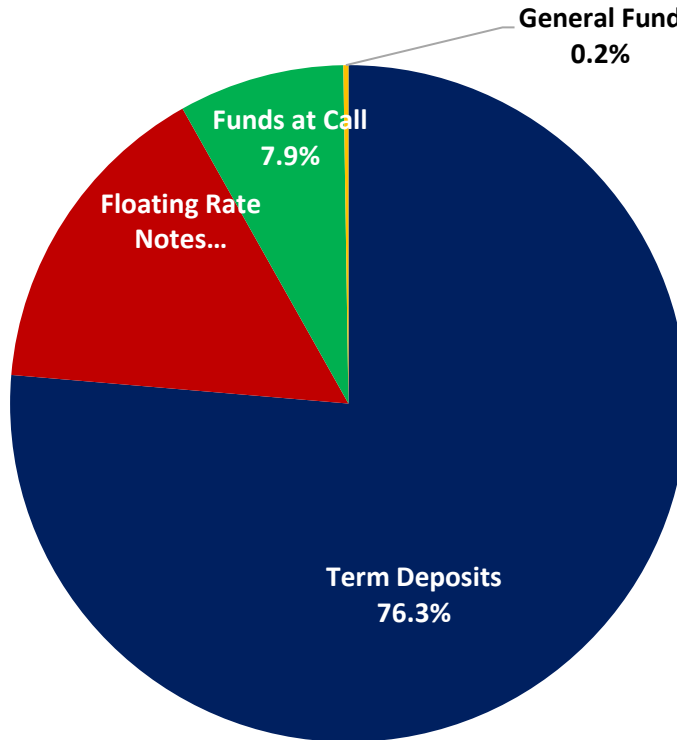
Portfolio Liquidity - Minimum Allocations as at 31 December 2021



Risk Profile as at 31 December 2021



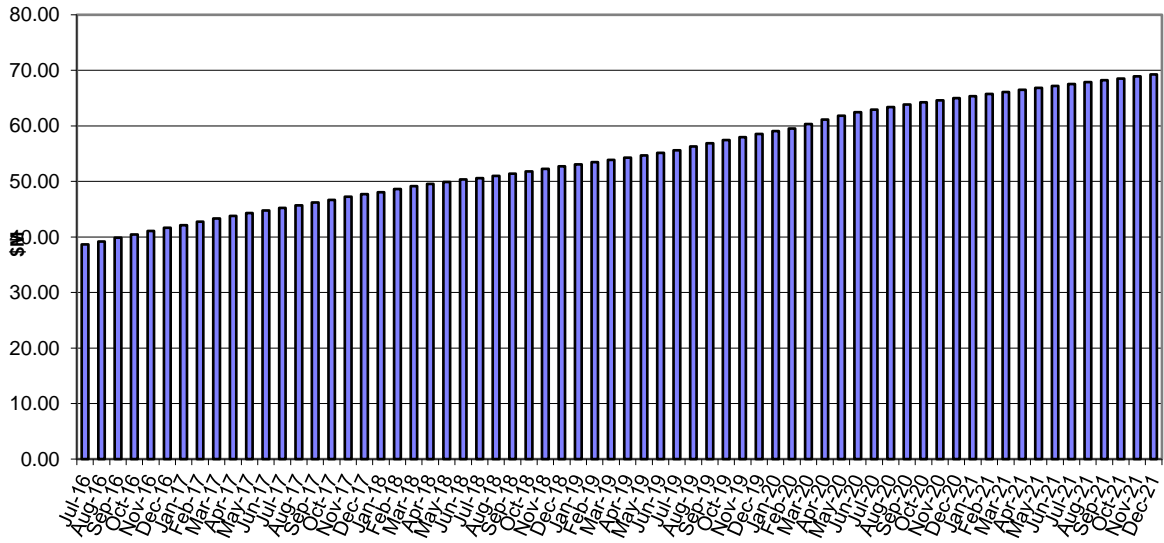
Investment Product Profile as at 31 December 2021



INVESTMENT AND CASH DISTRIBUTION BY FINANCIAL INSTITUTION
as at 31 December 2021

Institution Category	Financial Institution	Amount \$M	Financial Inst. %	Institution Cat. %
Australian Big 4 Bank (and related institutions)	ANZ Bank	18.0	2.4	
	Commonwealth Bank	206.7	28.1	
	National Aust Bank	70.7	9.6	
	Westpac Banking Corporation	200.8	27.3	
Big 4 Total		496.2		67.5
Other Australian ADIs and Australian subsidiaries of foreign institutions	Bank Australia Limited	5.0	0.7	
	Bank of Queensland	57.0	7.8	
	Bendigo & Adelaide Bank	65.0	8.8	
	Great Southern Bank (formerly Credit Union Australia)	4.3	0.6	
	IMB	15.0	2.0	
	ME Bank	16.0	2.2	
	Suncorp Bank	18.4	2.5	
	Macquarie Bank Ltd	43.0	5.8	
	Northern Territory Treasury Corporation	10.0	1.4	
Newcastle Permanent Building Society	5.0	0.7		
Other ADI Total		238.6		32.5
Grand Total		734.8	100.0	100.0

Cumulative Outperformance over AusBond Benchmark - 2016-2021



Cumulative Outperformance over 30 Day BBR Benchmark - 2016-2021

