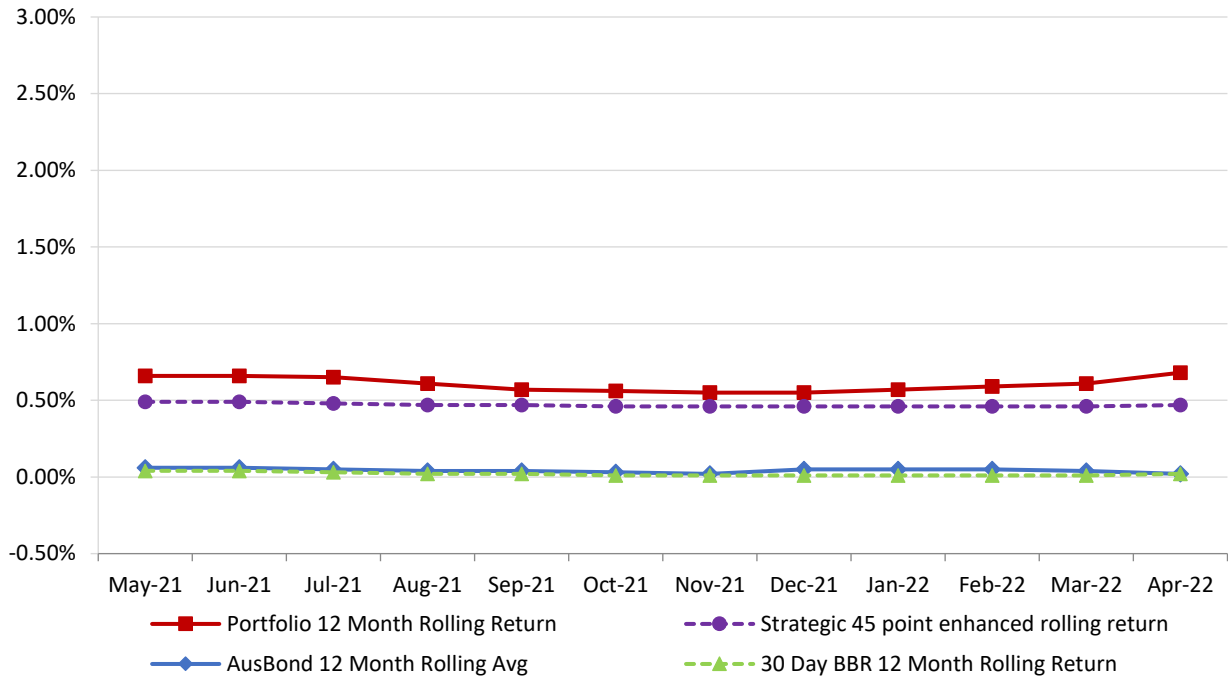


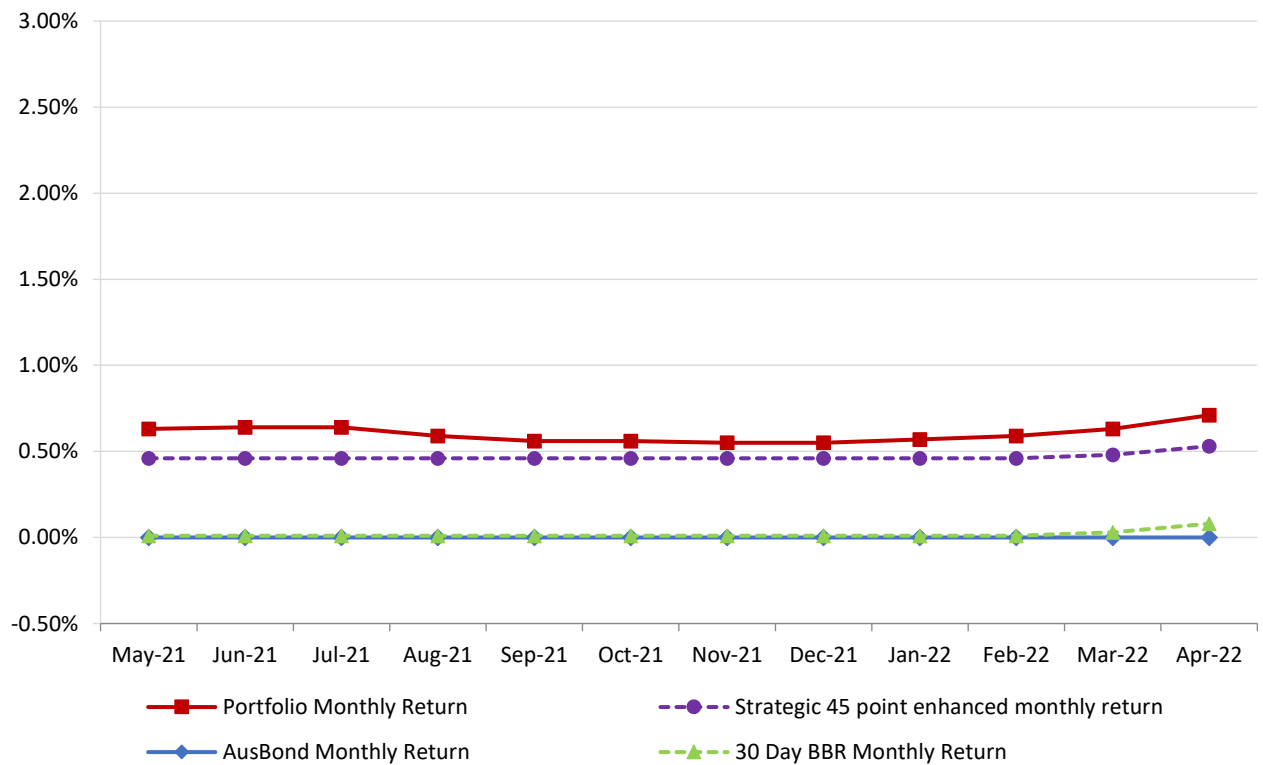
# **Attachment B**

**Investment Performance  
as at 30 April 2022**

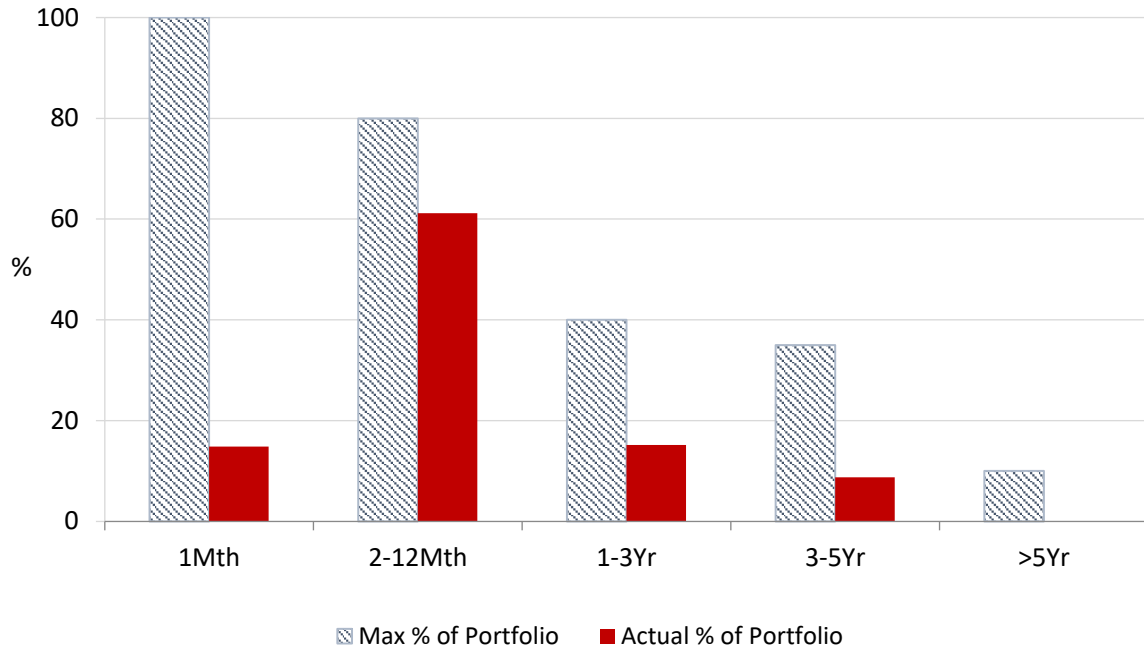
**12 Month Rolling Averages**  
**Actual Portfolio vs Strategic Enhanced Benchmark vs AusBond Benchmark vs 30 Day BBR Benchmark**  
**April 2022**



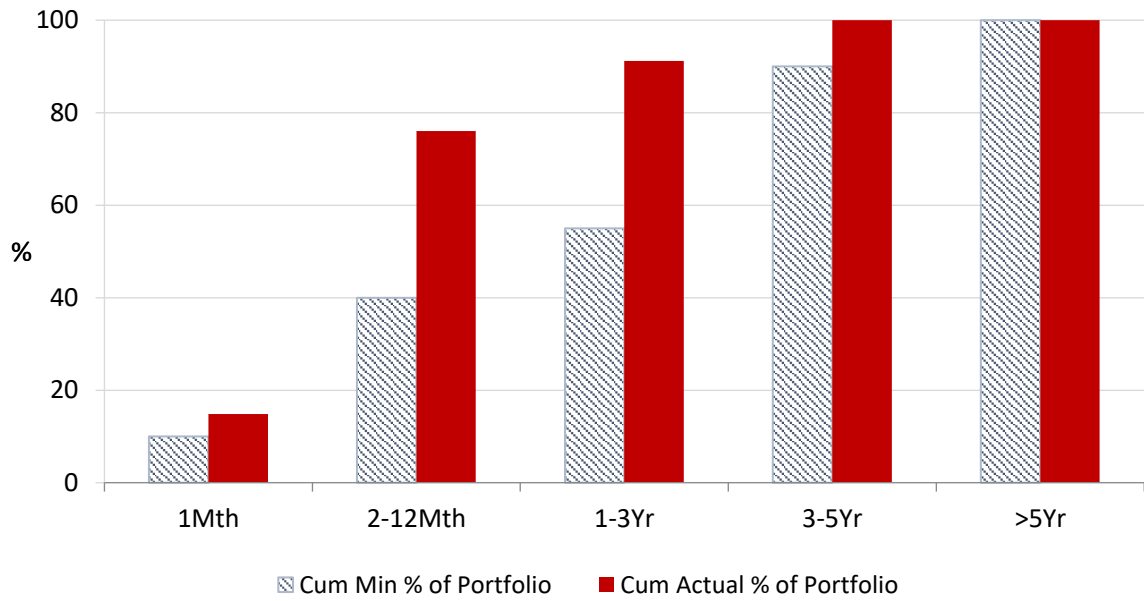
**Monthly Results**  
**Actual Portfolio vs Strategic Enhanced Benchmark vs AusBond Benchmark vs 30 Day BBR Benchmark**  
**April 2022**



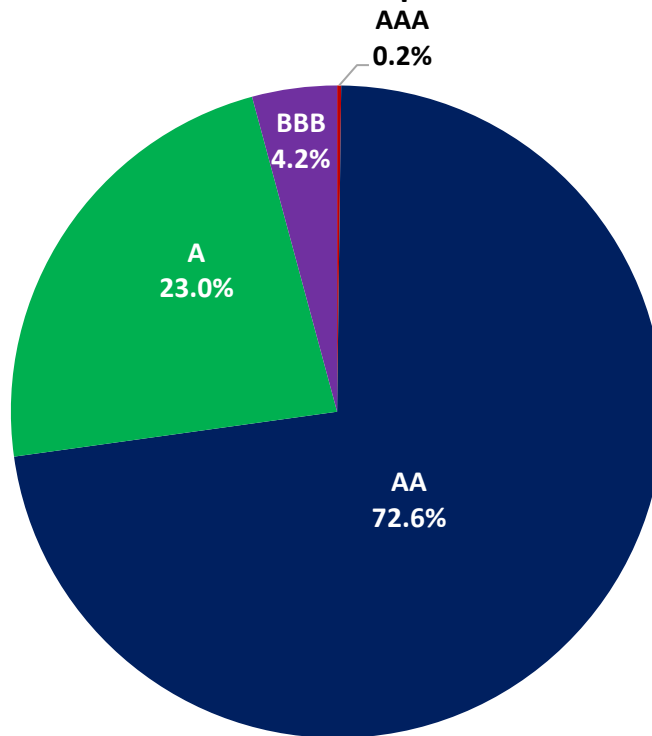
**Portfolio Liquidity - Maximum Allowances as at 30 April 2022**



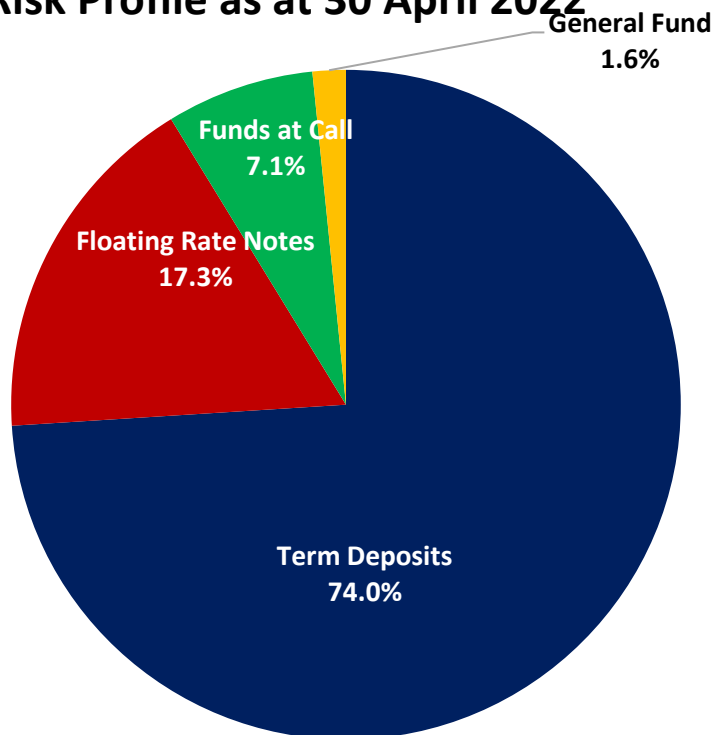
**Portfolio Liquidity - Minimum Allocations as at 30 April 2022**



### Risk Profile as at 30 April 2022



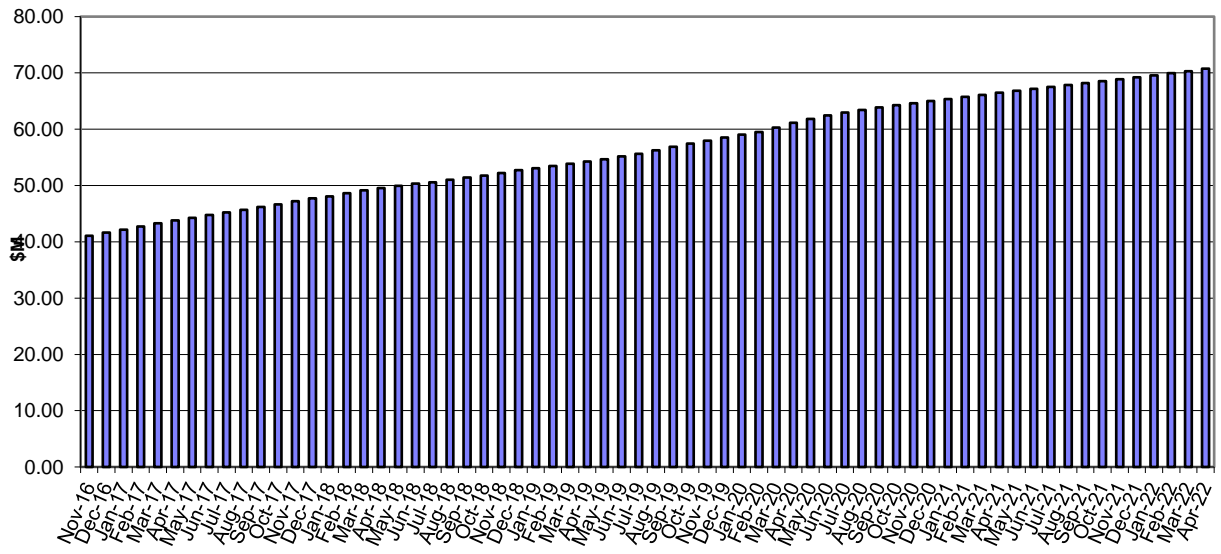
### Risk Profile as at 30 April 2022



**INVESTMENT AND CASH DISTRIBUTION BY FINANCIAL INSTITUTION**  
as at 30 April 2022

Institution Category	Financial Institution	Amount \$M	Financial Inst. %	Institution Cat. %
Australian Big 4 Bank (and related institutions)	ANZ Bank	49.0	7.0	
	Commonwealth Bank	142.0	20.2	
	National Aust Bank	74.7	10.6	
	Westpac Banking Corporation	229.2	32.6	
<b>Big 4 Total</b>		<b>494.9</b>		<b>70.4</b>
Other Australian ADIs and Australian subsidiaries of foreign institutions	Bank Australia Limited	5.0	0.7	
	Bank of Queensland	57.0	8.1	
	Bendigo & Adelaide Bank	50.0	7.1	
	Great Southern Bank (formerly Credit Union Australia)	2.8	0.4	
	IMB	10.0	1.4	
	ME Bank	11.0	1.6	
	Suncorp Bank	27.9	4.0	
	Macquarie Bank Ltd	27.0	3.8	
	Northern Territory Treasury Corporation	10.0	1.4	
	Newcastle Permanent Building Society	7.3	1.0	
<b>Other ADI Total</b>		<b>207.9</b>		<b>29.6</b>
<b>Grand Total</b>		<b>702.7</b>	<b>100.0</b>	<b>100.0</b>

### Cumulative Outperformance over AusBond Benchmark - 2016-2022



### Cumulative Outperformance over 30 Day BBR Benchmark - 2016-2022

