



Comments:

This plan has been designed by Ali Fayad of Sydney Traffic Control in accordance with Australian Standards outlined in the RMS's Traffic Control on Worksites Handbook which complies with AS1742.3 and Transport for NSW's "Traffic Control at Worksites" manual.

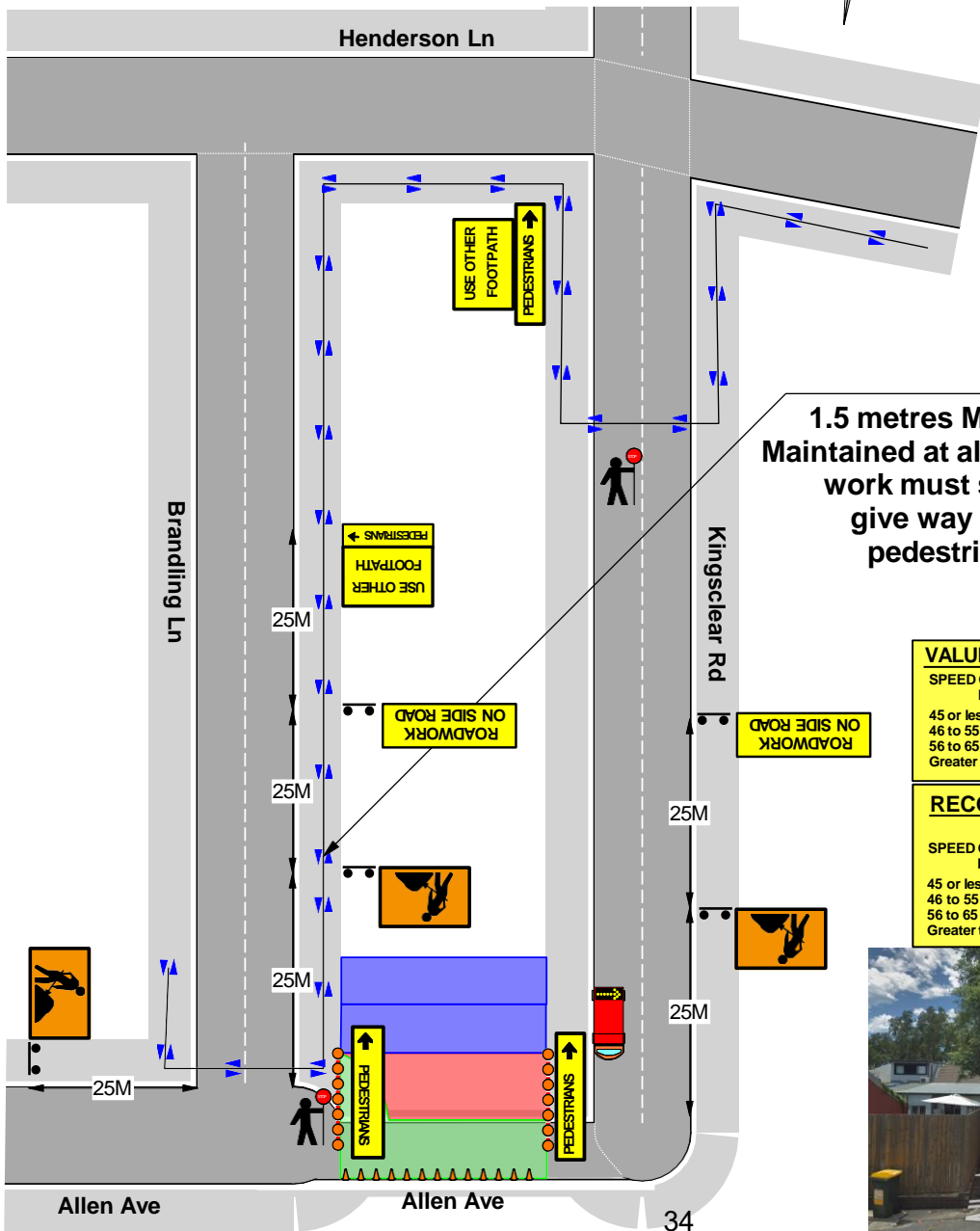
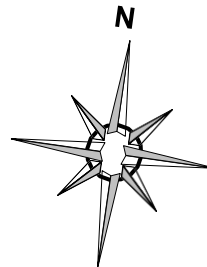
The plan is designed for the installation of a storm water pipe and the Digging of as trench across Allen Ave Alexandria into property 91 Kingsclear Rd Alexandria.

Certified traffic controllers will be on site to implement and monitor this TCP. If you have any questions please contact Ali Fayad on 80681844 or 0451 153 044.

**ALL SIGNS AND SPACING
 MUST BE IN ACCORDANCE
 WITH AUSTRALIAN
 STANDARD17423**

Legend

- Bollard
- Cone
- North Arrow
- Pedestrian route
- Pedestrian Tape
- Site Location
- Surrounding Property's
- T82R pedestrians (R)
- Traffic Control Vehicle
- Traffic Controller
- Work Area



**1.5 metres MUST be
 Maintained at all times and
 work must stop to
 give way to all
 pedestrians**

VALUE OF DIMENSION BETWEEN SIGNS	
SPEED OF TRAFFIC KMH	DIMENSION D M
45 or less	0 to 5
46 to 55	15
56 to 65	45
Greater than 65	Equal to speed of traffic, in km/h

RECOMMENDED TAPER LENGTH (m)	
SPEED OF TRAFFIC KMH	TRAFFIC CONTROL AT THE BEGINNING OF THE TAPER
45 or less	15
46 to 55	15
56 to 65	30
Greater than 65	N/A

