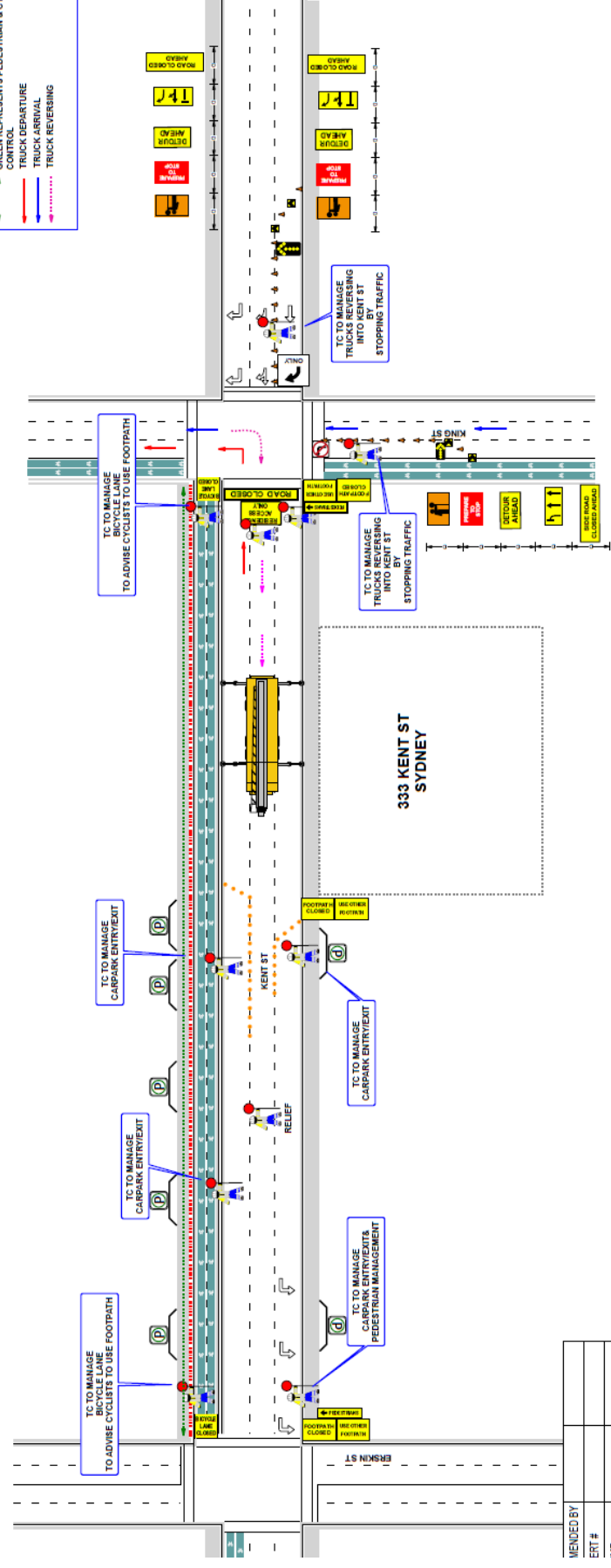


# TRAFFIC CONTROL PLAN

<b>Commercial</b>	<b>DATE:</b> 19/05/2022	<b>TRAFFIC CONTROL PLAN</b>
<b>LOCATION:</b> 333 KENT ST., SYDNEY	<b>NAME:</b> Alexander Macgregor	
<b>DESIGNER:</b> Alexander Macgregor	<b>DATE:</b> 19/05/2022	
<b>TOP No. 01:</b> FULL ROAD CLOSURE		



DESIGNED BY	
ERT #	
IME	
ATE	

**TABLE 4.2**

**VALUE OF DIMENSION D**

Speed of traffic km/h	Dimension D m
45 or less	0 to 5
46 to 55	1.5
56 to 65	4.5

*Extraction from AS 1742-2011, Table 4.2, All other provisions.*

**Commercial**

**DATE:** 19/05/2022 **Author:** Alexander Macgregor **Project:** 333 KENT STREET, SYDNEY

**Client:** Alexander Macgregor

**Project No.:** 19052022

**Full Road Closure**

**THIS DOCUMENT IS THE PROPERTY OF COMMERCIAL TC. IT IS TO BE USED ONLY FOR THE PROJECT AND LOCATION SPECIFICALLY IDENTIFIED IN THE TITLE. COMMERCIAL TC BEARS NO LIABILITY FOR THE SET UP AND ACCURACY OF THIS TOP.**

**Revised/Amended Traffic Control Plans:** Contractors will adhere to this TOP according to TSM Manual V5 and relevant DWG's.

**Signage and Devices:** are to be placed in accordance with the TOP. Modifications may be made by person holding a valid 'Design and Audit' Qualification only.

**Insurance:** Commercial TC Pty Ltd. This drawing shall only be used for the purpose for which it is intended.

**Commercial TC Pty Ltd** • ABN 55 616 358 626 • t: 02 8732 8444 • f: 02 8732 8448 • [amo@commercialtc.com.au](mailto:amo@commercialtc.com.au)

Suite 4, Level 9, 1 Rider Boulevard RHODES NSW 2138 • PO Box 3637 RHODES SC NSW 2138

**TC PTY LTD**

**DETOUR MAP**

